

# **ILLUSTRATED PARTS LIST**

**MFG. ID NO. 96011027500**

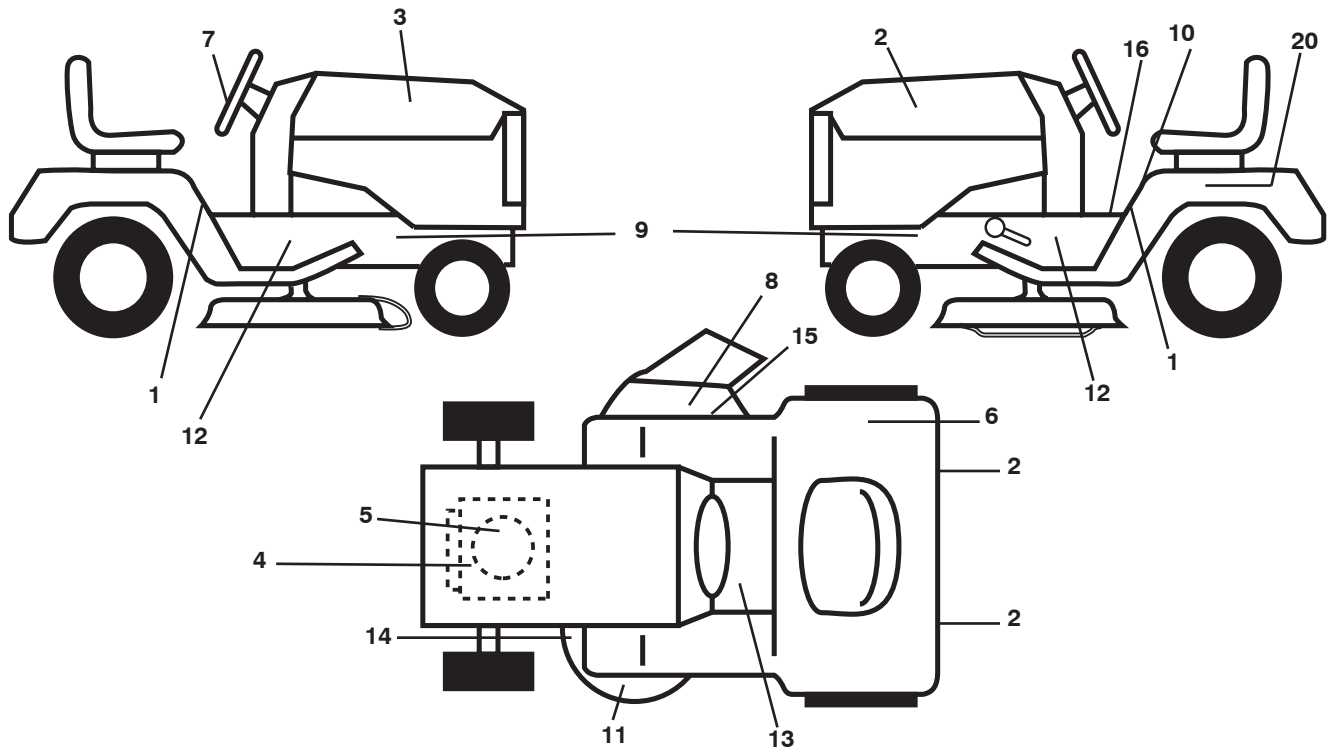
**CUSTOMER CATALOG NO. UN1842SBHK**

**PRODUCT NO. 960 11 02-75**



# REPAIR PARTS

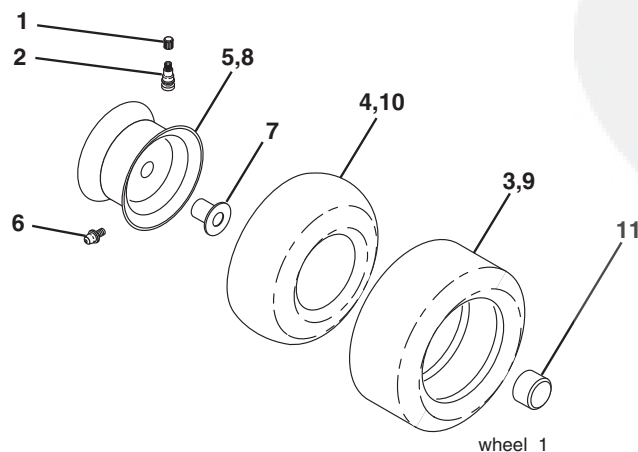
TRACTOR - MODEL NO. UN1842SBHK (96011027500), PRODUCT NO. 960 11 02-75  
DECALS



KEY NO.	PART NO.	DESCRIPTION
1	532 41 73-22	Decal, Fender
2	532 41 73-24	Decal, Hood LH
3	532 41 73-23	Decal, Hood RH
4	532 19 68-41	Decal, Warning Eng Syms.
5	532 41 67-41	Decal, HP Engine
6	532 18 04-32	Decal, Europe Stand 100 DB/CE
7	532 18 96-11	Decal, Ins. Strg Whl.
8	532 18 21-66	Decal, Mower Cut finger
9	532 15 97-36	Decal, Chassis Hot Muffler
10	532 40 03-89	Decal, Warning Syms CE
12	532 19 68-42	Decal, Warning Cutfinger

KEY NO.	PART NO.	DESCRIPTION
13	532 15 97-37	Decal, Brake/Clutch Symbol LT
14	532 16 03-96	Decal, V-Belt Schematic
15	532 19 63-57	Decal, Defect Warning Cutfinger Symbol
16	532 14 08-37	Decal, Saddle Brake Parking
20	532 14 50-05	Decal, Bat Dan/Psn
--	532 16 69-60	Decal, Bypass
--	532 13 83-11	Decal, Handle Lift Height Adjust
--	532 16 25-98	Decal, Drawbar Load Limit
--	532 40 08-95	Manual Operator's (Euro.)

## WHEELS & TIRES

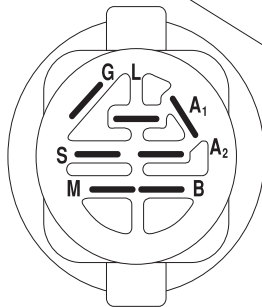
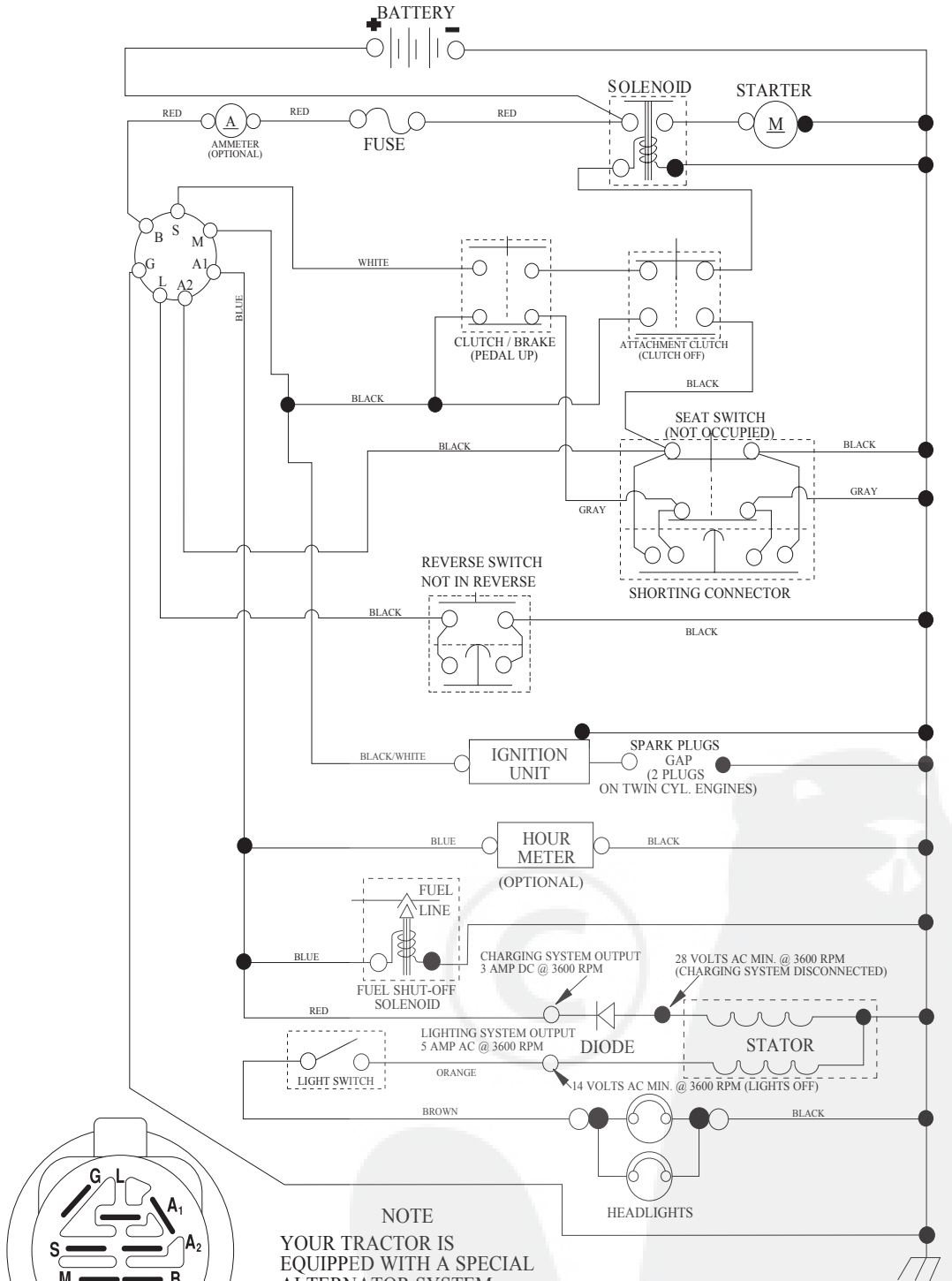


KEY NO.	PART NO.	DESCRIPTION
1	532 05 91-92	Cap Valve Tire
2	532 06 51-39	Stem Valve
3	532 10 62-22	Tire F Ts 15 x 6 0 - 6 Service
4	532 05 99-04	Tube Front (Service Item Only)
5	532 18 33-37	Rim Asm 6"Front Service
6	532 12 49-57	Fitting Grease (Front Wheel Only)
7	532 12 49-59	Bearing Flange (Front Wheel Only)
8	532 18 33-38	Rim Asm 8"Rear Service
9	532 12 46-35	Tire R Ts 18 x 8 5-8 C Service
10	532 12 49-26	Tube Rear (Service Item Only)
11	532 17 50-39	Cap Axle Blk 1 50 x 1 00
--	532 14 43-34	Sealant, Tire ( 10 oz. Tube)

**NOTE:** All component dimensions given in U.S. inches  
1 inch = 25.4 mm

# TRACTOR - MODEL NO. UN1842SBHK (96011027500), PRODUCT NO. 960 11 02-75 SCHEMATIC

SCH03



IGNITION SWITCH

POSITION	CIRCUIT "MAKE"
OFF	M+G+A1
RUN/OVERRIDE	B+A1
RUN	B+A1 L+A2
START	B + S + A1

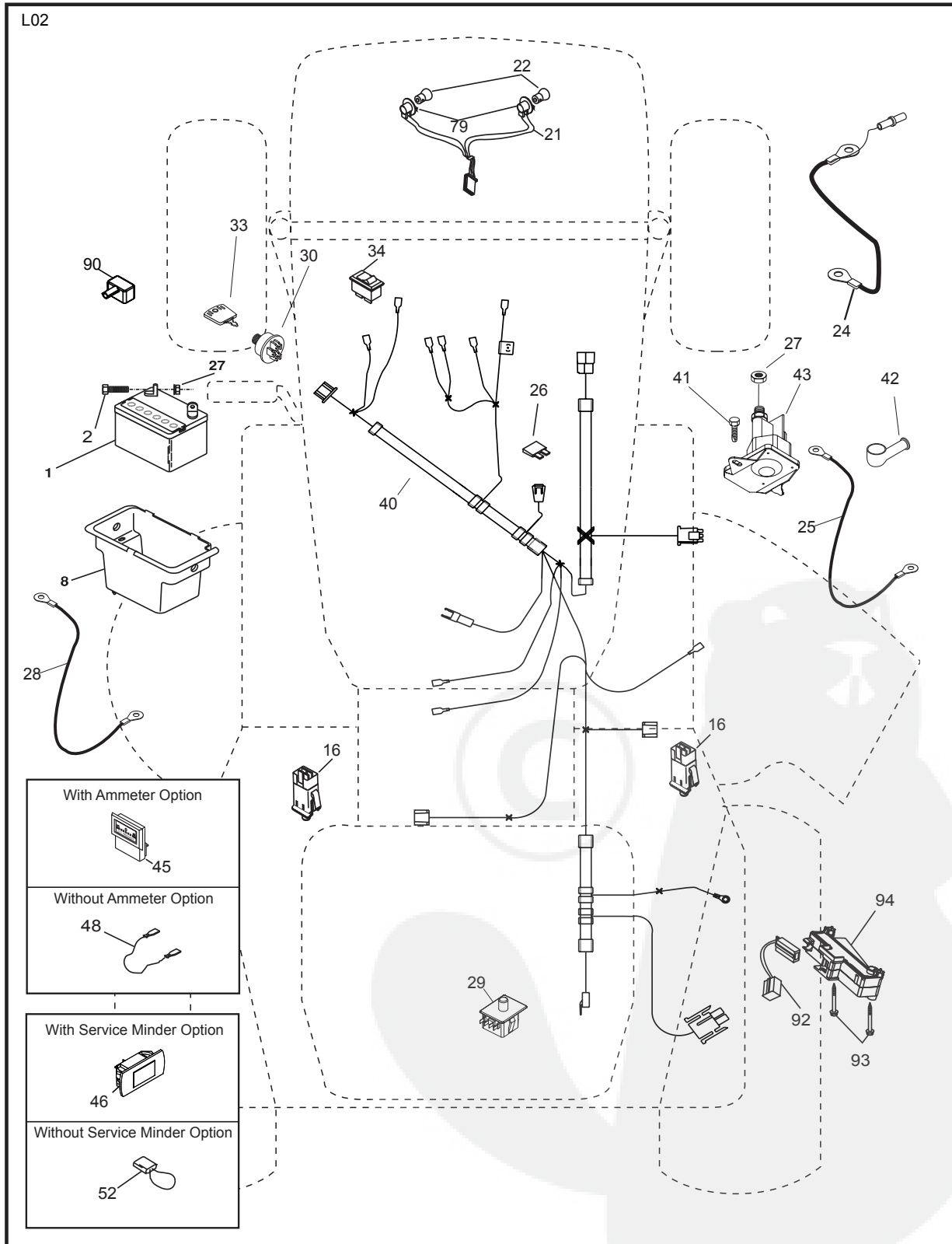
**NOTE**  
YOUR TRACTOR IS EQUIPPED WITH A SPECIAL ALTERNATOR SYSTEM. THE LIGHTS ARE NOT CONNECTED TO THE BATTERY, BUT HAVE THEIR OWN ELECTRICAL SOURCE. BECAUSE OF THIS, THE BRIGHTNESS OF THE LIGHTS WILL CHANGE WITH ENGINE SPEED. AT IDLE THE LIGHTS WILL DIM. AS THE ENGINE IS SPEEDED UP, THE LIGHTS WILL BECOME THEIR BRIGHTEST.



**WIRING INSULATED CLIPS**  
NOTE: IF WIRING INSULATED CLIPS WERE REMOVED FOR SERVICING OF UNIT, THEY SHOULD BE RE-INSTALLED TO PROPERLY SECURE YOUR WIRING.

# REPAIR PARTS

TRACTOR - MODEL NO. UN1842SBHK (96011027500), PRODUCT NO. 960 11 02-75  
ELECTRICAL



# REPAIR PARTS

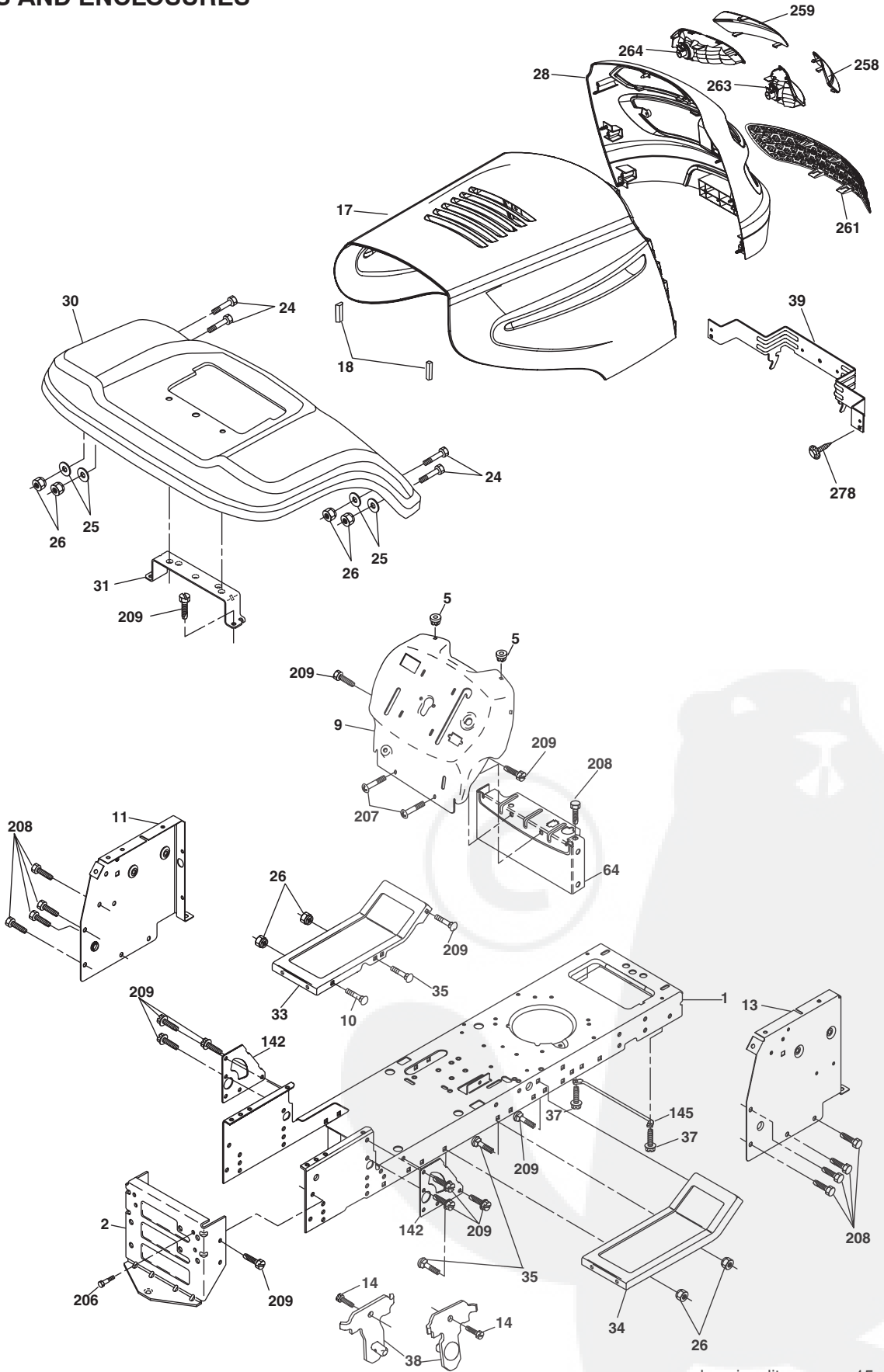
TRACTOR - MODEL NO. UN1842SBHK (96011027500), PRODUCT NO. 960 11 02-75  
ELECTRICAL

KEY NO.	PART NO.	DESCRIPTION
1	532 16 34-65	Battery 12 Volt 28 AMP
2	874 76 04-12	Bolt Hex Hd 1/4-20 unc x 3/4
8	532 17 66-89	Box Battery Fender
16	532 17 61-38	Switch Interlock Push-In
21	532 18 37-59	Harness Asm Light W/4152j
22	532 00 41-52	Bulb Light #1156
24	532 12 47-80	Cable Battery 6 Ga. 11" red
25	532 14 61-47	Cable Battery 6 Ga. 44" red w/16 wire
26	532 17 51-58	Fuse 20 AMP
27	873 51 04-00	Nut Keps Hex 1/4-20 unc
28	532 12 47-73	Cable Ground 6 Ga. 12" black
29	532 19 27-49	Switch Seat
30	532 19 33-50	Switch Ign
33	532 41 19-35	Key/Chain
34	532 11 07-12	Switch Light/Reset B/B/Red
40	532 19 74-28	Harness Ign.
41	871 11 04-08	Bolt Blk Fin Hex 1/4 - 20 x 1/2
42	532 13 15-63	Cover Terminal Red
43	532 19 25-07	Solenoid
48	532 14 08-44	Adapter Ammeter
52	532 14 19-40	Protection Wire Loop
79	532 17 52-42	Socket Asm Bulb
90	532 18 04-49	Cover Terminal Battery
92	532 19 66-15	Harness Pigtail Consle ROS
93	532 19 25-40	Screw Plastite 10-14 x 2.0
94	532 19 18-34	Module Reverse ROS

**NOTE:** All component dimensions given in U.S. inches.  
1 inch = 25.4 mm.

# REPAIR PARTS

TRACTOR - MODEL NO. UN1842SBHK (96011027500), PRODUCT NO. 960 11 02-75  
CHASSIS AND ENCLOSURES



# REPAIR PARTS

TRACTOR - MODEL NO. UN1842SBHK (96011027500), PRODUCT NO. 960 11 02-75  
CHASSIS AND ENCLOSURES

KEY NO.	PART NO.	DESCRIPTION
1	532 17 46-19	Chassis
2	532 17 65-54	Drawbar
5	532 15 52-72	Bumper, Hood/Dash
9	532 19 48-22	Dash
10	872 14 06-08	Bolt 3/8-16 x 1
11	532 17 49-96	Panel Dash LH
13	532 18 69-52	Panel Slkscr. Dash RH
14	817 49 06-08	Screw 3/8-16 x 1/2
17	532 18 67-07	Hood
18	532 18 49-21	Bumper Hood
24	874 78 06-16	Bolt Fin. Hex 3/8-16 unc x 1 Gr. 5
25	819 13 13-12	Washer 13/32 x 13/16 x 12 Ga.
26	873 80 06-00	Nut Lock Hex w/Ins. 3/8-16 unc
28	532 40 16-05	Grille Asm. ( Inc. 258, 259, 261, 263, 264)
30	532 19 57-70	Fender
31	532 13 66-19	Bracket Fender Repl. 109873x
33	532 18 11-93	Footrest Pnt. LH
34	532 18 11-94	Footrest Pnt. RH
35	872 11 06-06	Bolt Rdhd. Sht. Sqnk. 3/8-16 x 3/4
37	817 49 05-08	Screw Thdrol. 5/16-18 x 1/2 TYT
38	532 17 57-10	Bracket Asm. Pivot Mower Rear
39	532 40 78-07	Bracket Pivot
64	532 15 47-98	Dash Lower
142	532 17 57-02	Plate Reinforcement
145	532 40 91-67	Rod Pivot Chassis/Hood
206	532 17 01-65	Bolt Shoulder 5/16-18
207	817 67 05-08	Screw 5/16-18 x 1/2
208	817 67 06-08	Screw Thdrol. 3/8-16 x 1/2
209	817 00 06-12	Screw Hex Wsh. Thdrol. 3/8-16
258	532 18 97-55	Lens Grille RH
259	532 18 97-54	Lens, Grille LH
261	532 18 97-53	Insert Grille
263	532 18 38-33	Bezel Grille RH
264	532 18 38-32	Bezel Grille LH
278	532 41 63-58	Screw 10 x .750 BOS Thread
--	532 00 54-79	Plug Button Blk. 359 Dia. Choke

**NOTE:** All component dimensions given in U.S. inches  
1 inch = 25.4 mm





# REPAIR PARTS

TRACTOR - MODEL NO. UN1842SBHK (96011027500), PRODUCT NO. 960 11 02-75  
DRIVE

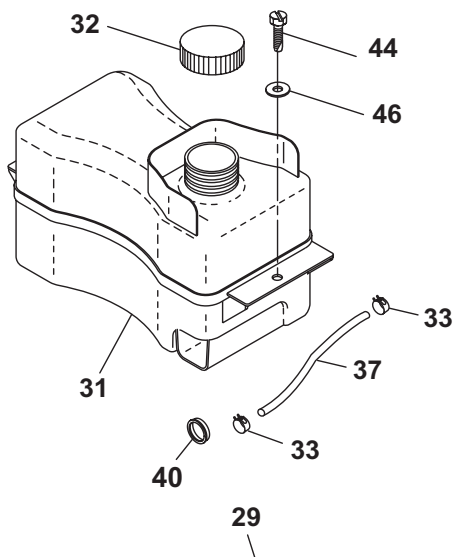
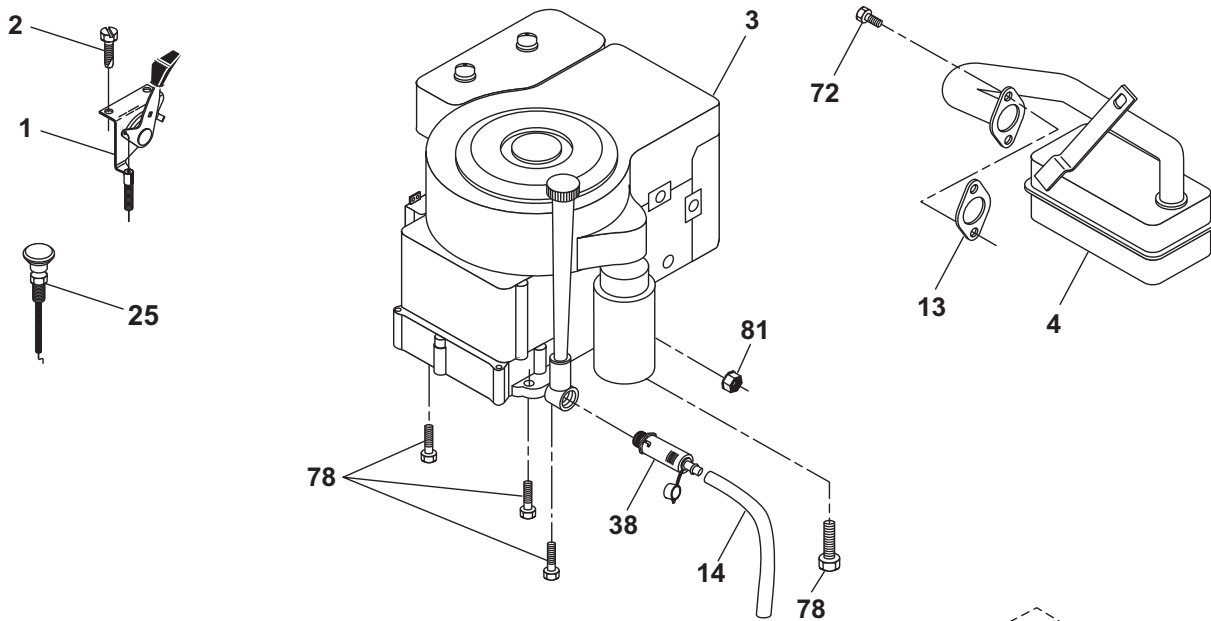
KEY NO.	PART NO.	DESCRIPTION	KEY NO.	PART NO.	DESCRIPTION
1	-----	Transaxle Hydro-Gear 322-0510 (Order parts from transaxle manufacturer)	70	532 18 02-18	Guide Belt Mower Drive RH
8	532 19 27-06	Rod Shift Fender Adjust Lt	71	532 16 91-83	Strap Torque LH
10	876 02 04-16	Pin Cotter 1/8 x 1 Cad	73	532 16 91-82	Strap Torque RH
14	810 04 04-00	Washer Lock Hvy Helical	74	532 13 70-57	Spacer Axle
15	874 49 05-44	Bolt Hex 5/16-18 Gr. 5	75	532 12 17-49	Washer 25/32 x 1 1/4 x 16 Ga.
16	873 80 05-00	Nut Lock Hex w/Ins 5/16-18	76	812 00 00-01	E-ring #5133-75
19	873 80 06-00	Nut Lock 3/8-16 unc	77	532 12 35-83	Key Square 2 0 x 1845/ 1865
21	532 10 69-33	Knob	78	532 12 17-48	Washer 25/32 x 1-5/8 x 16 Ga.
22	532 16 94-98	Rod Brake	81	532 16 55-96	Shaft Asm Cross
24	873 35 06-00	Nut Hex Jam 3/8-16 unc	82	532 16 57-11	Spring Torsion T/a
25	532 10 68-88	Spring Rod Brake 2 00 Zinc	83	819 17 12-16	Washer 17/32 x 3/4 x 16 Ga.
26	819 13 13-16	Washer 13/32 x 13/16 x 16 Ga.	84	532 16 98-43	Link Transaxle
27	876 02 04-12	Pin Cotter 1/8 x 3/4 Cad	89	532 19 49-72	Console Shift STLT
28	532 17 57-65	Rod Brake Parking LT/YT	95	532 17 02-01	Control Asm Bypass
29	532 07 16-73	Cap Brake Parking Black	96	532 12 47-88	Retainer Spring 1"
30	532 17 49-73	Bracket Mtg Transaxle	103	873 94 08-00	Nut Jam Toplock 1/2-20 UNF
32	874 76 05-12	Bolt Hex Hd 5/16-18 unc x 3/4	112	819 09 12-10	Washer 9/32 x 3/4 x 10 Ga.
34	532 17 55-78	Shaft Asm Pedal Foot	116	872 14 06-08	Bolt Rdhd Sq Neck 3/8-16 x 1.0
35	532 12 01-83	Bearing Nylon Blk 629 Id	120	873 90 06-00	Nut Lock Flg. 3/8-16 unc
36	819 21 16-16	Washer 21/32 x 1 x 16 Ga.	150	532 17 54-56	Spacer
37	532 12 49-63	Pin Roll 3/16 x 1"	151	819 13 32-10	Washer 13/32 x 2 x 10 Ga.
38	532 17 91-14	Pulley Idler Composite	156	532 16 60-02	Washer Srrted 5/16 ID x 1.125
39	872 11 06-22	Bolt Fin Hex 3/8-16 unc x2-3/4 Gr. 5	158	532 16 55-89	Bracket Shift Mount
41	532 17 55-56	Keeper Belt Idler Flat	159	532 18 39-00	Hub Shift
47	532 12 77-83	Pulley Idler V Groove Plastic	161	872 14 04-06	Bolt Rdhd Sqnk 1/4-20 x 3/4 Gr. 5
48	532 15 44-07	Bellcrank Clutch Grnd Div	162	873 68 04-00	Nut Crownlock 1/4-20 unc
49	532 12 32-05	Retainer Belt Style Spring	163	874 78 04-16	Bolt Hex Fin 1/4-20 unc x 1 Gr. 5
50	872 11 06-12	Bolt 3/8-16 x 1-1/2 Gr. 5	165	532 16 56-23	Bracket Pivot Lever
51	873 68 06-00	Nut Crownlock 3/8-16 unc	166	817 49 05-10	Screw 5/16-18 x 5/8
52	873 68 05-00	Nut Crownlock 5/16-18 unc	168	532 16 54-92	Bolt Shoulder 5/16-18 x .561
53	532 19 96-52	Link Clutch	169	532 16 55-81	Plate Fastening Lt
55	532 10 57-09	Spring Return Clutch 6 75	197	532 16 96-13	Nyliner Snap-In
56	817 06 06-20	Screw 3/8-16 x 3/4	199	532 16 96-12	Bolt, shoulder 5/16-18 unc
57	532 14 02-94	V-Belt Ground Drive	200	872 14 05-08	Bolt 5/16-18 unc x 1
59	532 16 96-91	Keeper Belt Span Ctr	202	872 11 06-14	Bolt Carr. SH 3/8-16 x 1-3/4 Gr. 5
61	817 12 06-14	Screw 3/8-16 x .875	205	819 17 16-16	Washer 17/32 x 1 x 16 Ga.
62	532 12 48-72	Cover Pedal Round	207	532 16 95-93	Washer Nyl
63	532 18 02-19	Engine Pulley	212	532 14 52-12	Nut, Hex Flange Lock
64	532 17 39-37	Bolt Hex	263	817 00 06-12	Screw 3/8-16 x 3/4
65	810 04 07-00	Washer Lock Hvy Hlcl Spr 7/16	268	532 18 24-02	Guard Muffler
66	532 15 47-78	Keeper Belt Engine Foolproof	275	819 13 16-14	Washer 13/32 x 1 x 14 Ga.
69	532 14 24-32	Screw Hex 1/4-1/2 unc			

**NOTE:** All component dimensions given in U.S. inches  
1 inch = 25.4 mm

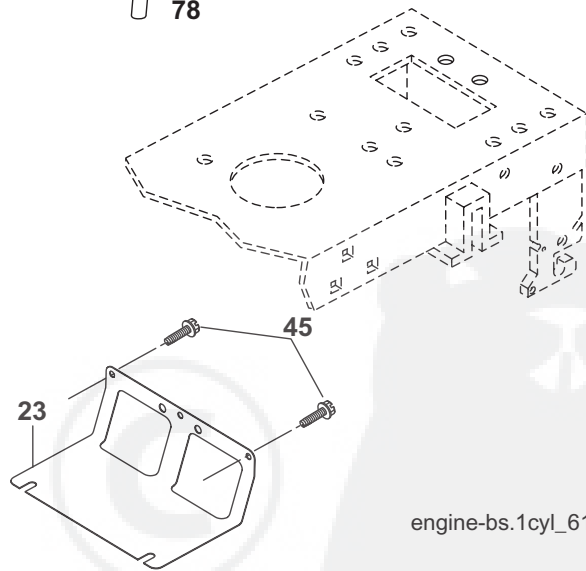
# REPAIR PARTS

TRACTOR - MODEL NO. UN1842SBHK (96011027500), PRODUCT NO. 960 11 02-75

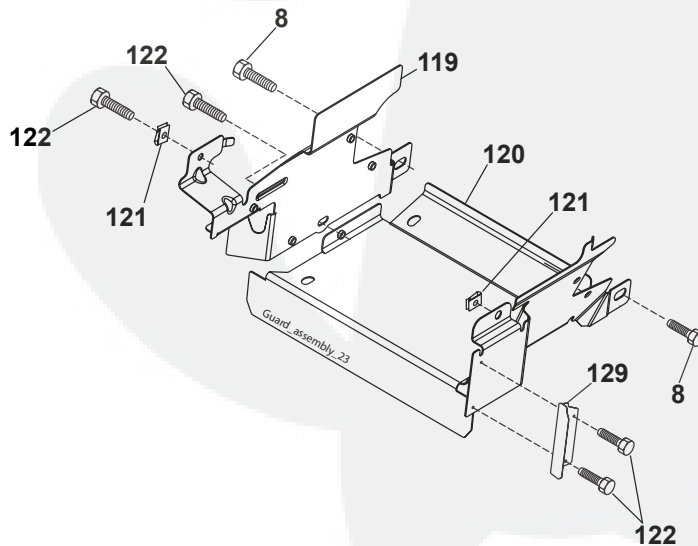
ENGINE



**OPTIONAL EQUIPMENT**  
**Spark Arrester**



engine-bs.1cyl\_61



# REPAIR PARTS

TRACTOR - MODEL NO. UN1842SBHK (96011027500), PRODUCT NO. 960 11 02-75  
ENGINE

KEY NO.	PART NO.	DESCRIPTION
1	532 17 05-51	Control Th/Ch LH Flag
2	817 72 04-08	Screw Hex Thd Cut 1/4-20 x 1/2
3	-----	Engine B&S Model No. 31N707 (Order parts from engine manufacturer)
4	532 13 73-52	Muffler
8	532 17 18-77	Bolt
13	532 16 52-91	Gasket
14	532 14 84-56	Tube Drain Oil Easy
23	532 16 98-37	Shield Brn/Dbr Guard
25	532 19 06-95	Control Choke
29	532 13 71-80	Kit Spark Arrester (Flat Scrn)
31	532 40 75-16	Tank Fuel Front
32	532 19 77-25	Cap Asm Fuel
33	532 12 34-87	Clamp Hose Black
37	532 13 70-40	Line Fuel 20"
38	532 18 16-54	Plug Drain Oil Easy
40	532 12 40-28	Bushing Snap Nyl Blk Fuel Line
44	817 67 04-12	Screw Hexwsh Thdrol 1/4-20 x 3/4
45	817 00 06-12	Screw 3/8-16 x 3/4
46	819 09 14-16	Washer 9/32 x 7/8 x 16 Ga.
72	532 19 23-34	Screw Socket HD 5/16-18 x .75
78	817 06 06-20	Screw 3/8-16 x 1-1/4 SMGML
81	873 51 04-00	Nut Keps Hex 1/4-20
119	532 19 79-49	Guard Pulley Engine LH
120	532 41 05-44	Guard Asm Engine RH
121	532 19 66-88	Clips Threaded
122	532 13 77-29	Screw
129	532 40 03-28	Guard Pulley Eng. Adapter

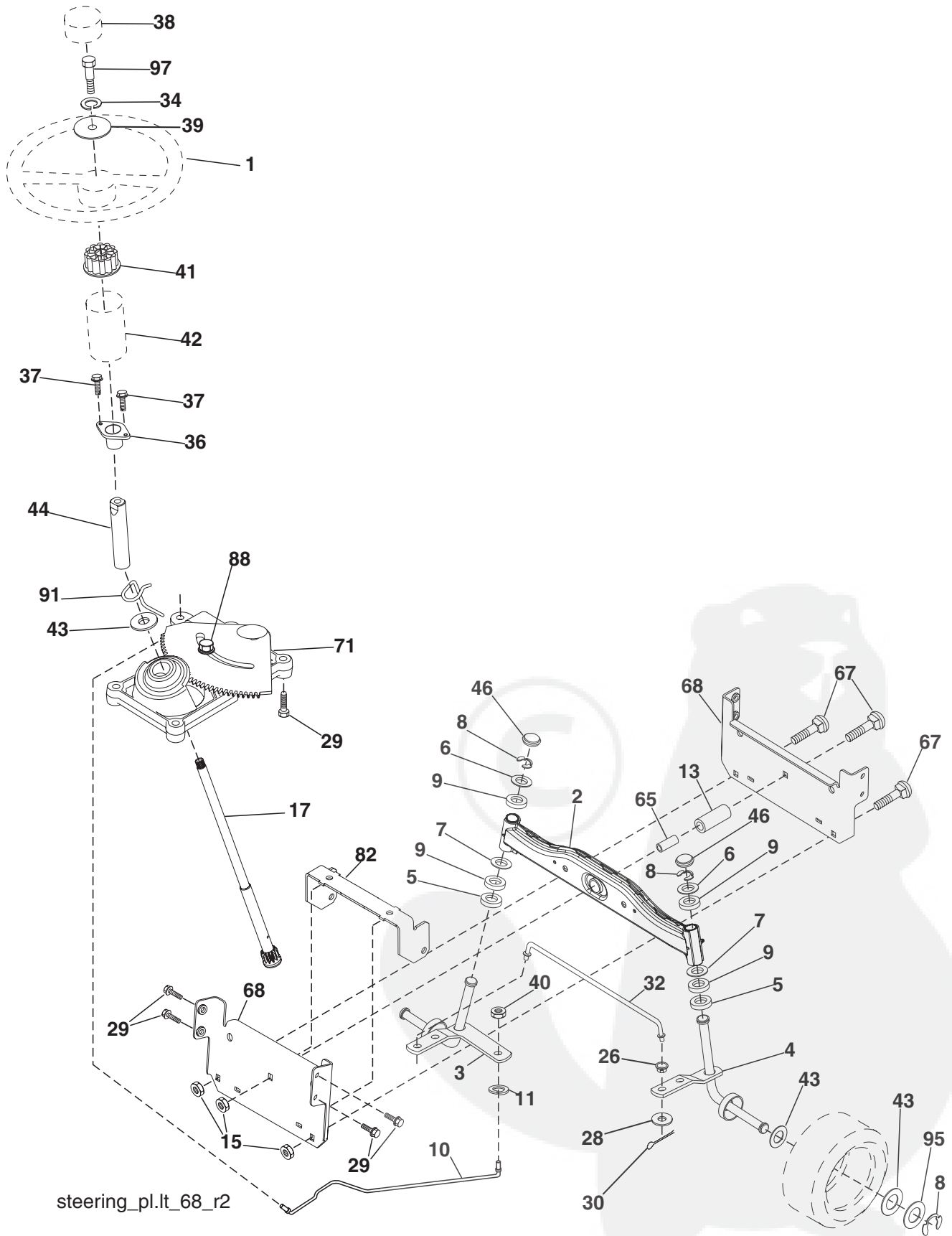
**NOTE:** All component dimensions given in U.S. inches  
1 inch = 25.4 mm

## Engine Power Rating Information

The gross power rating for individual gas engine models is labeled in accordance with SAE (Society of Automotive Engineers) code J11940 (Small Engine Power & Torque Rating Procedure), and rating performance has been obtained and corrected in accordance with SAE J1995 (Revision 2002-5). Actual gross engine power will be lower and is affected by, among other things, ambient operating conditions and engine-to-engine variability. Given both the wide array of products on which engines are placed and the variety of environmental issues applicable to operating the equipment, the gas engine will not develop the rated gross power when used in a given piece of power equipment (actual "on-site" or net horsepower). This difference is due to a variety of factors including, but not limited to, accessories (air cleaner, exhaust, charging, cooling, carburetor, fuel pump, etc.), application limitations, ambient operating conditions (temperature, humidity, altitude), and engine-to-engine variability. Due to manufacturing and capacity limitations, Briggs & Stratton may substitute an engine of higher rated power for this Series engine.

# REPAIR PARTS

TRACTOR - MODEL NO. UN1842SBHK (96011027500), PRODUCT NO. 960 11 02-75  
STEERING ASSEMBLY



steering\_pl.lt\_68\_r2

# REPAIR PARTS

TRACTOR - MODEL NO. UN1842SBHK (96011027500), PRODUCT NO. 960 11 02-75  
STEERING ASSEMBLY

KEY NO.	PART NO.	DESCRIPTION
1	532 19 45-95	Wheel Steering
2	532 19 56-73	Axle Asm
3	532 16 98-40	Spindle Asm LH
4	532 16 98-39	Spindle Asm RH
5	532 12 49-31	Bearing Race Thrust Harden
6	532 12 17-48	Washer 25/32 x 1-5/8 x 16 Ga.
7	819 27 20-16	Washer 27/32 x 1-1/4 x 16 Ga.
8	812 00 00-29	Ring Klip #t5304-75
9	532 12 49-37	Bearing Col Strg Blk
10	532 17 51-21	Link Drag
11	810 04 06-00	Washer Lock Hvy Hlcl Spr 3/8
13	532 13 65-18	Bearing Axle STLT/GT
15	532 14 52-12	Nut Hexflange Lock
17	532 19 07-53	Shaft Asm Strg
26	532 12 68-47	Bushing Link Drag Blk LR
28	819 13 14-16	Washer 13/32 x 7/8 x 16 Ga.
29	817 00 06-12	Screw 3/8-16 x 3/4 SMGML
30	876 02 04-12	Pin Cotter 1/8 x 3/4 Cad
32	532 19 27-57	Rod Tie Wire Form
34	810 04 05-00	Washer Lock Hvy HL CL. SPR. 5/16
36	532 15 50-99	Bushing Strg
37	532 15 29-27	Screw
38	532 19 46-03	Insert Cap Strg Wh
39	819 11 38-12	Washer 1/32 ID x 2 3/8 OD x 12 Ga.
40	873 54 06-00	Crownlock 3/8-24
41	532 18 67-37	Adaptor Wheel Strg
42	532 16 96-33	Boot Steering Shaft
43	532 12 17-49	Washer 25/32 x 1 1/4 x 16 Ga.
44	532 19 07-52	Extension Steering Shaft
46	532 12 12-32	Cap Spindle Fr Top Blk
65	532 41 47-36	Spacer Axle
67	872 11 06-18	Bolt RDHD SQNK 3/8-16 x 2-1/4
68	532 16 98-27	Axle, Brace
71	532 17 51-46	Steering Asm.
82	532 19 99-78	Bracket Suspension Chassis Front
88	532 17 51-18	Bolt Shoulder 7/16-20 unc
91	532 17 55-53	Clip Steering
95	532 18 89-67	Washer Hardened
97	874 78 05-64	Bolt 5/16-18 unc X 4"L Gr.5

**NOTE:** All component dimensions given in U.S. inches.  
1 inch = 25.4 mm.



# REPAIR PARTS

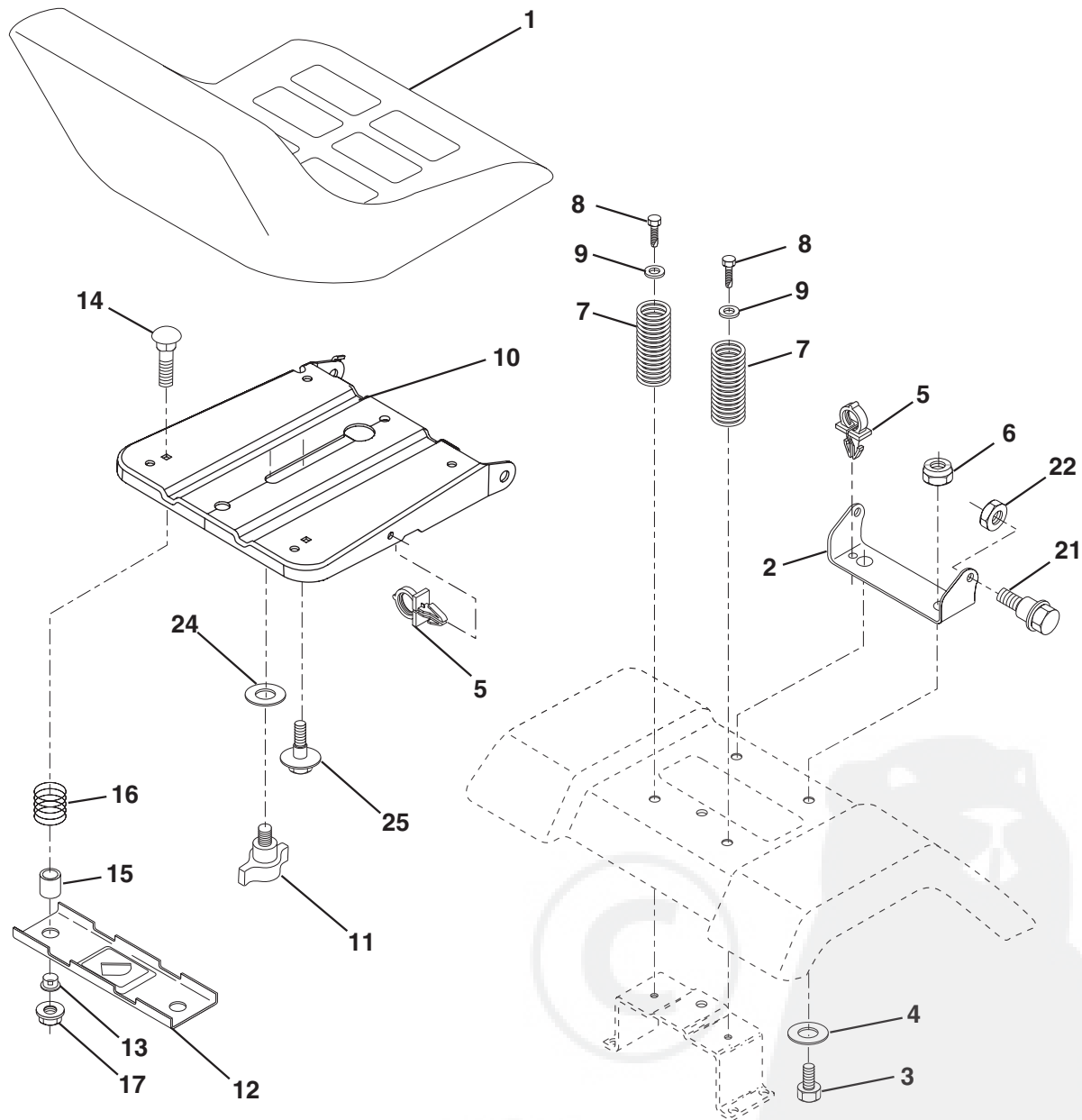
**TRACTOR - MODEL NO. UN1842SBHK (96011027500), PRODUCT NO. 960 11 02-75  
MOWER DECK**

KEY NO.	PART NO.	DESCRIPTION	KEY NO.	PART NO.	DESCRIPTION
1	532 18 20-32	Housing Asm Mower	105	532 16 07-93	Latch
2	872 14 05-06	Bolt Rdhd Sqnk 5/16-18 unc x 3/4	106	532 12 50-04	Nut Weld .327/.304 #10 10-24
3	532 13 80-17	Bracket Asm Fr Sway Bar 38/42	113	817 00 05-10	Bolt 5/16-18 Hex Wsh Hd Lck Serr
4	532 16 54-60	Bracket Asm Deck 42"sway Bar	116	532 12 48-42	Bolt Shoulder
5	532 12 46-70	Retainer Spring	117	532 18 86-06	Wheel Gauge
6	532 17 80-24	Bar Sway Deck	118	873 93 06-00	Nut Centerlock 3/8-16 unc
8	532 19 30-03	Bolt/Washer Asm 7/16-20 UNF	119	819 12 14-14	Washer 3/8 x 7/8 x 14 Ga.
11	532 13 41-49	Blade Mower	134	532 15 69-41	Pin Head Rivet
13	532 19 28-72	Shaft Asm Mandrel	135	532 15 97-65	Bracket ASM WHL GA Rear LH 42
14	532 18 72-81	Housing Mandrel	136	532 15 59-86	Bar Adjusting Gauge Wheel
15	532 11 04-85	Bearing Ball Mandrel	138	532 15 97-63	Bracket ASM WHL GA Rear RH 42
16	532 17 44-93	Stripper Round Mower	139	532 15 97-67	Bracket ASM WHL GA Front RH 42
18	872 14 05-05	Bolt Carr 5/16-18 x 5/8	140	532 15 97-68	Bracket ASM WHL GA Front LH 42
19	532 13 28-27	Bolt Shoulder	142	532 19 57-84	Arm Spring Brake Mower
20	532 15 97-70	Baffle Vortex	143	532 15 71-09	Bracket Arm Idler 42"
21	873 68 05-00	Nut Crown Lock 5/16-18	144	532 15 86-34	Keeper Belt 42" Clutch Cable
23	532 17 75-63	Bracket Deflector Mower 42"	145	532 16 58-88	Pulley Idler Flat
24	532 10 53-04	Cap Sleeve 80 x 112 Blk Mower	146	532 17 19-77	Bolt Carriage Idler
25	532 12 37-13	Spring Torsion Deflector 2 52	147	532 17 97-48	Spring Extension
26	532 11 04-52	Nut Push Phos & Oil	148	532 16 90-22	Spring Return Idler
27	532 40 14-31	Shield Deflector	149	532 16 58-98	Retainer Spring Yellow
28	819 11 10-16	Washer 11/32 x 5/8 x 16 Ga.	150	819 09 12-10	Washer 9/32 x 3/4 x 10 Ga.
29	532 13 14-91	Rod Hinge 42"6 75 Wlg	152	532 18 15-55	Clutch Cable 42"
30	532 17 39-84	Screw Thdrol Washer Head	158	817 72 04-08	Screw Hex Thd Cut 1/4-20 x 1/2
31	532 18 76-90	Washer Spacer	159	872 14 06-14	Bolt Rdhd Sqn 3/8-16 unc x 1-3/4
32	532 15 35-35	Pulley Mandrel	184	819 13 14-10	Washer 13/32 x 7/8 x 10 Ga.
33	532 40 02-34	Nut Lock Flng	185	532 18 82-34	Head Asm Cable Clutch
34	872 11 06-12	Bolt RDHD 3/8-16 unc x 1-1/2 Gr. 5	207	532 19 42-08	Pin Cotter 5/16 Bow Tie Lock
36	532 13 14-94	Pulley Idler Flat 3 060	208	817 67 06-08	Screw 3/8 - 16 x 1/2
40	873 90 06-00	Nut Lock Flg. 3/8-16 unc	209	532 40 92-59	Cover Mandrel LH
45	532 12 47-88	Spring Retainer 1" Zinc/cad	210	532 40 92-58	Cover Mandrel RH
46	532 13 77-29	Screw Thdrol 1/4-20 x 5/8	304	532 41 05-22	Shield Side LH
48	532 13 39-44	Washer Hardened Samllr	305	532 41 05-23	Shield Side RH
52	532 13 98-88	Bolt Shoulder 5/16-18 unc Blkz	--	532 19 28-70	Mandrel Assembly (Includes Housing, Shaft and Shaft Hardware Only-Pulley Not Included)
53	532 18 49-07	Arm Asm Pad Brake			Replacement Mower, Complete (Order separately mulcher cover and gauge wheel components key nos. 101-106 and 116-119)
54	532 17 85-15	Washer Hardened			
55	532 15 50-46	Arm Idler 42"mower LT/YT	--	532 40 28-54	
56	532 16 57-23	Spacer Retainer Mower			
59	532 14 10-43	Guard, Belt			
67	532 10 69-32	Knob Rd 3/8-16 Plstc Thds Blk			
68	532 18 02-15	V-Belt Mower			
101	532 19 31-07	Cover Mulching			
102	871 08 10-10	Screw Pan HD 10-24 x 5/8			
103	819 06 12-16	Washer #10			
104	810 07 10-00	Washer Lock #10			

**NOTE:** All component dimensions given in U.S. inches  
1 inch = 25.4 mm

# REPAIR PARTS

TRACTOR - MODEL NO. UN1842SBHK (96011027500), PRODUCT NO. 960 11 02-75  
SEAT ASSEMBLY



seat\_lt.knob\_13

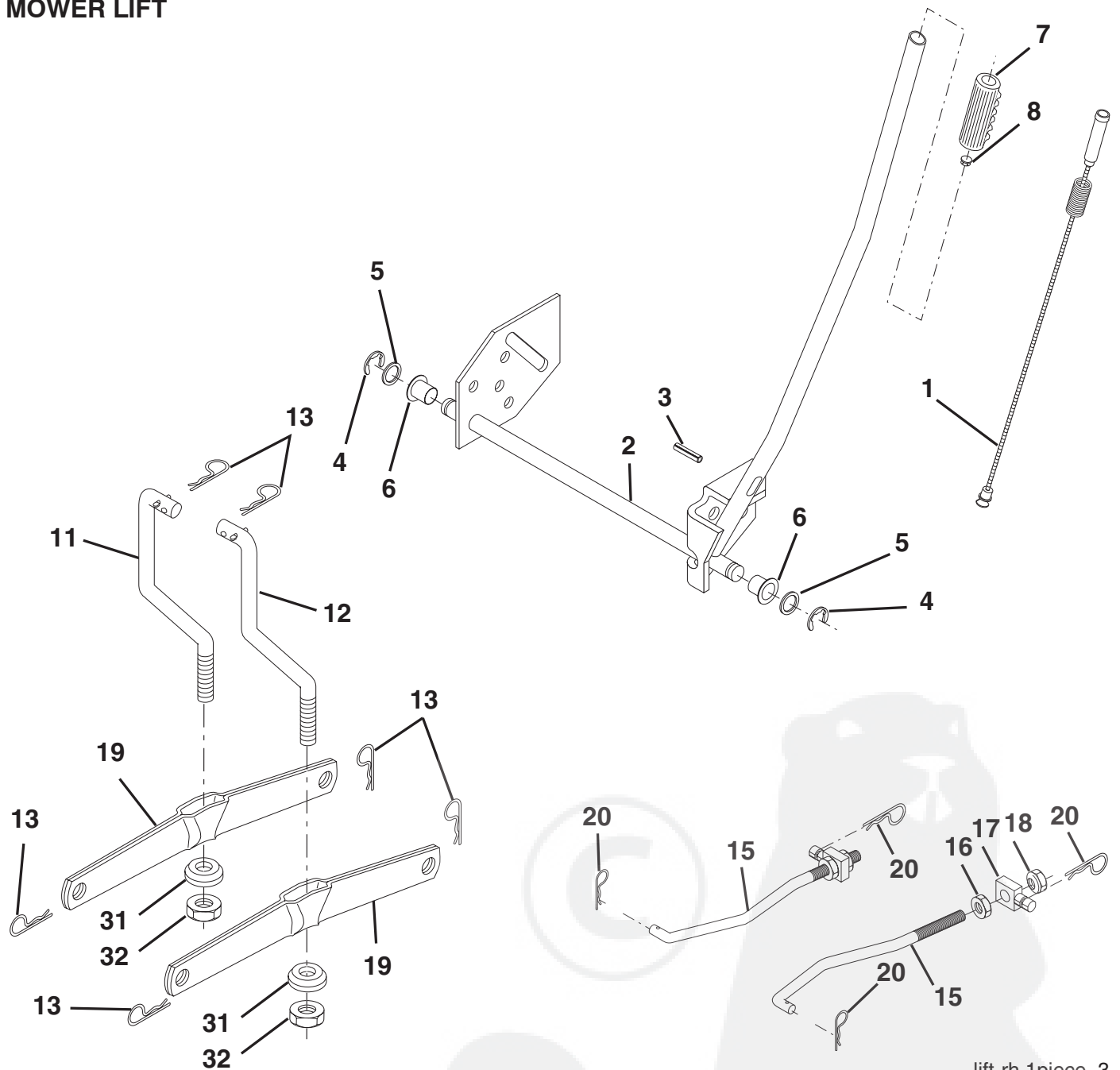
KEY NO.	PART NO.	DESCRIPTION	KEY NO.	PART NO.	DESCRIPTION
1	532 41 10-43	Seat	13	532 12 12-48	Bushing Snap Blk Nyl 50 Id
2	532 14 05-51	Bracket Pivot Seat	14	872 05 04-12	Bolt Rdhd Sqnk 1/4-20 x 1-1/2
3	871 11 06-16	Bolt Fin Hex 3/8-16 unc x 1	15	532 12 12-49	Spacer Split
4	819 13 16-10	Washer 13/32 x 1 x 10 Ga.	16	532 12 37-40	Spring Cprsn 1.310 Ga.
5	532 14 50-06	Clip Push-In	17	532 12 39-76	Nut Lock 1/4 Lge Flg Gr. 5 Zinc
6	873 80 06-00	Nut Hex w/Ins. 3/8-16 unc	21	532 17 18-52	Bolt SHLD 5/16-18 Unc-2A
7	532 12 41-81	Spring Seat Cprsn 2 250 Blk Zi	22	873 80 05-00	Nut Hex Lock W/Ins 5/16-18
8	817 00 06-16	Screw 3/8-16 x 1.5 SMGML	24	819 17 19-12	Washer 17/32 x 1-3/16 x 12 Ga.
9	819 13 16-14	Washer 13/32 x 1 x 14 Ga.	25	532 12 70-18	Bolt Shoulder 5/16-18 x .62
10	532 19 55-30	Pan Seat			
11	532 16 63-69	Knob Seat			
12	532 17 46-48	Bracket Mounting Switch			

**NOTE:** All component dimensions given in U.S. inches.  
1 inch = 25.4 mm



# REPAIR PARTS

TRACTOR - MODEL NO. UN1842SBHK (96011027500), PRODUCT NO. 960 11 02-75  
MOWER LIFT



lift-rh.1piece\_3

KEY NO.	PART NO.	DESCRIPTION
1	532 19 84-17	Wire Asm Inner Spring W/Plunger
2	532 19 80-70	Shaft Asm. Lift
3	532 18 88-22	Pin Groove
4	812 00 00-02	E Ring #5133-62
5	819 21 16-21	Washer 21/32 x 1 x 21 Ga.
6	532 12 01-83	Bearing Nylon
7	532 10 94-13	Grip Handle
8	532 12 45-26	Button Plunger
11	532 13 98-65	Link Lift LH
12	532 13 98-66	Link Lift RH
13	532 12 46-70	Retainer Spring
15	532 17 32-88	Link Front
16	873 35 08-00	Nut Jam Hex 1/2-13 unc
17	532 17 56-89	Trunnion
18	873 80 08-00	Nut Lock W/Wsh 1/2-13 unc
19	532 13 98-68	Arm Suspension Mower
20	532 19 42-09	Pin Cotter 7/16 Bow Tie Lock
31	532 16 98-65	Bearing Pvt. Lift
32	873 54 06-00	Nut Crownlock 3/8-24

**NOTE:** All component dimensions given in U.S. inches  
1 inch = 25.4 mm