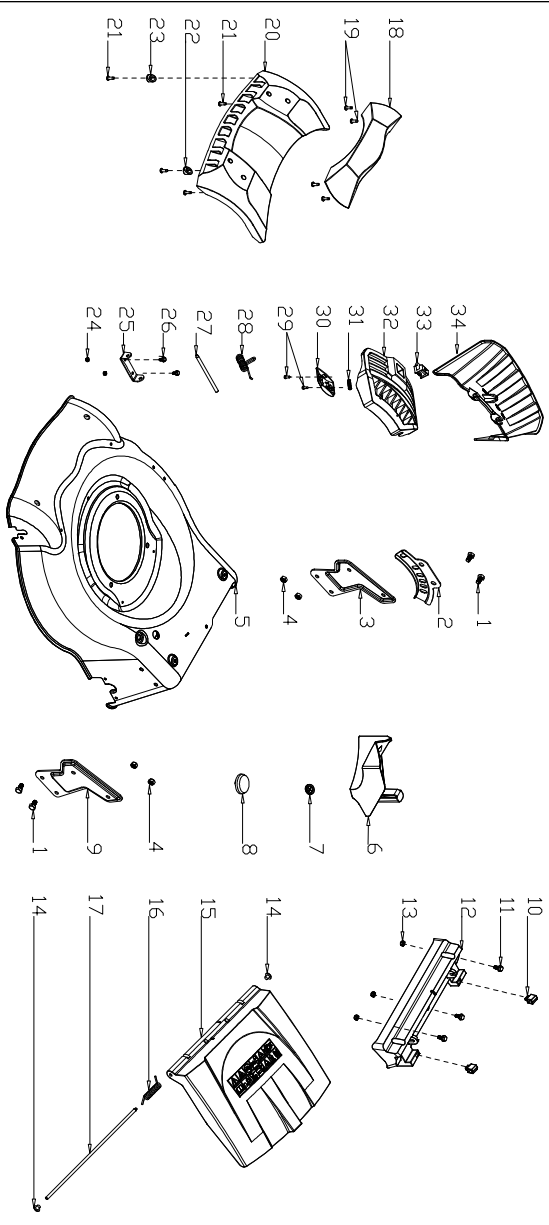
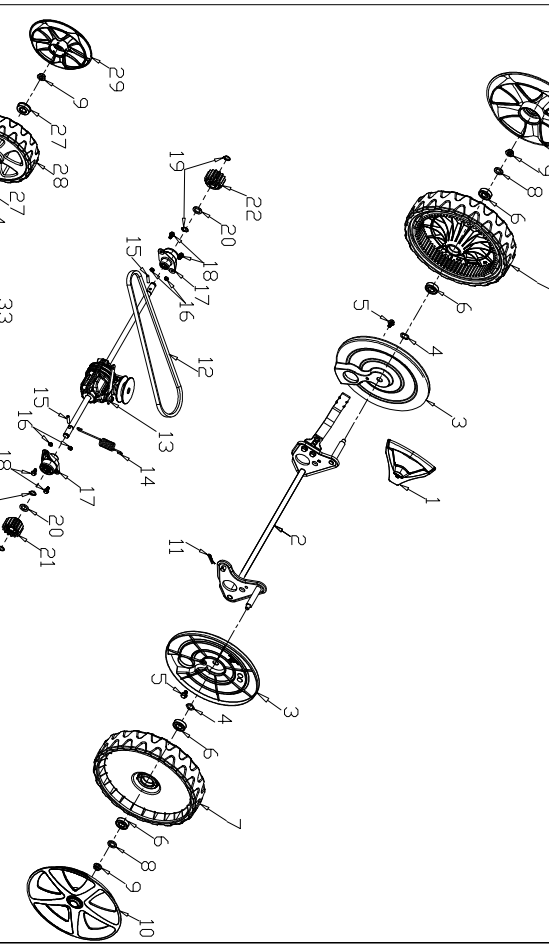


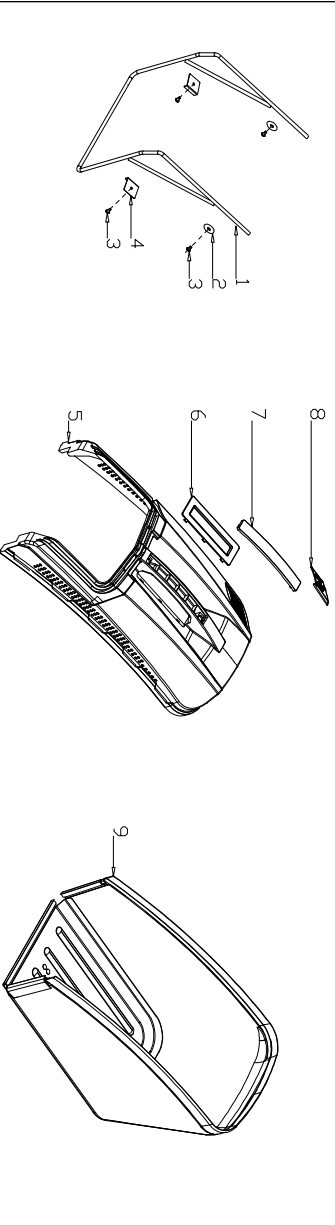
C



D



E



MODEL	ZE46-E80(SHL)
NO.	1866001

1866001-ZE46-E80 (SHL)

No.	Marks & Nos	DESCRIPTION	Specification	QTY
Part A				
A				
A-1	G33Q0000110	Plastic Decoration	ABS, G46, 圆管	1
A-2	G3374000001	Clutch Lever	Q235圆钢, ϕ 7.5	1
A-3	G335EA00056	Brake Lever	Q235圆钢, ϕ 7.5	1
A-4	G3XW0000000	Limiting Stopper	PA66	1
A-5	G33Q0000119	Plastic Decoration	ABS, G46, 圆管	1
A-6	G3320000000	Foam Pipe	NBR, 20×510×3	1
A-7	G333FE00056	Upper Handle	Q235焊接管, ϕ 22/t=1.35	1
A-8	B2011B00000	Nut	M6(总高11)	1
A-9	G339X300000	Cable Fixing Clamp	PA66+GAF	1
A-10	G339XYA0000	Clutch Cable	印G339XYA0000, 适用XF自走器	1
A-11	B1066B06032	Bolt	M6X32	1
A-12	G33B4000056	Lower Handle	Q235焊接管, ϕ 22/t=1.35	1
A-13	B1088W08050	Bolt	M8X50	4
A-14	B5019W00000	Flat Washer	Φ 8.5x Φ 16x1.5	4
A-15	G33C1100073	Knob	PP	4
A-16	B2020W00000	Nut	M8	4
A-17	G33H2000000	Cable Support	PP	2
A-18	B1087W08032	Bolt	M8X32	2
A-19	B2009W00000	Nut	M8	2
A-20	G33J0000000	Handle Plug	PP	2
A-21	E2043000019	Button	ABS	1
A-22	E204E000000	Spring	65Mn, ϕ 0.8	1
A-23	E2041000010	Upper cover	ABS	1
A-24	E2044000000	Fixed plate	PA6	1
A-25	B3061W00000	Screw	ST3.5X13	1
A-26	E2049000000	Trigger holder	PA6	1
A-27	E2045000000	Plate	65Mn, t=1.5	1
A-28	E204F000000	Pin	45#, ϕ 3	1
A-29	E2046000000	Spring	65Mn, ϕ 1.0	1
A-30	E2047000000	Sliding block	PA6+GF30%	1
A-31	B3034W00000	Screw	ST4.2X15-C型/盘头 ϕ 8	2
A-32	G33Y3000000	plate	PA6, G46	1
A-33	E2042000010	Lower Cover	ABS	1
A-34	B3046W00000	Screw	ST3.5X22-C型	2
A-35	B3045W00000	Screw	ST3.5X15-C型	3
A-36	B3044W00000	Screw	ST5.0X16-F型	1
A-37	E204D000000	Spring	65Mn, ϕ 1.0	1
A-38	E204C000000	Cabel	/	1
A-39	E204B000000	Cable base	PA6+GF30%	1
A-40	E204A000000	Cable holder	65Mn, t=1.5	1
Part B				
B				
B-1	E2SL1200019	Motor	DC80V, 手动切换电池, 长轴, 1200	1
B-2	B2028W00000	Nut	M8	3
B-3	E203D000000	Belt Wheel	Q235	1
B-4	E2037000000	Fan	/	1
B-5	G22K0000000	Screw Cap	PVC	2
B-6	G323N000000	Belt Cover	PP	1
B-7	B3022W00000	Screw	ST4.8X12-F-H	2
B-8	E203AX00010	Cover Plate	PP	1
B-9	B3034W00000	Screw	ST4.2X15-C型	2

B-10	S3514600000	Blade	40MnB/t=2.0	1
B-11	E203F000000	Blade Washer	65Mn	1
B-12	E2039000000	Blade Bolt	/	1
C	Part C			
C-1	B1036W08015	Bolt	M8X15	4
C-2	G34BD000000	Height Adjustment Plate	Q235, G46H	1
C-3	G32B0000000	Right Bracket	Q235/t=3	1
C-4	B2009W00000	Nut	M8	4
C-5	G3217Y00056	Deck	ST1.35	1
C-6	G36M0000000	Mulching Plug	ABS, G46	1
C-7	G32E0000000	Cable Sleeve	PVC, G46	1
C-8	G32DD000000	Plug	PP, G46	1
C-9	G32C0000000	Left Bracket	Q235/t=3	1
C-10	G32J0000000	Rear Cover Support	PP	2
C-11	B1059W06014	Nut	M6X14	3
C-12	G32A0000000	Rear Cover Pedestal	PP	1
C-13	B2008W00000	Nut	M6	3
C-14	G32K0000000	plug	PP, G46	2
C-15	G46B0000010	Rear Cover	PP	1
C-16	G36J0000000	Rear Cover Spring	碳素弹簧钢丝/φ=2	1
C-17	G36E0000000	Rear Cover Shaft	Q235圆钢/φ6	1
C-18	G3241100019	Lifting Handle	PP, G46	1
C-19	B3034W00000	Screw	ST4.2X15-C型	4
C-20	G3241000010	Front Face	PP, G46	1
C-21	B3044W00000	Screw	ST5.0X16-F	4
C-22	G32F0000000	Washer R	PP	1
C-23	G32G0000000	Washer L	PP	1
C-24	B2007W00000	Nut	M5	2
C-25	G3250000000	Side Discharge Bracket	Q235/t=2	1
C-26	B1052W05010	Nut	M5X10	2
C-27	G3260000000	Side Discharge Cover Shaft	Q235圆钢, φ6	1
C-28	G3271000000	Side Discharge Cover Spring	碳素弹簧钢丝/φ=2	1
C-29	B3034W00000	Screw	ST4.2X15-C型	2
C-30	G328CX00000	Cover Plate	PP	1
C-31	G328D000000	Spring	碳素弹簧钢丝	1
C-32	G328AX00000	Side Discharge Cover	PP, G46L	1
C-33	G328B000000	Locker	PP	1
C-34	G3290000000	Side-Discharge Guiding Board	PP	1
D	Part D			
D-1	G4420000019	Height Adjustment Handle		1
D-2	G3490000300	Rear Wheel Shaft Assy	G46SH	1
D-3	G34AC000000	Inner Wheel Cover	PP	2
D-4	B6009B00000	Spring Washer	φ13Xφ19X0.5X2	4
D-5	B1057W06010	Nut	M6X10	2
D-6	B0014W00000	Ball Bearing	R8-2RS	4
D-7	G34L0000000	10" Wheel	PVC+PP, G46SH	2
D-8	B5031W00000	Flat Washer	φ13.2Xφ24X3	4
D-9	B2017W00000	Nut	M8	4
D-10	G34V0000019	10" Wheel Cover	PP, G46H	2
D-11	BB004W00000	Split Pin	D2X20	1
D-12	BA00FB00000	Belt Li650	橡胶, Li650	1
D-13	G34APY00000	Gearbox	ADC12, XF	1
D-14	G34AJE00000	Spring	50CrVA	1
D-15	G34AN000000	Pin	Gcr15/φ5	2
D-16	B2007W00000	Nut	M5	4

D-17	G34DV000000	Shaft Sleeve	PA6, 含6001-2RS轴承	2
D-18	B1053W05012	Nut	M5X12	4
D-19	B9006B00000	Lock Ring	配 ϕ 12轴	4
D-20	B5033W00000	Flat Washer	ϕ 12. 2X ϕ 26X1. 5	2
D-21	G54AL000000	Left Gear	Fe-Cu-C	1
D-22	G54AM000000	Right Gear	Fe-Cu-C	1
D-23	G3451Y00000	Front Wheel Shaft	G46	1
D-24	B2008W00000	Nut	M6	4
D-25	B1058W06012	Nut	M6X12	4
D-26	B2016W00000	Nut	M6	1
D-27	B0019W00000	Bearing	12. 7X28. 6X8	4
D-28	G24F0000000	7" Wheel		2
D-29	G24R2000019	7" Outer Wheel Cover	PP, G42	2
D-30	G34AX100000	Height Adjustment Spring	碳素弹簧钢丝	1
D-31	G3410000100	Height Adjustment Connecting Ro	Q235焊接管, ϕ 14/t=1. 5	1
D-32	G349X000000	Shaft Sleeve	PA6	4
D-33	G3CT0000000	Shaft Sleeve	PA6	2
E	Part E			
E-1	G4661200000	Metal Bracket	Q235圆钢/ ϕ 7. 5	1
E-2	B5032W00000	Flat Washer	ϕ 5X ϕ 32X1. 2	4
E-3	B3022W00000	Screw	ST4. 8X12-F-H	4
E-4	G4661300000	fixed plate	t=1. 35	2
E-5	G4661110010	Plastic Cover	PP	1
E-6	G3661120010	Cover Plate	PP	1
E-7	G4661130019	Handle cover	PP, G48	1
E-8	G4661120019	Indicated Board	PP, G48	1
E-9	G1700100000	Fabric Bag	300g黑色布袋, PE边条021C, 吸塑	1