

A

B

C

D

E

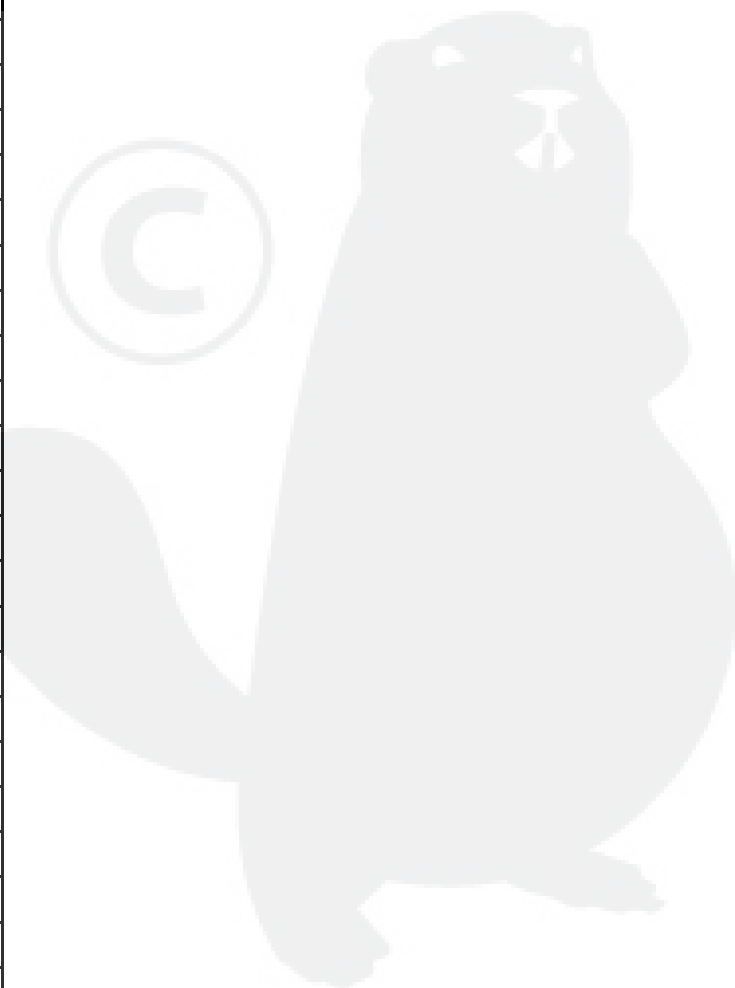
F

MODEL	G51SHL-C
NO.1766005	

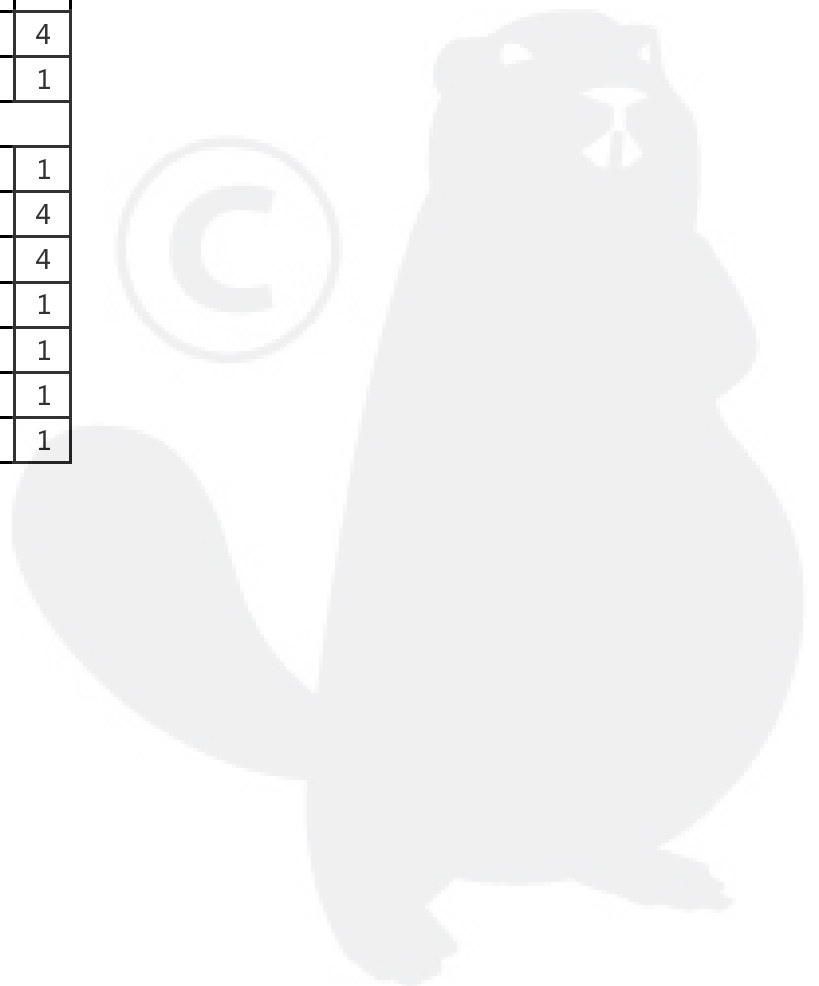
Pos.No	Part No.	Description	Qty
A	Part A		
A-1	G33Q0000110	Plastic Decoration	1
A-2	G3375000001	Clutch Lever	1
A-3	G3354000056	Brake Lever	1
A-4	G3XW0000000	Limiting Stopper	1
A-5	G33Q0000119	Plastic Decoration	1
A-6	G3320000000	Foam Pipe	1
A-7	G333F100056	Upper Handle Assy	1
A-8	G339X300000	Cable Fixing Clamp	1
A-9	G339XXA0000	Brake Cable	1
A-10	G339XYA0000	Clutch Cable	1
A-11	G33B4000056	Lower Handle	1
A-12	B1088W08050	Bolt	4
A-13	B5019W00000	Flat Washer	4
A-14	G33C1100073	Knob	4
A-15	B2020W00000	Nut	4
A-16	G33K0000000	Rope Guide	1
A-17	B2011B00000	Nut	1
A-18	G33H2000000	Cable Support	2
A-19	B1087W08032	Bolt	2
A-20	B2009W00000	Nut	2
A-21	G33J0000000	Handle Plug	2
B	Part B		
B-1	G33F0000000	Upper Cover of Left Panel	1
B-2	G33P0000000	Bolt	2
B-3	G33N0000000	Spring	2
B-4	G33L0000019	Plastic Grip	2
B-5	G33R0000000	Cable	1
B-6	B2008W00000	Nut	6
B-7	G33M0000000	Fixed plate	2
B-8	B1065W06030	Bolt	2
B-9	B1047W06040	Bolt	2
B-10	G33G0000000	Lower Cover of Left Panel	1
B-11	B3034W00000	Screw	4
B-12	B3032W00000	Screw	6
B-13	G33E0000060	Handle Panel	1
B-14	G33FX000000	Upper Cover of Right Panel	1
B-15	G33T0000000	Bush	1
B-16	G33SS000000	Cable	1
B-17	G33GX000000	Lower Cover of Right Panel	1
C	Part C		
C-1	Y3TZ0000056	Engine	1
C-2	B1077W08025	Screw	3
C-3	BE001W00000	Flat Key	1
C-4	G34AWY00000	Blade Adapter	1
C-5	G22K0000000	Screw Cap	2
C-6	G523N000000	Belt Cover	1

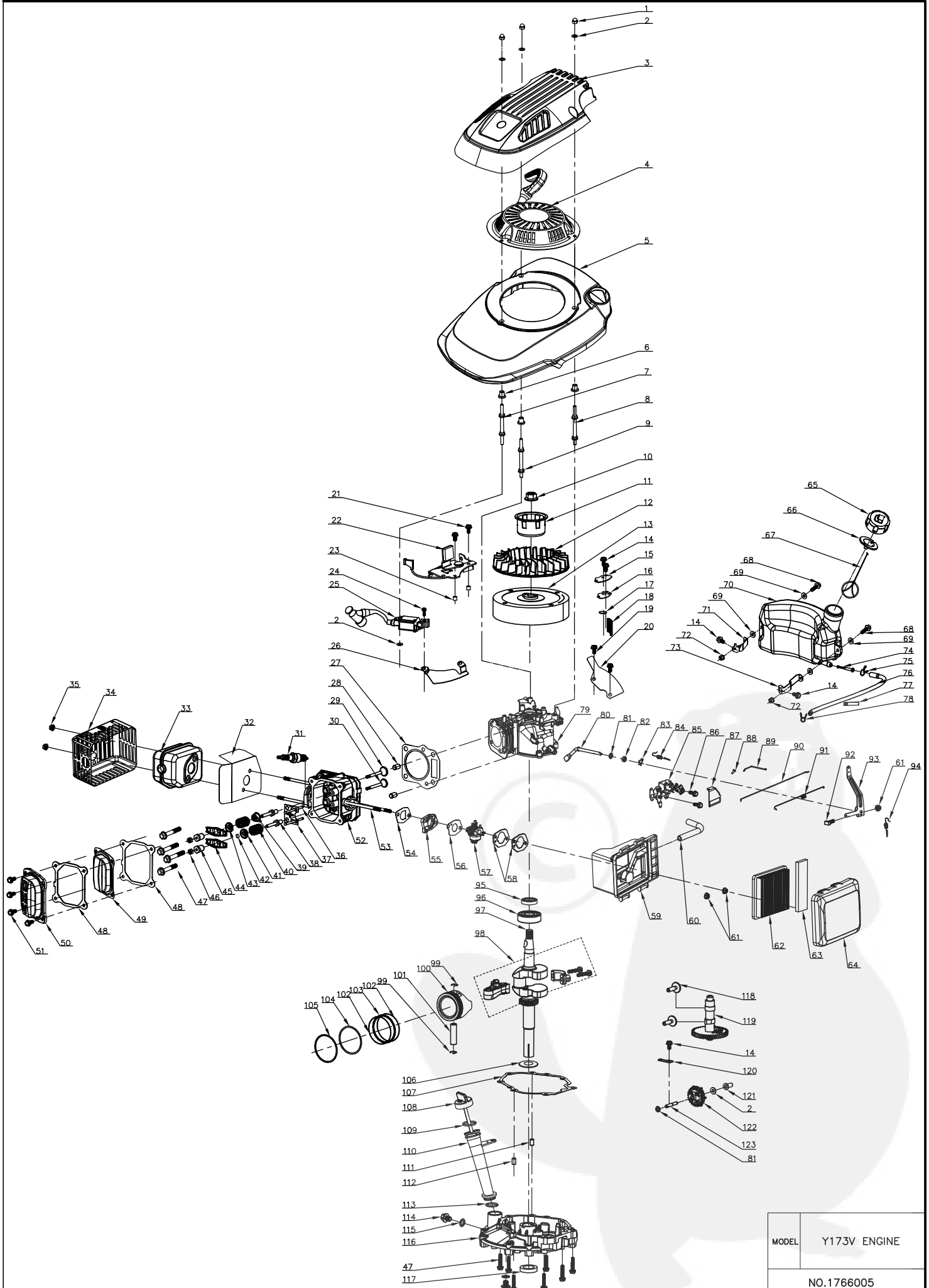


Pos.No	Part No.	Description	Qty
C-7	B3022W00000	Screw	2
C-8	G323G000000	Cover Plate	1
C-9	G323H000000	Cover Plate	1
C-10	B3034W00000	Screw	2
C-11	G5510000000	20" Blade	1
C-12	G3520000000	Blade Washer	1
C-13	B1001B00032	Blade Bolt	1
D	Part D		
D-1	B1036W08015	Bolt	4
D-2	G54BD000000	Height Adjustment Plate	1
D-3	G32B0000000	Right Bracket	1
D-4	B2009W00000	Nut	4
D-5	G5216Y00056	Deck	1
D-6	G56N0000000	Mulching Plug	1
D-7	G52E0000000	Cable Sleeve	1
D-8	BD001B00000	Seal Ring	1
D-9	G32D0000100	Washing Linker	1
D-10	B2025B00000	Plastic Nut	1
D-11	G32C0000000	Left Bracket	1
D-12	G32J0000000	Rear Cover Support	2
D-13	B1059W06014	Bolt	3
D-14	G32A0000000	Rear Cover Pedestal	1
D-15	B2008W00000	Nut	3
D-16	G32K0000000	plug	2
D-17	G36B0000010	Rear Cover	1
D-18	G36J0000000	Rear Cover Spring	1
D-19	G36E0000000	Rear Cover Shaft	1
D-20	G3241100019	Front Plastic Face Handle	1
D-21	B3034W00000	Screw	4
D-22	G3241000010	Front Plastic Face	1
D-23	B3044W00000	Screw	4
D-24	G52F0000000	Washer L	1
D-25	G52G0000000	Washer R	1
D-26	B2007W00000	Nut	2
D-27	G3250000000	Side Discharge Bracket	1
D-28	B1052W05010	Bolt	2
D-29	G5260000000	Side Discharge Cover Shaft	1
D-30	G3271000000	Side Discharge Cover Spring	1
D-31	G5280000000	Side Discharge Cover	1
D-32	G5290000000	Side-Discharge Guiding Board	1
E	Part E		
E-1	G3420000019	Height Adjustment Handle	1
E-2	G5490000300	Rear Wheel Shaft Assy	1
E-3	G54AD000000	Inner Wheel Cover	2
E-4	B6009B00000	Spring Washer	4
E-5	B1057W06010	Bolt	2
E-6	B0014W00000	Ball Bearing	4



Pos.No	Part No.	Description	Qty
E-7	G54N0000000	11" Wheel	2
E-8	B5031W00000	Flat Washer	2
E-9	B2017W00000	Nut	4
E-10	G54X0000019	11" Outer Wheel Cover	2
E-11	BB004W00000	Split Pin	1
E-12	BA007B00000	Belt Li700	1
E-13	G34APY00000	Gearbox	1
E-14	G34AJ000200	Spring	1
E-15	G34AN000000	Pin	2
E-16	B2007W00000	Nut	4
E-17	G34D0000000	Shaft Sleeve	2
E-18	B1053W05012	Bolt	4
E-19	B9006B00000	Lock Ring	4
E-20	B5033W00000	Flat Washer	2
E-21	G54AL000000	Left Gear	1
E-22	G54AM000000	Right Gear	1
E-23	G6451Y00000	Front Wheel Shaft	1
E-24	B2008W00000	Nut	5
E-25	B1058W06012	Bolt	5
E-26	B2016W00000	Nut	1
E-27	B0019W00000	Bearing	4
E-28	G34H0000000	8" Wheel	2
E-29	G34T0000019	8" Outer Wheel Cover	2
E-30	G34AX100000	Height Adjustment Spring	1
E-31	G5410000100	Height Adjustment Connecting R	1
E-32	G349X000000	Precursor axle	4
E-33	G34APX20000	Limit Kits	1
F	Part F		
F-1	G3661200000	Metal Bracket	1
F-2	B5032W00000	Washer	4
F-3	B3022W00000	Screw	4
F-4	G3661110010	Plastic Cover	1
F-5	G3661120010	Cover Plate	1
F-6	G3641130019	Indicated Board	1
F-7	G1700100000	Fabric Bag	1





MODEL Y173V ENGINE

NO.1766005

Pos No.	Part No.	Description	Qty
1	B2002B00000	Nut M6	3
2	B5027B00000	"O" Ring $\phi 6.5 \times \phi 15 \times 0.5$	5
3	Y3A10000056	Engine Cover (Black color)	1
4	Y2A20000000	Recoil Start Assy	1
5	Y3A30000010	Blower Housing	1
6	Y2A40000000	Bush	3
7	Y3A70000000	Bolt I	1
8	Y3A80000000	Bolt II	1
9	Y3A90000000	Bolt III	1
10	B2015W00000	Nut M14*1.5	1
11	Y3A50000000	Start-up Hub	1
12	Y3A60000000	Fan	1
13	Y3B10000000	Flywheel	1
14	B1058W06012	Bolt M6*12	5
15	Y3250000000	Respirator Cover Plate	1
16	Y3240000100	Gasket of Respirator Cover	1
17	Y3230000000	Valve Element	1
18	Y2220000000	Lubricate Filtering Net	1
19	B1057W06010	Bolt M6*10	3
20	Y3AA00000000	Back plate	1
21	B1067W06035	BoltM6*35	2
22	Y3710000100	Brake Assy	1
23	Y37X00000000	Bush	2
24	B1064W06025	Bolt M6*25	1
25	Y2B200000000	Ignition	1
26	Y3AA00000100	Left Assy	1
27	Y31200000000	Gasket of Cylinder Head	1
28	Y22600000000	Locating Pin	2
29	Y35200000000	Inlet valve	1
30	Y35300000000	Outlet valve	1
31	Y2B300000000	Spark Plug	1
32	Y29300000000	Gasket of Muffler	1
33	Y39100000000	Muffler Assy	1
34	Y39200000000	Muffler Cover Assy	1
35	B2016W00000	Locknut M6	2
36	Y35C00000000	Guide Board of Handspike	2
37	Y35E00000000	Handspike Assy	1
38	Y25800000000	Rocker Support Bolt of Valve	2
39	BC011H00000	Oil Seal of valve	1
40	Y35400000000	Spring of Valve	2
41	Y25600000000	Spring Coil of outlet Valve	1



Pos No.	Part No.	Description	Qty
42	Y25D0000000	upper cap of outlet Valve	1
43	Y2550000000	Spring Coil of outlet Valve	1
44	Y2570000000	Rocker of Valve	2
45	Y2590000000	Adjust Nut of Valve	2
46	Y25A0000000	Combined Nut	2
47	B1080W08050	Bolt M8*50	10
48	Y2130000000	Gasket of Cylinder Head Cover	2
49	Y3140000000	Cylinder Head Inner Cover	1
50	Y3150000000	Cylinder Head Outer Cover	1
51	B1059W06014	Bolt M6*14	4
52	Y3110000000	Cylinder Head Assy	1
53	B4002W06092	Two Stud Bolt M6*92	4
54	Y3810000000	Paper Gasket of Inlet Pipe	1
55	Y3820000000	Air Inlet Pipe	1
56	Y3830000000	Paper Gasket of Carburetor	1
57	Y3850000100	Carburetor Assy	1
58	Y2840000000	Paper Gasket of Air Filter	2
59	Y2870000100	Air Filter Pedestal	1
60	Y38A0000000	Exhaust Pipe $\phi 8 \times \phi 12 \times 140$	1
61	B2012W00000	NutM6	3
62	Y3880000000	Paper Filter Element	1
63	Y28C0000000	Filter Element	1
64	Y2860000000	Air Filter Upper Cover	1
65	Y28H0000000	Fuel Tank Cap	1
66	Y28F0000000	Seal Gasket of Fuel Tank Cap	1
67	Y28T0000000	Connecting Rope	1
68	B1063W06022	Bolt M6*22	2
69	Y28S0000000	Gasket	4
70	Y28D0000000	Fuel Tank	1
71	Y38N0000000	Right Bracket of Fuel Tank	1
72	B2008W00000	Locknut M6	2
73	Y38M0000000	Left Bracket of Fuel Tank	1
74	Y28E0000000	Filtering Net Duct of Fuel	1
75	Y28K0000000	Oil Pipe Circlip I	1
76	Y38J0000000	Oil Pipe	1
77	Y28U0000000	Oil Pipe Fixing Clip	1
78	Y28L0000000	Oil Pipe Circlip II	1
79	Y3210000000	Crankcase Assy	1
80	Y3660000000	Speed Regulator Rocker Spindle	1
81	B5026W00000	Flat Washer	1
82	BC006B00000	Oil Seal 6*11*4	1



Pos No.	Part No.	Description	Qty
83	Y2670000000	Springness Split Pin	1
84	Y36A0000600	Speed Regulator Spring	1
85	Y2690000500	Speed Regulator choke assy	1
86	B1072W06008	NutM6*8	2
87	Y2690000504	Plate	1
88	B300CW00000	Screw	1
89	Y36D0000300	Handspike of choke	1
90	Y36B0000000	Handspike of Valve	1
91	Y36C0000000	Spring of Valve	1
92	B1085W06023	"T" type Bolt M6*23	1
93	Y3680000100	Speed Regulator Rocker	1
94	Y26A0000400	Speed Regulator Vice Spring	1
95	BC004B00000	Oil Seal 22*38*7	1
96	B0008W00000	Ball bearing	1
97	Y3410000000	Crankshaft Assy	1
98	Y3470000000	Connecting Rod Assy	1
99	Y3490000000	Circlip of Piston Pin	2
100	Y3420000000	Piston Assy	1
101	Y3480000000	Piston Pin	1
102	Y3450000000	Scraper Ring	2
103	Y3460000000	Bushing Ring	1
104	Y3440000000	Piston Ring II	1
105	Y3430000000	Piston Ring I	1
106	Y34A0000000	Gasket of Gear	1
107	Y3350000000	Gasket of Crankcase	1
108	Y3331200000	Lubricating Gauge	1套
109	BD006B00000	O Ring	1
110	Y3320000000	Lubricating Pipe	1
111	Y2360000000	Locating Pin of Crankcase	1
112	Y3360000000	Locating Pin of Crankcase	1
113	BD004H00000	"O" Ring $\phi 21 \times \phi 2.3$	1
114	B1016W10012	Draining Oil Bolt	2
115	B5021W00000	Draining Oil Bolt Gasket	2
116	Y3310000000	Crankcase Cover	1
117	BC008H00000	Oil seal 25*40*7	1
118	Y35B0000000	Tappet	2
119	Y3510000000	Camshaft Assy	1
120	Y2650000000	Gear Shaft Hold-down Plate	1
121	Y2640000000	Sliding Sleeve	1
122	Y2610000000	Gear Shaft Assy	1
123	Y3620000000	Circlip of Gear shaft	1



Pos No.	Part No.	Description	Qty
---------	----------	-------------	-----

