



---

# Operator's Manual

---

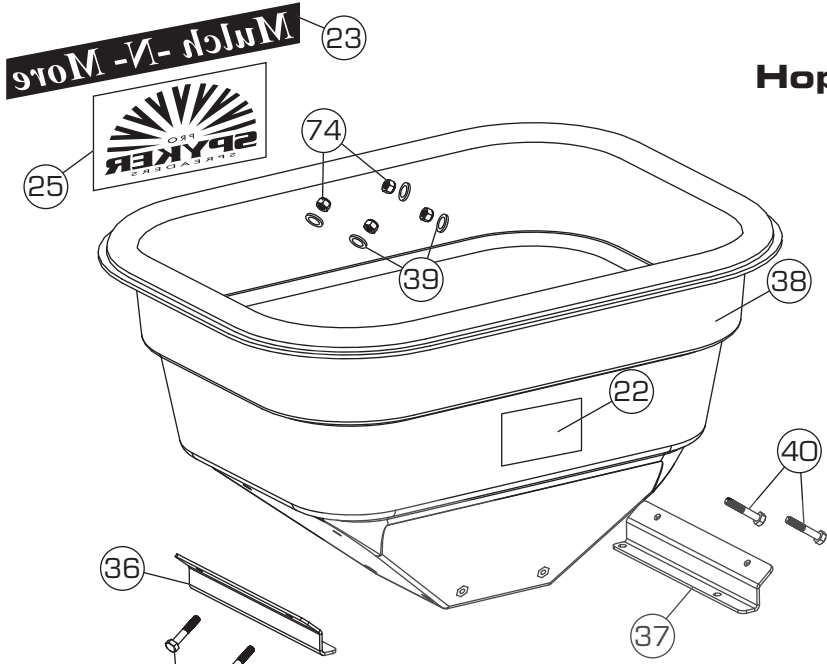
## Model S60-12020



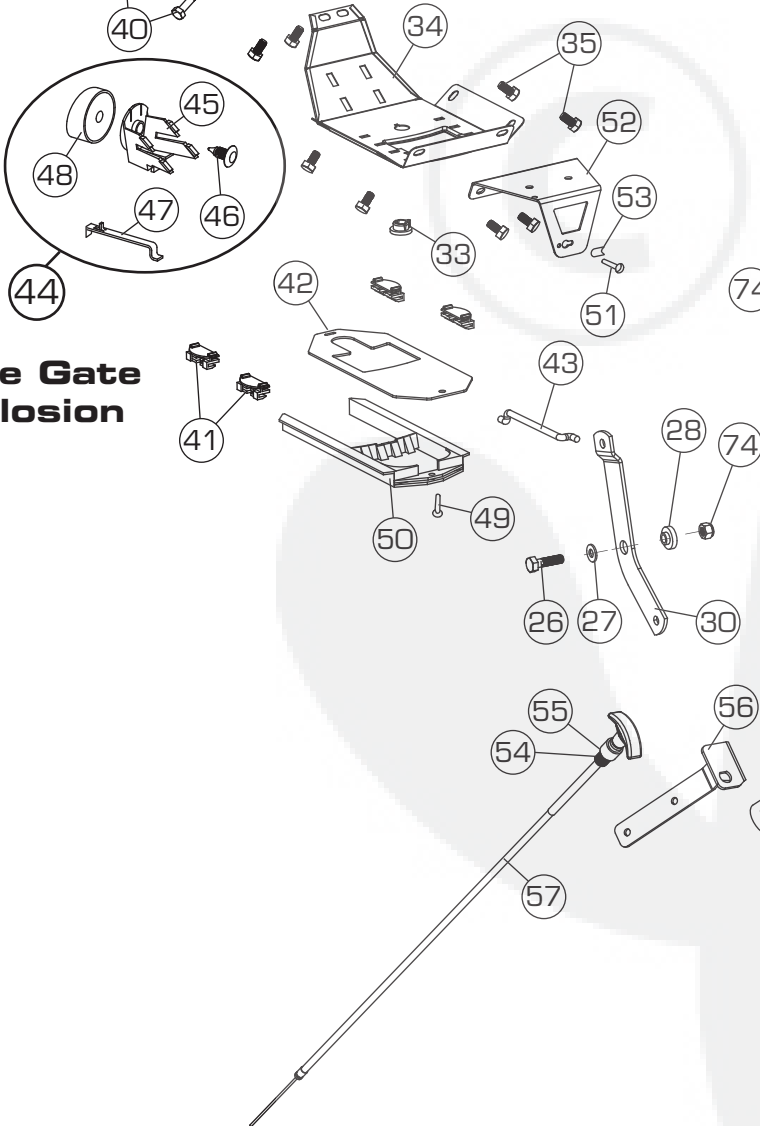
**▲IMPORTANT** This manual contains information for the safety of persons and property. Read it carefully before assembly and operation of the equipment!

**Spyker Spreaders**  
**Contact Us at 800.972.6130**

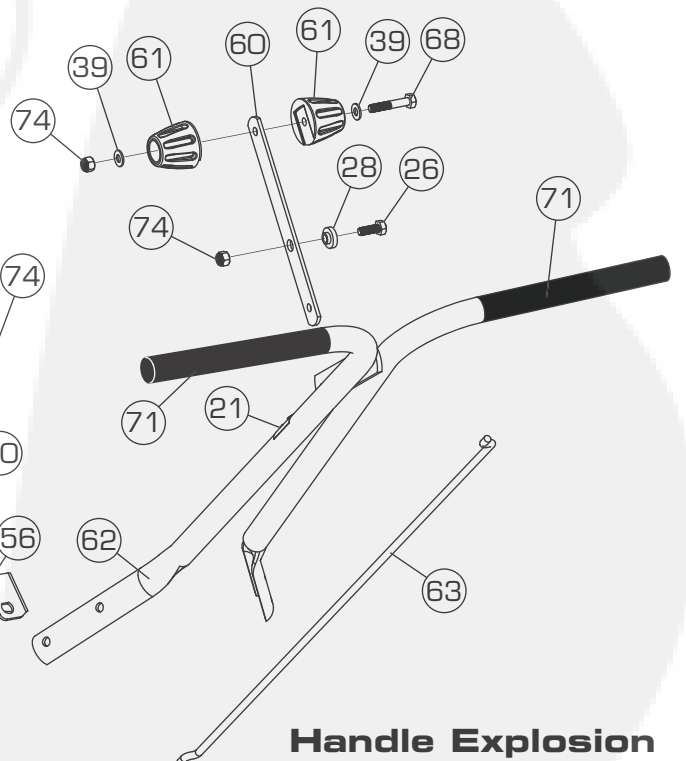
# Hopper Explosion



# Rate Gate Explosion



# Handle Explosion





No.	Part Number	Qty	Description	No.	Part Number	Qty	Description
1	1008268	1	Shaft, Upper Spinner	39	05-94-0064	6	Washer, Nylon
2	05-90-0012-R	2	Stainless Steel Collar	40	05-90-0121	4	Bolt, HexHd 1/4x3/4 SS
3	05-98-0071	4	Ball Bearing	41	05-94-0042	4	Guide, Rate Gate/ Accuway
4	1008290	1	Manual S60-12020	42	1008244	1	Rate Gate
5	SS-90-0001	2	Roll Pin 1/8 X 3/4	43	1008270	1	Linkage, Round
6	SS-92-0002	1	Felt Washer	44	05-296-0130	1	Rate Gate & Dial Assy
7	05-90-0094	2	3/8 Spinner Shaft Bushing	45	05-94-0069	1	Dial Mount
8	05-94-0034	1	Pinion Gear - Metal	46	05-94-0078	1	Pine Tree Clip
9	05-288-0035	1	Lower Spinner Shaft, 288	47	05-296-0110	1	Rate Gate Link, Polished
10	05-90-0080	8	Bolt, HexHd 1/4x1-3/4 SS	48	05-296-0131	1	Dial- Milled
11	05-90-0097	8	Bolt, FlgHd 10-24x5/8" SS	49	05-90-0044	1	Wire Fastener Pan Head
12	05-91-0008	8	Nut, NylonLock, #10-24 SS	50	05-296-0175	1	Accuway Diffuser
13	05-94-0037	1	Gear Box Cover Front	51	05-90-0055	1	Bolt, 10-32 x 1/2", SS
14	05-94-0038	1	Gear Box Cover Rear	52	05-288-1025	1	Cable Mount Bracket
15	05-98-0111	1	Grease Zerk 1/4-28	53	05-288-1022	1	Cable Retainer
16	05-90-0093	2	Gearbox Bushing 5/8"	54	05-91-0023	1	Hex Nut, M14 x1.5
17	05-90-0096	1	Dowel Pin, 3/16 x 1, SS	55	05-92-0013	1	Washer/internal Tooth
18	05-94-0033	1	Bevel Gear-metal	56	1008245	1	Bracket, Cable
19	05-288-1027	1	Nylon Spacer, Pin Retain	57	1008277	1	Cable Diffuser
20	1008275	1	Axle, Wheel	58	1008720	1	Screen 13-1/8 x 18- 7/8
21	05-99-0063	1	On-off Decal	59	05-95-0016-JD	2	Wheel, 12" Drive/Idle
22	05-93-0075	1	Spyker Accuway Label	60	1007773	1	Lever, Control
23	05-93-0109	1	Decal Mulch-n-more	61	B-8558	2	Knob, Handle
24	1008267	1	Coupling	62	1008069-01	1	Dual Handle Weld Polished
25	1008067	1	Decal Spyker Square Blue	63	1008269	1	Rod, Control
26	05-90-0047	2	Screw 1/4-20 X 1"HexHd,SS	64	SS-92-0002	1	Felt Washer
27	05-92-0008	7	Washer, 1/4" SS	65	SS-96-0003	1	Agitator Wire
28	05-94-0051	2	Nylon Flange Bushing	66	05-220-0140	1	Spinner - Drilled (black)
29	05-98-0051	2	Grease Zerk 1/4-28	67	05-90-0017	2	Bolt, 1/4-20 X 2-3/4"
30	1008246	1	Linkage, Pivot	68	05-90-0054	5	Bolt, HexHd 1/4x1-1/2 SS
31	1008273-01	1	Hopper Suppt Weld Polish	69	05-90-0065	1	Clevis Pin, 3/16x1-3/4
32	1008274-01	1	Axle Tube Weldm Polish	70	05-92-0004	5	Washer, Flat SS
33	SS-94-0007	1	Hopper Bottom Bearing	71	05-94-0022	2	Handle Grips, .930id X
34	05-296-2215	1	Mulch Bottom, Polished	72	05-97-0031	1	Spinner Clip SS
35	99-10-0205	8	Bolt, HexHd 1/4x1/2 SS	73	SS-297-0003	1	Agitator Wire
36	1008250LH	1	Brace, Hopper LH	74	SS-91-0004	21	Nut, NylonLock 1/4-20, SS
37	1008250RH	1	Brace, Hopper RH	75	05-90-0102	1	Hair Pin, SS Pivot Mount
38	1008271	1	Hopper, 120 Drilled	76	05-90-0040	1	Rue Ring Locking Pin
				77	1007794	2	Brace, Cross