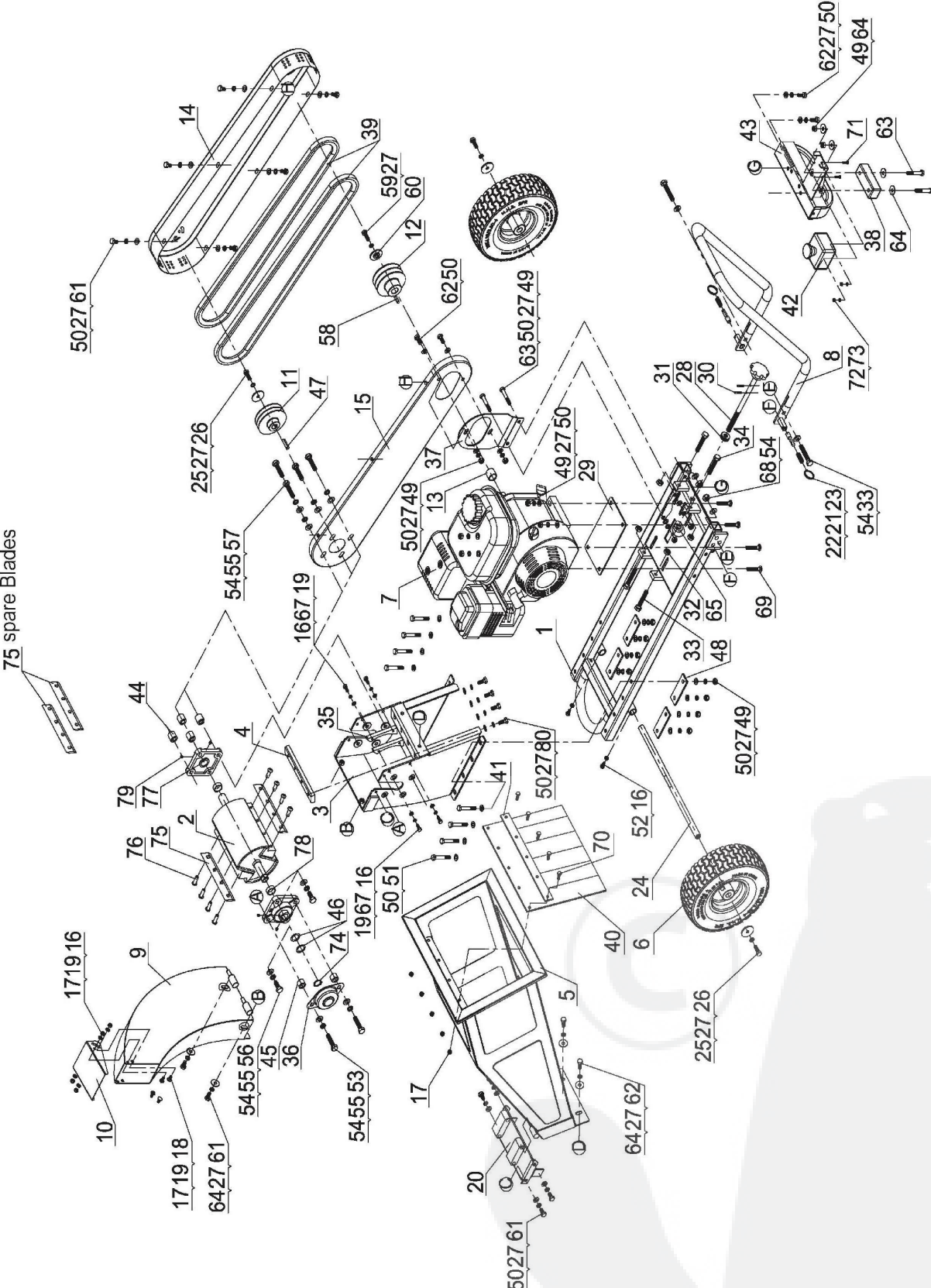


XLZCPR070



XLZCPR070

Ref#	Drawing No.	Description
1	CPR070-01000	Base Weldment
2	CPR070-02100	Roller Wdlement
3	CPR070-03000	Shredder Hopper
4	CPR070-00002-DY	Striker Plate
5	CPR070-04000	Inlet Hopper Assembly
6	CPR070-10000	Wheel
7		Engine
8	CPR070-05000	Handlebar
9	CPR070-06000	Output Hopper Assembly
10	CPR070-00005	Baffle
11	CPR070-00007	Belt Pulley
12	CPR070-00008	Engine Belt Pulley
13	CPR070-00009-DX	Engine Bushing
14	CPR070-07000	Belt Pulley Cover Weldment
15	CPR070-12000	Belt Pulley Base Plate Weldment
16	9101-06012-DX8.8	Hex Bolt M6x12
17	9206-06000-DX	Nylon Lock Nut M6
18	9114-06012-DX	Step Bolt M6x12
19	9301-06000-DX	Flat Washer Ø6
20	CPR070-08000	Roller Cover Plate Weldment
21	Z330-00003-FH	Spring B
22	Z330-00008-DX	Pawl B
23	Z330-00017-DX	Key Ring
24	CPR070-00001-DX	Wheel Axle
25	M010-00009-DX	Flat Washer (Ø8.5* Ø37*3)
26	9101-08025-DX8.8	Hex Bolt M8x25
27	9306-08000-DX	Lock Washer Ø8
28	CPR150-12000	Hand Wheel
29	CPR070-09000	Engine Transition Plate
30	9402-04022-FH	Elastic Cylindrical Pin
31	9608-26/12/9	Thrust Ball Bearing
32	9201-10000-DX	Hex Nut M10
33	9101-10060-DX8.8Q	Hex Bolt M10x60
34	9101-10055-DX8.8Q	Hex Bolt M10x55
35	CPR070-00003	Blade Protection Piece
36	CPR070-00004	End Cap
37	CPR070-00012	Shield Mounting Plate Assembly
38	CPR070-00011	Bumper Block
39	SPA1457	Belt
40	CPR070-00013	Inlet Hopper Rubber

XLZCPR070

Ref#	Drawing No.	Description
41	CPR070-00014	Mound Layer
42	CPR070-13000	Emergency Switch
43	CPR070-11000	Support Leg Assembly
44	CPR070-00015-DX	Belt Pulley Cover Bushing
45	CPR070-00016-DX	End Cup Bushing
46	N280-00043-FH	Adjustable Washer C
47	CPR070-00010	Flat Key
48	CPR070-00017	Connecting Plate
49	9206-08000-DX	Nylon Lock Nut M8
50	9301-08000-DX	Flat Washer Ø8
51	9101-08055-DX8.8	Hex Bolt M8x55
52	9201-06000-DX	Hex Nut M6
53	9101-10040-DX8.8	Hex Bolt M10x40
54	9302-10000-DX	Flat Washer Ø10
55	9306-10000-DX	Lock Washer Ø10
56	9101-10025-DX8.8	Hex Bolt M10x25
57	9101-10045-DX8.8	Hex Bolt M10x45
58		Engine Flat Key
59	9101-08030-DX8.8	Hex Bolt M8x30
60	CPR070-00018-DX	Gasket
61	9101-08016-DX8.8	Hex Bolt M8x16
62	9101-08020-DX8.8	Hex Bolt M8x20
63	9101-08050-DX8.8	Hex Bolt M8x50
64	9302-08000-DX	Large Flat Washer Ø8

XLZCPR070

Ref#	Drawing No.	Description
65	CPR070-00019-DX	Hand Wheel Spacer
67	9306-06000-DX	Lock Washer Ø6
68	9206-10000-DX	Nylon Lock Nut M10
69	9114-08045-DX8.8	Step Bolt M8x45
70	9101-06020-DX8.8	Hex Bolt M6x20
71	9110-04016-DX	Cross Recess Pan Head Screw M4x16
72	9301-04000-DX	Flat Washer Ø4
73	9206-04000-DX	Nylon Lock Nut M4
74	9304-20000-FH	Circlip for Shaft Ø20
75	CPR070-02001	Blade
76	9104-08020-FH10.9Q	Hex Socket Button Head Screw M8x20
77	GB/T7810-1995	Square Inert Ball Bearing
78	CPR070-00006-DX	Knife Dish Spacer
79	9121-06006-FH8.8	Hex Socket Set Screw with Cone Point M6x6
80	9105-08020-FH8.8Q	Hex Socket Head Cap Screw M8x20
		Srew Bag

