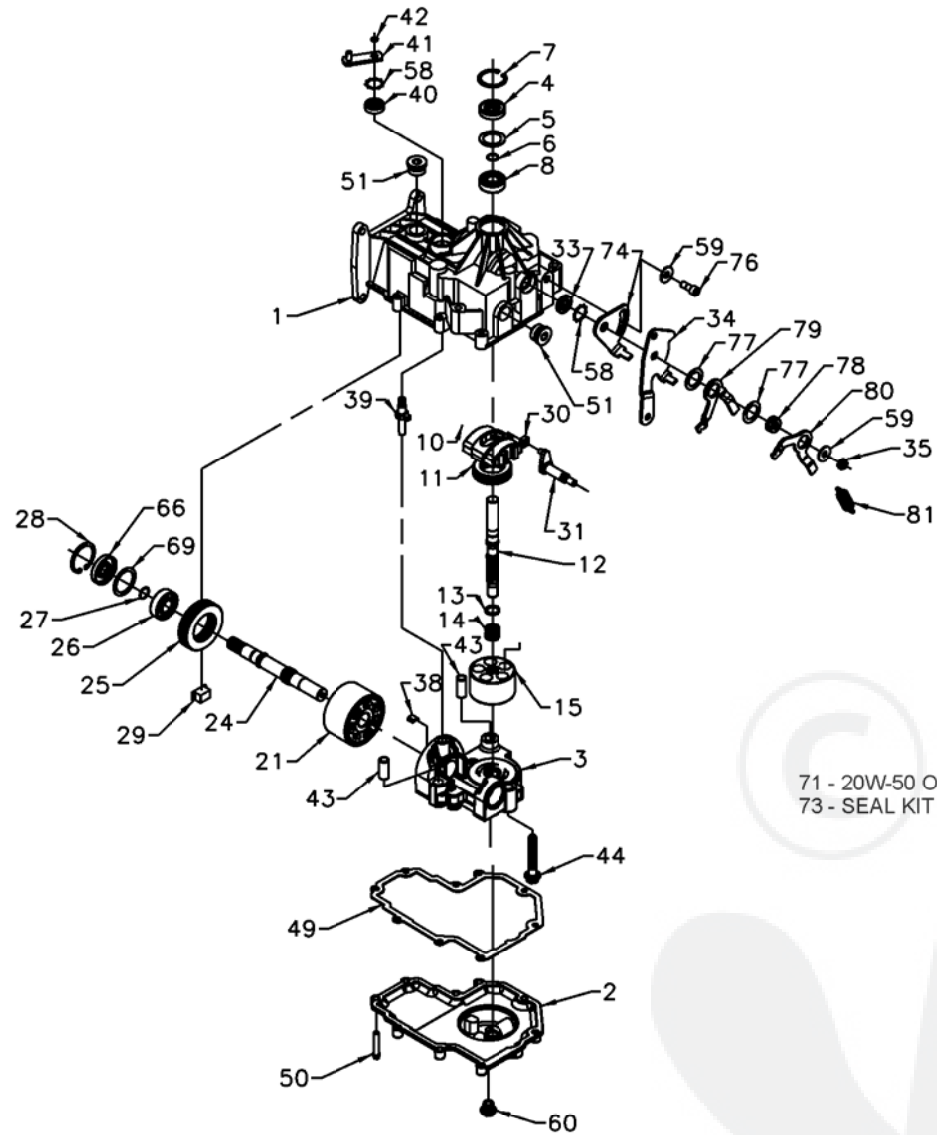


BDR-311



71 - 20W-50 OIL
73 - SEAL KIT

BDR-311

ITEM #	PART #	QTY	DESCRIPTION		
1	70834	1	UPPER HOUSING ASSEMBLY		
		1	UPPER HOUSING		
		1	TRUNNION BUSHING		
2	51611	2	CRADLE BEARING		
		1	LOWER HOUSING		
3	70709	1	KIT, CENTER SECTION		
		1	BUSHING .673 X 1.0 X .7		
		1	PLATE, BYPASS		
		1	CENTER SECTION		
		3	HFHCS 3/8-24 X 2.5 (PATCH)		
		2	CHECK PLUG ASSEMBLY (.027)		
		1	LIP SEAL		
		1	SPACER		
6	2003016	1	WIRE RETAINING RING		
7	2003052	1	RETAINING RING		
8	2003043	1	BALL BEARING		
10	2003087	1	VARIABLE SWASHPLATE		
11	50551	1	THRUST BEARING 30 X 52 X 13		
12	2003021	1	INPUT SHAFT		
13	2003017	1	BLOCK THRUST WASHER		
14	2003014	1	BLOCK SPRING		
15	70331	1	10cc CYLINDER BLOCK ASSEMBLY		
		5	PISTON SEAT WASHER		
		5	10cc PISTON		
		1	10cc CYLINDER BLOCK		
		5	10cc PISTON SPRING		
21	70082	1	21cc CYLINDER BLOCK ASSEMBLY		
		1	21cc CYLINDER BLOCK		
		7	PISTON SEAT WASHER		
		7	21cc PISTON		
		7	21cc PISTON SPRING		
		24	50933	1	OUTPUT (MOTOR) SHAFT
		25	50552	1	THRUST BEARING 42 X 68 X 16
26	50315	1	BALL BEARING		
27	2000022	1	WIRE RETAINING RING		
28	50329	1	RETAINING RING		
29	50649	1	RETAINER, MOTOR BEARING		

ITEM #	PART #	QTY	DESCRIPTION
30	2000015	1	SLOT GUIDE
31	50807	1	TRUNNION ARM
33	51041	1	LIP SEAL
34	51614	1	ARM, CONTROL
35	50108	1	HEX LOCK NUT, 5/16-24
38	70680	1	KIT, BYPASS PLATE
39	2003555	1	BYPASS ACTUATOR
40	45074	1	LIP SEAL
41	50270	1	BYPASS ARM
42	44870	1	RETAINING RING
43	50002	2	PIN
44	50016	3	SCREW
49	50331	1	GASKET
50	44876	9	SCREW-SELF TAPPING
51	9005110-8700	2	DRAIN PLUG
58	50650	2	RETAINING RING
59	44130	2	WASHER
60	9005200-5600	1	PLASTIC PLUG
66	51161	1	LIP SEAL 17 X 40 X 7
69	50951	1	SPACER
71	50006	34.6 OZ	20W50 OIL
73	70490	1	SEAL KIT
74	51493	1	ARM, RETURN
76	51400	1	SHCS 5/16-24 X .75 (PATCH)
77	51408	2	WASHER, NYLON
78	51396	1	SPACER RTN
79	51392	1	ARM, RTN SCISSOR, INNER
80	51393	1	ARM, RTN SCISSOR, OUTER
81	51399	1	SPRING EXTENSION