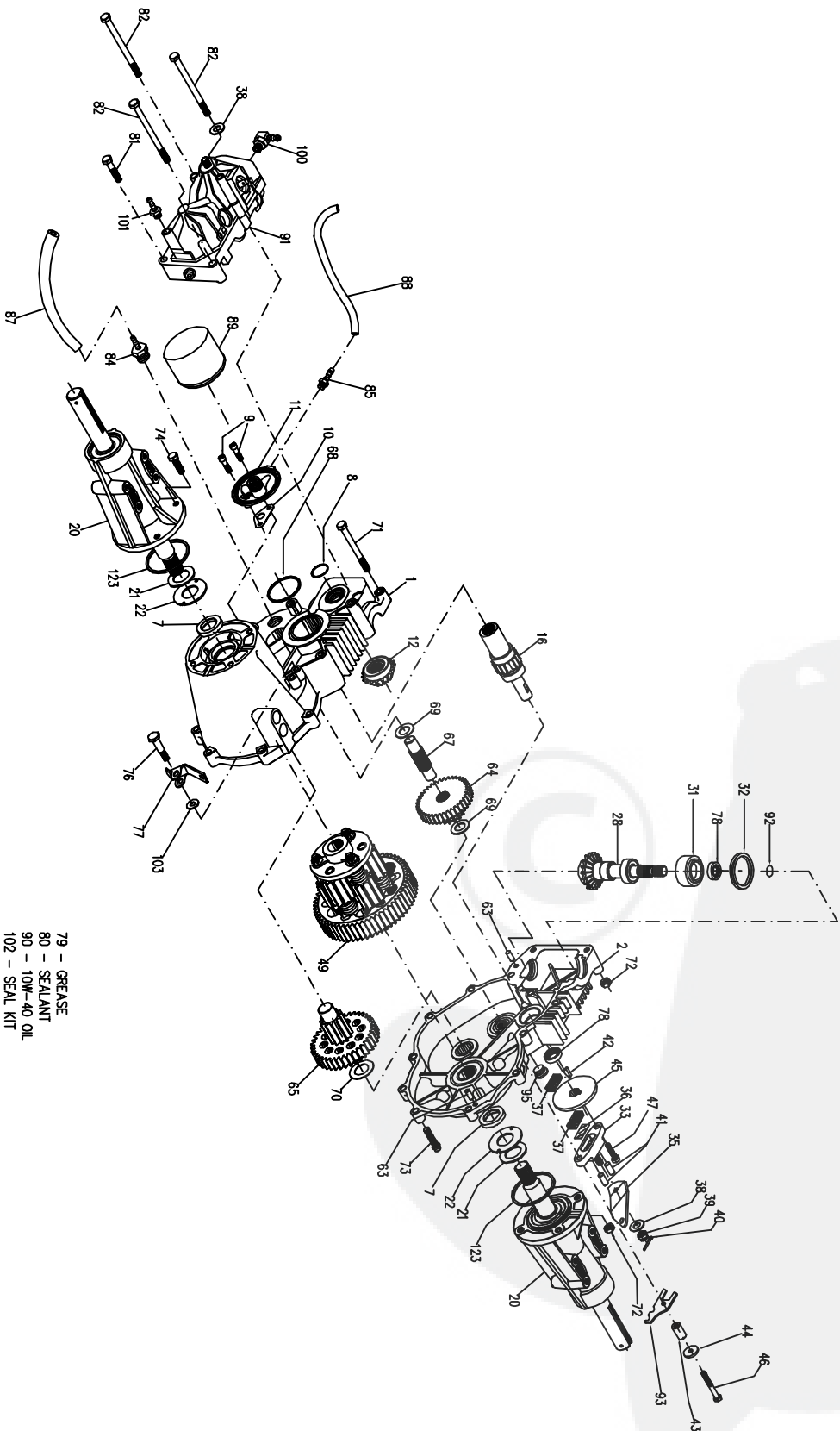


228-3010L



- 79 - GREASE
- 80 - SEALANT
- 90 - 10W-40 OIL
- 102 - SEAL KIT

228-3010L

ITEM NO.	HYDRO-GEAR PART NO.	QTY	DESCRIPTION	ITEM NO.	HYDRO-GEAR PART NO.	QTY	DESCRIPTION
1	70367	1	ASSEMBLY, L H HOUSING	37	44132	2	PUCK, BRAKE
		1	L H HOUSING	38	44130	1	WASHER, 7/80D X 7/16 X .060 HT
		1	DISC, THRUST 1-1/8 OD	39	44142	1	NUT, SLOTTED HEX
		1	BEARING, NEEDLE SC1412	40	44101	1	PIN, COTTER
		1	BEARING, BALL 25MM X 52MM	41	44127	2	PIN, BRAKE ACTUATING
		1	BEARING, NEEDLE - SCH 1012	42	44143	1	KEY, HI-PRO 3/16 X 5/8
		1	SEAL, OIL .984 X 1.5 X .25	43	23711	1	SPACER
		2	CAP SCREW, 1/4-20 X 1.0	44	44090	1	DISC, BRAKE
		1	GASKET, FILTER BASE	45	44300	1	BOLT, 1/4-20 X 2
		1	BASE, OIL FILTER	46	44333	1	BOLT, 1/4-20 X 1 W/NYLOK GR5
2	70364	1	ASSEMBLY, R H HOUSING	47	44433	1	DIFFERENTIAL ASSEMBLY
		1	HOUSING, R H TRANSAXLE	48	70244	1	GEAR, 10T PLANET DIFFERENTIAL
		1	BOLT, RIB NECK 5/16-18	49		1	GEAR, BEVEL, 12T
		1	WASHER, RUBBER 5/8 OD X .313 ID X .04			1	SPACER, SHAFT
		1	BEARING, NEEDLE SC1412			1	DIFFERENTIAL END CAP
		1	BEARING, BALL 25MM X 52MM			1	BOLT, 3/8-24 X 4.5 GD8
		1	BEARING, NEEDLE - SCH 1012			1	NUT, HEX LOOK 3/8-24 GD8
		1	SEAL, OIL .984 X 1.5 X .25			1	SHAFT, DIFFERENTIAL
		1	OIL SEAL, .984 X 1.5 X .25			1	GEAR, 60T DIFFERENTIAL
		1	QUAD RING			1	PIN, DOWEL
		1	GASKET, FILTER BASE	63	44757	2	GEAR, REDUCTION 14T-38T
		1	ASSY, FILTER BASE	64	44776	1	FINAL DRIVE PINION ASSEMBLY
		1	CAP SCREW, 1/4-20 X 1	65	70051	1	GEAR 38T
		2	GASKET, FILTER BASE			1	GEAR 12T
7	44782	1	ASSEMBLY, R H HOUSING	67	44779	1	SHAFT, JACK
8	50070	1	HOUSING, R H TRANSAXLE	68	44781	1	O-RING
10	44920	1	BOLT, RIB NECK 5/16-18	69	44795	2	WASHER, FL 5/8ID X 1-1/4 X .05
11	70053	1	WASHER, RUBBER 5/8 OD X .313 ID X .04	70	44794	1	WASHER, FL 7/8ID X 1-1/2OD HT
		1	BEARING, NEEDLE SC1412	71	44827	2	BOLT, HEX HD 5/16-18 X 3-1/2
		1	BEARING, BALL 25MM X 52MM	72	43063	4	HEX NUT 5/16-18
		1	BEARING, NEEDLE - SCH 1012	73	50868	11	TORX HEAD SCREW, 5/06-18
		1	SEAL, OIL .984 X 1.5 X .25	74	43089	7	CAP SCREW, HEX 5/16-18 X 1 GR5
		1	OIL SEAL, .984 X 1.5 X .25	75	44785	1	BOLT, SHOULDER
		1	QUAD RING	76	44786	1	ARM, FREEWHEEL, ACTUATING
		1	GASKET, FILTER BASE	77	44761	1	SEAL, OIL .625 X 1.0 X .25
		1	ASSY, FILTER BASE	78	50416	2	GREASE (10 OZ. TUBE)
		2	CAP SCREW, 1/4-20 X 1	79	50928	1	SEALANT
		1	GASKET, FILTER BASE	80	43084	1	BOLT, HEX 5/16-18 X 1-3/4 GR 5
		1	ASSY, FILTER BASE	81	44820	1	BOLT, 5/16-18 X 4-1/2 GR 5
		1	CAP SCREW, 1/4-20 X 1	82	50020	3	SAE PORT STRAIGHT FITTING 7/8
		1	GASKET, FILTER BASE	84	50010	1	SAE PORT STRAIGHT FITTING 7/16
		1	ASSY, FILTER BASE	85	50011	1	HOSE, 8-1/2" LONG
		1	CAP SCREW, 1/4-20 X 1	87	50012	1	HOSE, 10-1/2" LONG
		1	GASKET, FILTER BASE	88	51563	1	SPIN-ON FILTER
		1	ASSY, FILTER BASE	89		1	10W-40 OIL
		2	CAP SCREW, 1/4-20 X 1	90		66.7oz	BDU-10L-256
		1	GASKET, FILTER BASE	91		1	RING, WIRE RETAINING
		1	ASSY, FILTER BASE	92	2003016	1	MID BRACKET
		1	CAP SCREW, 1/4-20 X 1	93	17434A	1	PLUG, STRAIGHT THREAD
		1	GASKET, FILTER BASE	95	9005110-5600	1	OIL FITTING, 7/16-20
		1	ASSY, FILTER BASE	100	50009	1	OIL FITTING, 7/8-14
31	50925	1	ASSEMBLY, R H HOUSING	101	70052	1	SEAL KIT
32	50945	1	HOUSING, R H TRANSAXLE	102	50169	1	WASHER
33	62589	1	BOLT, RIB NECK 5/16-18	103		1	O RING
35	44094	1	WASHER, RUBBER 5/8 OD X .313 ID X .04	123	50405	2	
36	44134	1	BEARING, NEEDLE SC1412				