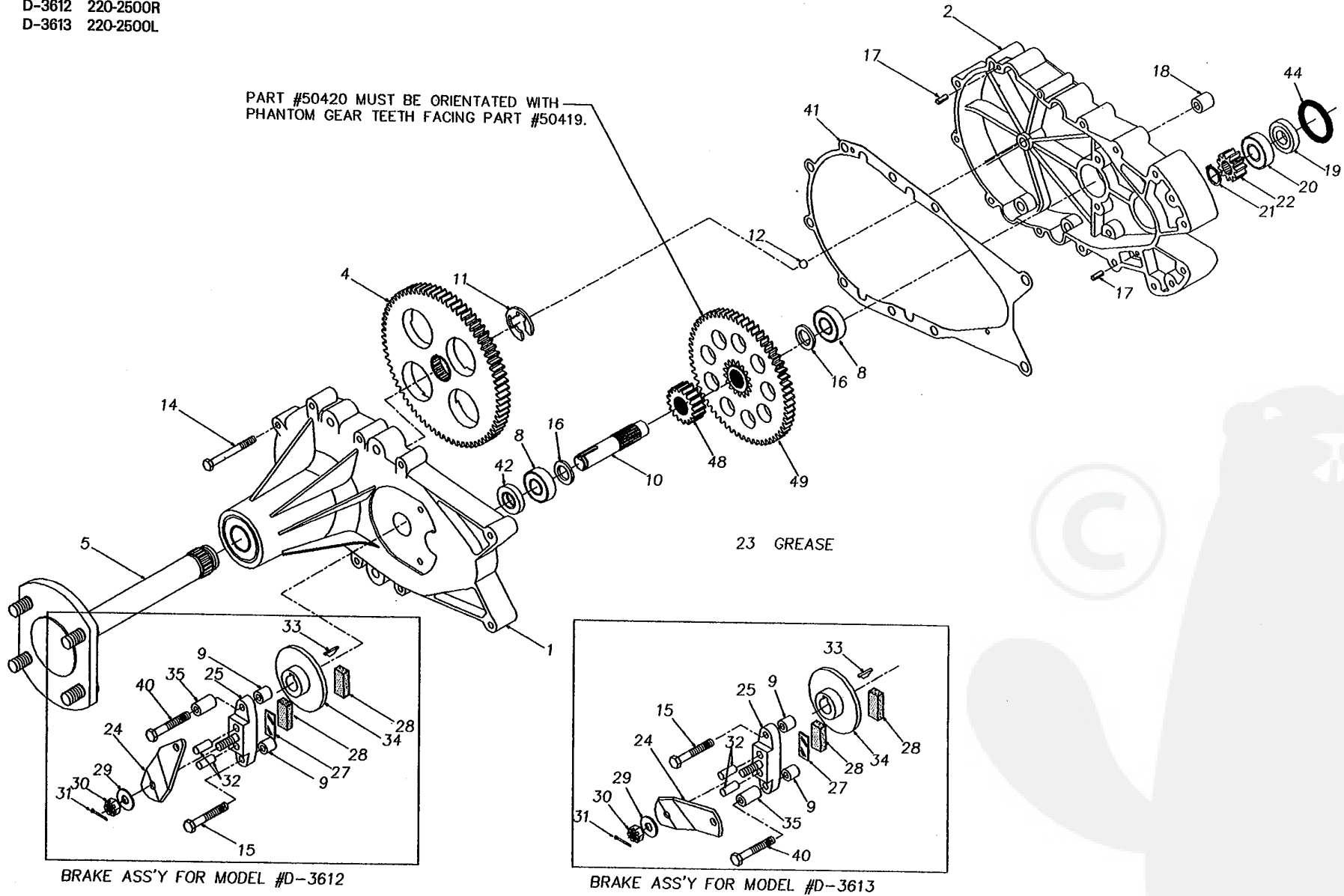


D-3612 220-2500R  
D-3613 220-2500L

PART #50420 MUST BE ORIENTATED WITH  
PHANTOM GEAR TEETH FACING PART #50419.



D-3612 220-2500R

D-3613 220-000L

ITEM #	PART #	QTY	DESCRIPTION
1	62768	1	AXLE CARRIER HOUSING ASSEMBLY
		1	AXLE CARRIER HOUSING
		1	BALL BEARING, 52MM X 25MM X 15MM
		1	FLANGE BEARING
		1	BRAKE PIN
		1	OIL SEAL, 1.25 OD X .625 ID
		1	OIL SEAL, 52MM X 25MM
2	44533	1	HYDRO MOUNT HOUSING
4	44358	1	72 TOOTH FINAL DRIVE GEAR
5	62681	1	AXLE SHAFT ASSEMBLY
		1	AXLE SHAFT
		4	LUG BOLT
8	44147	2	BALL BEARING .62 X 1.38 X .44
9	23770	2	BRAKE SPACER
10	44351	1	BRAKE SHAFT
11	44359	1	E-RING
12	9001214-3700	1	3/8 DIA. BALL
14	44366	8	BOLT, 1/4-20 X 2-1/2
15	44276	1	BOLT, 1/4-20 X 1-1/2
16	44371	2	WASHER
17	44269	2	SPRING PIN
18	23749	2	MOUNTING SPACER
19	44355	1	BEARING SPACER
20	44232	1	BALL BEARING 15MM X 35MM X 11MM
21	44354	1	RETAINING RING
22	44353	1	11 TOOTH INPUT GEAR
23	50416	2	GREASE (10 OZ. TUBE)
24	44094	1	ARM, BRAKE ACTUATOR (RH ASSEMBLY)
-	44613	1	ARM, BRAKE ACTUATOR (LH ASSEMBLY)
25	62589	1	BRAKE YOKE ASSEMBLY
		1	BRAKE YOKE
		1	SQUARE HEAD BOLT
27	44134	1	PLATE, PUCK
28	44132	2	PUCK, BRAKE
29	44130	1	WASHER, 7/16 X 7/8 X .06
30	44142	1	NUT, SLOTTED HEX
31	44101	1	PIN, COTTER
32	44127	2	PIN, BRAKE ACTUATING
33	44143	1	KEY, HI PRO 3/16 X 5/8
34	44090	1	DISC, BRAKE
40	44612	1	BOLT, 1/4-20 X 2-1/2
41	50223	1	HOUSING GASKET
42	50263	1	OIL SEAL, 1.25 X .625
44	50267	1	O-RING
48	50419	1	17 TOOTH GEAR
49	50420	1	60 TOOTH GEAR