

CWT-7410

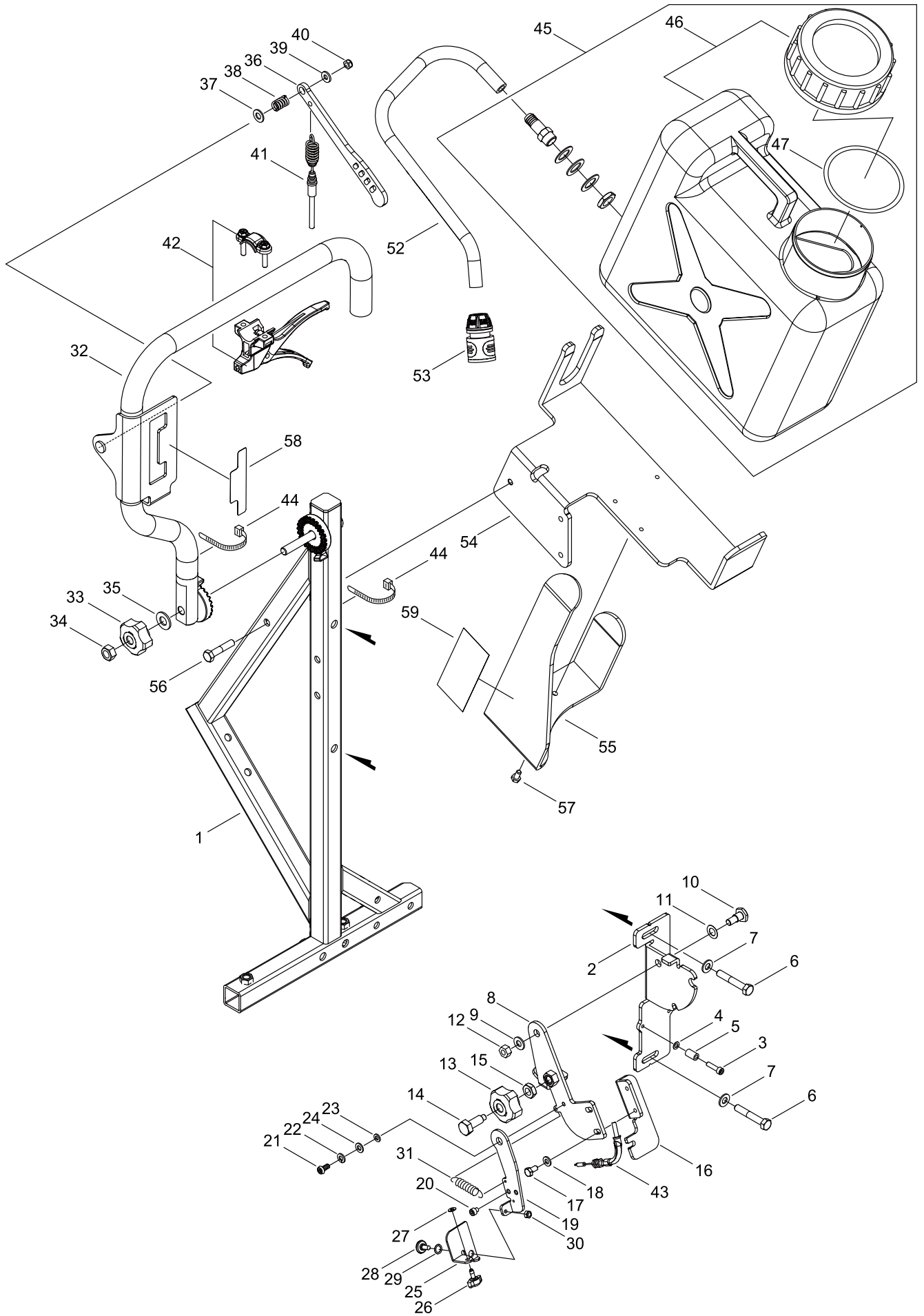
Serial number: 00000000-99999999

Last update date: 06/10/2020

TABLE OF CONTENTS

| | |
|------------------|---|
| TANK, FRAME..... | 1 |
| WHEEL..... | 5 |
| ACCESSORIES..... | 9 |

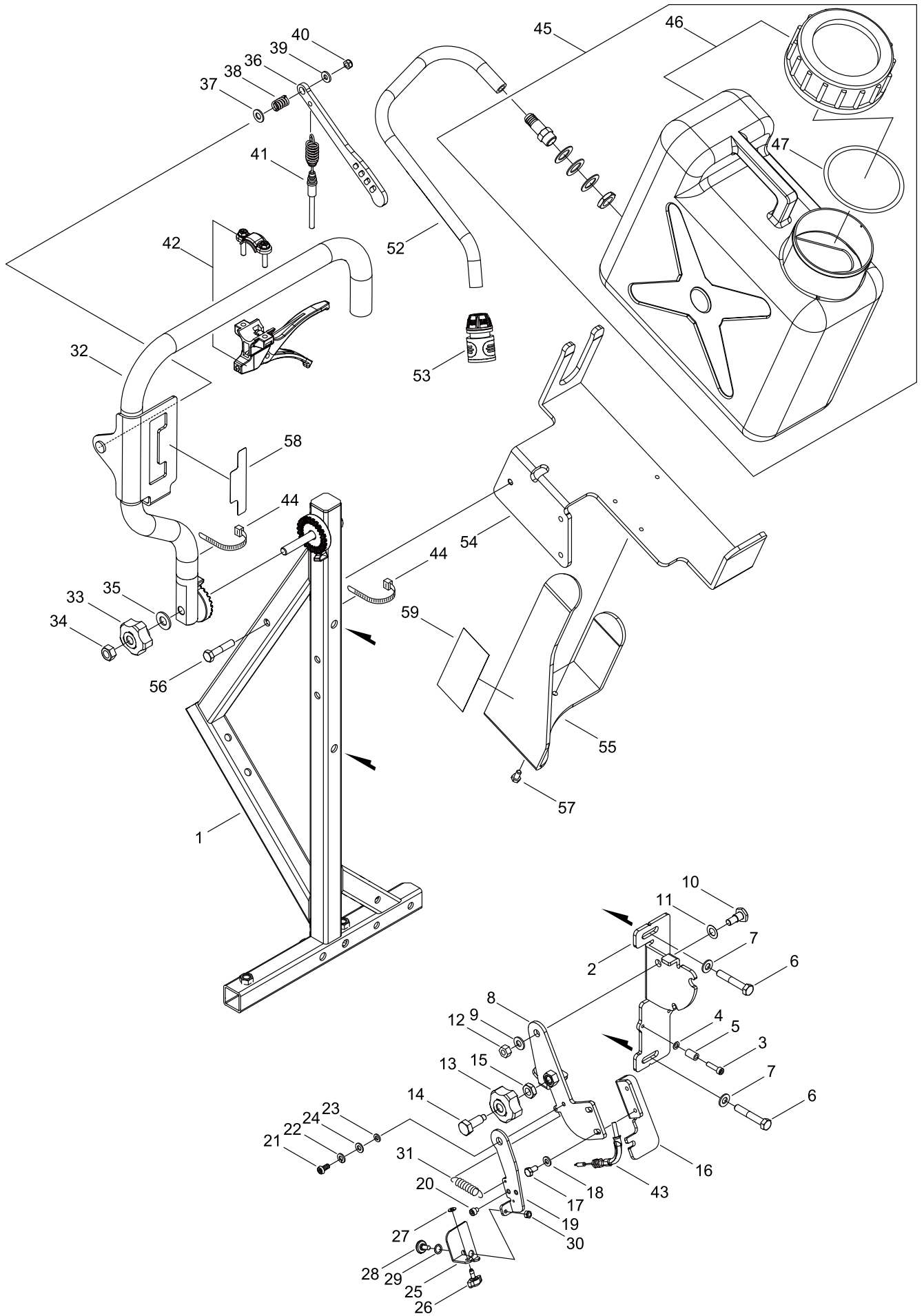
TANK, FRAME



TANK, FRAME

| Key No. | LV (+) | Part No | Description | Qty | Standard |
|---------|--------|--------------|--------------------|-----|---------------|
| 1 | | C619-000790 | BASE,FRAME | 1 | |
| 2 | | C405-000670 | BRACKET,HANDLE | 1 | |
| 3 | | 900105-05020 | BOLT HSH | 2 | 5*20 |
| 4 | | 900600-00005 | WASHER | 2 | 5 |
| 5 | | V353-000370 | PIPE | 2 | |
| 6 | | 900100-08050 | BOLT | 2 | 8*50 |
| 7 | | 900616-00008 | WASHER | 2 | 8 |
| 8 | | C427-000070 | STOPPER, HAMDLE | 1 | |
| 9 | | 175049-03920 | WASHER | 1 | |
| 10 | | A557-000000 | SHAFT,CLUTCH | 1 | |
| 11 | | V346-000000 | WASHER,WAVE | 1 | |
| 12 | | V265-000370 | U NUT | 1 | |
| 13 | | M613-000350 | KNOB | 1 | SK-43 |
| 14 | | V206-000780 | BOLT,10 | 1 | 10*30 |
| 15 | | 900502-00010 | NUT | 1 | 10 |
| 16 | | V152-004370 | PLATE,ANGLE | 1 | |
| 17 | | 900100-06012 | BOLT | 2 | 6*12 |
| 18 | | 900616-00006 | WASHER | 2 | 6 |
| 19 | | C453-000650 | LEVER, THROTTLE | 1 | |
| 20 | | 91100-05004 | BOLT HSH | 1 | 5*4 |
| 21 | | 91142-06012 | BOLT HS, BUTTON | 1 | 6*12 |
| 22 | | 900605-00006 | WASHER, SPRING | 1 | 6 |
| 23 | | V354-000640 | COLLAR,6 | 1 | 10*6.2*L3.3 |
| 24 | | 900616-00006 | WASHER | 1 | 6 |
| 25 | | V152-004380 | PLATE,ANGLE | 1 | |
| 26 | | V299-000570 | KNOB,FASTENER | 1 | |
| 27 | | V322-000070 | WASHER,CIRCULAR 4 | 1 | 4*10*0.8 |
| 28 | | V203-001891 | BOLT,5 | 1 | |
| 29 | | V346-000100 | WAVE WASHER | 1 | |
| 30 | | 900500-00005 | NUT | 1 | 5 |
| 31 | | V451-001640 | SPRING,TENSION | 1 | HS080-035-0.8 |
| 32 | | C080-000140 | HANDLE,ASY | 1 | |
| 33 | | M613-000350 | KNOB | 1 | SK-43 |
| 34 | | 900500-00010 | NUT | 1 | 10 |
| 35 | | 900602-00010 | WASHER | 1 | 10 |
| 36 | | C593-000160 | LEVER, SHIFT | 1 | |
| 37 | | 900616-00008 | WASHER | 1 | 8 |
| 38 | | V450-002450 | SPRING,COMPRESSION | 1 | AP130-020-2.3 |
| 39 | | 145642-06230 | WASHER | 1 | |
| 40 | | V264-000160 | U NUT | 1 | |
| 41 | | V430-005310 | CABLE,BOWDEN | 1 | |
| 42 | | C453-000660 | LEVER, THROTTLE | 1 | E10012600800 |
| 43 | | V430-005320 | CABLE,BOWDEN | 1 | |
| 44 | | V495-002010 | BAND | 2 | |
| 45 | | P100-010120 | TANK ASY | 1 | |
| 46 | + | K200-001310 | TANK,LIQUID | 1 | |

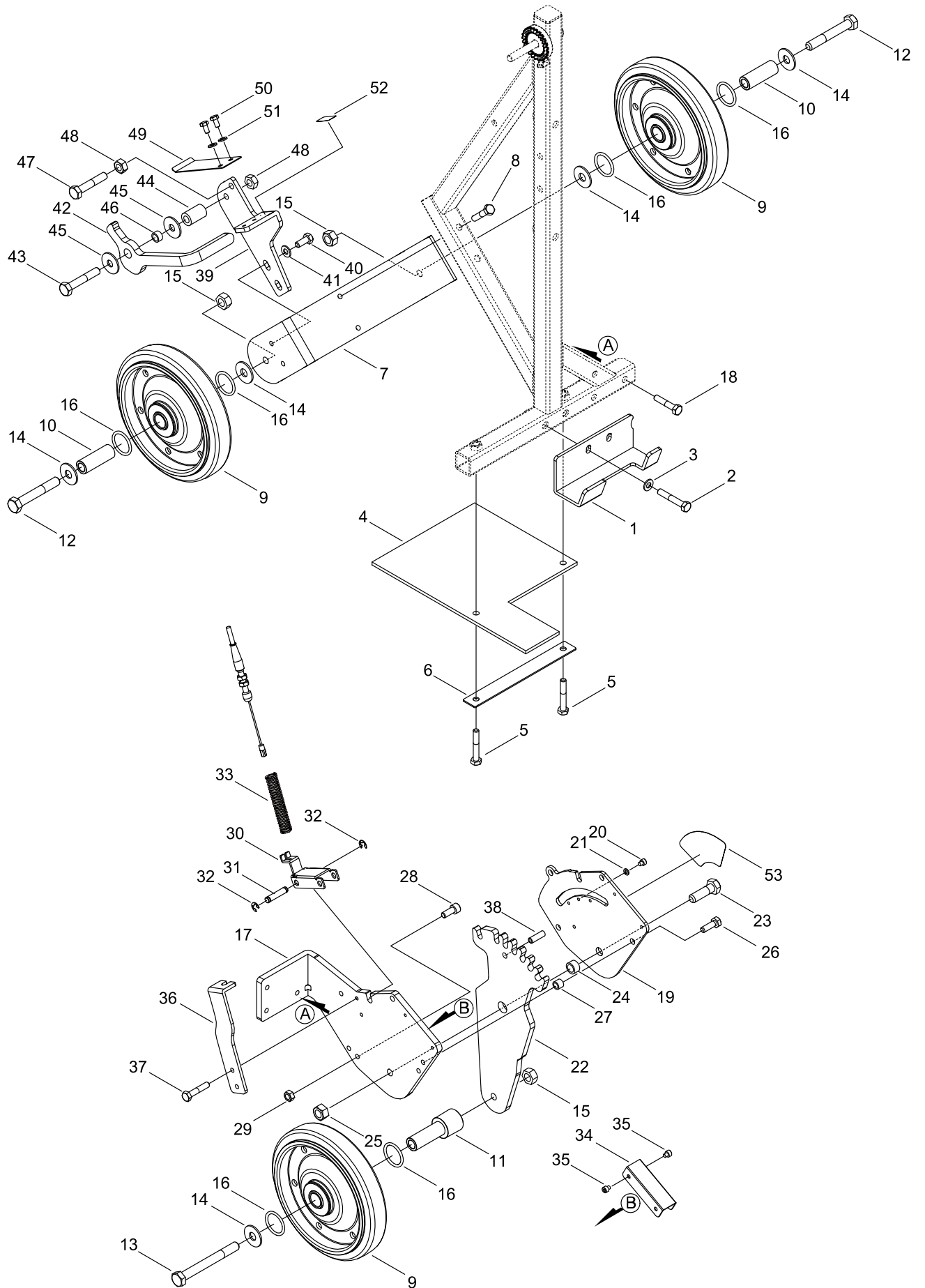
TANK, FRAME



TANK, FRAME

| Key No. | LV (+) | Part No | Description | Qty | Standard |
|---------|--------|--------------|-----------------|-----|----------|
| 47 | + | V106-000250 | GASKET,CIRCULAR | 1 | 113,9,T4 |
| 52 | | K575-000130 | HOSE,12 | 1 | TR-12 |
| 53 | | V700-000151 | COUPLER | 1 | 18213-50 |
| 54 | | C519-007740 | STAY | 1 | |
| 55 | | C519-007750 | STAY | 1 | |
| 56 | | 900100-08040 | BOLT | 3 | 8*40 |
| 57 | | 900100-06012 | BOLT | 3 | 6*12 |
| 58 | | X532-005990 | LABEL,OPERATION | 1 | |
| 59 | | X505-011460 | LABEL,CAUTION | 1 | |

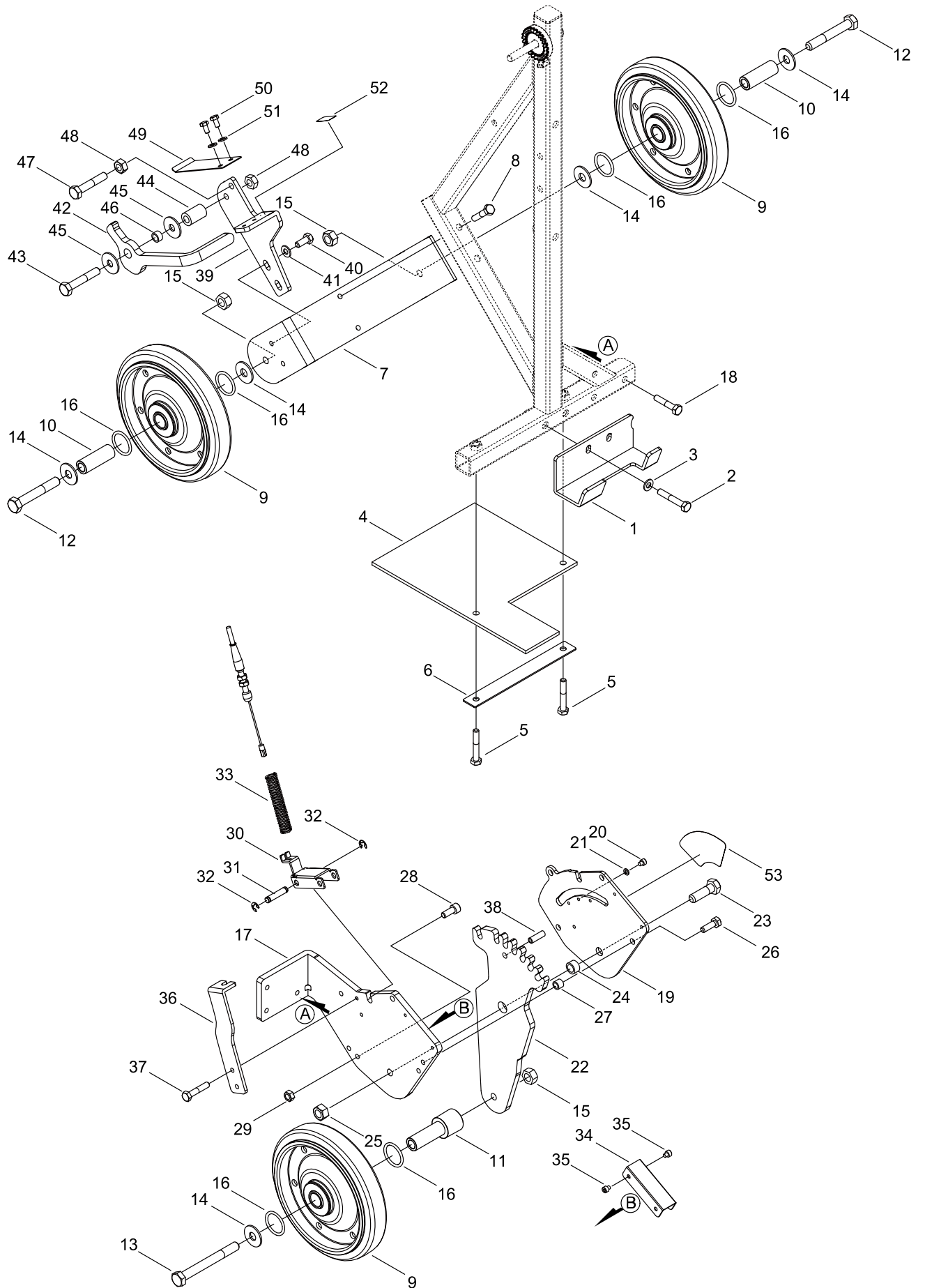
WHEEL



WHEEL

| Key No. | LV (+) | Part No | Description | Qty | Standard |
|---------|--------|--------------|-------------------------------|-----|-----------------|
| 1 | | V152-004360 | PLATE,ANGLE | 1 | |
| 2 | | 900100-08050 | BOLT | 2 | 8*50 |
| 3 | | 900616-00008 | WASHER | 2 | 8 |
| 4 | | A128-000210 | PLATE, DUST | 1 | |
| 5 | | 900100-08050 | BOLT | 2 | 8*50 |
| 6 | | V156-000070 | PLATE,HOLDER | 1 | |
| 7 | | C711-000050 | STAY,WHEEL | 1 | |
| 8 | | 900100-08040 | BOLT | 2 | 8*40 |
| 9 | | C730-000140 | WHEEL | 3 | W-200 |
| 10 | | V357-000460 | COLLAR,12 | 2 | 20.0*12.5*L55.5 |
| 11 | | V357-000470 | COLLAR,12 | 1 | 32*12.5*L85.5 |
| 12 | | 900100-12080 | BOLT | 2 | 12*80 |
| 13 | | 91000-12110 | BOLT | 1 | 12*110 |
| 14 | | V309-000200 | WASHER,CIRCULAR 12 | 5 | 12.5*32*2.3 |
| 15 | | 900500-00012 | NUT | 3 | 12 |
| 16 | | V581-000990 | RING,O | 6 | 29.7*3.5 |
| 17 | | V152-004340 | PLATE,ANGLE | 1 | |
| 18 | | 900100-08040 | BOLT | 3 | 8*40 |
| 19 | | J469-000170 | COVER | 1 | |
| 20 | | 91109-05005 | BOLT HSH | 3 | 5*5 |
| 21 | | 900605-00005 | WASHER, SPRING | 3 | 5 |
| 22 | | C538-000170 | GUIDE, CUTTER | 1 | |
| 23 | | 900100-12040 | BOLT | 1 | 12*40 |
| 24 | | V357-000450 | COLLAR,12 | 1 | 16.7*12.3*L9.5 |
| 25 | | 900500-00012 | NUT | 1 | 12 |
| 26 | | 900100-08025 | BOLT | 3 | 8*25 |
| 27 | | V355-000990 | COLLAR,8 | 3 | 12*8.2*L9.5 |
| 28 | | 900105-08020 | BOLT HSH | 2 | 8*20 |
| 29 | | 900500-00008 | NUT | 2 | 8 |
| 30 | | V150-004850 | PLATE,EYE | 1 | |
| 31 | | C464-000020 | SHAFT, LATCH | 2 | 8*L37.4 |
| 32 | | 92404-07000 | RETAINING RING, EXTERNAL-E | 4 | CE-7 |
| 33 | | V450-002460 | SPRING,COMPRESSION | 1 | WL16-90 |
| 34 | | V150-004840 | PLATE,EYE | 1 | |
| 35 | | 91109-05005 | BOLT HSH | 4 | 5*5 |
| 36 | | V152-004350 | PLATE,ANGLE | 1 | |
| 37 | | 900100-06012 | BOLT | 2 | 6*12 |
| 38 | | 900342-80025 | PIN, SPRING | 1 | 8*25 |
| 39 | | G189-000290 | STAY,HOLDER | 1 | |
| 40 | | 900100-08020 | BOLT | 2 | 8*20 |
| 41 | | 900616-00008 | WASHER | 2 | 8 |
| 42 | | C320-000620 | LEVER, BRAKE | 1 | |
| 43 | | 900100-10060 | BOLT | 1 | 10*60 |
| 44 | | V356-000650 | COLLAR,10 | 1 | 10.3*19*30L |
| 45 | | 900630-00010 | WASHER | 2 | 10 |

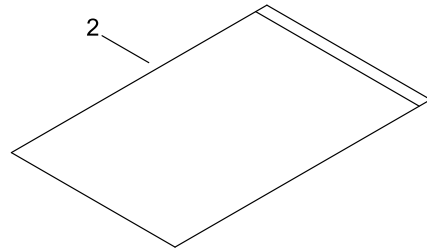
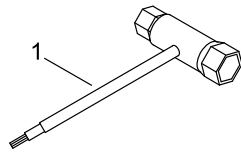
WHEEL



WHEEL

| Key No. | LV (+) | Part No | Description | Qty | Standard |
|---------|--------|--------------|------------------|-----|---------------|
| 46 | | V356-000950 | COLLAR,10 | 1 | 10.3*14*L10.6 |
| 47 | | 91009-10055 | BOLT | 1 | 10*55 |
| 48 | | 900500-00010 | NUT | 2 | 10 |
| 49 | | C331-000020 | PLATE, PARTITION | 1 | |
| 50 | | 900100-06012 | BOLT | 2 | 6*12 |
| 51 | | 900616-00006 | WASHER | 2 | 6 |
| 52 | | X532-006000 | LABEL,OPERATION | 1 | |
| 53 | | X524-007730 | LABEL | 1 | |

ACCESSORIES



ACCESSORIES

| Key No. | LV (+) | Part No | Description | Qty | Standard |
|---------|--------|-------------|-------------|-----|----------|
| 1 | | X602-000410 | TOOL,WRENCH | 1 | 13X19MM |
| 2 | | X705-000220 | TOOL BAG | 1 | |

NUMERICAL PARTS INDEX

| Part No | Part description | Page | Part No | Part description | Page | Part No | Part description | Page |
|--------------|-------------------------------|------|-------------|---------------------|------|-------------|---------------------|------|
| 145642-06230 | WASHER | 2 | C405-000670 | BRACKET,HANDLE | 2 | V430-005320 | CABLE,BOWDEN | 2 |
| 175049-03920 | WASHER | 2 | C427-000070 | STOPPER, HANDLE | 2 | V450-002450 | SPRING, COMPRESSION | 2 |
| 900100-06012 | BOLT | 2 | C453-000650 | LEVER, THROTTLE | 2 | V450-002460 | SPRING, COMPRESSION | 6 |
| 900100-06012 | BOLT | 4 | C453-000660 | LEVER, THROTTLE | 2 | V451-001640 | SPRING, TENSION | 2 |
| 900100-06012 | BOLT | 6 | C464-000020 | SHAFT, LATCH | 6 | V495-002010 | BAND | 2 |
| 900100-06012 | BOLT | 8 | C519-007740 | STAY | 4 | V581-000990 | RING,O | 6 |
| 900100-08020 | BOLT | 6 | C519-007750 | STAY | 4 | V700-000151 | COUPLER | 4 |
| 900100-08025 | BOLT | 6 | C538-000170 | GUIDE, CUTTER | 6 | X505-011460 | LABEL, CAUTION | 4 |
| 900100-08040 | BOLT | 4 | C593-000160 | LEVER, SHIFT | 2 | X524-007730 | LABEL | 8 |
| 900100-08040 | BOLT | 6 | C619-000790 | BASE, FRAME | 2 | X532-005990 | LABEL, OPERATION | 4 |
| 900100-08050 | BOLT | 2 | C711-000050 | STAY, WHEEL | 6 | X532-006000 | LABEL, OPERATION | 8 |
| 900100-08050 | BOLT | 6 | C730-000140 | WHEEL | 6 | X602-000410 | TOOL, WRENCH | 10 |
| 900100-10060 | BOLT | 6 | G189-000290 | STAY, HOLDER | 6 | X705-000220 | TOOL BAG | 10 |
| 900100-12040 | BOLT | 6 | J469-000170 | COVER | 6 | | | |
| 900100-12080 | BOLT | 6 | K200-001310 | TANK, LIQUID | 2 | | | |
| 900105-05020 | BOLT HSH | 2 | K575-000130 | HOSE, 12 | 4 | | | |
| 900105-08020 | BOLT HSH | 6 | M613-000350 | KNOB | 2 | | | |
| 900342-80025 | PIN, SPRING | 6 | P100-010120 | TANK ASY | 2 | | | |
| 900500-00005 | NUT | 2 | V106-000250 | GASKET, CIRCULAR | 4 | | | |
| 900500-00008 | NUT | 6 | V150-004840 | PLATE, EYE | 6 | | | |
| 900500-00010 | NUT | 2 | V150-004850 | PLATE, EYE | 6 | | | |
| 900500-00010 | NUT | 8 | V152-004340 | PLATE, ANGLE | 6 | | | |
| 900500-00012 | NUT | 6 | V152-004350 | PLATE, ANGLE | 6 | | | |
| 900502-00010 | NUT | 2 | V152-004360 | PLATE, ANGLE | 6 | | | |
| 900600-00005 | WASHER | 2 | V152-004370 | PLATE, ANGLE | 2 | | | |
| 900602-00010 | WASHER | 2 | V152-004380 | PLATE, ANGLE | 2 | | | |
| 900605-00005 | WASHER, SPRING | 6 | V156-000070 | PLATE, HOLDER | 6 | | | |
| 900605-00006 | WASHER, SPRING | 2 | V203-001891 | BOLT, 5 | 2 | | | |
| 900616-00006 | WASHER | 2 | V206-000780 | BOLT, 10 | 2 | | | |
| 900616-00006 | WASHER | 8 | V264-000160 | U NUT | 2 | | | |
| 900616-00008 | WASHER | 2 | V265-000370 | U NUT | 2 | | | |
| 900616-00008 | WASHER | 6 | V299-000570 | KNOB, FASTENER | 2 | | | |
| 900630-00010 | WASHER | 6 | V309-000200 | WASHER, CIRCULAR 12 | 6 | | | |
| 91000-12110 | BOLT | 6 | V322-000070 | WASHER, CIRCULAR 4 | 2 | | | |
| 91009-10055 | BOLT | 8 | V346-000000 | WASHER, WAVE | 2 | | | |
| 91100-05004 | BOLT HSH | 2 | V346-000100 | WAVE WASHER | 2 | | | |
| 91109-05005 | BOLT HSH | 6 | V353-000370 | PIPE | 2 | | | |
| 91142-06012 | BOLT HS, BUTTON | 2 | V354-000640 | COLLAR, 6 | 2 | | | |
| 92404-07000 | RETAINING RING, EXTERNAL-E | 6 | V355-000990 | COLLAR, 8 | 6 | | | |
| A128-000210 | PLATE, DUST | 6 | V356-000650 | COLLAR, 10 | 6 | | | |
| A557-000000 | SHAFT, CLUTCH | 2 | V356-000950 | COLLAR, 10 | 8 | | | |
| C080-000140 | HANDLE, ASY | 2 | V357-000450 | COLLAR, 12 | 6 | | | |
| C320-000620 | LEVER, BRAKE | 6 | V357-000460 | COLLAR, 12 | 6 | | | |
| C331-000020 | PLATE, PARTITION | 8 | V357-000470 | COLLAR, 12 | 6 | | | |
| | | | V430-005310 | CABLE, BOWDEN | 2 | | | |