



PARTS CATALOG

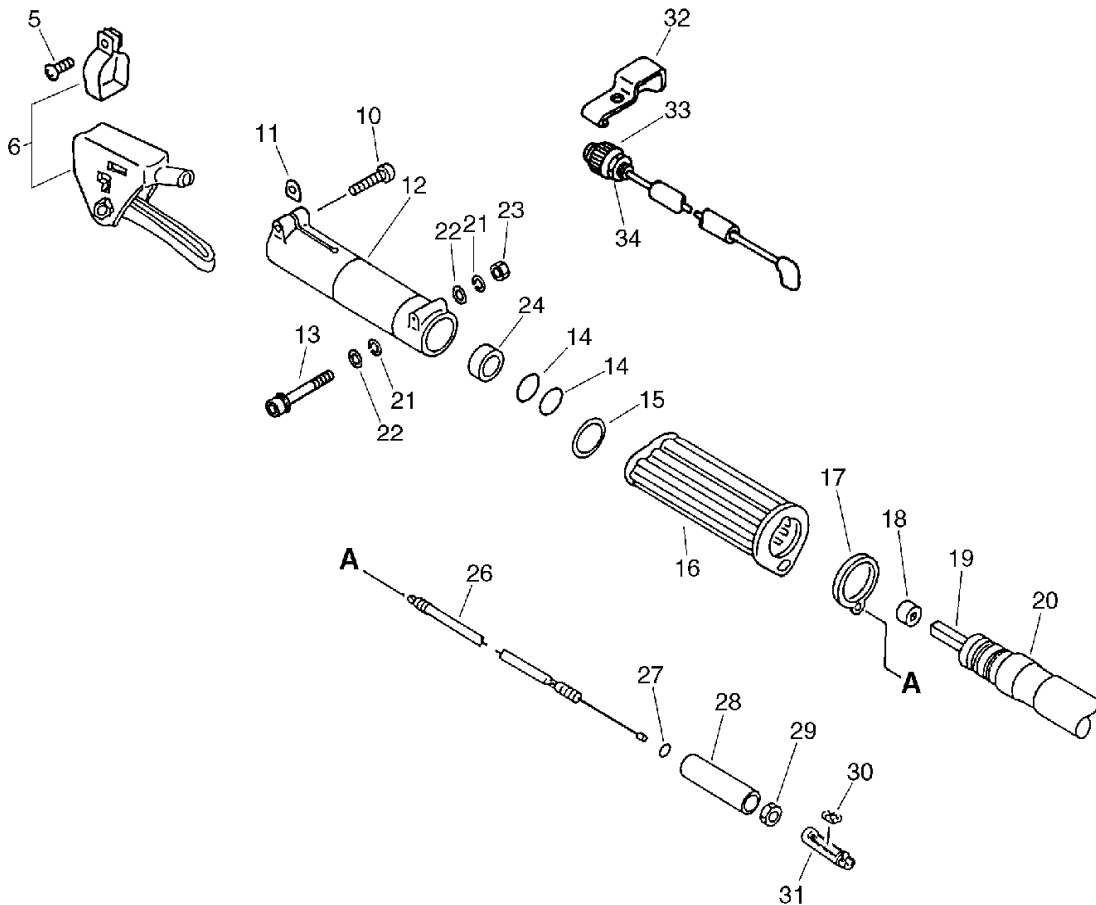
TRIMMER / BRUSHCUTTER ACCESSORY

RMVAM-251

RMVAM-251

1. Throttle

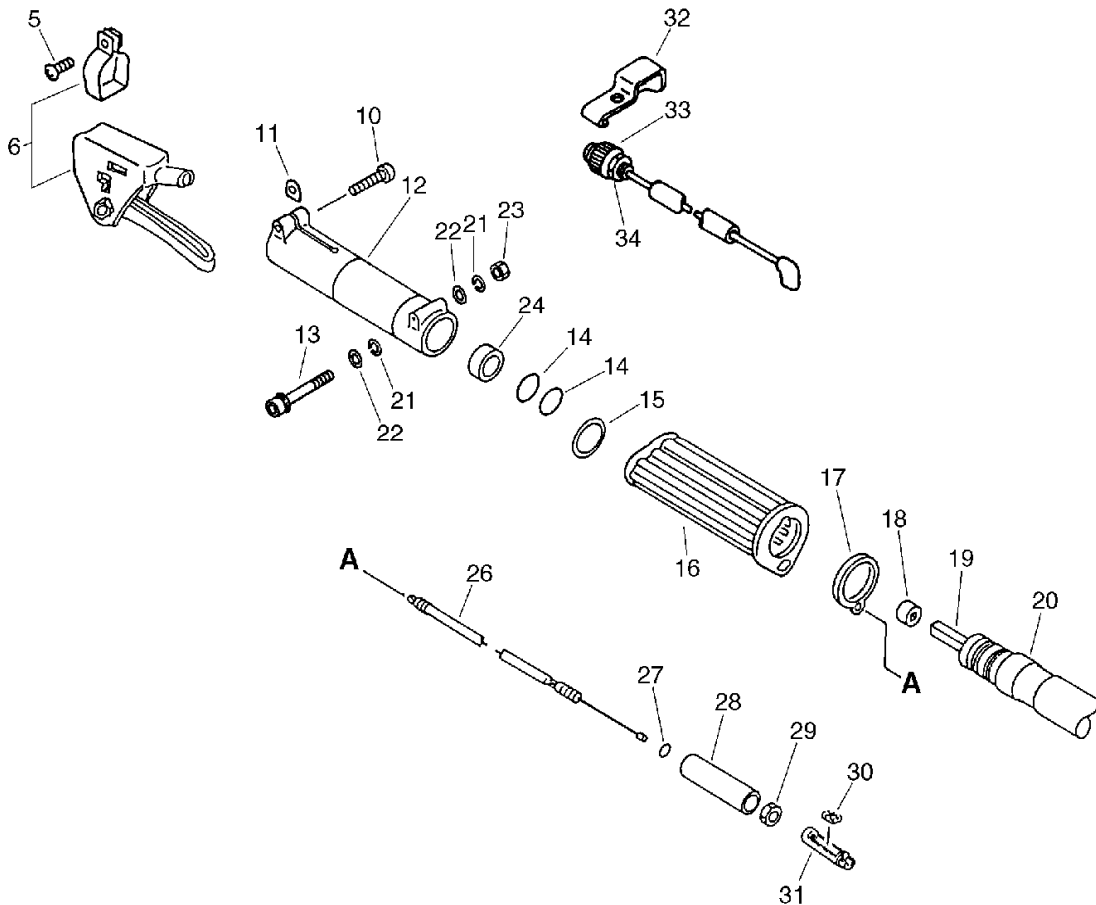
No.1



KEY	LV	PART NUMBER	Q'TY	DESCRIPTION	REMARKS	NOTE1	NOTE2
5		900242-05025	1	SCREW 5*25	5*25		
6		178000-27630	1	CONTROL, THROTTLE			
10		900142-05028	1	BOLT 5*28 (W/W,SW)	5*28	Sus. by 900162-06030	
10		900162-06030	1	BOLT, H.S. 6*30	6*30W, SW		
11		610239-04130	1	WASHER, SHIM			
12		610248-29931	1	CONNECTOR		Sr/Nr 002350 and before	
12		P021-002631	1	CONNECTOR		Sr/Nr 002351 and after	
13		610257-28630	1	BOLT 5		Sr/Nr 002350 and before	
13		V204-000010	1	BOLT,6		Sr/Nr 002351 and after	
14		900720-00018	4	O-RING 18	P-18		
15		610511-27630	1	GASKET			
16		610249-27630	1	GRIP		Sus. by C412-000031	
16		C412-000031	1	GRIP,HANDLE			
17		178112-07130	1	GUIDE, THROTTLE WIRE			
18		610020-07131	1	ADAPTER, FLX. SHAFT			
19		610013-28630	1	SHAFT, FLEXIBLE			
20		610209-28631	1	COVER, FLEX. SHAFT	1100L	Sr/Nr 002350 and before	
20		C508-000010	1	COVER,FLEX SHAFT		Sr/Nr 002351 and after	

1. Throttle

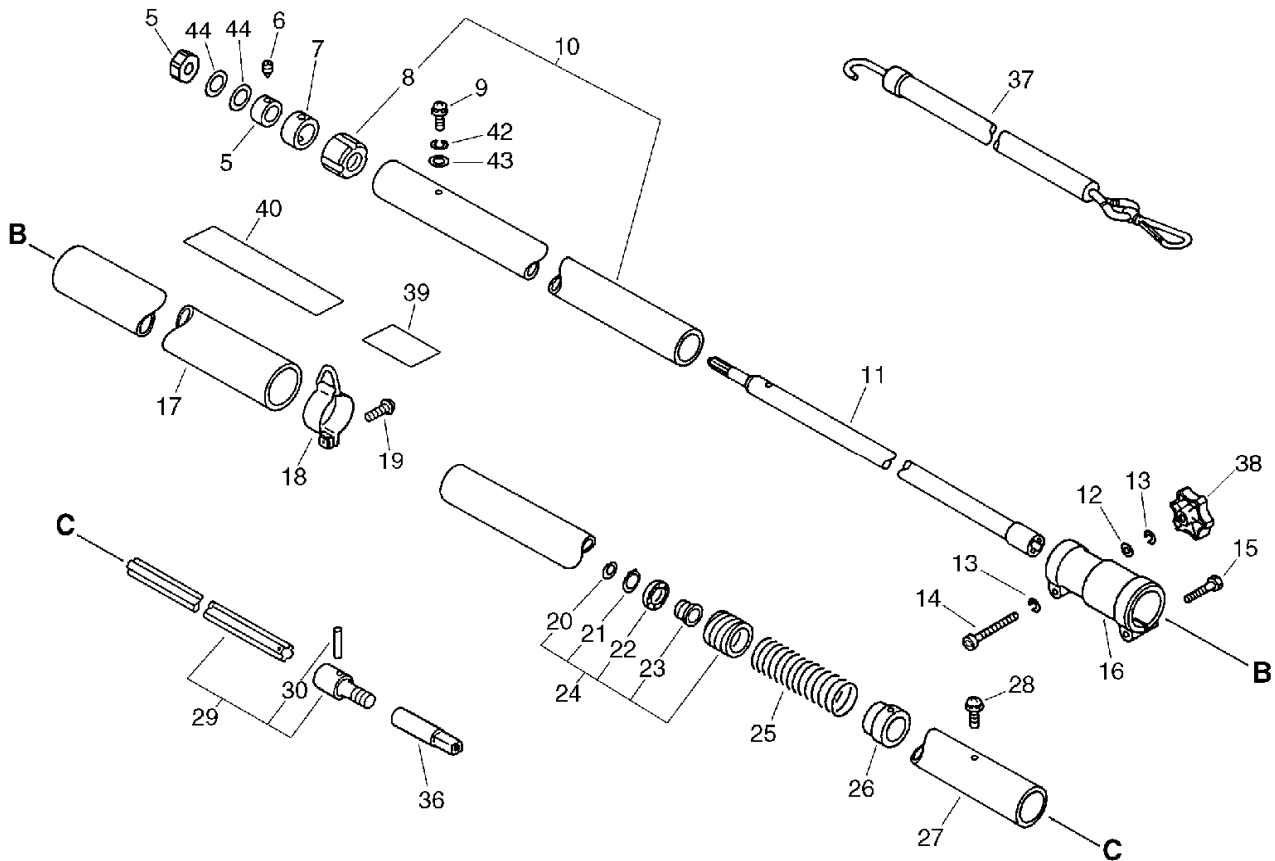
No.1



KEY	LV	PART NUMBER	Q'TY	DESCRIPTION	REMARKS	NOTE1	NOTE2
21		900605-00005	1	WASHER, SPRING 5	5	Sr/Nr 002350 and before	
21		900605-00006	2	WASHER, SPRING 6	6	Sr/Nr 002351 and after	
22		900600-00005	1	WASHER 5	5	Sr/Nr 002350 and before	
22		900617-00006	2	WASHER 6	6	Sr/Nr 002351 and after	
23		900500-00006	1	NUT 6	6	Sr/Nr 002351 and after	
24		V541-000020	1	SEAL		Sr/Nr 002351 and after	
26		178001-28630	1	WIRE, THROTTLE			
27		178133-22330	1	RING			
28		178128-05630	1	SLEEVE			
29		178021-05530	1	LOCKNUT			
30		178049-06630	1	CONNECTOR			
31		178114-05630	1	CONNECTOR, THR. WIRE			
32		163810-27630	1	BRACKET, SWITCH			
33		166101-06630	1	SWITCH			
34		900503-00008	1	NUT	3N8*P1.0		

2. Main Pipe

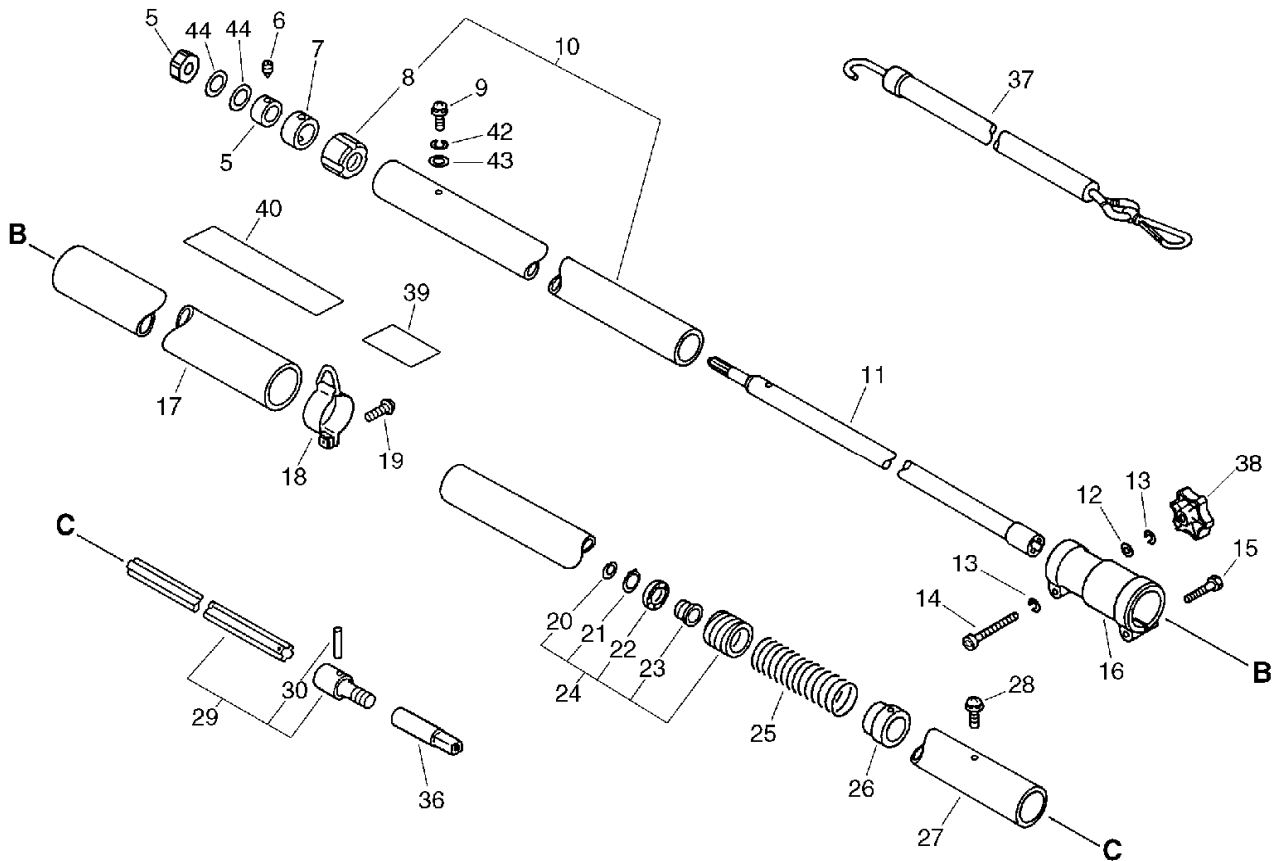
No.2



KEY	LV	PART NUMBER	Q'TY	DESCRIPTION	REMARKS	NOTE1	NOTE2
5		610026-27630	1	STOPPER (B)		Sr/Nr 002350 and before	
5		V265-000001	1	NUT,8		Sr/Nr 002351 and after	
6		900170-05014	1	BOLT, H.S. 5*14	5*14	Sus. by 91138-05014	
6		91138-05014	1	SCREW SET	5*14	Sr/Nr 002350 and before	
7		610225-27630	1	STOPPER (A)		Sr/Nr 002350 and before	
7		V357-000020	1	COLLAR,12		Sr/Nr 002351 and after	
9		900242-05008	2	SCREW 5*8	5*8	Sus. by 900105-05008	
9		900105-05008	2	BOLT, H.S. 5*8	5*8		
10		610206-29930	1	HOUSING ASSY D.SFT			
8	+	610105-27630	3	COLLAR			
11		610007-27630	1	SHAFT, OPERATION		Sus. by 610007-27631	
11		610007-27631	1	SHAFT, DRIVE		Sr/Nr 002350 and before	
11		C504-000040	1	SHAFT,DRIVE		Sr/Nr 002351 and after	
12		130031-10230	1	WASHER		Sus. by 900600-00005	
12		900600-00005	1	WASHER 5	5		

2. Main Pipe

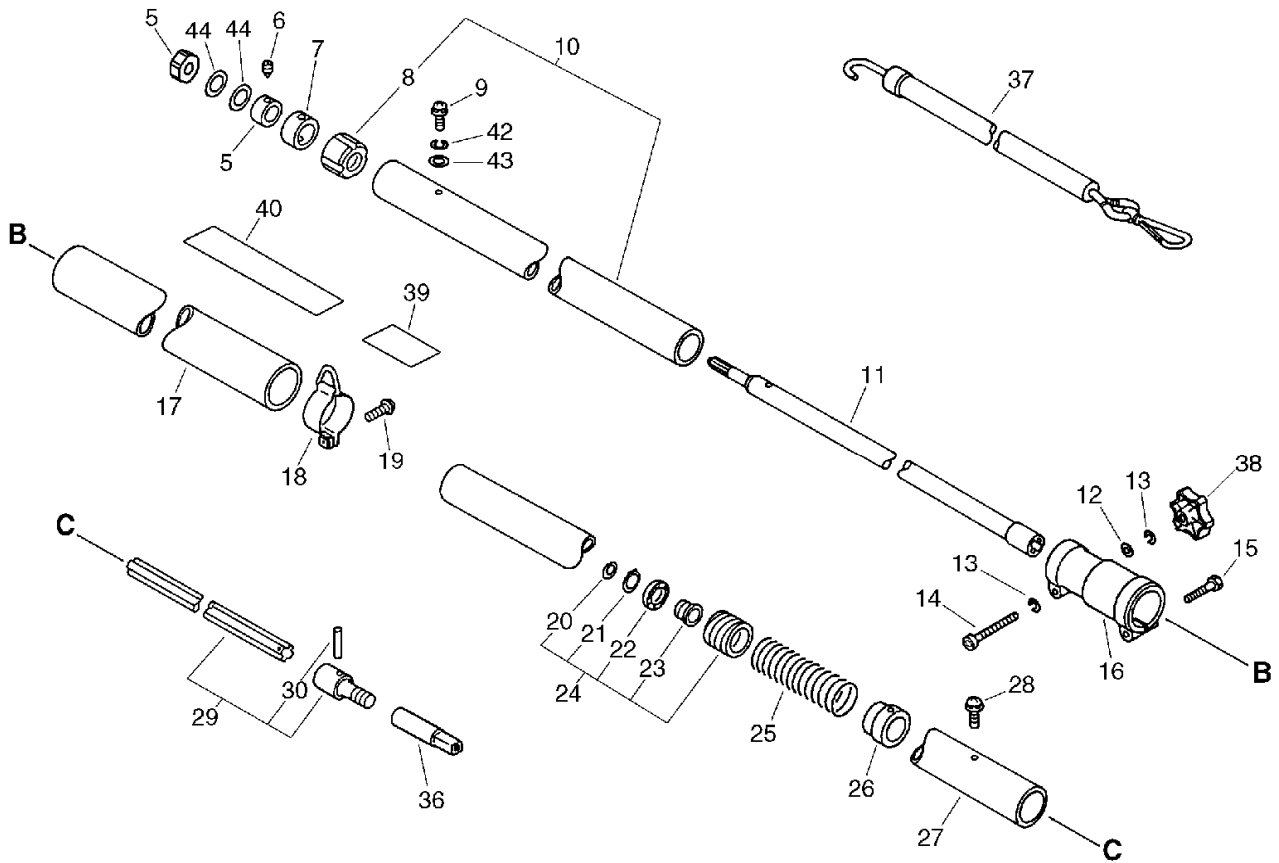
No.2



KEY	LV	PART NUMBER	Q'TY	DESCRIPTION	REMARKS	NOTE1	NOTE2
13		900605-00005	1	WASHER, SPRING 5	5		Sr/Nr 002350 and before
13		900605-00005	2	WASHER, SPRING 5	5		Sr/Nr 002351 and after
14		900105-05040	1	BOLT, H.S. 5*40	5*40		
15		900162-05025	1	BOLT, H.S. 5*25	5*25 W,SW		
16		610269-27630	1	SPACER			
17		610271-27630	1	GRIP			
18		301200-27630	1	HOOK ASSY			
19		900242-05014	1	SCREW 5*14	5*14		
24		610106-27630	1	HOUSING ASSY, OPE			
20	+	900706-00012	1	CIRCLIP 12	WR-12		
21	+	900707-00021	1	CIRCLIP BR-21	BR-21		
22	+	900904-06801	1	BEARING, BALL 6801ZZ	6801ZZ		
23	+	610117-27630	1	SPACER			
25		610120-27630	1	SPRING			
26		610115-27630	1	SPACER			
27		610258-27630	1	SWIVEL, D.S.HOUS.(SL			
28		900242-04008	1	SCREW	4*8		
29		610006-27630	1	SHAFT, DRIVING			
30	+	900340-30016	1	PIN, SPRING 3*16	3*16		Sus. by 900342-30016
30	+	900342-30016	1	PIN, SPRING 3*16	3*16		
36		610012-07132	1	CONNECTOR, D. SHAFT			
37		300500-07131	1	ROPE, ELASTIC			

2. Main Pipe

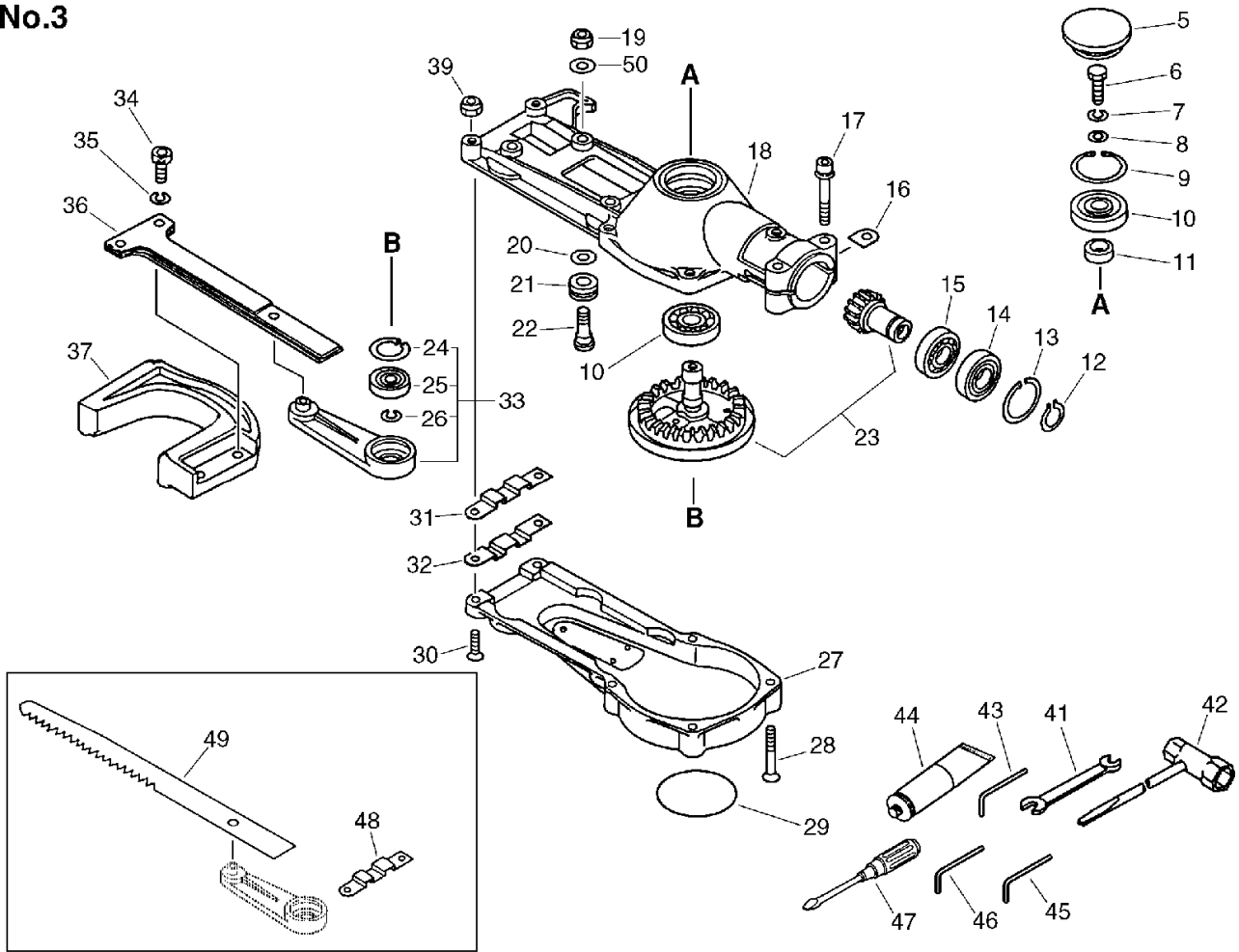
No.2



KEY	LV	PART NUMBER	Q'TY	DESCRIPTION	REMARKS	NOTE1	NOTE2
38		352325-27630	1	KNOB		Sus. by V299-000100	
38		V299-000100	1	KNOB,FASTENER			
39		890019-07130	1	LABEL, CAUTION		Sus. by 890160-42230	
39		890160-42230	1	LABEL, CAUTION			
40		890617-07660	1	LABEL, CAUTION			
42		900605-00005	2	WASHER, SPRING 5	5		
43		900602-00005	2	WASHER 5	5.3*10*1		
44		V310-000010	2	WASHER,CIRCULAR 14			

3. Gear Case, Hook, Cutter, Tools

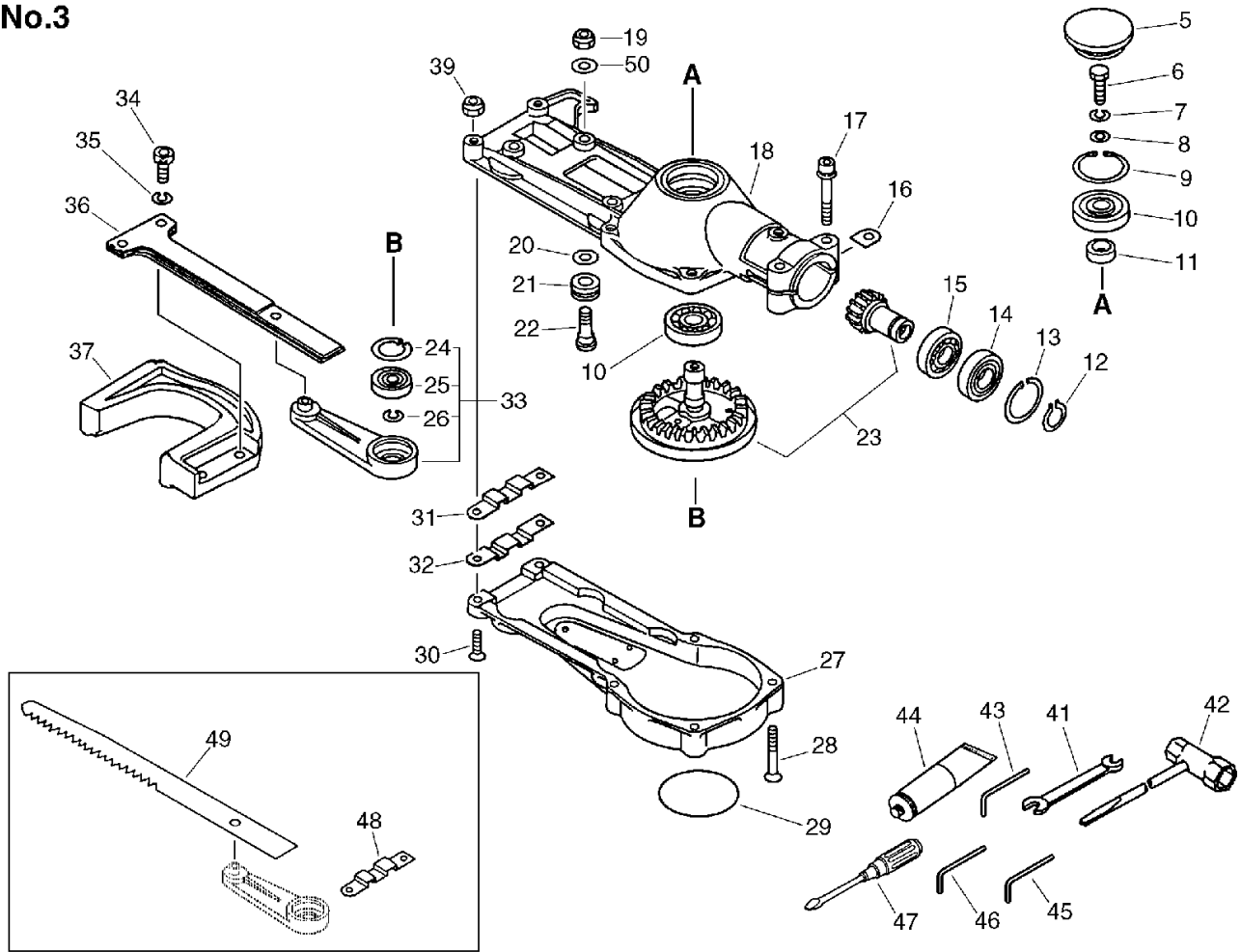
No.3



KEY	LV	PART NUMBER	Q'TY	DESCRIPTION	REMARKS	NOTE1	NOTE2
		610402-27730	1	HOUSING ASSY, GEAR			
5	+	610431-27630	1	PLUG			
6	+	900100-05016	1	BOLT 5*16	5*16		
7	+	900605-00005	1	WASHER, SPRING 5	5		
8	+	177214-02830	1	WASHER	5.2*16*1.0T		
9	+	900702-00026	1	CIRCLIP 26	CR-26		
10	+	900803-06000	2	BEARING,BALL BB6000Z	6000Z		
11	+	610315-27630	1	SPACER,DRIVEN SHAFT			
12	+	900706-00012	1	CIRCLIP 12	WR-12		
13	+	900702-00024	1	CIRCLIP 24	CR-24		
14	+	900858-06901	1	BEARING,BALL BB6901Z	BB6901Z		
15	+	900855-06901	1	BEARING, BALL 6901	6901		
16	+	610239-04130	2	WASHER, SHIM			
17	+	900162-05028	2	BOLT, H.S. 5*28	5*28 W,SW		
18	+	610407-27630	1	CASE, GEAR BS			
19	+	900560-00006	4	NUT, LOCK	6		
20	+	699118-27730	8	WASHER			
21	+	699112-27630	4	BAR, FRAME			
22	+	699113-27630	4	BAR, FRAME			
23	+	610300-27730	1	GEAR SET			
33	+	610302-27630	1	CON-ROD ASSY			
24	++	900702-00019	1	CIRCLIP 19	CR-19		
25	++	900804-00607	1	BEARING, BALL 607	607ZZ		
26	++	900701-00007	1	CIRCLIP 7	CS-7		
27	+	610409-27630	1	COVER, GEAR HOUSING			
28	+	900175-05030	4	BOLT, H.S. 5*30	5*30		

3. Gear Case, Hook, Cutter, Tools

No.3



KEY	LV	PART NUMBER	Q'TY	DESCRIPTION	REMARKS	NOTE1	NOTE2
29	+	890053-00462	1	LABEL, KIORITZ		Sus. by 890053-56330	
29	+	890053-56330	1	LABEL, KIORITZ 56.5MM	56.5		
30	+	900175-05025	2	BOLT, H.S. 5*25	5*25		
31	+	699110-27630	1	BAR, FRAME			
32	+	610848-27630	1	BAR, FRAME			
34		900105-06014	2	BOLT, H.S. 6*14	6*14		
35		900605-00006	2	WASHER, SPRING 6	6		
36		610805-27631	1	BAR, OPERATION			
37		610804-27630	1	BAR, OPERATION			
39		900560-00005	2	NUT, LOCK 5	5		
41		895112-00330	1	SPANNER 8*10			
42		895410-02830	1	WRENCH, W/S. DRIVER			
43		895612-03430	1	L-WRENCH (3MM)			
44		899513-42930	1	GREASE, TUBE (50G)		Sus. by X695-000020	
44		X695-000020	1	GREASE, TUBE			
45		895610-00130	1	L-WRENCH (4MM)			
46		895611-00330	1	L-WRENCH (5MM)			
47		895710-00430	1	DRIVER, SCREW			
48		699110-27630	1	BAR, FRAME			
49		697010-27630	1	CUTTER (SAW)			
50		900600-00006	4	WASHER 6	6		

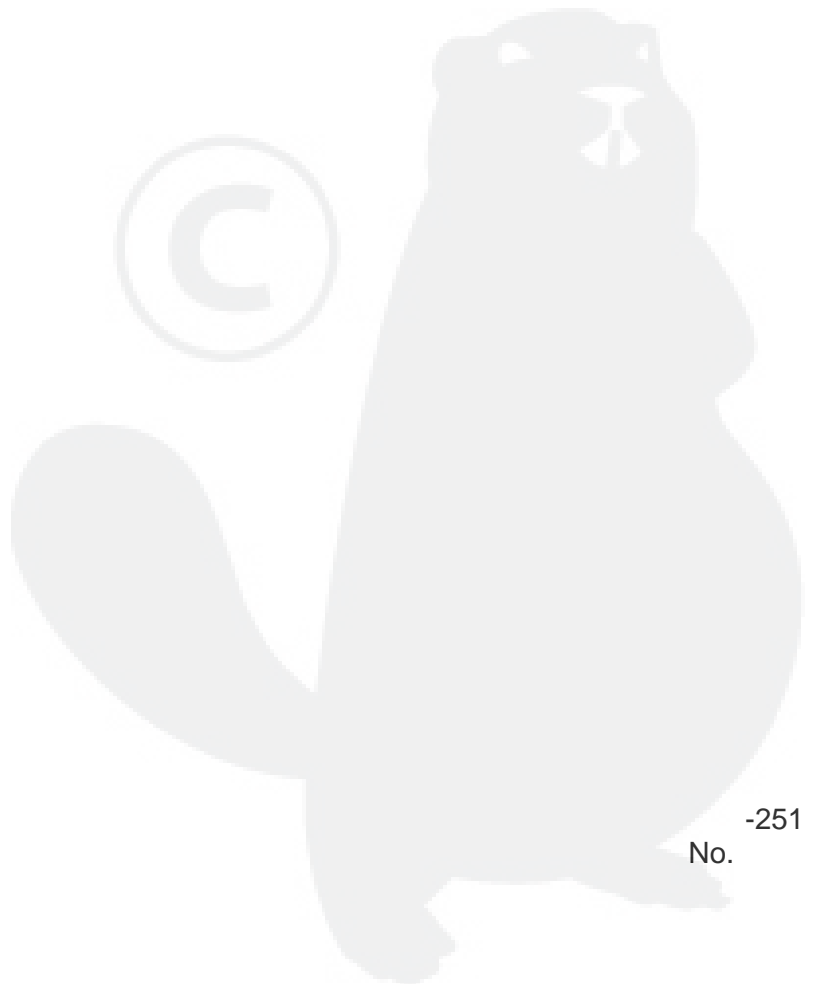
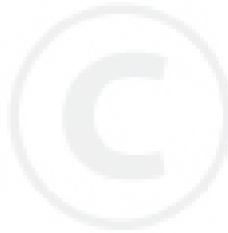
Index

Patrs Number	Key No.	Patrs Number	Key No.	Patrs Number	Key No.
130031-10230	2 - 12	697010-27630	3 - 49	900605-00006	3 - 35
163810-27630	1 - 32	699110-27630	3 - 31	900617-00006	1 - 22
166101-06630	1 - 33	699110-27630	3 - 48	900701-00007	3 - 26
177214-02830	3 - 8	699112-27630	3 - 21	900702-00019	3 - 24
178000-27630	1 - 6	699113-27630	3 - 22	900702-00024	3 - 13
178001-28630	1 - 26	699118-27730	3 - 20	900702-00026	3 - 9
178021-05530	1 - 29	890019-07130	2 - 39	900706-00012	2 - 20
178049-06630	1 - 30	890053-00462	3 - 29	900706-00012	3 - 12
178112-07130	1 - 17	890053-56330	3 - 29	900707-00021	2 - 21
178114-05630	1 - 31	890160-42230	2 - 39	900720-00018	1 - 14
178128-05630	1 - 28	890617-07660	2 - 40	900803-06000	3 - 10
178133-22330	1 - 27	895112-00330	3 - 41	900804-00607	3 - 25
300500-07131	2 - 37	895410-02830	3 - 42	900855-06901	3 - 15
301200-27630	2 - 18	895610-00130	3 - 45	900858-06901	3 - 14
352325-27630	2 - 38	895611-00330	3 - 46	900904-06801	2 - 22
610006-27630	2 - 29	895612-03430	3 - 43	91138-05014	2 - 6
610007-27630	2 - 11	895710-00430	3 - 47	C412-000031	1 - 16
610007-27631	2 - 11	899513-42930	3 - 44	C504-000040	2 - 11
610012-07132	2 - 36	900100-05016	3 - 6	C508-000010	1 - 20
610013-28630	1 - 19	900105-05008	2 - 9	P021-002631	1 - 12
610020-07131	1 - 18	900105-05040	2 - 14	V204-000010	1 - 13
610026-27630	2 - 5	900105-06014	3 - 34	V265-000001	2 - 5
610105-27630	2 - 8	900142-05028	1 - 10	V299-000100	2 - 38
610106-27630	2 - 24	900162-05025	2 - 15	V310-000010	2 - 44
610115-27630	2 - 26	900162-05028	3 - 17	V357-000020	2 - 7
610117-27630	2 - 23	900162-06030	1 - 10	V541-000020	1 - 24
610120-27630	2 - 25	900170-05014	2 - 6	X695-000020	3 - 44
610206-29930	2 - 10	900175-05025	3 - 30		
610209-28631	1 - 20	900175-05030	3 - 28		
610225-27630	2 - 7	900242-04008	2 - 28		
610239-04130	1 - 11	900242-05008	2 - 9		
610239-04130	3 - 16	900242-05014	2 - 19		
610248-29931	1 - 12	900242-05025	1 - 5		
610249-27630	1 - 16	900340-30016	2 - 30		
610257-28630	1 - 13	900342-30016	2 - 30		
610258-27630	2 - 27	900500-00006	1 - 23		
610269-27630	2 - 16	900503-00008	1 - 34		
610271-27630	2 - 17	900560-00005	3 - 39		
610300-27730	3 - 23	900560-00006	3 - 19		
610302-27630	3 - 33	900600-00005	1 - 22		
610315-27630	3 - 11	900600-00005	2 - 12		
610402-27730	3 -	900600-00006	3 - 50		
610407-27630	3 - 18	900602-00005	2 - 43		
610409-27630	3 - 27	900605-00005	1 - 21		
610431-27630	3 - 5	900605-00005	2 - 13		
610511-27630	1 - 15	900605-00005	2 - 13		
610804-27630	3 - 37	900605-00005	2 - 42		
610805-27631	3 - 36	900605-00005	3 - 7		
610848-27630	3 - 32	900605-00006	1 - 21		

YAMABIKO CORPORATION

7-2 SUEHIROCHO 1-CHOME, OHME, TOKYO 198-8760, JAPAN
PHONE: 81-428-32-6118. FAX: 81-428-32-6145.

ECHO®



-251
No.