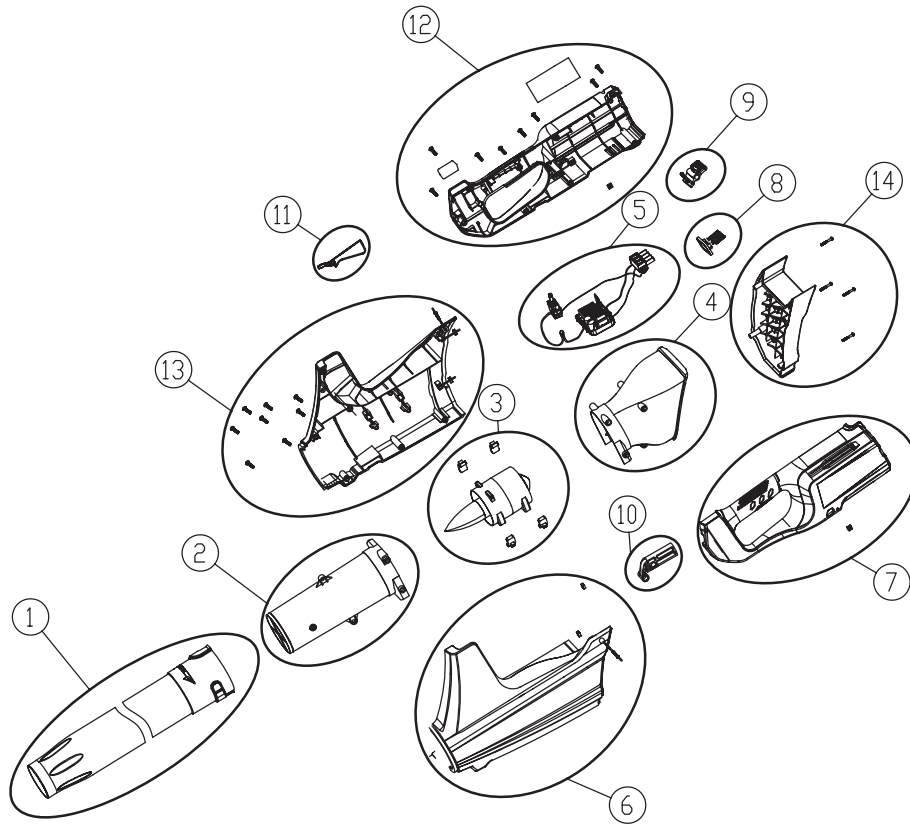




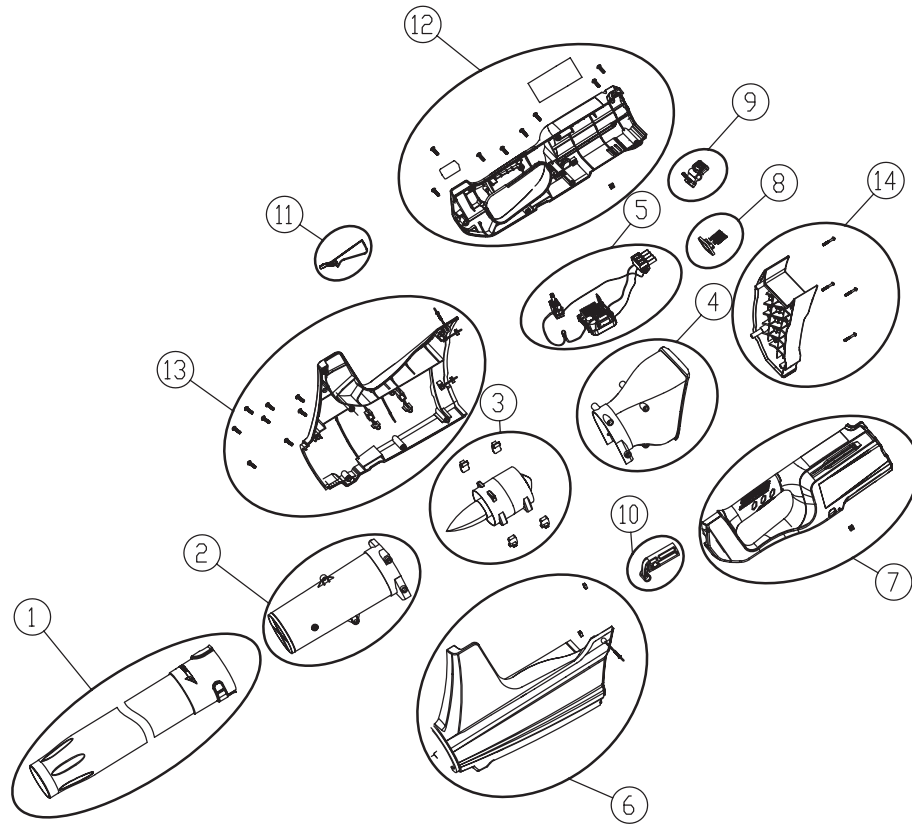
# Blower 82B900 2400086



POSITION	PNC	DESCRIPTION	QTY	UOM
1	RA34103811B	Tube assembly	1	set
1-1		Tube	1	pcs
2	RA34104811B	Connecting tube assembly	1	set
2-1		Connecting tube	1	pcs
3	RA361001816B	Motor assembly	1	set
3-1		4040 brushless axial blower motor	1	pcs
3-2		Motor cushioning	4	pcs
4	RA34105811	Air inlet tube assembly	1	set
4-1		Air inlet tube	1	pcs
5	RA362011816B	PCB assembly	1	set
5-1		Speed switch	1	pcs
5-2		Heat shrinkable tube,15cm	15	cm
5-3		Insert	1	pcs
5-4		Pcb	1	pcs
5-5		Terminal	1	pcs
6	RA34101815H	Left Chassis assembly	1	set
6-1		Left chassis	1	pcs
6-2		Square nut	2	pcs
6-3		Screw	1	pcs
7	RA34112815H	Left handle assembly	1	set
7-1		Left handle	1	pcs
7-2		Square nut	1	pcs
8	RA33301815	Spring base assembly	1	set
8-1		Battery bounce spring	2	pcs
8-2		Spring base	1	pcs
9	RA34110811M	Battery release button assembly	1	set
9-1		Release button	1	pcs
9-2		Reset spring	1	pcs
10	RA34115811	Handle connector assembly	1	set
10-1		Handle connector	1	pcs
11	RA34115815H	Switch trigger assembly	1	set
11-1		Switch trigger	1	pcs



# Blower 82B900 2400086



POSITION	PNC	DESCRIPTION	QTY	UOM
12	RA34113815H	Right handle assembly	1	set
12-1		Right handle	1	pcs
12-2		Square nut	1	pcs
12-3		Screw ST4.2X30-F	1	pcs
12-4		Screw ST4X16-F	7	pcs
13	RA34102815H	Right Chassis assembly	1	set
13-1		Right chassis	1	pcs
13-2		Square nut	2	pcs
13-3		Screw	1	pcs
13-4		Screw ST4.0X25-F	1	pcs
13-5		Screw ST4.0X20-F	6	pcs
14	RA34111811H	Inlet guard assembly	1	set
14-1		Inlet guard	1	pcs
14-2		Screw m4x35	4	pcs

