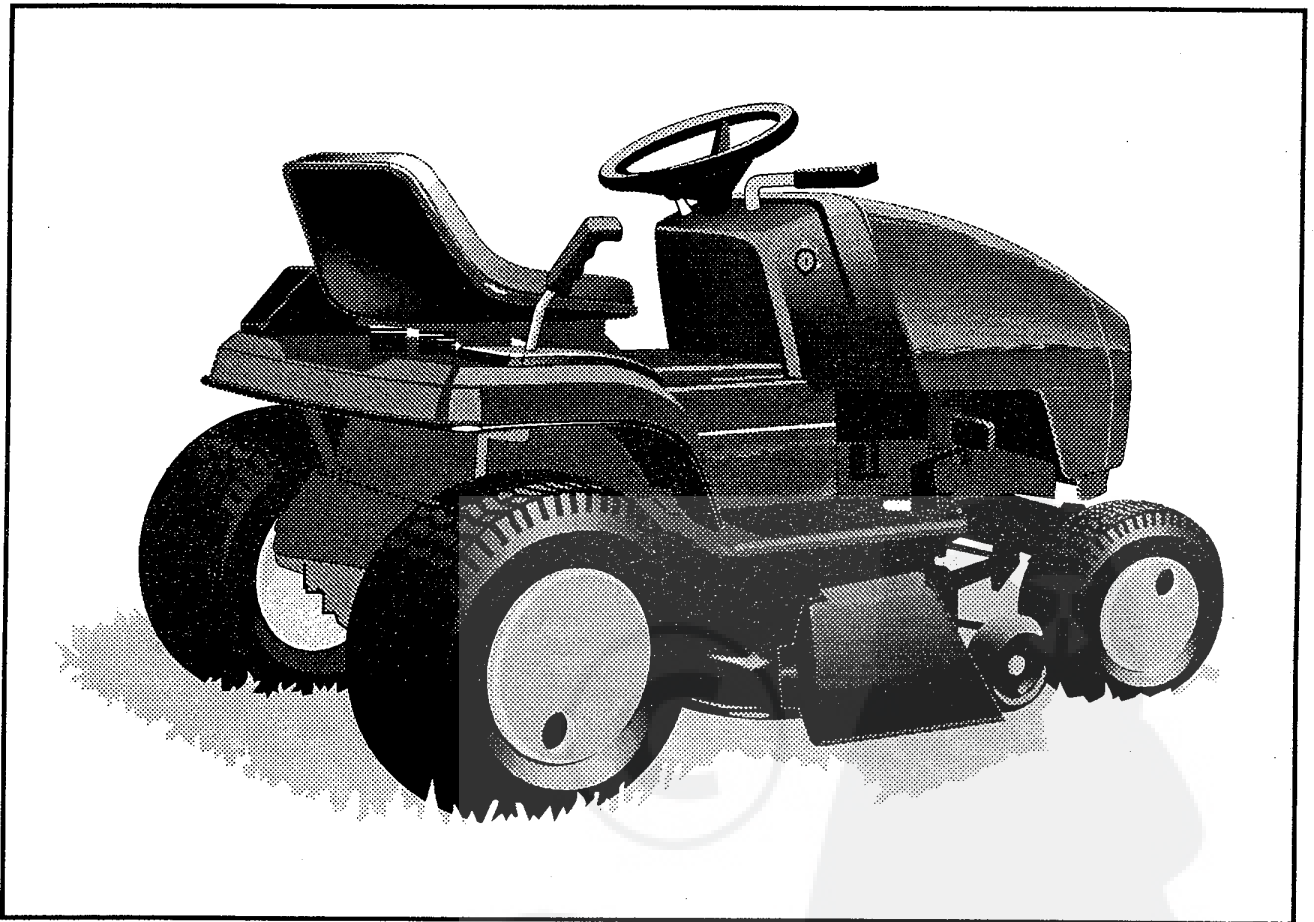


T13/102

Art.-No. 110.473



G3560 000



511.971 (28)

REF. #339574 A

a	b	c	d	e	f
1/96					



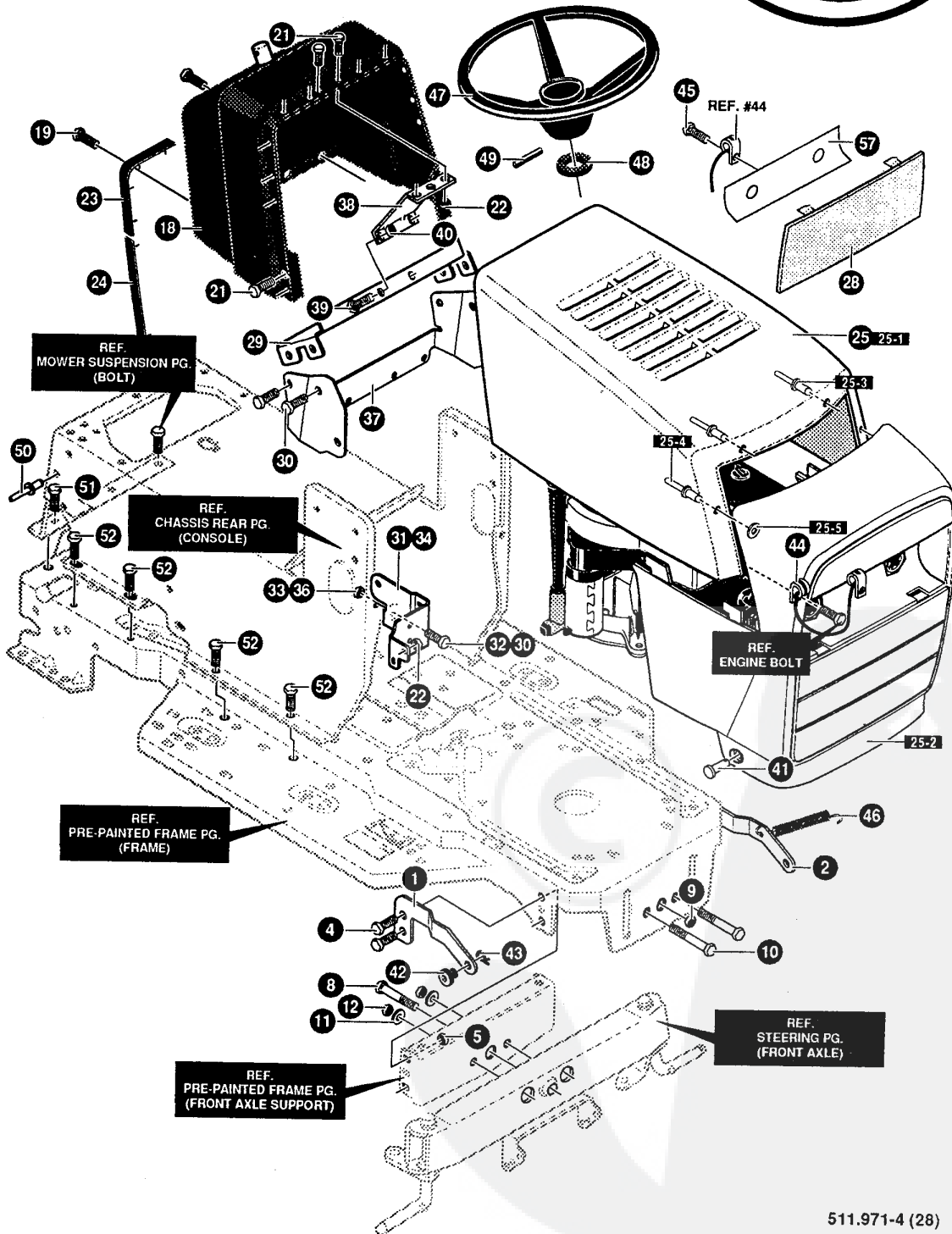
TABLE OF CONTENTS	2-3
CHASSIS & HOOD	4-7
RAHMEN UND ABDECKUNG	4-7
TELAIO E COPRIMOTORE	4-7
CAPOT	4-7
CHASSIS EN TOEBEHOREN	4-7
CHASSIS Y CARROCERIA	4-7
CHASSI OCH KÅPA	4-7
FRAME ASSEMBLY	8-9
KOMPLETTER RAHMEN	8-9
TELAIO COMPLETO	8-9
CHASSIS COMPLET	8-9
CHASSIS KOMPLEET	8-9
CHASSIS COMPLETO	8-9
STEERING	10-11
STEUERUNGSEINHEIT	10-11
UNITÀ DI CONTROLLO	10-11
ENSEMBLE DE CONDUITE	10-11
BESTURING	10-11
DIRECCIÓN	10-11
STYRNINGSENHET	10-11
MOWER SUSPENSION	12-13
BEDIENUNGSEINHEIT MÄHWERK	12-13
UNITÀ DI COMANDO GRUPPO DI TAGLIO	12-13
ENSEMBLE DE COMMANDES DU SYSTEME DE COUPE	12-13
BEDIENING MAAIWERK	12-13
MANDOS DISPOSITIVO DE CORTE	12-13
MOTION DRIVE	14-17
GETRIEBEEINHEIT UND KOTFLÜGEL	14-17
UNITÀ DI TRASMISSIONE E PARAFANGHI	14-17
ENSEMBLE DE TRANSMISSION ET AILES	14-17
VERSNELLINGSBAK EN SPATBORDEN	14-17
ENGRANAJES Y GUARDABARROS	14-17
DRIVENHET OCH KLIPPSKYDD	14-17
ENGINE & CONTROLS	18-19
MOTOR	18-19
MOTORE	18-19
MOTEUR	18-19
MOTOR	18-19
MOTOR	18-19
MOTOR	18-19

511.971-2 (28)

a	b	c	d	e	f
1/96					



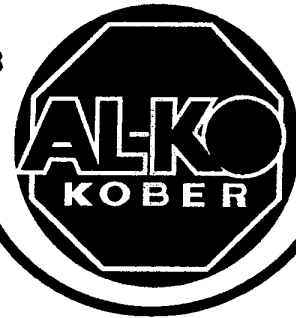
PRE-PAINTED DECK	20-21
MÄWERK	20-21
APPARATO DI TAGLIO	20-21
SYSTÈME DE COUPE	20-21
MAAIWERK	20-21
DISPOSITIVO DE CORTE	20-21
KLIPPENHET	20-21
FINAL DECK	22-23
MÄWERKSANTRIEB	22-23
TRAMMISSIONE GRUPPO DI TAGLIO	22-23
TRANSMISSION DU SYSTÈME DE COUPE	22-23
AANDRIJVING MAAIDEK	22-23
TRACCIÓN DISPOSITIVO DE CORTE	22-23
KLIPPENHETSDRIVNING	22-23
ELECTRICAL	24-25
ELEKTRIK	24-25
PARTE ELETTRICA	24-25
ÉLÉMENTS ÉLETRIQUES	24-25
ELWEC. SCHEMA	24-25
CONJUNTO ELÉTRICO	24-25
EL-KOMPONENTER	24-25
DECALS	26-27
AUFKLEBER	26-27
ETICHETTE ADESIVE	26-27
AUTO-COLLANT	26-27
ZELFKLEVER	26-27
ADHESIVOS	26-27
KILSTERMÆARKE	26-27



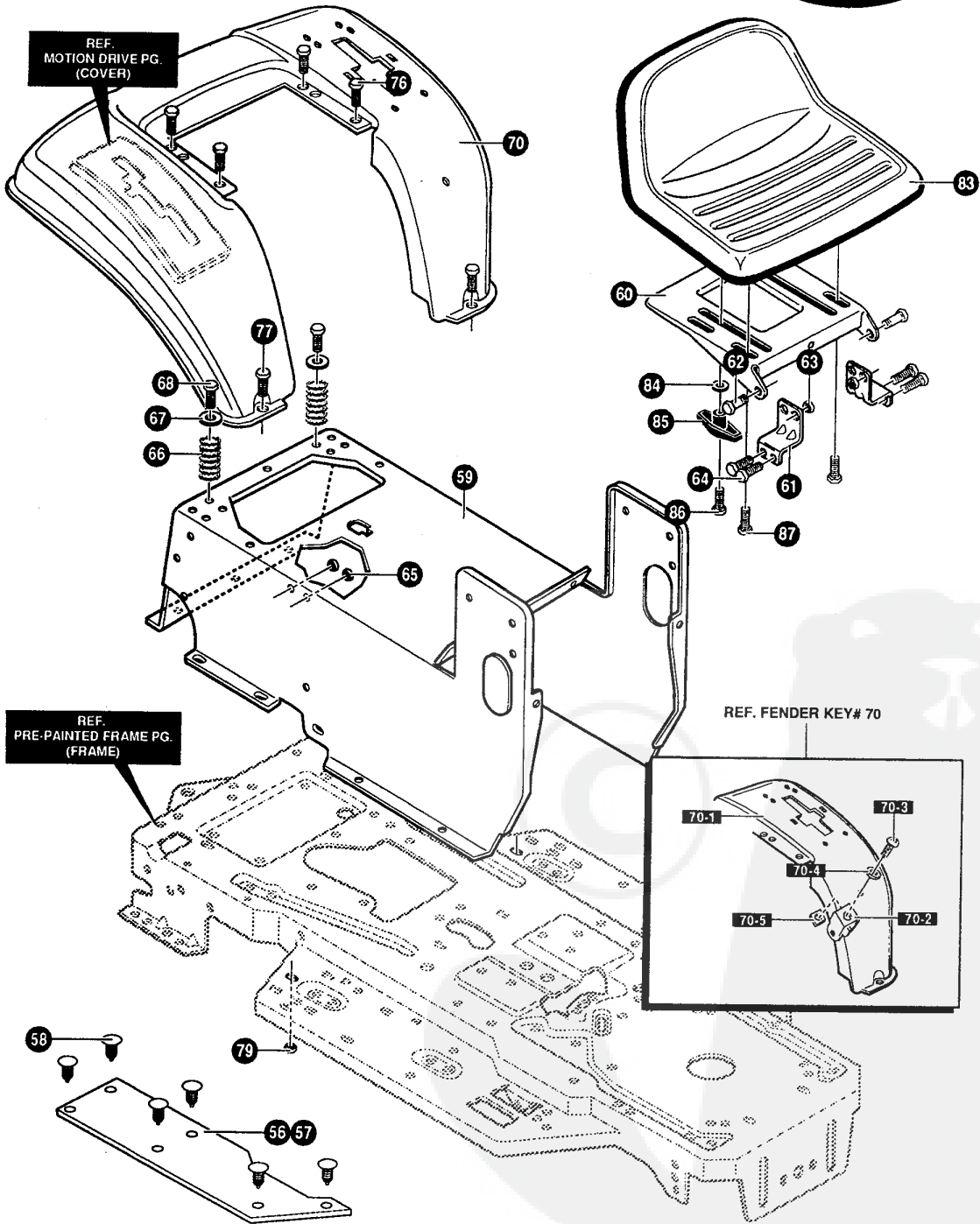
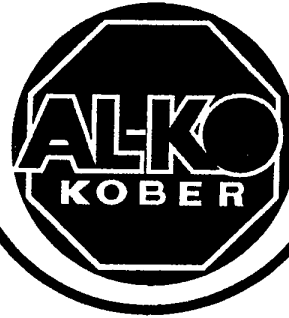
511.971-4 (28)

a	b	c	d	e	f
1/96					

338138 A



KEY#	PART#	DESCRIPTION	QTY
1	P138326203-830	BRACKET, HOOD, RH	1
2	P138326204-830	BRACKET, HOOD, LH	1
4	P13856030	SCREW, 5/16-18 X .75	4
5	P13855273	NUT, 5/16-18	4
8	P138308207	BOLT, .625 X 2.18	1
9	P138309008	NUT, 1/2-13	1
10	P138180138	SCREW, 3/8-16 X 3.00	2
11	P1382483	WASHER, .391D X 1.25D X .07	2
12	P1381499	NUT, 3/8-16	2
18	P138334796	DASH	1
19	P138318304	SCREW, 1/4-14 X .75	2
21	P138155941	SCREW, 10-24 X .63	4
22	P138308459	NUT, #10-24	4
23	P138328141	BUMPER, HOOD/DASH TOP & CORNER	2
24	P138328142	BUMPER, HOOD/DASH SIDE STRIP	2
25	P138336505	HOOD ASSEMBLY	1
25-1	P138330086	HOOD, H25	1
25-2	P138330087	'S' GRILLE, G-23	1
25-3	P138329238	RIVET, POP	2
25-4	P138333225	RIVET, POP	2
25-5	P1381501	WASHER, FLAT .203 X .56 X .040	2
28	P138325198	LENS FOR G-23 'S' GRILLE	1
29	P138324909-830	SUPPORT, STEERING/PTO	1
30	P13840886	SCREW, 1/4-20 X .38	4
31	P138326320-830	BRACKET, DASH/TANK, RH	1
32	P138180020	SCREW, 1/4-20 X .75	1
33	P1381502	NUT, 1/4-20	1
34	P138326321-830	BRACKET, DASH/TANK, LH	1
35	P138180020	SCREW, 1/4-20 X .75	1
36	P1381502	NUT, 1/4-20	1
37	P138326640-830	SUPPORT, LOWER DASH	1
38	P138327039-830	DASH, SUPPORT BRACKET	1
39	P138180020	SCREW, 1/4-20 X .75	2
40	P1381502	NUT, 1/4-20	2
41	P138323044	PIN, CLEVIS	2
42	P138326522	BEARING, HOOD	2
43	P1388260	PIN, HAIR	2
44	P138311094	LANYARD, HOOD 11.75 LONG	1
45	P13849050	SCREW, 1/4-10 X .75	1
46	P138304784	SPRING, HOOD LATCH	1
47	P138330847	STEERING WHEEL	1
48	P138317509	SPACER, SLEEVE	1
49	P138456378	PIN, SPRING	1
50	P13846763	RIVET, POP	3
52	P138995346	SCREW, 1/4-20 X .50	8
57	P138402220	FOIL, LENS REFLECTOR	1
	P138336466	AIR ASSIST/GRASS CATCHER MANUAL	1
	P138339573	OPERATOR'S MANUAL	1



511.971-6 (28)

a	b	c	d	e	f
1/96					

338254 A



KEY#	PART#	DESCRIPTION	QTY
56	P138310005	FOOT PAD, LH	1
57	P138310006	FOOT PAD, RH	1
58	P138309235	FASTENER, RATCHET BLACK	12
59	P138327575-860	CONSOLE	1
60	P138331535-860	PLATE, SEAT	1
61	P138310660-860	BRACKET, SEAT SUPPORT	2
62	P13820507	BOLT, .437 X .156	2
63	P1381498	NUT, 5/16-18	2
64	P13848901	SCREW, 5/16-18 X .63	4
65	P1381498	NUT, 5/16-18	4
66	P138337427	SPRING, SEAT	2
67	P138120392	WASHER, FLAT .281 X .63 X .065	2
68	P138995346	SCREW, 1/4-20 X .50	2
70	*	ASSEMBLY, FENDER	1
70-1	P138327471-860	FENDER	1
70-2	P1389239	CLEVIS	1
70-3	P138439455	SCREW, 5/16-18 X .56	1
70-4	P138301551	WASHER, .344 ID X 1.50 D X .09	1
70-5	P138120373	NUT, 5/16-18 SQ	1
76	P138995346	SCREW, 1/4-20 X .50	4
77	P138126358	BOLT, 5/16-18 X 1.00	2
79	P13855273	NUT, 5/16-18	2
83	P138338622	SEAT	1
84	P138120393	WASHER, FLAT .344 X .69 X .065	1
85	P138643958	HANDLE, WING NUT	1
86	P138180079	SCREW, 5/16-18 X 1.00	1
87	P138331637	BOLT, .500X .10	2

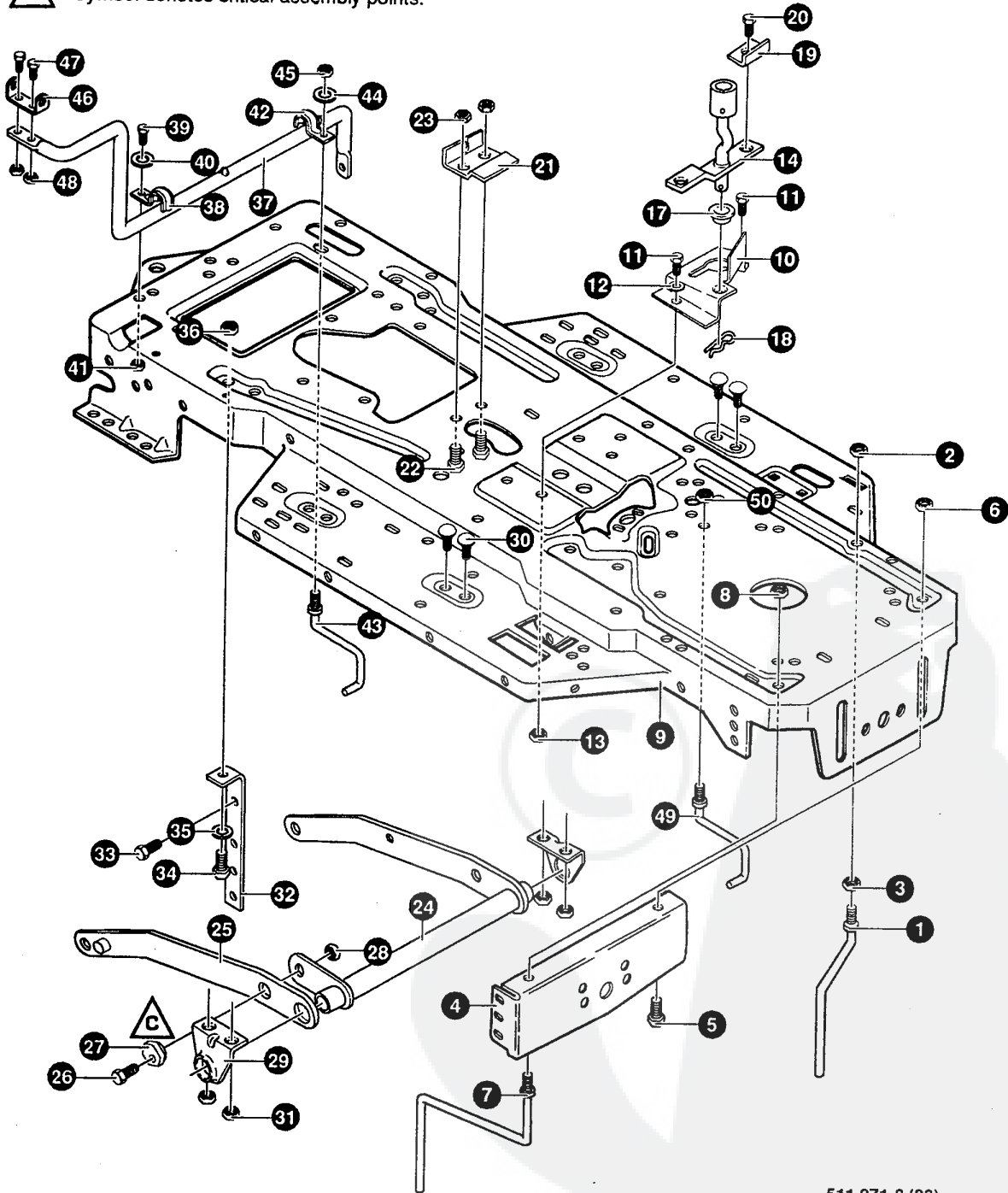
* ORDER INDIVIDUAL PARTS - ASSEMBLY NOT AVAILABLE

511.971-7 (28)

a	b	c	d	e	f
1/96					



C Symbol denotes critical assembly points.



511.971-8 (28)

a	b	c	d	e	f
1/96					

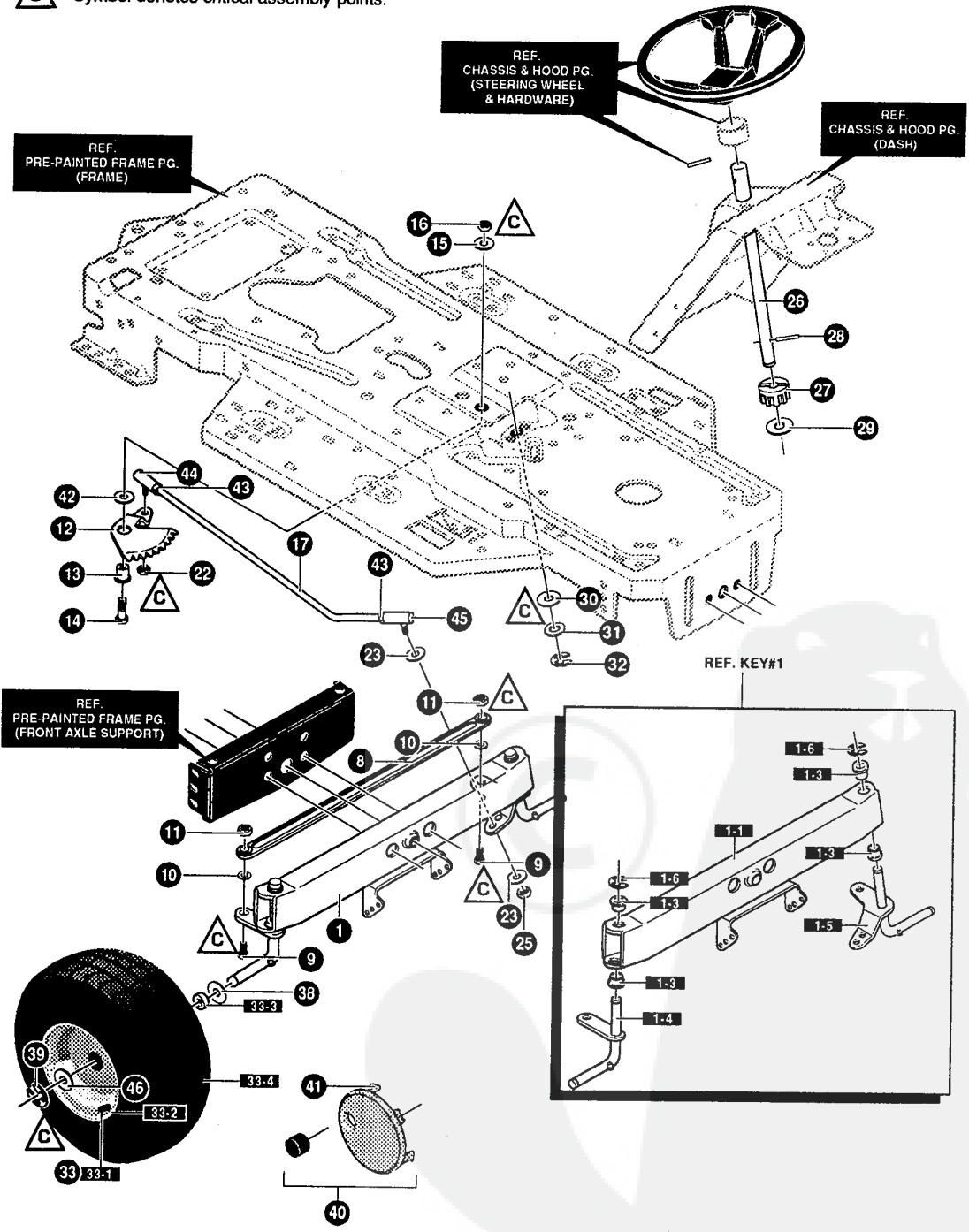
338026 B



KEY#	PART#	DESCRIPTION	QTY
1	P138327376	GUIDE, BELT	1
2	P138124824	NUT, 5/16-18	1
3	P138271190	NUT, 3/8-16	1
4	P138313541	BRACKET, FRONT AXLE	1
5	P13856030	SCREW, 5/16-18 X .75	1
6	P13855273	NUT, 5/16-18	1
7	P138300440	GUIDE, BELT	1
8	P1381498	NUT, 5/16-18	1
9	P138335851-860	FRAME	1
10	P138320075	BRACKET, CLUTCH ENGAGE LEVER	1
11	P138180079	SCREW, 5/16-18 X 1.00	2
12	P138120393	WASHER, FLAT .344 X .69 X .065	2
13	P1381498	NUT, 5/16-18	2
14	P138338048	ASSEMBLY, CLUTCH LEVER, LOWER	1
17	P13850148	BEARING, FLANGE	1
18	P1388260	PIN, HAIR	1
19	P1389400	BRACKET, SWITCH ENGAGE	1
20	P13835498	SCREW, 5/16-18 X .75	1
21	P138300698	BRACKET, FRAME CABLE	1
22	P138180020	SCREW, 1/4-20 X .75	2
23	P1381502	NUT, 1/4-20	2
24	P138300158	LIFT ASSEMBLY, LH	1
25	P138300169	LIFT ASSEMBLY, RH	1
26	P138180079	SCREW, 5/16-18 X 1.00	1
27	P13858247	NUT, ADJUST	1
28	P1381498	NUT, 5/16-18	1
29	P13858248	BRACKET, REAR HANG	2
30	P13857072	BOLT, 5/16-18 X .63	4
31	P1381498	NUT, 5/16-18	4
32	P138323739	BRACKET, STABILIZER	1
33	P13850947	SCREW, 3/8-16 X 1.25	1
34	P138180079	SCREW, 5/16-18 X 1.00	1
35	P138120393	WASHER, FLAT .344 X .69 X .065	1
36	P1381498	NUT, 5/16-18	1
37	P138319111	LEVER, SHIFT-LOWER	1
38	P138310347	CLIP- SHIFT LEVER	1
39	P138180077	SCREW, 5/16-18 X .75	1
40	P138996416	WASHER, FLAT .391 X 1.00 X .125	1
41	P1381498	NUT, 5/16-18	1
42	P138310347	CLIP- SHIFT LEVER	1
43	P13857259	GUIDE, BELT	1
44	P138996416	WASHER, FLAT .391 X 1.00 X .125	1
45	P1381498	NUT, 5/16-18	1
46	P138310356	BRACKET, PIVOT SHIFT LEVER	2
47	P138180020	SCREW, 1/4-20 X .75	2
48	P1381502	NUT, 1/4-20	1
49	P138304016	GUIDE, BELT, RH	1
50	P1381498	NUT, 5/16-18	1



C Symbol denotes critical assembly points.



511.971-10 (28)

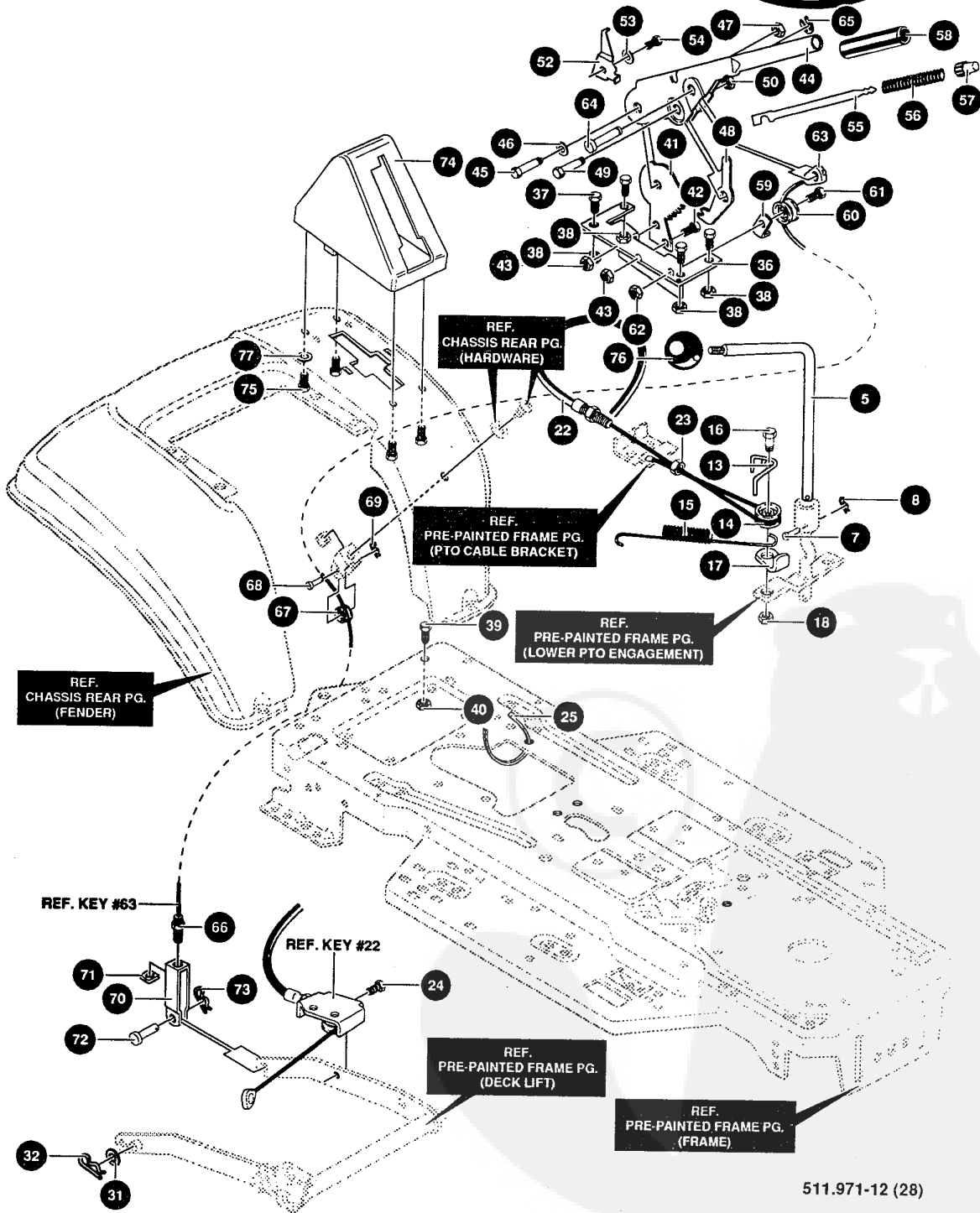
a	b	c	d	e	f
1/96					

338216 B



KEY#	PART#	DESCRIPTION	QTY
1	*	ASSEMBLY, AXLE FRONT	1
1-1	P138300272	ASSEMBLY, FRONT AXLE SUSPENDED	1
1-3	P13852407	SPINDLE BEARING	4
1-4	P138302926	ASSEMBLY, SPINDLE RH	1
1-5	P138315886	ASSEMBLY, SPINDLE LH	1
1-6	P13836625	RING, RETEX	2
8	P138304590	TIE ROD ASSEMBLY	1
9	P138180128	SCREW, 3/8-16 X 1.75	2
10	P138120382	WASHER, .393 X .68 X .10	2
11	P1381499	NUT, 3/8-16	2
12	P13858289	SECTOR, STEERING	1
13	P13852406	BEARING, FLANGE	1
14	P138180177	SCREW, 1/2-13 X 1.50	1
15	P13822265	WASHER, FLAT .515 X 1.38 X .119	1
16	P1381500	NUT, 1/2-13	1
17	P13858291	STEERING LINK	1
22	P138412349	NUT, 3/8-24	1
23	P138996416	WASHER, FLAT .391 X 1.00 X .125	2
25	P138412349	NUT, 3/8-24	1
26	P138332528	SHAFT, STEERING	1
27	P13858244	PINION, STEERING	1
28	P13858274	PIN, DOWEL	1
29	P138301410	BEARING, FLANGE	1
30	P138301398	WASHER, FORMED 1.135 X 1.53 X .12	1
31	P13821682	WASHER, FLAT .765 X 1.25 X .042	1
32	P13836625	RING, RETEX	1
33	P138692287	TIRE & RIM ASSEMBLY, PU 15 X 6.0 X 6	2
33-1	P138338512	VALVE STEM	
33-2	P138338517	RIM, WHEEL	
33-3	P138338513	BEARING	
33-4	P138338516	TIRE, 15 X 6-6	
38	P138642	WASHER, FLAT .755 X 1.31 X .075	2
39	P13836625	RING, RETEX	2
40	P13840394	HUB CAP	2
41		NOT REQUIRED ON THIS UNIT	
42	P13849998	WASHER, FLAT .520 X 1.25 X .209	1
43	P138124925	NUT, 3/8-24	2
44	P13857158	BALL JOINT 3/8 THD	1
45	P13821275	BALL JOINT 3/8 THD	1
46	P13842815	WASHER, FLAT .755 X 1.53 X .07	2

* ORDER INDIVIDUAL PARTS - ASSEMBLY NOT AVAILABLE



511.971-12 (28)

a	b	c	d	e	f
1/96					

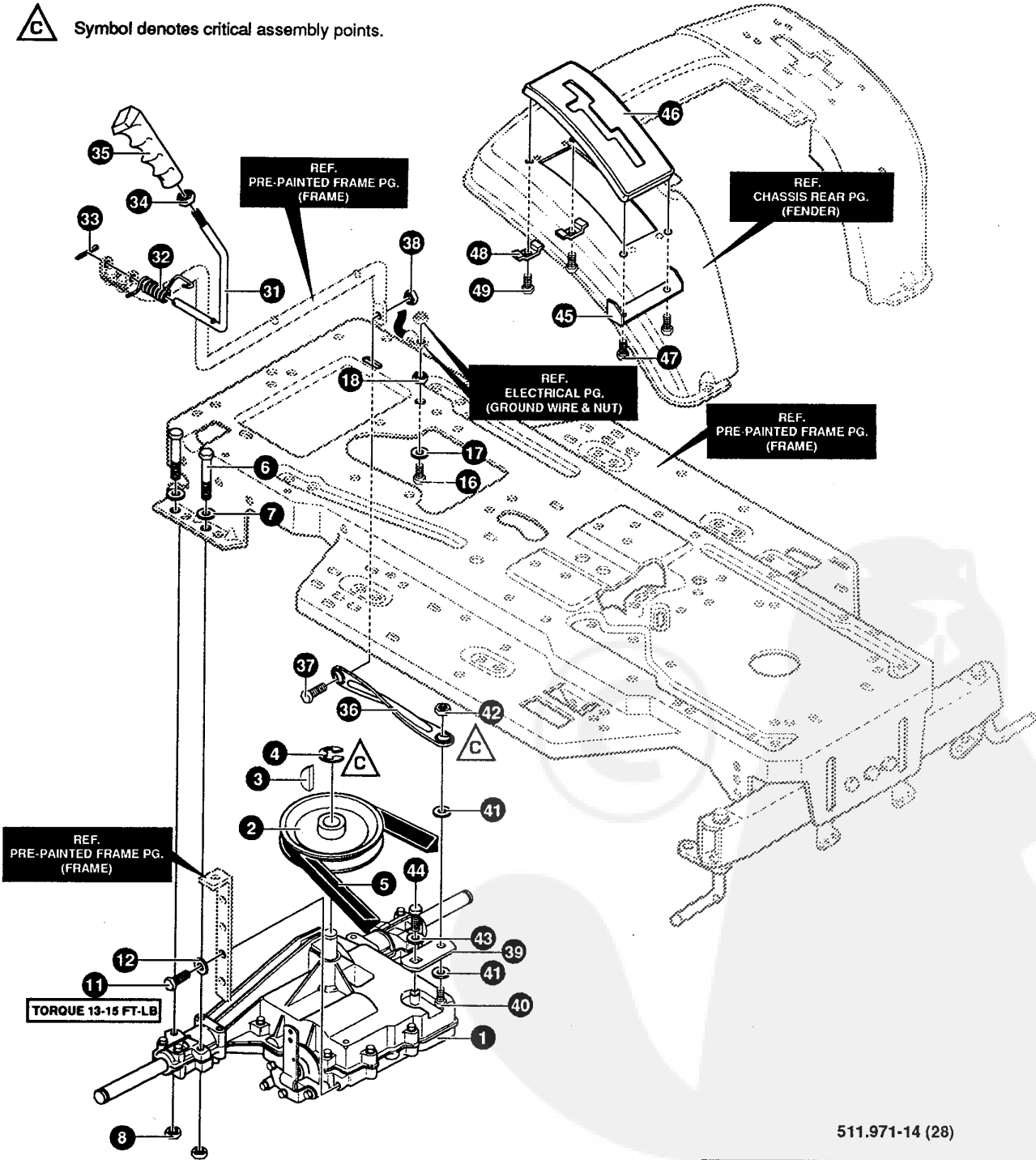
338290 A



KEY#	PART#	DESCRIPTION	QTY
5	P138338049	LEVER, PTO UPPER	1
7	P138304877	PIN, CLEVIS .25D X 1.094	1
8	P13836368	PIN, HAIR	1
13	P138324032	SPRING, CABLE KEEPER	1
14	P13848306	PULLEY, METAL	1
15	P138316648	SPRING	1
16	P138324045	BOLT, .375 X .565	1
17	P1381288	BRACKET, CABLE RETAINER	1
18	P1381502	NUT, 1/4-20	1
22	P138324055	ASSEMBLY, CABLE PTO ENGAGE	1
23	P138120613	NUT, 1/4-28	1
24	P138335639	SCREW, 5/16-18 X .62	1
25	P13857444	TIE, CABLE	1
31	P138417098	WASHER, FLAT .531 X 1.06 X .063	2
32	P1388260	PIN, HAIR	2
36	P138313926	BRACKET, HEIGHT ADJUST	1
37	P138180077	SCREW, 5/16-18 X .75	4
38	P1381498	NUT, 5/16-18	4
39	P138180077	SCREW, 5/16-18 X .75	1
40	P1381498	NUT, 5/16-18	1
41	P138301238	QUADRANT, HEIGHT ADJUST	1
42	P138180077	SCREW, 5/16-18 X .75	2
43	P1381498	NUT, 5/16-18	2
44	P138322292-830	HANDLE, LIFT SHORT	1
45	P138300171	BOLT, .500 X .270	1
46	P138996418	WASHER, FLAT .506 X .75 X .024	1
47	P13844108	NUT, 5/16-18	1
48	P138301239	PAWL, SQUARE	1
49	P138300171	BOLT, .500 X .270	1
50	P13844108	NUT, 5/16-18	1
52	P1389435	POINTER, HEIGHT ADJUST	1
53	P138138479	WASHER, .195 X .41 X .03	1
54	P13835287	SCREW, #8-32 X .38	1
55	P138303027	ROD, ACTUATOR-SHORT	1
56	P13858326	SPRING, HEIGHT ADJUST	1
57	P13858325	KNOB, HEIGHT ADJUST	1
58	P13858329	GRIP, W/ HOLE BLACK	1
59	P1389149	BRACKET, CABLE RETAINER	1
60	P13848306	PULLEY, METAL	1
61	P13858336	BOLT, .375 X .375	1
62	P1381502	NUT, 1/4-20	1
63	P138314177	ASSEMBLY, CABLE LIFT	1
64	P138300310	PIN, CLEVIS	1
65	P138300311	RING, RET E	1
66	P138120375	NUT, 1/4-20	1
67	P13848306	PULLEY, METAL	1
68	P138300317	PIN, CLEVIS	1
69	P1388260	PIN, HAIR	1
70	P1389405	CLEVIS, LIFT CABLE	1
71	P138120372	NUT, 1/4-20	1
72	P13839522	PIN, CLEVIS	1
73	P138121222	PIN, COTTER	1
74	P138333903	LIFT COVER	1
75	P138300340	SCREW, #10 X .75	3
76	P138321837	KNOB	1
77	P138120392	WASHER, FLAT .281 X .63 X .065	1



C Symbol denotes critical assembly points.



511.971-14 (28)

a	b	c	d	e	f
1/96					

338234 B

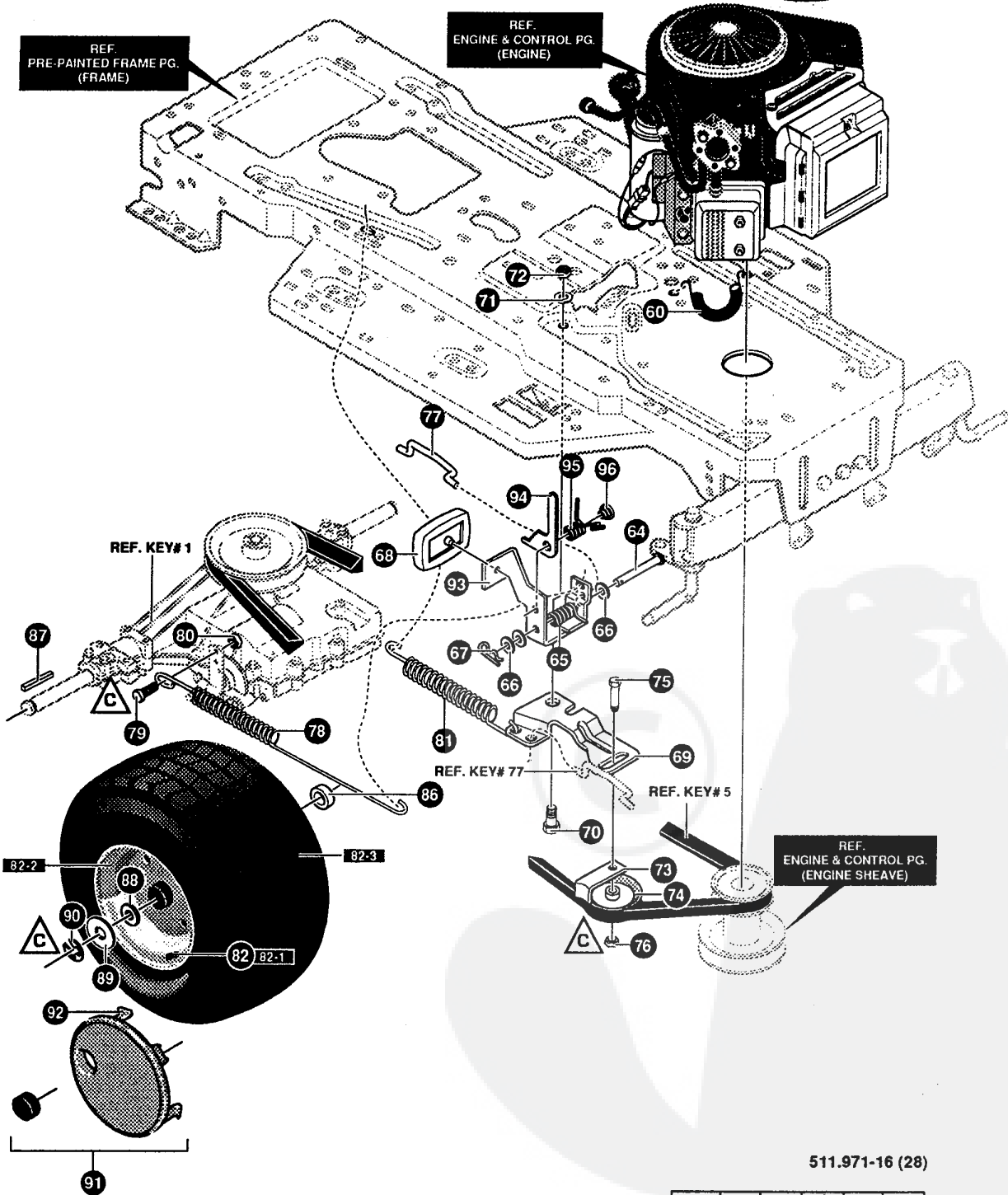


KEY#	PART#	DESCRIPTION	QTY
1	*	TRANSAXLE, 2WS	1
2	P138302745	PULLEY, 6.6 OD	1
3	P13850795	KEY, HI-PRO	1
4	P13822053	RING, RETEX	1
5	P138314120	BELT, V 4L 87.25	1
6	P138180091	SCREW, 5/16-18 X 2.50	4
7	P138120393	WASHER, FLAT .344 X .69 X .065	4
8	P1381498	NUT, 5/16-18	4
11	P13835498	SCREW, 5/16-18 X .75	2
12	P138120638	WASHER, .328 X .60 X .09	2
16	P138180077	SCREW, 5/16-18 X .75	1
17	P138138538	WASHER, .320 X .61 X .03	1
18	P1381498	NUT, 5/16-18	1
31	P138324798	LEVER, SHIFT UPPER	1
32	P138310265	SPRING, TORSION	1
33	P138137185	PIN, COTTER	1
34	P138120238	NUT, 1/2-13	1
35	P138306690	HANDLE, 1/2-13	1
36	P138314965	LINK, TIE ROD SHIFT	1
37	P138180124	SCREW, 3/8-16 X 1.25	1
38	P1381499	NUT, 3/8-16	1
39	P138309637	BRACKET, SHIFT	1
40	P138180124	SCREW, 3/8-16 X 1.25	1
41	P138120394	WASHER, FLAT .406 X .81 X .065	2
42	P1381499	NUT, 3/8-16	1
43	P13857157	WASHER, .750 X .250	1
44	P13856255	SCREW, 1/4-28 X .75	1
45	P138311257-830	BRACKET COVER	1
46	P138311209	COVER PLASTIC	1
47	P138311331	SCREW, 1/4-15 X .44/.53	2
48	P1381341	CLAMP, SPRING	2
49	P138311331	SCREW, 1/4-15 X .44/.53	2

* CONTACT YOUR NEAREST TRANSAXLE DEALER FOR PARTS & SERVICE

511.971-15 (28)

a	b	c	d	e	f
1/96					



511.971-16 (28)

a	b	c	d	e	f
1/96					

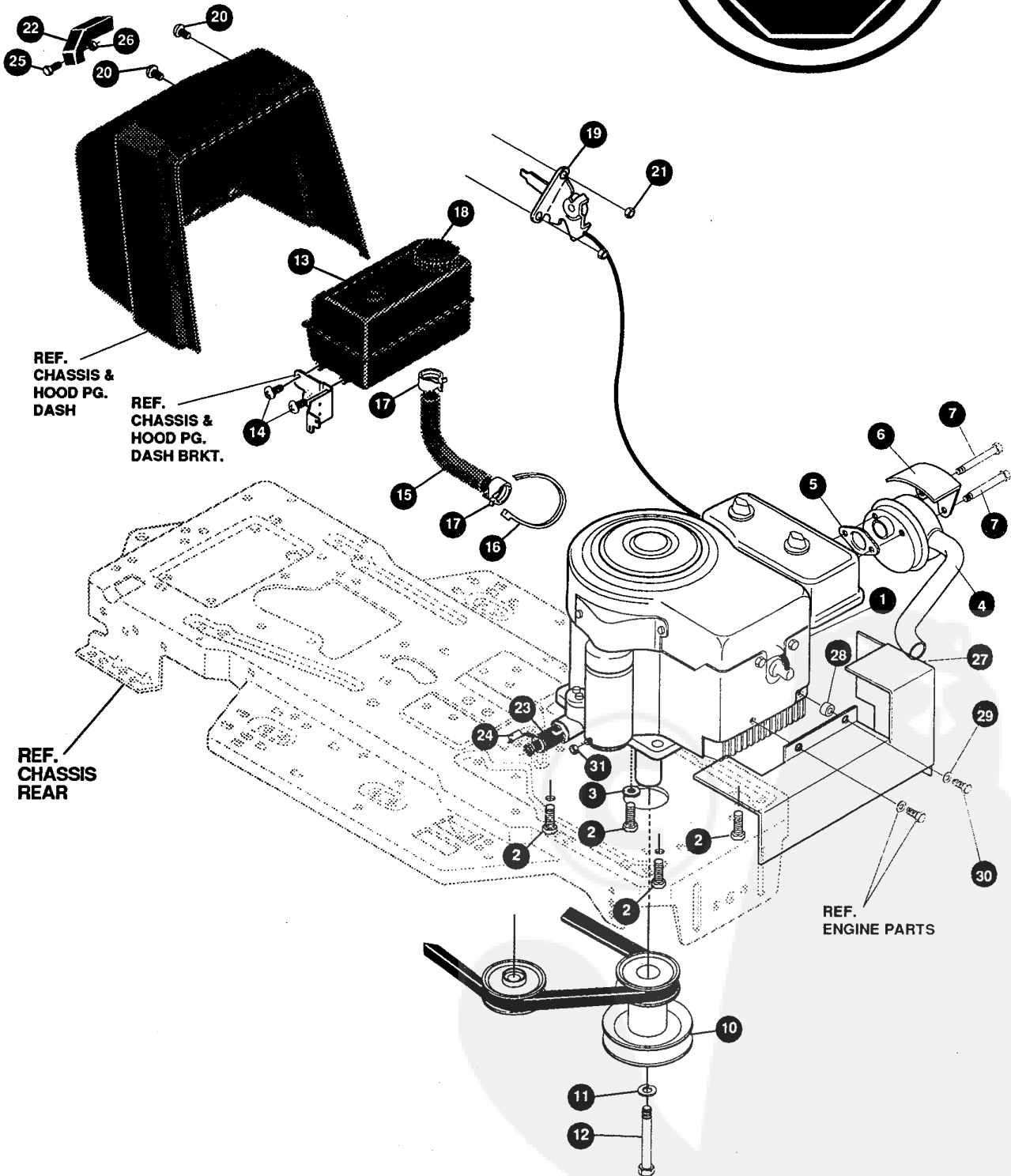
338234 B



KEY#	PART#	DESCRIPTION	QTY
60	P138321514	SPRING, DRAG LINK	1
64	P138319675	PIN, CLEVIS	1
65	P13857847	SPRING, BRAKE PEDAL	1
66	P1382968	WASHER, FLAT .504 X .75 X .059	3
67	P13856180	PIN, HAIR	1
68	P13848160	PAD, CLUTCH BRAKE W/PRINTING	1
69	P138320381	ARM, IDLER TRACTION	1
70	P138329989	BOLT, .625 X .135	1
71	P13845602	WASHER, FLAT .333 X .87 X .119	1
72	P1381498	NUT, 5/16-18	1
73	P13839659	RETAINER, BELT	1
74	P13835374	PULLEY, IDLER	1
75	P13845892	BOLT, 3/8-16 X 1.50	1
76	P1381499	NUT, 3/8-16	1
77	P13857204	ROD, CLUTCH	1
78	P138325937	SPRING, BRAKE	1
79	P138326131	BOLT, .495 X .31	1
80	P1381498	NUT, 5/16-18	1
81	P138330505	SPRING, CLUTCH	1
82	P138692291	TIRE & RIM ASSEMBLY, 20"	2
82-1	P138338512	VALVE STEM	
82-2	P138338524	RIM, WHEEL	
82-3	P138338528	TIRE, 20"	
86	P138338184	SPACER	2
87	P13852928	KEY, SQUARE	2
88	P138642	WASHER, FLAT .755 X 1.31 X .075	4
89	P13842815	WASHER, FLAT .755 X 1.53 X .07	2
90	P13836625	RING, RETEX	2
91	P13840394	HUB CAP	2
92		NOT REQUIRED ON THIS UNIT	
93	P138325941-830	PEDAL CLUTCH/BRAKE	1
94	P1389016	LEVER, PARK BRAKE	1
95	P13857828	SPRING, PARKING BRAKE	1
96	P13857829	RIVET	1

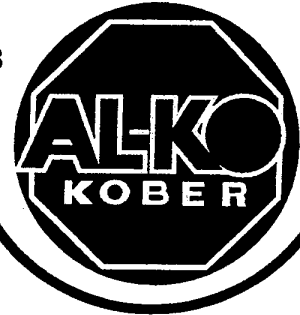
511.971-17 (28)

a	b	c	d	e	f
1/96					



a	b	c	d	e	f
1/96					

336685 A

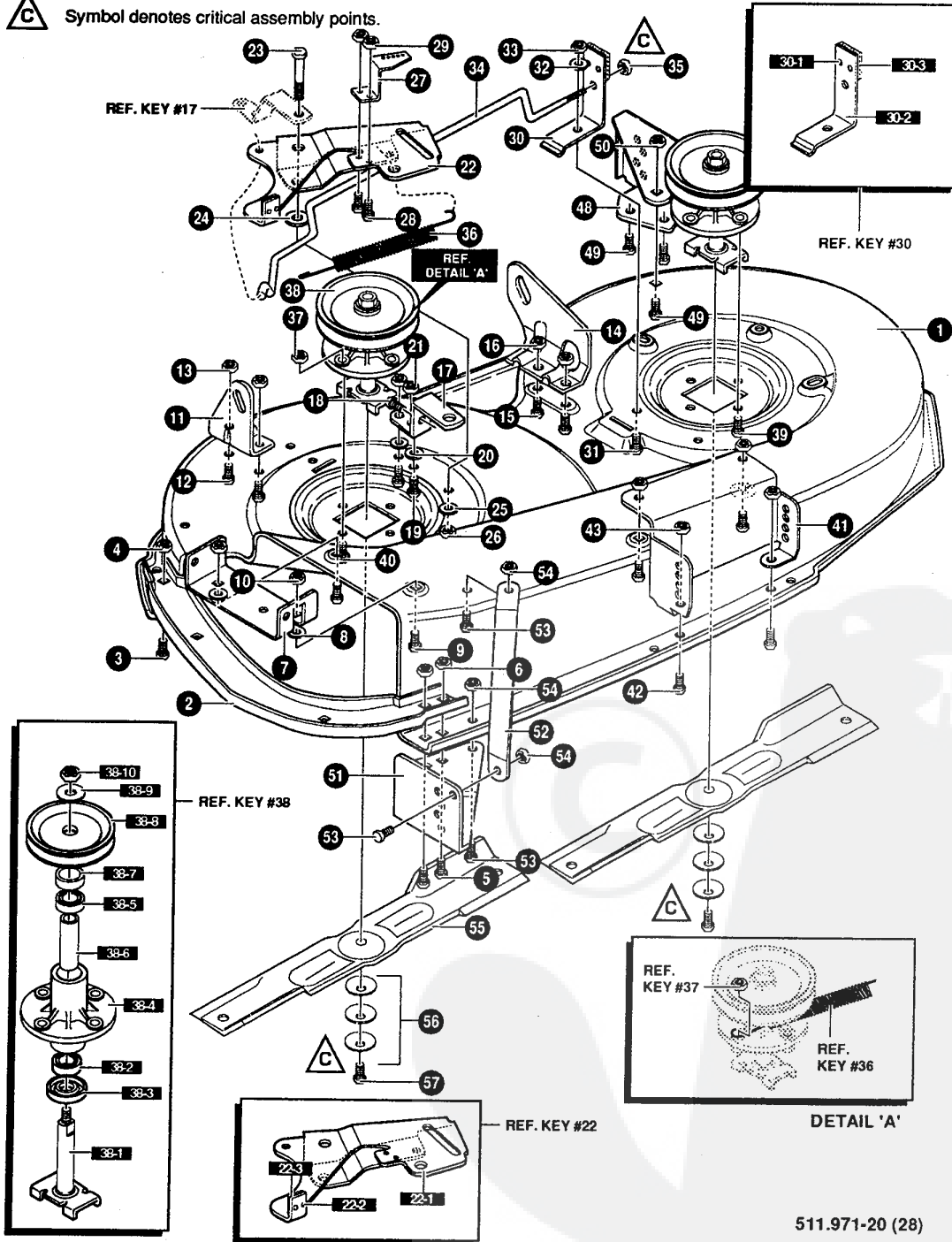


KEY#	PART#	DESCRIPTION	QTY
1	*	ENGINE, 12-12.5HP	1
2	P13850947	SCREW, 3/8-16 X 1.25	4
3	P138138489	WASHER, .384 X .69 X .04	1
4	P138305367	MUFFLER	1
5	P13846708	GASKET, MUFFLER	1
6	P13854767	SHIELD, HEAT, FOR ROUND MUFFLER	1
7	P13854980	SCREW, 5/16-18 X 3.50	2
10	P138328028	PULLEY, ENGINE	1
11	P138120383	WASHER, .459 X .78 X .12	1
12	P138433146	SCREW, 7/16-20 X 4.25	1
13	P138309853	TANK, FUEL 1.5 WO/SENSOR CLEAR	1
14	P138300303	SCREW, .25 X .75 X .51	4
15	P13842258	TUBING, .25 X .50 X BULK GAS LINE	11.0"
16	P13857444	TIE, CABLE	1
17	P13847345	CLAMP, HOSE SCREW TYPE	2
18	P13812501	CAP, FUEL 2.5"	1
19	P138329148	THROTTLE, CONTROL	1
20	P138155941	SCREW, 10-24 X .63	2
21	P138308459	NUT, #10-24	2
22	P138300508	KNOB	1
23	P138325547	OIL DRAIN VALVE ASSEMBLY	1
24	P138327422	CAP, OIL	1
25	P138159585	SCREW, #8-32 X .38	1
26	P138120622	NUT, #8-32	1
27	P138308543-830	HEAT SHIELD ASSEMBLY	1
28	P13841462	SPACER, SLEEVE	1
29	P138120380	WASHER, .263 X .49 X .07	1
30	P138180022	SCREW, 1/4-20 X 1.00	1
31	P138124818	NUT, 1/4-20	1

* SEE ENGINE MANUAL



C Symbol denotes critical assembly points.



511.971-20 (28)

a	b	c	d	e	f
1/96					

318345 J



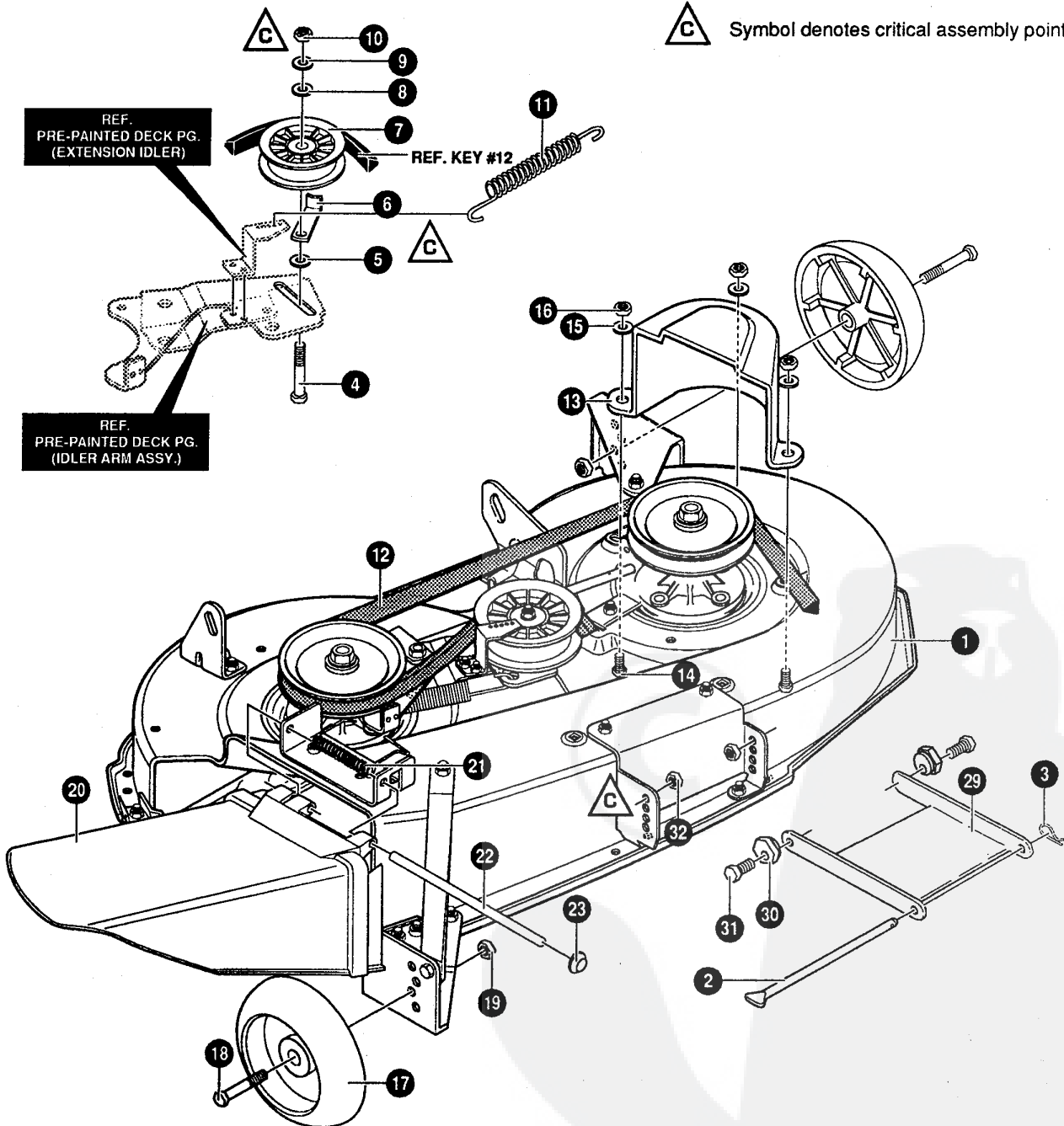
KEY#	PART#	DESCRIPTION	QTY
1	P138325103	40" DECK KIT	1
2	P138326480	TOE GUARD - MULCHER	1
3	P138180077	SCREW, 5/16-18 X .75	1
4	P1381498	NUT, 5/16-18	1
5	P138180077	SCREW, 5/16-18 X .75	2
6	P1381498	NUT, 5/16-18	2
7	P138317017	BRACKET, CHUTE MOUNT	1
8	P138120393	WASHER, FLAT .344 X .69 X .065	2
9	P138180077	SCREW, 5/16-18 X .75	2
10	P1381498	NUT, 5/16-18	2
11	P138313929	BRACKET, RH LIFT REAR	1
12	P138180077	SCREW, 5/16-18 X .75	2
13	P1381498	NUT, 5/16-18	2
14	P138310667	BRACKET, LH LIFT REAR	1
15	P138180077	SCREW, 5/16-18 X .75	2
16	P1381498	NUT, 5/16-18	2
17	P138326893	BRACE, IDLER SUPPORT	1
18	P138308231	SCREW, 1/4-20 X 1.25	1
19	P138180077	SCREW, 5/16-18 X .75	2
20	P138120393	WASHER, FLAT .344 X .69 X .065	2
21	P13844108	NUT, 5/16-18	2
22	P138322120	IDLER ARM ASSEMBLY	1
22-1	P138322116	ARM IDLER	1
22-2	P13841601	RIVET	2
22-3	P138306973	BRAKE PAD	1
23	P138304420	BOLT, .500 X 2.15	1
24	P138996307	WASHER, FLAT .391 X 1.00 X .209	1
25	P138996416	WASHER, FLAT .391 X 1.00 X .125	2
26	P13845171	NUT, 3/8-16	1
27	P138326249	BRACKET, EXTENSION IDLER	1
28	P138180077	SCREW, 5/16-18 X .75	2
29	P1381498	NUT, 5/16-18	2
30	P138321828	BLADE BRAKE ASSEMBLY	1
30-1	P138135624	RIVET	2
30-2	P138304119	BRAKE ARM	1
30-3	P138306973	BRAKE PAD	1
31	P138180077	SCREW, 5/16-18 X .75	1
32	P138120393	WASHER, FLAT .344 X .69 X .065	1
33	P1381498	NUT, 5/16-18	1
34	P138302714	ROD, BRAKE	1
35	P1381502	NUT, 1/4-20	1
36	P13835410	SPRING	1
37	P1381498	NUT, 5/16-18	1
38	P138337734	QUILL ASSEMBLY	2
38-1	P13856425	SHAFT/SADDLE	1
38-2	P13849562	BEARING, BALL	1
38-3	P13850616	DUST SHIELD	1
38-4	P13855547	QUILL CASTING	1
38-5	P13849562	BEARING, BALL	1
38-6	P13850818	SPACER, SLEEVE	1
38-7	P138331067	SPACER, QUILL	1
38-8	P138333132	PULLEY, QUILL V5L	1
38-9	P13856365	WASHER, SPECIAL QUILL	1
38-10	P1381282	NUT, 7/16-20	1
39	P13835498	SCREW, 5/16-18 X .75	7
40	P138300345	SCREW, 5/16-18 X 1.38	1
41	P138318445	BRACKET, FRONT DECK	1
42	P138180077	SCREW, 5/16-18 X .75	4
43	P1381498	NUT, 5/16-18	4
48	P138317041	BRACKET, GAGE WHEEL, LH	1
49	P138180077	SCREW, 5/16-18 X .75	3
50	P1381498	NUT, 5/16-18	3
51	P138322464	BRACKET, GAGE WHEEL, RH, FRONT	1
52	P138314282	BRACKET, STABILIZER	1
53	P138180077	SCREW, 5/16-18 X .75	3
54	P1381498	NUT, 5/16-18	3
55	P138313316	BLADE, 40" 20.32	2
56	P1382483	WASHER, .391D X 1.25D X .07	6
57	P13839573	SCREW, 3/8-24 X 1.00	2

511.971-21 (28)

a	b	c	d	e	f
1/96					



C Symbol denotes critical assembly points.



511.971-22 (28)

a	b	c	d	e	f
1/96					

325680 C

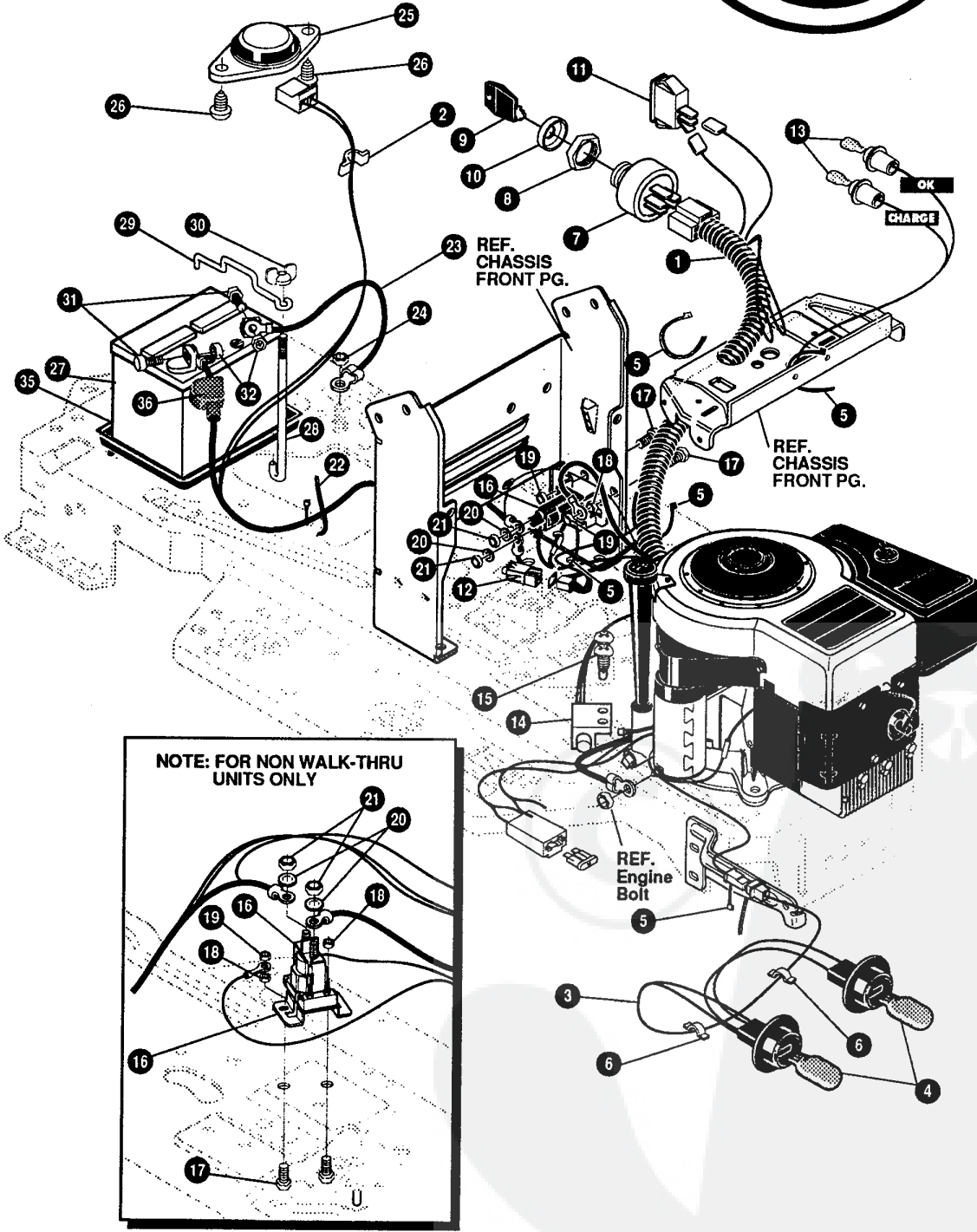


KEY#	PART#	DESCRIPTION	QTY
1	*	DECK, 40" MOWER	1
2	P13858306	ROD, DECK HITCH	1
3	P1388260	PIN, HAIR	1
4	P13857325	BOLT, 3/8-16 X 2.00	1
5	P13825210	WASHER, FLAT .386 X 1.25 X .09	1
6	P1381346	RETAINER, BELT	1
7	P138310326	PULLEY, IDLER	1
8	P138996307	WASHER, FLAT .391 X 1.00 X .209	1
9	P138120382	WASHER, .393 X .68 X .10	1
10	P138120377	NUT, 3/8-16	1
11	P138300473	SPRING, TENSION	1
12	P138319005	BELT, V 5L 81.00	1
13	P138328257	GUARD, BELT, LH	1
14	P138180077	SCREW, 5/16-18 X .75	3
15	P138120393	WASHER, FLAT .344 X .69 X .065	3
16	P1381498	NUT, 5/16-18	3
17	P138302611	GAUGE WHEEL	2
18	P13823763	BOLT, .500 X 1.390	2
19	P1381499	NUT, 3/8-16	2
20	P138304422	CHUTE DEFLECTOR	1
21	P138314975	SPRING, TORSION	1
22	P138304424	ROD, PIVOT DECK	1
23	P1383535	NUT, PUSH ON CAP	1
29	P13858305-830	BRACKET, LINK DECK FRONT	1
30	P13858247	NUT, ADJUST	2
31	P138180079	SCREW, 5/16-18 X 1.00	2
32	P1381498	NUT, 5/16-18	2

* REFERENCE ONLY

511.971-23 (28)

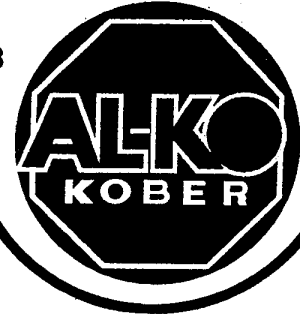
a	b	c	d	e	f
1/96					



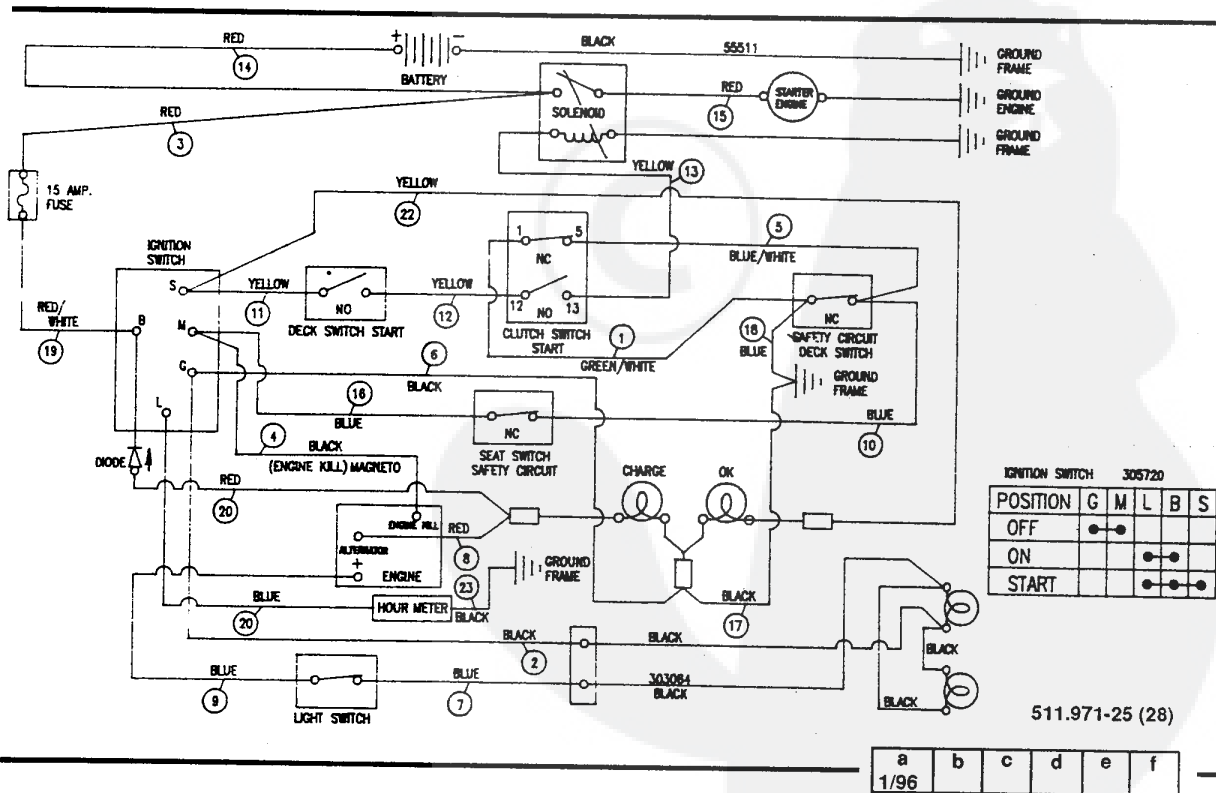
511.971-24 (28)

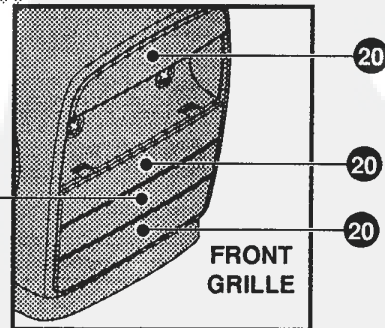
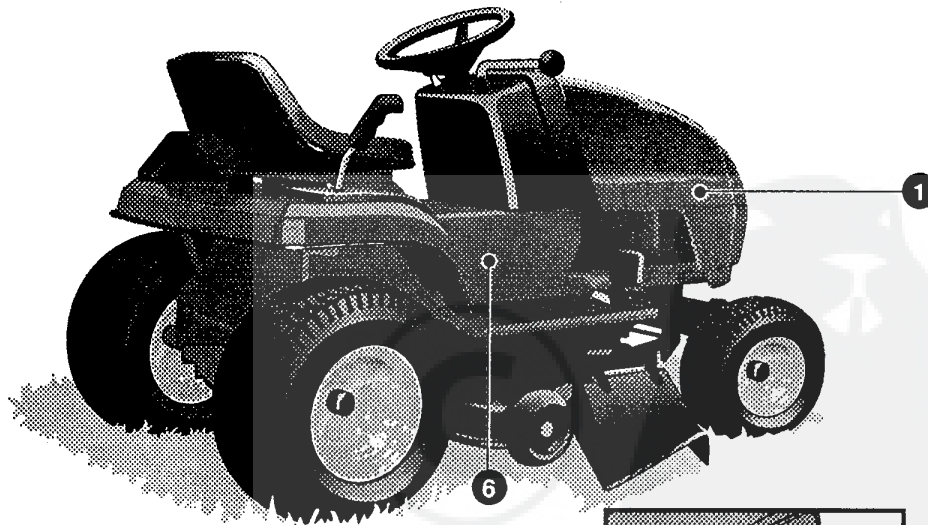
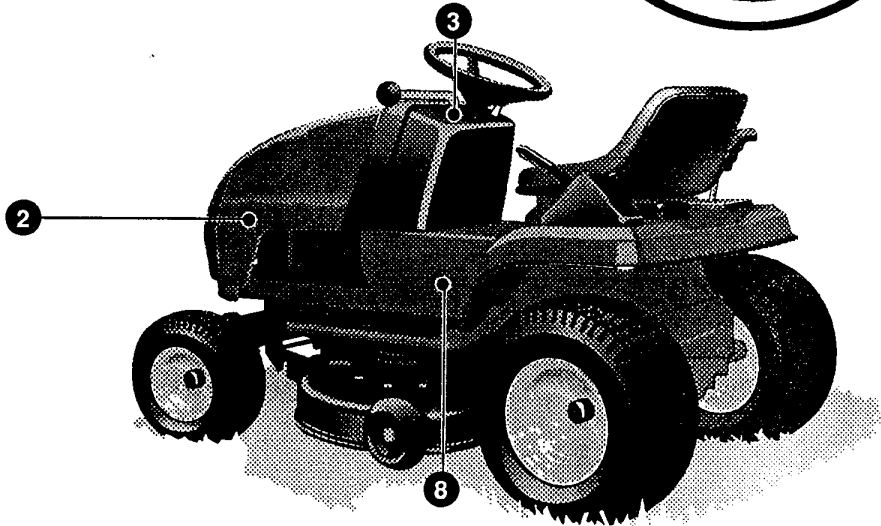
a	b	c	d	e	f
1/96					

332732 D



KEY#	PART#	DESCRIPTION	QTY
1	P138331395	HARNES, WIRE	1
2	P13841482	PRESS CLIP	1
3	P138303064	ASSEMBLY, LIGHT WIRE	1
4	P13852572	BULB, HEADLAMP	2
5	P13857444	TIE, CABLE	5
6	P13841482	PRESS CLIP	3
7	P138327355	SWITCH-IGNITION	1
8	P138327352	NUT, 5/8-8	1
9	P138327350	KEY, IGNITION	2
10	P138300194	BOOT, IGNITION SWITCH	1
11	P138328826	LIGHT SWITCH, PANEL MOUNT	1
12	P138320082	SWITCH, DOUBLE POLE	1
13	P13857769	BULB, INDICATOR	2
14	P13857476	SWITCH, SCREW MOUNT	1
15	P13857220	SCREW, #12 X .50	2
16	P13853716	SOLENOID	1
17	P138187745	SCREW, 1/4-20 X .75	2
18	P1381502	NUT, 1/4-20	2
19	P138271172	NUT, 1/4-20	1
20	P138138485	WASHER, .320 X .61 X .03	2
21	P138120368	NUT, 5/16-24	2
22	P13857444	TIE, CABLE	1
23	P13855511	WIRE, GROUND	1
24	P138271184	NUT, 5/16-18	1
25	P13857547	SWITCH, SEAT	1
26	P138160505	SCREW, 1/4-20 X .38	2
27	P138302257	BATTERY, 12V	1
28	P13857551	ROD, BATTERY	1
29	P13857552	ROD, BATTERY, TOP	1
30	P138325232	NUT, WING 1/4-20	1
31	P138180020	SCREW, 1/4-20 X .75	2
32	P138271172	NUT, 1/4-20	2
35	P13891895	TRAY - BATTERY	1
36	P138335417	BOOT, BATTERY	1



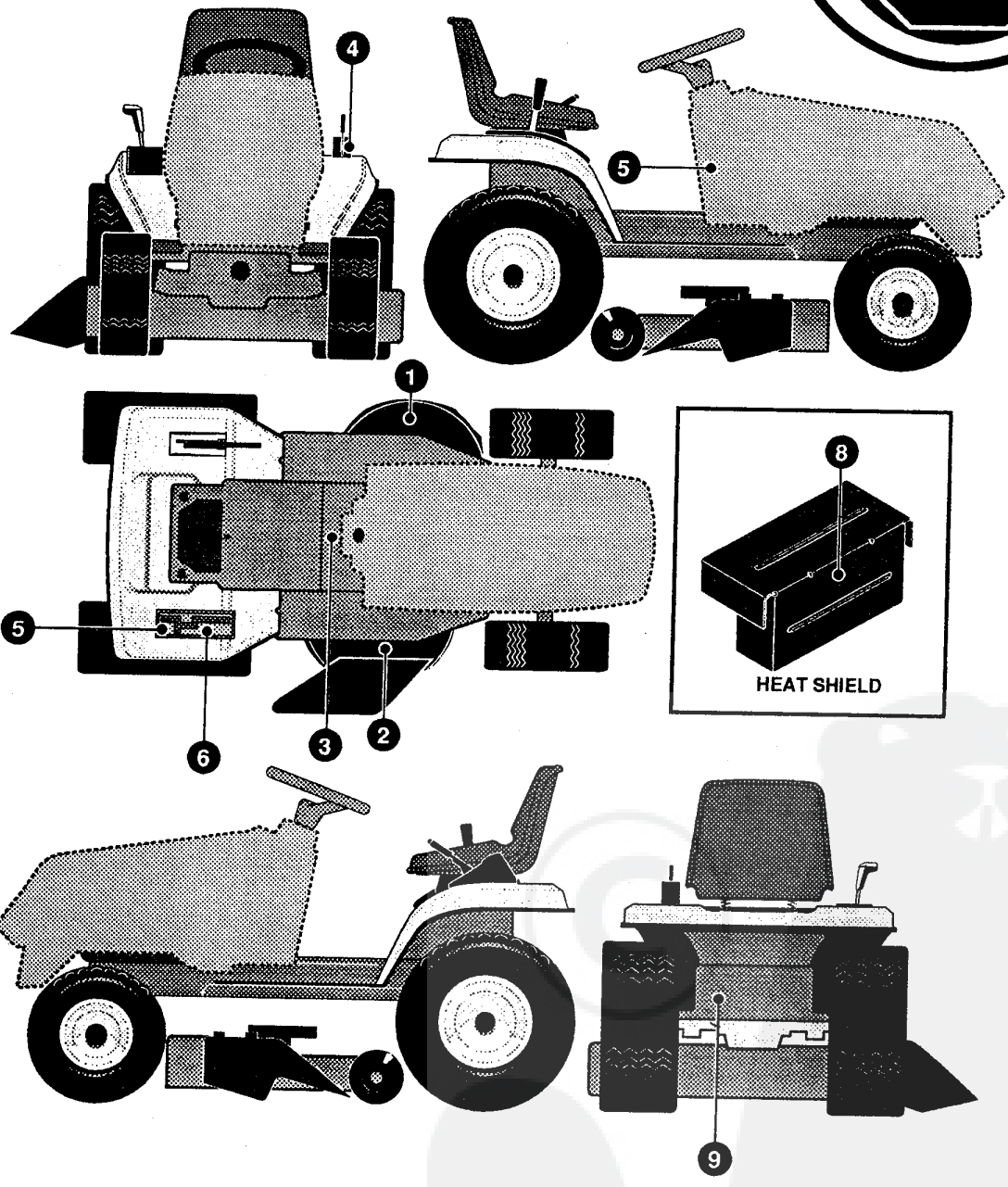


KEY#	PART#	DESCRIPTION	QTY
1	402272	DECAL, HOOD ALKO MASTER, RH	1
2	402273	DECAL, HOOD ALKO MASTER, LH	1
3	334963	DECAL, DASH	1
6	402672	DECAL, CONSOLE, ALKO T13102SD	1
8	402673	DECAL, CONSOLE, ALKO T13102SD	1
20	402280	ALKO GRILLE 4 PC DECAL SET	1

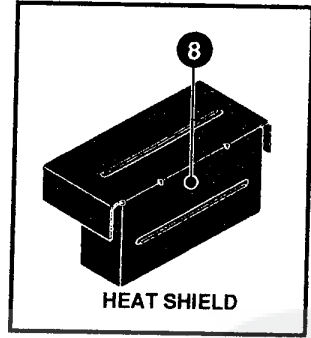
511.971-26 (28)

a	b	c	d	e	f
1/96					

339620 A



KEY#	PART#	DESCRIPTION	QTY
1	P138402700	DECAL, CAUTION DECK, LH.....	1
2	P138402701	DECAL, CAUTION DECK, RH, CUT HAND	1
3	P138338539	DECAL, CONS CAUTION.....	1
4	P138402214	DECAL, HEIGHT ADJUST	1
5	P138311394	DECAL, SHIFT REV/NEUTRAL.....	1
6	P138331005	DECAL, SHIFTER POSITION	1
7	P138402702	DECAL, BRAKE/CLUTCH	1
8	P138338543	DECAL, HOT SURFACE WARNING	1
9	P138338542	DECAL, DRAWBAR WARNING	1



511.971-27 (28)

a	b	c	d	e	f
1/96					