

TR 700AR

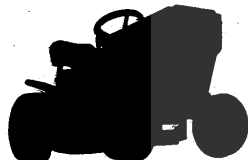
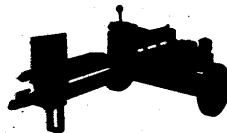
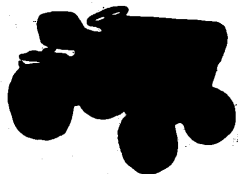
OWNER'S MANUAL

46 INCH DOZER

MODEL NUMBER TR700AR

USED WITH LIFT MECHANISM

MODEL NUMBER TR710AR



LAWN AND GARDEN
OUTDOOR POWER EQUIPMENT

ROPER

OUTDOOR POWER PRODUCTS

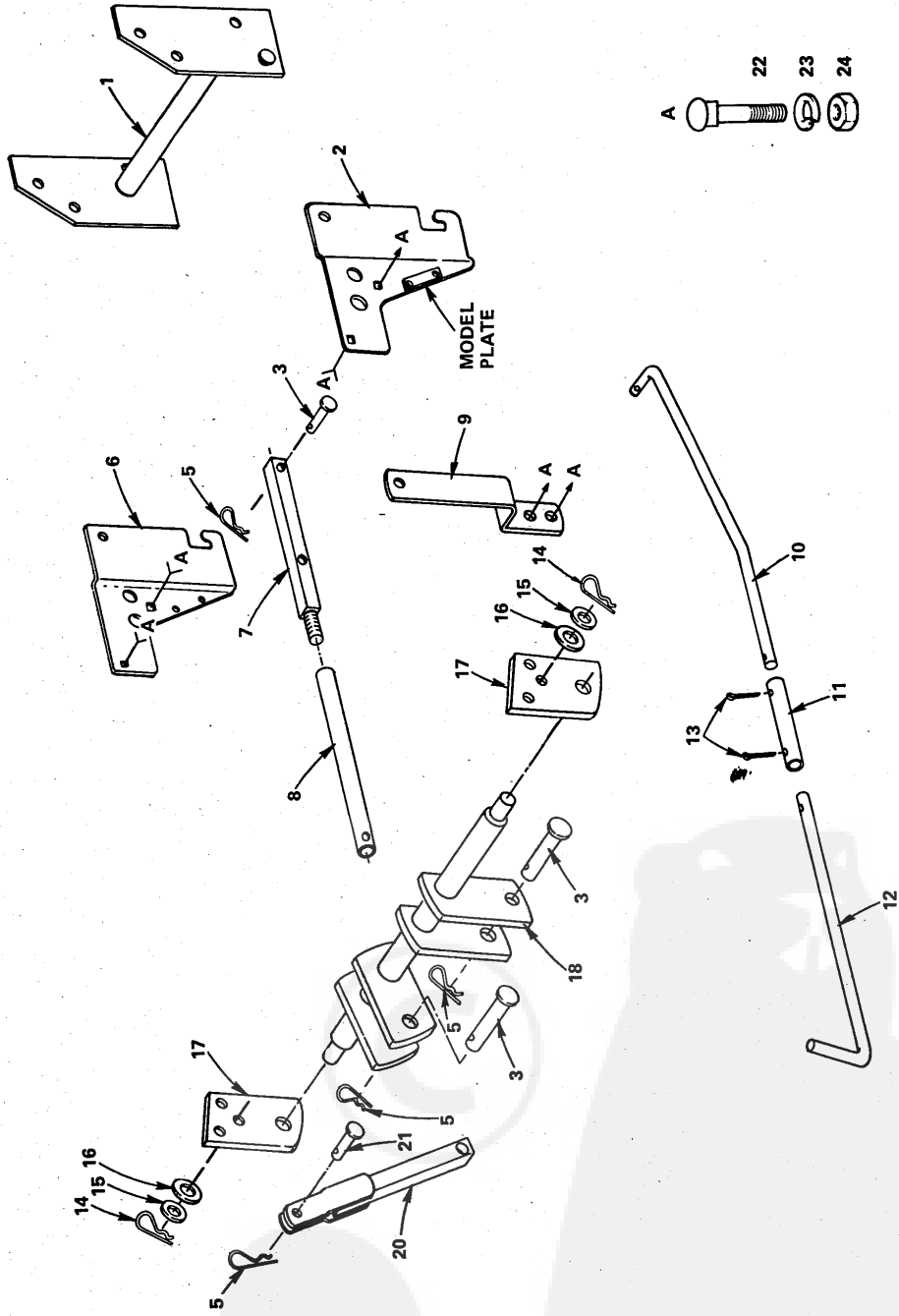
DIVISION OF ROPER CORPORATION

1905 WEST COURT STREET
KANKAKEE, ILLINOIS 60901



REPAIR PARTS

LIFT MECHANISM - GT 46" DOZER--MODEL NUMBER TR710AR



REPAIR PARTS

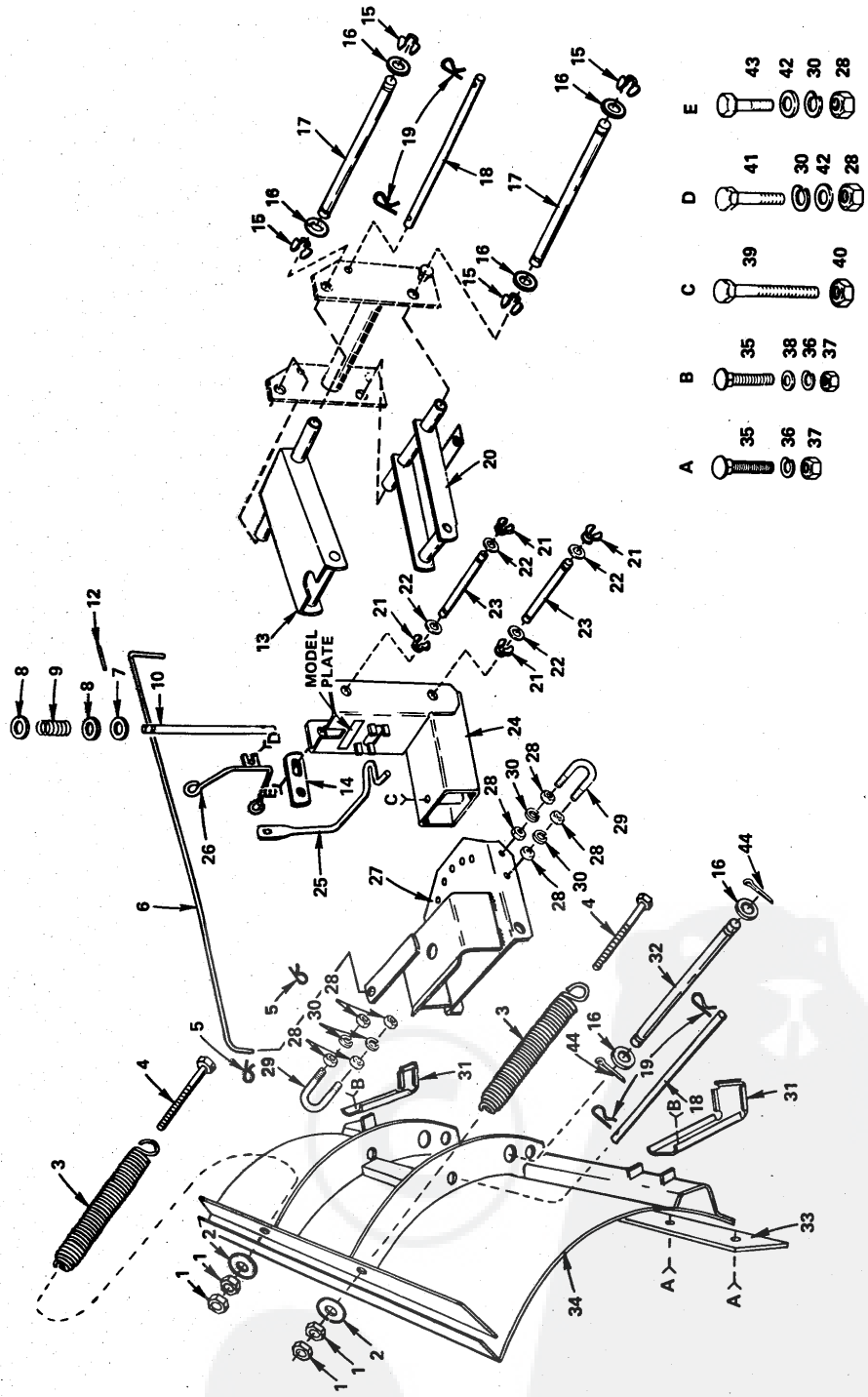
LIFT MECHANISM - GT 46' DOZER--MODEL NUMBER TR710AR

KEY NO.	PART NO.	DESCRIPTION	KEY NO.	PART NO.	DESCRIPTION
1	678H159	Bracket Assy. - Mounting Dozer	14	4940M	Retainer Spring
2	104859X	Plate - Hitch, R.H.	15	19171616	Washer 17/32 x 1 x 16 Ga.
3	3170J	Pin - Clevis	16	19172410	Washer 17/32 x 1 - 1/2 x 10 Ga.
5	4939M	Retainer Spring	17	678H164	Plate - Hanger, Pivot
6	104860X	Plate - Hitch, L.H.	18	678H160	Pivot Assy. - Lift
7	678H161	Tube Assy. - Lift, Front	20	678H165	Tube Assy. - Clevis
8	104861X	Tube - Lift	21	5565J	Pin - Clevis
9	104857X	Support - Guide Assy.	22	72110608	Bolt - Carriage Sq. Nk. 3/8 - 16 x 1 Gr. 5
10	104858X	Rod - Control, Latch, Front	23	10040600	* Lockwasher 3/8
11	5569J	Tube - Connect	24	73220600	* Nut - Hex 3/8 - 16
12	5568J	Rod - Control, Latch, Rear	..	104856X	Owners Manual
13	76020312	* Pin - Cotter 3/32 x 3/4			

*STANDARD HARDWARE--PURCHASE LOCALLY

REPAIR PARTS

46 INCH DOZER--MODEL NUMBER TR700AR



REPAIR PARTS

46 INCH DOZER--MODEL NUMBER TR700AR

KEY NO.	PART NO.	DESCRIPTION	KEY NO.	PART NO.	DESCRIPTION
1	73220800	*Nut - Hex 1/2 - 13	24	677H984	Boot Assembly
2	19171616	Washer 17/32 x 1 x 16 Ga.	25	3125J	Lever - Latch, Blade
3	9466R	Spring - Trip	26	677H387	Guide Assembly, Rod
4	74300888	Bolt - Hex 1/2 - 13 x 5 - 1/2	27	674H227	Bracket Assembly - Mounting Blade
5	4939M	Retainer Spring	28	73220600	*Nut - Hex 3/8 - 16
6	104584X	Rod - Control, Blade	29	9463R	U-Bolt
7	19212113	Washer 21/32 x 1 - 5/16 x 13 Ga.	30	10040600	*Lockwasher 3/8
8	19211612	Washer 21/32 x 1 x 12 Ga.	31	677H197	Shoe
9	9638R	Compression Spring	32	673H195	Shaft - Trip
10	3124J	Pin - Latch	33	677H196	Bar - Scraper
12	7836M	Roll Pin	34	673H188	Blade Assembly
13	677H983	Channel Assembly	35	72270508	Bolt - Carriage 5/16 - 18 x 1 Gr. 5
14	4070J	Clip - Lever, Latch	36	10040500	*Lockwasher 5/16
15	12000034	Klip Ring	37	73220500	*Nut - Hex 5/16 - 18
16	19252016	Washer 25/32 x 1 - 1/4 x 16 Ga.	38	19111116	Washer 11/32 x 11/16 x 16 Ga.
17	3116J	Shaft - Pivot, Rear	39	74761072	Bolt - Hex 5/8 - 11 x 4 - 1/2
18	3134J	Rod - Mounting	40	73681000	Nut - Crownlock 5/8 - 11
19	4940M	Retaining Spring	41	74760620	*Bolt - Hex 3/8 - 16 x 1 - 1/4
20	677H719	Channel Assembly - Lift	42	19131316	*Washer 13/32 x 13/16 x 16 Ga.
21	12000008	Klip Ring	43	74760616	*Bolt - Hex 3/8 - 16 x 1
22	19212016	Washer 21/32 x 1 - 1/4 x 16 Ga.	44	76020624	Pin - Cotter 3/16 x 1 - 1/2
23	3111J	Shaft - Pivot, Front			

*STANDARD HARDWARE--PURCHASE LOCALLY

TR 710BR

SUPPLEMENT SHEET

FORM No.	43972 (6/86)
DATE	June 9, 1986
SUBJECT	Revisions on pages 12 and 13. 46" Dozer Blade Attachment TR710BR.

USE THIS SUPPLEMENT SHEET INSTEAD OF YOUR OWNER'S MANUAL, FOR PAGES 12 AND 13 ONLY.

Key numbers and part numbers 7, 9, 17 and 20 have been revised to work on new and prior to 1986 tractor models. Refer to pages 12 and 13 of this supplement. Keep this supplement in a safe place for ordering repair parts in the future.

ROPER

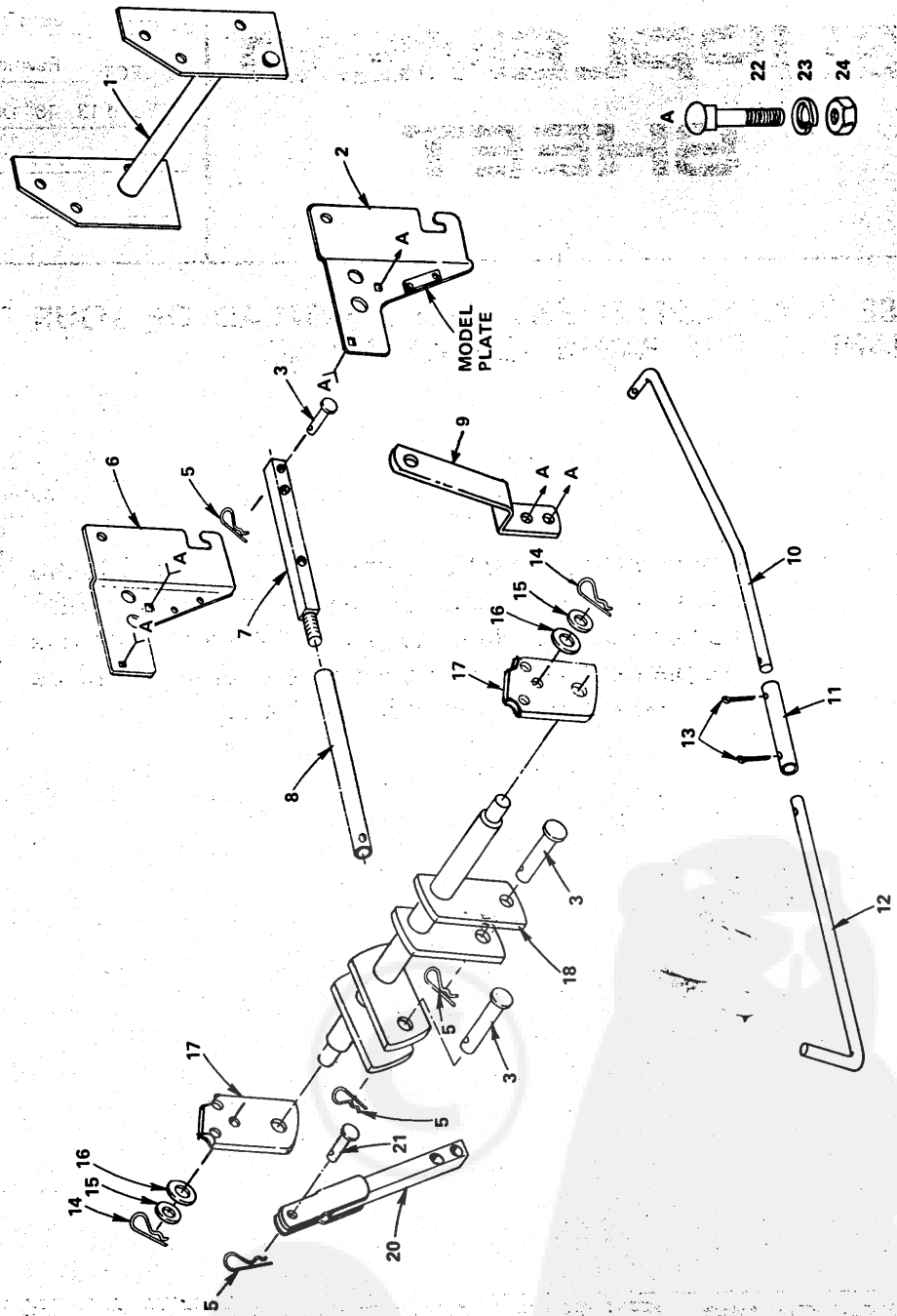
OUTDOOR POWER PRODUCTS

DIVISION OF ROPER CORPORATION

PRINTED IN U.S.A.

REPAIR PARTS

LIFT MECHANISM - GT 46" DOZER-MODEL NUMBER TR710BR



REPAIR PARTS

LIFT MECHANISM - GT 46" DOZER-MODEL NUMBER TR710BR

KEY NO.	PART NO.	DESCRIPTION	KEY NO.	PART NO.	DESCRIPTION
1	678H159	Bracket Assy. - Mounting Dozer	14	4940M	Retainer Spring
2	104859X	Plate - Hitch, R.H.	15	19171616	Washer 17/32 x 1 x 16 Ga.
3	3170J	Pin - Clevis	16	19172410	Washer 17/32 x 1-1/2 x 10 Ga.
5	4939M	Retainer Spring	17	23435	Plate - Hanger, Pivot
6	104860X	Plate - Hitch, L.H.	18	678H160	Pivot Assy. - Lift
7	62437	Tube Assy. - Lift, Front	20	62436	Tube Assy. - Clevis
8	104861X	Tube - Lift	21	5565J	Pin - Clevis
9	23436	Support - Guide Assy.	22	72110608	Bolt - Carriage Sq. Nk. 3/8-16 x 1 Gr. 5
10	104858X	Rod - Control, Latch, Front	23	10040600	* Lockwasher 3/8
11	5569J	Tube - Connect	24	73220600	* Nut - Hex 3/8-16
12	5568J	Rod - Control, Latch, Rear	...	104856X	Owners Manual
13	76020312	* Pin - Cotter 3/32 x 3/4			

*STANDARD HARDWARE—PURCHASE LOCALLY