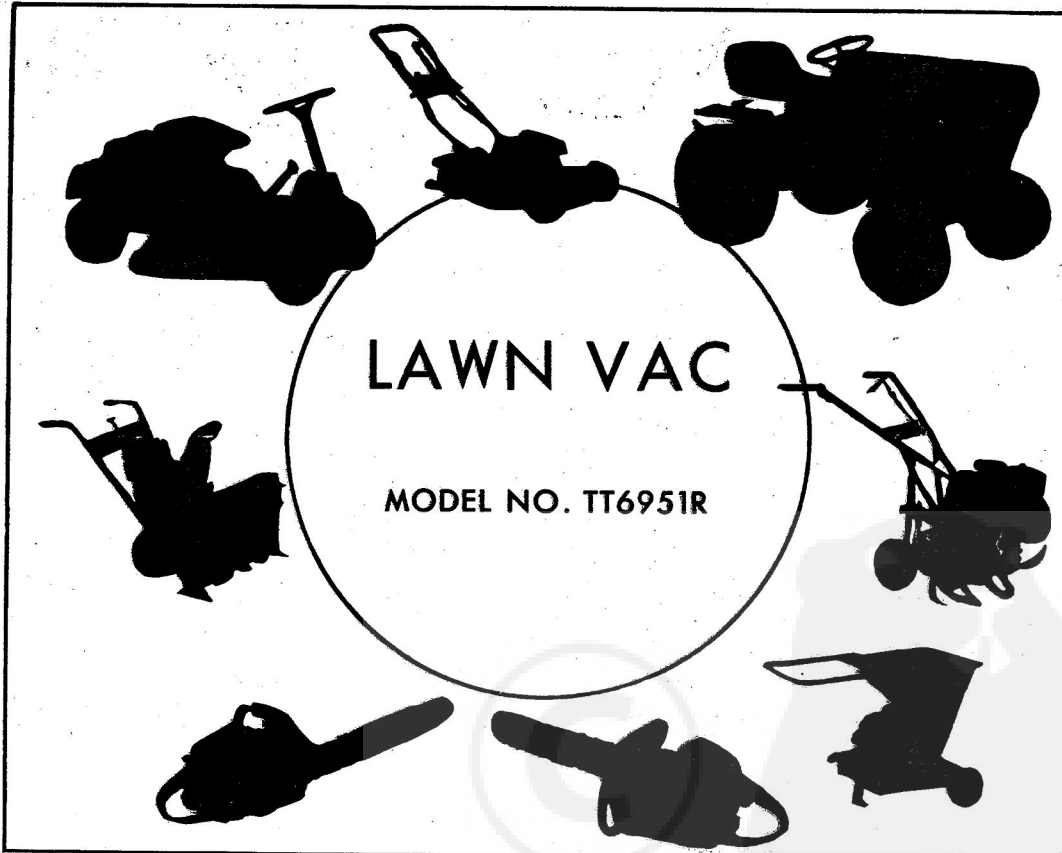


**ROPER**

**OUTDOOR POWER EQUIPMENT  
OWNER'S MANUAL**



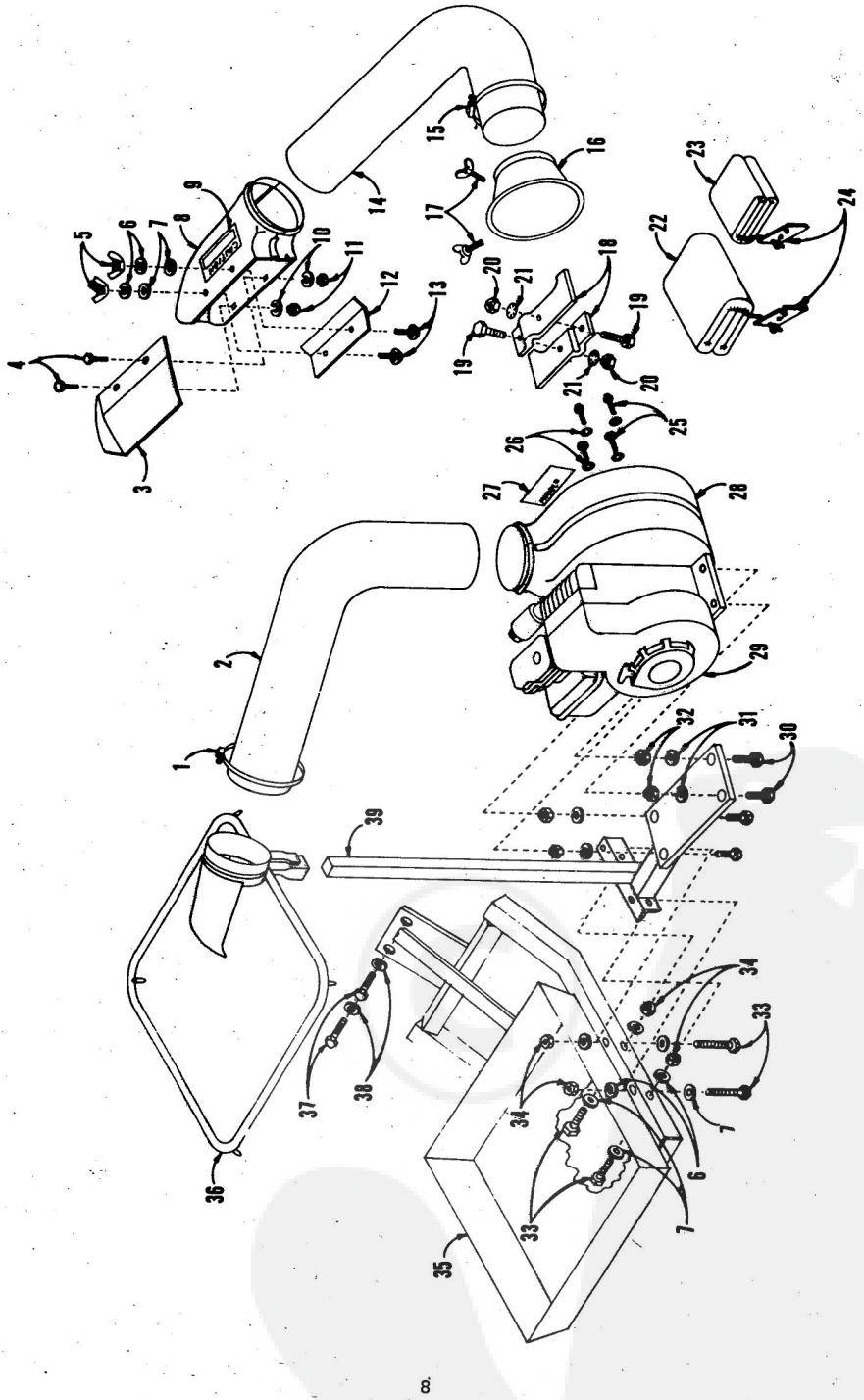
**CAUTION:** Read rules for safe operation and all instructions carefully.

- ASSEMBLY
- OPERATING
- MAINTENANCE
- REPAIR PARTS

ROPER SALES CORP.

10189JA-8.74

1905 W. COURT ST. / KANKAKEE, ILLINOIS 60901



LAWN VAC Model Number 258.264180

KEY NO.	PART NUMBER 258.264180	DESCRIPTION	REQ'T
1	B 96 H	Hose Clamp 6"	1
2	025 - 04	Flex Hose 40" Long	1
3	59	Deflector Plate	1
4	STD 532505	¼ - 20 x ½ Carriage Bolt	2
5	5515	3/8" Wing Nut	2
6	STD 551137	3/8" Med. Lockwasher	6
7	STD 551037	3/8" Med. Plain Washer	6
8	B - 48	Mower Deck Boot	1
9	58	Decal, Caution	1
10	STD 551125	¼" Med. Lockwasher	2
11	STD 541025	¼ - 20 Hex Nut	2
12	63	Boot Clamp Plate	1
13	STD 533710	3/8 - 16 x 1 Carriage Bolt	2
14	024 - 04	Flex Hose 32" Long	1
15	B - 116 - H	Hose Clamp 7"	1
16	20 - 7	Blower Cone	1
17	64	5/16 - 18 x 1½ Thumb Screw	2
18	21	Blower Blade	2
19	STD 525015	½ - 13 x 1½ Hex Bolt	2
20	STD 541050	½ - 13 Hex Nut	2
21	STD 551250	½" Internal Tooth Lockwasher	2
22	48	Canvas Bag	1
23	49	Canvas Bag Cover	1
24	56	Pull Cord Fastener	2
	51	24 x 24 x 48 Plastic Bag	1
25	STD 623107	5/16 - 24 x 7/8 Hex Bolt	4
26	STD 551231	5/16 Internal Tooth Lockwasher	4
27	57	Decal, Model No.	1
28	19	Blower Housing	1
29	80232	3 HP Briggs & Stratton Engine Model 80232 Type 0675 - 01	1
30	STD 253115	5/16 - 18 x 1½ Hex Bolt	4
31	STD 551131	5/16 Med. Lockwasher	4
32	STD 541031	5/16 - 18 Hex Nut	4
33	STD 523722	3/8 - 16 x 2¼ Hex Bolt	4
34	STD 541037	3/8 - 16 Hex Nut	4
35	B - 1 - 10	Tray and Mount Assembly	1
36	B - 19 - 24	Bag Support Ring	1
37	STD 525010	½ - 13 x 1 Hex Bolt	2
38	STD 551150	½ - Med. Lockwasher	2
39	B - 11 - 18	Engine Support and Upright	1
40	10189J - 8.74	Owners Manual (Not Illustrated)	1