

Parts catalogue

LAWN MOWER

(EXPORT MODEL)

GRH535PRO(2Action)

MODEL	CODE
GRH535PRO	0276-

CONTENTS

Fig. 1 GEAR CASE -----	1
Fig. 2 GEAR CASE INSIDE, OUTSIDE-----	3
Fig. 3 SAFETY COVER -----	5
Fig. 4 WHEEL -----	7
Fig. 5 HANDLE -----	11
Fig. 6 BLADE AND BAG -----	13

OREC CO.,LTD

Update : April 2009

Fig.1 Gear Case

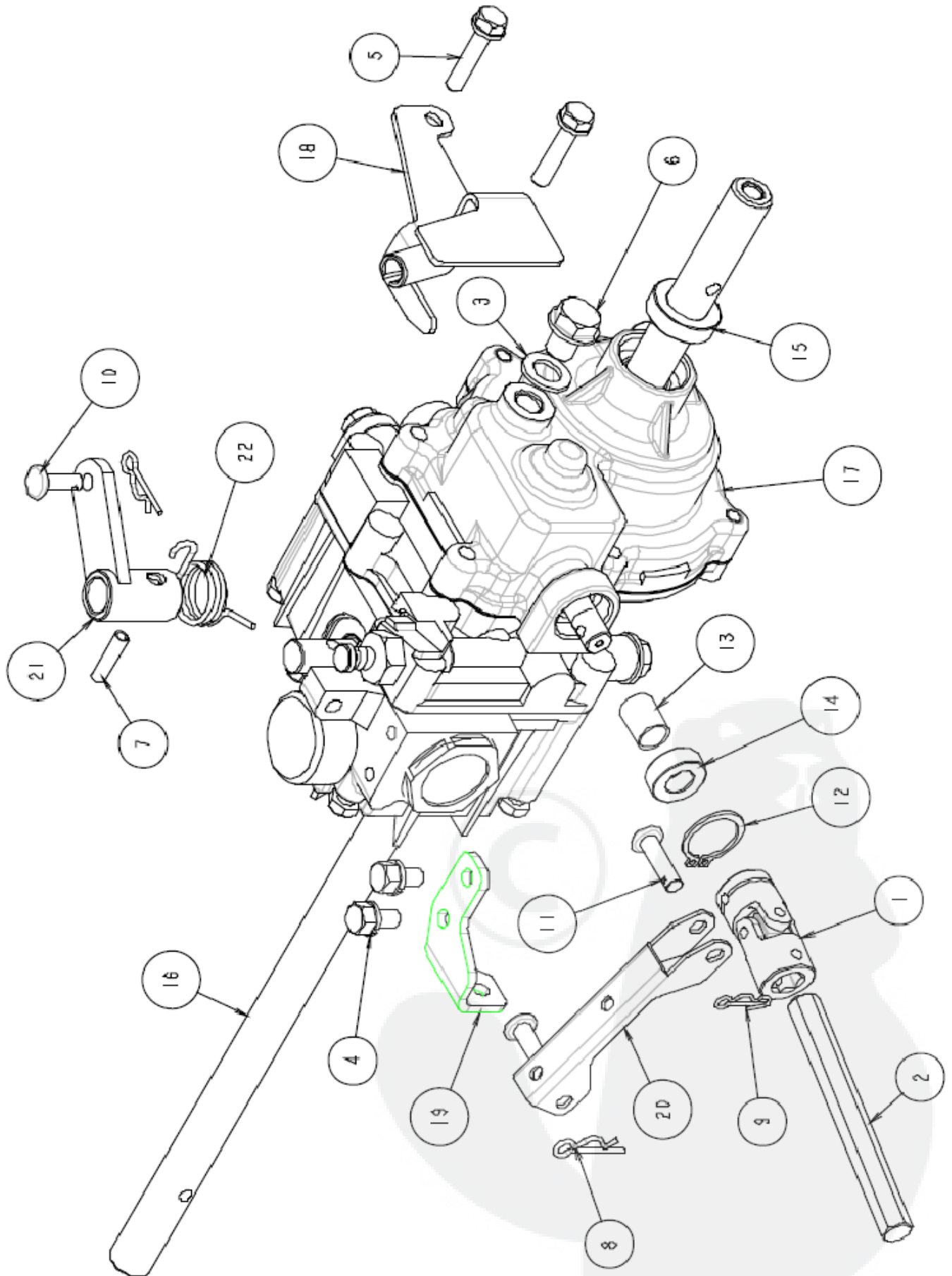


Fig.1 Gear Case

Ref.	Parts No.	Parts Name	Quantity		Remarks
			GRH535 PRO (2Action)		
			GXV160		
	0276-00010	Gear Case Assy	1		*2)
	0276-00020	Gear Case Assy	1		*1) 3)
1	80-1020-515-00	Universal Joint NC-10-37C1	1		
2	80-1020-526-00	Drive Shaft H 136L	1		
3	83-1020-349-00	Copper Packing 10.5*18*1.6	2		
4	89-1132-060122	Hexagonal Bolt (SW) M6*12	2		
5	89-1135-060302	Hexagonal Bolt (SW) M6*30	2		
6	89-1252-100123	Flange Mini Hexagonal Bolt M10*12	2		
7	89-2111-050020	Spring Pin 5*20	1		
8	89-2131-080002	Snap Pin 8	1		
9	89-2132-060002	Snap Pin 6 (with stopper)	1		
10	89-2181-060162	Flat Head Pin 6*16	1		
11	89-2181-060222	Flat Head Pin 6*22	2		
12	89-2511-000200	Snap Ring (S20)	1		
13	89-3512-010200	DBB Bush 10.20	1		
14	89-5121-102007	Oil Seal UE 10.20.7	3		
15	89-5121-152507	Oil Seal UE 15.25.7	2		
16	0276-00100	Axle	1		
17	0276-00410	Gear Case (G)	1		*2)
	0276-00420	Gear Case (G)	1		*3)
18	0276-01510	Clutch Bracket CMP	1		
19	0276-01610	Lock Arm Bracket (H) CMP	1		
20	0276-01710	Driving Clutch Arm	1		
21	0276-01810	Driving Change Arm	1		
22	0276-01900	Spring for Change Arm Return	1		

MEMO

Note 1: Transmission ASSY consists from parts 1, 3 to 8,11 to 22(this page) and 1 to 3, 5 to 14(next page).

***1) Interchangeable**

***2) Serial Number : GRH535PRO : ~VG07M02404**

***3) Serial Number : GRH535PRO : VG08G00147~**

***4) Serial Number : GRH535PRO : ~VG08G00266**

***5) Serial Number : GRH535PRO : VG08K00837~**

Fig.2 Gear Case

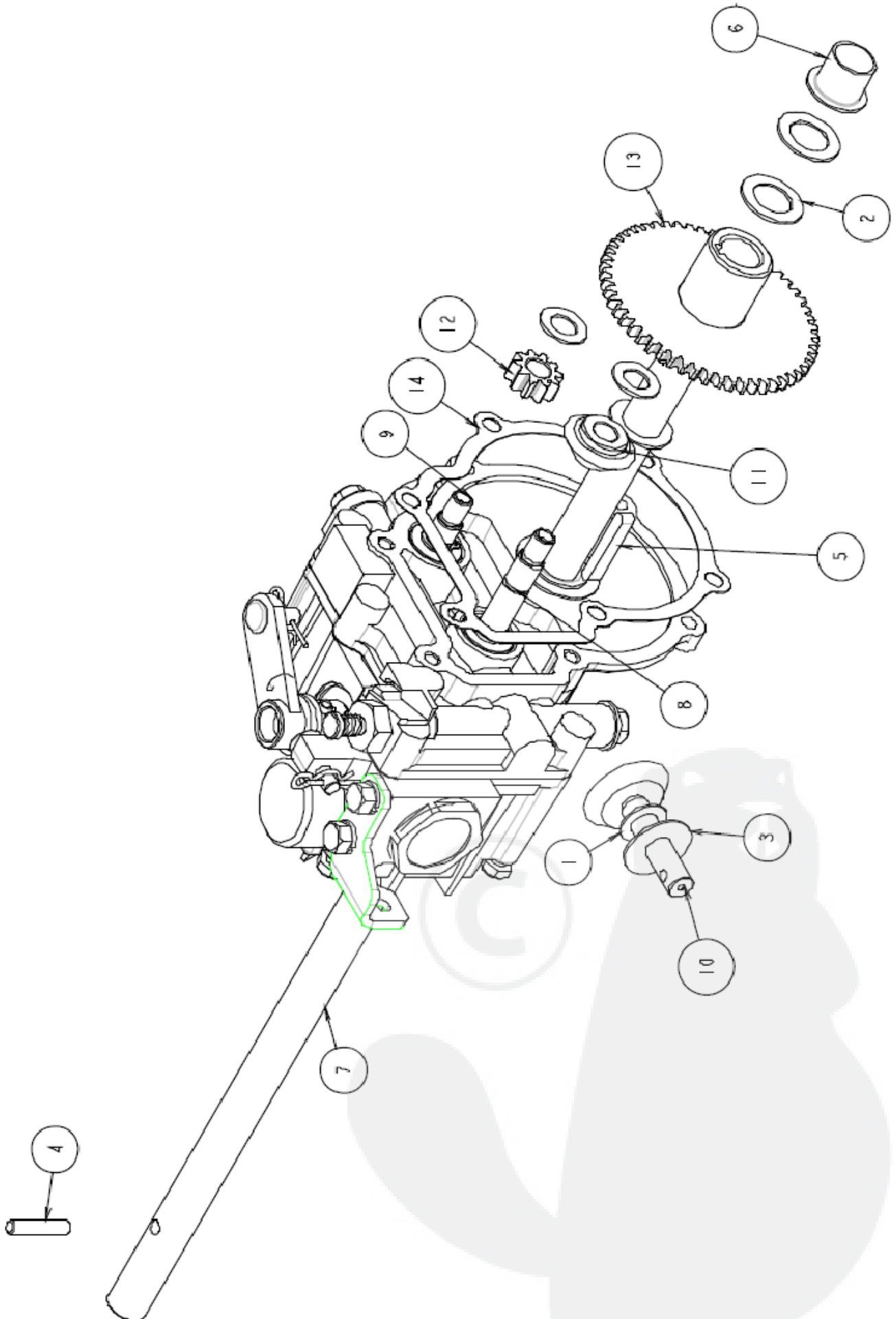


Fig 2 Gear Case

Ref.	Parts No.	Parts Name	Quantity	Remarks
			GRH535 PRO (2Action)	
			GXV160	
1	83-1020-351-00	Thrust Washer 10*18*1.0	3	
2	83-1020-361-00	Thrust Washer 15*24*1.0	4	
3	83-1830-353-00	Thrust Washer 10*26*1.0	1	
4	89-2142-050250	Parallel Pin 5*25	2	
5	89-2150-050330	Key 5*33 (round)	1	
6	89-3511-015150	DU Bush 15.15.23F	2	
7	0276-00100	Axle	1	
8	0276-00600	P Shaft	1	
9	0276-00700	M Shaft	1	
10	0276-00810	Bevel Gear 25T	1	
11	0276-00900	Bevel Gear 20T	1	
12	0276-01100	Gear 10T	1	
13	0276-01200	Gear 54T CMP	1	
14	0276-70410	Packing G	1	*2)
	0276-70420	Packing G	1	*3)



Fig.3 Safety Cover

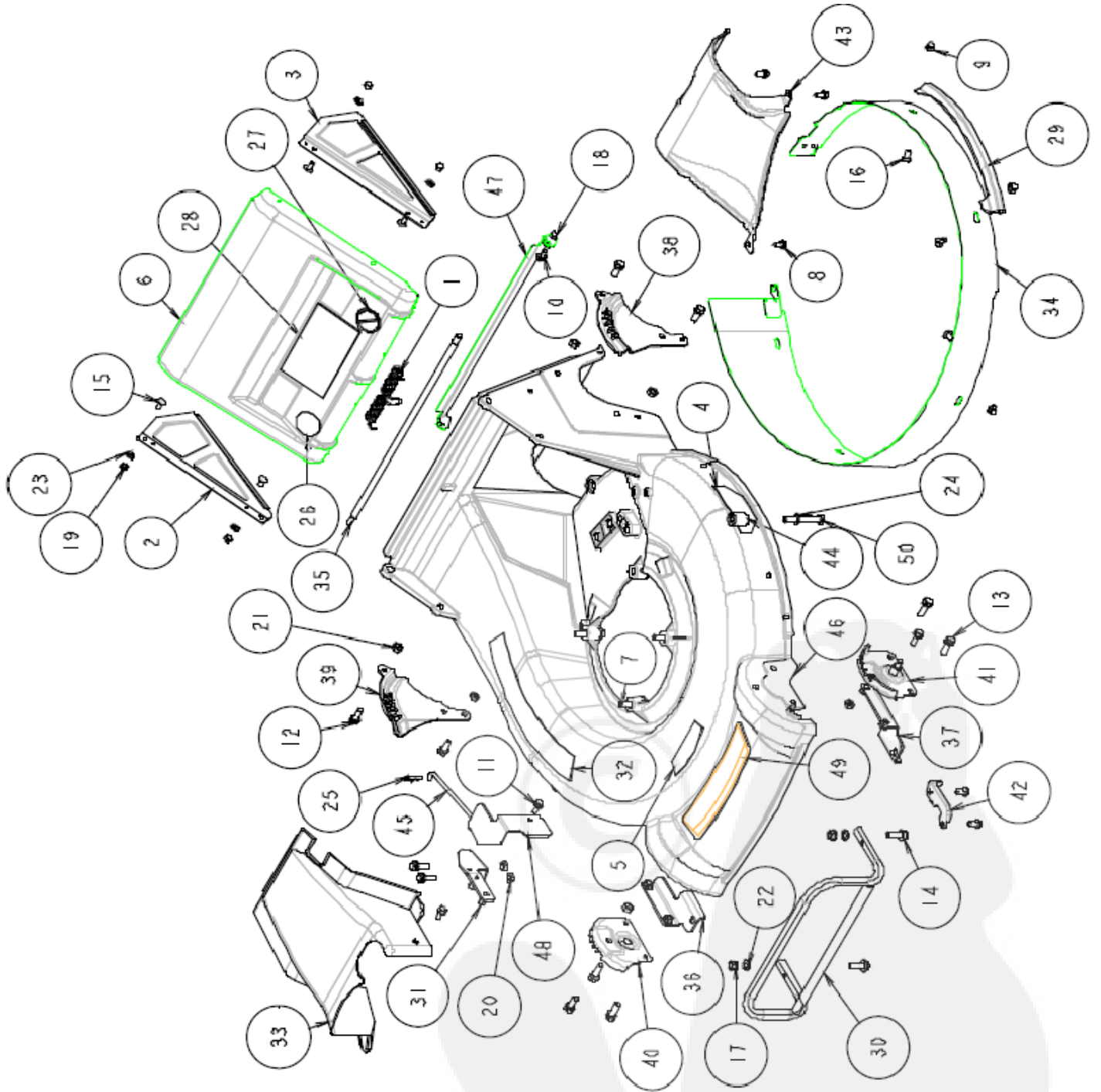


Fig 3 Safety Cover

Ref.	Parts No.	Parts Name	Quantity	Remarks
			GRH535 PRO (2Action)	
			GXV160	
1	80-1020-753-00	Rear Cover Spring	1	
2	80-1020-754-20	Side Plate (Left)	1	
3	80-1020-755-20	Side Plate (Right)	1	
4	80-1020-926-00	Danger Label	2	
5	80-1020-928-00	Notice Label (Plug)	1	
6	0278-50800	Rear Cover	1	
7	83-1020-116-00	Hexagonal Bolt 5/16-24*45UNF (H)	3	
8	83-1020-148-00	Tapping Bolt M6*14	5	
9	83-1575-189-00	Flange Cap Nut M6	5	
10	89-1132-060122	Hexagonal Bolt (SW) M6*12	2	
11	89-1139-060163	Hexagonal Bolt (PWSW) M6*16	2	
12	89-1232-080203	Mini Hexagonal Bolt (SW) M8*20	6	
13	89-1232-080252	Mini Hexagonal Bolt (SW) M8*25	6	
14	89-1253-080252	Flange Mini Hexagonal Bolt (8T) M8	2	
15	89-1390-060123	Welded Bolt M6*12	4	
16	89-1390-060142	Welded Bolt M6*14	5	
17	89-1543-080002	Mini Hexagonal Nut (SW) M8	2	
18	89-1571-060042	Cap Nut M6	2	
19	89-1571-060043	Cap Nut M6	4	
20	89-1611-080042	Mini Hexagonal Nut M8	2	
21	89-1611-080043	Mini Hexagonal Nut M8	10	
22	89-1712-080002	Flat Washer 8	2	
23	89-1750-060003	Spring Washer 6	4	
24	89-1750-080003	Spring Washer 8	4	
25	89-2131-080002	Snap Pin 8	1	
26	0215-83200	Label, Protection Equipment	1	
27	0223-72910	Attention Mark for Slope	1	
	0223-72910	Attention Mark for Slope	1	*1)
28	0223-76100	Label, Caution (Large)	1	
29	0230-20700	Side Guard	2	
30	0230-20800	Front Bumper CMP	1	
31	0276-60100	Lock Arm Bracket CMP	1	
32	0276-71800	Label, (HYDROSTATIC)	1	
33	80-1022-733-10	Gear Case Cover (H)	1	
34	0278-20600	Inside Guard CMP	1	
35	0278-20700	Rear Cover Shaft	1	
36	0278-21200	Front Bumper Setting Plate (L)	1	
37	0278-21300	Front Bumper Setting Plate (R)	1	
38	0278-30300	Rear Wheel Adjusting Plate (L) 8inch	1	
	0276-30300	Rear Wheel Adjusting Plate (L) 9inch		
39	0278-30400	Rear Wheel Adjusting Plate (R) 8inch	1	
	0276-30400	Rear Wheel Adjusting Plate (R) 9inch		
40	0278-30800	Front Wheel Adjusting Plate (R)	1	
41	0278-30700	Front Wheel Adjusting Plate (L)	1	
42	0278-50300	Blade Wire Setting	1	
43	0278-50400	Guide 535	1	
44	0278-50500	Collar for Engine Setting	1	
45	0276-50100	Lock Arm	1	
46	0278-51100	Cover Pro (Body) 535	1	
47	0278-51600	Extension Flapper	1	
48	0278-60100	Shaft Cover	1	
49	0278-70400	Label (Large)	1	
50	0278-70800	Bolt 5/16-24*63UNF (H)	1	

Fig.4 Wheel

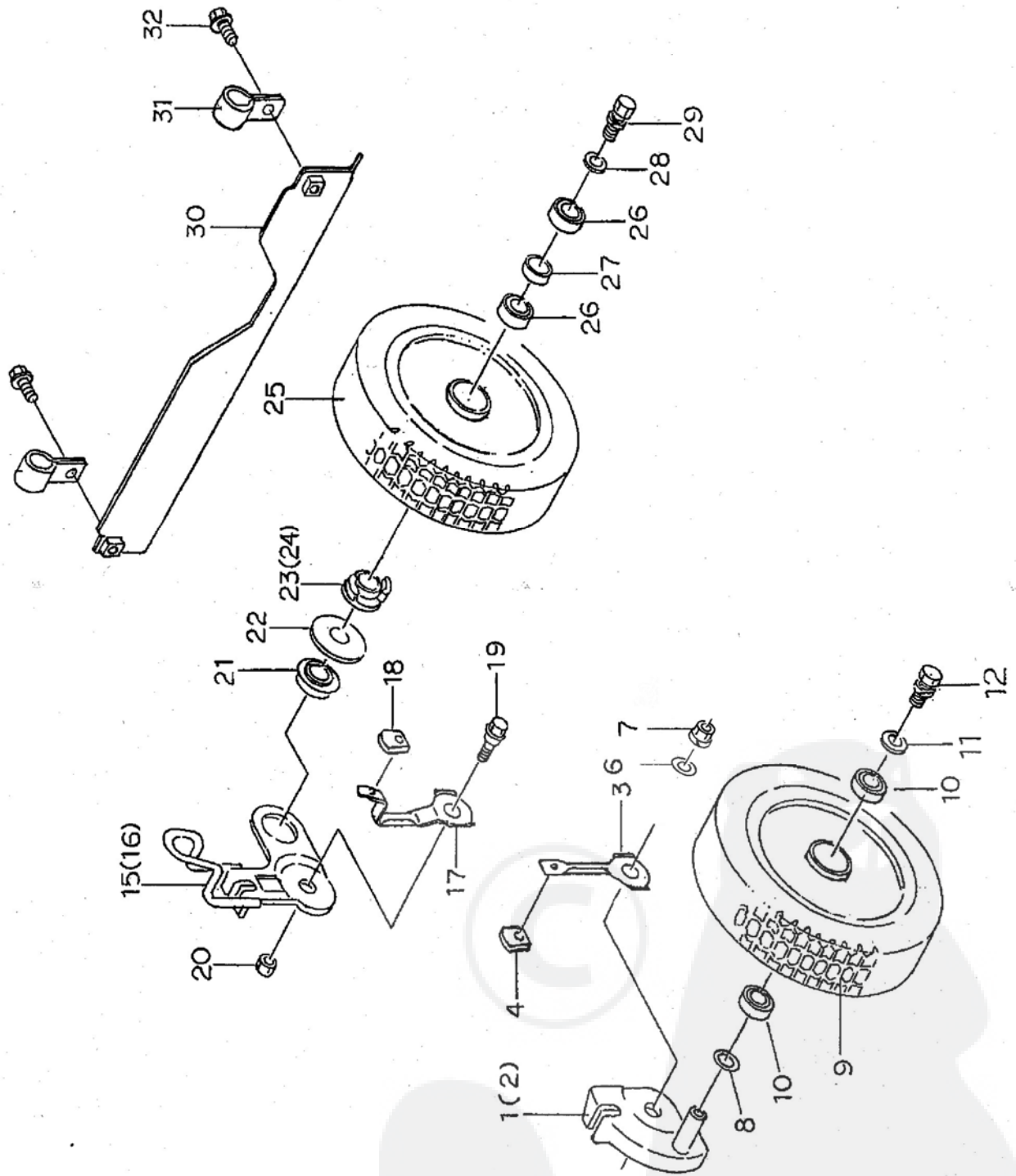


Fig 4 Wheel

Ref.	Parts No.	Parts Name	Quantity		Remarks
			GRH535 PRO (2Action)		
			GXV160		
1	0278-30500	Front Wheel Arm (L) 8inch	1		
	0276-30500	Front Wheel Arm (L) 9 inch	1		
2	0278-30600	Front Wheel Arm (R) 8inch	1		
	0276-30600	Front Wheel Arm (R) 9 inch	1		
3	80-1022-424-00	Front Wheel Arm Stopper	2		
4	80-1020-426-10	Adjuster Grip	2		
6	89-1713-080003	Flat Washer 8 (large)	2		
7	89-1543-080003	Mini Hexagonal Nut (SW) M8	2		
8	83-1020-361-00	Thrust Washer 15*24*1.0	2		
9-10	80-1020-481-00	Steel Front Wheel Assy (OLD)	2		*4)
	0278-33700	Steel Front Wheel Assy 8 inch (NEW)	2		*5)
	0276-31700	Steel Front Wheel Assy 9 inch (NEW)	2		
9	80-1020-483-00	Steel Front Wheel CMP (OLD)	2		*4)
	0278-33100	Steel Front Wheel CMP 8 inch (NEW)			*5)
	0276-31100	Steel Front Wheel CMP 9 inch (NEW)			
9-1	80-1020-485-00	Rubber Wheel (OLD)			*4)
	0278-33500	Rubber Wheel 8 inch (NEW)			*5)
	0276-31500	Rubber Wheel 9 inch (NEW)			
9-2	80-1020-487-00	Steel Front Wheel (OLD)			*4)
	0278-33300	Steel Front Wheel 8 inch (NEW)			*5)
	0276-31300	Steel Front Wheel 9 inch (NEW)			
10	89-3115-062024	Bearing 6202 2RS	4		
11	89-1713-080003	Flat Washer 8 (large)	2		
12	89-1132-080203	Hexagonal Bolt (SW) M8*20	2		
15	0278-30100	Rear Wheel Arm (Left)	1		
16	0278-30200	Rear Wheel Arm (Right)	1		
17	80-1022-425-00	Rear Wheel Arm Stopper	2		
18	80-1020-426-10	Adjuster Grip	2		
19	80-1020-406-10	Arm Bolt	2		
20	89-1561-080003	Mini Hexagonal U Nut M8	2		
21	83-1020-987-00	Bearing ND-0.2	2		
22	80-1020-433-00	Coned Disc Spring	2		
23	80-1020-458-00	Ratchet Assembly (Left)	1		
24	80-1020-459-00	Ratchet Assembly (Right)	1		
25-27	80-1020-482-00	Steel Rear Wheel Assy (OLD)	2		*4)
	0278-33800	Steel Rear Wheel Assy 8 inch (NEW)	2		*5)
	0276-31800	Steel Rear Wheel Assy 9 inch (NEW)	2		
25	80-1020-484-00	Steel Rear Wheel CMP (OLD)	2		*4)
	0278-33200	Steel Rear Wheel CMP 8 inch (NEW)			*5)
	0276-31200	Steel Rear Wheel CMP 9 inch (NEW)			
25-1	80-1020-485-00	Rubber Wheel (OLD)			*4)
	0278-33500	Rubber Wheel 8 inch (NEW)			*5)
	0276-31500	Rubber Wheel 9 inch (NEW)			
25-2	80-1020-488-00	Steel Rear Wheel (OLD)			*4)
	0278-33400	Steel Rear Wheel 8 inch (NEW)			*5)
	0276-31400	Steel Rear Wheel 9 inch (NEW)			
26	89-3115-062024	Bearing 6202 2RS	4		
27	80-1020-486-00	Collar 25A*8L	2		
28	89-1713-080003	Flat Washer 8 (large)	2		
29	89-1132-080203	Hexagonal Bolt (SW) M8*20	2		

Fig.4 Wheel

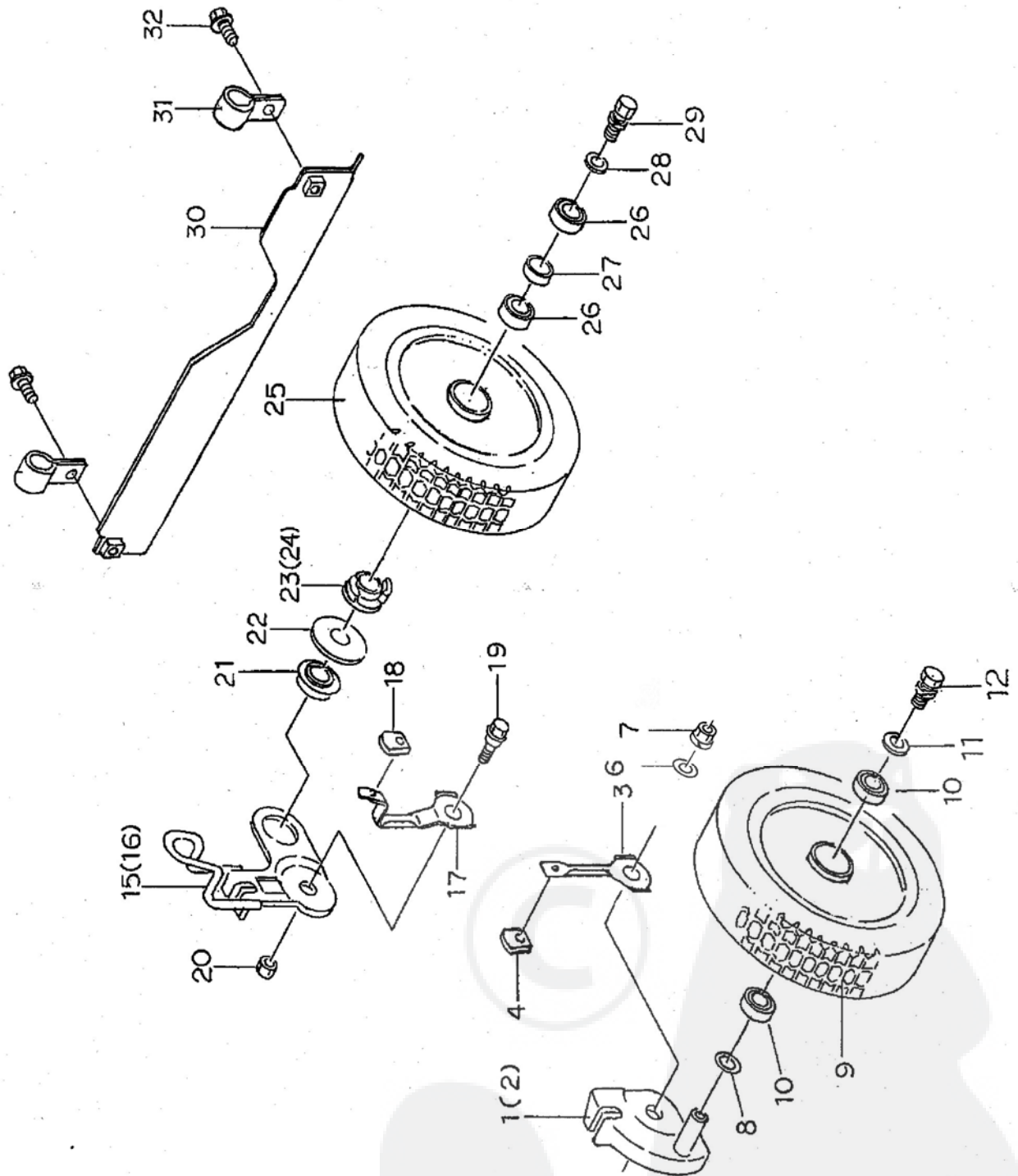


Fig 4 Wheel

Ref.	Parts No.	Parts Name	Quantity	Remarks
			GRH535 PRO (2Action)	
			GXV160	
30	0276-50600	Flapper CMP	1	
31	80-1020-793-10	Flapper Setting	2	
32	89-1133-060163	Hexagonal Bolt (PWSW) M6*16	2	

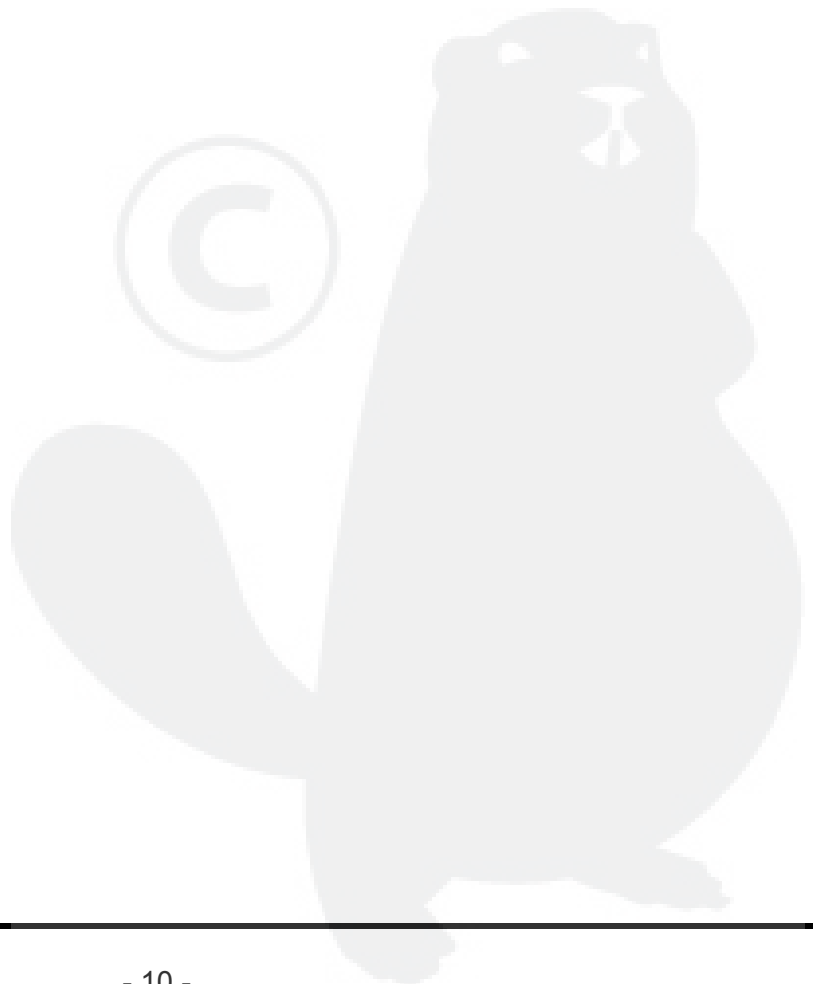
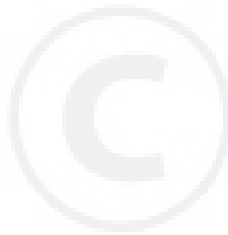


Fig.5 Handle

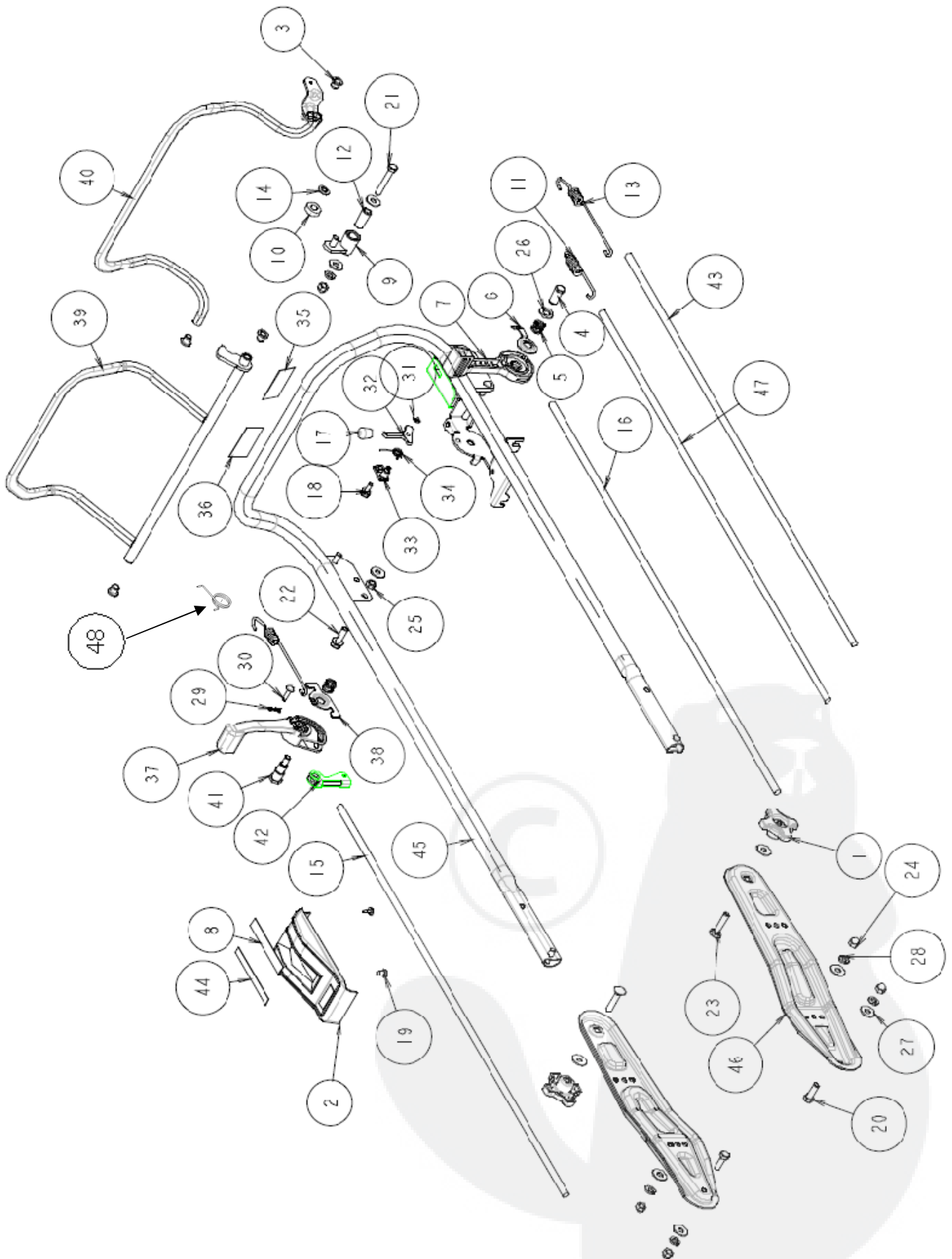


Fig.5 Handle

Ref.	Parts No.	Parts Name	Quantity	Remarks
			GRH535 PRO (2Action)	
			GXV160	
1	80-1020-228-10	Knob Nut M8	2	
2	80-1020-231-00	Control Cover	1	
3	80-1020-243-00	Driving Lever, Metal	4	
4	80-1020-262-00	Control Lever Shaft	1	
5	80-1020-263-00	Control Lever Shaft Spring	2	
6	80-1020-264-00	Control Washer	1	
7	80-1020-265-00	Throttle Lever (H)	1	
8	80-1020-913-10	Throttle Label (H)	1	
9	80-1021-252-00	Blade Wire Arm	1	
10	80-1021-253-00	Roller	1	
11	80-1021-968-10	Blade Spring VB	1	
12	80-1022-254-00	Inner Pipe 13.8*30	1	
13	80-1022-966-10	Driving Clutch Spring	2	
14	83-1020-395-00	Shim Washer 8*12*0.8	1	
15	0276-71500	Driving Change Wire V	1	
16	83-1020-955-00	Throttle Wire (H)	1	
17	83-1920-425-00	Lever Grip KP204	1	
18	89-1139-060163	Hexagonal Bolt (PWSW) M6*16	1	
19	89-1161-050123	Tapping Screw 5*12	2	
20	89-1213-080252	Mini Hexagonal Bolt (8T) M8*25	2	
21	89-1213-080503	Mini Hexagonal Bolt (8T) M8*50	1	
22	89-1239-080302	Mini Hexagonal Bolt (PWSW) M8*3	1	
23	89-1412-080403	Handle Setting Bolt M8*40	2	
24	89-1571-080043	Cap Nut M8	5	
25	89-1711-080003	Flat Washer 8	1	
26	89-1711-120003	Flat Washer 12	1	
27	89-1713-080003	Flat Washer 8 (large)	9	
28	89-1750-080003	Spring Washer 8	5	
29	89-2132-060002	Snap Pin 6 (with stopper)	1	
30	89-2181-060222	Flat Head Pin 6*22	1	
31	89-2521-000050	E Type Ring 5	1	
32	0230-10400	Lock Lever	1	
33	0230-10500	Lock Lever Shaft CMP	1	
34	0230-70700	Spring for Lock Lever Return	1	
35	0230-71200	Blade Label	1	
36	0230-71300	Driving Label	1	
37	0276-10110	Change Lever	1	
38	0276-10200	Change Plate	1	
39	0276-10300	Blade Clutch Lever	1	
40	0276-10400	Driving Clutch Lever	1	
41	0276-10510	Bolt for Change Lever Setting	1	
42	0276-10600	Wire Guide	1	
	0276-10610	Wire Guide		
43	0276-70710	Driving Clutch Wire	1	
44	0276-70800	Driving Change Label	1	With Bush 08.07
45	0278-10100	Handle PRO (φ25.4)	1	
46	0278-10200	Handle Setting	2	
47	0278-71100	Blade Wire V	1	
48	0276-11700	Spring For Change Lever Return	1	

Fig.6 Blade and Bag

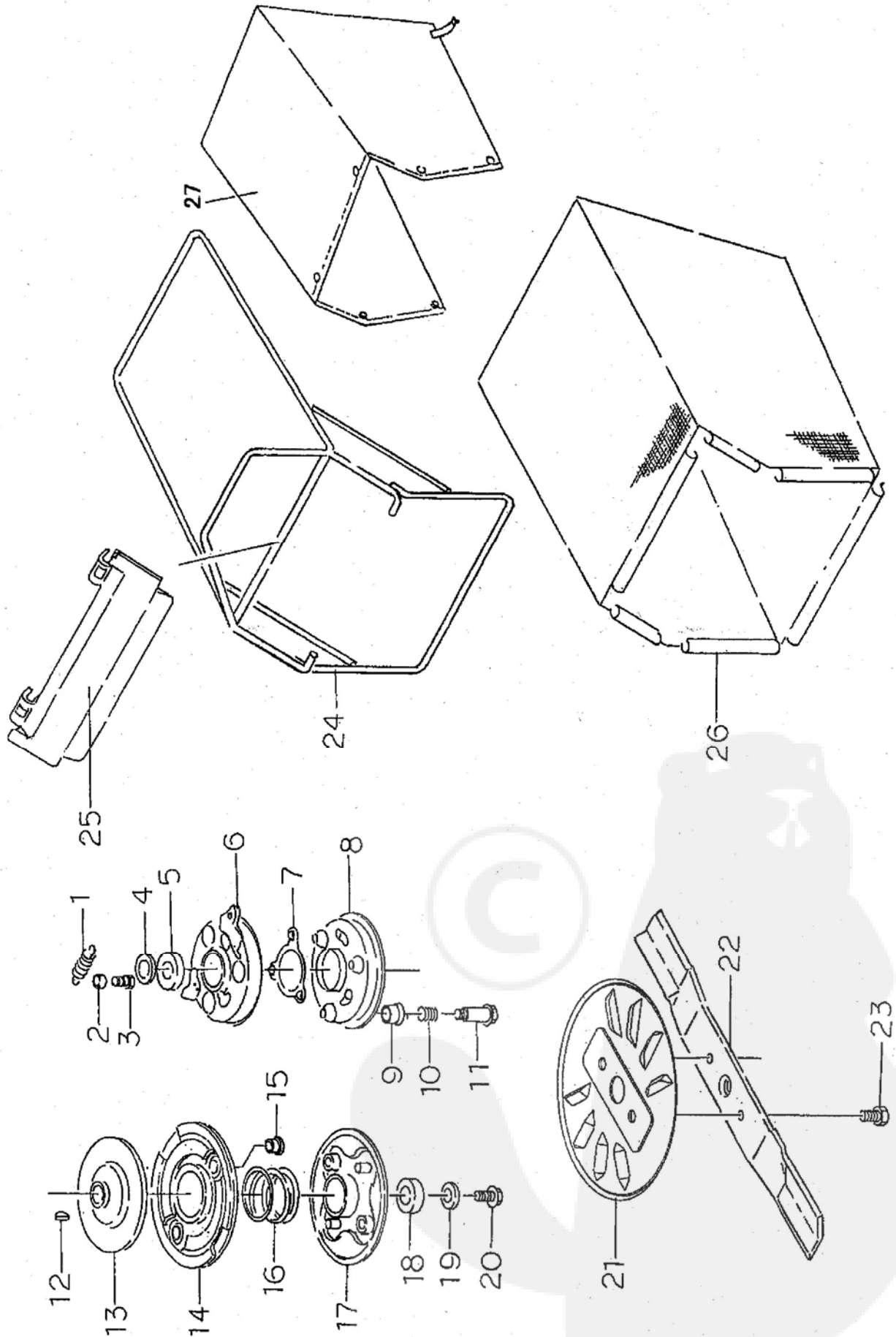


Fig 6 Blade and Bag

Ref.	Parts No.	Parts Name	Quantity	Remarks
			GRH535 PRO (2Action)	
			GXV160	
1	80-1020-871-00	Clutch Return Spring (H)	2	
2	80-1020-872-00	Collar (H)	2	
3	83-1020-148-00	Tapping Bolt M6*14	2	
4	80-1020-874-00	Thrust Washer (H)	1	
5	80-1020-875-00	Ball Bearing (H)	1	
6	80-1020-876-00	Blade (H) Assy	1	
7	80-1020-877-00	Ball Retainer (H)	1	
8	80-1020-878-00	Blade Disc (H) Assy	1	
9	80-1020-879-00	Bush (H)	3	
10	80-1020-881-00	Spring (H)	3	
11	80-1020-882-00	Blade Setting Bolt (H)	3	
12	80-1020-892-00	Woodruff Key 4*16	1	
	89-2160-040160	Woodruff Key 4*16*6.5		*1)
13	80-1020-883-00	Drive Disc (H)	1	
14	80-1020-884-00	Driven Disc (H) Assy	1	
15	80-1020-885-00	Bush (H)	2	
16	80-1020-886-00	Clutch Spring (H)	1	
17	80-1020-887-00	Ball Control Plate (H) Assy	1	
18	80-1020-888-00	Ball Bearing (H)	1	
19	83-1020-323-00	Washer 10*30*4.5	1	
20	89-1254-100252	Flange Mini Hexagonal Bolt M10*25	1	
21	0222-50100	BBC Cover CMP	1	
22	80-1020-821-10	Blade 530	1	
23	89-1254-100252	Flange Mini Hexagonal Bolt M10*25	2	
24	0278-20100	Bag Flame	1	
25	80-1022-854-00	Bag Plate	1	
26	0230-70400	Bag C	1	
	80-1022-856-00	Bag C (with Hook)	1	(option)
	0278-71500	Bag DB (sew a dustproof cover)	1	(option)
27	0230-71400	Dustproof Cover	1	(option)