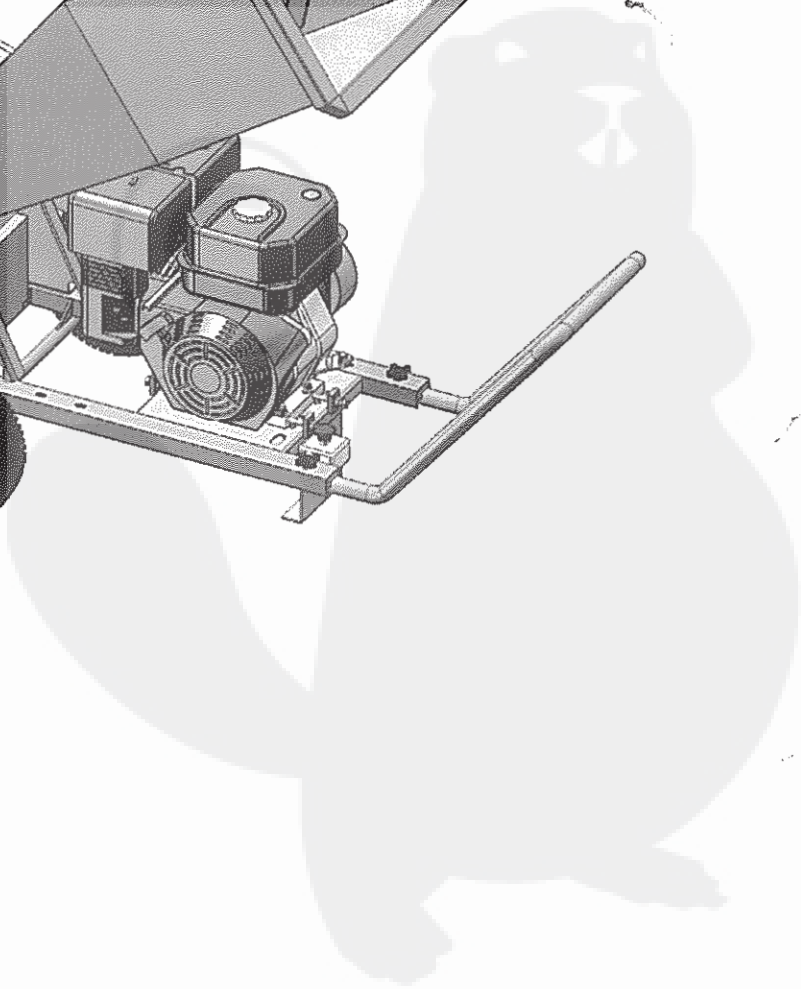
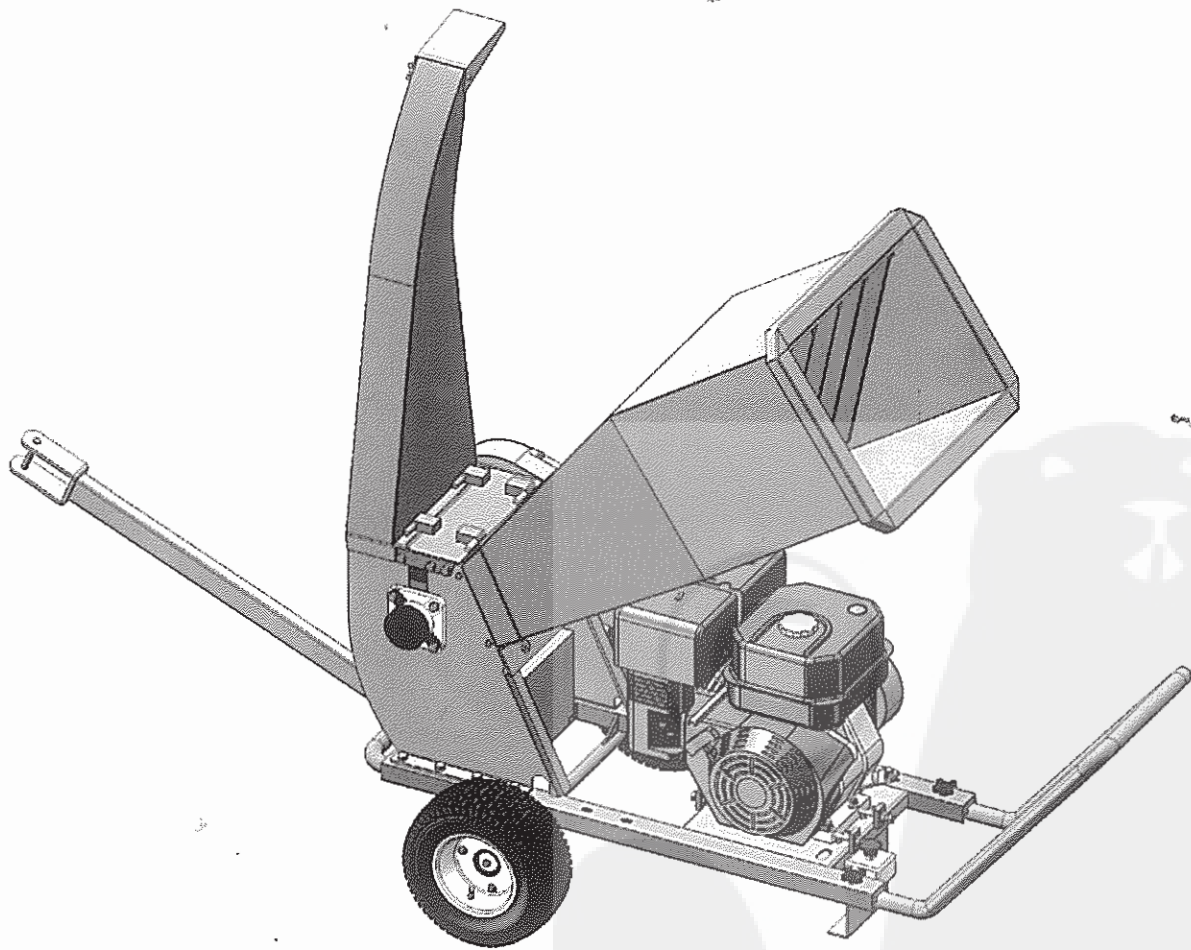
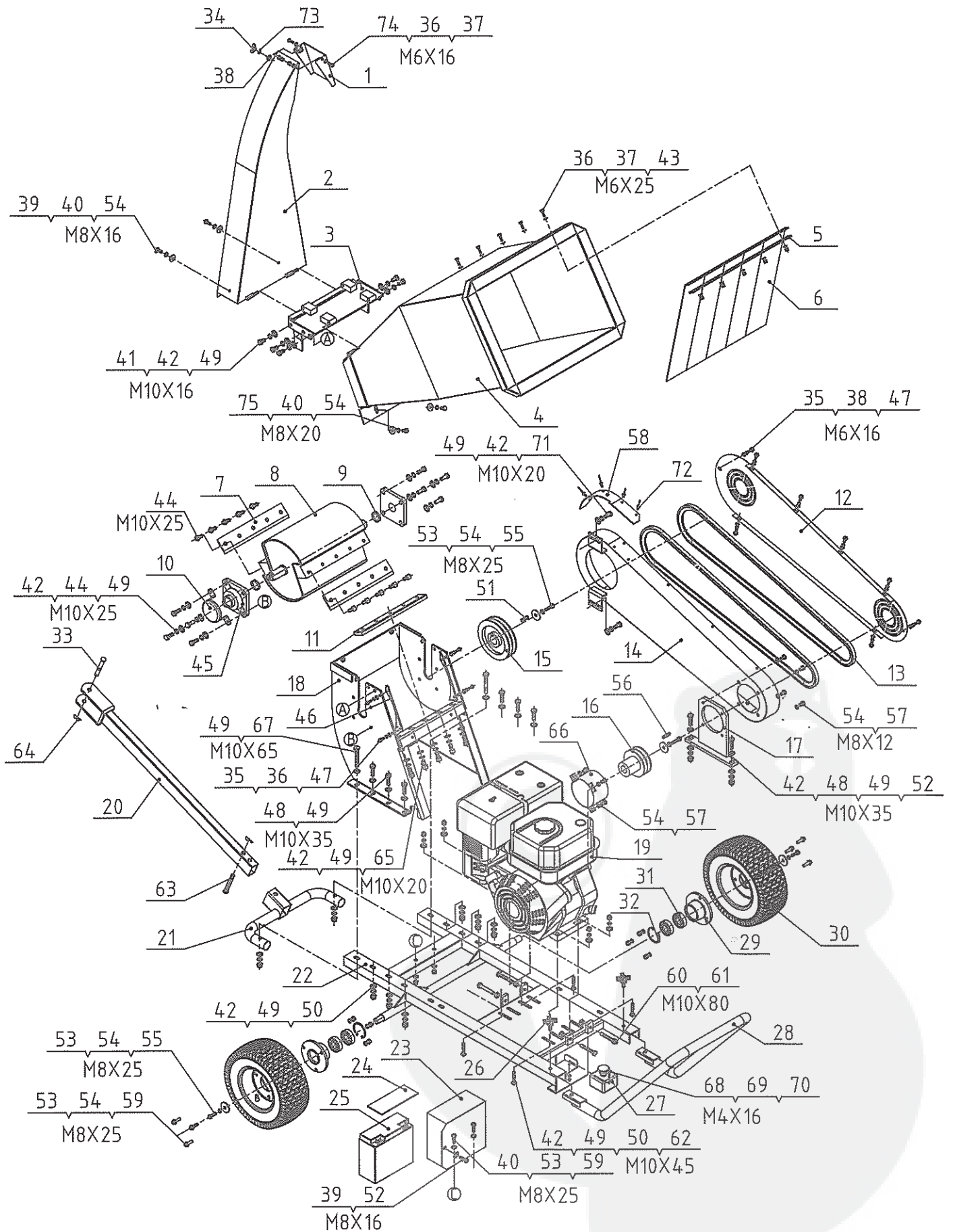


# Wood Shredder Chipper Owner's Manual



# PARTS DRAWING



	Part n°	Description	Qty
1	LZSHR150I-1	Frame	1
2	LZSHR150I-2	Outlet Hopper Assembly	1
3	LZSHR150I-3	Roller Cover plate Assembly	1
4	LZSHR150I-4	Inlet Hopper Assembly	1
5	LZSHR150I-5	Mound Layer	1
6	LZSHR150I-6	Inlet Hopper Rubber	1
7	LZSHR150I-7	Blade	2
8	LZSHR150I-8	Roller Assembly	1
9	LZSHR150I-9	Spacer	2
10	LZSHR150I-10	End Cap	1
11	LZSHR150I-11	Striker Plate	1
12	LZSHR150I-12	Belt Pulley Shroud	1
13	LZSHR150I-13	Triangle Belt	2
14	LZSHR150I-14	Belt Pulley Shroud Assembly	1
15	LZSHR150I-15	Large Belt Pulley	1
16	LZSHR150I-16	Small Belt Pulley	1
17	LZSHR150I-17	Shield Mounting Plate Assembly	1
18	LZSHR150I-18	Roller Base Assembly	1
19	LZSHR150I-19	15HP Engine	1
20	LZSHR150I-20	Tow Bar	1
21	LZSHR150I-21	Hand Grip	1
22	LZSHR150I-22	Base	1
23	LZSHR150I-23	Battery Box	1
24	LZSHR150I-24	Rubber Cushion	1
25	LZSHR150I-25	Battery 12V 18AH	1
26	LZSHR150I-26	Hand Wheel	2
27	LZSHR150I-27	Scram	1
28	LZSHR150I-28	Hand Grip	1
29	LZSHR150I-29	Bearing Block	2
30	LZSHR150I-30	Wheel Assembly	2
31	LZSHR150I-31	Deep Groove Ball Bearing	4
32	LZSHR150I-32	Lock Retainer Ring	2
33	LZSHR150I-33	Hitch Pin	1
34	LZSHR150I-34	Wing Nut M6	1
35	LZSHR150I-35	Hex Bolt M6x16	12
36	LZSHR150I-36	Flat Washer Ø6	18
37	LZSHR150I-37	Nylon Lock Bolt M6	7
38	LZSHR150I-38	Big Flat Washer Ø6	9
39	LZSHR150I-39	Hex Bolt M8x16	3
40	LZSHR150I-40	Big Flat Washer Ø8	8
41	LZSHR150I-41	Hex Bolt M10x16	5
42	LZSHR150I-42	Lock Washer Ø10	34
43	LZSHR150I-43	Hex Bolt M6x25	5
44	LZSHR150I-44	Hex Bolt M10x25	18
45	LZSHR150I-45	Bearing	2
46	LZSHR150I-46	Blade Protector	2
47	LZSHR150I-47	Lock Washer Ø6	12
48	LZSHR150I-48	Hex Bolt M10x35	8
49	LZSHR150I-49	Flat Washer Ø10	44

	Part n°	Description	Qty
50	LZSHR150I-50	Nylon Lock Nut M10	14
51	LZSHR150I-51	Key	1
52	LZSHR150I-52	Flat Washer Ø8	2
53	LZSHR150I-53	Hex Bolt M8X25	12
54	LZSHR150I-54	Lock Washer Ø8	21
55	LZSHR150I-55	Flat Washer	4
56	LZSHR150I-56	Key	1
57	LZSHR150I-57	Hex Bolt	7
58	LZSHR150I-58	Baffle	1
59	LZSHR150I-59	Nylon Lock Nut M8	8
60	LZSHR150I-60	Hex Bolt M10x80	4
61	LZSHR150I-61	Hex Nut M10	4
62	LZSHR150I-62	Bolt M10x50	4
63	LZSHR150I-63	Hitch Pin	1
64	LZSHR150I-64	pin	2
65	LZSHR150I-65	Inner Hex Screw M10x20	5
66	LZSHR150I-66	Engine Protector Assembly	1
67	LZSHR150I-67	Hex Bolt M10x65	2
68	LZSHR150I-68	Screw M4X16	2
69	LZSHR150I-69	Flat Washer Ø4	2
70	LZSHR150I-70	Nylon Lock Nut M4	2
71	LZSHR150I-71	Hex Bolt M10x20	2
72	LZSHR150I-72	Blind Rivet	4
73	LZSHR150I-73	Lock Washer Ø6	1
74	LZSHR150I-74	Screw M6x16	2
75	LZSHR150I-75	Hex Bolt M8x20	2
88	LZSHR150I-88	Screw Bag	1
	LZSHR150L-KEY	KEY	1

