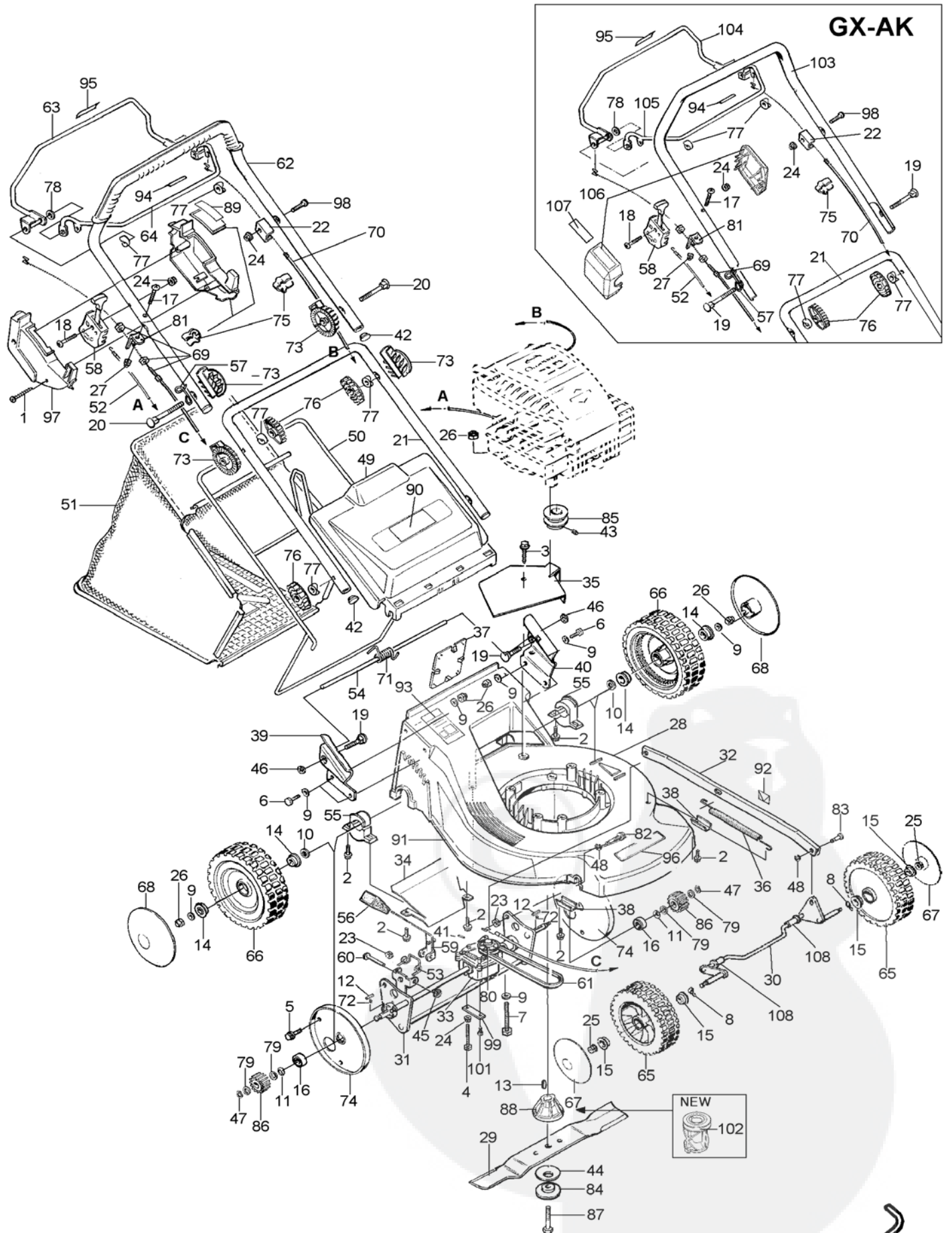


# GT 45 S - GX 45 S - AK 45 S



| POS. | CODICE      | I                   | F                 | D                | GB             | E              | GT 45                             | GX 45                       | AK 45 |  |  |
|------|-------------|---------------------|-------------------|------------------|----------------|----------------|-----------------------------------|-----------------------------|-------|--|--|
| 1    | CP025040    | VITE AUTOF.         | VIS               | SCHRAUBE         | SCREW          | TORNILLO       | 2                                 | 2                           | 2     |  |  |
| 2    | CP026016    | VITE AUTOF.         | VIS               | SCHRAUBE         | SCREW          | TORNILLO       | 8                                 | 8                           | 8     |  |  |
| 3    | CP026338    | VITE AUTOF.         | VIS               | SCHRAUBE         | SCREW          | TORNILLO       | 1                                 | 1                           | 1     |  |  |
| 4    | CP030630    | VITE                | VIS               | SCHRAUBE         | SCREW          | TORNILLO       | 1                                 | 1                           | 1     |  |  |
| 5    | CP030816    | VITE TE             | VIS               | SCHRAUBE         | SCREW          | TORNILLO       | 1                                 | 1                           | 1     |  |  |
| 6    | CP030825    | VITE TE             | VIS               | SCHRAUBE         | SCREW          | TORNILLO       | 4                                 | 4                           | 4     |  |  |
| 7    | CP030880    | VITE TE             | VIS               | SCHRAUBE         | SCREW          | TORNILLO       | 3                                 | 3                           | 3     |  |  |
| 8    | CP032813    | RONDELLA            | RONDELLE          | SCHEIBE          | WASHER         | ARANDELA       | 2                                 | 2                           | 2     |  |  |
| 8    | CP032913    | RONDELLA            | RONDELLE          | SCHEIBE          | WASHER         | ARANDELA       | 4 X RUOTE CP047118.98-CP053128.98 |                             |       |  |  |
| 9    | CP032908    | RONDELLA            | RONDELLE          | SCHEIBE          | WASHER         | ARANDELA       | 9                                 | 9                           | 9     |  |  |
| 10   | CP032913    | RONDELLA            | RONDELLE          | SCHEIBE          | WASHER         | ARANDELA       | 2                                 | 2                           | 2     |  |  |
| 11   | CP035905    | RASAMENTO           | RONDELLE          | SCHEIBE          | WASHER         | ARANDELA       | 2                                 | 2                           | 2     |  |  |
| 12   | CP037305    | CHIAVETTA           | CLAVETTE          | SCHLÜSSELCHEN    | WOODRUFF KEY   | CHAVETA        | 2                                 | 2                           | 2     |  |  |
| 13   | CP037406    | CHIAVETTA           | CLAVETTE          | SCHLÜSSELCHEN    | WOODRUFF KEY   | CHAVETA        | 1 (fino a / till 03/1999)         |                             |       |  |  |
| 14   | CP038226    | CUSCINETTO 12X26    | ROULEMENT         | KUGELLAGER       | BALL BEARING   | COJINETE       | 4                                 | 4                           | 4     |  |  |
| 14   | CP038228    | CUSCINETTO          | ROULEMENT         | KUGELLAGER       | BALL BEARING   | COJINETE       | 2 X RUOTE CP053128.98             |                             |       |  |  |
| 15   | CP038227    | CUSCINETTO 12X27    | ROULEMENT         | KUGELLAGER       | BALL BEARING   | COJINETE       | 4                                 | 4                           | 4     |  |  |
| 15   | CP038228    | CUSCINETTO          | ROULEMENT         | KUGELLAGER       | BALL BEARING   | COJINETE       | 2 X RUOTE CP047118.98             |                             |       |  |  |
| 16   | CP038228    | CUSCINETTO          | ROULEMENT         | KUGELLAGER       | BALL BEARING   | COJINETE       | 2                                 | 2                           | 2     |  |  |
| 17   | CP040630    | VITE TTQST          | VIS               | SCHRAUBE         | SCREW          | TORNILLO       | 1                                 | 1                           | 1     |  |  |
| 18   | CP040640    | VITE TTQST          | VIS               | SCHRAUBE         | SCREW          | TORNILLO       | 1                                 | 1                           | 1     |  |  |
| 19   | CP040850    | VITE TTQST          | VIS               | SCHRAUBE         | SCREW          | TORNILLO       | 2                                 | 4                           | 4     |  |  |
| 20   | CP040875    | VITE TTQST          | VIS               | SCHRAUBE         | SCREW          | TORNILLO       | 2                                 |                             |       |  |  |
| 21   | CP047034    | MANICO INF.         | GUIDON            | STIEL            | HANDLE         | MANILLAR       | 1                                 | 1                           | 1     |  |  |
| 22   | CP042216    | BLOCCHETTO CAVO F   | ATTACHE CABLE FRE | KABELBESCHWERER  | CLIP           | FIJADOR CABLE  | 1                                 | 1                           | 1     |  |  |
| 23   | CP042708    | DADO                | ÉCROU             | MUTTER           | KNOB           | ESPARRAGO      | 2                                 | 2                           | 2     |  |  |
| 24   | CP042806    | DADO                | ÉCROU             | MUTTER           | KNOB           | ESPARRAGO      | 3                                 | 3                           | 3     |  |  |
| 25   | CP042808    | DADO                | ÉCROU             | MUTTER           | KNOB           | ESPARRAGO      | 2                                 | 2                           | 2     |  |  |
| 26   | CP044708    | DADO                | ÉCROU             | MUTTER           | KNOB           | ESPARRAGO      | 9                                 | 9                           | 9     |  |  |
| 27   | CP044906    | DADO                | ÉCROU             | MUTTER           | KNOB           | ESPARRAGO      | 2                                 | 2                           | 2     |  |  |
| 28   | CP045002    | CHASSIS VERDE       | CARTER            | GEHÄUSE          | DECK           | CHASIS         | 1                                 |                             |       |  |  |
| 28   | CP045002.02 | CHASSIS ROSSO       | CARTER            | GEHÄUSE          | DECK           | CHASIS         |                                   | 1                           |       |  |  |
| 28   | CP045002.03 | CHASSIS ARGENTO     | CARTER            | GEHÄUSE          | DECK           | CHASIS         |                                   |                             | 1     |  |  |
| 29   | CP045013    | LAMA                | LAME              | MESSER           | BLADE          | CUCHILLA       | 1                                 | 1                           | 1     |  |  |
| 30   | CP045049    | ASSALE ANT          | AXE AVANT         | VORDERACHSE      | FRONT AXLE     | EJE ANTERIOR   | 1                                 | 1                           | 1     |  |  |
| 31   | CP045058    | ASSALE POS          | AXE ARRIERE       | HINTERACHSE      | REAR AXLE      | EJE POSTERIOR  | 1                                 | 1                           | 1     |  |  |
| 32   | CP045063    | TIRANTE ASSALE      | BARRE             | GESTÄNGE         | LINK ROD       | TIRANTE EJE    | 1                                 | 1                           | 1     |  |  |
| 33   | CP045088    | RIDUTTORE TR 45     | REDUCTEUR         | UNTERSETZUNGGETR | GEAR BOX ASSY  | TRANSMISION    | 1                                 | 1                           | 1     |  |  |
| 34   | CP045094    | DEFLETTORE          | DEFLECTEUR        | DEFLEKTOR        | DEFLECTOR      | DEFLECTÓR      | 1                                 | 1                           | 1     |  |  |
| 35   | CP045098    | COPRICINGHIA        | COUVERCLE COURR   | RIEMENSCHUTZ     | BELT COVER     | TAPA           | 1                                 | 1                           | 1     |  |  |
| 36   | CP045192    | MOLLA               | RESSORT           | FEDER            | SPRING         | MUELLE         | 1                                 | 1                           | 1     |  |  |
| 37   | CP045225    | COPERCHIETTO        | COUVERCLE         | KAPPE            | CAP            | TAPA           | 1                                 | 1                           | 1     |  |  |
| 38   | CP045250    | PIASTRINA           | PLAQUE            | PLÄTTCHEN        | PLATE          | PLANCHA        | 2                                 | 2                           | 2     |  |  |
| 39   | CP045268    | PIASTRA             | PLAQUE            | PLÄTTCHEN        | PLATE          | PLANCHA        | 1                                 | 1                           | 1     |  |  |
| 40   | CP045269    | PIASTRA             | PLAQUE            | PLÄTTCHEN        | PLATE          | PLANCHA        | 1                                 | 1                           | 1     |  |  |
| 41   | CP045530    | SPINA               | GOUPILLE          | DORN             | PIN            | PASADOR        | 1                                 | 1                           | 1     |  |  |
| 42   | CP045722    | TAPPO               | COUVERCLE         | KAPPE            | CAP            | TAPA           | 4                                 | 2                           | 2     |  |  |
| 43   | CP045810    | GRANO               | VIS               | SCHRAUBE         | SCREW          | TORNILLO       | 1 (fino a / till 03/1999)         |                             |       |  |  |
| 44   | CP045911    | MOLLA A TAZZA       | RONDELLE          | SCHEIBE          | WASHER         | MUELLE         | 1                                 | 1                           | 1     |  |  |
| 45   | CP046606    | RITEGNO             | CLIP              | RÜCKHALT         | RETAINER       | ANILLO CLIP    | 1                                 | 1                           | 1     |  |  |
| 46   | CP046607    | RITEGNO             | CLIP              | RÜCKHALT         | RETAINER       | ANILLO CLIP    | 2                                 | 2                           | 2     |  |  |
| 47   | CP046812    | SEEGER              | SEEGER            | RÜCKHALT         | RETAINER       | ANILLO CLIP    | 4                                 | 4                           | 4     |  |  |
| 48   | CP046904    | FERMO               | CLIP              | RÜCKHALT         | RETAINER       | ANILLO CLIP    | 2                                 | 2                           | 2     |  |  |
| 49   | CP047018    | PARASASSI           | DEFLECTEUR        | DEFLEKTOR        | REAR DOOR      | DEFLECTÓR      | 1                                 | 1                           | 1     |  |  |
| 50   | CP047078    | TELAIO CESTO        | ATTELAGE          | GRASFANGRAHMEN   | FRAME          | ARMAZON SACO   | 1                                 | 1                           | 1     |  |  |
| 51   | CP047083    | TELA CESTO BIANCA   | SAC RAMASSEUR     | GRASFANGSACK     | GRASS BAG      | SACO TELA      | 1                                 |                             | 1     |  |  |
| 51   | CP047083.05 | TELA CESTO NERA     | SAC RAMASSEUR     | GRASFANGSACK     | GRASS BAG      | SACO TELA      |                                   | 1                           |       |  |  |
| 52   | ?-TAB-AC    | CAVO ACCELERATOR    | CABLE GAZ         | KABEL            | CABLE          | CABLE          | 1                                 | 1                           | 1     |  |  |
| 53   | CP047191    | MOLLA               | RESSORT           | FEDER            | SPRING         | MUELLE         | 1                                 | 1                           | 1     |  |  |
| 54   | CP045203    | ASTINA              | AXE PIVOT         | STANGE           | HINGE PIN      | EJE DEFLECTÓR  | 1                                 | 1                           | 1     |  |  |
| 55   | CP047215    | SUPPORTO ASSALE     | SUPPORT           | ACHSELAGER       | SUPPORT        | SOPORTE        | 2                                 | 2                           | 2     |  |  |
| 56   | CP047236    | CAPPUCCIO           | CACHE MOYEU       | KAPPE            | HOOD           | POMO           | 1                                 | 1                           | 1     |  |  |
| 57   | CP047242    | GANCIO FUNE AVV.    | PORTE CABLE       | KABELHALTER      | CABLE SUPPORT  | FIJADOR CABLE  | 1                                 | 1                           | 1     |  |  |
| 58   | CP047250    | COMANDO ACCELERA    | LEVIER            | STANGE           | THROTTLE LEVER | LEVA           | 1                                 | 1                           | 1     |  |  |
| 59   | CP047254    | LEVA ALZO           | LEVIER            | STANGE           | LEVER          | LEVA ALTURAS   | 1                                 | 1                           | 1     |  |  |
| 60   | CP047267    | PERNO               | GOIJON            | ZAPFEN           | PIN            | PERNO          | 1                                 | 1                           | 1     |  |  |
| 61   | CP047829    | CINGHIA Z 29 1/2    | COURROIE          | RIEMEN           | BELT           | CORREA         | 1                                 | 1                           | 1     |  |  |
| 62   | CP050043    | MANICO SUP.         | GUIDON            | STIEL            | HANDLE         | MANILLAR       | 1                                 |                             |       |  |  |
| 63   | CP050068    | LEVA INNESTO        | LEVIER EMBRAYAGE  | STANGE           | LEVER CLUTCH   | LEVA           | 1                                 |                             |       |  |  |
| 64   | CP050073    | LEVA FRENO          | LEVIER FREIN      | STANGE           | LEVER          | LEVA           | 1                                 |                             |       |  |  |
| 65   | CP050106    | RUOTA 180           | ROUE              | RAD              | WHEEL          | RUEDA          |                                   | 2                           | 2     |  |  |
| 65   | CP050108    | RUOTA 180           | ROUE              | RAD              | WHEEL          | RUEDA          | 2                                 | <-- (fino a / till 04/2004) |       |  |  |
| 65   | CP047118.98 | RUOTA 180 PH ZINCA  | ROUE ACIER        | VERZINKTES RAD   | ZINC WHEEL     | RUEDA ZINC     | 2                                 | <-- (da / from 01/2006)     |       |  |  |
| 66   | CP050116    | RUOTA 200           | ROUE              | RAD              | WHEEL          | RUEDA          |                                   | 2                           | 2     |  |  |
| 66   | CP050118    | RUOTA 200           | ROUE              | RAD              | WHEEL          | RUEDA          | 2                                 | <-- (fino a / till 04/2004) |       |  |  |
| 66   | CP053128.98 | RUOTA 209T PH ZINCA | ROUE ACIER        | VERZINKTES RAD   | ZINC WHEEL     | RUEDA ZINC     | 2                                 | <-- (da / from 01/2006)     |       |  |  |
| 67   | CP050127    | COPRIRUOTA 180      | CACHE MOYEU       | RADDECKUNG       | HUB CAP        | TAPA RUEDA     | 2 (from 04/2004 to 12/2005)       |                             |       |  |  |
| 67   | CP050128    | COPRIRUOTA 180      | CACHE MOYEU       | RADDECKUNG       | HUB CAP        | TAPA RUEDA     | 2 (fino a / till 04/2004)         |                             |       |  |  |
| 67   | CP047133    | COPRIRUOTA          | CACHE MOYEU       | RADDECKUNG       | HUB CAP        | TAPA RUEDA     | 2 (da / from 01/2006)             |                             |       |  |  |
| 68   | CP050132    | COPRIRUOTA 200-230  | CACHE MOYEU       | RADDECKUNG       | HUB CAP        | TAPA RUEDA     | 2 (from 04/2004 to 12/2005)       |                             |       |  |  |
| 68   | CP050133    | COPRIRUOTA 200-230  | CACHE MOYEU       | RADDECKUNG       | HUB CAP        | TAPA RUEDA     | 2 (fino a / till 04/2004)         |                             |       |  |  |
| 68   | CP047133    | COPRIRUOTA          | CACHE MOYEU       | RADDECKUNG       | HUB CAP        | TAPA RUEDA     | 2 (da / from 01/2006)             |                             |       |  |  |
| 69   | CP050139    | CAVO SEMOVENZA      | CABLE D'EMBAYAGE  | SELBSTBEWEGLICHK | CABLE CLUTCH   | CABLE TRACCION | 1                                 | 1                           | 1     |  |  |
| 70   | ?-TAB-FR    | CAVO FRENO          | CABLE FREIN       | KABEL            | CABLE          | CABLE          | 1                                 | 1                           | 1     |  |  |
| 71   | CP050192    | MOLLA PARASASSI     | RESSORT           | FEDER            | SPRING         | MUELLE         | 1                                 | 1                           | 1     |  |  |

| POS. | CODICE      | I                      | F                   | D               | GB                   | E                    | GT 45                     | GX 45 | AK 45 |
|------|-------------|------------------------|---------------------|-----------------|----------------------|----------------------|---------------------------|-------|-------|
| 72   | CP050194    | MOLLA                  | RESSORT             | FEDER           | SPRING               | MUELLE               | 2                         | 2     | 2     |
| 73   | CP050212    | REGOLATORE MANICO      | REGLAGE DE GUIDON   | STIELREGULATOR  | HANDLE REGULATOR     | REGULADOR MANILLA    | 4                         |       |       |
| 74   | CP050214    | COPRIRUOTA INTERN      | CACHE MOYEU         | RADDECKUNG      | HUB CAP              | TAPA RUEDA           | 2                         | 2     | 2     |
| 75   | CP050222    | FERMACAVO              | ATTACHE CABLE       | KABELBESCHWERER | CLIP                 | FIJADOR CABLE        | 2                         | 2     | 2     |
| 76   | CP050228    | POMOLO MANICO          | ÉCROU               | GRIFF           | KNOB HANDLE          | POMO MANILLAR        | 4                         | 4     | 4     |
| 77   | CP050230    | RONDELLA               | RONDELLE            | SCHEIBE         | WASHER               | ARANDELA             | 6                         | 6     | 6     |
| 78   | CP050234    | RONDELLA               | RONDELLE            | SCHEIBE         | WASHER               | ARANDELA             | 2                         | 2     | 2     |
| 79   | CP050238    | RONDELLA               | RONDELLE            | SCHEIBE         | WASHER               | ARANDELA             | 4                         | 4     | 4     |
| 80   | CP050240    | PULEGGIA D.55          | POULIE              | RIEMENSCHLEIBE  | PULLEY               | POLEA                | 1                         | 1     | 1     |
| 81   | CP050243    | STAFFETTA REGISTR      | EQUARRE             | WINKELMASS      | BRACKET              | ABRAZDERA CABLE      | 1                         | 1     | 1     |
| 82   | CP050256    | VITE SPECIALE          | VIS                 | SCHRAUBE        | SCREW                | TORNILLO             | 1                         | 1     | 1     |
| 83   | CP050258    | PERNO                  | GOIJON              | ZAPFEN          | PIN                  | PERNO                | 1                         | 1     | 1     |
| 84   | CP053250    | RONDELLA               | RONDELLE            | SCHEIBE         | WASHER               | ARANDELA             | 1                         | 1     | 1     |
| 85   | CP050262    | PULEGGIA MOTORE D      | POULIE              | RIEMENSCHLEIBE  | PULLEY               | POLEA                | 1 (fino a / till 03/1999) |       |       |
| 86   | CP050298    | INGRANAGGIO            | PIGNON              | GETRIEBE        | PINION               | ENGRANAJE            | 2                         | 2     | 2     |
| 87   | CP050965    | VITE LAMA 10.9         | VIS 10.9            | SCHRAUBE 10.9   | SCREW 10.9           | TORNILLO 10.9        | 1                         | 1     | 1     |
| 88   | CP053273    | MOZZO LAMA 22          | PORTE LAME          | MESSERHALTER    | BLADE ADAPTOR        | PORTA CUCHILLA       | 1 (fino a / till 03/1999) |       |       |
| 89   | CP053710    | DECALCO                | DECALQUE            | ETIKETTE        | DECAL                | CARTEL               | 1                         | 1     | 1     |
| 90   | CP053715    | DECALCO                | DECALQUE            | ETIKETTE        | DECAL                | CARTEL               | 1                         | 1     | 1     |
| 91   | CP053738    | DECALCO                | DECALQUE            | ETIKETTE        | DECAL                | CARTEL               | 1                         | 1     | 1     |
| 92   | CP053802    | DECALCO                | DECALQUE            | ETIKETTE        | DECAL                | CARTEL               | 1                         | 1     | 1     |
| 93   | CP053813    | DECALCO                | DECALQUE            | ETIKETTE        | DECAL                | CARTEL               | 1                         | 1     | 1     |
| 94   | CP053842    | DECALCO                | DECALQUE            | ETIKETTE        | DECAL                | CARTEL               | 1                         | 1     | 1     |
| 95   | CP053843    | DECALCO                | DECALQUE            | ETIKETTE        | DECAL                | CARTEL               | 1                         | 1     | 1     |
| 96   | CP053849    | DECALCO AKITA          | DECALQUE            | ETIKETTE        | DECAL                | CARTEL               |                           |       | 1     |
| 96   | CP053860    | DECALCO GREENTEA       | DECALQUE            | ETIKETTE        | DECAL                | CARTEL               | 1                         |       |       |
| 96   | CP053861    | DECALCO GALAXY         | DECALQUE            | ETIKETTE        | DECAL                | CARTEL               |                           | 1     |       |
| 97   | CP056226    | COPRIACCELERATOR       | COUVERCLE           | DECKEL          | COVER                | COPA PROTECTORA      | 1                         |       |       |
| 98   | CP060640    | VITE TC                | VIS                 | SCHRAUBE        | SCREW                | TORNILLO             | 1                         | 1     | 1     |
| 99   | CP070451    | PIASTRINA              | PLAQUE              | PLÄTTCHEN       | PLATE                | PLANCHA              | 1                         | 1     | 1     |
| 101  | CP026316    | VITE AUTOF.            | VIS                 | SCHRAUBE        | SCREW                | TORNILLO             | 1                         | 1     | 1     |
| 102  | CP053274B22 | MOZZO D.22.2 +PULEGGIA | PORTE LAME + POULIE | MESSERHALTER    | BLADE ADAPTOR+PULLEY | PORTA CUCHILLA+POLEA | 1 (ø Shaft 22,2 mm)       |       |       |
| 102  | CP053274B25 | MOZZO D.25 +PULEGGIA   | PORTE LAME + POULIE | MESSERHALTER    | BLADE ADAPTOR+PULLEY | PORTA CUCHILLA+POLEA | 1 (ø Shaft 25 mm)         |       |       |
| 103  | CP047042    | MANICO SUP.            | GUIDON              | STIEL           | HANDLE               | MANILLAR             |                           | 1     | 1     |
| 104  | CP047068    | LEVA INNESTO           | LEVIER EMBRAYAGE    | STANGE          | LEVER CLUTCH         | LEVA                 |                           | 1     | 1     |
| 105  | CP047073    | LEVA FRENO             | LEVIER FREIN        | STANGE          | LEVER                | LEVA                 |                           | 1     | 1     |
| 106  | CP047220    | COPRIACCELERATOR       | COUVERCLE           | DECKEL          | COVER                | COPA PROTECTORA      |                           | 1     | 1     |
| 107  | CP053713    | DECALCO                | DECALQUE            | ETIKETTE        | DECAL                | CARTEL               |                           | 1     | 1     |
| 108  | CP050232    | BOCCOLA                | BOUCLE              | BÜCHSE          | BUSH                 | COJINETE             | 2                         | 2     | 2     |

MANICO TRAZIONE - REGOLABILE 03/2006

