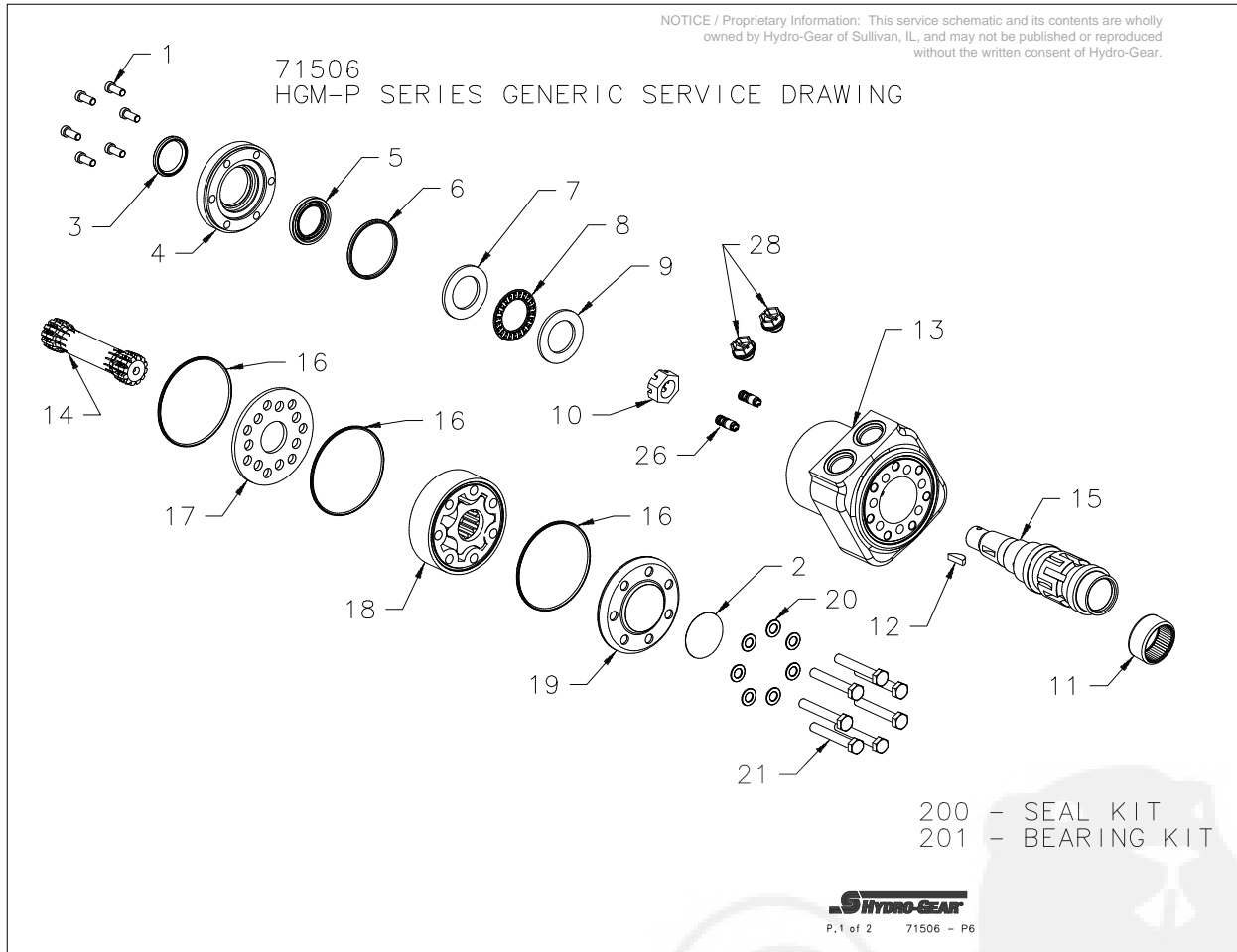


Service Schematic - Before Serial # 5146N10001



Service Schematic - Before Serial # 5146N10001

| # | PART # | DESCRIPTION | QTY | Note |
|-----|---------|--|-----|------|
| 1 | | SCREW | 6 | |
| 2 | | LABEL | 1 | |
| 3 | | DUST SEAL | 1 | |
| 4 | | SPIGOT FLANGE | 1 | |
| 5 | | SHAFT SEAL | 1 | |
| 6 | | O-RING | 1 | |
| 7 | | BEARING RACE 29.5 X 47.5 X 2.38mm | 1 | |
| 8 | | BEARING, AXIAL NEEDLE 28. 7 X 42 X 4.5mm | 1 | |
| 9 | | BEARING RACE 28 .58 X 44.45 X 1.6mm | 1 | |
| 10 | 53625 | NUT HEX 3/4-20UNEF-2B SLOTTEDNUT CASTLE 3/4-20 UNEF-2B SLOTTED HEX | 1 | |
| 11 | | BEARING, NEEDLE | 1 | |
| 12 | 51871 | KEY 3/16 X 3/4 WOODRUFFKEY WOODRUFF 3/ 16 X 3/4 | 1 | |
| 13 | | HOUSING | 1 | |
| 14 | | SHAFT CARDAN | 1 | |
| 15 | | OUTPUT SHAFT | 1 | |
| 16 | | O-RING | 3 | |
| 17 | | PLATE , DISTRIBUTOR | 1 | |
| 18 | | GEAR WHEEL SET | 1 | |
| 19 | | END COVER | 1 | |
| 20 | | WASHER | 7 | |
| 21 | | SCREW | 7 | |
| 26 | | CHECK VALVE | 2 | |
| 28 | | PLUG | 2 | |
| 200 | 70626-1 | HGM-P SERIES SEAL KITKIT SEAL | 1 | |
| 201 | 71501 | HGM P-SERIES AXIAL BEARING SERV KITHGM P-SERIES AXIAL BEARING SERVICE KIT | 1 | |