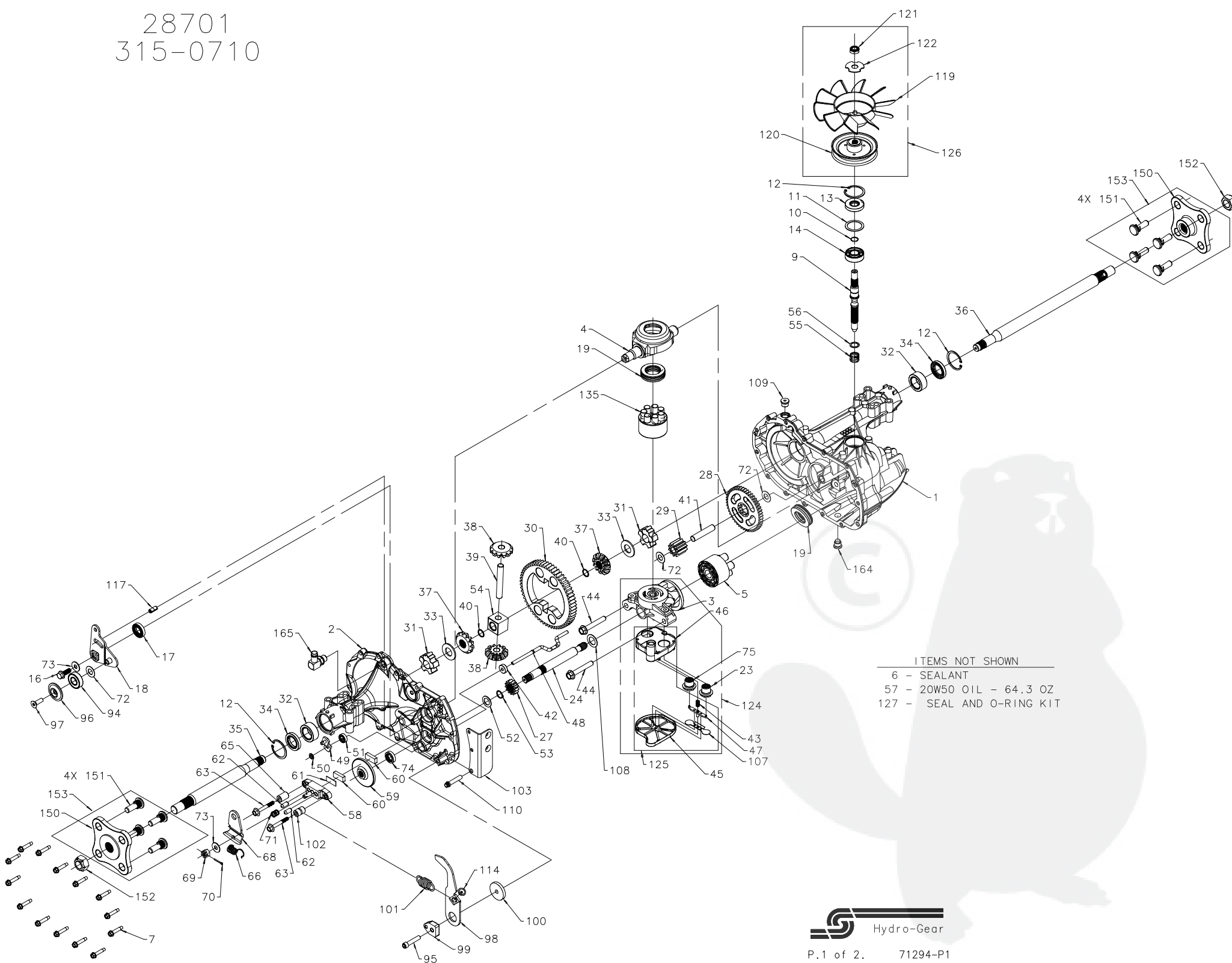


28701  
315-0710



ITEMS NOT SHOWN  
6 - SEALANT  
57 - 20W50 OIL - 64.3 OZ  
127 - SEAL AND O-RING KIT



28701  
315-0710

ITEM	PART NUMBER	QTY	DESCRIPTION
1	71295	1	MAIN HOUSING, ASSEMBLY EP BLACK
		1	MAIN HOUSING, EP BLACK
		1	BUSHING .865 X .985 X .790
		2	PIN, STANDARD HEADLESS
2	71296	1	SIDE HOUSING, ASSEMBLY EP BLACK
		1	SIDE HOUSING, EP BLACK
		1	BUSHING .865 X .985 X .790
		1	BUSHING .624 X .719 X .562
3	70724	1	CENTER SECTION, ASSEMBLY
		1	CENTER SECTION
		1	BUSHING .707 X .788 X .591
4	51048	1	TRUNNION, SWASHPLATE
5	70331	1	BLOCK, ASSEMBLY
		1	BLOCK, CYLINDER
		5	PISTON
		5	SPRING, COMPRESSION
		5	WASHER, THRUST
6	50928	10.1 02	SEALANT
7	51190	14	SCREW, HEX FLANGE 1/4-20 X 1.25
9	51062	1	SHAFT, INPUT
10	2000022	1	RING, RETAINING
11	50951	1	SPACER
12	50329	3	RING, RETAINING
13	51161	1	SEAL, LIP 17 X 40 X 7
14	50315	1	BEARING, BALL 17MM ID X 40MM OD X 12MM
16	51064	1	BOLT, HEX FLANGE HEAD 5/16-24 X .94 (PATCH)
17	51140	1	SEAL, LIP 18 X 32 X 7
18	51121	1	ARM, CONTROL
19	50551	2	BEARING, THRUST 30 X 52 X 13
23	52006	1	ASSEMBLY, CHECK PLUG, .044 BLEED, WASHER
24	50966	1	SHAFT, MOTOR
27	51130	1	GEAR, 13T PINNION
28	51129	1	GEAR, 10T/48T
29	51043	1	GEAR, 10T JACKSHAFT
30	51847	1	GEAR, 60T BULL
31	51088	2	BUSHING, SLEEVE (INBOARD)
32	51517	2	BUSHING, SLEEVE (OUTBOARD) 1.00 X 1.575 X .625
33	44875	2	WASHER, 3/4 x 1-1/2 x .13 THK
34	51518	2	SEAL, LIP 1.00 X 1.577 X .250
35	52218	1	SHAFT, AXLE 1.00 / .75 x 10.65 (FLANGE, R.H.)
36	52219	1	SHAFT, AXLE 1.00 / .75 X 16.25 (FLANGE, L.H.)
37	51829	2	MITER GEAR 12T (SPLINED)
38	51830	2	MITER GEAR 12T (0.5 ID)
39	50146	1	SHAFT, DIFF
40	44871	2	RING, SPIRAL RETAINING
41	51083	1	PIN, JACKSHAFT
42	51100	1	MAGNET, RING
43	51136	1	SPRING, BYPASS
44	50016	2	BOLT, HEX FLANGE 3/8-24 X 2.5
45	51581	1	BOTTOM, FILTER
46	51580	1	BASE, FILTER WITH POPPET
47	51091	1	ACTUATOR, BYPASS
48	51098	1	ROD, ACTUATOR BYPASS
49	52223	1	ARM, BYPASS
50	51116	1	RING, RETAINING .250 EXTERNAL
51	51081	1	SEAL, LIP .250 X .750 x .250 TC
52	44371	1	WASHER, FLAT 5/8 ID X 1.0 OD X .05 THK
53	44145	1	RING, RETAINING
54	51071	1	BUSHING, CENTER BLOCK
55	2003014	1	SPRING, BLOCK
56	2003017	1	WASHER, THRUST
57		64.3 02	OIL, 20W50
58	62589	1	KIT, BRAKE YOKE
		1	YOKE, BRAKE
		1	BOLT, SQ.HD. 5/16-24 - RIBBED
59	51072	1	ROTOR, BRAKE
60	44132	2	PUCK, BRAKE
61	44134	1	PLATE, PUCK
62	44127	2	PIN, BRAKE ACTUATING
63	51146	2	SCREW, SPECIAL FLANGE 1/4-20 X 2 W/PATCH
65	23711	1	SPACER
66	50884	1	SPRING, BRAKE ARM BIAS
68	51142	1	ARM, BRAKE

ITEM	PART NUMBER	QTY	DESCRIPTION
69	44142	1	NUT, CASTLE 5/16-24
70	44101	1	PIN, COTTER 3/32 X 3/4
71	50919	1	SPRING, COMPRESSION BRAKE ANTI-DRAG
72	50132	3	WASHER, HT .5 I.D. X 1 O.D. X .032
73	44130	2	FLAT, WASHER 11/32 I.D. X 7/8 O.D
74	70719	1	KIT, SEAL
		1	SEAL, LIP .625 X 1.0 X .25
		1	RING, RET - STAR WASHER
		1	BULLETIN, SHAFT SEAL
75	51207	1	CHECK PLUG ASSEMBLY, NO BLEED, WASHER
94	44147	1	BEARING, BALL .62 ID X 1.38 X .44
95	50837	1	SCREW, SOCKET HEAD CAP 5/16-24 X 1-1/2
96	51200	1	SPACER, LOCATING
97	50870	1	SCREW, COUNTERSUNK 5/16-18 X 1
98	51356	1	ARM, RETURN
99	51097	1	PUCK, ADJUSTING
100	51122	1	WASHER, .32 ID X 1.60 OD X .24
101	51131	1	SPRING, EXTENSION DOUBLE LOOP
102	51123	1	SPACER .260 ID X .560 OD X .870
103	51223	1	BRACKET, TORQUE
107	51134	1	DEFLECTOR
108	51069	1	WASHER, MOTOR SHAFT .71 ID X 1.15 OD X .030 THK
109	9005110-5600	1	PLUG, 9/16-18 (METAL)
110	50868	1	SCREW, TORX HEAD 5/16-18 T.F.
114	51184	1	SPRING GUIDE
117	51124	1	PIN, SPRING
119	51862	1	FAN, 7 IN 10 BLADE
120	51231	1	PULLEY, 3.86 IN
121	51244	1	NUT, HEX LOCK 1/2-20 (NYLON INSERT)
122	51523	1	WASHER, OD SLOTTED .53 X 1.63 X .06
124	71297	1	CENTER SECTION, FILTER, BYPASS ASSEMBLY
		1	CENTER SECTION
		1	BASE, FILTER WITH POPPET
		1	CHECK PLUG ASSEMBLY, NO BLEED WASHER
		1	CHECK PLUG ASSEMBLY, .044 BLEED WASHER
		1	SPRING, BYPASS
		1	ACTUATOR, BYPASS
		1	DEFLECTOR
		1	BOTTOM, FILTER
		1	BUSHING, .707 X .788 X .591
125	70756	1	FILTER ASSEMBLY
		1	BOTTOM, FILTER
		1	BASE, FILTER WITH POPPET
		1	SPRING, BYPASS
		1	ACTUATOR, BYPASS
		1	DEFLECTOR
126	70510	1	KIT, FAN/PULLEY
		1	WASHER, OD SLOTTED, .53 X 1.63 X .06
		1	FAN, 7 IN 10 BLADE
		1	PULLEY, 3.86 IN
		1	NUT, HEX LOCK 1/2-20 (NYLON INSERT)
127	70722	1	SEAL, O-RING KIT
		1	SEAL, LIP 17 X 40 X 7
		1	SEAL, LIP 18 X 32 X 7
		2	SEAL, LIP 1.00 X 1.577 X .250
		1	SEAL, LIP .250 X .750 X .250
		1	SEAL, LIP .625 X 1.0 X .25
		1	O-RING .106 ID X .299 OD
135	70723	1	BLOCK, ASSEMBLY
		1	BLOCK, CYLINDER
		7	PISTON
		7	SPRING, COMPRESSION
		7	WASHER, THRUST
150	52217	2	HUB, METRIC 4 STUD
151	52216	8	STUD, WHEEL M12 X 1.5
152	50863	2	NUT, HEX 3/4-16 LOCK
153	71298	2	ASSEMBLY, HUB METRIC 4 STUD
		1	HUB, METRIC 4 STUD
		4	STUD, WHEEL M12 X 1.5
164	51932	1	PLUG, 9/16-18 (MAGNETIC)
165	50589	1	FITTING, 9/16 90° METAL

