



GS-LM48S-...

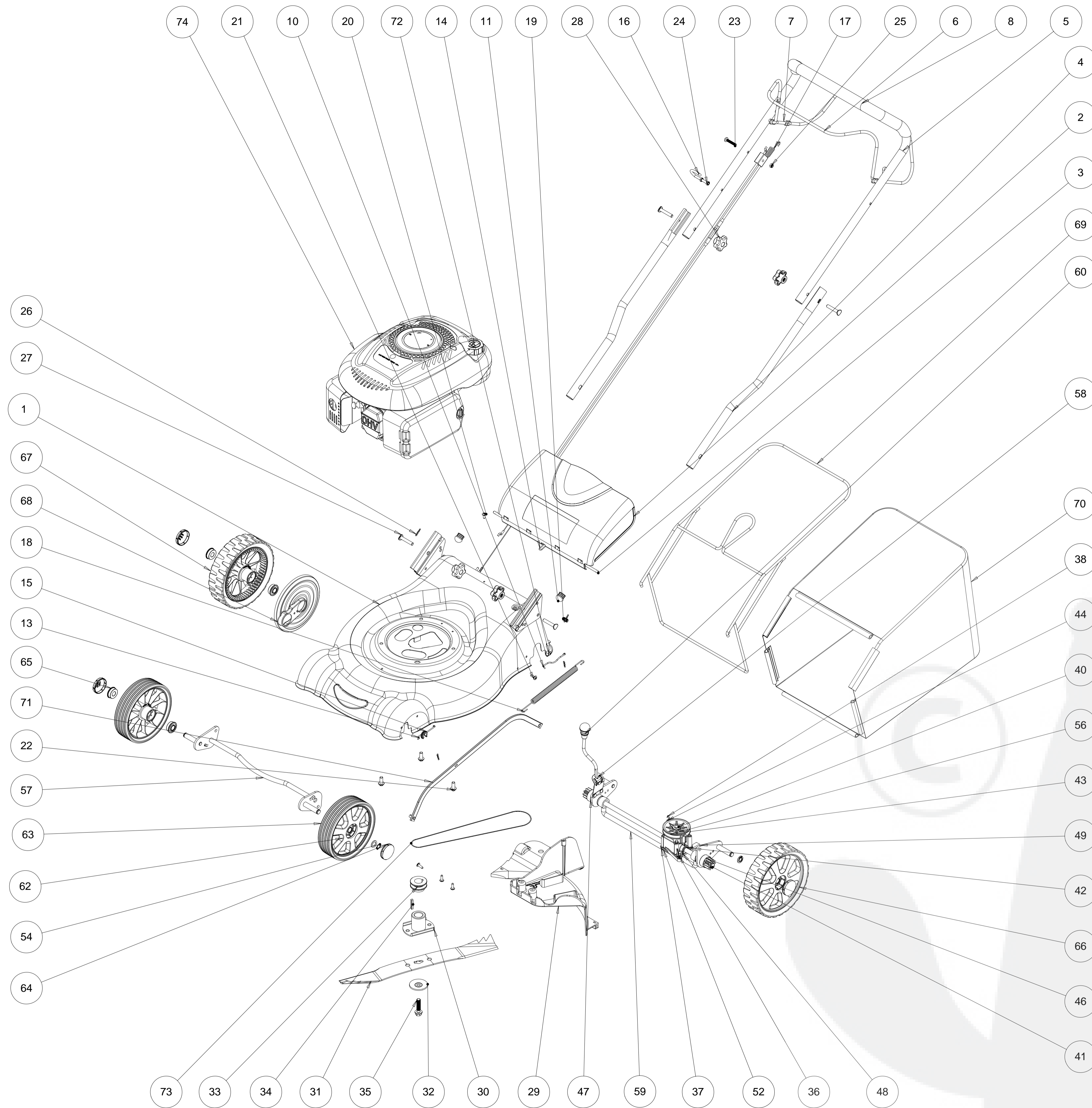
GGT  
2010.06.28  
生产用图

宁海县帕菲特园林工具有限公司  
Ninghai GGT Machinery Co., Ltd.

YH48S-TI (爆炸图)

YH48S

A1



项目号	数量	零件号	中文名称	英文名称
1	1	Y06100	底盘总成	Chassis
2	1	Y01108	防护罩	Shield
3	1	Y01109	防护罩轴	Shield Shaft
4	2	Y06111	下扶手	Lower Handle
5	1	Y06112	上扶手	Upper Handle
6	1	Y01113	熄火开关	Stop Switch
7	1	Y01114	自走开关	Drive Switch
8	1	Y01115	软扶手套	Foam Glove
9	1	Y01116	钢丝卡簧L	Spring L
10	1	Y01117	钢丝卡簧R	Spring R
11	2	Y01120	装饰盖	Decorate Cover
12	1	Y01121L	前钢丝L	Spring L
13	1	Y01121R	前钢丝R	Spring R
14	1	Y01123	草盖扣簧	Spring for Flap
15	2	Y01124	间距衬套	Space Bush
16	1	Y01128	挂扣	Rope Guide
17	1	Y06117	自走熄火拉线	Drive&Stop cable
18	1	Y01130	调高拉簧	Spring
19	1	Y01131-1	弹簧	Spring
20	1	Q273-ST4.8×13	自攻螺丝	Bolt
21	4	Q273-ST4.8×16	自攻螺丝	Bolt
22	3	GB5789-86-M8×20	六角法兰面螺栓	Bolt
23	1	GB818-M6-35	螺栓	Bolt
24	2	GB54-76-M6	六角螺母	Nut
25	1	GB6182-M6	六角螺母	Nut
26	4	Q501-8	销	Pin
27	4	MSX45	螺栓	Bolt
28	4	Y06118	M8梅花旋扭	Nut
29	1	Y06103	18英寸皮带盖	Strap Cover
30	1	Y01201	刀片支架	Blade Bracket
31	1	Y06202	刀片	Blade
32	1	Y01203	刀片垫片	Washer
33	1	Y01204	Z型V带轮	Belt Wheel
34	1	Y01209	曲轴长键	Key
35	1	3-8-24UNF-2B	美制六角螺栓	Bolt
36	1	Y01301	齿轮箱体	Gearcase Upper
37	1	Y01302	齿轮箱盖	Gearcase Cover
38	1	Y01303	拉簧	Spring
39	1	Y01304	伞齿	Gear
40	1	Y01305	锥齿	Pinion
41	1	Y01306	驱动轴	Driver Shaft
42	2	Y01307	含油轴承	Bearing
43	1	Y01308-2	V带轮	Pulley
44	1	Y01309	带轮罩	Bracket
45	2	Y01310	传动销	Groove Pin
46	1	Y01312	直齿L	GearL
47	1	Y01313	直齿R	GearR
48	1	Y01314	纸垫	Washer
49	1	Y01315	定位角块	Fixed position piece
50	1	6001LL-GBT276-94	6001LL深沟轴承	Bearing
51	1	GB879-86-4×20	弹性圆柱销	Pin
52	4	GB5789-86-M5×10	十字槽盘头螺栓	Bolt
53	2	GB5789-86-M5×13	十字槽盘头螺栓	Bolt
54	8	GB894 1-86-12	轴用弹性挡圈	Washer
55	1	GB8931-28	孔用弹性挡圈	Washer
56	1	GB879-86-4×30	弹性圆柱销	Pin
57	1	Y01400	前支架	Front Bracket
58	4	GB848-85-12	平垫圈	Washer
59	1	Y01500	后支架	Behind Bracket
60	1	Y01508	档位旋帽	Ward Turncap
61	2	6901LL-GBT276-94	深沟轴承	Bearing
62	2	Y01701	7英寸轮毂	7"Wheel
63	2	Y01702	7英寸外胎	7" Inch Tire
64	4	Y01703	轮毂外盖	Wheel cover
65	8	Y01704	外环凸缘轴承	Pressing Bearing
66	2	Y01801	8英寸轮毂	8"Wheel
67	2	Y01802	8英寸外胎	8" Inch Tire
68	2	Y01803	轮毂内盖	Dust cover
69	1	Y06901	集草袋铁框	Grass Catcher Casing
70	1	Y06902	集草袋总成	Grass Catcher
71	1	Y06104	连动杆	Connect rod
72	2	GB818-M5×10	十字槽盘头螺栓	Bolt
73	1	Z-Li737	V带	Belt
74	1	Engine GH500-ASSY	中国动力GH500	Engine

图纸的所有数据及复印件等资料,未经宁海县帕菲特园林工具有限公司的书面的许可是禁止拷贝、传播。  
THE INFORMATION CONTAINED IN THIS DRAWING IS THE SOLE PROPERTY OF  
<INSERT COMPANY NAME HERE>. ANY REPRODUCTION IN PART OR AS A  
WHOLE WITHOUT THE WRITTEN PERMISSION OF <INSERT COMPANY NAME HERE> IS PROHIBITED.

UNLESS OTHERWISE SPECIFIED:	FINISH	DEBUR AND
DIMENSIONS ARE IN MILLIMETERS		BRUSH SHARP
SURFACE FINISH		EDGES
TOLERANCES:		
LINEAR		
ANGULAR		
DATE	DATE	TITLE
DRAWN 赵延奇 2010-06-16		
CHK'D Andy zhao 2010-06-18		
APP'VD		
MFG 2010-06-28		
Q.A. GS Andy zhao	MATERIAL	DWG NO
		YH48S
WEIGHT	SCALE	SHEET 1 OF 1

It is list for 1pc YH48S lawn mower, you can chose which spare parts you need.

NO.	QTY	GGT NO.	Chinese name	English name	How many pcs for spare parts you need.
1	1	Y06100	底盘总成	Chassis	
2	1	Y01108	防护罩	Shield	
3	1	Y01109	防护罩轴	Shield Shaft	
4	2	Y06111	下扶手	Lower Handle	
5	1	Y06112	上扶手	Upper Handle	
6	1	Y01113	熄火开关	Stop Switch	
7	1	Y01114	自走开关	Drive Switch	
8	1	Y01115	软扶手套	Foam Glove	
9	1	Y01116	钢丝卡簧L	Spring L	
10	1	Y01117	钢丝卡簧R	Spring R	
11	2	Y01120	装饰盖	Decorate Cover	
12	1	Y01121L	前钢丝L	Spring L	
13	1	Y01121R	前钢丝R	Spring R	
14	1	Y01123	草盖扭簧	Spring for Flap	
15	2	Y01124	间距衬套	Space Bush	
16	1	Y01128	挂扣	Rope Guide	
17	1	Y06117	自走熄火拉线	Drive&Stop cable	
18	1	Y01130	调高拉簧	Spring	
19	1	Y01131-1	弹簧	Spring	
20	1	Q273-ST4.8×13	自攻螺丝	Bolt	
21	4	Q273-ST4.8×16	自攻螺丝	Bolt	
22	3	GB5789-86-M8×20	六角法来面螺栓	Bolt	
23	1	GB818-M6-35	螺栓	Bolt	
24	2	GB54-76-M6	六角螺母	Nut	
25	1	GB6182-M6	六角螺母	Nut	
26	4	Q501-8	销	Pin	
27	4	M8X45	螺栓	Bolt	
28	4	Y06118	M8梅花旋扭	Nut	
29	1	Y06103	18英寸皮带盖	Strap Cover	
30	1	Y01201	刀片支架	Blade Bracket	
31	1	Y06202	刀片	Blade	
32	1	Y01203	刀片垫片	Washer	
33	1	Y01204	Z型V带轮	Belt Wheel	
34	1	Y01209	曲轴长键	Key	
35	1	3-8-24UNF-2B	美制六角螺栓	Bolt	
36	1	Y01301	齿轮箱体	Gearcase Upper	
37	1	Y01302	齿轮箱盖	Gearcase Cover	
38	1	Y01303	拉簧	Spring	
39	1	Y01304	伞齿	Gear	
40	1	Y01305	锥齿	Pinion	
41	1	Y01306	驱动轴	Driver Shaft	
42	2	Y01307	含油轴承	Bearing	
43	1	Y01308-2	V带轮	Pulley	
44	1	Y01309	带轮罩	Bracket	
45	2	Y01310	传动销	Groove Pin	
46	1	Y01312	直齿L	GearL	
47	1	Y01313	直齿R	GearR	
48	1	Y01314	纸垫	Washer	
49	1	Y01315	定位角块	Fixed position piece	
50	1	6001LL-GBT276-94	6001LL深沟轴承	Bearing	
51	1	GB879-86-4×20	弹性圆柱销	Pin	
52	4	GB5789-86-M5×10	十字槽盘头螺栓	Bolt	

53	2	GB5789-86-M5×13	十字槽盘头螺栓	Bolt	
54	8	GB894 _ 1-86-12	轴用弹性挡圈	Washer	
55	1	GB8931-28	孔用弹性挡圈	Washer	
56	1	GB879-86-4×30	弹性圆柱销	Pin	
57	1	Y01400	前支架	Front Bracket	
58	4	GB848-85-12	平垫圈	Washer	
59	1	Y01500	后支架	Behind Bracket	
60	1	Y01508	档位旋帽	Ward Turncap	
61	2	6901LL-GBT276-94	深沟轴承	Bearing	
62	2	Y01701	7英寸轮毂	7"Wheel	
63	2	Y01702	7英寸外胎	7" Inch Tire	
64	4	Y01703	轮毂外盖	Wheel cover	
65	8	Y01704	外环凸缘轴承	Pressing Bearing	
66	2	Y01801	8英寸轮毂	8"Wheel	
67	2	Y01802	8英寸外胎	8" Inch Tire	
68	2	Y01803	轮毂内盖	Dust cover	
69	1	Y06901	集草袋铁框	Grass Catcher Casing	
70	1	Y06902	集草袋总成	Grass Catcher	
71	1	Y06104	连动杆	Connect rod	
72	2	GB818-M5×10	十字槽盘头螺栓	Bolt	
73	1	Z-Li737	V带	Belt	
74	1	Engine GH500-ASSY	中国动力GH500	Engine	

