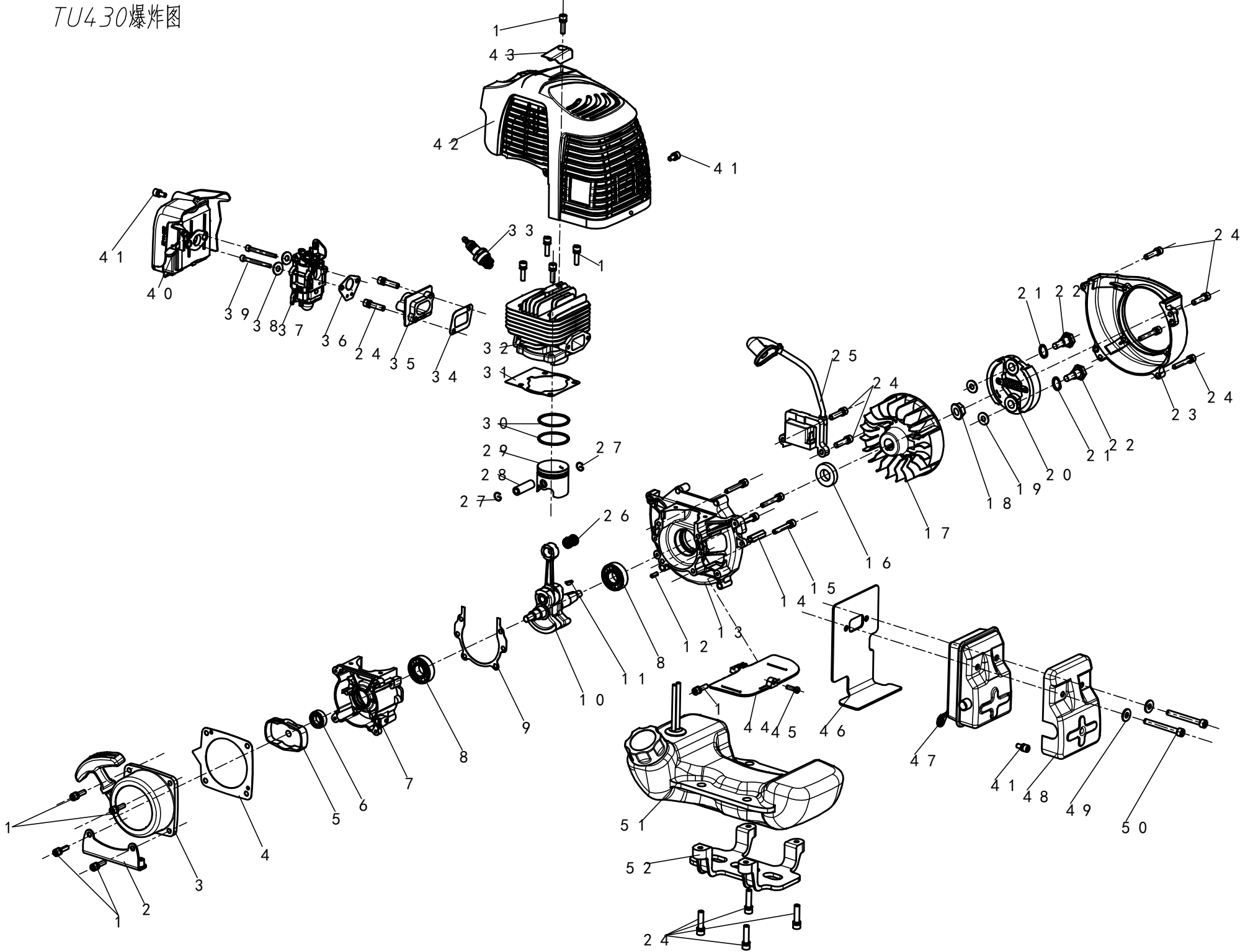


TU430爆炸图



TU430 explosion figure

page1/2

NO	Part num	Description(Cn)	Description(En)	Quantity
1	5230504601	内六角组合螺钉\M5X20	Hex combination screw \ M5 x 20	10
2	5150140801	330油壶压板	330 oil pot press plate	1
3	4030504601	415B易启动器	415 b easy starter	1
4	5150107401	415B\520B启动器垫片	415 b, 520 b \ starter gasket	1
5	4010503501	415B拨盘\双拨爪\星天具	415B dial, double dialing Claw / star	1
6	5110136501	油封\丙烯\12X22X7	Oil seal, propylene, 12 x 22 x 7	1
7	5180122601	415B小箱体	415 b small box	1
8	5300100101	6202深沟球轴承	Deep groove ball bearing 6202	2
9	5860102301	415B\520B箱体垫	415 b, 520 b \ box pad	1
10	5320103901	415B曲轴连杆	415B crankshaft connecting rod	1
11	5290200101	半圆键	woodruff key	1
12	5290107401	圆柱销	Cylindrical pin	2
13	5180122501	415B大箱体	415 b big box	1
14	5231600301	外六角螺栓\M5\柱长26MM	External hexagonal stud \ M5 \ column is 26 MM	1
15	5230503801	内六角组合螺钉\M5X35	Hex combination screw \ M5 x 35	4
16	5110136601	油封\丙烯\15X30X7	Oil seal, propylene, 15 x 30 x 7	1
17	4010402701	415B\520B飞轮	415 b / 520 b flywheel	1
18	5250502501	六角法兰面螺母\M8X1.25\厚10	Hex flange surface nut, M8 10 x 1.25	1
19	5260107701	平垫片\8X16X1	Flat washers, 8 x 16 x 1	2
20	4030101101	415B两蹄块离合器\粉末冶金	415 b two shoe block clutch	1
21	5260108801	鞍形垫\10.5X17X0.5\黑色	Saddle pad \ 10.5 x 17 x 0.5 \ black	2
22	5239907901	外六角台阶螺钉\M8X25	Outside hexagonal screw \ M8 x 25 steps	2
23	5180121701	415B边盖	415 b side cover	1
24	5230503901	内六角组合螺钉\M5X25	Hex combination screw \ M5 x 25	12
25	5810102901	TU430高压包	TU430 ignition coil	1
26	5300300301	滚针轴承\K101316	Needle roller bearing \ K101316	1
27	5275100801	415B活塞销卡簧\孔用钢丝挡圈-E型	Spring 415 b piston pin card	2
28	5290102501	415B活塞销	415 b piston	1
29	5180300701	415B活塞\外径39.7	415 b piston pin	1
30	5330100701	415B活塞环	415 b piston ring	2
31	5860102401	415B\520B气缸垫	415 b, 520 b \ cylinder pad	1
32	5180204101	415B气缸	415 b cylinder	1
33	5818001301	火花塞	The spark plug	1
34	5860102501	415B\520B进气管垫	415 b, 520 b \ intake pipe pad	1
35	5010129801	415B\520B进气管	415 b / 520 b inlet pipe	1
36	5860102601	415B\520B化油器垫	415B \ 520B carburetor pad	1
37	4030205101	415B化油器\CE	415B carburetor \ CE	1
38	5260101601	平垫片5.5x12x1	Flat washers, 5.5 x 12 x 1	2

TU430 explosion figure

page2/2

NO	Part num	Description(Cn)	Description(En)	Quantity
39	5230604201	内六角螺钉\M5X50	Socket head cap screw \ M5 x 50	2
40	5010248201	TU430空滤器总成	TU430 air filter assembly	1
41	5230504001	内六角组合螺钉\M5X12	Hex combination screw \ M5 x 12	3
42	5010248601	40-5K缸体罩	40-5 k cylinder cover	1
43	5010248601	压板	clamp	1
44	5010295901	TU430隔热板	TU430 insulation board	1
45	5240201201	十字盘头自攻螺钉ST4x12	Cross disc self tapping screw ST4x12	1
46	5870101601	TU430消音器垫\石墨	TU430 muffler pad \ graphite	1
47	4020103401	415B\520B消音器	415 b, 520 b muffler	1
48	4020102801	415B\520B消音器隔热罩	415 b, 520 b \ muffler insulation plate	1
49	5260107801	平垫片\6X12X1.6	Flat gasket \ 6 x 12 x 1.6	2
50	5231002001	内六角螺钉\M6X55	Socket head cap screw \ M6 x 55	2
51	5010267701	520B油壶\黑色油壶盖	520B oil pot \ black oil pot cover	1
52	5010130602	520B油壶支架\黑色	520B oil pot bracket \ black	1