



# **PARTS CATALOG**

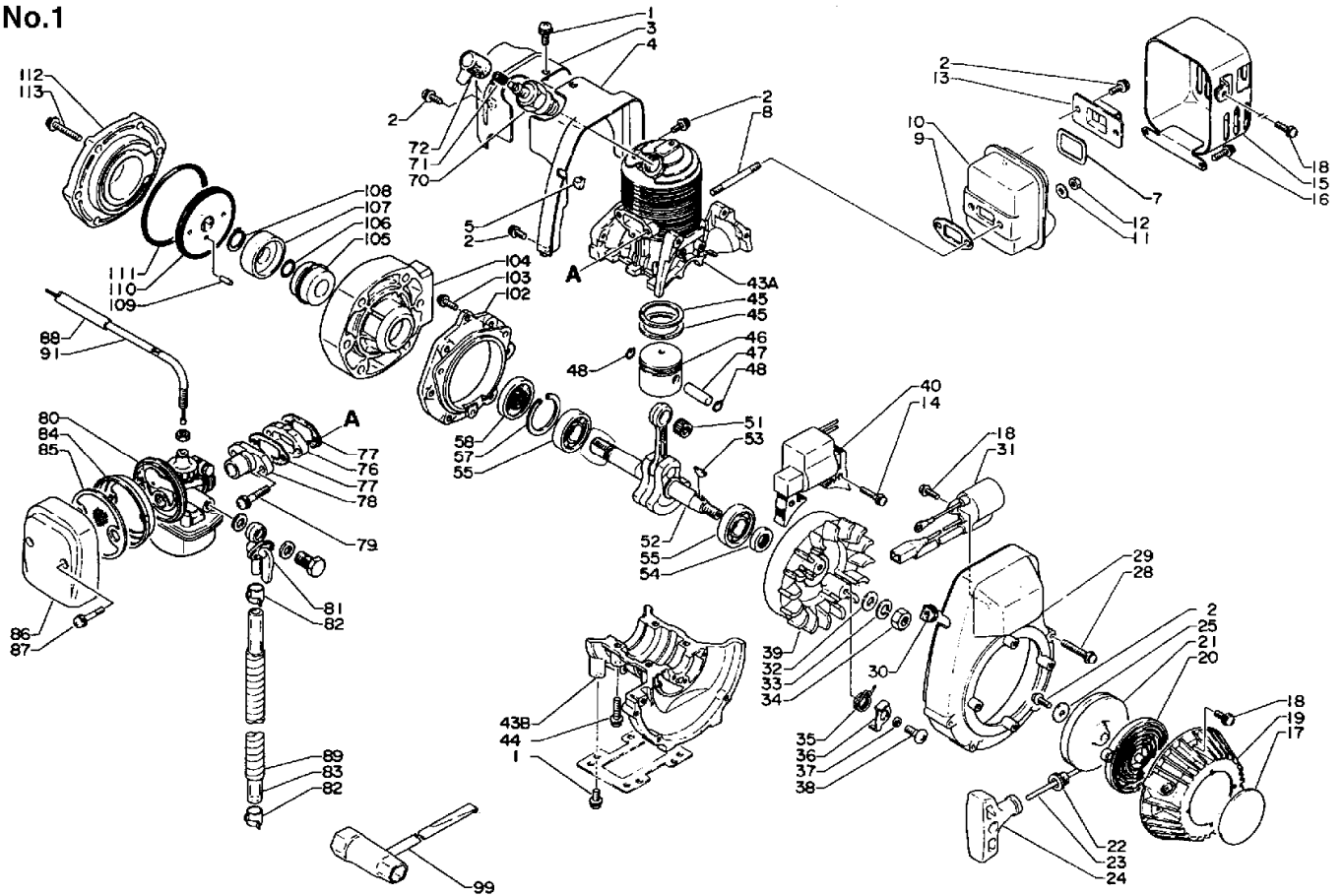
## **POWER SPRAYER SHR-200E**



SHR-200E

# 1. Cylinder, Crankcase, Starter, Magneto, Air Cleaner, Muffler

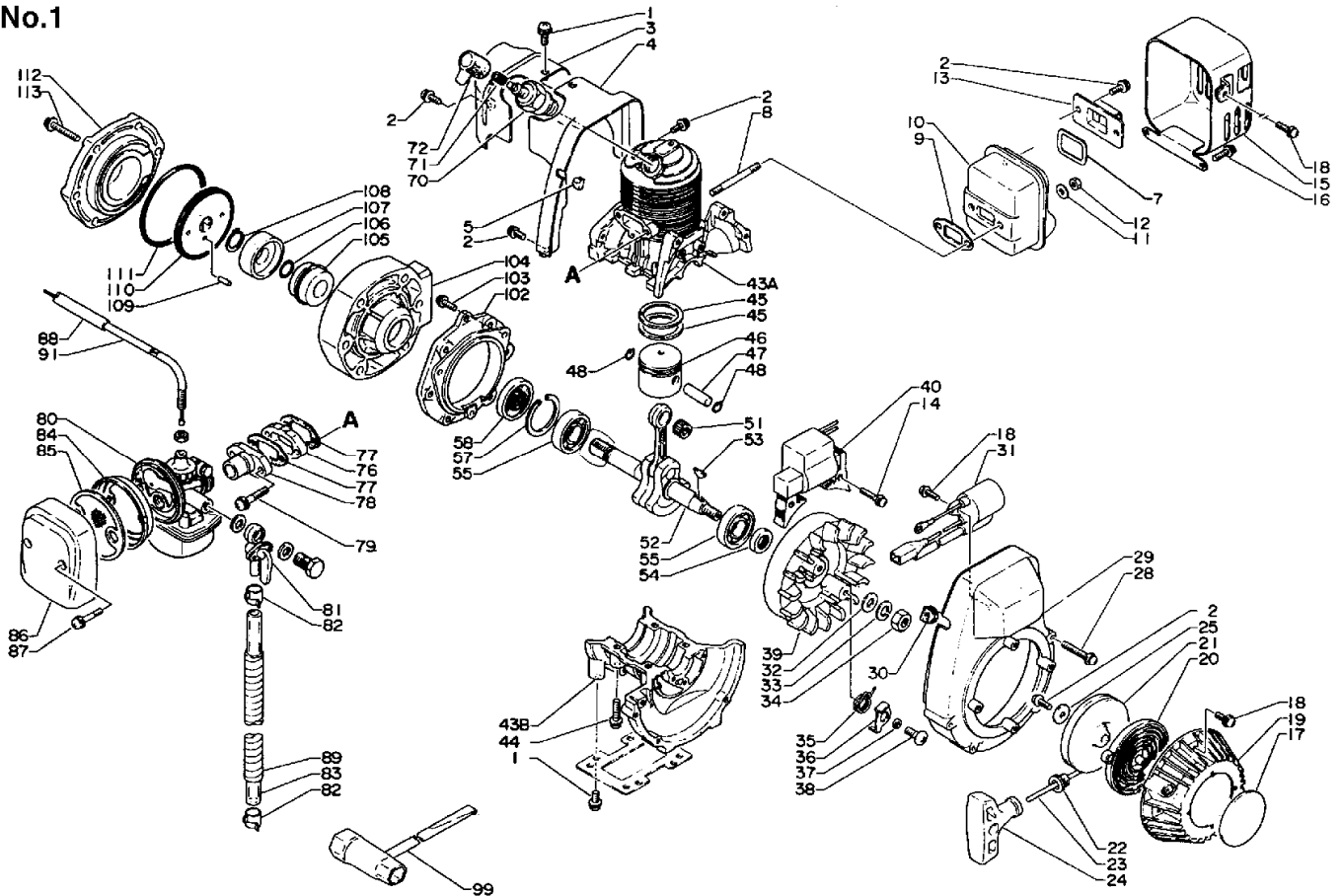
No.1



KEY	LV	PART NUMBER	Q'TY	DESCRIPTION	REMARKS	NOTE1	NOTE2
1		900242-05010	5	SCREW 5*10	5*10		
2		900242-04010	5	SCREW 4*10	4*10		
3		101529-10510	1	PLATE, GUIDE (BL)			
4		101514-08020	1	COVER, CYLINDER (BL)			
5		152115-05530	1	BUSHING			
7		145866-10610	1	GASKET, MUFFLER LID			
8		101014-00560	2	STUD, MUFFLER			
9		145510-08021	1	GASKET, MUFFLER			
10		145858-08021	1	MUFFLER			
11		900603-00005	2	WASHER 5	5.5*12*0.8		
12		900560-00005	2	NUT, LOCK 5	5		
13		145809-10510	1	LID, MUFFLER			
14		900242-04020	2	SCREW 4*20	4*20		
15		145621-10510	1	COVER, MUFFLER			
16		900242-04012	2	SCREW 4*12	4*12		
17		890112-26730	1	LABEL, ECHO			
18		900242-04014	7	SCREW 4*14	4*14		
		177200-08020	1	STARTER ASS'Y			
2	+	900242-04010	1	SCREW 4*10	4*10		
19	+	177209-08020	1	CASE, STARTER (BL)			
20	+	177220-06530	1	SPRING, REWIND			
21	+	177215-04920	1	DRUM, STARTER			
22	+	177227-05330	1	GUIDE, ROPE			
23	+	177226-06530	1	ROPE, STARTER	3.0*850		
24	+	177228-06530	1	GRIP, STARTER			
25	+	177214-04630	1	WASHER	4.1*15.5*1T		

## 1. Cylinder, Crankcase, Starter, Magneto, Air Cleaner, Muffler

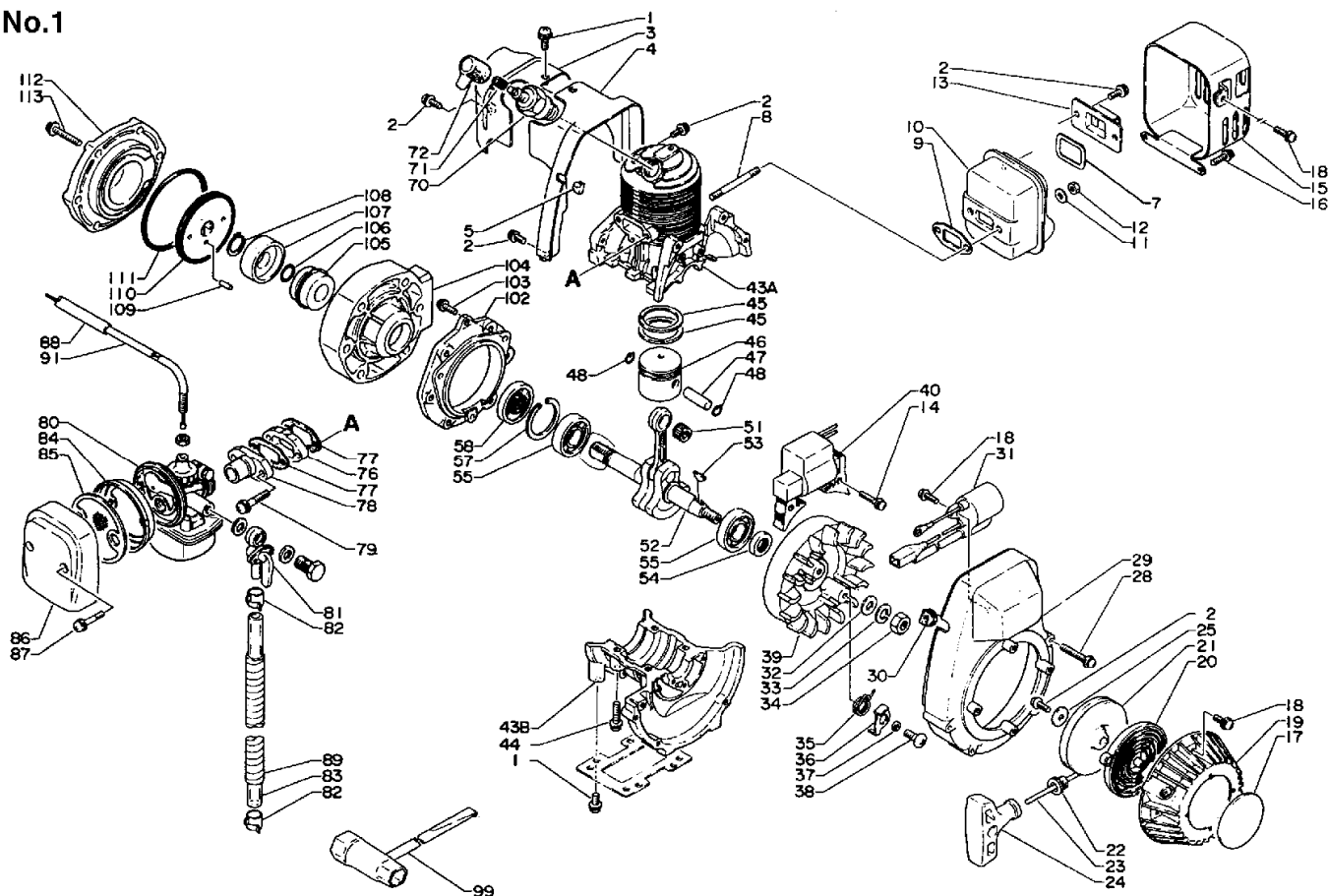
No.1



KEY	LV	PART NUMBER	Q'TY	DESCRIPTION	REMARKS	NOTE1	NOTE2
28		900242-04040	4	SCREW 4*40	4*40 W,SWツキ		
29		101511-10510	1	COVER, FAN (BS)			
30		152112-05730	1	BUSHING			
31		156626-08020	1	COIL, IGNITION			
32		900600-00008	1	WASHER 8	8		
33		900605-00008	1	WASHER, SPRING 8	8		
34		900500-00008	1	NUT 8	8*P1.25		
35		177234-08020	2	SPRING, RETURN			
36		177218-04920	2	PAWL, STARTER			
37		177247-04630	2	SPACER, RATCHET	5.2*8*2.1		
38		900216-05014	2	SCREW 5*14	5*14		
39		156801-08021	1	FLYWHEEL			
40		156601-08020	1	C.D. IGNITION MODULE			
43		100200-08022	1	CRANKCASE SET W/CYL.			
44		900242-05030	4	SCREW 5*30	5*30		
45		100011-05330	2	RING, PISTON			
46		100010-09030	1	PISTON			
47		100013-10210	1	PIN, PISTON			
48		100015-04630	2	CIRCLIP, PISTON PIN			
51		100012-08020	1	BEARING, NEEDLE	8*12*9.8		
52		100100-10511	1	CRANKSHAFT ASSY			
53		100142-00310	1	KEY, WOODRUFF (M)			
54		100212-04630	1	OILSEAL	ISMX12*19*4		
55		900810-36201	2	BEARING, BALL 6201	6201/C3	Sus. by 94035-36201	
55		94035-36201	2	BEARING BALL	6201X3JR2C3		

# 1. Cylinder, Crankcase, Starter, Magneto, Air Cleaner, Muffler

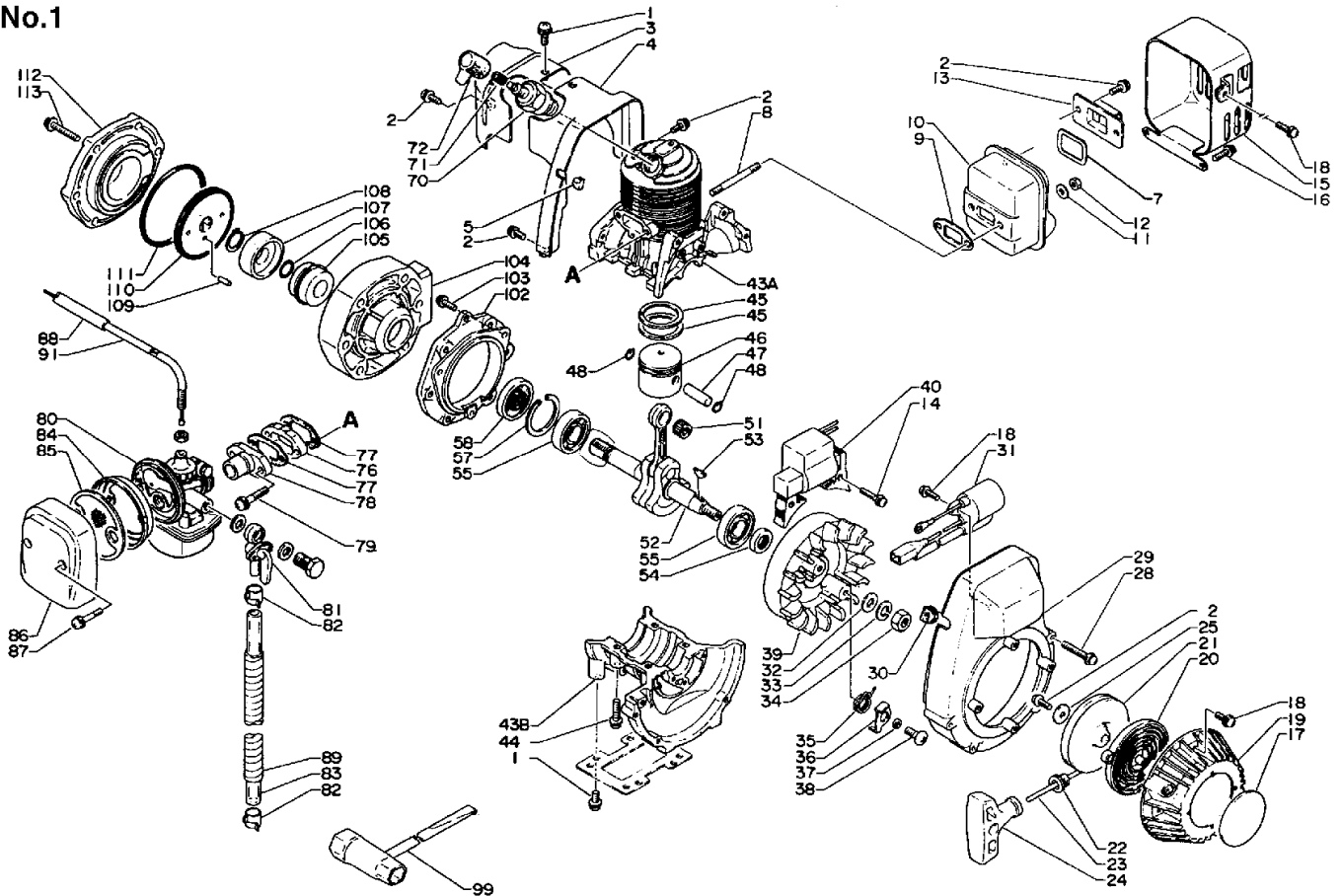
No.1



KEY	LV	PART NUMBER	Q'TY	DESCRIPTION	REMARKS	NOTE1	NOTE2
57		900702-00032	1	CIRCLIP 32	CR-32		
58		100213-03930	1	OILSEAL	ISM $\times$ 12 $\times$ 32 $\times$ 5.5	Sus. by 100212-03930	
58		100212-03930	1	OILSEAL	ISCX12 $\times$ 32 $\times$ 5.5		
70		159010-00330	1	PLUG, SPARK (BM-6A)	BM-6A		
71		159011-00510	1	COIL, SPARK PLUG CAP		Sus. by 159011-03432	
71		159011-03432	1	COIL, SPARK PLUG			
72		159012-01620	1	CAP, SPARK PLUG			
76		130017-21230	1	INSULATOR			
77		130010-08421	2	GASKET			
78		130510-21230	1	ADAPTER, INTAKE			
79		900242-05025	2	SCREW 5 $\times$ 25	5 $\times$ 25		
80		120000-10512	1	CARBURETOR ASSY			
81		132200-00512	1	VALVE ASS'Y, FUEL			
82		357013-00210	2	CLIP 11	11 $\approx$ リ	Sus. by 132013-14010	
82		132013-14010	2	BAND	10.5MM		
83		132010-10510	1	PIPE, FUEL	7 $\times$ 11 $\times$ 320		
84		130314-05530	1	CASE, AIR CLEANER			
85		130310-05730	1	FILTER, AIR			
86		130313-05530	1	COVER, AIR CLEANER			
87		900242-04028	2	SCREW 4 $\times$ 28	4 $\times$ 28		
88		178127-10510	1	TUBE, COVER	8 $\times$ 9 $\times$ 110B		
89		132015-10510	1	COVER, PROTECTIVE			

# 1. Cylinder, Crankcase, Starter, Magneto, Air Cleaner, Muffler

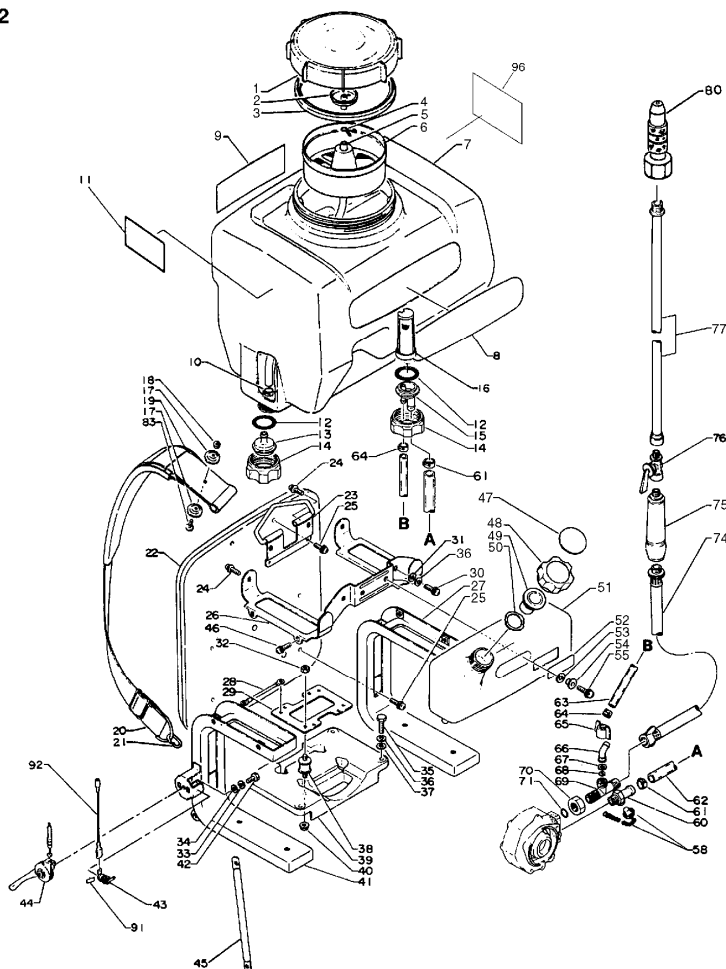
No.1



KEY	LV	PART NUMBER	Q'TY	DESCRIPTION	REMARKS	NOTE1	NOTE2
91		178001-10510	1	WIRE, THROTTLE			
99		895410-03930	1	WRENCH, W/S. DRIVER			
102		100280-10510	1	BRACKET, PUMP			
103		900242-05016	3	SCREW 5*16	5*16		
104		405210-10512	1	CASING, PUMP			
105		405100-10511	1	SEAL, MECHANICAL		Sus. by 405100-11010	
105		405100-11010	1	SEAL, MECHANICAL			
106		405111-10510	1	O-RING		Sus. by 900724-30010	
106		900724-30010	1	O-RING	S-10 4D		
107		405103-10510	1	PLATE, DRIVE			
109	+	405113-10510	1	PIN			
108		900704-00012	1	CIRCLIP 12	CS-12 SUS		
110		405110-10512	1	IMPELLER			
111		405212-10510	1	O-RING (S-67)		Sus. by 900724-30067	
111		900724-30067	1	O-RING	S-67		
112		405211-10511	1	LID, PUMP			
113		900242-05040	6	SCREW 5*40	5*40		

## 2. Fuel Tank, Harness, Chemical Tank

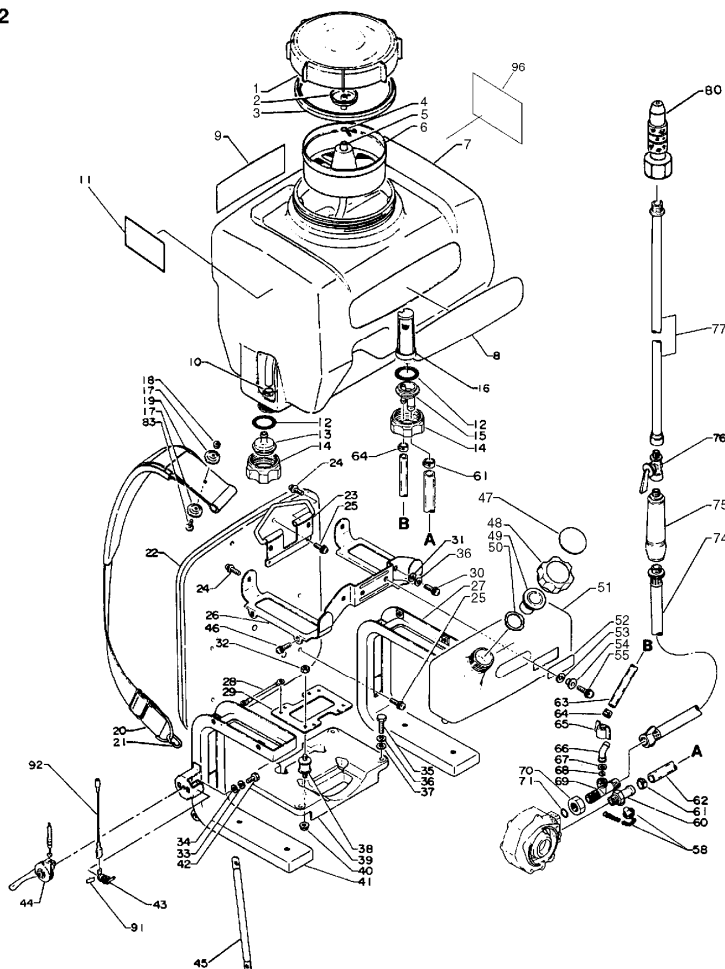
No.2



KEY	LV	PART NUMBER	Q'TY	DESCRIPTION	REMARKS	NOTE1	NOTE2
1		250001-02310	1	CAP, CHEMICAL TANK			
2	+	250013-00310	1	CAP, INSIDE			
3		250011-01110	1	GASKET, CHMCL. TANK			
4		363023-01110	1	CLIP			
5		253111-10510	1	PIPE, AIR	7*11*550.B		
6		254210-10510	1	FILTER, CHMCL. TANK			
7		253006-10510	1	TANK, CHEMICAL			
8		890135-10610	1	LABEL, CHEMICAL TANK			
9		890178-10610	1	LABEL, WARNING		Sus. by 890178-10611	
9		890178-10611	1	LABEL, CAUTION			
10		357013-00210	1	CLIP 11	11≡J	Sus. by 132013-14010	
10		132013-14010	1	BAND	10.5MM		
11		890184-10610	1	LABEL, CAUTION			
12		900720-00028	2	O-RING 28	P-28		
13		253110-10510	1	VENT			
14		357015-10511	2	NUT, HOLLOW			
15		357010-10510	1	NIPPLE, OUTLET			
16		356111-10510	1	SCREEN			
17		300328-03210	4	WASHER, HARNESS			
18		900560-00005	2	NUT, LOCK 5	5		
19		300322-03210	2	PAD, KNAPSACK HARNES		Sus. by 300322-13210	
19		300322-13210	2	PAD, KNAPSACK HARNES			
20		300301-01810	2	HARNESS, KNAPSACK			

## 2. Fuel Tank, Harness, Chemical Tank

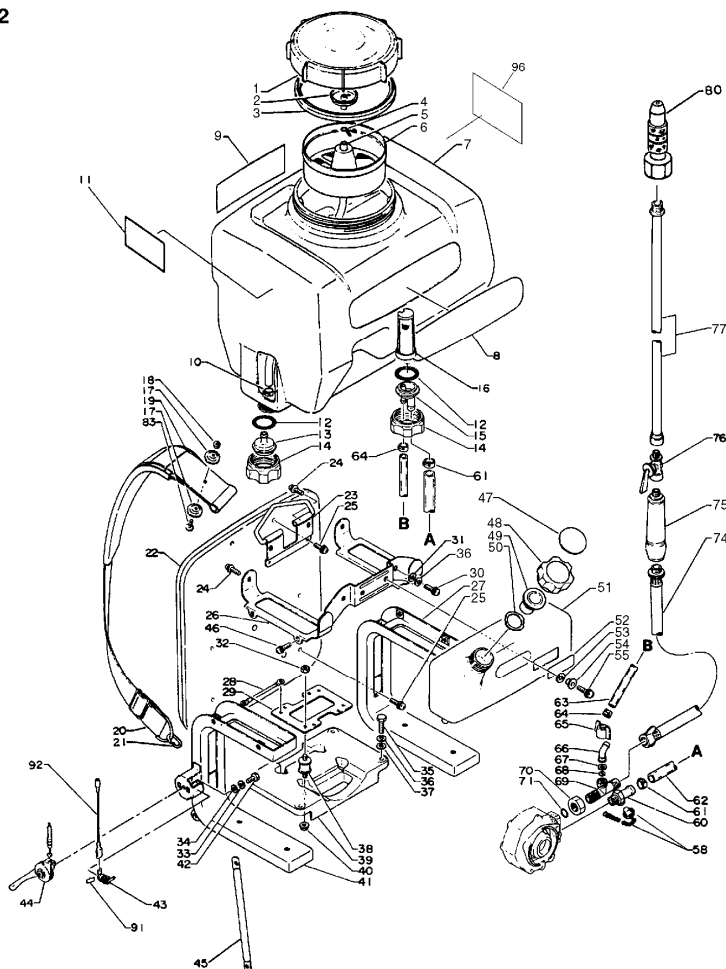
No.2



KEY	LV	PART NUMBER	Q'TY	DESCRIPTION	REMARKS	NOTE1	NOTE2
21		300319-01611	2	RING, HARNESS			
22		300105-10510	1	PAD, KNAPSACK			
23		300610-10511	1	HANGER			
24		900242-06010	4	SCREW 6*10	6*10		
25		900242-05010	6	SCREW 5*10	5*10		
26		253905-10511	1	BRACKET			
27		300005-10512	1	FRAME, KNAPSACK (BS)			
28		162010-10510	1	LEAD, GROUND			
29		104914-10510	1	BRACKET, CUSHION			
30		900220-06010	2	SCREW 6*10	6*10		
31		900600-00006	2	WASHER 6	6		
32		900515-00005	4	NUT, FLANGE 5	5		
33		900605-00005	1	WASHER, SPRING 5	5		
34		900600-00005	1	WASHER 5	5		
35		900100-06020	4	BOLT 6*20	6*20		
36		900605-00006	6	WASHER, SPRING 6	6		
37		900603-00006	4	WASHER 6	6.5*13*1		
38		104905-07230	4	CUSHION			
39		104930-10510	1	SUPPORTER			
40		900515-00005	4	NUT, FLANGE 5	5		
41		300006-10611	1	FRAME, KNAPSACK (BS)			
42		900100-05012	1	BOLT 5*12	5*12		
43		166101-10510	1	SWITCH			
44		178000-00660	1	CONTROL, THROTTLE		Sus. by 178000-12710	
44		178000-12710	1	LEVER, CONTROL			

## 2. Fuel Tank, Harness, Chemical Tank

No.2

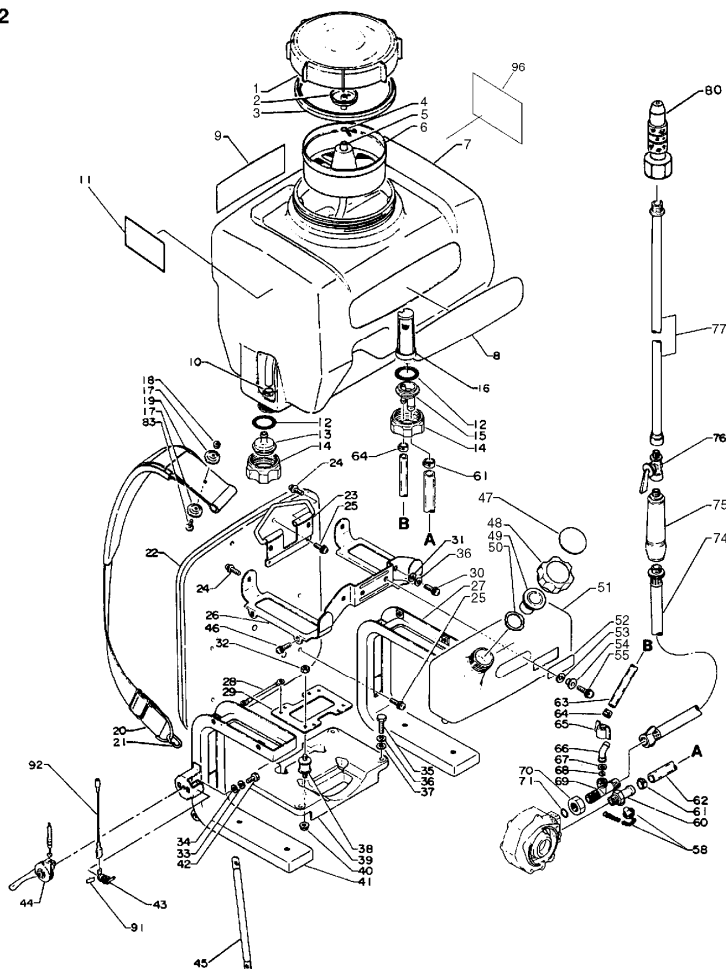


KEY	LV	PART NUMBER	Q'TY	DESCRIPTION	REMARKS	NOTE1	NOTE2
45		300029-10610	2	STAY, FRAME (BS)			
46		900242-06014	6	SCREW 6*14	6*14		
		131604-07132	1	CAP ASSY, FUEL TANK		Sus. by 131004-06210	
		131004-06210	1	CAP ASSY, FUEL			
47	+	890154-12730	1	LABEL, FUEL MIX		Can be used on the 131604-07132 only	
48	+	131017-05330	1	CAP, FUEL TANK		Can be used on the 131604-07132 only	
48	+	131017-06610	1	CAP, FUEL TANK		Can be used on the 131604-06210 only	
49	+	131003-05330	1	CUP SET, VENT			
50	+	131016-21230	1	GASKET, FUEL CAP		Can be used on the 131604-07132 only	
50	+	131016-21060	1	GASKET, FUEL CAP		Can be used on the 131604-06210 only	
51		131010-10510	1	TANK, FUEL			
52		890112-10610	1	LABEL, MODEL			
53		131925-02310	2	CUSHION			
54		131916-02310	2	SPACER, FUEL TANK			
55		900242-06020	2	SCREW 6*20	6*20		



## 2. Fuel Tank, Harness, Chemical Tank

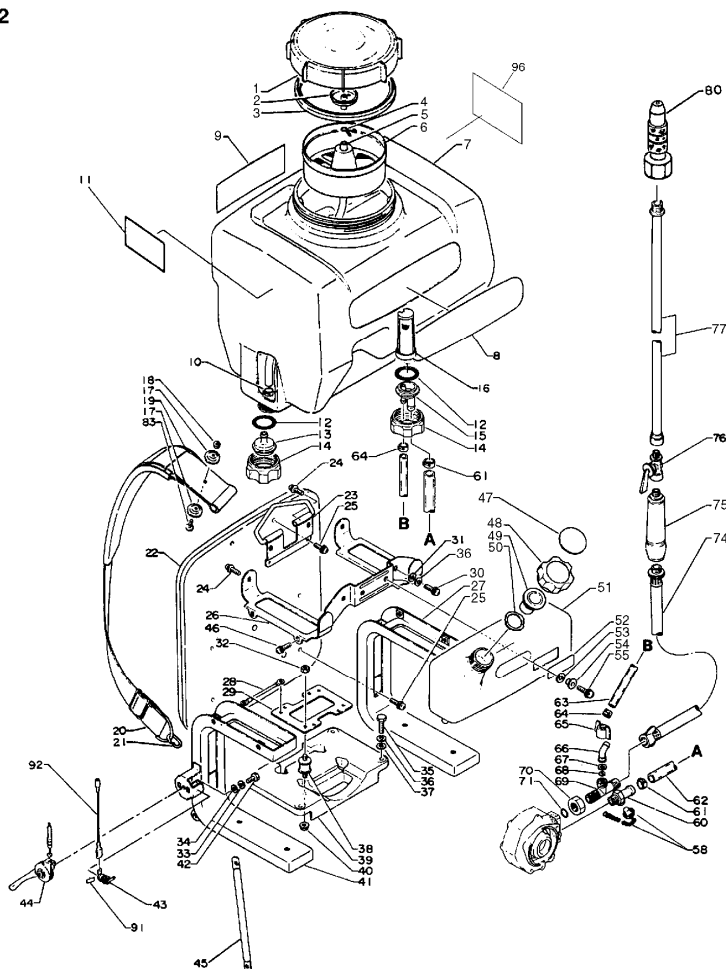
No.2



KEY	LV	PART NUMBER	Q'TY	DESCRIPTION	REMARKS	NOTE1	NOTE2
58		382004-10510	1	PLUG, DRAIN W/CHAIN			
60		382015-10510	1	JOINT, INLET			
61		357023-01110	2	CLIP 13		Sus. by V495-000310	
61		V495-000310	2	BAND			
62		382012-10510	1	PIPE, INLET	200		
63		386000-10510	1	PIPE W/CLIP			
64		386020-10510	2	CLIP, TUBE		Sus. by 386020-10511	
64		386020-10511	2	CLIP (10MM)			
65		386015-10510	1	NUT, WING			
66		386012-10511	1	NIPPLE			
67		386019-10510	1	GASKET, BYPASS NOZZLE			
68		386018-10510	1	WASHER, CIRCULAR			
69		384013-10512	1	NIPPLE			
70		384029-10510	1	NUT	1/4		
71		900722-00010	1	O-RING 10A	P-10A	Sus. by 900722-00100	
71		900722-00100	1	O-RING P-10A	P-10A(NBR)		
74		384000-10510	1	HOSE ASS'Y, SPRAY	8.5*1.2M YL		
75		224110-10510	1	GRIP		Sus. by E271-000000	
75		224110-12710	1	GRIP, NOZZLE		Sus. by E271-000000	
75		E271-000000	1	GRIP, NOZZLE			

## 2. Fuel Tank, Harness, Chemical Tank

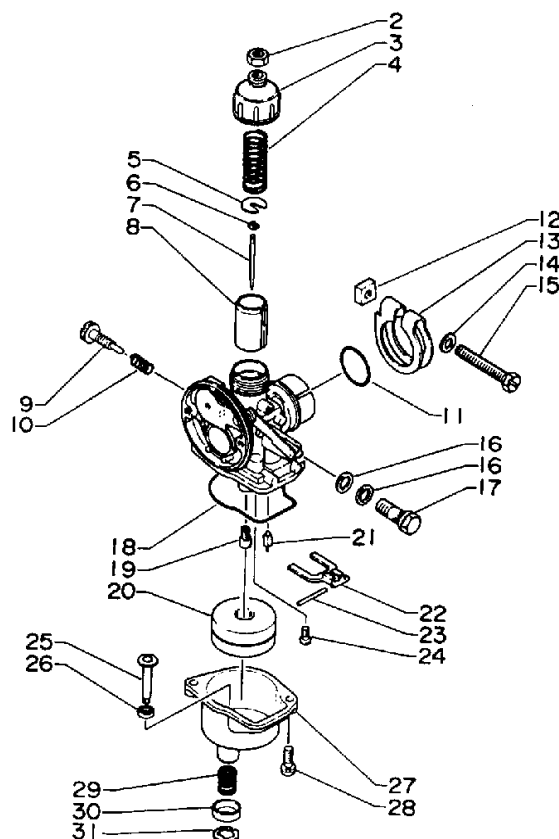
No.2



KEY	LV	PART NUMBER	Q'TY	DESCRIPTION	REMARKS	NOTE1	NOTE2
76		224400-10510	1	VALVE, NOZZLE		Sus. by E245-000050	
76		224400-11710	1	VALVE, NOZZLE	PF1/4	Sus. by E245-000050	
76		E245-000050	1	COCK, LIQUID	2-PF1/4 M*F		
77		224102-10510	1	PIPE, NOZZLE	L=720	Sus. by E270-000030	
77		E270-000030	1	PIPE, NOZZLE	AG2003-020		
80		224103-10610	1	NOZZLE, ADJUSTABLE			
83		900216-05014	2	SCREW 5*14	5*14		
91		890157-11130	1	LABEL, SWITCH			
92		162021-10610	1	LEAD			
96		892913-10610	1	LABEL, CAUTION			

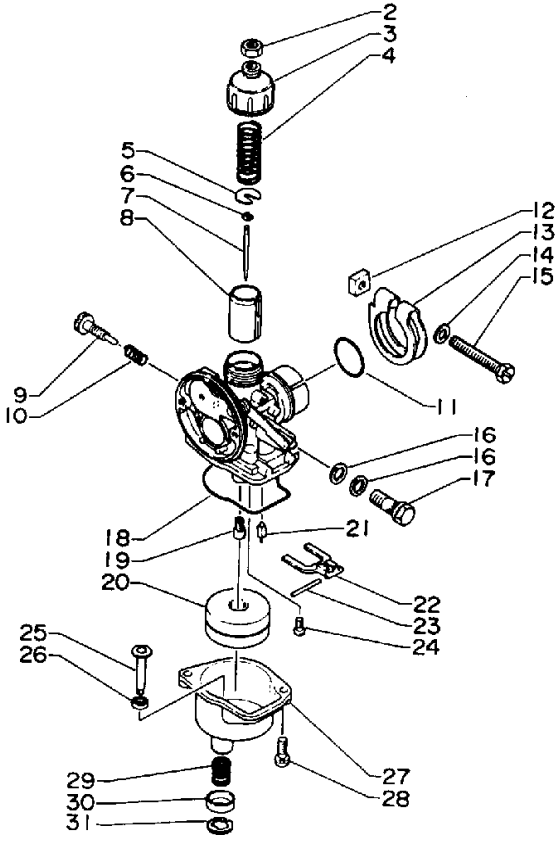
### 3. Carburetor

#### No.3



KEY	LV	PART NUMBER	Q'TY	DESCRIPTION	REMARKS	NOTE1	NOTE2
		120000-10512	1	CARBURETOR ASSY			
2	+	120111-04730	1	NUT			
3	+	120113-10211	1	COVER, TOP			
4	+	120114-01820	1	SPRING, THROTTLE			
5	+	120115-08020	1	SEAT, SPRING			
6	+	120116-10211	1	E-RING			
7	+	120103-08021	1	NEEDLE, JET W/CLIP			
8	+	120118-05731	1	VALVE, THROTTLE			
9	+	120159-04731	1	SCREW, IDLE SPEED			
10	+	120160-01321	1	SPRING			
11	+	120149-05730	1	GASKET			
12	+	120151-10210	1	NUT, OUTLET CLIP			
13	+	120146-10210	1	CLIP, OUTLET			
14	+	900600-00005	1	WASHER 5	5		
15	+	120147-08020	1	BOLT			
16	+	120130-10210	2	GASKET			
17	+	120131-00120	1	BOLT, BANJO			
18	+	120123-10210	1	GASKET, F. CHAMBER			
19	+	120122-08020	1	JET, MAIN			
20	+	120133-05730	1	FLOAT			
21	+	120102-05731	1	VALVE ASSY, NEEDLE			
22	+	120121-10210	1	ARM, FLOAT			
23	+	120132-10211	1	PIN, FLOAT ARM			
24	+	900220-04006	1	SCREW 4*6	4*6		
25	+	120177-03311	1	SHAFT, LINK			
26	+	120178-03311	1	O-RING			

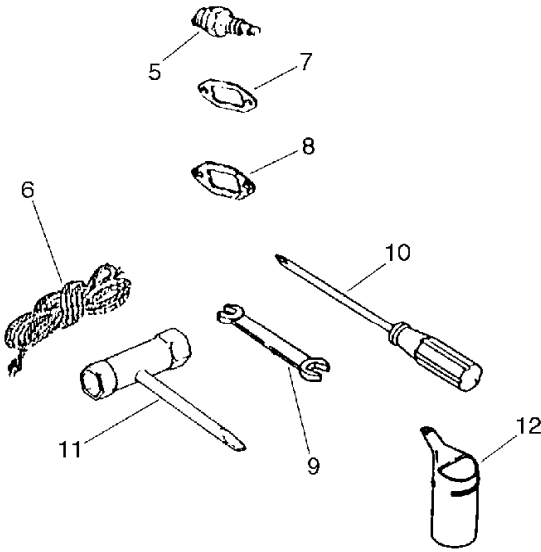
**3. Carburetor**  
No.3



KEY	LV	PART NUMBER	Q'TY	DESCRIPTION	REMARKS	NOTE1	NOTE2
27	+	120124-03311	1	CHAMBER, FLOAT			
28	+	900242-04012	2	SCREW 4*12	4*12		
29	+	120179-28930	1	SPRING, COIL			
30	+	120180-03311	1	COLLAR			
31	+	120181-03312	1	CLIP			

4. Tools

No.4



KEY	LV	PART NUMBER	Q'TY	DESCRIPTION	REMARKS	NOTE1	NOTE2
5		159010-00330	1	PLUG, SPARK (BM-6A)	BM-6A		
6		177226-06530	1	ROPE, STARTER	3.0*850		
7		145510-08021	2	GASKET, MUFFLER			
8		130010-08421	1	GASKET			
9		895123-03830	1	SPANNER 10*13			
10		895710-00430	1	DRIVER, SCREW			
11		895410-03930	1	WRENCH, W/S. DRIVER			
12		898520-17130	1	MIXER, FUEL			

**Index**

<b>Patrs Number</b>	<b>Key No.</b>	<b>Patrs Number</b>	<b>Key No.</b>	<b>Patrs Number</b>	<b>Key No.</b>
100010-09030	1 - 46	130010-08421	4 - 8	177228-06530	1 - 24
100011-05330	1 - 45	130017-21230	1 - 76	177234-08020	1 - 35
100012-08020	1 - 51	130310-05730	1 - 85	177247-04630	1 - 37
100013-10210	1 - 47	130313-05530	1 - 86	178000-00660	2 - 44
100015-04630	1 - 48	130314-05530	1 - 84	178000-12710	2 - 44
100100-10511	1 - 52	130510-21230	1 - 78	178001-10510	1 - 91
100142-00310	1 - 53	131003-05330	2 - 49	178127-10510	1 - 88
100200-08022	1 - 43	131004-06210	2 -	224102-10510	2 - 77
100212-03930	1 - 58	131010-10510	2 - 51	224103-10610	2 - 80
100212-04630	1 - 54	131016-21060	2 - 50	224110-10510	2 - 75
100213-03930	1 - 58	131016-21230	2 - 50	224110-12710	2 - 75
100280-10510	1 - 102	131017-05330	2 - 48	224400-10510	2 - 76
101014-00560	1 - 8	131017-06610	2 - 48	224400-11710	2 - 76
101511-10510	1 - 29	131604-07132	2 -	250001-02310	2 - 1
101514-08020	1 - 4	131916-02310	2 - 54	250011-01110	2 - 3
101529-10510	1 - 3	131925-02310	2 - 53	250013-00310	2 - 2
104905-07230	2 - 38	132010-10510	1 - 83	253006-10510	2 - 7
104914-10510	2 - 29	132013-14010	1 - 82	253110-10510	2 - 13
104930-10510	2 - 39	132013-14010	2 - 10	253111-10510	2 - 5
120000-10512	1 - 80	132015-10510	1 - 89	253905-10511	2 - 26
120000-10512	3 -	132200-00512	1 - 81	254210-10510	2 - 6
120102-05731	3 - 21	145510-08021	1 - 9	300005-10512	2 - 27
120103-08021	3 - 7	145510-08021	4 - 7	300006-10611	2 - 41
120111-04730	3 - 2	145621-10510	1 - 15	300029-10610	2 - 45
120113-10211	3 - 3	145809-10510	1 - 13	300105-10510	2 - 22
120114-01820	3 - 4	145858-08021	1 - 10	300301-01810	2 - 20
120115-08020	3 - 5	145866-10610	1 - 7	300319-01611	2 - 21
120116-10211	3 - 6	152112-05730	1 - 30	300322-03210	2 - 19
120118-05731	3 - 8	152115-05530	1 - 5	300322-13210	2 - 19
120121-10210	3 - 22	156601-08020	1 - 40	300328-03210	2 - 17
120122-08020	3 - 19	156626-08020	1 - 31	300610-10511	2 - 23
120123-10210	3 - 18	156801-08021	1 - 39	356111-10510	2 - 16
120124-03311	3 - 27	159010-00330	1 - 70	357010-10510	2 - 15
120130-10210	3 - 16	159010-00330	4 - 5	357013-00210	1 - 82
120131-00120	3 - 17	159011-00510	1 - 71	357013-00210	2 - 10
120132-10211	3 - 23	159011-03432	1 - 71	357015-10511	2 - 14
120133-05730	3 - 20	159012-01620	1 - 72	357023-01110	2 - 61
120146-10210	3 - 13	162010-10510	2 - 28	363023-01110	2 - 4
120147-08020	3 - 15	162021-10610	2 - 92	382004-10510	2 - 58
120149-05730	3 - 11	166101-10510	2 - 43	382012-10510	2 - 62
120151-10210	3 - 12	177200-08020	1 -	382015-10510	2 - 60
120159-04731	3 - 9	177209-08020	1 - 19	384000-10510	2 - 74
120160-01321	3 - 10	177214-04630	1 - 25	384013-10512	2 - 69
120177-03311	3 - 25	177215-04920	1 - 21	384029-10510	2 - 70
120178-03311	3 - 26	177218-04920	1 - 36	386000-10510	2 - 63
120179-28930	3 - 29	177220-06530	1 - 20	386012-10511	2 - 66
120180-03311	3 - 30	177226-06530	1 - 23	386015-10510	2 - 65
120181-03312	3 - 31	177226-06530	4 - 6	386018-10510	2 - 68
130010-08421	1 - 77	177227-05330	1 - 22	386019-10510	2 - 67

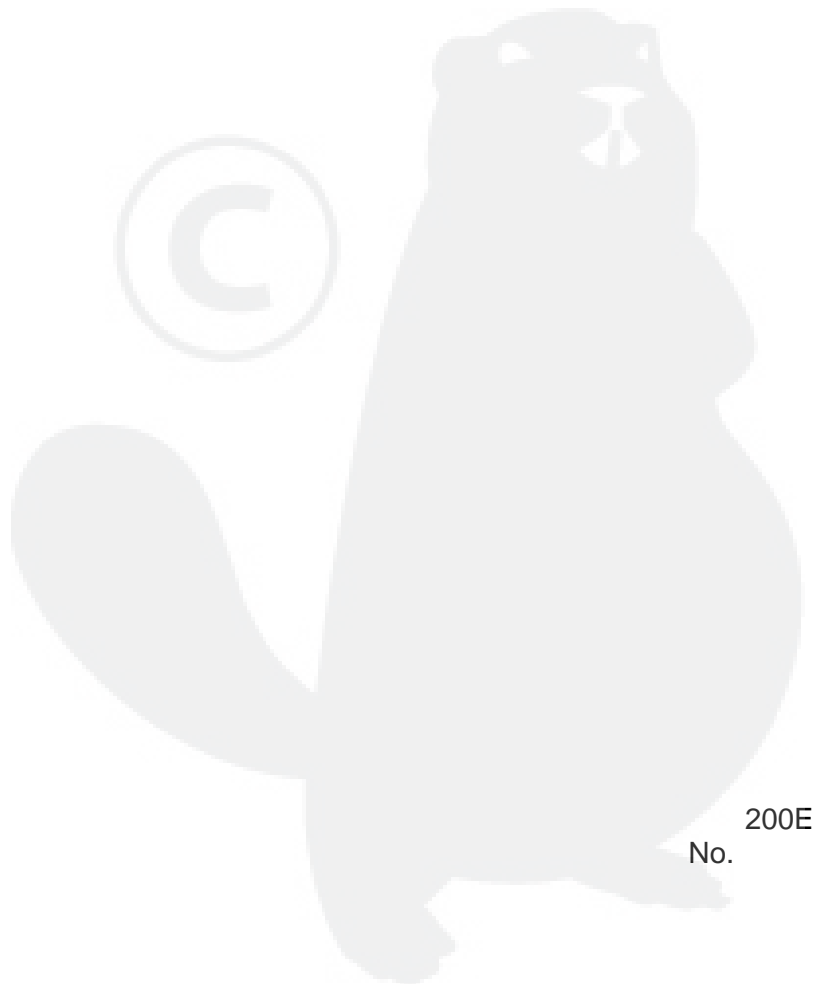
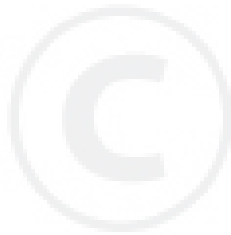
**Index**

<b>Patrs Number</b>	<b>Key No.</b>	<b>Patrs Number</b>	<b>Key No.</b>	<b>Patrs Number</b>	<b>Key No.</b>
386020-10510	2 - 64	900515-00005	2 - 32		
386020-10511	2 - 64	900515-00005	2 - 40		
405100-10511	1 - 105	900560-00005	1 - 12		
405100-11010	1 - 105	900560-00005	2 - 18		
405103-10510	1 - 107	900600-00005	2 - 34		
405110-10512	1 - 110	900600-00005	3 - 14		
405111-10510	1 - 106	900600-00006	2 - 31		
405113-10510	1 - 109	900600-00008	1 - 32		
405210-10512	1 - 104	900603-00005	1 - 11		
405211-10511	1 - 112	900603-00006	2 - 37		
405212-10510	1 - 111	900605-00005	2 - 33		
890112-10610	2 - 52	900605-00006	2 - 36		
890112-26730	1 - 17	900605-00008	1 - 33		
890135-10610	2 - 8	900702-00032	1 - 57		
890154-12730	2 - 47	900704-00012	1 - 108		
890157-11130	2 - 91	900720-00028	2 - 12		
890178-10610	2 - 9	900722-00010	2 - 71		
890178-10611	2 - 9	900722-00100	2 - 71		
890184-10610	2 - 11	900724-30010	1 - 106		
892913-10610	2 - 96	900724-30067	1 - 111		
895123-03830	4 - 9	900810-36201	1 - 55		
895410-03930	1 - 99	94035-36201	1 - 55		
895410-03930	4 - 11	E245-000050	2 - 76		
895710-00430	4 - 10	E270-000030	2 - 77		
898520-17130	4 - 12	E271-000000	2 - 75		
900100-05012	2 - 42	V495-000310	2 - 61		
900100-06020	2 - 35				
900216-05014	1 - 38				
900216-05014	2 - 83				
900220-04006	3 - 24				
900220-06010	2 - 30				
900242-04010	1 - 2				
900242-04010	1 - 2				
900242-04012	1 - 16				
900242-04012	3 - 28				
900242-04014	1 - 18				
900242-04020	1 - 14				
900242-04028	1 - 87				
900242-04040	1 - 28				
900242-05010	1 - 1				
900242-05010	2 - 25				
900242-05016	1 - 103				
900242-05025	1 - 79				
900242-05030	1 - 44				
900242-05040	1 - 113				
900242-06010	2 - 24				
900242-06014	2 - 46				
900242-06020	2 - 55				
900500-00008	1 - 34				

# YAMABIKO CORPORATION

7-2 SUEHIROCHO 1-CHOME, OHME, TOKYO 198-8760, JAPAN  
PHONE: 81-428-32-6118. FAX: 81-428-32-6145.

**ECHO**<sup>®</sup>



200E  
No.