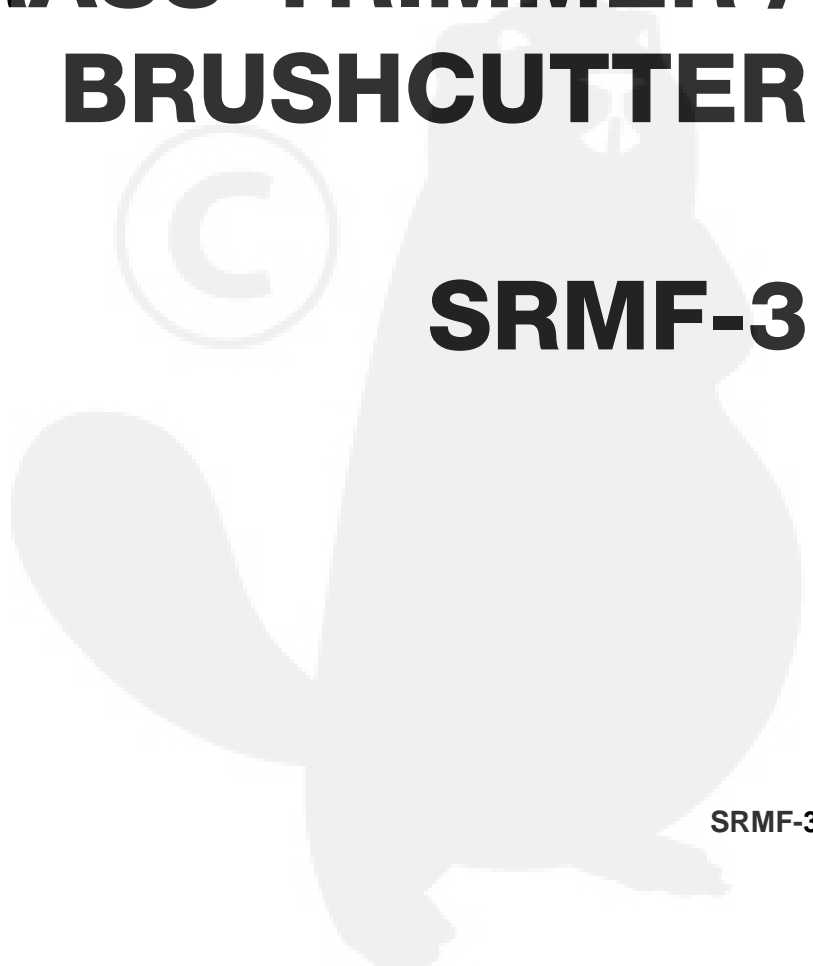




# **PARTS CATALOG**

## **GRASS-TRIMMER / BRUSHCUTTER**

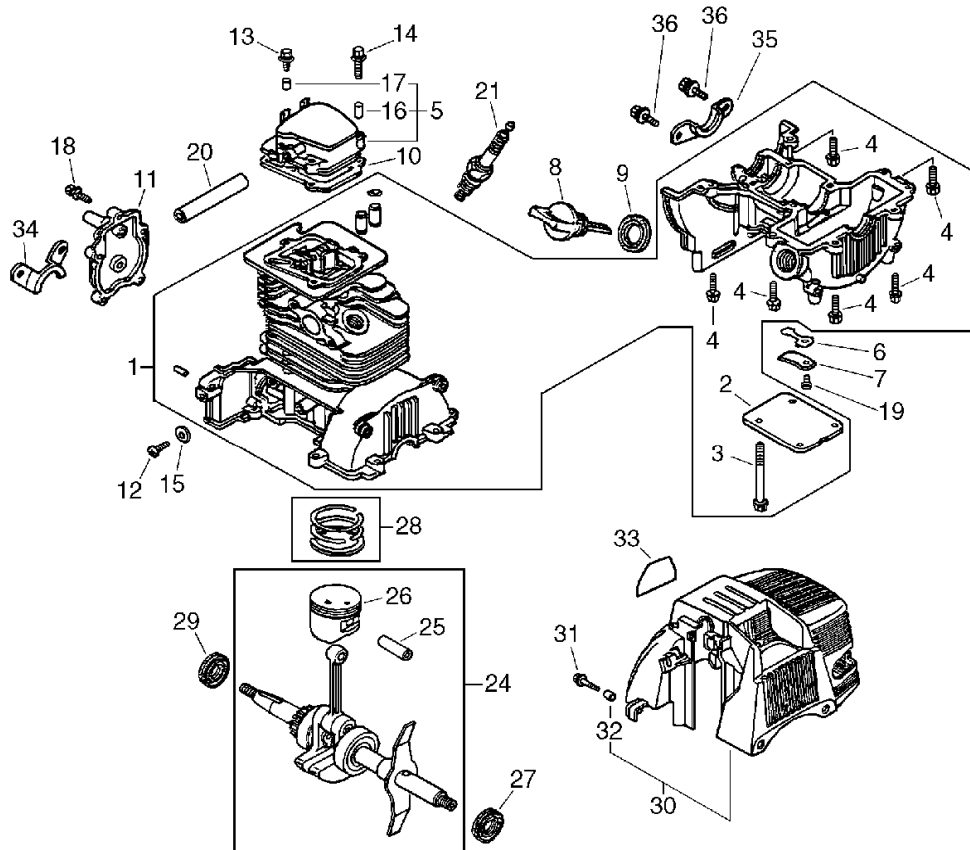
**SRMF-3**



SRMF-3

# 1. Cover Cylinder Head, Crankcase, Piston

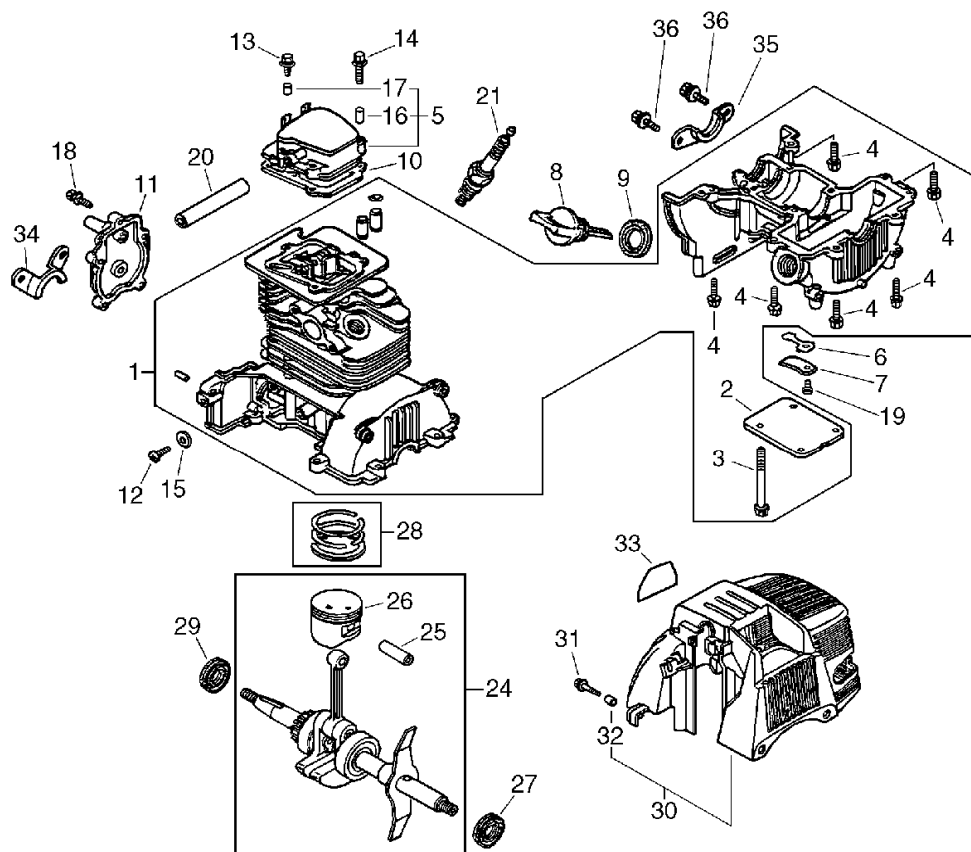
## No.1



KEY	LV	PART NUMBER	Q'TY	DESCRIPTION	REMARKS	NOTE1	NOTE2
1		11010-ZM5-010	1	CRANKCASE SET COMP			
2	+	15511-ZM3-000	1	COVER,OIL OUTLET VAL			
3	+	90003-ZM3-000	4	BOLT,FLANGE 5X55			
4	+	90005-ZM3-000	6	BOLT,FLANGE 5X18			
5		12310-ZM3-003	1	COVER COMP.HEAD			
16	+	91501-ZM3-000	2	COLLAR,HEAD COVER		Sus. by 91501-ZM3-010	
16	+	91501-ZM3-010	2	COLLAR,HEAD COVER			
17	+	91506-ZM3-000	1	COLLAR A,HEAD COVER			
6		15571-ZM3-003	1	VALVE,OIL OUTLET			
7		15572-ZM3-000	1	PLATE,STOPPER			
8		15620-ZM3-003	1	CAP,OIL FILLER			
9		15625-ZE1-003	1	PKG,OIL FILLER CA			
10		12312-ZM3-020	1	PACKING,HEAD COVER			
11		14121-ZM5-010	1	COVER,CAMSHAFT			
12		90011-ZM3-000	1	SCREW,PAN, 6X8			
13		90002-ZM3-000	1	BOLT,FLANGE 5X14			
14		90001-ZM3-000	2	BOLT,FLANGE 5X22			
15		90481-GW3-000	1	WASHER,SEALING 6.5MM			
18		93401-04016-00	5	BOLT-WASHER 4X16			
19		93500-03005-0A	1	SCREW,PAN 3X5			
20		95005-70068-30	1	TUBE, 7X68 (95005-70			
21		98056-55777	1	PLUG,SPARK (CR5HSB)			
24		13310-ZM5-010	1	CRANKSHAFT COMP		Sus. by 13310-ZM5-030	

# 1. Cover Cylinder Head, Crankcase, Piston

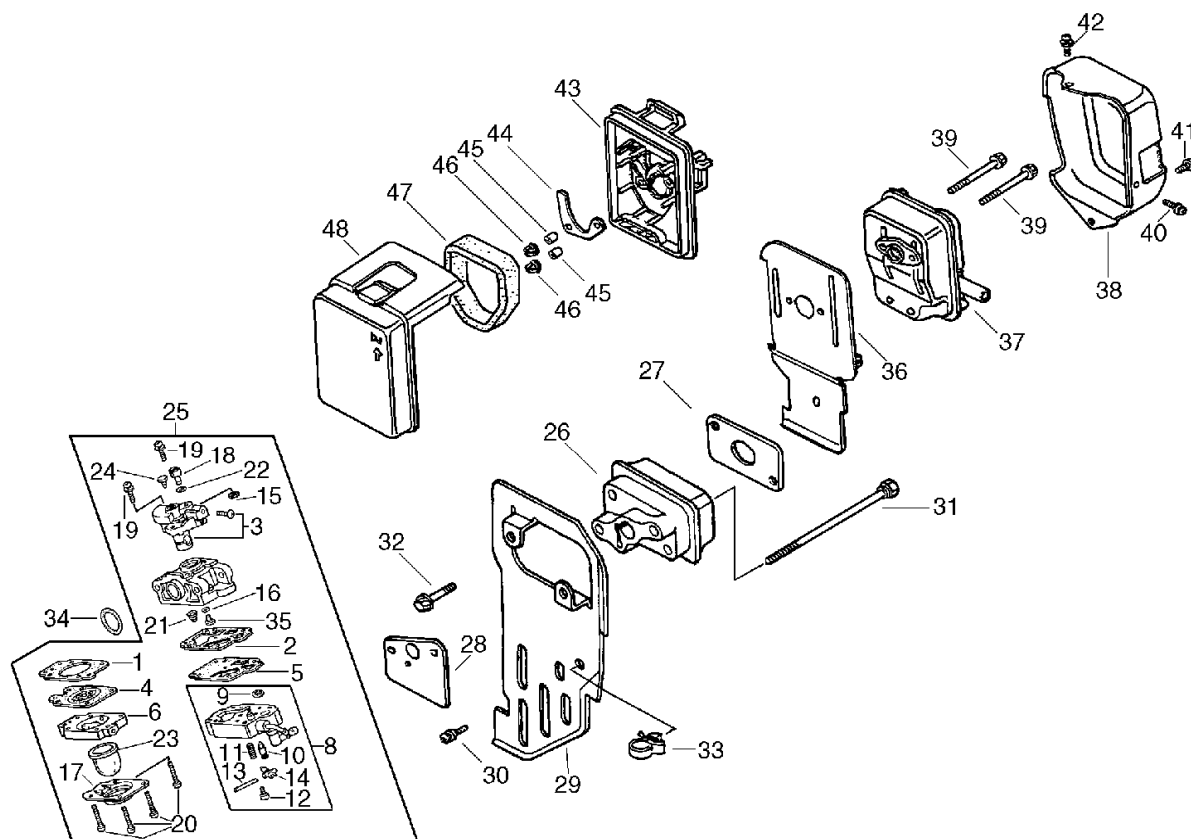
No.1



KEY	LV	PART NUMBER	Q'TY	DESCRIPTION	REMARKS	NOTE1	NOTE2
24		13310-ZM5-020	1	CRANKSHAFT COMP		Sus. by 13310-ZM5-030	
24		13310-ZM5-030	1	CRANKSHAFT COMP			
25	+	13111-ZM5-000	1	PIN,PISTON			
26	+	13101-ZM5-000	1	PISTON		Sus. by 13101-ZM5-020	
26	+	13101-ZM5-020	1	PISTON			
27		91213-ZM3-003	1	OIL SEAL, 12X25X6			
28		13010-ZM5-000	1	RING SET,PISTON			
29		91214-ZM3-003	1	OIL SEAL, 15X25X6			
30		19720-ZM3-U30	1	COVER COMP., TOP *T8			
32	+	91502-ZM3-000	2	COLLAR, TOP COVER			
31		90112-GK8-010	2	BOLT, FLANGE, 5X22			
33		890115-66630	1	LABEL, MODEL		Sus. by 890115-66631	
33		890115-66631	1	LABEL, MODEL			
34		11113-ZM3-000	1	GUARD A,GRASS			
35		11114-ZM3-000	1	GUARD A,GRASS			
36		93401-04010-00	2	BOLT-WASHER 4X10			

## 2. Air Cleaner, Muffler, Carburetor

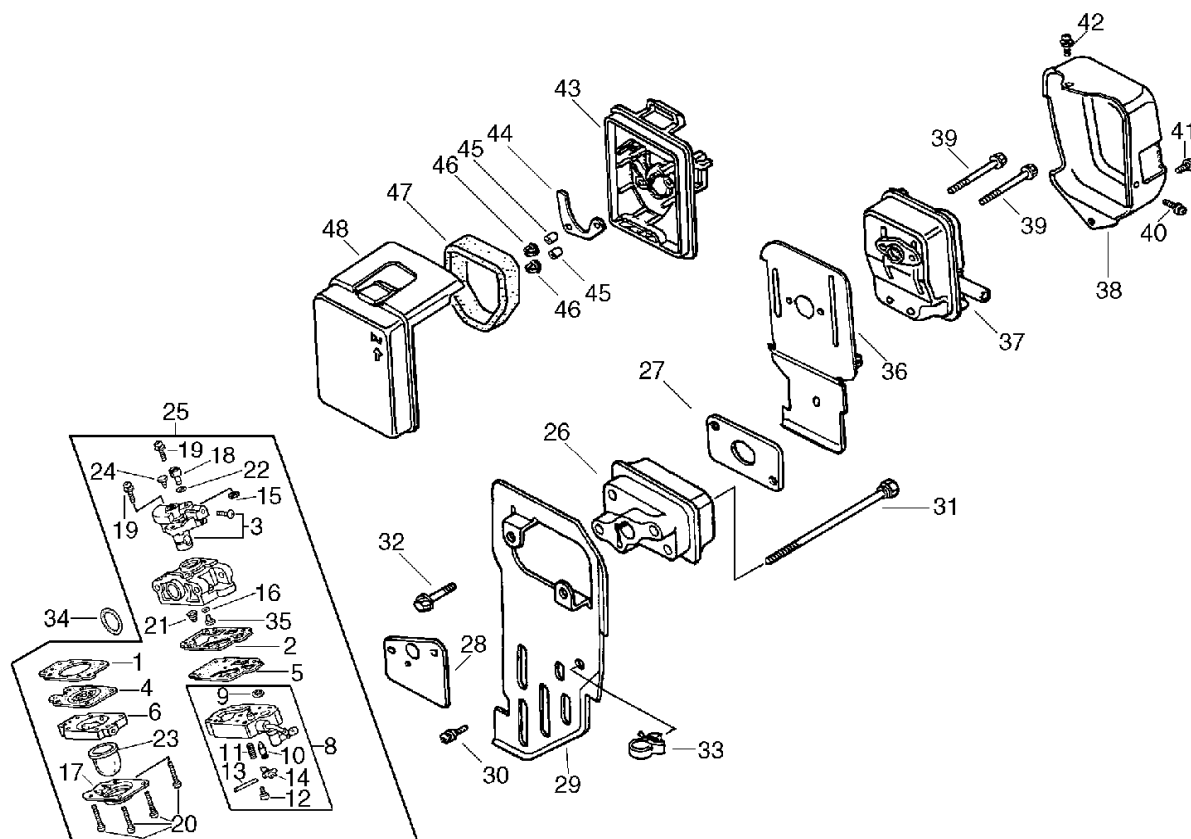
No.2



KEY	LV	PART NUMBER	Q'TY	DESCRIPTION	REMARKS	NOTE1	NOTE2
25		16100-ZM5-814	1	CARBURETOR ASSY.		Sus. by 16100-	
25		16100-ZM5-824	1	CARBURETOR ASSY		ZM5-824	
1	+	16010-ZM3-004	1	GASKET, METERING DIA			
2	+	16011-ZM3-014	1	GASKET, PUMP			
3	+	16012-ZM5-004	1	THROTTLE VALVE ASSY			
4	+	16013-ZM3-004	1	DIAPHRAGM ASSY., MET			
5	+	16014-ZM3-004	1	DIAPHRAGM, PUMP			
6	+	16017-ZM3-004	1	BODY ASSY.,AIR PURGE			
8	+	16015-ZM3-004	1	BODY ASSY.,PUMP			
9	++	16018-ZM3-004	1	SCREEN.,INRET			
10	++	16019-ZM3-004	1	VALVE, INLET NEEDLE			
11	++	16020-ZM3-004	1	SPRING, METERING LEV			
12	++	16021-ZM3-004	1	SPRING, METERING LEV			
13	++	16022-ZM3-004	1	PIN, METERING LEVER			
14	++	16023-ZM3-004	1	LEVER, METERING			
15	+	16024-ZM3-004	1	RING, SPRING RETAINI			
16	+	16025-ZM3-004	1	O-RING			
17	+	16026-ZM3-004	1	COVER, PRIMER PUMP			
18	+	16027-ZM3-004	1	SWIVEL			
19	+	16028-ZM3-004	2	SCREW, THROTTLE COVE			
20	+	16029-ZM3-004	4	SCREW, PUMP COVER			
21	+	16030-ZM3-004	1	SPRING, PUMP			
22	+	16031-ZM3-004	1	WASHER			
23	+	16032-ZM3-004	1	PUMP, PRIMER			
24	+	16033-ZM3-004	1	PLUG			

## 2. Air Cleaner, Muffler, Carburetor

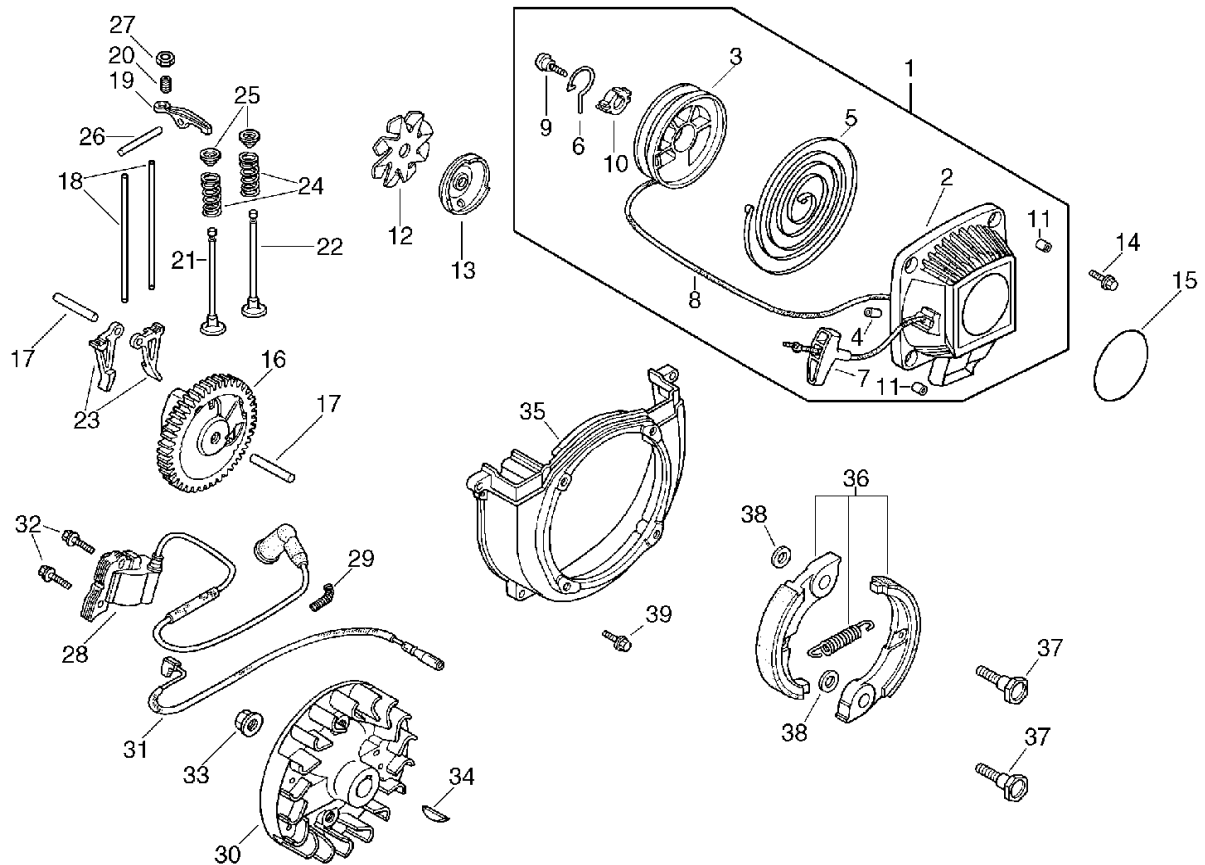
No.2



KEY	LV	PART NUMBER	Q'TY	DESCRIPTION	REMARKS	NOTE1	NOTE2
35	+	99101-ZM3-042	1	JET (#42)			
26		16211-ZM3-U30	1	INSULATOR,CARBURETOR			
27		16212-ZM3-000	1	PACKING, INSULATOR			
28		16221-ZM3-000	1	PACKING, CABURETOR			
29		19651-ZM3-U30	1	GUIDE,AIR INLET			
30		93894-05010-00	1	SCREW-WASHER, 5X10			
31		90010-ZM3-000	2	BOLT, HEX., 5X75			
32		90112-ZM3-U30	2	BOLT, FLANGE 5X32			
33		90659-680-013	1	CLIP, WIRE HARNESS			
34		91301-ZM3-000	1	O-RING 14.8X2.4			
36		18515-ZM3-810	1	GUIDE,AIR EX			
37		18310-ZM3-000	1	MUFFLER COMP.			
38		19722-ZM3-000	1	INNER COVER, TOP			
39		90004-ZM3-000	2	BOLT FLANGE, 5X50			
40		93891-05008-00	1	SCREW-WASHER, 5X8			
41		93894-05010-00	1	SCREW-WASHER, 5X10			
42		93894-05016-00	1	SCREW-WASHER, 5X16			
43		17220-ZM3-000	1	CASE COMP., AIR CLEA			
44		17204-ZM3-000	1	PLATE, OIL TRAP			
45		91503-ZM3-000	2	COLLER, AIR CLEANER			
46		94050-05000	2	NUT, FLANGE, 5MM			
47		17211-ZM3-000	1	ELEMENT, AIR CLENER			
48		17231-ZM3-000	1	COVER, AIR CLEANER *			

### 3. Starter, Magneto, Clutch, Camshaft

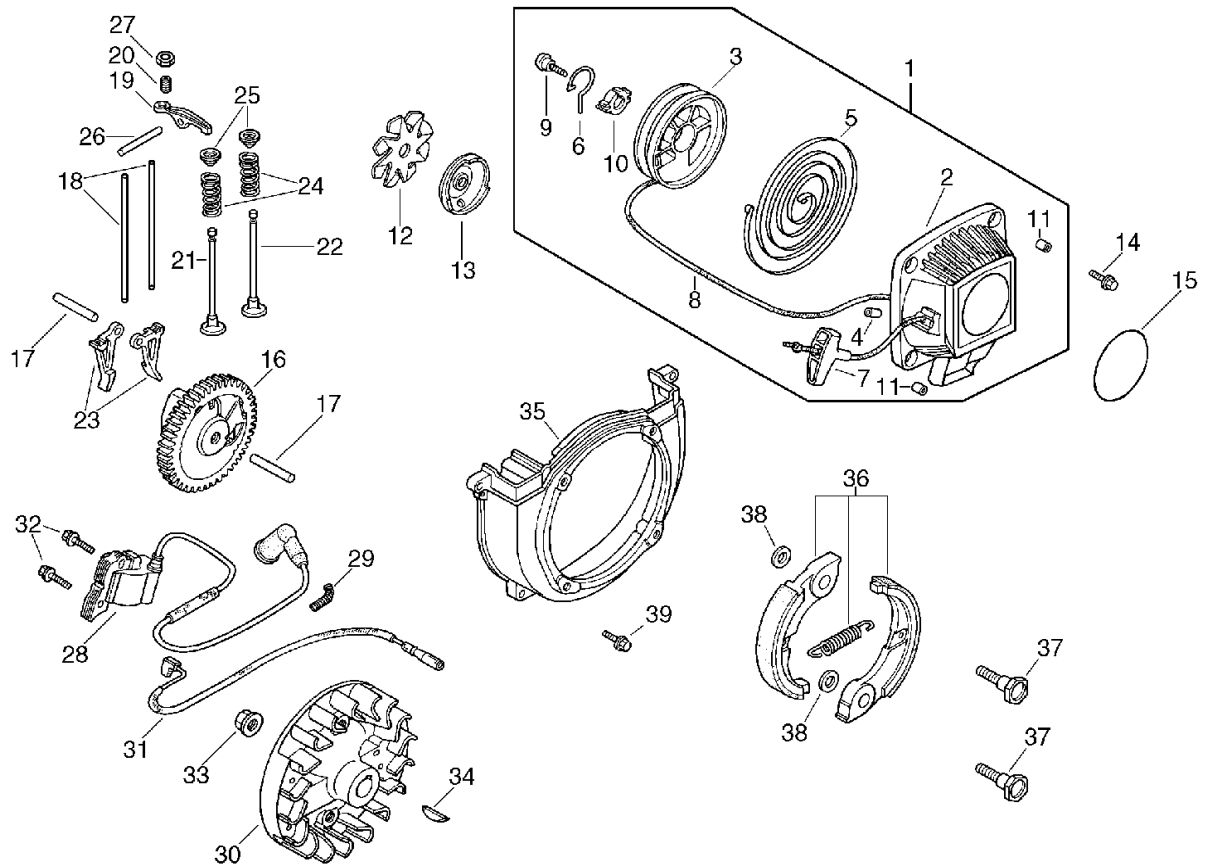
No.3



KEY	LV	PART NUMBER	Q'TY	DESCRIPTION	REMARKS	NOTE1	NOTE2
1		28400-ZM3-U31.	1	STARTER ASSY., RECOI			
2	+	28414-ZM3-U31.	1	CASE, RECOIL STARTER			
3	+	28421-ZM3-003	1	REEL, RECOIL STARTER			
4	+	28433-ZM3-003	1	GUIDE, ROPE			
5	+	28442-ZM3-003	1	SPRING, RECOIL START			
6	+	28459-ZM3-003	1	ARM, SWING			
7	+	28461-ZM3-003	1	KNOB, RECOIL STARTER			
8	+	28462-ZM3-003	1	ROPE, RECOIL STARTER			
9	+	90012-ZM3-003	1	SCREW SET			
10	+	91504-ZM3-003	1	COLLAR			
11	+	91505-ZM3-003	4	COLLAR			
12		28447-ZM3-000	1	FAN, RATCHET			
13		28451-ZM3-003	1	PULLEY, RECOIL START			
14		90005-ZM3-000	4	BOLT, FLANGE 5X18			
15		890118-49330	1	LABEL, ECHO			
16		14100-ZM3-000	1	CAMSHAFT ASSY.		Sus. by 14100- ZM3-010	
16		14100-ZM3-010	1	CAMSHAFT AASY			
17		14126-ZM3-000	2	ROLLER (5X23.8)			
18		14410-ZM3-000	2	ROD, PUSH			
19		14431-ZM3-000	2	ARM, VALVE ROCKER AR			
20		14451-ZM3-000	2	PIVOT, ROCKER ARM			
21		14711-ZM5-000	1	VALVE, IN			
22		14721-ZM3-000	1	VALVE, EX			
23		14731-ZM3-003	2	LIFTER, VALVE			
24		14751-ZM3-000	2	SPRING, VALVE			

### 3. Starter, Magneto, Clutch, Camshaft

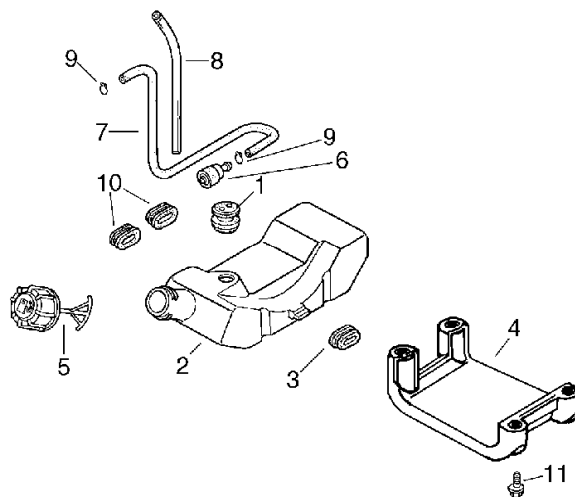
No.3



KEY	LV	PART NUMBER	Q'TY	DESCRIPTION	REMARKS	NOTE1	NOTE2
25		14771-ZM3-000	2	RETAINER, VALVE SPRI		Sus. by 14771-ZM3-010	
25		14771-ZM3-010	2	RETAINER, VALVE SPRI			
26		41313-PL3-000	1	ROLLER, 4X28			
27		90206-ZM3-000	2	NUT, TAPPET ADJUSTIN			
28		30500-ZM3-003	1	COIL ASSY., IGNITION			
29		30519-ZM3-000	1	TUBE A, CORRUGATED (			
30		31110-ZM5-013	1	FLYWHEEL COMP			
31		32195-ZM3-000	1	CORD, STOP SWITCH			
32		93401-05016-00	2	BOLT-WASHER, 5X16			
33		94050-10000	1	NUT, FLANG, 10MM			
34		94401-16120	1	KEY, WOODRUFF, 16X12			
35		19611-ZM5-000	1	COVER, FAN			
36		22000-ZM5-003	1	CLUTCH ASSY.			
37		22253-ZM5-003	2	BOLT, CLUTCH (8MM)			
38		22254-ZM5-003	2	WASHER, CLUTCH (8X17			
39		90005-ZM3-000	2	BOLT, FLANGE 5X18			

## 4. Fuel Tank

No.4

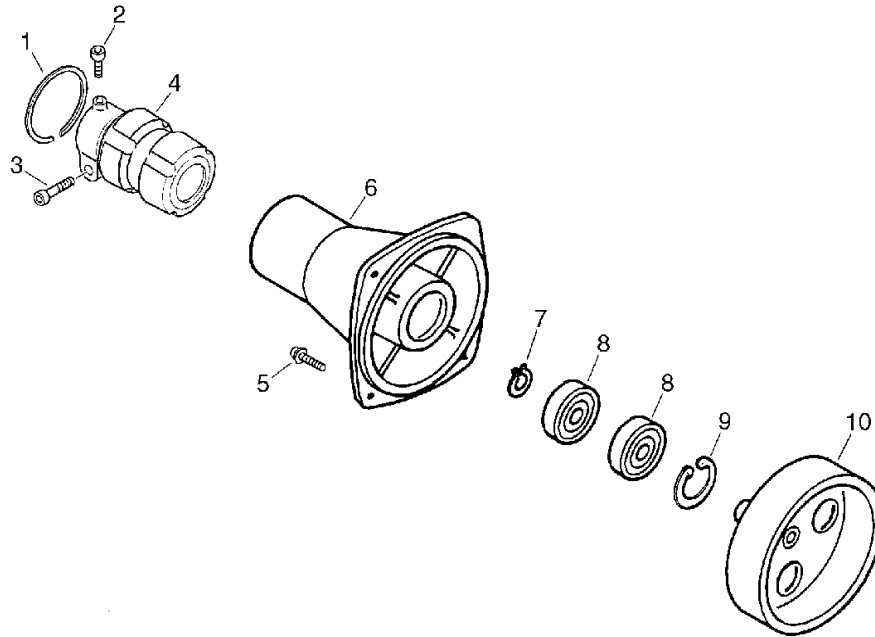


KEY	LV	PART NUMBER	Q'TY	DESCRIPTION	REMARKS	NOTE1	NOTE2
1		17504-ZM3-003	1	GROMMET, FUEL TUBE			
2		17511-ZM5-003	1	TANK, FUEL			
3		17532-ZM3-010	1	RUBBER A, TANK MOUNTI			
4		17555-ZM3-U30	1	GUARD COMP, TANK *NH1			
5		17620-ZM3-814	1	CAP ASSY, FUEL			
6		17672-ZM3-003	1	FILTER, FUEL			
7		17701-ZM3-003	1	TUBE, FUEL			
8		17702-ZM3-003	1	TUBE, FUEL RETURN			
9		91401-ZM3-003	2	CLIP, TUBE			
10		17533-ZM3-000	2	RUBBER B, TANK MOUNTI			
11		90012-ZM3-U30	4	BOLT, FLANGE 5X14			



## 5. Clutch Case

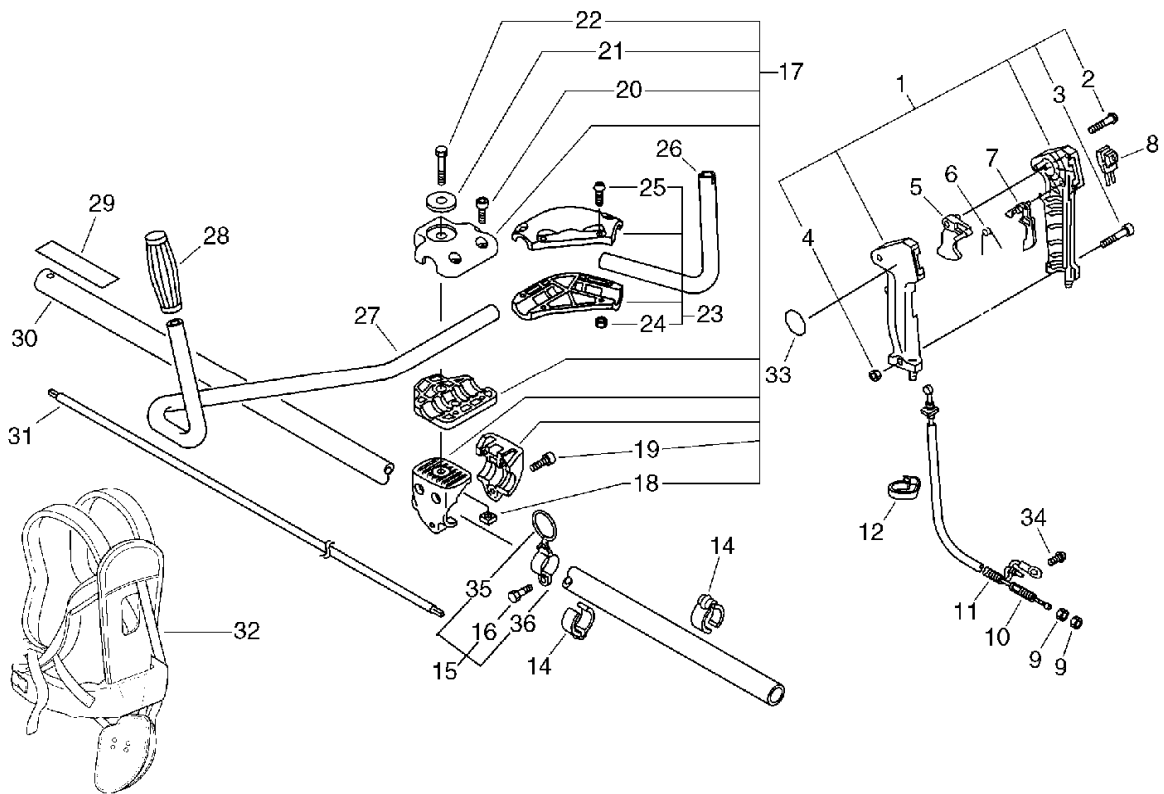
No.5



KEY	LV	PART NUMBER	Q'TY	DESCRIPTION	REMARKS	NOTE1	NOTE2
1		900702-00045	1	RING, RETAINING(IN)	CR-45		
2		900162-05012	1	BOLT, H.S. 5*12	5*12 W,SW		
3		900162-05028	1	BOLT, H.S. 5*28	5*28 W,SW		
4		610910-66630	1	CUSHION		Sus. by 610910-66632	
4		610910-66631	1	CUSHION		Sus. by 610910-66632	
4		610910-66632	1	CUSHION			
5		900162-06018	4	BOLT, H.S.H	6*18 W, SW		
6		610223-66630	1	CASE, CLUTCH DRUM			
7		900701-00012	1	CIRCLIP 12	CS-12		
8		900807-06001	2	BEARING, BALL 6001	6001V(LB)		
9		900702-00028	1	CIRCLIP 28	CR-28		
10		175005-66630	1	DRUM, CLUTCH			

## 6. U-Handle

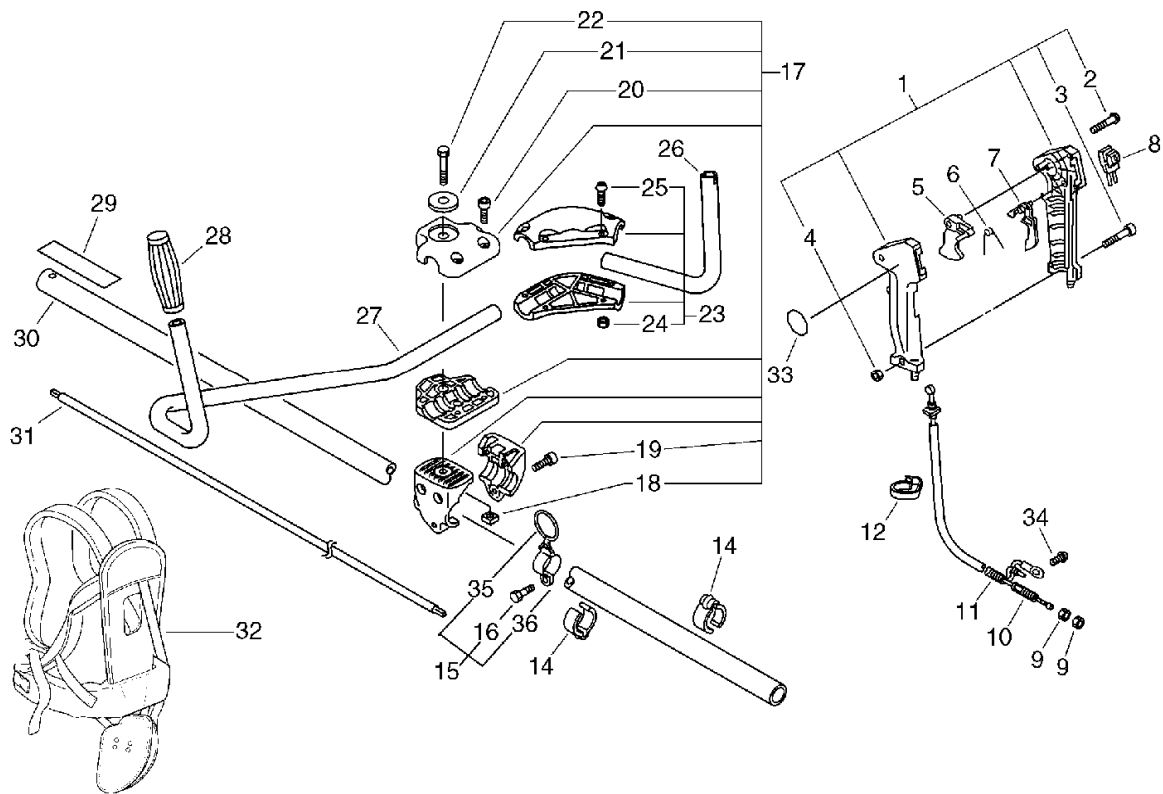
No.6



KEY	LV	PART NUMBER	Q'TY	DESCRIPTION	REMARKS	NOTE1	NOTE2
1		351102-47530	1	GRIP ASSY, F-HANDLE			
2	+	900246-03025	4	SCREW 3*25	3*25		
3	+	900220-05030	1	SCREW 5*30	5*30		
4	+	900500-00005	1	NUT 5	5		
5		178010-05960	1	CONTROL, THROTTLE			
6		178013-35631	1	SPRING, THR. LOCK			
7		178012-05960	1	LOCKOUT, THROTTLE			
8		163400-66730	1	SWITCH, ON OFF			
9		900502-00006	2	NUT 6 (3N)	3N6		
10		178001-66730	1	CABLE, THROTTLE	800L		
11		178127-47530	1	TUBE	7*10*760		
12		159112-09960	1	CLIP		Sus. by 159112-09961	
12		159112-09961	1	CLIP			
14		224924-52930	2	CLIP	28MM		
15		301200-05230	1	HOOK ASS'Y			
16	+	900105-05012	1	BOLT, H.S. 5*12	5*12		
35	+	301015-05330	1	HOOK, BAND			
36	+	301210-04630	1	HOOK			
17		351301-52930	1	BRACKET ASSY, HANDLE			
18	+	900565-50008	1	NUT	8*1.25		
19	+	900162-05030	3	BOLT, H.S. 5*30	5*30 W,SW		
20	+	900162-05020	2	BOLT, H.S. 5*20	5*20 W,SW		
21	+	605014-54230	1	WASHER			
22	+	351421-52130	1	BOLT			
23		351202-51430	1	BRACKET ASSY, HANDLE			

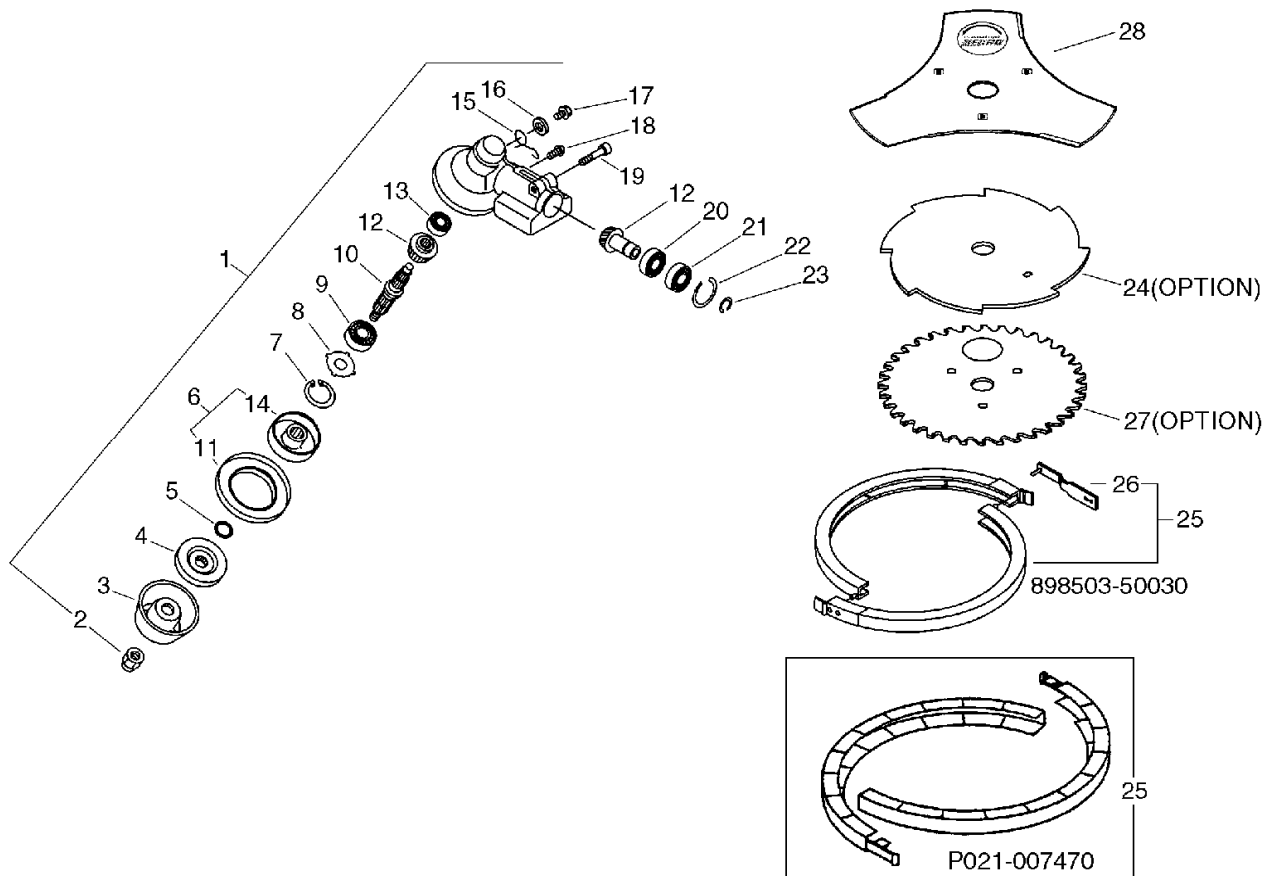
## 6. U-Handle

No.6



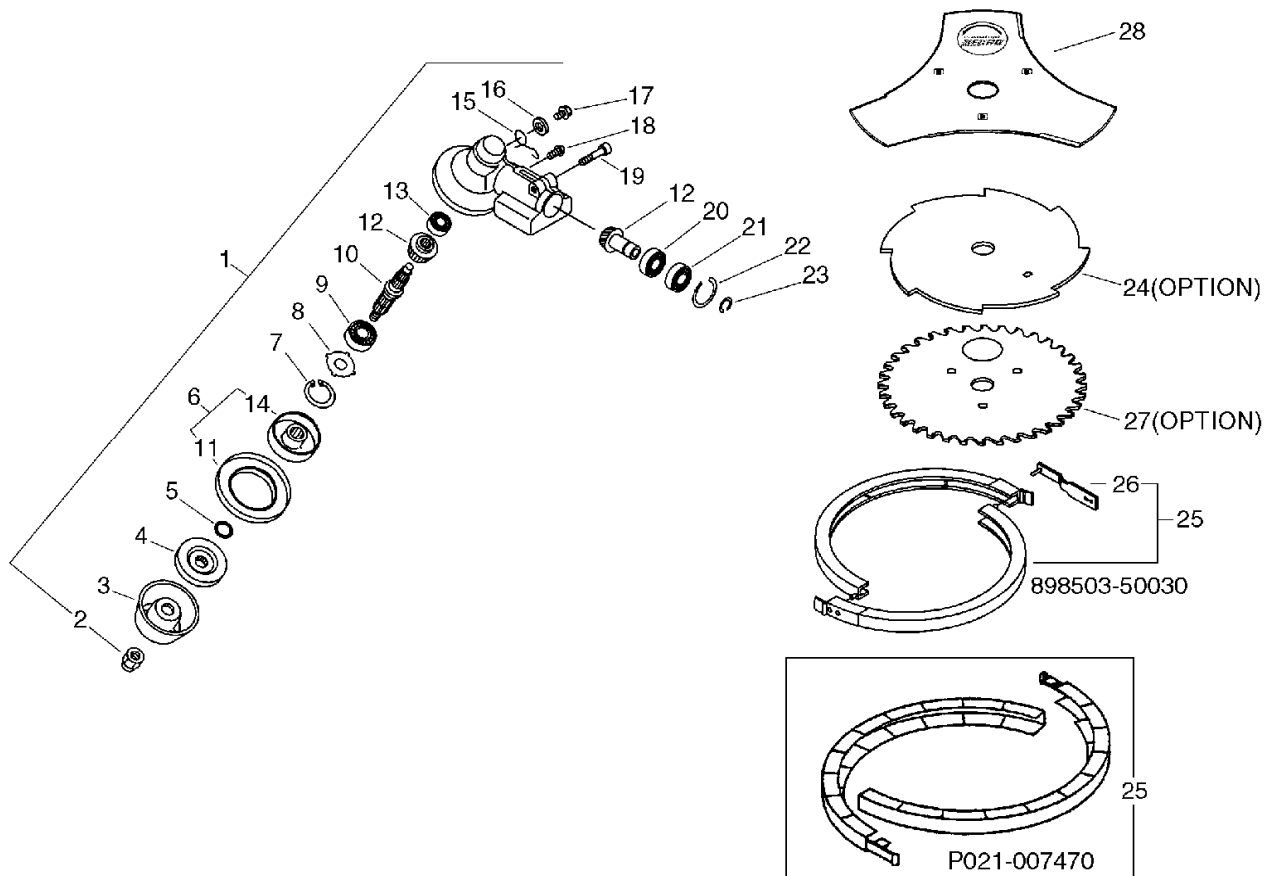
KEY	LV	PART NUMBER	Q'TY	DESCRIPTION	REMARKS	NOTE1	NOTE2
24	+	900500-00005	4	NUT 5	5		
25	+	900162-05020	4	BOLT, H.S. 5*20	5*20 W,SW		
26		351214-52931	1	HANDLE			
27		351010-52931	1	HANDLE, FRONT			
28		351311-22430	1	GRIP, HANDLE			
29		890617-43130	1	LABEL, CAUTION			
30		610206-56930	1	HOUSING ASSY, D.SHFT			
31		610011-06230	1	SHAFT, DRIVE			
32		301001-56831	1	HARNES ASY, SHOULDER		Sus. by C062-000181	
32		C062-000180	1	HARNES, SHOULDER	ECHO	Sus. by C062-000181	
32		C062-000181	1	HARNES, SHOULDER			
33		890157-39130	1	LABEL, SWITCH			
34		900242-05010	1	SCREW 5*10	5*10		

## 7. Gear Case(U-Handle Type), Blade No.7



KEY	LV	PART NUMBER	Q'TY	DESCRIPTION	REMARKS	NOTE1	NOTE2
1		610400-56931	1	CASE ASY, GEAR		Sus. by 610400-56932	
1		610400-56932	1	CASE ASY, GEAR			
2	+	610320-52130	1	NUT 10			
3	+	699229-56830	1	PLATE, COVER			
4	+	610314-52130	1	PLATE, ADAPTER (L)			
5	+	900720-00012	1	O-RING 12	P-12		
6	+	610313-52931	1	FIXTURE,BALDE		Sus. by C535-000001	
6	+	C535-000000	1	FIXTURE,BLADE		Sus. by C535-000001	
6	+	C535-000001	1	FIXTURE,BLADE			
11	++	610352-56830	1	PLATE, CUP			
14	++	610313-52131	1	FIXTURE, BLADE		Sus. by C535-000011	
14	++	C535-000010	1	FIXTURE,BLADE		Sus. by C535-000011	
14	++	C535-000011	1	FIXTURE,BLADE			
7	+	900702-00032	1	CIRCLIP 32	CR-32		
8	+	610444-56830	1	WASHER			
9	+	900812-06201	1	BEARING, BALL 6201	6201DDU(LLU)		
10	+	610310-56930	1	SHAFT, P.T.O.			
12	+	610300-56930	1	GEAR SET			
13	+	900810-00629	1	BEARING, BALL 629	629		
15	+	610473-52131	1	SPRING			
16	+	900603-50008	1	WASHER	8.5*18*0.8T		

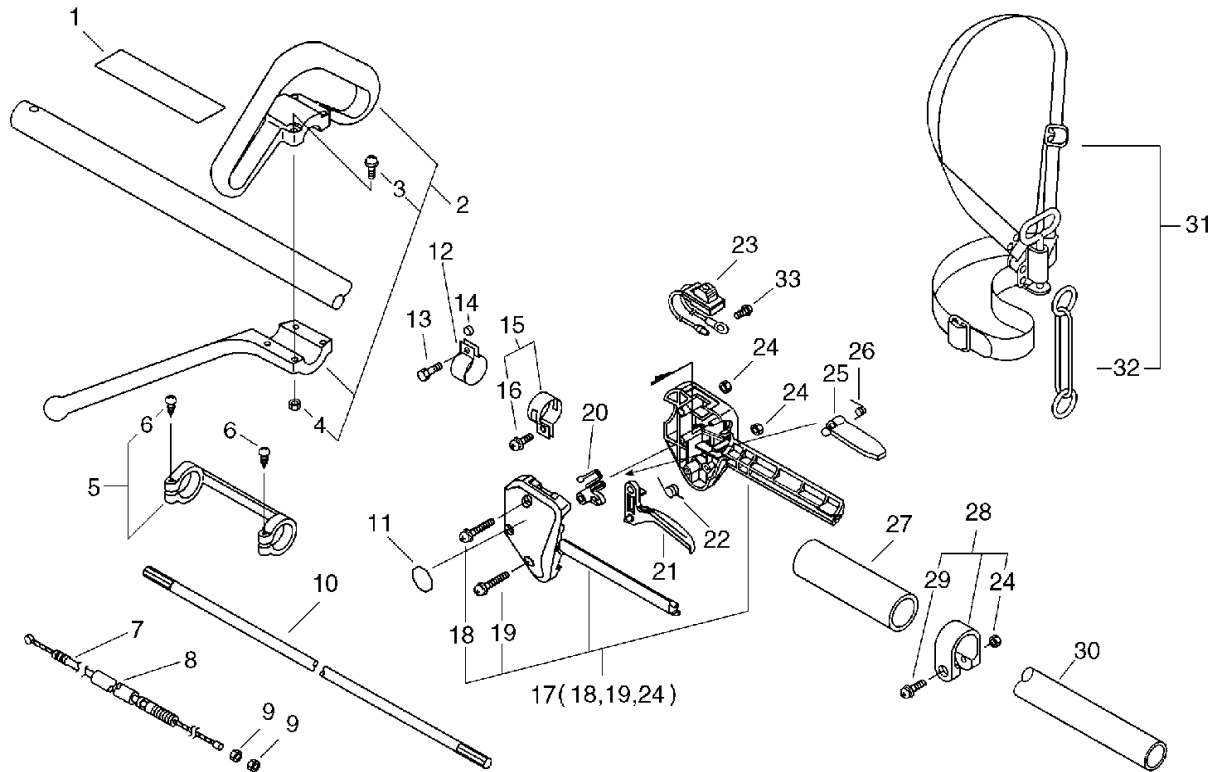
## 7. Gear Case(U-Handle Type), Blade No.7



KEY	LV	PART NUMBER	Q'TY	DESCRIPTION	REMARKS	NOTE1	NOTE2
17	+	610434-50030	1	BOLT 8*6		Sus. by 610434-50031	
17	+	610434-50031	1	BOLT 8*8	M8*8		
18	+	900242-05010	1	SCREW 5*10	5*10		
19	+	900162-06030	1	BOLT, H.S. 6*30	6*30W, SW		
20	+	900800-06001	1	BEARING, BALL 6001	6001		
21	+	900803-06001	1	BEARING, BALL 6001	6001Z		
22	+	900702-00028	1	CIRCLIP 28	CR-28		
23	+	900701-00012	1	CIRCLIP 12	CS-12		
25		898503-50030	1	SCABBARD KIT, BLADE		Sus. by P021-007470	
25		P021-007470	1	SCABBARD, BLADE			
26	+	898562-43230	1	FIXTURE, SCABBARD		Can be used on 898503-50030 only	
28		X405-000000	1	SAW, BUSH CUTTER	3*255*25.4*T2.0	Sus. by X405-000001	
28		X405-000001	1	SAW, BUSH CUTTER	3*255*25.4*T2.0		
24		696001-55631	1	BLADE, 8-CUTTER 10IN	255*8T*1.4 PD25	OPTION	
27		695001-55631	1	SAW, CIRCULAR 10*80T	255*80T*1.4 PD25	OPTION	

## 8. Loop Handle

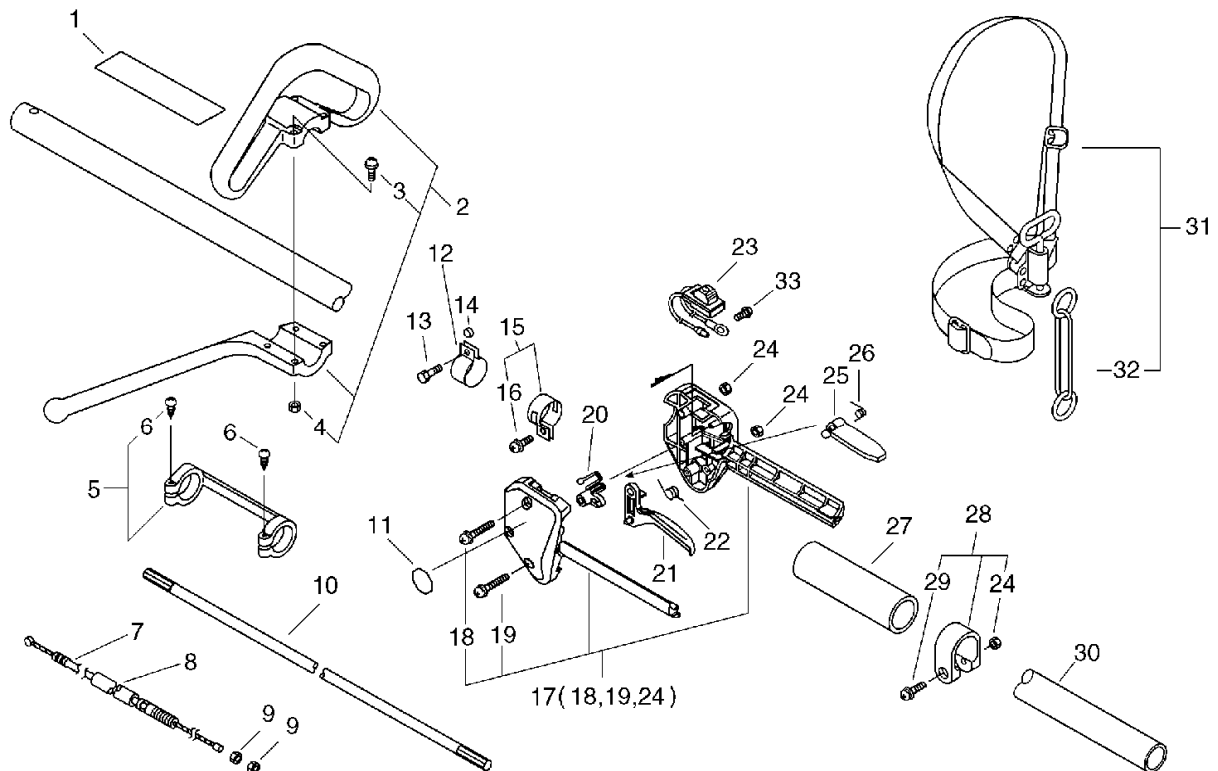
No.8



KEY	LV	PART NUMBER	Q'TY	DESCRIPTION	REMARKS	NOTE1	NOTE2
1		890617-63630	1	LABEL,CAUTION		Sus. by 890617-43130	
1		X505-000140	1	LABEL,CAUTION		Sus. by 890617-43130	
1		890617-43130	1	LABEL,CAUTION			
2		351201-55630	1	HANDLE ASSY, LOOP			
3	+	900242-05035	4	SCREW 5*35	5*35		
4	+	900500-00005	4	NUT 5	5		
5		610281-42230	1	COLLER			
6	+	900253-04025	2	SCREW 4*25	4*25		
7		178001-66630	1	CABLE, THROTTLE	400L		
8		162110-56530	1	TUBE	7*175		
9		900502-00006	2	NUT 6 (3N)	3N6		
10		610011-06230	1	SHAFT, DRIVE			
11		890157-39130	1	LABEL, SWITCH			
12		301207-07530	1	HOOK			
13		900100-05018	1	BOLT 5*18	5*18		
14		699012-03330	1	SPACER			
15		301200-42230	1	HOOK ASSY			
16	+	900242-05014	1	SCREW 5*14	5*14		
17		178003-51830	1	BRACKET SET, THROTTLE			
18	+	900242-05035	1	SCREW 5*35	5*35		
19	+	900242-05025	1	SCREW 5*25	5*25		
24	+	900500-00005	2	NUT 5	5		
20		178012-52630	1	LOCKOUT, THROTTLE			
21		178010-52130	1	CONTROL, THROTTLE			

## 8. Loop Handle

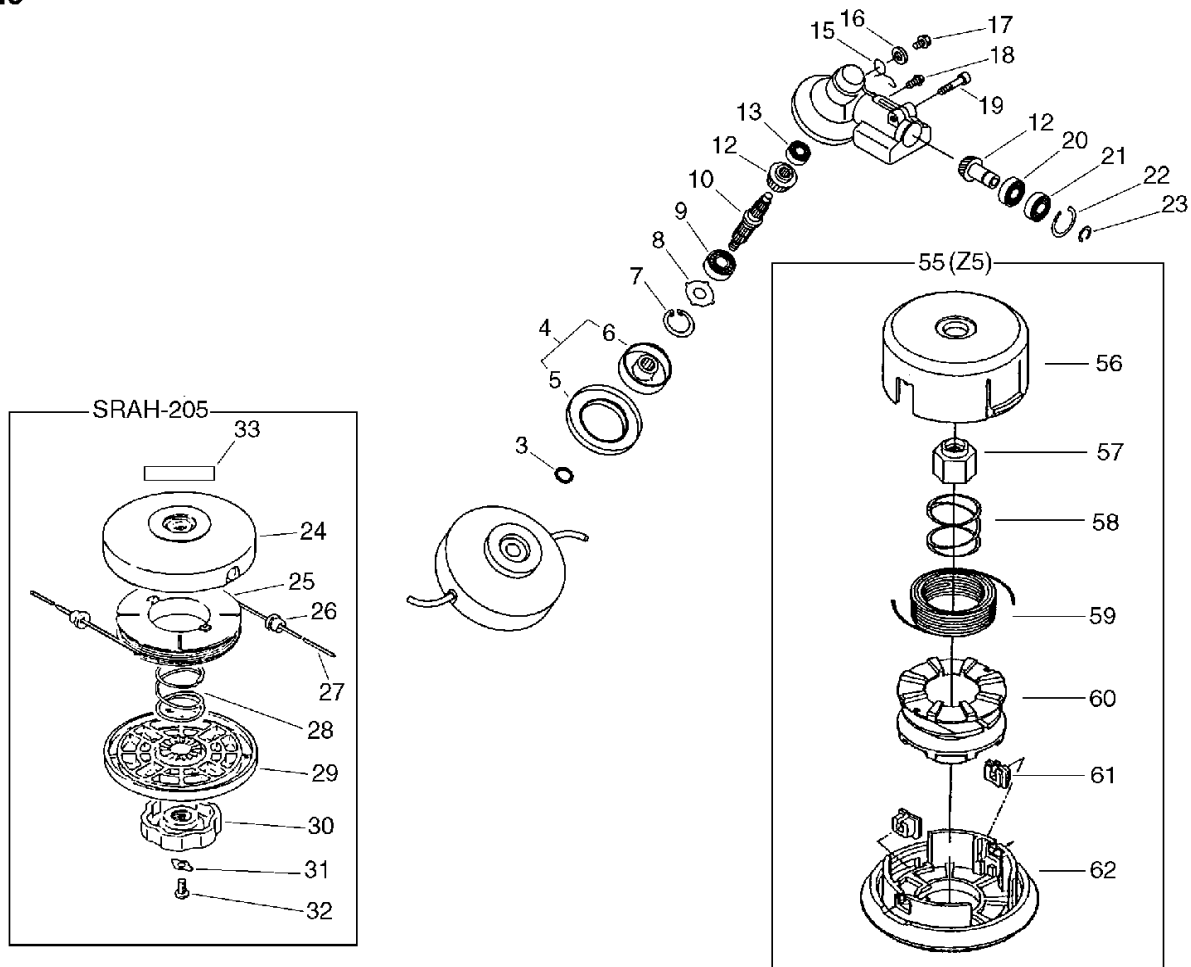
No.8



KEY	LV	PART NUMBER	Q'TY	DESCRIPTION	REMARKS	NOTE1	NOTE2
22		178043-42230	1	SPRING, THR. RETURN			
23		163400-66630	1	SWITCH, ON OFF			
25		178090-52630	1	LOCKOUT, T. CONTROL		Sus. by 178090-52632	
25		178090-52631	1	LOCKOUT, T. CONTROL		Sus. by 178090-52632	
25		178090-52632	1	LOCKOUT, T. CONTROL			
26		178013-52630	1	SPRING, THR. LOCK			
27		351213-51830	1	GRIP, FRONT HANDLE			
28		610272-51830	1	BAND			
24	+	900500-00005	1	NUT 5	5		
29	+	900242-05028	1	SCREW 5*28	5*28		
30		610206-56930	1	HOUSING ASSY, D.SHFT			
31		301000-55230	1	HARNESS ASSY		Sus. by 301000-55231	
31		301000-55231	1	HARNESS ASY, SHOULDER			
32	+	301305-24330	1	LINK			
33		900242-05010	1	SCREW 5*10	5*10		

# 9. Gear Case(Loop Handle Type), Nylon Line Cutting Head

No.9

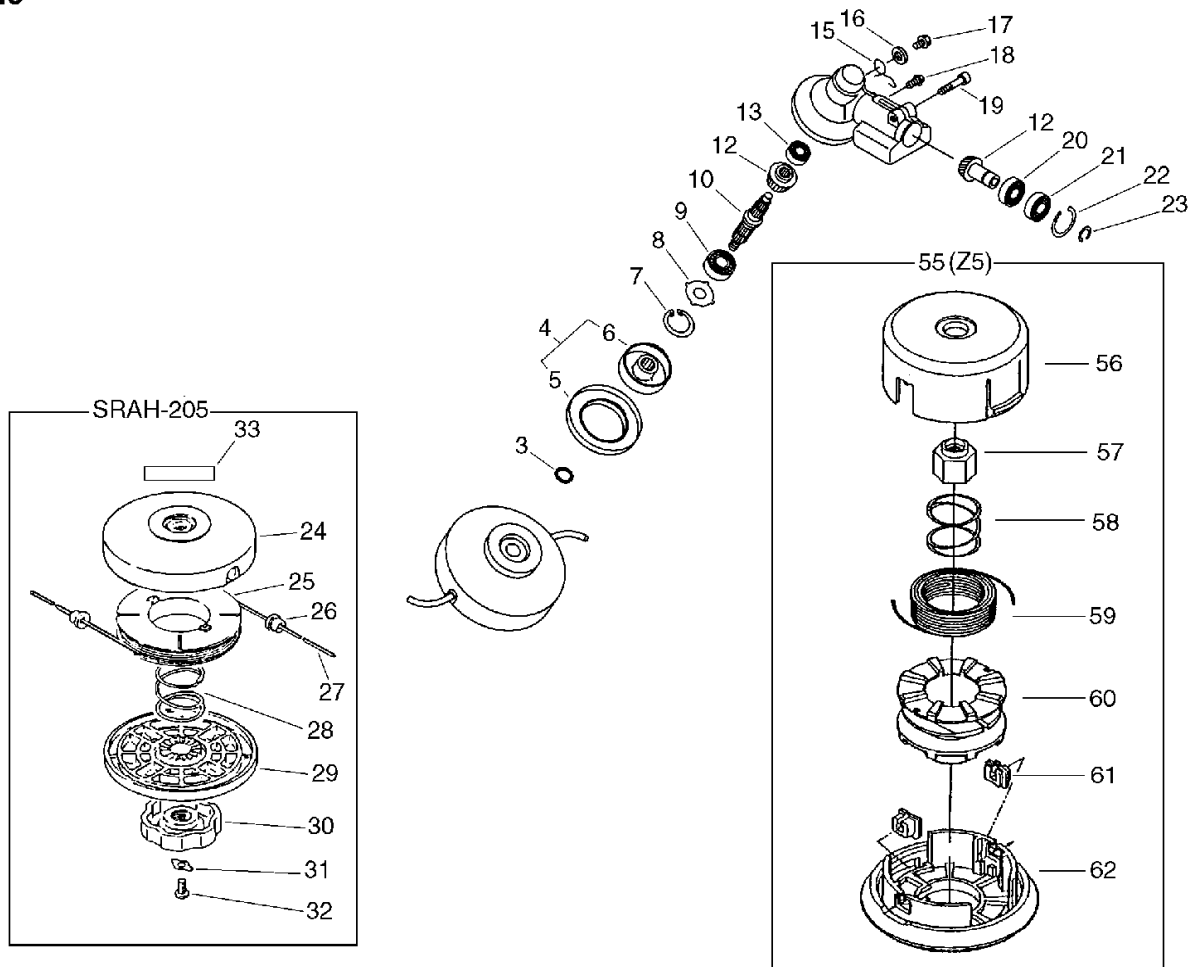


KEY	LV	PART NUMBER	Q'TY	DESCRIPTION	REMARKS	NOTE1	NOTE2
3		900720-00012	1	O-RING 12	P-12		
4		610313-52931	1	FIXTURE,BALDE		Sus. by C535-000001	
4		C535-000000	1	FIXTURE,BLADE		Sus. by C535-000001	
4		C535-000001	1	FIXTURE,BLADE			
5	+	610352-56830	1	PLATE, CUP			
6	+	610313-52131	1	FIXTURE, BLADE		Sus. by C535-000011	
6	+	C535-000010	1	FIXTURE,BLADE		Sus. by C535-000011	
6	+	C535-000011	1	FIXTURE,BLADE			
7		900702-00032	1	CIRCLIP 32	CR-32		
8		610444-56830	1	WASHER			
9		900812-06201	1	BEARING, BALL 6201	6201DDU(LLU)		
10		610310-56930	1	SHAFT, P.T.O.			
12		610300-56930	1	GEAR SET			
13		900810-00629	1	BEARING, BALL 629	629		
15		610473-52131	1	SPRING			
16		900603-50008	1	WASHER	8.5*18*0.8T		
17		610434-50030	1	BOLT 8*6			
18		900242-05010	1	SCREW 5*10	5*10		
19		900162-06030	1	BOLT, H.S. 6*30	6*30W, SW		
20		900800-06001	1	BEARING, BALL 6001	6001		
21		900803-06001	1	BEARING, BALL 6001	6001Z		
22		900702-00028	1	CIRCLIP 28	CR-28		



# 9. Gear Case(Loop Handle Type), Nylon Line Cutting Head

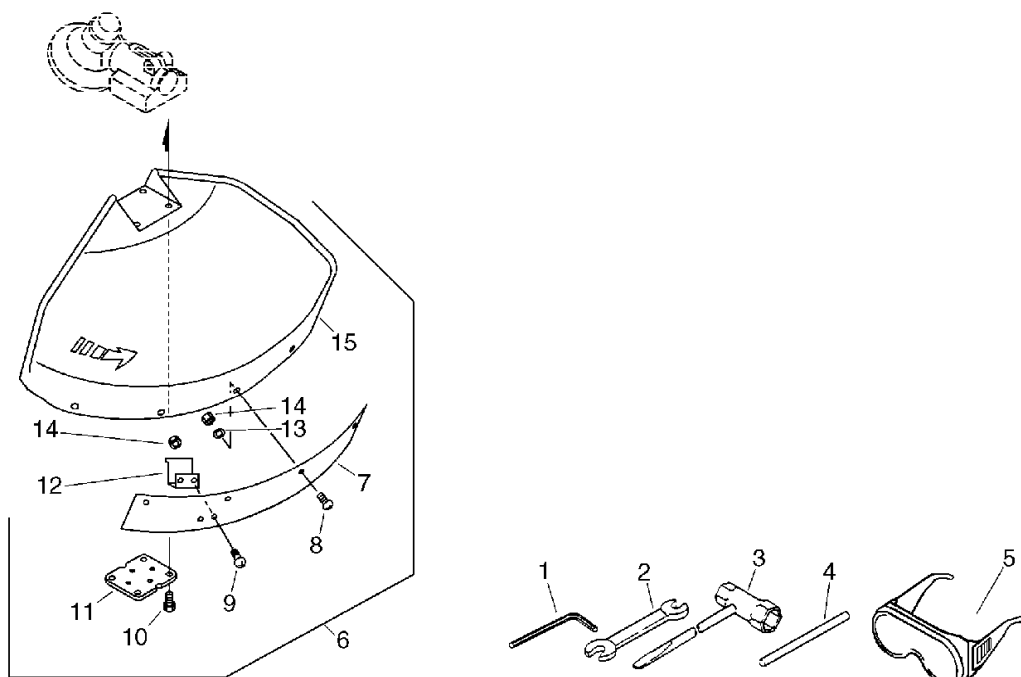
No.9



KEY	LV	PART NUMBER	Q'TY	DESCRIPTION	REMARKS	NOTE1	NOTE2
23		900701-00012	1	CIRCLIP 12	CS-12		
24		696210-56930	1	DRUM, REEL			
25		696214-06830	1	REEL, CORD			
26		696212-06032	2	EYELET			
27		696215-22830	2	CORD, NYLON(2.4*2.5)			
28		696216-06030	1	SPRING			
29		696206-28232	1	COVER, DRUM (BL)			
30		696219-28231	1	NUT (BL)			
31		696220-06030	1	STOPPER, NUT			
32		900220-06010	1	SCREW 6*10	6*10		
33		890617-46730	1	LABEL, CAUTION			
55		X047-000330	1	CUTTER,ASM LINE	Z-5 M10 L		
56	+	P022-010420	1	HOUSING			
57	+	P022-010390	1	NUT			
58	+	P022-010370	1	SPRING			
59	+	P022-010380	1	NYLON CODE			
60	+	P022-010400	1	BOBBIN			
61	+	P022-000710	2	EYELET	T4		
62	+	P022-010410	1	COVER			

## 10. Shield, Tools

No.10



KEY	LV	PART NUMBER	Q'TY	DESCRIPTION	REMARKS	NOTE1	NOTE2
1		895610-00130	1	L-WRENCH (4MM)			
2		895112-00330	1	SPANNER 8*10			
3		895415-66630	1	WRENCH, SPCKET			
4		897518-01131	1	LOCKING TOOL			
5		899580-40930	1	GOGGLE		Sus. by P021-002861	
5		899580-68730	1	SAFETY GLASSES			
5		P021-002861	1	GOGGLES			
6		699000-52931	1	SHIELD ASY			
7	+	699013-52130	1	PLATE, SHIELD			
8	+	900162-05018	4	BOLT, H.S. 5*18	5*18 W,SW		
9	+	900162-05014	2	BOLT, H.S. 5*14	5*14 W,SW		
10	+	900162-05025	4	BOLT, H.S. 5*25	5*25 W,SW		
11	+	699013-56830	1	PLATE, SHIELD			
12	+	699016-54530	1	KNIFE			
13	+	900603-00005	4	WASHER 5	5.5*12*0.8		
14	+	900500-00005	6	NUT 5	5		
15	+	699010-52931	1	SHIELD, BLADE			

## Index

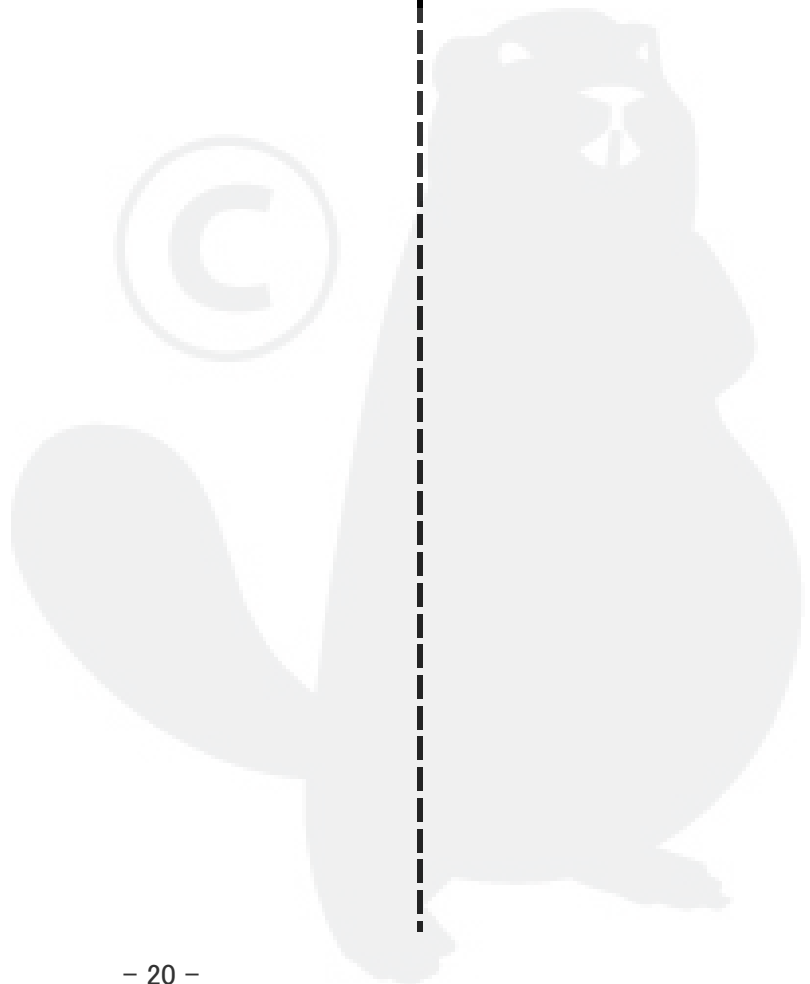
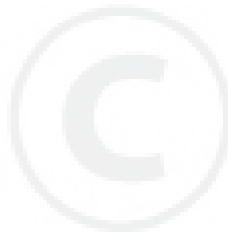
Patrs Number	Key No.	Patrs Number	Key No.	Patrs Number	Key No.
11010-ZM5-010	1 - 1	16028-ZM3-004	2 - 19	22253-ZM5-003	3 - 37
11113-ZM3-000	1 - 34	16029-ZM3-004	2 - 20	22254-ZM5-003	3 - 38
11114-ZM3-000	1 - 35	16030-ZM3-004	2 - 21	224924-52930	6 - 14
12310-ZM3-003	1 - 5	16031-ZM3-004	2 - 22	28400-ZM3-U31ZA	3 - 1
12312-ZM3-020	1 - 10	16032-ZM3-004	2 - 23	28414-ZM3-U31ZA	3 - 2
13010-ZM5-000	1 - 28	16033-ZM3-004	2 - 24	28421-ZM3-003	3 - 3
13101-ZM5-000	1 - 26	16100-ZM5-814	2 - 25	28433-ZM3-003	3 - 4
13101-ZM5-020	1 - 26	16100-ZM5-824	2 - 25	28442-ZM3-003	3 - 5
13111-ZM5-000	1 - 25	162110-56530	8 - 8	28447-ZM3-000	3 - 12
13310-ZM5-010	1 - 24	16211-ZM3-U30	2 - 26	28451-ZM3-003	3 - 13
13310-ZM5-020	1 - 24	16212-ZM3-000	2 - 27	28459-ZM3-003	3 - 6
13310-ZM5-030	1 - 24	16221-ZM3-000	2 - 28	28461-ZM3-003	3 - 7
14100-ZM3-000	3 - 16	163400-66630	8 - 23	28462-ZM3-003	3 - 8
14100-ZM3-010	3 - 16	163400-66730	6 - 8	301000-55230	8 - 31
14121-ZM5-010	1 - 11	17204-ZM3-000	2 - 44	301000-55231	8 - 31
14126-ZM3-000	3 - 17	17211-ZM3-000	2 - 47	301001-56831	6 - 32
14410-ZM3-000	3 - 18	17220-ZM3-000ZB	2 - 43	301015-05330	6 - 35
14431-ZM3-000	3 - 19	17231-ZM3-000ZB	2 - 48	301200-05230	6 - 15
14451-ZM3-000	3 - 20	175005-66630	5 - 10	301200-42230	8 - 15
14711-ZM5-000	3 - 21	17504-ZM3-003	4 - 1	301207-07530	8 - 12
14721-ZM3-000	3 - 22	17511-ZM5-003	4 - 2	301210-04630	6 - 36
14731-ZM3-003	3 - 23	17532-ZM3-010	4 - 3	301305-24330	8 - 32
14751-ZM3-000	3 - 24	17533-ZM3-000	4 - 10	30500-ZM3-003	3 - 28
14771-ZM3-000	3 - 25	17555-ZM3-U30ZA	4 - 4	30519-ZM3-000	3 - 29
14771-ZM3-010	3 - 25	17620-ZM3-814	4 - 5	31110-ZM5-013	3 - 30
15511-ZM3-000	1 - 2	17672-ZM3-003	4 - 6	32195-ZM3-000	3 - 31
15571-ZM3-003	1 - 6	17701-ZM3-003	4 - 7	351010-52931	6 - 27
15572-ZM3-000	1 - 7	17702-ZM3-003	4 - 8	351102-47530	6 - 1
15620-ZM3-003	1 - 8	178001-66630	8 - 7	351201-55630	8 - 2
15625-ZE1-003	1 - 9	178001-66730	6 - 10	351202-51430	6 - 23
159112-09960	6 - 12	178003-51830	8 - 17	351213-51830	8 - 27
159112-09961	6 - 12	178010-05960	6 - 5	351214-52931	6 - 26
16010-ZM3-004	2 - 1	178010-52130	8 - 21	351301-52930	6 - 17
16011-ZM3-014	2 - 2	178012-05960	6 - 7	351311-22430	6 - 28
16012-ZM5-004	2 - 3	178012-52630	8 - 20	351421-52130	6 - 22
16013-ZM3-004	2 - 4	178013-35631	6 - 6	41313-PL3-000	3 - 26
16014-ZM3-004	2 - 5	178013-52630	8 - 26	605014-54230	6 - 21
16015-ZM3-004	2 - 8	178043-42230	8 - 22	610011-06230	6 - 31
16017-ZM3-004	2 - 6	178090-52630	8 - 25	610011-06230	8 - 10
16018-ZM3-004	2 - 9	178090-52631	8 - 25	610206-56930	6 - 30
16019-ZM3-004	2 - 10	178090-52632	8 - 25	610206-56930	8 - 30
16020-ZM3-004	2 - 11	178127-47530	6 - 11	610223-66630	5 - 6
16021-ZM3-004	2 - 12	18310-ZM3-000	2 - 37	610272-51830	8 - 28
16022-ZM3-004	2 - 13	18515-ZM3-810	2 - 36	610281-42230	8 - 5
16023-ZM3-004	2 - 14	19611-ZM5-000	3 - 35	610300-56930	7 - 12
16024-ZM3-004	2 - 15	19651-ZM3-U30	2 - 29	610300-56930	9 - 12
16025-ZM3-004	2 - 16	19720-ZM3-U30ZA	1 - 30	610310-56930	7 - 10
16026-ZM3-004	2 - 17	19722-ZM3-000	2 - 38	610310-56930	9 - 10
16027-ZM3-004	2 - 18	22000-ZM5-003	3 - 36	610313-52131	7 - 14

**Index**

<b>Patrs Number</b>	<b>Key No.</b>	<b>Patrs Number</b>	<b>Key No.</b>	<b>Patrs Number</b>	<b>Key No.</b>
610313-52131	9 - 6	898503-50030	7 - 25	900565-50008	6 - 18
610313-52931	7 - 6	898562-43230	7 - 26	900603-00005	10 - 13
610313-52931	9 - 4	899580-40930	10 - 5	900603-50008	7 - 16
610314-52130	7 - 4	899580-68730	10 - 5	900603-50008	9 - 16
610320-52130	7 - 2	90001-ZM3-000	1 - 14	900701-00012	5 - 7
610352-56830	7 - 11	90002-ZM3-000	1 - 13	900701-00012	7 - 23
610352-56830	9 - 5	90003-ZM3-000	1 - 3	900701-00012	9 - 23
610400-56931	7 - 1	90004-ZM3-000	2 - 39	900702-00028	5 - 9
610400-56932	7 - 1	90005-ZM3-000	1 - 4	900702-00028	7 - 22
610434-50030	7 - 17	90005-ZM3-000	3 - 14	900702-00028	9 - 22
610434-50030	9 - 17	90005-ZM3-000	3 - 39	900702-00032	7 - 7
610434-50031	7 - 17	900100-05018	8 - 13	900702-00032	9 - 7
610444-56830	7 - 8	900105-05012	6 - 16	900702-00045	5 - 1
610444-56830	9 - 8	90010-ZM3-000	2 - 31	900720-00012	7 - 5
610473-52131	7 - 15	90011-ZM3-000	1 - 12	900720-00012	9 - 3
610473-52131	9 - 15	90012-ZM3-003	3 - 9	900800-06001	7 - 20
610910-66630	5 - 4	90012-ZM3-U30	4 - 11	900800-06001	9 - 20
610910-66631	5 - 4	900162-05012	5 - 2	900803-06001	7 - 21
610910-66632	5 - 4	900162-05014	10 - 9	900803-06001	9 - 21
695001-55631	7 - 27	900162-05018	10 - 8	900807-06001	5 - 8
696001-55631	7 - 24	900162-05020	6 - 20	900810-00629	7 - 13
696206-28232	9 - 29	900162-05020	6 - 25	900810-00629	9 - 13
696210-56930	9 - 24	900162-05025	10 - 10	900812-06201	7 - 9
696212-06032	9 - 26	900162-05028	5 - 3	900812-06201	9 - 9
696214-06830	9 - 25	900162-05030	6 - 19	90112-GK8-010	1 - 31
696215-22830	9 - 27	900162-06018	5 - 5	90112-ZM3-U30	2 - 32
696216-06030	9 - 28	900162-06030	7 - 19	90206-ZM3-000	3 - 27
696219-28231	9 - 30	900162-06030	9 - 19	90481-GW3-000	1 - 15
696220-06030	9 - 31	900220-05030	6 - 3	90659-680-013	2 - 33
699000-52931	10 - 6	900220-06010	9 - 32	91213-ZM3-003	1 - 27
699010-52931	10 - 15	900242-05010	6 - 34	91214-ZM3-003	1 - 29
699012-03330	8 - 14	900242-05010	7 - 18	91301-ZM3-000	2 - 34
699013-52130	10 - 7	900242-05010	8 - 33	91401-ZM3-003	4 - 9
699013-56830	10 - 11	900242-05010	9 - 18	91501-ZM3-000	1 - 16
699016-54530	10 - 12	900242-05014	8 - 16	91501-ZM3-010	1 - 16
699229-56830	7 - 3	900242-05025	8 - 19	91502-ZM3-000	1 - 32
890115-66630	1 - 33	900242-05028	8 - 29	91503-ZM3-000	2 - 45
890115-66631	1 - 33	900242-05035	8 - 3	91504-ZM3-003	3 - 10
890118-49330	3 - 15	900242-05035	8 - 18	91505-ZM3-003	3 - 11
890157-39130	6 - 33	900246-03025	6 - 2	91506-ZM3-000	1 - 17
890157-39130	8 - 11	900253-04025	8 - 6	93401-04010-00	1 - 36
890617-43130	6 - 29	900500-00005	10 - 14	93401-04016-00	1 - 18
890617-43130	8 - 1	900500-00005	6 - 4	93401-05016-00	3 - 32
890617-46730	9 - 33	900500-00005	6 - 24	93500-03005-0A	1 - 19
890617-63630	8 - 1	900500-00005	8 - 4	93891-05008-00	2 - 40
895112-00330	10 - 2	900500-00005	8 - 24	93894-05010-00	2 - 30
895415-66630	10 - 3	900500-00005	8 - 24	93894-05010-00	2 - 41
895610-00130	10 - 1	900502-00006	6 - 9	93894-05016-00	2 - 42
897518-01131	10 - 4	900502-00006	8 - 9	94050-05000	2 - 46

# Index

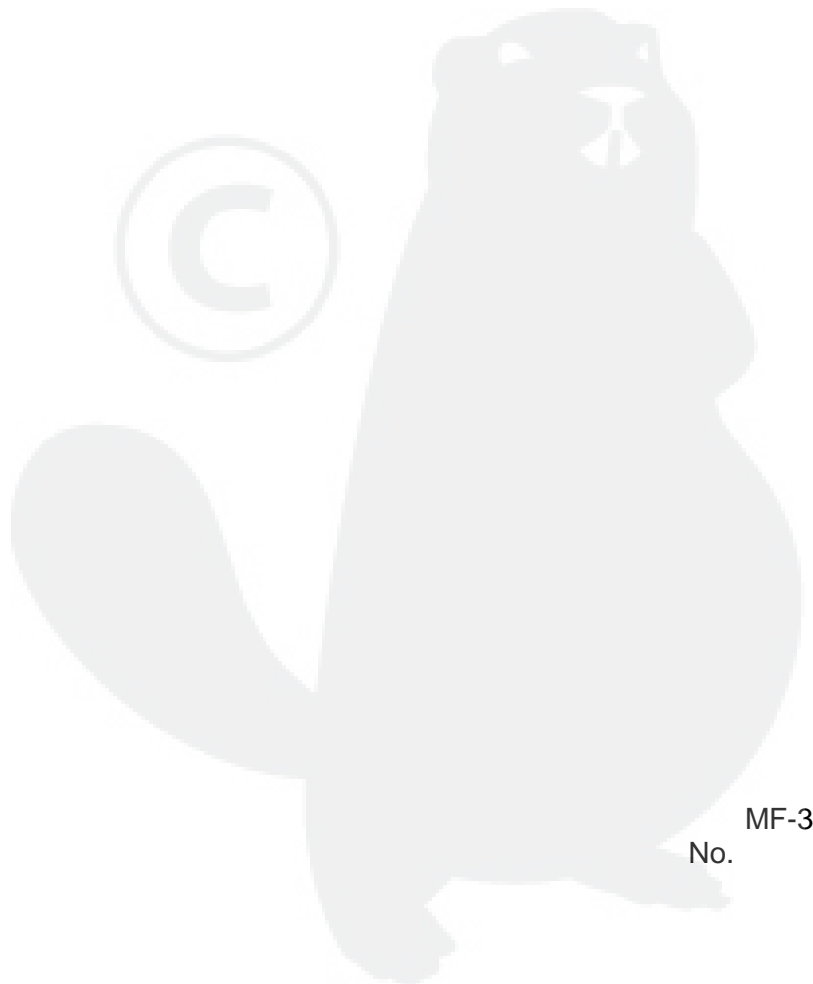
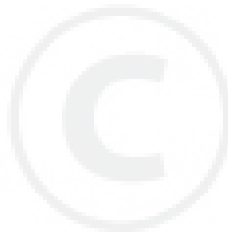
Patrs Number	Key No.	Patrs Number	Key No.	Patrs Number	Key No.
94050-10000	3 - 33				
94401-16120	3 - 34				
95005-70068-30	1 - 20				
98056-55777	1 - 21				
99101-ZM3-0420	2 - 35				
C062-000180	6 - 32				
C062-000181	6 - 32				
C535-000000	7 - 6				
C535-000000	9 - 4				
C535-000001	7 - 6				
C535-000001	9 - 4				
C535-000010	7 - 14				
C535-000010	9 - 6				
C535-000011	7 - 14				
C535-000011	9 - 6				
P021-002861	10 - 5				
P021-007470	7 - 25				
P022-000710	9 - 61				
P022-010370	9 - 58				
P022-010380	9 - 59				
P022-010390	9 - 57				
P022-010400	9 - 60				
P022-010410	9 - 62				
P022-010420	9 - 56				
X047-000330	9 - 55				
X405-000000	7 - 28				
X405-000001	7 - 28				
X505-000140	8 - 1				



# YAMABIKO CORPORATION

7-2 SUEHIROCHO 1-CHOME, OHME, TOKYO 198-8760, JAPAN  
PHONE: 81-428-32-6118. FAX: 81-428-32-6145.

**ECHO**<sup>®</sup>



MF-3  
No.