



**BRUSH CUTTER  
PARTS CATALOG  
SRM-200AE**

**ECHO, INCORPORATED  
400 OAKWOOD ROAD  
LAKE ZURICH, IL 60047**

**898 56120333  
01/83**

Key No.	Part No.	Q'ty	Description	Key No.	Part No.	Q'ty	Description
2- 1	<b>301 000-0753 0</b>	<b>1</b>	<b>Shoulder strap</b>	2- 20	-900 500-0000 5	2	Nut 5
2	-301 305-0753 0	1	Strap	27	-900 600-0000 5	3	Washer 5
6	610 011-0893 0	1	Shaft, drive	32	-610 337-0893 0	1	Circlip
7	<b>610 206-0893 0</b>	<b>1</b>	<b>Housing ass'y</b>	33	-900 702-0002 5	1	Circlip 25
8	-610 105-0893 0	5	Bush	34	-900 803-0060 9	1	Ball bearing 609
9	890 152-0493 0	1	Decal	35	-900 800-0060 9	2	Ball bearing 609
10	351 012-0893 0	1	Grip	36	-610 239-0413 0	2	Spacer
11	900 502-0000 6	2	Nut 6	39	-900 100-0800 8	1	Bolt 8x8
12	900 600-0000 6	2	Washer 6	40	-900 220-0501 0	1	Screw 5x10
13	178 001-0893 0	1	Throttle cable	41	-900 100-0503 5	2	Bolt 5x35
				42	-900 605-0000 5	3	Spring washer
14	178 048-0563 0	1	Spacer	65	-610 301-0893 0	1	Gear set
15	178 043-0693 0	1	Spring, return	66	-610 460-0893 0	1	Gear housing
16	178 010-0563 0	1	Throttle trigger	67	-610 335-0713 0	1	Circlip
17	178 024-0893 0	1	Bracket, trigger	68	-610 360-0893 1	1	Shaft, P.T.O.
18	178 110-0533 0	1	Screw	69	-900 810-0620 1	1	Ball bearing 6201
19	<b>900 242-0503 0</b>	<b>1</b>	<b>Screw 5x30</b>	70	-900 702-0003 2	1	Circlip 32
20	900 500-0000 5	1	Nut 5	71	-610 315-0713 0	1	Spacer
21	433 020-0083 0	1	Lock nut 5	72	-610 413-0713 0	1	Oil seal
22	301 207-0893 0	1	Hock	73	-610 338-0893 0	1	Plate, blade fixing
23	900 100-0501 8	1	Bolt 5x18	74	-610 314-0413 1	1	Plate, blade fixing
24	699 012-0333 0	1	Spacer	75	-900 511-0001 0	1	Nut 10 L-h
<b>25, 26</b>	<b>351 201-0893 0</b>	<b>1</b>	<b>Handle set</b>	76	-900 300-2002 2	1	Split pin 2x22
20	-900 500-0000 5	2	Nut 5	60	895 112-0033 0	1	Spanner 8x10
27	-900 600-0000 5	2	Washer 5	61	895 410-0793 0	1	Wrench 17x19
28	-900 220-0504 0	2	Screw 5x40	62	897 518-0113 1	1	Locking tool
29	890 160-2033 0	1	Decal, caution	63	898 502-0113 0	1	10 pcs. split pin
*	<b>699 000-2023 0</b>	<b>1</b>	<b>Shield ass'y</b>				
27	-900 600-0000 5	8	Washer 5				
42	-900 605-0000 5	4	Spring washer 5				
50	-900 220-0501 4	4	Screw 5x14				
51	-433 022-0283 0	4	Lock nut 5				
52	-699 006-2023 0	1	Bracket w/seat				
54	-699 015-2023 0	1	Bracket, shield				
55	-699 010-2023 0	1	Shield				
**	<b>610 402-0893 2</b>	<b>1</b>	<b>Gear housing ass'y</b>				

Remarks:

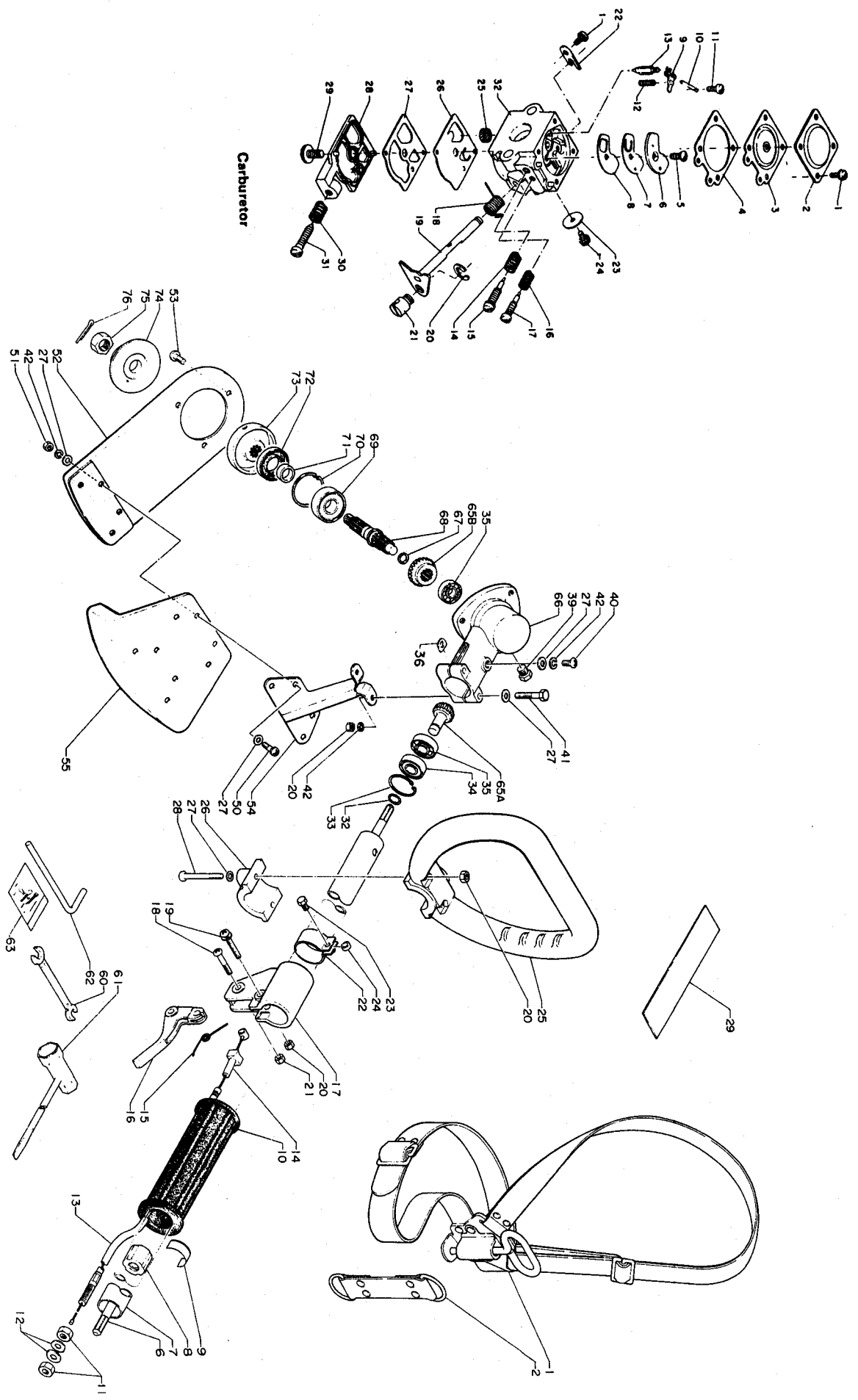
- 1: Includes 2.
- 7: Includes 8.
- 25, 26: Consists of 20, 27 and 28.
- \*: Consists of 27, 42, 50 thru 52, 54 and 55.
- \*\* : Consists of 20, 27, 32 thru 36, 39 thru 42 and 67 thru 76.

Key No.	Part No.	Q'ty	Description	Key No.	Part No.	Q'ty	Description
3- *	<b>123 000-0652 0</b>	<b>1</b>	<b>Carburetor ass'y (WA-81)</b>	20	-123 127-1063 0	1	Clip
1	-123 144-0393 0	5	Screw	21	-123 172-0432 0	1	Swivel
2	-123 142-0393 0	1	Cover, metering diaphragm	22	-123 127-0393 0	1	Clip, throttle shaft
3	-123 141-0393 0	1	Diaphragm, metering	23	-123 116-0523 0	1	Valve, throttle
4	-123 140-0393 0	1	Gasket, m./diaphragm	24	-123 114-0393 0	1	Screw, throttle valve
5	-123 167-0523 0	1	Screw, circuit plate	25	-123 126-0393 0	1	Screen, inlet
6	-123 166-0393 0	1	Plate, circuit	26	-123 112-0393 0	1	Diaphragm, fuel pump
7	-123 165-0393 0	1	Diaphragm, circuit plate	27	-123 125-0393 0	1	Gasket, fuel pump
8	-123 164-0393 0	1	Gasket, circuit plate	28	-123 124-1113 0	1	Cover, fuel pump
9	-123 123-0393 0	1	Lever, metering	29	-123 110-0393 0	1	Screw, pump cover
10	-123 138-0393 0	1	Pin, metering lever	30	-123 133-1113 0	1	Spring, idle screw
11	-123 139-0393 0	1	Screw, metering lever pin	31	-123 134-0653 0	1	Screw, idle adjustment
12	-123 122-0393 0	1	Spring, metering lever	32	-Not Available	1	Body ass'y
13	-123 137-0393 0	1	Valve, inlet needle				
14	-123 119-0393 0	1	Spring, H.S. needle				
15	-123 120-0653 0	1	Needle, high speed				
16	-123 121-0393 0	1	Spring, idle needle				
17	-123 118-0652 0	1	Needle idle				
18	-123 113-0393 0	1	Spring, throttle return				
19	-123 117-0502 0	1	Shaft, throttle				

Remarks:

- 2-\*: Consists of 1 thru 32.

Carburetor



Key No.	Part No.	Q'ty	Description	Key No.	Part No.	Q'ty	Description
1- 1	100 100-0742 0	1	Crankshaft	1- 55	131 918-0732 0	1	Bracket, fuel tank
3	100 242-0492 0	1	Gasket, crankcase	***	<b>131 004-0632 0</b>	1	<b>Cap ass'y, fuel tank</b>
5	<b>100 200-0742 0</b>	1	<b>Crankcase Set</b>	56	-131 315-0502 0	1	Filter, check valve
4	-100 215-0393 0	4	Knock pin	57	-131 314-0632 0	1	Check valve
7	900 242-0503 0	4	Screw 5x30 w/W, SW	58	-131 017-0743 0	1	Cap, fuel tank
8	156 114-0231 0	1	Grommet	59	-131 016-0492 0	1	Gasket, fuel tank cap
9	100 113-0593 0	1	Needle bearing	60	131 010-0732 0	1	Fuel tank
10	100 014-0652 0	2	Spacer, piston pin	61	130 010-2163 0	1	Gasket
11	131 920-0732 0	1	Cushion	62	130 017-0652 0	1	Insulator
12	131 910-0742 0	1	Bracket, fuel tank	63	130 016-0492 1	1	Gasket
13	900 242-0401 4	4	Screw 4x14 w/W, SW	64	123 000-0652 0	1	Carburetor ass'y (WA-81)
14	900 810-3620 1	2	Ball bearing 6201	65	132 115-0492 0	1	Grommet
15	100 213-0553 0	2	Oil seal	66	132 010-0492 0	1	Fuel pipe
16	100 142-0031 0	1	Woodruff key	67	131 205-0732 0	1	Fuel strainer
17	100 015-0463 0	2	Circlip, piston pin	68	131 924-0732 0	1	Cushion
18	100 013-1021 0	1	Piston pin	73	<b>130 301-0492 0</b>	1	<b>Case, air cleaner</b>
19	100 010-0652 0	1	Piston	74	-178 810-0492 0	1	Grommet
20	100 011-0533 0	1	Piston ring	75	178 516-0083 0	1	Washer
21	101 010-0492 0	1	Gasket, cylinder base	76	178 515-0492 0	1	Choke shutter
22	101 011-0652 0	1	Cylinder	77	900 242-0505 7	2	Screw 5x57 w/W, SW
23	900 242-0602 0	2	Screw 6x20 w/W, SW	78	130 310-0492 2	1	Air filter
24	101 514-0652 0	1	Cylinder cover	79	900 242-0401 2	2	Screw 4x12
25	900 242-0501 0	1	Screw 5x10 w/W, SW	80	159 110-0742 0	1	Cord holder
26	100 616-0632 0	1	Dust filter	81	156 626-0742 0	1	Ignition coil
27	900 245-0401 4	2	Tapping screw 4x14	82	156 800-0742 0	1	Flywheel
28	101 014-0056 0	2	Stud	83	156 601-0742 1	1	C.D. ignition module
*	<b>145 803-0652 0</b>	1	<b>Muffler ass'y (S.A.M.)</b>	84	159 012-0162 0	1	Cap, spark plug
29	-145 510-0652 0	1	Gasket, muffler	85	159 011-0051 0	1	Coil spring, plug cap
30	-145 806-0652 0	1	Muffler body	86	159 026-0393 0	1	Spark plug
33	-145 862-0652 0	1	Screen	88	175 019-0492 0	1	Side plate
34	-145 809-0652 0	1	Lid, muffler	89	175 009-0513 0	2	Clutch shoe
35	-900 242-0401 0	4	Screw 4x10 w/W, SW	90	175 018-0513 0	2	Clutch spring
36	-145 621-0652 0	1	Muffler cover	91	175 016-0492 0	1	Clutch boss
31	900 600-0000 5	3	Washer 5	92	175 010-0492 0	1	Clutch drum
32	433 020-0083 0	2	Lock nut 5	93	900 702-0003 2	1	Circlip 32
43	177 305-0492 0	1	Ratchet ass'y	94	900 819-3620 1	1	Ball bearing 6201
44	900 502-0000 8	1	Nut 8	95	900 701-0001 2	1	Circlip 12
**	<b>177 200-0742 0</b>	1	<b>Recoil starter ass'y</b>	96	175 053-0492 0	1	Stopper
37	-900 241-0401 0	1	Screw 4x10 w/SW	97	101 538-0742 0	1	Plug
46	-177 214-2043 0	1	Washer	98	101 511-0652 0	1	Fan cover
47	-177 215-0492 0	1	Recoil drum	99	163 400-0652 0	1	Stop switch
48	-177 226-0653 0	1	Starter rope	101	900 605-0000 5	1	Spring washer 5
49	-177 228-0653 0	1	Starter handle	102	900 151-0502 5	1	Bolt 5x25
50	-177 227-0533 0	1	Rope guide	103	163 810-0652 0	1	Bracket, switch
51	-177 220-0653 0	1	Rewind spring				
52	-177 209-0742 0	1	Starter case				
53	900 242-0402 0	9	Screw 4x20 w/W, SW				
54	890 112-0603 1	1	Decal, ECHO				

Remarks:

\*: Consists of 29, 30 and 33 thru 36.

\*\*: Consists of 37 and 46 thru 52.

\*\*\*: Consists of 56 thru 59.

73: Includes 74.

PARTS CATALOGUE

