

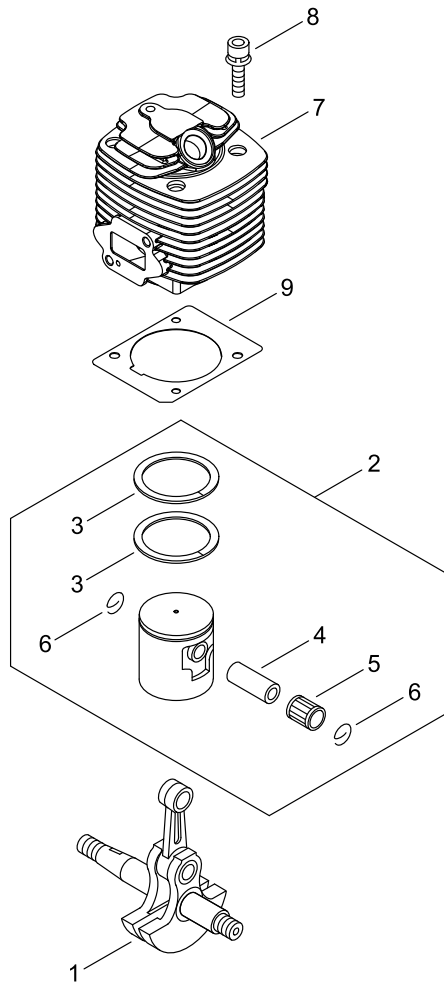
MB-5810/12

Published:10/07/2019

TABLE OF CONTENTS

CYLINDER, PISTON, CRANKSHAFT.....	1
CRANKCASE	3
MAGNETO.....	5
AIR CLEANER, CARBURETOR.....	7
CARBURETOR.....	9
FUEL TANK.....	11
MUFFLER	13
RECOIL STARTER, PULLY	15
FAN CASE	17
CHEMICAL TANK	19
BACKPACK HARNESS	21
THROTTLE	23
PIPE.....	25
ACCESSORIES.....	27
MIST UNIT	29

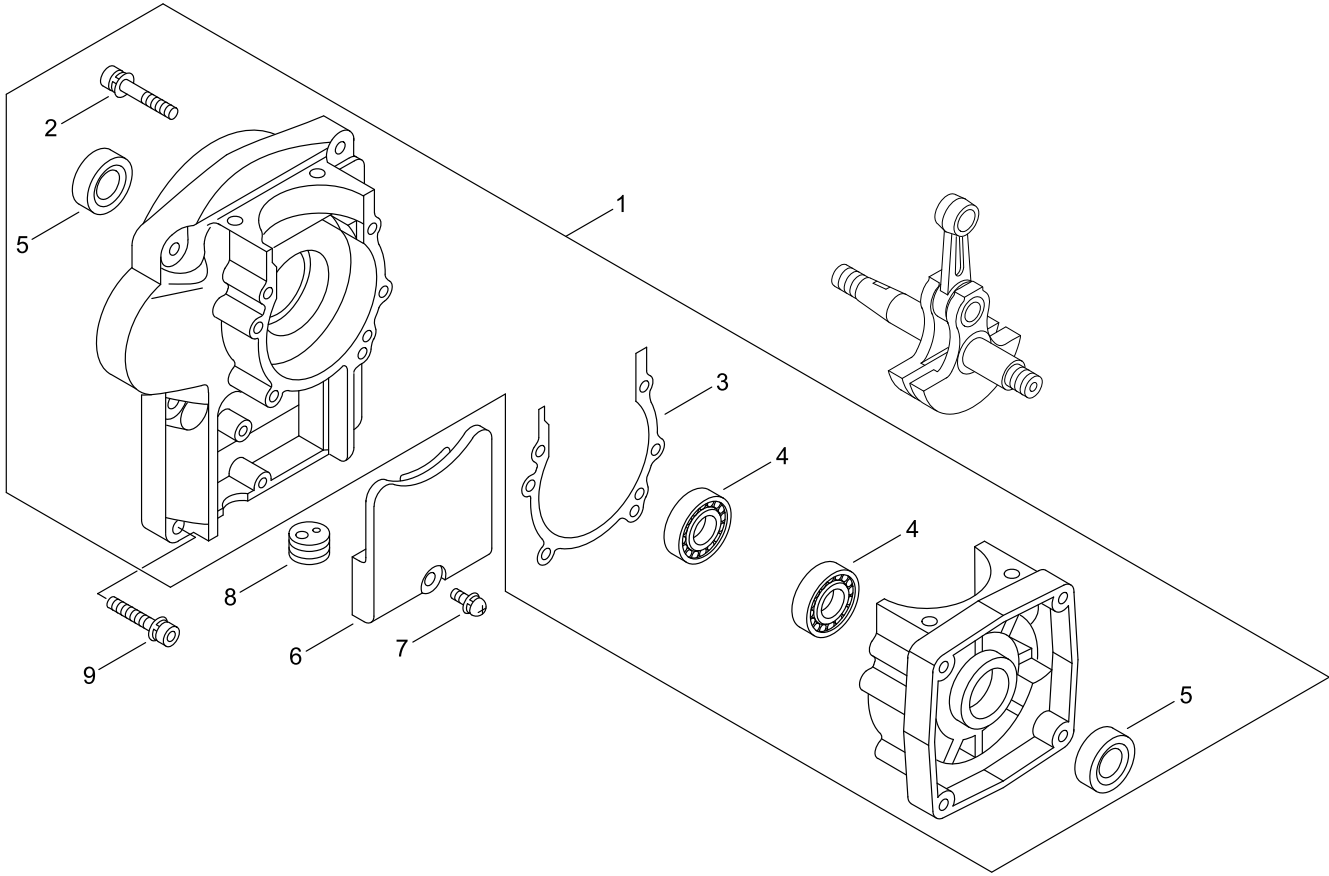
CYLINDER, PISTON, CRANKSHAFT



CYLINDER, PISTON, CRANKSHAFT

KEY NO	LV(+)	Part No	Description	Qty	Standard	Comment
1		A011-000340	CRANKSHAFT,ASM	1		
2		P021-007450	PISTON KIT	1		
3	+	100011-08360	RING, PISTON	2		
4	+	100013-06210	PIN, PISTON	1		
5	+	100012-12330	BEARING, NEEDLE	1		
6	+	100015-00120	CIRCLIP, PISTON PIN	2		
7		A130-000570	CYLINDER	1		
8		900162-05022	BOLT HSH	4	5*22	
9		V100-000741	GASKET,CYL	1		

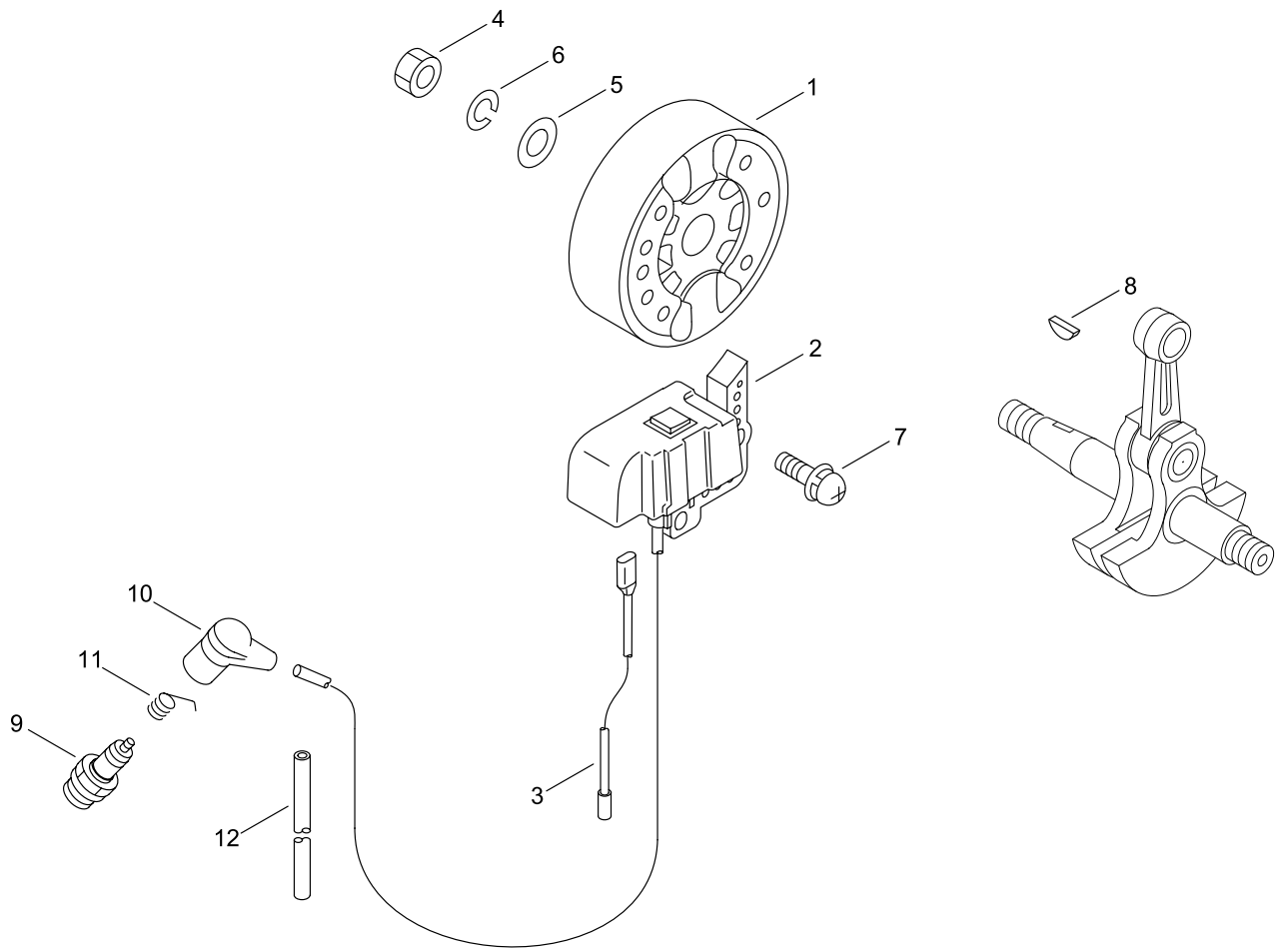
CRANKCASE



CRANKCASE

KEY NO	LV(+)	Part No	Description	Qty	Standard	Comment
1		P100-004220	CRANKCASE SET	1		
2	+	900162-05040	BOLT HSH	4	5*40	
3	+	100242-10721	GASKET, CRANKCASE	1		
4	+	94036-46202	BEARING, BALL	2	6202	
5	+	100213-00310	OILSEAL	2	ISCD 15 25 7	
6		159129-08261	COVER, DUST	1		
7		900238-05018	SCREW	1	5*18	
8		151112-04630	BUSHING	1		
9		91127-05035	BOLT HSH	6	5*35	

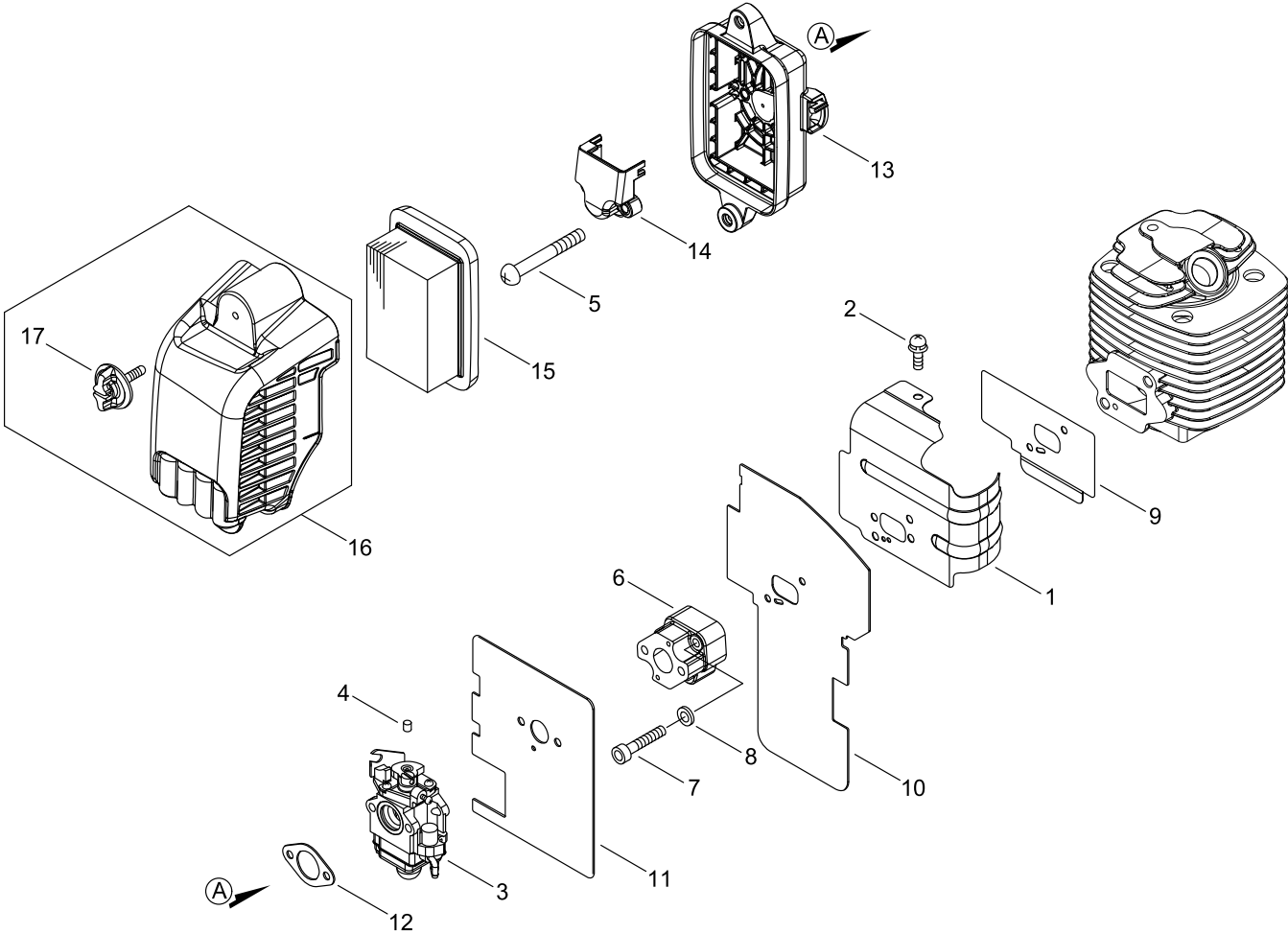
MAGNETO



MAGNETO

KEY NO	LV(+)	Part No	Description	Qty	Standard	Comment
1		156800-06161	ROTOR, MAGNETO	1		
2		A415-000011	MODULE, CDI	1		
3		V485-000190	LEAD	1		
4		900501-00010	NUT	1	10 P1.25	
5		900602-00010	WASHER	1	10	
6		900605-00010	WASHER, SPRING	1	10	
7		900238-05018	SCREW	2	5*18	
8		900323-03014	KEY, WOODRUFF	1	3*14	
9		A425-000000	SPARKPLUG	1	BPMR8Y	
10		159012-03433	CAP, SPARK PLUG	1		
11		159011-03432	COIL, SPARK PLUG	1		
12		156111-06160	TUBE 6.3*8*380	1	6.3*8*380	

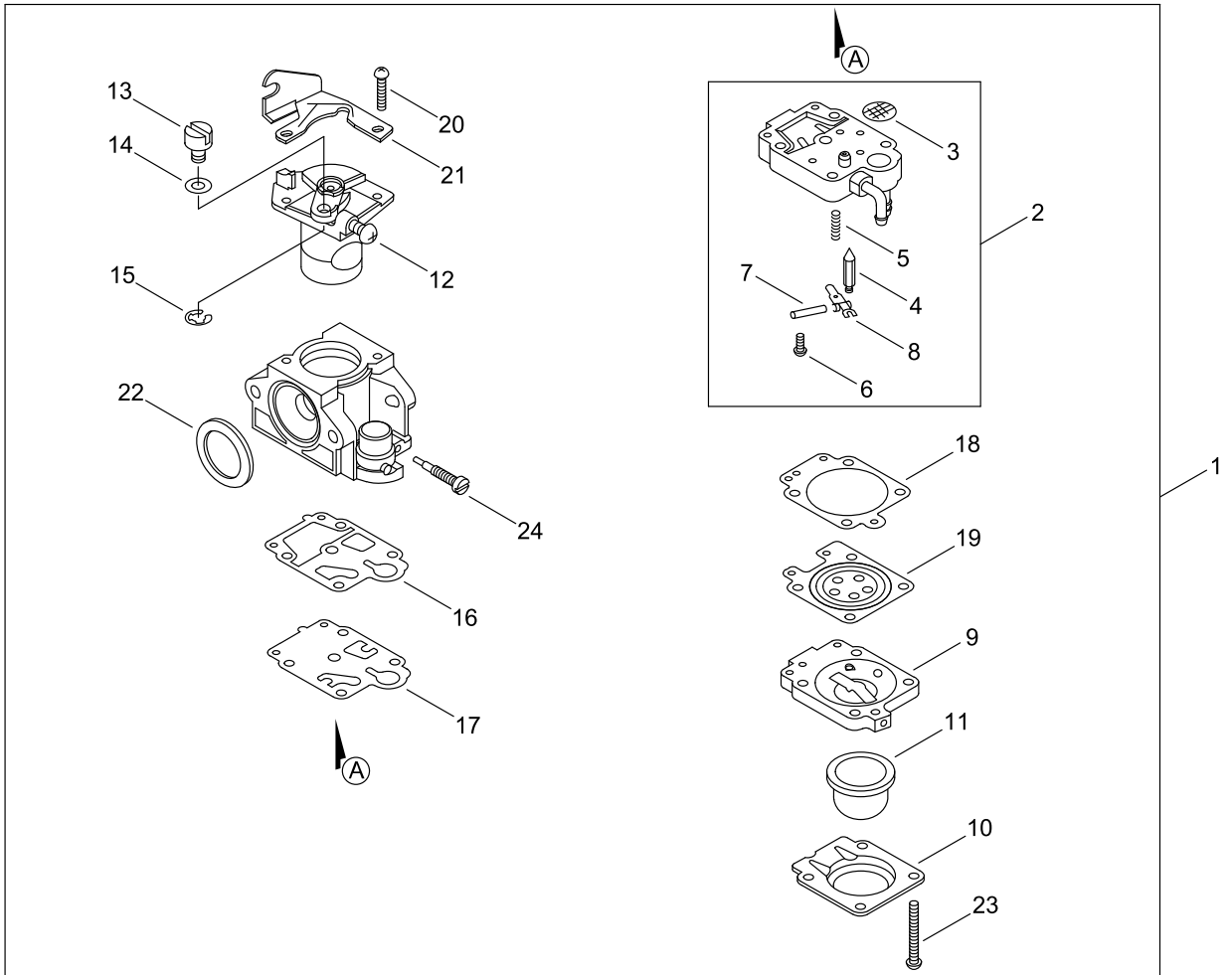
AIR CLEANER, CARBURETOR



AIR CLEANER, CARBURETOR

KEY NO	LV(+)	Part No	Description	Qty	Standard	Comment
1		A160-002881	COVER,CYLINDER	1	IN	
2		900242-05010	SCREW	1	5*10	
3		A021-003630	CARBURETOR, DIAPHRAGM	1	WYK-377	
4		A259-000000	CAP,LIMITER	2	WALBRO 88-265	
5		91331-05060	SCREW	2	5*60	
6		A200-001170	INSULATOR, INTAKE	1		
7		900105-05030	BOLT HSH	2	5*30	
8		145712-14730	WASHER	2		
9		V103-001710	GASKET,INTAKE	1		
10		V103-001720	GASKET,INTAKE	1		
11		V103-002140	GASKET,INTAKE	1	T=1.0	
12		V103-001790	GASKET,INTAKE	1	NP7010 T:1.2	
13		P100-008070	CASE,CLEANER	1		
14		A244-000300	PLATE, PREVENT	1		
15		A226-000032	ELEMENT,AIR FILTER	1		
16		P100-001090	CLEANER COVER ASY	1		
17	+	A235-000380	KNOB,CLEANER LID	2		

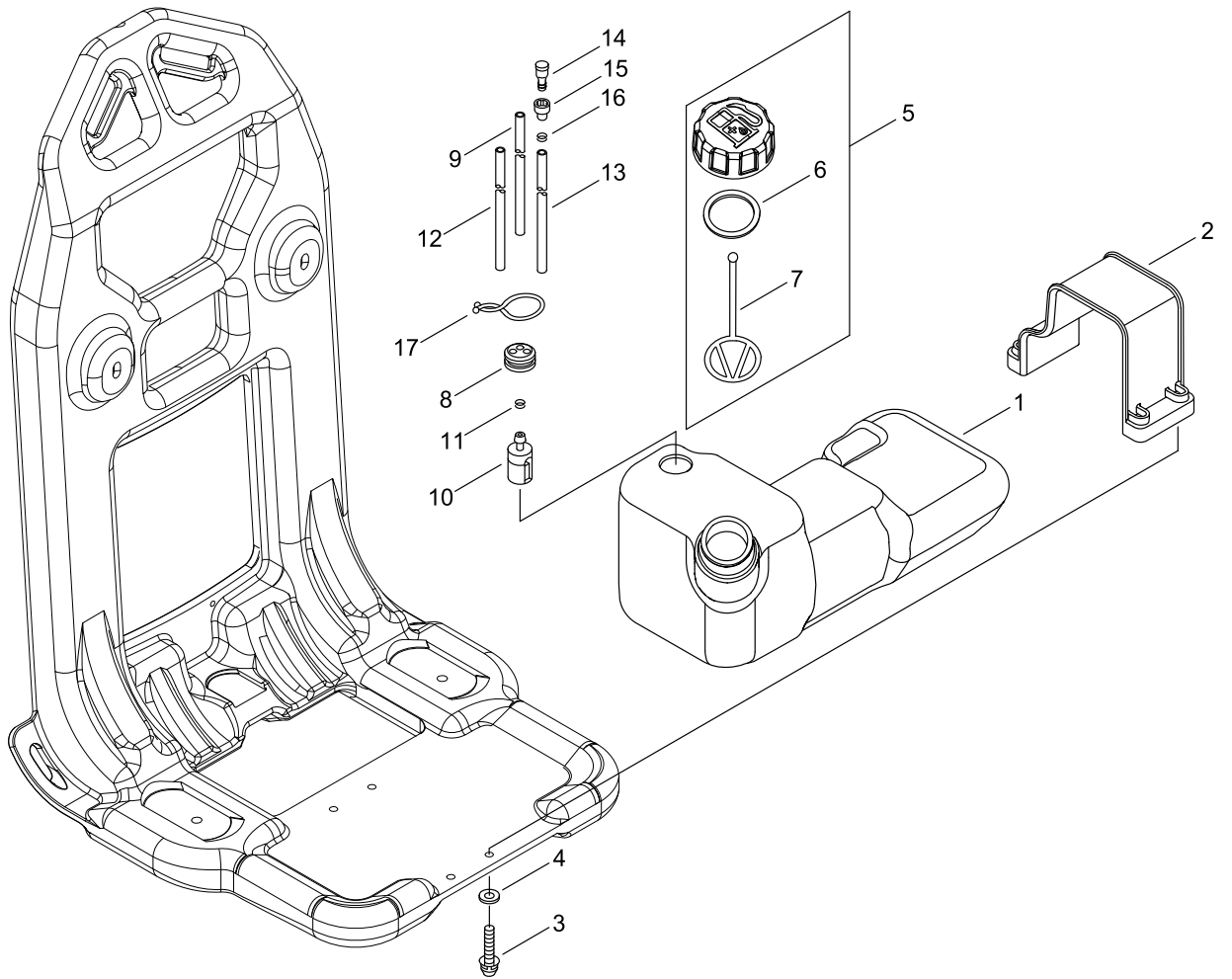
CARBURETOR



CARBURETOR

KEY NO	LV(+)	Part No	Description	Qty	Standard	Comment
1		A021-003630	CARBURETOR, DIAPHRAGM	1	WYK-377	
2	+	123179-05560	BODY ASSY, PUMP	1		
3	++	123126-10631	SCREEN, INLET	1		
4	++	123137-19830	VALVE, INLET NEEDLE	1		
5	++	123122-05560	SPRING, METER. LEVER	1		
6	++	123139-05560	SCREW, M. LEVER PIN	1		
7	++	123138-03930	PIN, METERING LEVER	1		
8	++	123123-03930	LEVER, METERING	1		
9	+	123180-05560	BODY, AIR PURGE	1		
10	+	123142-05560	COVER, PRIMER PUMP	1		
11	+	123181-40630	PUMP, PRIMER	1		
12	+	P003-005540	VALVE, THROTTLE	1		
13	+	123172-45130	SWIVEL	1		
14	+	123149-54230	WASHER	1		
15	+	123173-07930	CLIP	1		
16	+	P003-000100	GASKET, PUMP	1		
17	+	123112-40630	DIAPHRAGM, PUMP	1		
18	+	123140-05560	GASKET, M. DIAPHRAGM	1		
19	+	P003-001850	DIAPHRAGM, METERING	1		
20	+	123114-40630	SCREW	2		
21	+	P003-000180	BRACKET CABLE	1		
22	+	123143-12110	RING, PACKING	1		
23	+	123110-05560	SCREW, PUMP COVER	4		
24	+	P003-001130	NEEDLE, HIGH SPEED	1		

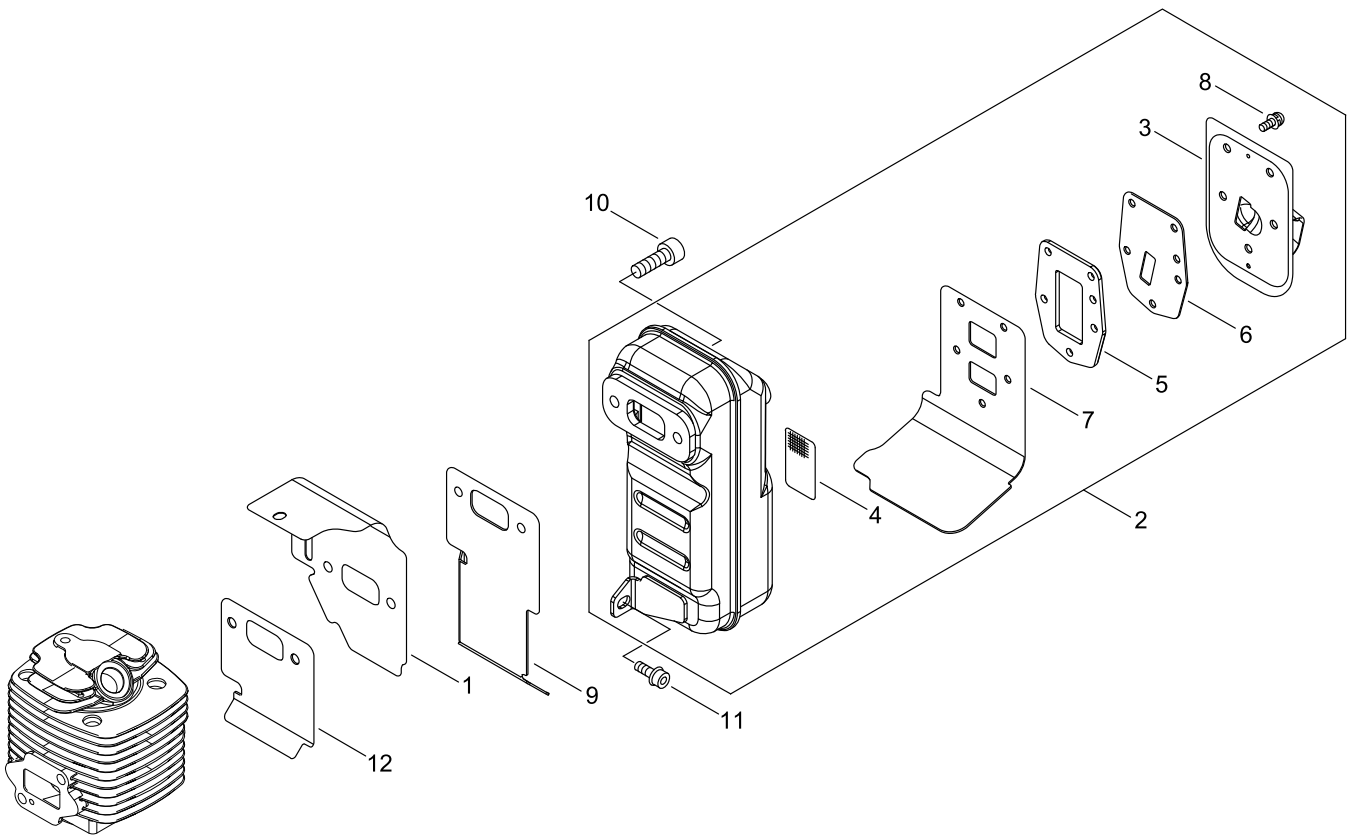
FUEL TANK



FUEL TANK

KEY NO	LV(+)	Part No	Description	Qty	Standard	Comment
1		A350-002150	TANK, FUEL	1		
2		A392-000330	BAND, FUEL TANK	1		
3		900292-05025	SCREW	4	5*25	
4		613019-07350	WASHER 5.5*16*2T	4	5.5*16*2T	
5		P100-006640	CAP,FUEL ASY	1		
6	+	V107-000190	GASKET,FUEL CAP	1	37.9*T2.2	
7	+	131051-56030	CLIP, FUEL CAP	1	100L	
8		132115-55931	GROMMET, FUEL	1	3 ϕ 5	
9		V471-000771	PIPE	1	3X6X280	
10		A369-000460	STRAINER, FUEL	1		
11		V490-001230	CLIP	1		
12		132010-06460	PIPE 3* 6*110	1	3*6*110 YL	
13		V471-005520	PIPE	1	3*6*60	
14		A356-000031	VALVE,CHECK	1		
15		131328-40630	COVER, VENT	1		
16		V490-001230	CLIP	1		
17		132013-05060	CLIP, PIPE	1		

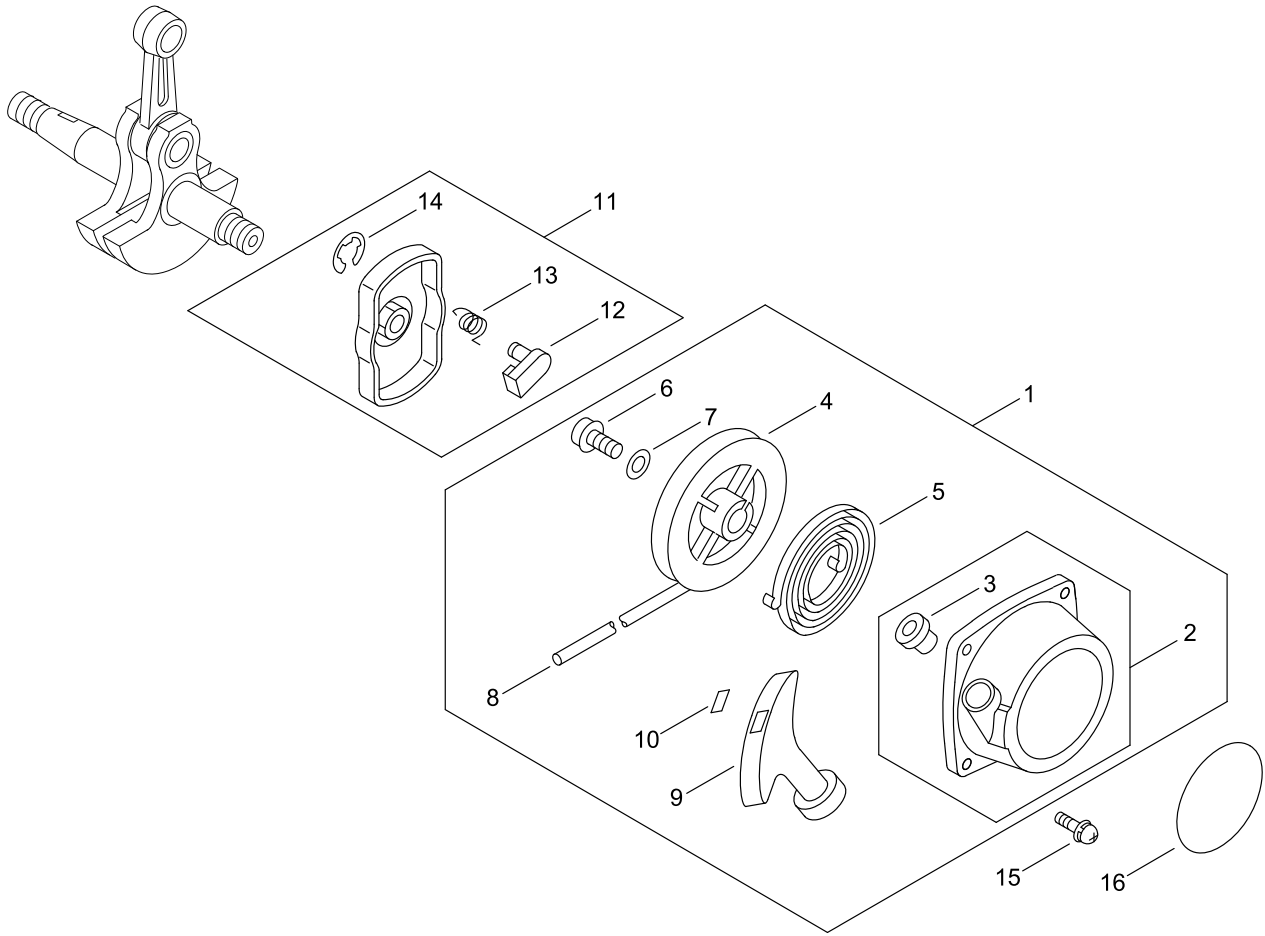
MUFFLER



MUFFLER

KEY NO	LV(+)	Part No	Description	Qty	Standard	Comment
1		A160-000452	COVER,CYLINDER	1		
2		P100-008090	MUFFLER ASY	1		
3	+	A313-001771	GUIDE,EXH	1	DME700	
4	+	145862-06720	SCREEN, MUFFLER	1		
5	+	V104-000302	GASKET,EXHAUST	1		
6	+	V104-000231	GASKET,EXHAUST	1		
7	+	V104-002470	GASKET,EXHAUST	1	ニホンパッキン NP7002	
8	+	900238-04014	SCREW	5	4*14	
9		V104-002480	GASKET,EXHAUST	1	NP7002	
10		900105-06020	BOLT HSH	2	6*20	
11		900106-05016	BOLT HSH, FLANGE	1	5*16	
12		V104-001920	GASKET,EXHAUST	1		

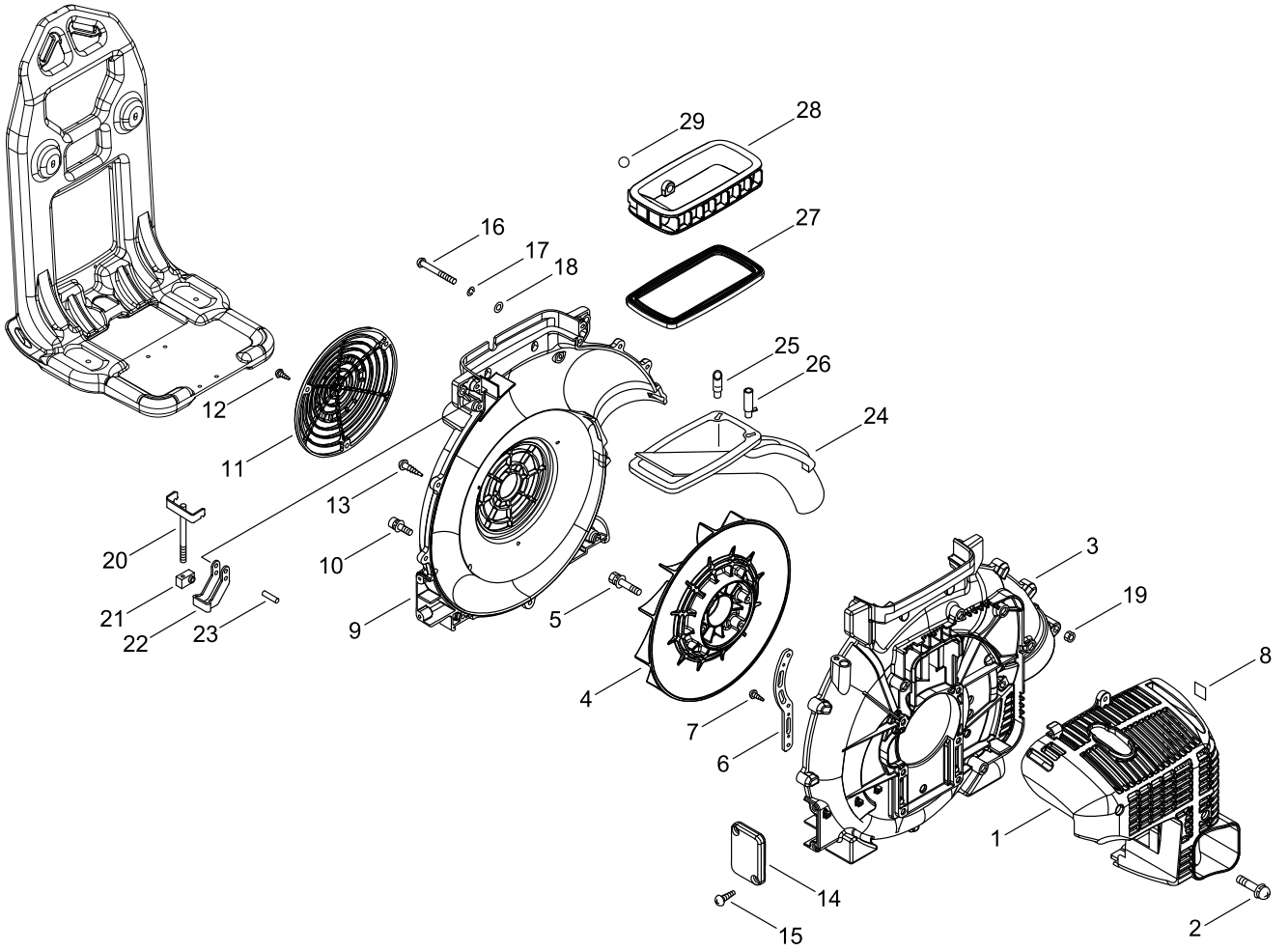
RECOIL STARTER, PULLY



RECOIL STARTER, PULLY

KEY NO	LV(+)	Part No	Description	Qty	Standard	Comment
1		177200-06210	STARTER ASSY	1		
2	+	P022-043970	CASE, STARTER	1		
3	++	177227-42030	GUIDE, ROPE	1		
4	+	177215-11120	DRUM, STARTER	1		
5	+	177220-11120	REWIND SPRING	1		
6	+	177236-40630	SCREW	1		
7	+	P022-022280	WASHER	1		
8	+	177226-11120	ROPE, STARTER	1	3.8*1400	
9	+	177228-11120	GRIP, STARTER	1	3テンセット	
10	+	P022-037670	STOPPER, ROPE	1		
11		177202-06210	PAWL ASSY, STARTER	1		
12	+	A514-000120	RACHET	1		
13	+	177234-40630	SPRING, RETURN	1		
14	+	P022-002100	E-RING	1	4	
15		900292-04018	SCREW	4	4*18	
16		X502-000780	LABEL,ECHO	1		

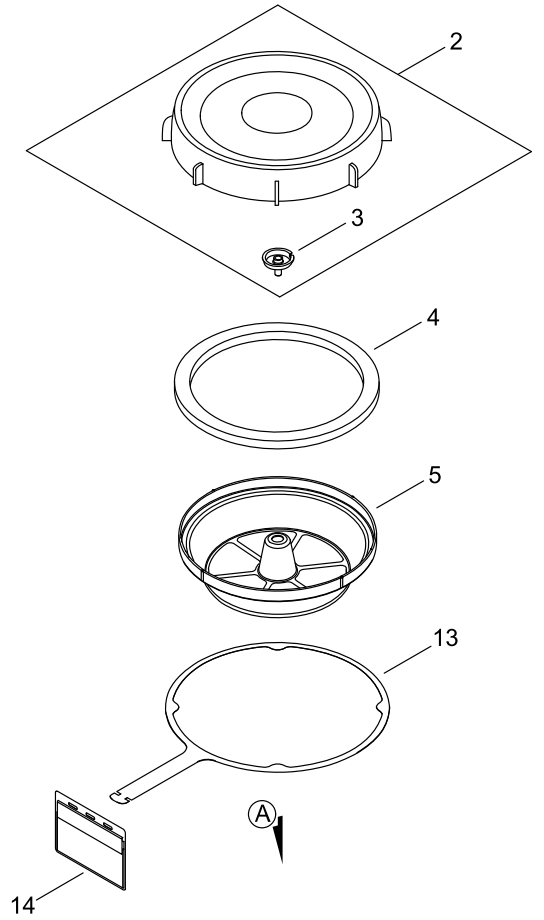
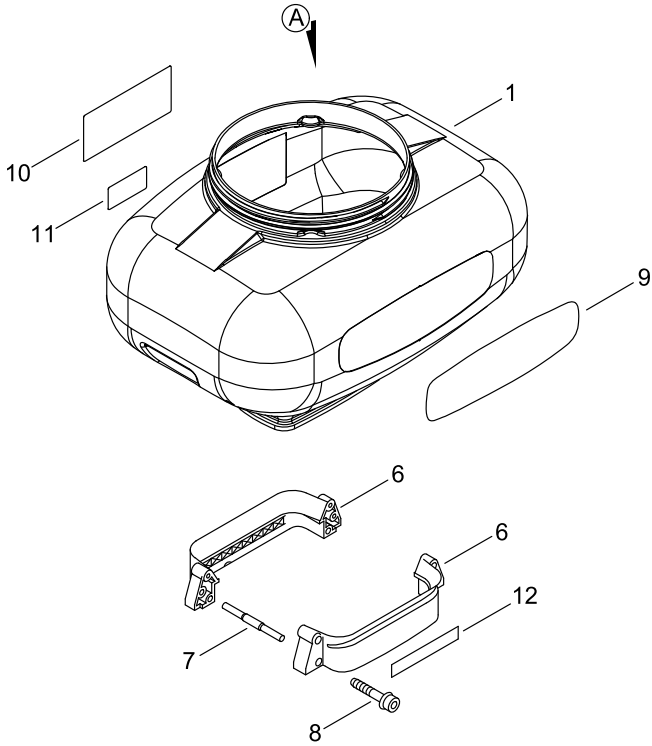
FAN CASE



FAN CASE

KEY NO	LV(+)	Part No	Description	Qty	Standard	Comment
1		A190-001133	COVER,ENGINE	1	DME700	
2		900292-05020	SCREW	5	5*20	
3		E103-001271	CASE,FAN	1		
4		200005-06210	FAN	1		
5		900148-05035	BOLT	4	5*35	
6		C632-000240	PLATE, ENG	2		
7		900238-04010	SCREW	2	4*10	
8		X505-007710	LABEL,CAUTION	1		
9		200105-07714	CASE, FAN	1		
10		91127-05014	BOLT HSH	2	5*14	
11		200124-09861	GRID,BLOWER	1		
12		900286-05016	SCREW, TAPPING	3	5*16	
13		900286-05025	SCREW, TAPPING	11	5*25	
14		E109-000060	LID,FANCASE	1		
15		900286-05016	SCREW, TAPPING	2	5*16	
16		210425-04110	BOLT	2		
17		900609-00005	WASHER, SPRING	2	5	
18		900604-00005	WASHER	2	5	
19		900562-50005	NUT, LOCK	2	5	
20		250915-06310	BOLT, TANK HOLDER	2		
21		250930-06210	CONNECTOR, BRACKET	2		
22		250932-06210	BRACKET, TANK	2		
23		V625-000010	PIN,STRAIGHT 7	2	7*37	
24		P100-008110	PIPE, DUSTER	1		
25		370321-06210	GUIDE,AIR	1		
26		370316-06210	GUIDE, AIR	1		
27		270018-06210	PACKING	1		
28		270010-06212	TANK, LOWER	1		
29		V162-000720	PLUG	1		

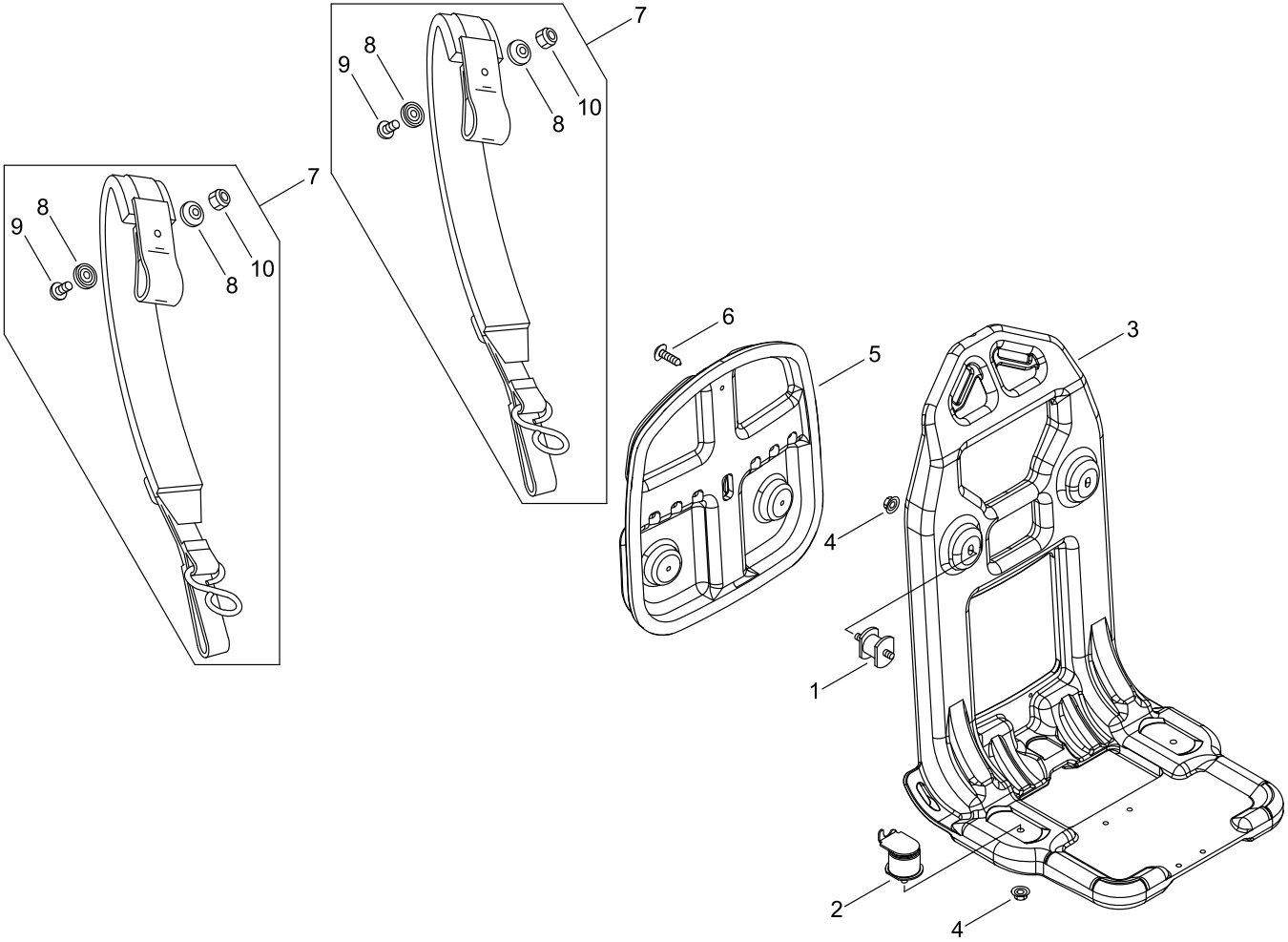
CHEMICAL TANK



CHEMICAL TANK

KEY NO	LV(+)	Part No	Description	Qty	Standard	Comment
1		E110-000033	TANK,CHEMICAL	1	13 L	
2		P100-003000	CAP ASY,TANK	1		
3	+	250013-00310	CAP, INSIDE	1		
4		250011-02011	PACKING	1		
5		254210-03210	FILTER	1		
6		E115-000060	FIXTURE,TANK	2		
7		250914-06210	PIN, TANK HOLDER	2		
8		91148-05035	BOLT, TAPPING	4	5*35	
9		X502-000470	LABEL,ECHO	1		
10		X505-010980	LABEL,CAUTION	1		
11		X533-002050	LABEL,SPEC	1	20L/12L	
12		X503-015320	LABEL,MODEL	1	MB-5810	
13		C126-000070	HOLDER, CASE	1		
14		X769-000010	CASE,CARD	1		

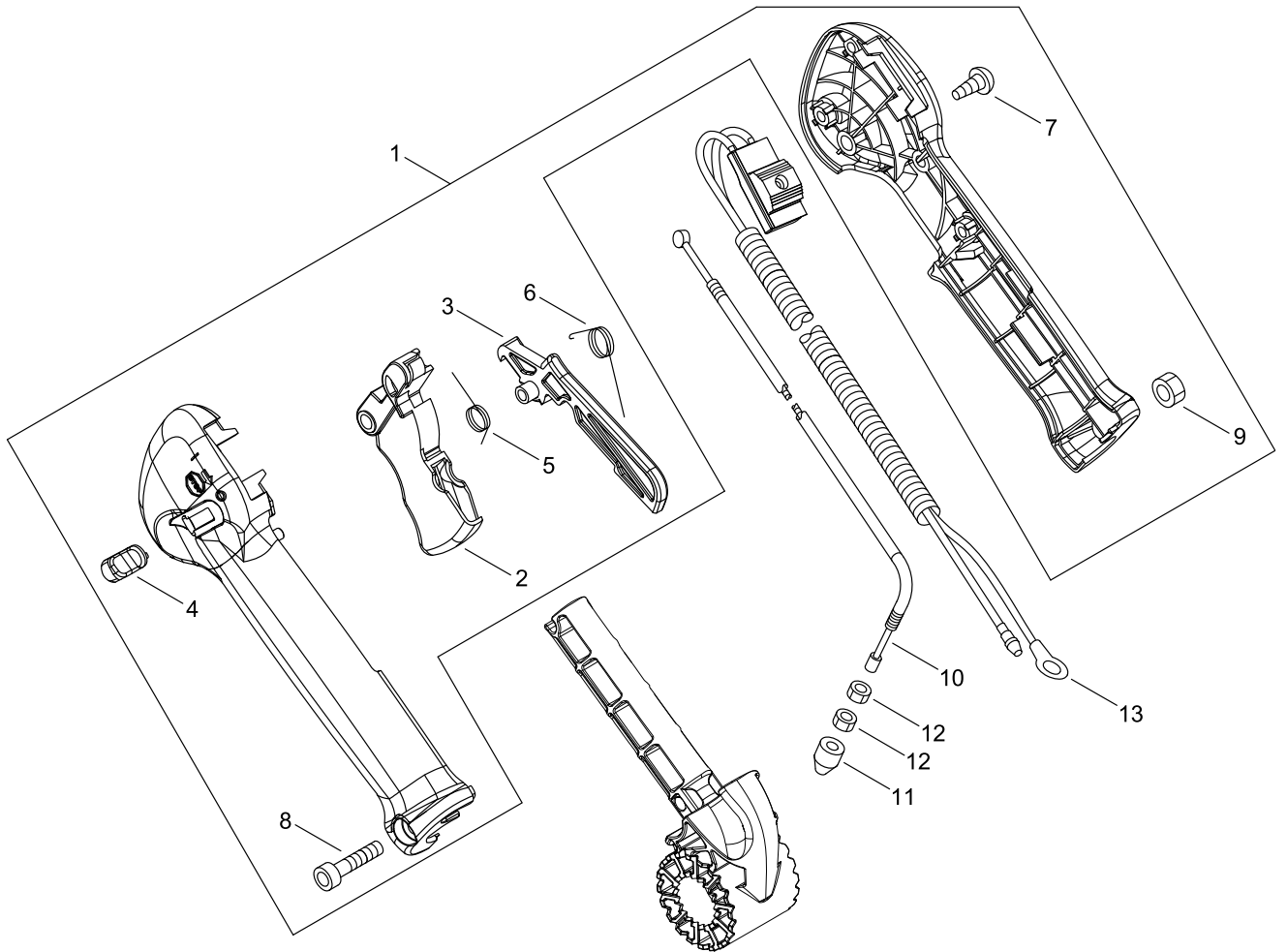
BACKPACK HARNESS



BACKPACK HARNESS

KEY NO	LV(+)	Part No	Description	Qty	Standard	Comment
1		200910-06210	CUSHION	2		
2		V402-000100	CUSHION,6	2		
3		C620-000450	FRAME, BACKPACK	1		
4		250916-06210	NUT	4		
5		C630-000070	SEAT, BACKPACK	1		
6		V491-000090	CLIP	3		
7		P100-008100	HARNESS,ASM BACKPACK	2		
8	+	300328-03210	WASHER, HARNESS	4		
9	+	900216-05016	SCREW	2	5*16	
10	+	900560-00005	NUT, LOCK	2	5	

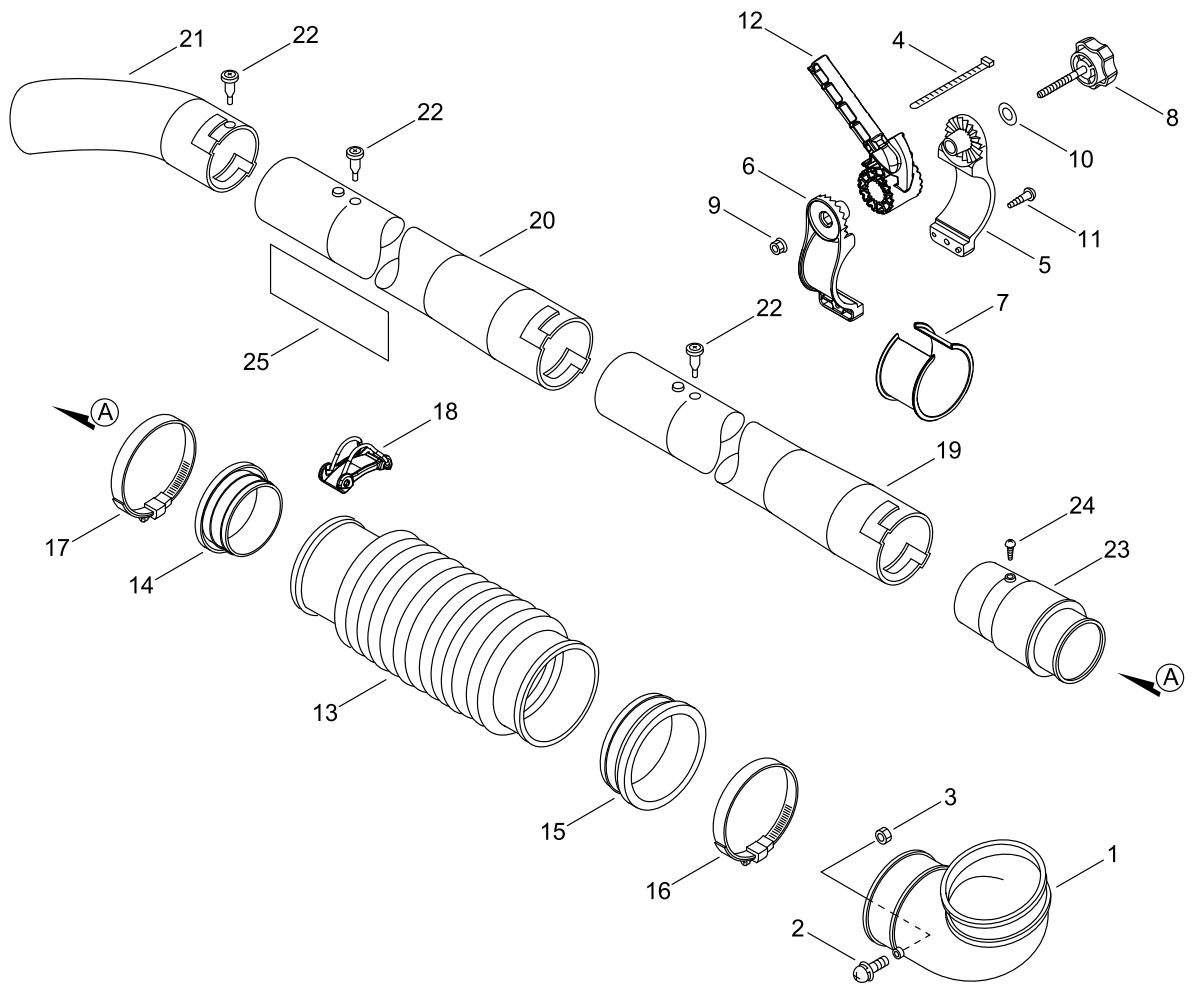
THROTTLE



THROTTLE

KEY NO	LV(+)	Part No	Description	Qty	Standard	Comment
1		P100-003060	THROTTLE ASY	1		
2	+	C450-000270	CONTROL, THROTTLE	1		
3	+	C460-000111	LOCKOUT, THROTTLE	1	70MM	
4	+	C463-000020	KNOB, LATCH	1		
5	+	V452-000360	SPRING,TORSION	1		
6	+	V452-000350	SPRING,TORSION	1		
7	+	900256-04016	SCREW, TAPPING	3	4*16	
8	+	91119-05030	BOLT HSH	1	5*30	
9	+	900500-00005	NUT	1	5	
10		V430-003661	CABLE,BOWDEN	1	1325L32-78.5	
11		V494-000080	CAP	1		
12		900502-00006	NUT	2	6	
13		P021-051640	ON OFF SWITCH	1		

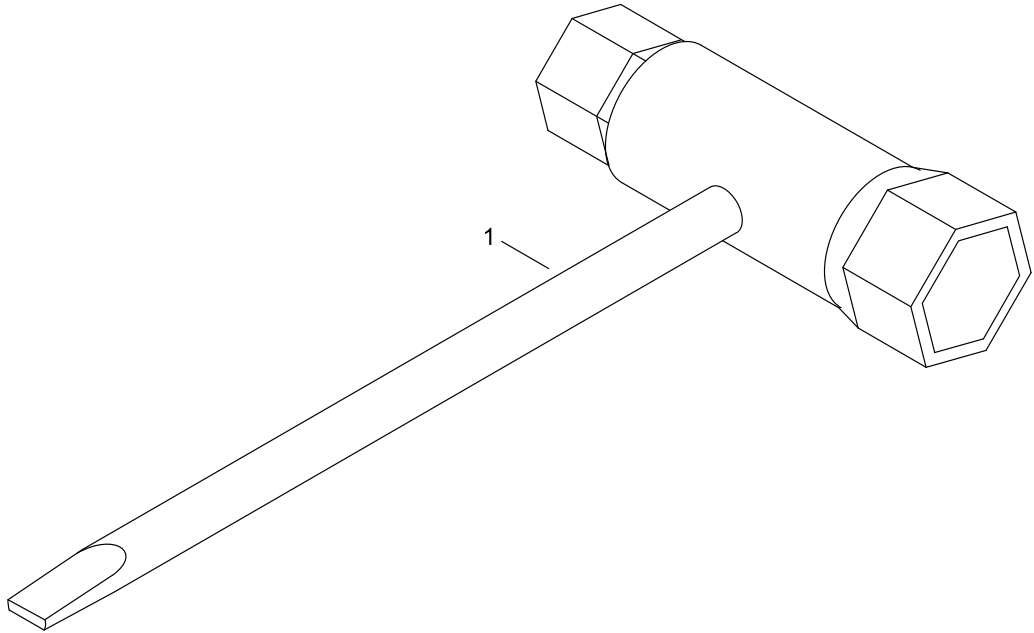
PIPE



PIPE

KEY NO	LV(+)	Part No	Description	Qty	Standard	Comment
1		210011-05510	ELBOW, BLOWING	1		
2		900220-05014	SCREW	1	5*14	
3		900500-00005	NUT	1	5	
4		178121-43230	BAND	1	CV-150 BL	
5		C405-000250	BRACKET,HANDLE	1		
6		C405-000260	BRACKET,HANDLE	1		
7		E281-000000	COLLAR,BLOW PIPE	1		
8		V299-000630	KNOB,FASTENER	1	BOLT/ V299520010X	
9		433019-03933	NUT, FLANGE 6	1	6	
10		178516-07560	WASHER 6	1		
11		900253-05020	SCREW, TAPPING	1	5*20	
12		C472-000110	FIXTURE,TRIGGER BRKT	1		
13		210013-04112	PIPE, FLEXIBLE	1		
14		210032-04110	PACKING, FLX. PIPE	1		
15		210036-04110	GASKET, FLX. PIPE	1		
16		V495-000440	BAND	1	77.8MM /101.6MM	
17		V495-000430	BAND	1	58.7MM / 82.5MM	
18		C487-000420	HOLDER, CABLE	1	CABLE HOLDER ASM	
19		E165-000570	PIPE,BLOWER	1		
20		E165-000580	PIPE,BLOWER	1		
21		E165-000591	PIPE,BLOWER	1		
22		V490-001120	CLIP	3		
23		P100-003030	PIPE, SWIVEL	1		
24		900256-05010	SCREW, TAPPING	1	5*10	
25		X524-007290	LABEL	1	E20	

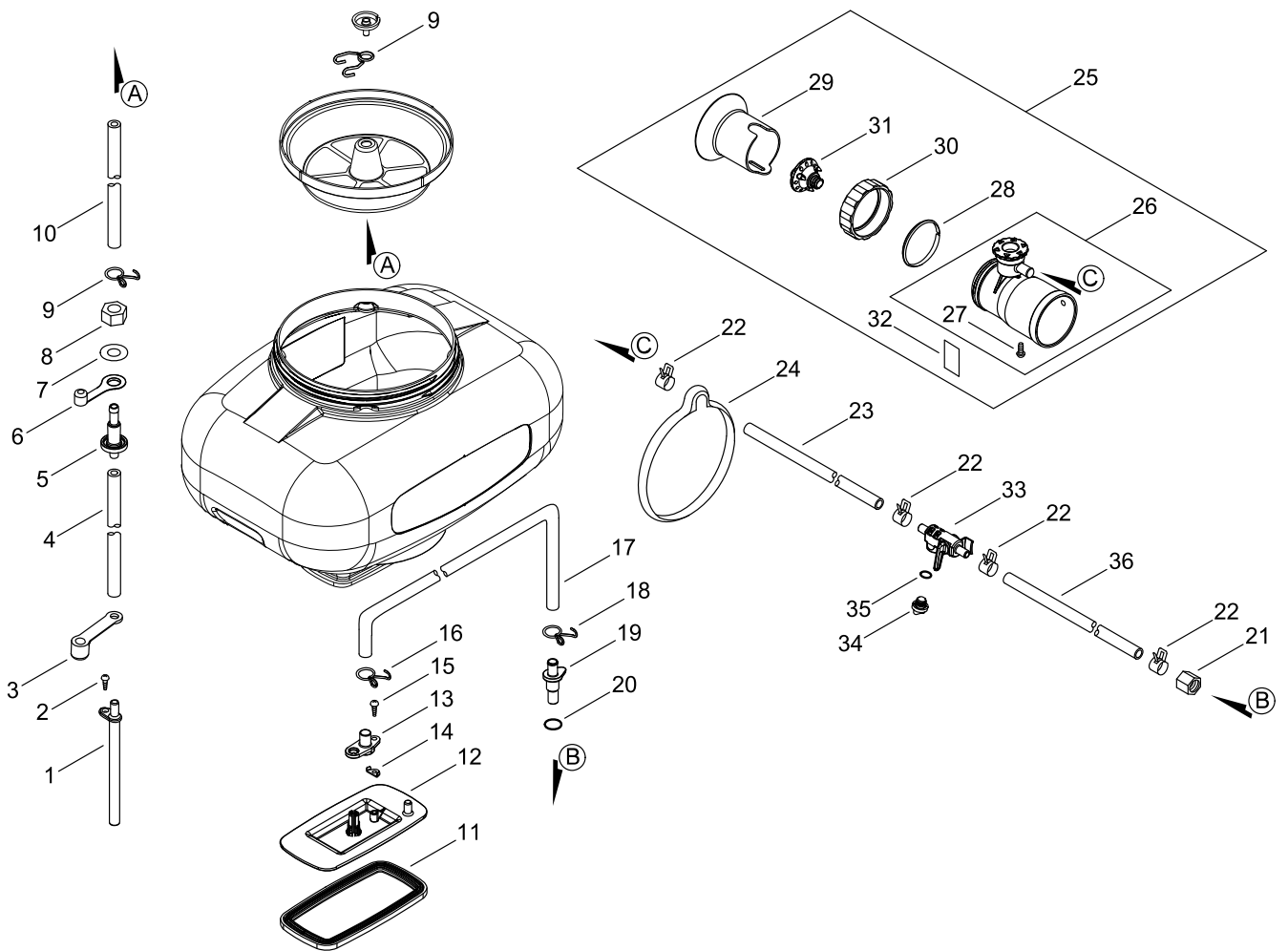
ACCESSORIES



ACCESSORIES

KEY NO	LV(+)	Part No	Description	Qty	Standard	Comment
1		X602-000020	TOOL,WRENCH	1	17*19 L200	

MIST UNIT



MIST UNIT

KEY NO	LV(+)	Part No	Description	Qty	Standard	Comment
1		E105-000001	PIPE,AIR	1		
2		900286-05016	SCREW, TAPPING	1	5*16	
3		363021-01110	PLUG	1		
4		363011-00210	PIPE, AIR (OUTER)	1		
5		363017-00310	CONNECTOR, PIPE	1		
6		363022-00510	PLUG	1		
7		V309-000170	WASHER,CIRCULAR 12	1	12.5X18X1.0	
8		363019-00310	NUT, CONNECTOR	1		
9		V490-001410	CLIP	2	10.5	
10		363014-00310	PIPE (INNER)	1	7*11*400BL	
11		E137-000021	PACKING,SHUTTER	1		
12		253010-08013	PLATE, TANK BOTTOM	1		
13		E230-000190	NIPPLE,HOSE	1		
14		V150-004300	PLATE,EYE	1		
15		91428-05015	SCREW, TAPPING	1	5*15	
16		V490-001540	CLIP	1	15.8	
17		V471-005130	PIPE	1	10*15.0*350	
18		V490-001550	CLIP	1	14.5	
19		357010-01110	NIPPLE, OUTLET	1		
20		357014-01110	O-RING	1	3*13	
21		357015-01110	NUT, HOLLOW	1		
22		V495-000310	BAND	4		
23		V471-003300	PIPE	1	9*13*770	
24		357911-00111	CLIP, PIPE	1		
25		E024-000020	HEAD,BLOW	1		
26	+	P100-001820	HEAD,BLOW	1		
27	++	900246-05012	SCREW, TAPPING	1	5*12	
28	+	212513-01110	RING, MISTING NOZZLE	1		
29	+	212515-01110	COLLAR, NOZZLE	1		
30	+	212514-01110	NUT, MISTING NOZZLE	1		
31	+	P021-051600	NOZZLE	1		
32	+	890031-01110	LABEL, MIST	1		
33		E022-000031	COCK,LIQUID	1	ドレン付/Φ8	
34		E328-000410	PLUG,DRAIN	1		
35		900725-01013	O-RING	1	JASO 1013	
36		V471-003290	PIPE	1	9*13*770	

NUMERICAL PARTS INDEX

Part No	Part description	Page	Part No	Part description	Page	Part No	Part description	Page
100011-0-8360	RING, PISTON	2	131051-5-6030	CLIP, FUEL CAP	12	200005-0-6210	FAN	18
100012-1-2330	BEARING, NEEDLE	2	131328-4-0630	COVER, VENT	12	200105-0-7714	CASE, FAN	18
100013-0-6210	PIN, PISTON	2	132010-0-6460	PIPE 3* 6*110	12	200124-0-9861	GRID,BLOWER	18
100015-0-0120	CIRCLIP, PISTON PIN	2	132013-0-5060	CLIP, PIPE	12	200910-0-6210	CUSHION	22
100213-0-0310	OILSEAL	4	132115-5-5931	GROMMET, FUEL	12	210011-0-5510	ELBOW, BLOWING	26
100242-1-0721	GASKET, CRANKCASE	4	145712-1-4730	WASHER	8	210013-0-4112	PIPE, FLEXIBLE	26
123110-0-5560	SCREW, PUMP COVER	10	145862-0-6720	SCREEN, MUFFLER	14	210032-0-4110	PACKING, FLX. PIPE	26
123112-4-0630	DIAPHRAGM, PUMP	10	151112-0-4630	BUSHING	4	210036-0-4110	GASKET, FLX. PIPE	26
123114-4-0630	SCREW	10	156111-0-6160	TUBE 6.3*8*380	6	210425-0-4110	BOLT	18
123122-0-5560	SPRING, METER. LEVER	10	156800-0-6161	ROTOR, MAGNETO	6	212513-0-1110	RING, MISTING NOZZLE	30
123123-0-3930	LEVER, METERING	10	159011-0-3432	COIL, SPARK PLUG	6	212514-0-1110	NUT, MISTING NOZZLE	30
123126-1-0631	SCREEN, INLET	10	159012-0-3433	CAP, SPARK PLUG	6	212515-0-1110	COLLAR, NOZZLE	30
123137-1-9830	VALVE, INLET NEEDLE	10	159129-0-8261	COVER, DUST	4	250011-0-2011	PACKING	20
123138-0-3930	PIN, METERING LEVER	10	177200-0-6210	STARTER ASSY	16	250013-0-0310	CAP, INSIDE	20
123139-0-5560	SCREW, M. LEVER PIN	10	177202-0-6210	PAWL ASSY, STARTER	16	250914-0-6210	PIN, TANK HOLDER	20
123140-0-5560	GASKET, M. DIAPHRAGM	10	177215-1-1120	DRUM, STARTER	16	250915-0-6310	BOLT, TANK HOLDER	18
123142-0-5560	COVER, PRIMER PUMP	10	177220-1-1120	REWIND SPRING	16	250916-0-6210	NUT	22
123143-1-2110	RING, PACKING	10	177226-1-1120	ROPE, STARTER	16	250930-0-6210	CONNECTOR, BRACKET	18
123149-5-4230	WASHER	10	177227-4-2030	GUIDE, ROPE	16	250932-0-6210	BRACKET, TANK	18
123172-4-5130	SWIVEL	10	177228-1-1120	GRIP, STARTER	16	253010-0-8013	PLATE, TANK BOTTOM	30
123173-0-7930	CLIP	10	177234-4-0630	SPRING, RETURN	16	254210-0-3210	FILTER	20
123179-0-5560	BODY ASSY, PUMP	10	177236-4-0630	SCREW	16	270010-0-6212	TANK, LOWER	18
123180-0-5560	BODY, AIR PURGE	10	178121-4-3230	BAND	26	270018-0-6210	PACKING	18
123181-4-0630	PUMP, PRIMER	10	178516-0-7560	WASHER 6	26	300328-0-3210	WASHER, HARNESS	22

NUMERICAL PARTS INDEX

Part No	Part description	Page	Part No	Part description	Page	Part No	Part description	Page
357010-0-1110	NIPPLE, OUTLET	30	900238-0-4014	SCREW	14	900609-0-0005	WASHER, SPRING	18
357014-0-1110	O-RING	30	900238-0-5018	SCREW	4	900725-0-1013	O-RING	30
357015-0-1110	NUT, HOLLOW	30	900238-0-5018	SCREW	6	91119-05-030	BOLT HSH	24
357911-0-0111	CLIP, PIPE	30	900242-0-5010	SCREW	8	91127-05-014	BOLT HSH	18
363011-0-0210	PIPE, AIR (OUTER)	30	900246-0-5012	SCREW, TAPPING	30	91127-05-035	BOLT HSH	4
363014-0-0310	PIPE (INNER)	30	900253-0-5020	SCREW, TAPPING	26	91148-05-035	BOLT, TAPPING	20
363017-0-0310	CONNECTOR, PIPE	30	900256-0-4016	SCREW, TAPPING	24	91331-05-060	SCREW	8
363019-0-0310	NUT, CONNECTOR	30	900256-0-5010	SCREW, TAPPING	26	91428-05-015	SCREW, TAPPING	30
363021-0-1110	PLUG	30	900286-0-5016	SCREW, TAPPING	18	94036-46-202	BEARING, BALL	4
363022-0-0510	PLUG	30	900286-0-5016	SCREW, TAPPING	30	A011-00-0340	CRANKSHAFT,ASM	2
370316-0-6210	GUIDE, AIR	18	900286-0-5025	SCREW, TAPPING	18	A021-00-3630	CARBURETOR, DIAPHRAGM	8
370321-0-6210	GUIDE,AIR	18	900292-0-4018	SCREW	16	A021-00-3630	CARBURETOR, DIAPHRAGM	10
433019-0-3933	NUT, FLANGE 6	26	900292-0-5020	SCREW	18	A130-00-0570	CYLINDER	2
613019-0-7350	WASHER 5.5*16*2T	12	900292-0-5025	SCREW	12	A160-00-0452	COVER,CYLINDER	14
890031-0-1110	LABEL, MIST	30	900323-0-3014	KEY, WOODRUFF	6	A160-00-2881	COVER,CYLINDER	8
900105-0-5030	BOLT HSH	8	900500-0-0005	NUT	24	A190-00-1133	COVER,ENGINE	18
900105-0-6020	BOLT HSH	14	900500-0-0005	NUT	26	A200-00-1170	INSULATOR, INTAKE	8
900106-0-5016	BOLT HSH, FLANGE	14	900501-0-0010	NUT	6	A226-00-0032	ELEMENT,AIR FILTER	8
900148-0-5035	BOLT	18	900502-0-0006	NUT	24	A235-00-0380	KNOB,CLEANER LID	8
900162-0-5022	BOLT HSH	2	900560-0-0005	NUT, LOCK	22	A244-00-0300	PLATE, PREVENT	8
900162-0-5040	BOLT HSH	4	900562-5-0005	NUT, LOCK	18	A259-00-0000	CAP,LIMITER	8
900216-0-5016	SCREW	22	900602-0-0010	WASHER	6	A313-00-1771	GUIDE,EXH	14
900220-0-5014	SCREW	26	900604-0-0005	WASHER	18	A350-00-2150	TANK, FUEL	12
900238-0-4010	SCREW	18	900605-0-0010	WASHER, SPRING	6	A356-00-0031	VALVE,CHECK	12

NUMERICAL PARTS INDEX

Part No	Part description	Page	Part No	Part description	Page	Part No	Part description	Page
A369-00-0460	STRAINER, FUEL	12	E165-00-0570	PIPE,BLOWER	26	P100-00-6640	CAP,FUEL ASY	12
A392-00-0330	BAND, FUEL TANK	12	E165-00-0580	PIPE,BLOWER	26	P100-00-8070	CASE,CLEANER	8
A415-00-0011	MODULE,CDI	6	E165-00-0591	PIPE,BLOWER	26	P100-00-8090	MUFFLER ASY	14
A425-00-0000	SPARKPLUG	6	E230-00-0190	NIPPLE,HOSE	30	P100-00-8100	HARNES,ASM BACKPACK	22
A514-00-0120	RACHET	16	E281-00-0000	COLLAR,BLOW PIPE	26	P100-00-8110	PIPE, DUSTER	18
C126-00-0070	HOLDER, CASE	20	E328-00-0410	PLUG,DRAIN	30	V100-00-0741	GASKET,CYL	2
C405-00-0250	BRACKET,HANDLE	26	P003-00-0100	GASKET, PUMP	10	V103-00-1710	GASKET,INTAKE	8
C405-00-0260	BRACKET,HANDLE	26	P003-00-0180	BRACKET CABLE	10	V103-00-1720	GASKET,INTAKE	8
C450-00-0270	CONTROL, THROTTLE	24	P003-00-1130	NEEDLE, HIGH SPEED	10	V103-00-1790	GASKET,INTAKE	8
C460-00-0111	LOCKOUT, THROTTLE	24	P003-00-1850	DIAPHRAGM, METERING	10	V103-00-2140	GASKET,INTAKE	8
C463-00-0020	KNOB, LATCH	24	P003-00-5540	VALVE, THROTTLE	10	V104-00-0231	GASKET,EXHAUST	14
C472-00-0110	FIXTURE,TRIGGER BRKT	26	P021-00-7450	PISTON KIT	2	V104-00-0302	GASKET,EXHAUST	14
C487-00-0420	HOLDER, CABLE	26	P021-05-1600	NOZZLE	30	V104-00-1920	GASKET,EXHAUST	14
C620-00-0450	FRAME, BACKPACK	22	P021-05-1640	ON OFF SWITCH	24	V104-00-2470	GASKET,EXHAUST	14
C630-00-0070	SEAT, BACKPACK	22	P022-00-2100	E-RING	16	V104-00-2480	GASKET,EXHAUST	14
C632-00-0240	PLATE, ENG	18	P022-02-2280	WASHER	16	V107-00-0190	GASKET,FUEL CAP	12
E022-00-0031	COCK,LIQUID	30	P022-03-7670	STOPPER, ROPE	16	V150-00-4300	PLATE,EYE	30
E024-00-0020	HEAD,BLOW	30	P022-04-3970	CASE, STARTER	16	V162-00-0720	PLUG	18
E103-00-1271	CASE,FAN	18	P100-00-1090	CLEANER COVER ASY	8	V299-00-0630	KNOB,FASTENER	26
E105-00-0001	PIPE,AIR	30	P100-00-1820	HEAD,BLOW	30	V309-00-0170	WASHER,CIRCULAR 12	30
E109-00-0060	LID,FANCASE	18	P100-00-3000	CAP ASY,TANK	20	V402-00-0100	CUSHION,6	22
E110-00-0033	TANK,CHEMICAL	20	P100-00-3030	PIPE, SWIVEL	26	V430-00-3661	CABLE,BOWDEN	24
E115-00-0060	FIXTURE,TANK	20	P100-00-3060	THROTTLE ASY	24	V452-00-0350	SPRING,TORSION	24
E137-00-0021	PACKING,SHUTTER	30	P100-00-4220	CRANKCASE SET	4	V452-00-0360	SPRING,TORSION	24

NUMERICAL PARTS INDEX

Part No	Part description	Page	Part No	Part description	Page
V471-00-0771	PIPE	12	X602-00-0020	TOOL,WRENCH	28
V471-00-3290	PIPE	30	X769-00-0010	CASE,CARD	20
V471-00-3300	PIPE	30			
V471-00-5130	PIPE	30			
V471-00-5520	PIPE	12			
V485-00-0190	LEAD	6			
V490-00-1120	CLIP	26			
V490-00-1230	CLIP	12			
V490-00-1410	CLIP	30			
V490-00-1540	CLIP	30			
V490-00-1550	CLIP	30			
V491-00-0090	CLIP	22			
V494-00-0080	CAP	24			
V495-00-0310	BAND	30			
V495-00-0430	BAND	26			
V495-00-0440	BAND	26			
V625-00-0010	PIN,STRAIGHT 7	18			
X502-00-0470	LABEL,ECHO	20			
X502-00-0780	LABEL,ECHO	16			
X503-01-5320	LABEL,MODEL	20			
X505-00-7710	LABEL,CAUTION	18			
X505-01-0980	LABEL,CAUTION	20			
X524-00-7290	LABEL	26			
X533-00-2050	LABEL,SPEC	20			