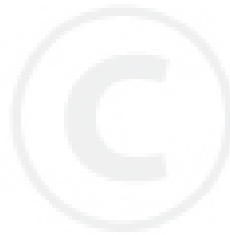




**PARTS CATALOG**

**DUSTER / MIST BLOWER**

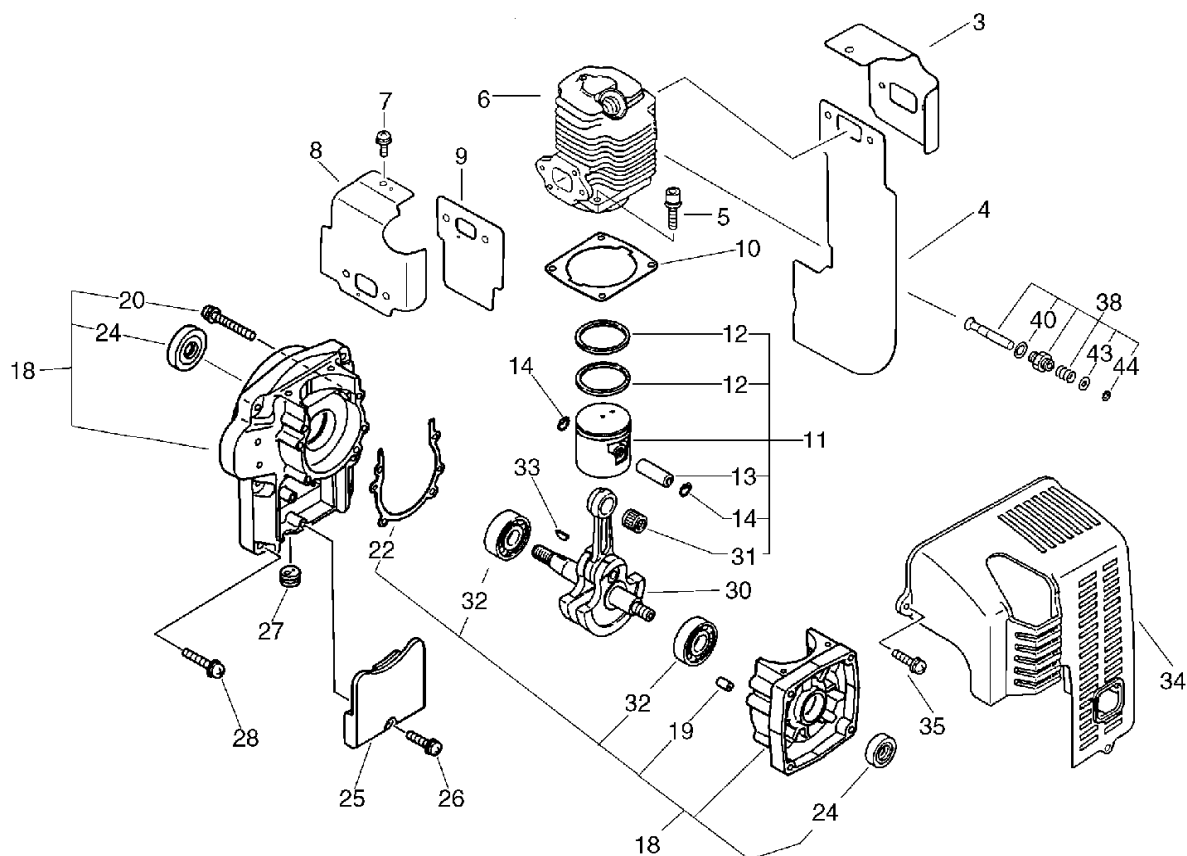
**DMC521**



DMC521

# 1. Cylinder, Crankcase, Piston

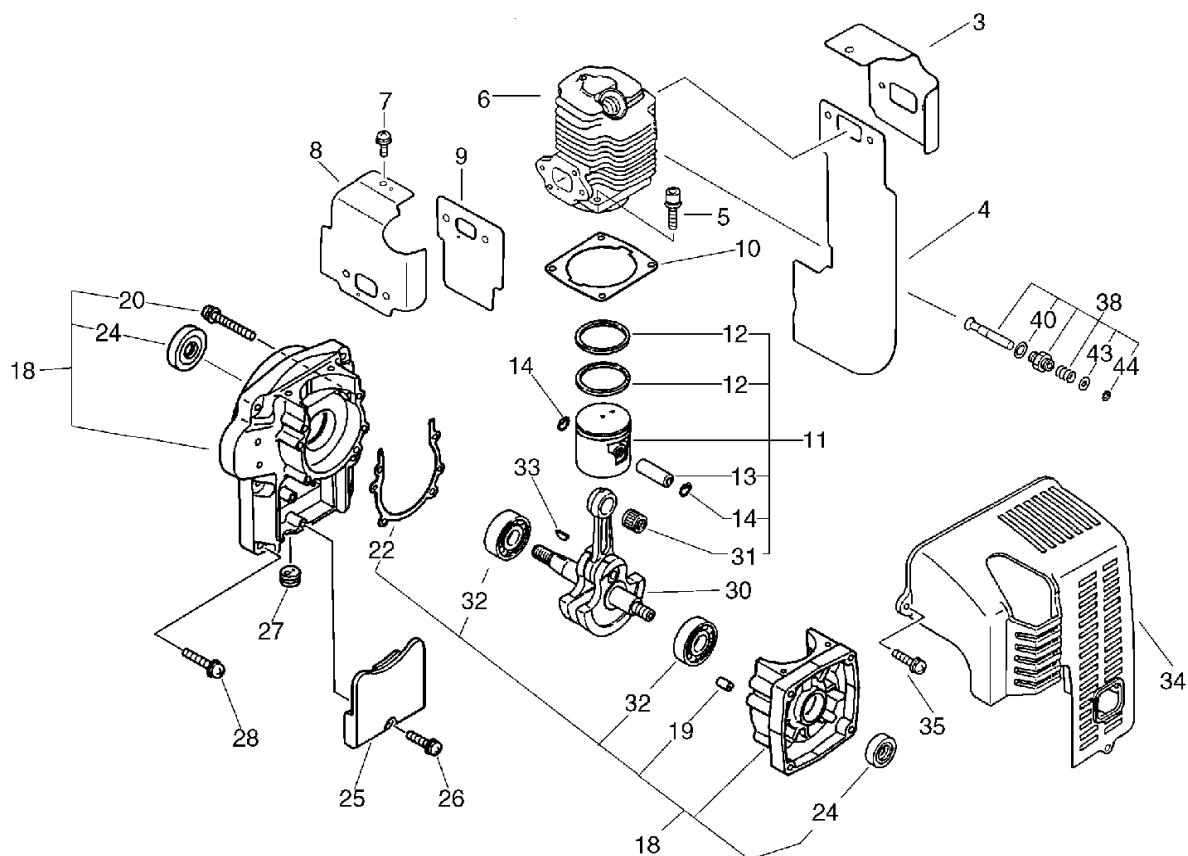
## No.1



KEY	LV	PART NUMBER	Q'TY	DESCRIPTION	REMARKS	NOTE1	NOTE2
3		101514-06210	1	COVER, CYLINDER			
4		145512-06210	1	GASKET, MUFFLER		Sus. by 145512-06211	
4		145512-06211	1	GASKET, MUFFLER			
5		900162-05020	4	BOLT, H.S. 5*20	5*20 W,SW		
6		101011-07310	1	CYLINDER			
7		900242-05010	1	SCREW 5*10	5*10		
8		101514-06410	1	COVER, CYLINDER			
9		130010-06410	1	GASKET, INTAKE			
10		101010-10722	1	GASKET, CYL. BASE			
11		100000-07310	1	PISTON KIT			
12	+	100011-33730	2	RING, PISTON			
13	+	100013-06210	1	PIN, PISTON			
14	+	100015-00120	2	CIRCLIP, PISTON PIN			
31	+	100012-12331	1	BEARING, NEEDLE			
18		100204-08261	1	CRANKCASE KIT			
19	+	100215-03930	2	PIN, DOWEL			
20	+	900242-05040	4	SCREW 5*40	5*40		
22	+	100242-10721	1	GASKET, CRANKCASE			
24	+	100213-00310	2	OILSEAL	ISCD 15 25 7		
32	+	900810-36202	2	BEARING, BALL 6202	6202/C3		
25		159129-08260	1	COVER, DUST			
26		900242-05018	1	SCREW 5*18	5*18	Sus. by 900292-05018	
26		900292-05018	1	SCREW 5*18	5*18 SUS		
27		150112-00310	1	BUSHING			

# 1. Cylinder, Crankcase, Piston

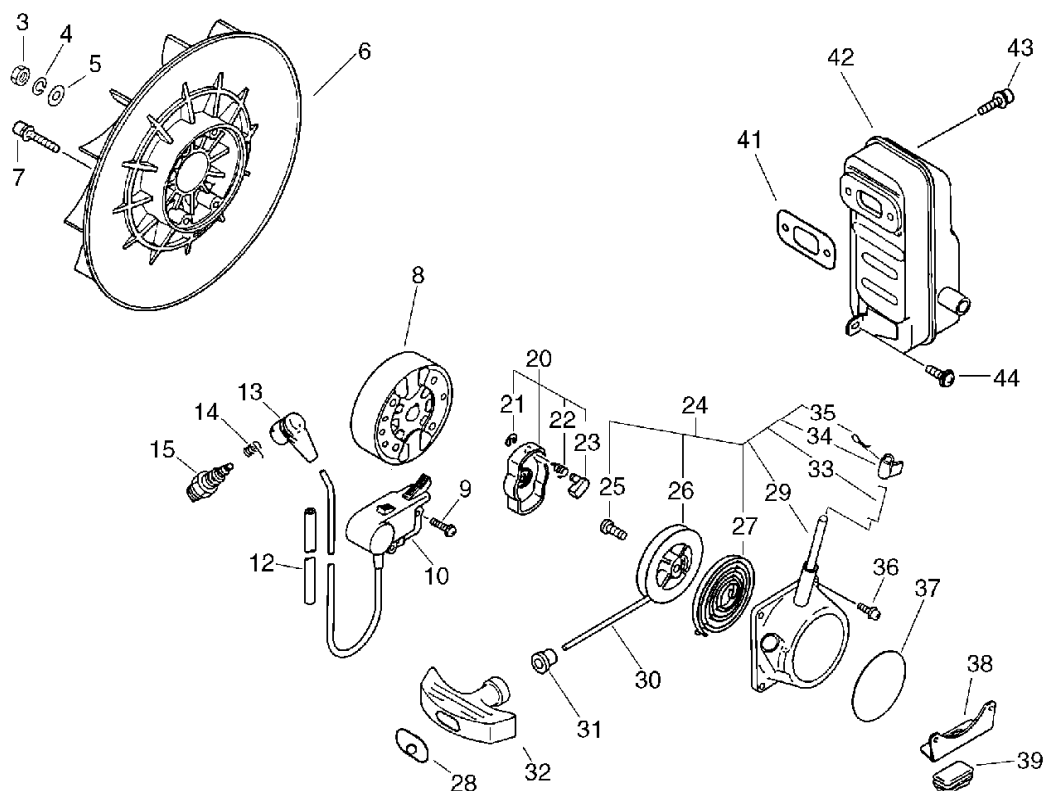
No.1



KEY	LV	PART NUMBER	Q'TY	DESCRIPTION	REMARKS	NOTE1	NOTE2
28		900292-05025	6	SCREW 5*25	5*25 SUS		
30		100100-06210	1	CRANKSHAFT ASSY			
33		900323-03014	1	KEY WOODRUFF	3*14		
34		104016-06410	1	COVER, ENGINE			
35		900292-05020	3	SCREW 5*20	5*20 SUS		
38		101100-06810	1	RELEASE ASSY, COMP.			
40	+	101112-52030	1	GASKET, V.SEAT			
43	+	900620-00004	1	WASHER 4	4 SUS		
44	+	900703-00003	1	E-RING 3	CE-3 SUS		

## 2. Starter, Magneto, Muffler

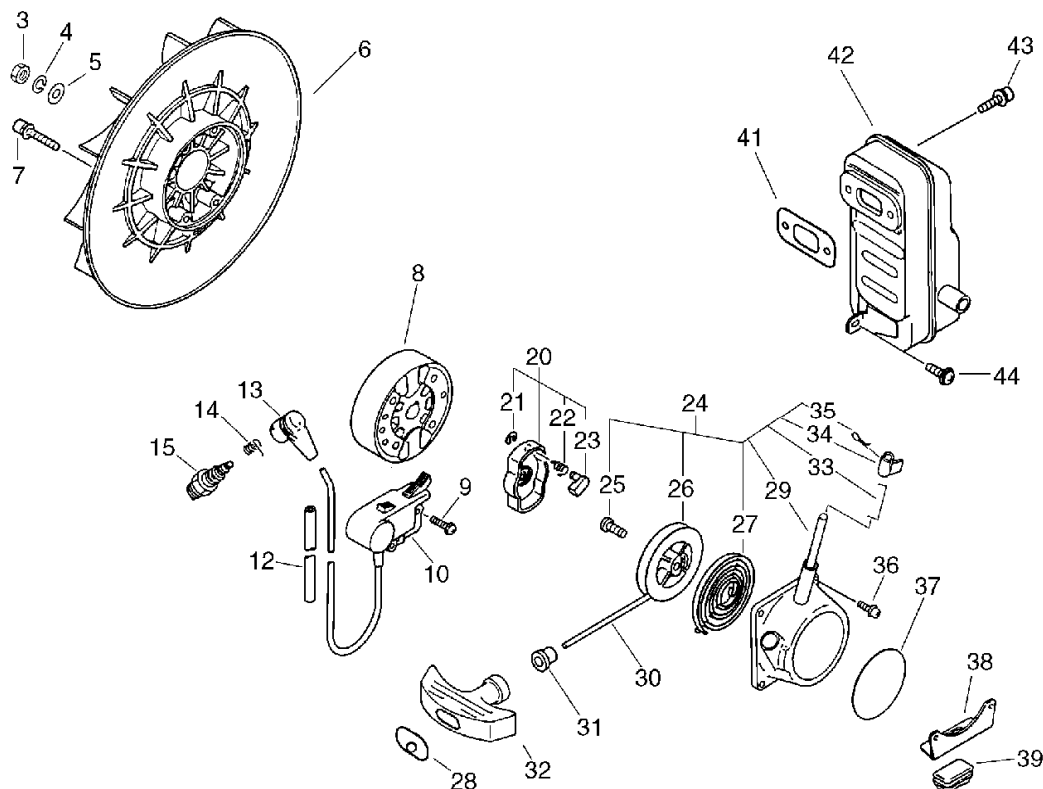
### No.2



KEY	LV	PART NUMBER	Q'TY	DESCRIPTION	REMARKS	NOTE1	NOTE2
3		900501-00010	1	NUT 10*1.25	10*P1.25		
4		900605-00010	1	WASHER, SPRING 10	10		
5		900602-00010	1	WASHER 10(10.5*21*2)	10.5*21*2		
6		200005-06210	1	FAN			
7		900148-05035	4	BOLT 5*35	5*35		
8		156800-06161	1	ROTOR, MAGNETO			
9		900242-05018	2	SCREW 5*18	5*18	Sus. by 900292-05018	
9		900292-05018	2	SCREW 5*18	5*18 SUS		
10		156601-06211	1	C.D. IGNITION MODULE			
12		156611-04260	1	TUBE	6*8*340		
13		159012-03433	1	CAP, SPARK PLUG			
14		159011-03432	1	COIL, SPARK PLUG			
15		159010-19630	1	PLUG, SPARK (BPM-7Y)	BPM-7Y		
20		177202-06210	1	PAWL ASSY, STARTER			
21	+	900700-00004	1	E-RING 4	CE-4		
22	+	177234-40630	1	SPRING, RETURN			
23	+	177218-40630	1	PAWL, STARTER	WHITE		
24		177200-06910	1	STARTER ASSY			
25	+	177236-06910	1	SCREW			
26	+	177215-06910	1	DRUM, STARTER			
27	+	177220-11120	1	REWIND SPRING			
28	+	177246-11120	1	CLIP, STARTER ROPE			
29	+	177279-06910	1	SHAFT, STARTER			
30	+	177226-11120	1	ROPE, STARTER	3.8*1400		
31	+	177227-42030	1	GUIDE, ROPE			

## 2. Starter, Magneto, Muffler

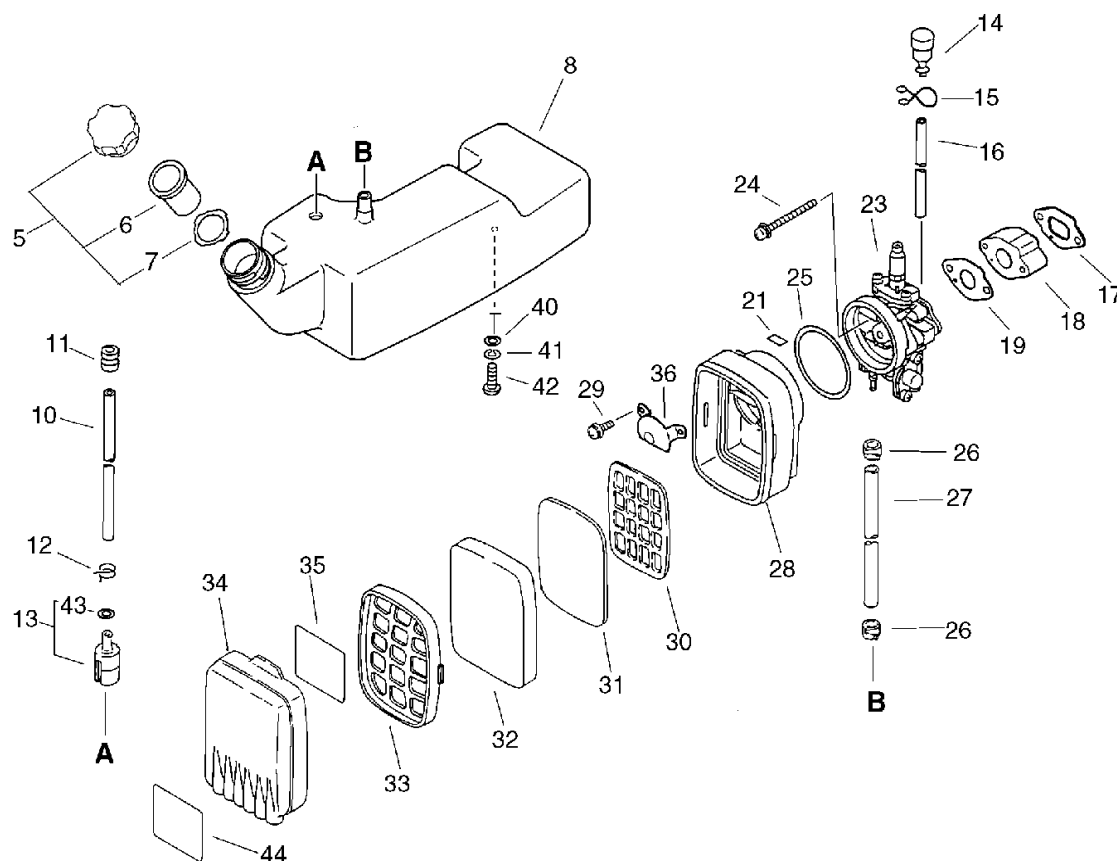
No.2



KEY	LV	PART NUMBER	Q'TY	DESCRIPTION	REMARKS	NOTE1	NOTE2
32	+	177228-11120	1	GRIP, STARTER			
33	+	177234-06910	1	SPRING, RETURN			
34	+	177280-06910	1	PLATE, CAM			
35	+	900300-12015	1	PIN, SPLIT 1.2*15	1.2*15	Sus. by P022-005100	
35	+	P022-005100	1	PIN,SPLIT			
36		900292-04018	4	SCREW 4*18	4*18 SUS		
37		890053-56330	1	LABEL,KIORITZ 56.5MM	56.5		
38		300029-06210	1	PLATE, ANGLE			
39		305117-03360	1	CUSHION			
41		145510-06210	1	GASKET, MUFFLER		Sus. by 145510-06211	
41		145510-06211	1	GASKET, MUFFLER			
42		145610-06210	1	MUFFLER		Sus. by 145610-06212	
42		145610-06211	1	MUFFLER		Sus. by 145610-06212	
42		145610-06212	1	MUFFLER			
43		900105-06020	2	BOLT, H.S. 6*20	6*20		
44		900242-05014	1	SCREW 5*14	5*14	Sus. by 900292-05014	
44		900292-05014	1	SCREW 5*14	5*14 SUS		

### 3. Air Cleaner, Fuel Tank

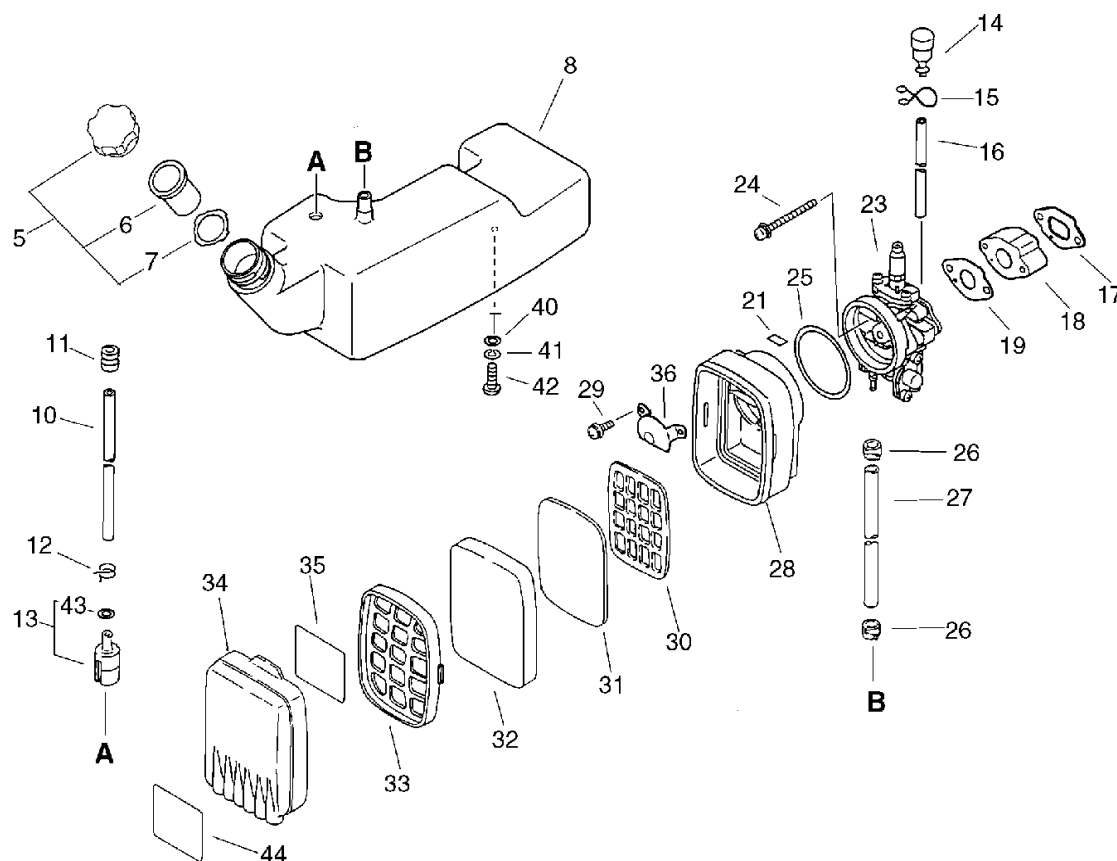
No.3



KEY	LV	PART NUMBER	Q'TY	DESCRIPTION	REMARKS	NOTE1	NOTE2
5		131004-06210	1	CAP ASSY, FUEL			
6	+	131003-05330	1	CUP SET, VENT			
7	+	131016-21060	1	GASKET, FUEL CAP			
8		131005-06210	1	TANK, FUEL		Sus. by 131005-06213	
8		131005-06211	1	TANK, FUEL		Sus. by 131005-06213	
8		131005-06212	1	TANK, FUEL		Sus. by 131005-06213	
8		131005-06213	1	TANK, FUEL			
10		132010-35430	1	PIPE 3*6*230	3*6*230		
11		132115-12330	1	GROMMET			
12		132013-26630	1	CLIP	6.5MM		
13		131205-05630	1	STRAINER, FUEL			
43	+	900603-00005	1	WASHER 5	5.5*12*0.8		
14		132001-05510	1	VALVE, CHECK			
15		132013-05060	1	CLIP, PIPE			
16		132010-06530	1	PIPE 3*6* 85	3*6* 85		
17		130016-06410	1	GASKET, INTAKE			
18		130017-06410	1	INSULATOR			
19		130016-06110	1	GASKET, INTAKE			
21		890026-00310	1	LABEL, CHOKE		Sus. by 890026-00311	
21		890026-00311	1	LABEL, CHOK			
23		124200-07310	1	CARBURETOR ASSY	K13PR-6L		

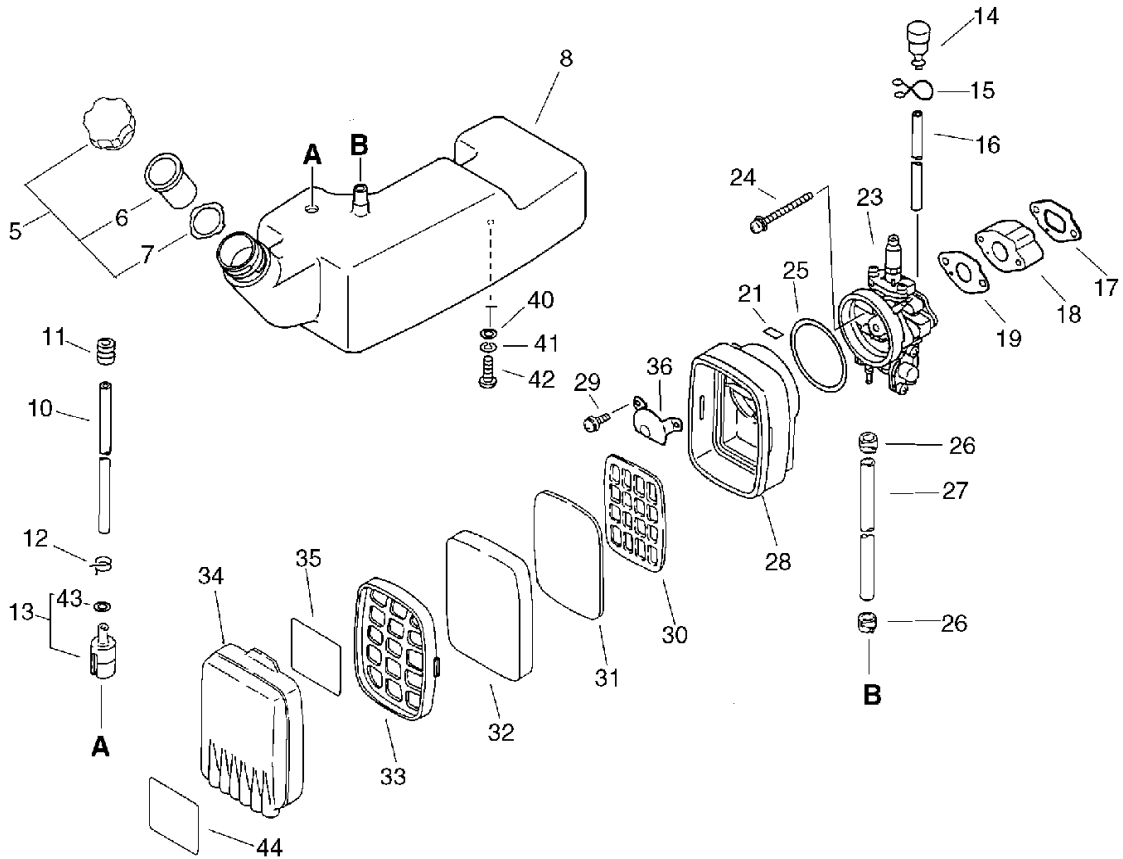
### 3. Air Cleaner, Fuel Tank

No.3



KEY	LV	PART NUMBER	Q'TY	DESCRIPTION	REMARKS	NOTE1	NOTE2
24		900242-05055	2	SCREW 5*55 (W/W.SW)	5*55	Sus. by 91368-05055	
24		91368-05055	2	SCREW	SM-5*55 SUS		
25		130320-05810	1	SEAL, CLEANER			
26		357013-00210	2	CLIP 11	11≧J	Sus. by 132013-14010	
26		132013-14010	2	BAND	10.5MM		
27		132010-06210	1	PIPE 7*11*70	7*11*70	Sus. by 132010-06410	
27		132010-06410	1	PIPE	5/16*7/16*75YL		
28		130307-03711	1	CASE, AIR CLEANER			
29		900242-04014	2	SCREW 4*14	4*14		
30		130319-03710	1	GRID, AIR CLEANER			
31		130317-03710	1	FILTER, AIR			
32		130310-02910	1	FILTER, AIR			
33		130311-03710	1	GRID, AIR CLEANER			
34		130313-03710	1	COVER, AIR CLEANER			
35		890187-03710	1	LABEL, CLEANER			
36		129011-05110	1	PLATE			
40		145642-00760	2	WASHER 6.5*18*1.6	6.5*18*1.6		
41		900605-00006	2	WASHER, SPRING 6	6		
42		900220-06014	2	SCREW +-SR 6*14	6*14	Sus. by 900226-06015	
42		900226-06015	2	SCREW, 6*15	6*15 SUS		

**3. Air Cleaner, Fuel Tank**  
**No.3**



KEY	LV	PART NUMBER	Q'TY	DESCRIPTION	REMARKS	NOTE1	NOTE2
-----	----	-------------	------	-------------	---------	-------	-------

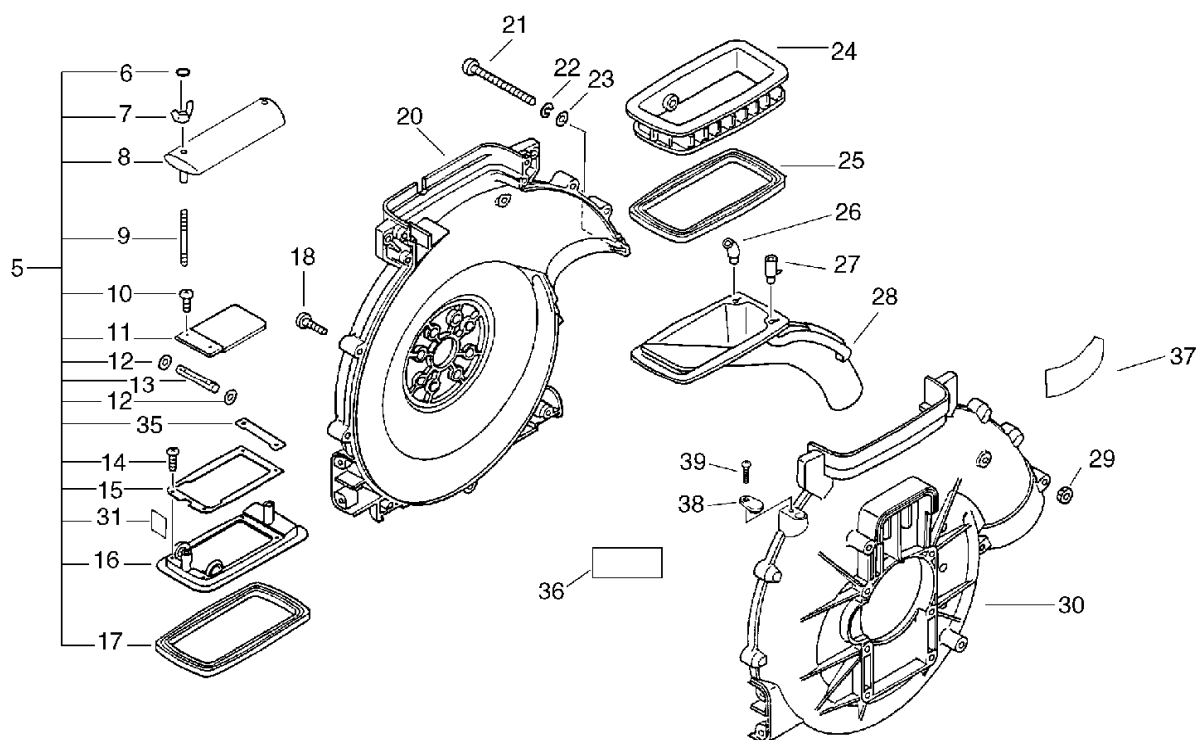
44		890016-07310	1	LABEL, CAUTION			
44		X505-000860	1	LABEL, CAUTION			

Sus. by X505-000860



## 4. Fan Case, Lower Tank

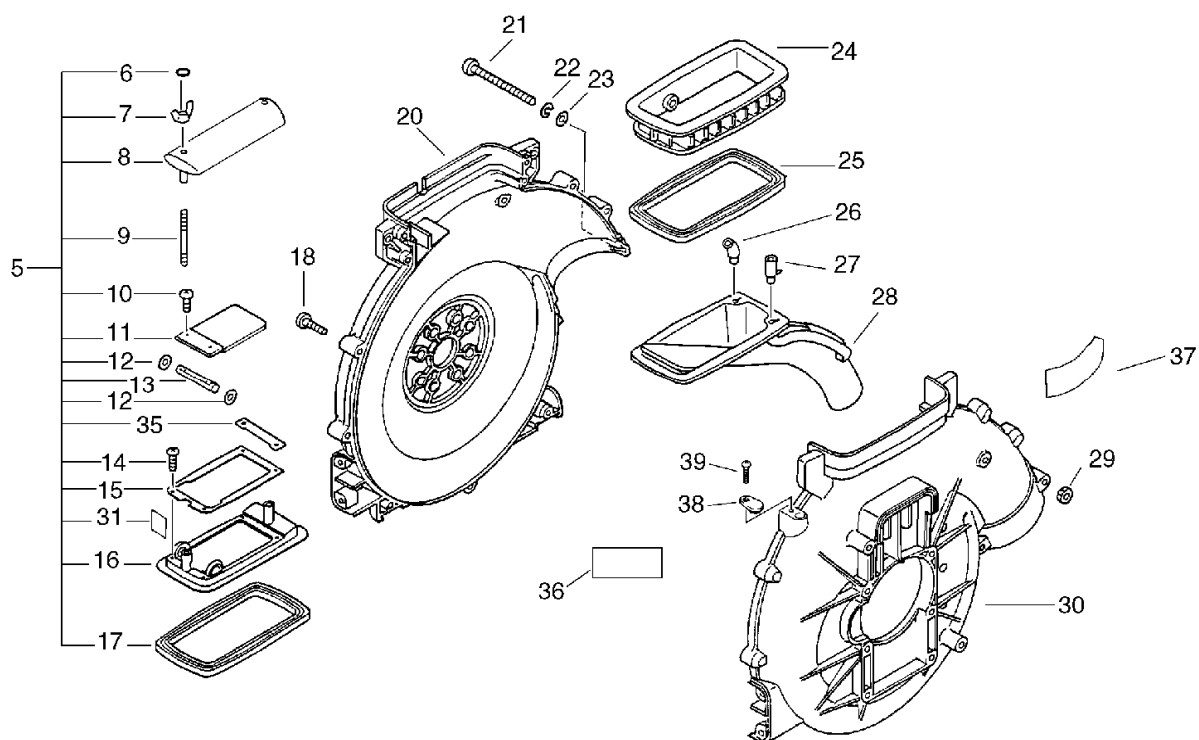
No.4



KEY	LV	PART NUMBER	Q'TY	DESCRIPTION	REMARKS	NOTE1	NOTE2
5		275100-06212	1	SHUTTER ASSY			
6	+	900720-00004	1	O-RING (P-4)	P-4		
7	+	900539-00005	1	NUT, WING 5	5		
8	+	250110-06212	1	STABILIZER			
9	+	270015-06211	1	BOLT, STUD	5*50		
10	+	900226-04010	2	SCREW, 4*10	4*10 SUS		
11	+	270145-06210	1	SHUTTER			
12	+	275123-05510	2	SPACER 10*19.5*0.3	10*19.5*0.3		
13	+	270153-06210	1	SHAFT, SHUTTER			
14	+	900295-04014	4	SCREW 4*14	4*14 SUS		
15	+	270110-06210	1	SHUTTER			
16	+	270112-06211	1	SHUTTER, METERING			
17	+	270119-06210	1	GASKET, SHUTTER			
31	+	210035-06310	1	PACKING, DUST			
35	+	270122-06211	1	PLATE, EYE			
18		900286-05025	11	SCREW 5*25 SUS	5*25 SUS		
20		200105-07310	1	CASE, FAN		Sus. by 200105-07311	
20		200105-07311	1	CASE, FAN			
21		210425-04110	2	BOLT			
22		900609-00005	2	WASHER, SPRING 5 SUS	5 SUS		
23		900604-00005	2	WASHER 5 SUS	5 SUS		
24		270010-06211	1	TANK, LOWER			
25		270018-06210	1	PACKING			
26		370321-06210	1	PLATE		Sr/Nr 020028 and before	

## 4. Fan Case, Lower Tank

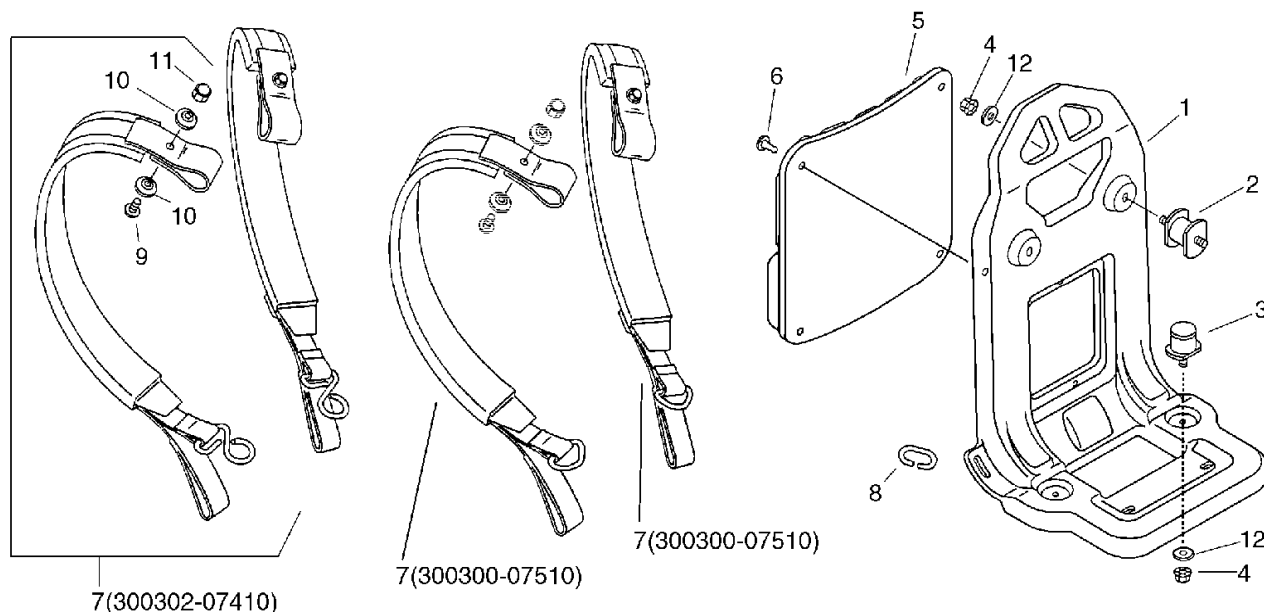
No.4



KEY	LV	PART NUMBER	Q'TY	DESCRIPTION	REMARKS	NOTE1	NOTE2
27		370316-06210	1	GUIDE, AIR		Sr/Nr 020028 and before	
28		370301-06210	1	PIPE, DUST OUTLET		Sus. by 370613-07531	
28		370301-06211	1	PIPE, DUST OUTLET		Sus. by 370613-07531	
28		370613-07531	1	PIPE, DUST OUTLET			
29		900504-00005	2	NUT 5B	5B		
30		200107-07310	1	CASE, FAN		Sus. by 200107-07311	
30		200107-07311	1	CASE, FAN			
36		890035-48631	1	LABEL			
37		890098-06210	1	LABEL, CAUTION		Sus. by 890098-06211	
37		890098-06211	1	LABEL, CAUTION			
38		363029-03210	1	PLUG			
39		900286-05016	1	SCREW 5*16 SUS	5*16 SUS		

## 5. Harness

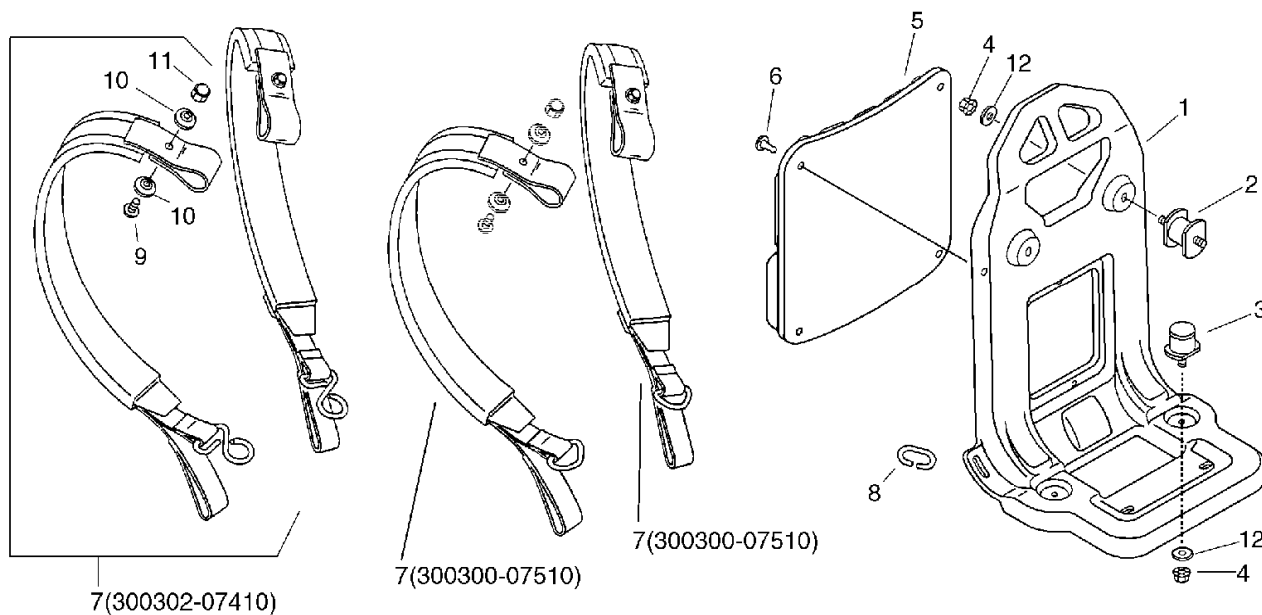
No.5



KEY	LV	PART NUMBER	Q'TY	DESCRIPTION	REMARKS	NOTE1	NOTE2
1		300010-07310	1	FRAME, BACKPACK		Sus. by 300010-07311	
1		300010-07311	1	FRAME, BACKPACK			
2		200910-06210	2	CUSHION		Sus. by 200910-07610	
2		200910-07610	2	CUSHION			
3		200916-03210	2	CUSHION		Sus. by 200916-07610	
3		200916-07610	2	CUSHION			
4		250916-06210	4	NUT		Sus. by set of 900509-00006 and 145642-00760	
4		92136-06000	4	NUT FLANGE	M6	Sus. by set of 900509-00006 and 145642-00760	
4		900509-00006	4	NUT 6 SUS	6 SUS		
5		300111-14010	1	CUSHION, KNAPSACK			
6		300333-06160	4	CLIP			
7		300302-07410	2	HARNESS, W/PAD		Sr/Nr 017008 and before	
9	+	900216-05016	2	SCREW, 5*16	5*16		
10	+	300328-03210	4	WASHER, HARNESS			
11	+	900560-00005	2	NUT, LOCK 5	5		

# 5. Harness

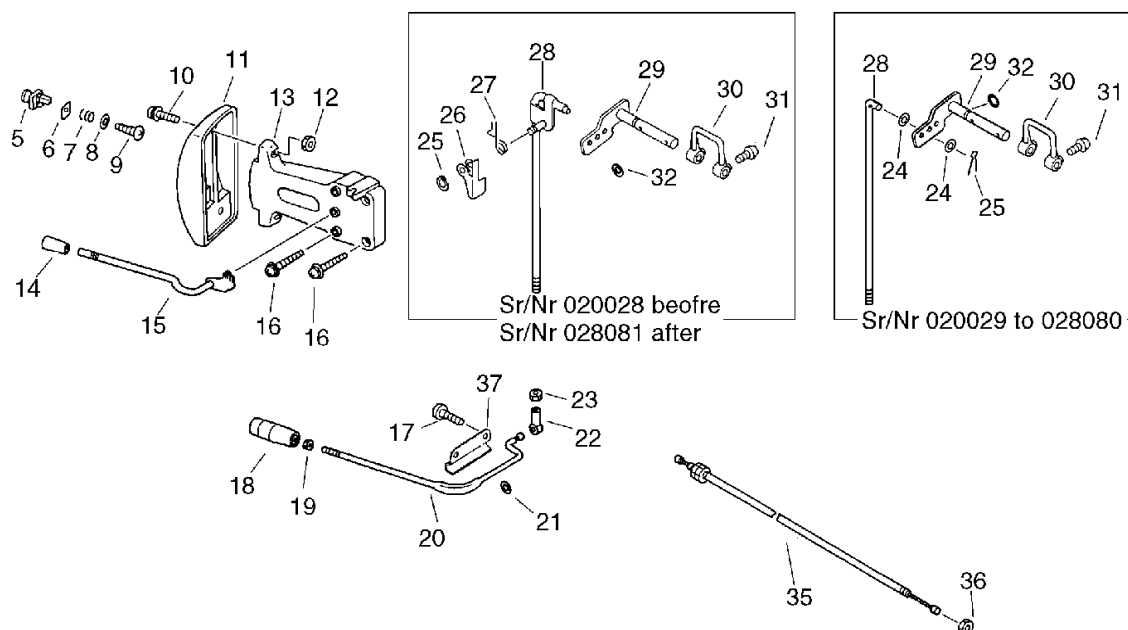
No.5



KEY	LV	PART NUMBER	Q'TY	DESCRIPTION	REMARKS	NOTE1	NOTE2
7		300300-07510	2	HARNESS, KNAPSACK		Sr/Nr 017009 and after	
8		300318-07710	2	RING		Sr/Nr 017009 and after	
12		145642-00760	4	WASHER 6.5*18*1.6	6.5*18*1.6		

## 6. Control Lever

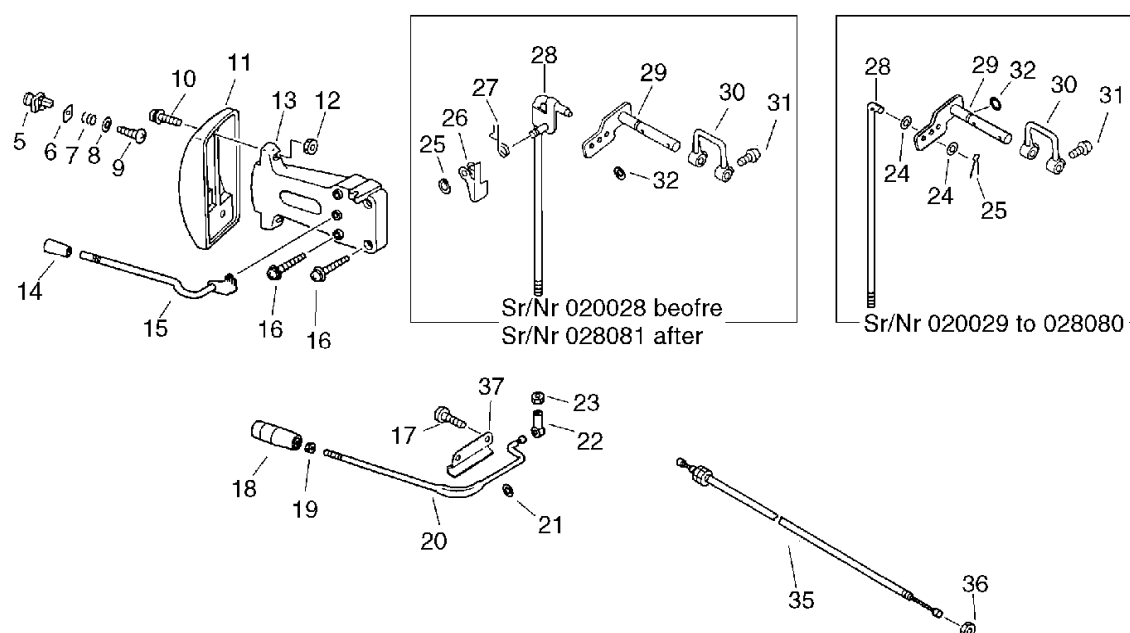
No.6



KEY	LV	PART NUMBER	Q'TY	DESCRIPTION	REMARKS	NOTE1	NOTE2
5		701027-06210	1	STOPPER, DIAL		Sus. by 701027-06212	
5		701027-06211	1	STOPPER, DIAL		Sus. by 701027-06212	
5		701027-06212	1	STOPPER, DIAL			
6		701114-06210	1	PLATE, EYE			
7		701016-06210	1	SPRING			
8		701017-06210	1	WASHER			
9		900296-04012	1	SCREW 4*12	4*12 SUS		
10		900292-05025	2	SCREW 5*25	5*25 SUS		
11		701111-06210	1	DIAL		Sus. by 701111-06212	
11		701111-06211	1	DIAL		Sus. by 701111-06212	
11		701111-06212	1	DIAL			
12		900504-00005	2	NUT 5B	5B		
13		701112-06210	1	BRACKET, DIAL			
14		701021-02910	1	KNOB, LEVER			
15		178005-06410	1	LEVER, THROTTLE		Sus. by 178005-07711	
15		178005-07710	1	LEVER, THROTTLE		Sus. by 178005-07711	
15		178005-07711	1	LEVER, THROTTLE			
16		900286-05025	4	SCREW 5*25 SUS	5*25 SUS		
17		900292-05014	2	SCREW 5*14	5*14 SUS		
18		701007-06610	1	KNOB, LEVER			

## 6. Control Lever

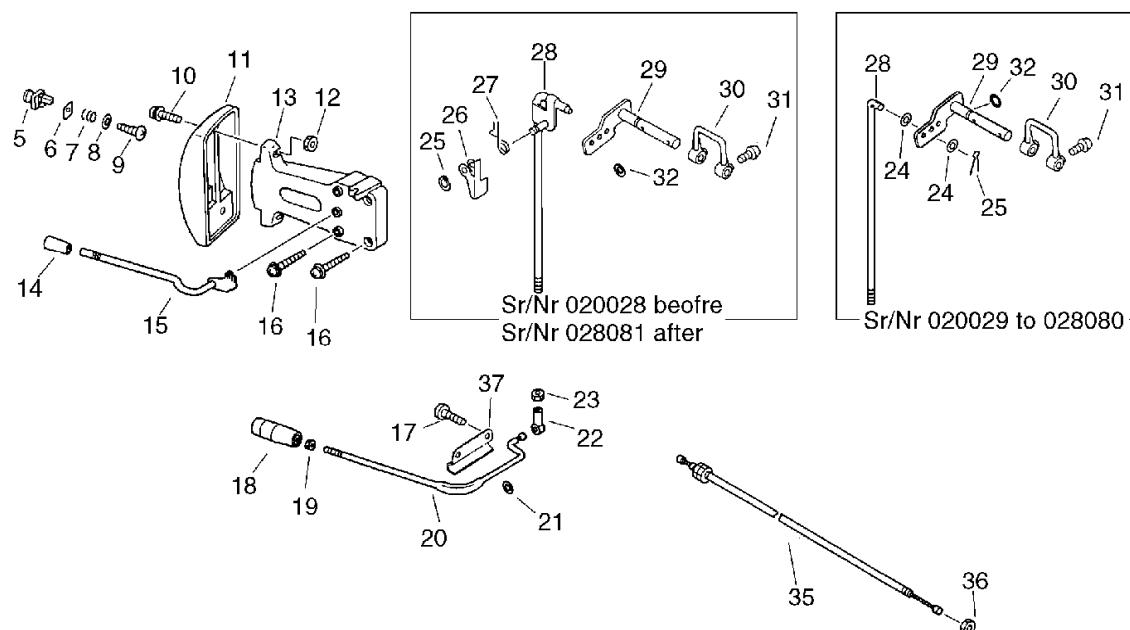
No.6



KEY	LV	PART NUMBER	Q'TY	DESCRIPTION	REMARKS	NOTE1	NOTE2
19		900502-00006	1	NUT 6 (3N)	3N6		
20		701010-06610	1	LEVER, CONTROL		Sus. by 701010-07710	
20		701010-07710	1	LEVER, METERING			
21		900600-00008	1	WASHER 8	8		
22		701020-05510	1	CONNECTOR			
23		900500-00005	1	NUT 5	5		
24		900604-00006	2	WASHER 6(SUS)	6 SUS	Sr/Nr 020029 to 028080	
25		900703-00003	1	E-RING 3	CE-3 SUS	Sr/Nr 020028 and before	
25		605612-06510	1	PIN, SNAP		Sr/Nr 020029 to 028080	
25		900703-00003	1	E-RING 3	CE-3 SUS	Sr/Nr 028081 and after	
26		701038-07210	1	PLATE, ANGLE		Sr/Nr 020028 and before	
26		701038-07210	1	PLATE, ANGLE		Sr/Nr 028081 and after	
27		701039-07210	1	SPRING		Sr/Nr 020028 and before	
27		701039-07210	1	SPRING		Sr/Nr 028081 and after	
28		701014-07610	1	ROD, SHUTTER		Sr/Nr 020028 and before	

## 6. Control Lever

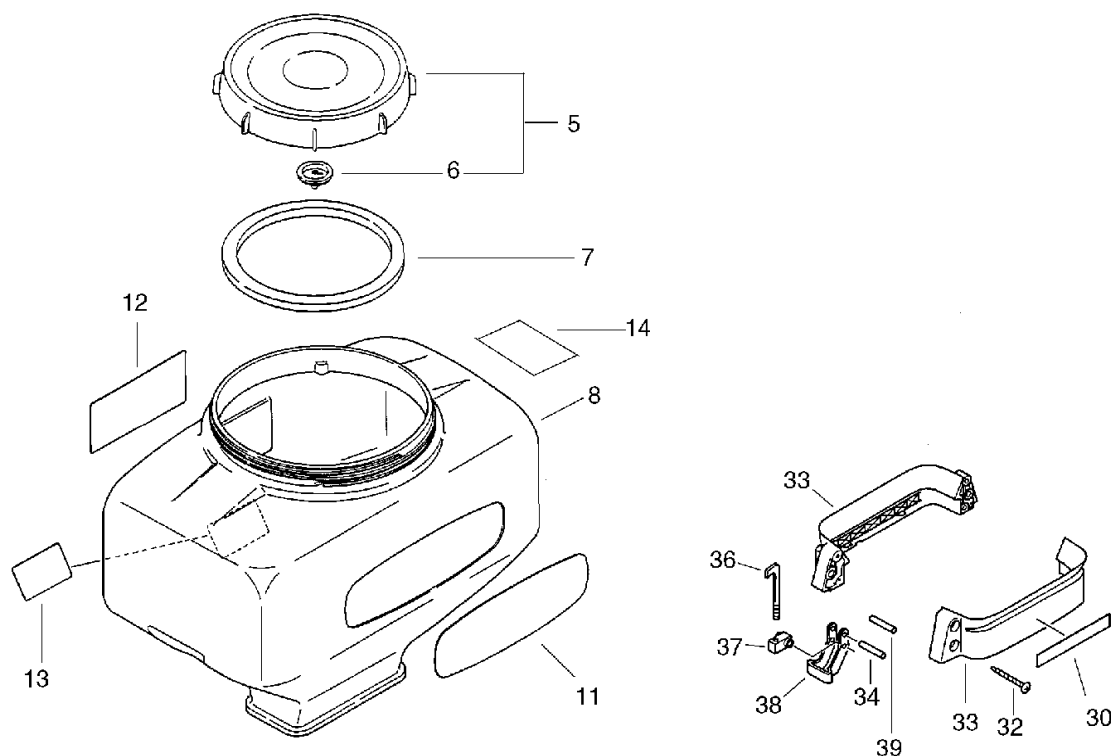
No.6



KEY	LV	PART NUMBER	Q'TY	DESCRIPTION	REMARKS	NOTE1	NOTE2
28		701026-07510	1	ROD, METERING		Sr/Nr 020029 to 028080	
28		701014-07610	1	ROD, SHUTTER		Sr/Nr 028081 and after	
29		270205-07311	1	SHAFT, SHUTTER			
30		270216-06210	1	ARM			
31		900292-04014	2	SCREW 4*14	4*14 SUS		
32		900720-00007	1	O-RING 7	P-7		
35		178001-05810	1	WIRE, THROTTLE			
36		900503-00006	1	NUT (3N 6*0.75)	3N 6*0.75		
37		701028-06210	1	HOLDER, STOPPER			

## 7. Chemical Tank

No.7

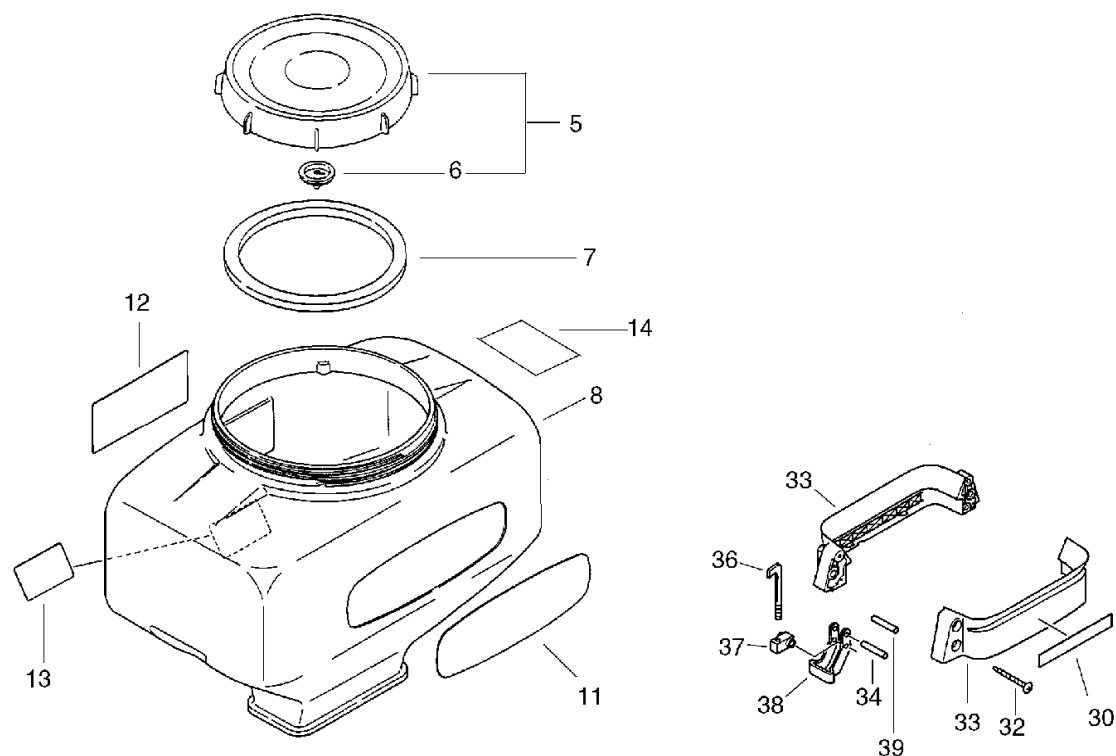


KEY	LV	PART NUMBER	Q'TY	DESCRIPTION	REMARKS	NOTE1	NOTE2
5		250001-05510	1	CAP, CHEMICAL TANK			
6	+	250013-00310	1	CAP, INSIDE			
7		250011-02011	1	PACKING			
8		250017-06210	1	TANK, CHEMICAL (26L)		Sus. by 250017-06212	
8		250017-06211	1	TANK, CHEMICAL (26L)		Sus. by 250017-06212	
8		250017-06212	1	TANK, CHEMICAL	26L		
11		890012-10510	1	LABEL, KIORITZ		Sus. by 890012-10510	
11		890012-07510	1	LABEL, KIORITZ		Sus. by 890012-10510	
11		890012-10510	1	LABEL, KIORITZ			
12		890081-07310	1	LABEL, CAUTION			
13		890016-07010	1	LABEL, CAUTION		Sus. by 890016-07011	
13		890016-07011	1	LABEL, CAUTION			
14		890016-06210	1	LABEL, CAUTION		Sus. by 890016-06213	
14		890016-06211	1	LABEL, CAUTION		Sus. by 890016-06213	
14		890016-06212	1	LABEL, CAUTION		Sus. by 890016-06213	
14		890016-06213	1	LABEL, CAUTION			
30		890115-07310	1	LABEL, MODEL		Sus. by 890115-07311	



## 7. Chemical Tank

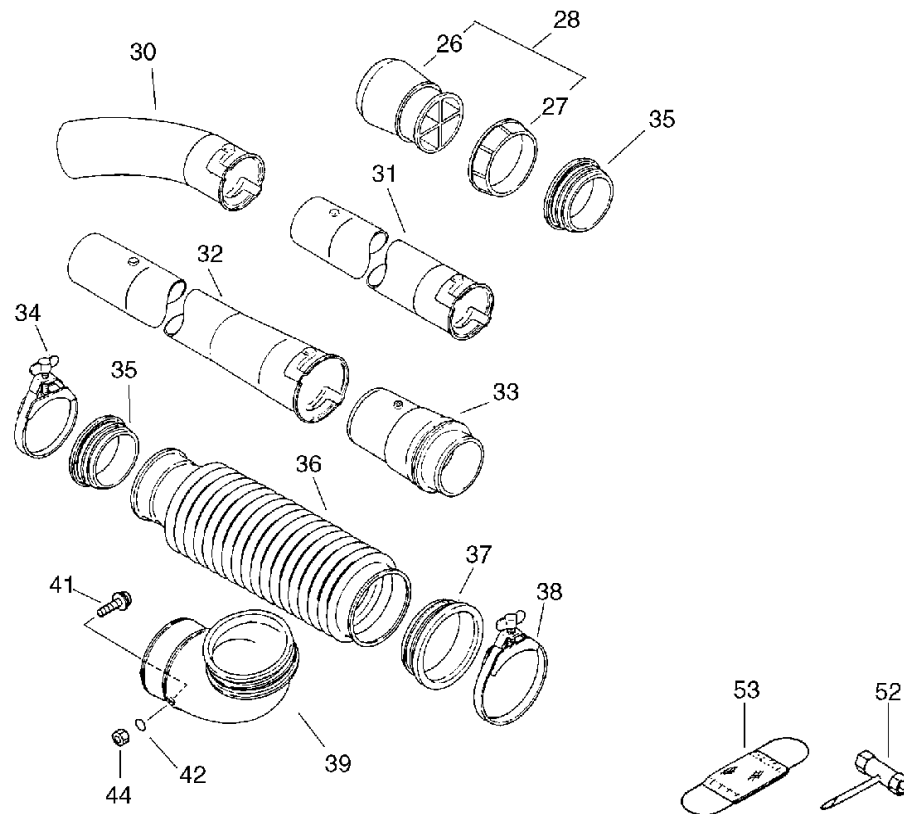
No.7



KEY	LV	PART NUMBER	Q'TY	DESCRIPTION	REMARKS	NOTE1	NOTE2
30		890115-07311	1	LABEL, MODEL			
32		900286-05035	4	SCREW 5*35	5*35 SUS		
33		250910-06210	2	HOLDER, C. TANK			
34		900333-70380	2	PIN, STRAIGHT			
36		250915-06211	2	BOLT, TANK HOLDER			
37		250930-06210	2	CONNECTOR, BRACKET		Sus. by 250930-07510	
37		250930-07510	2	CONNECTOR, BRACKET			
38		250932-06210	2	BRACKET, TANK			
39		250914-03210	2	PIN, TANK HOLDER			

## 8. Dust Blower, Tools

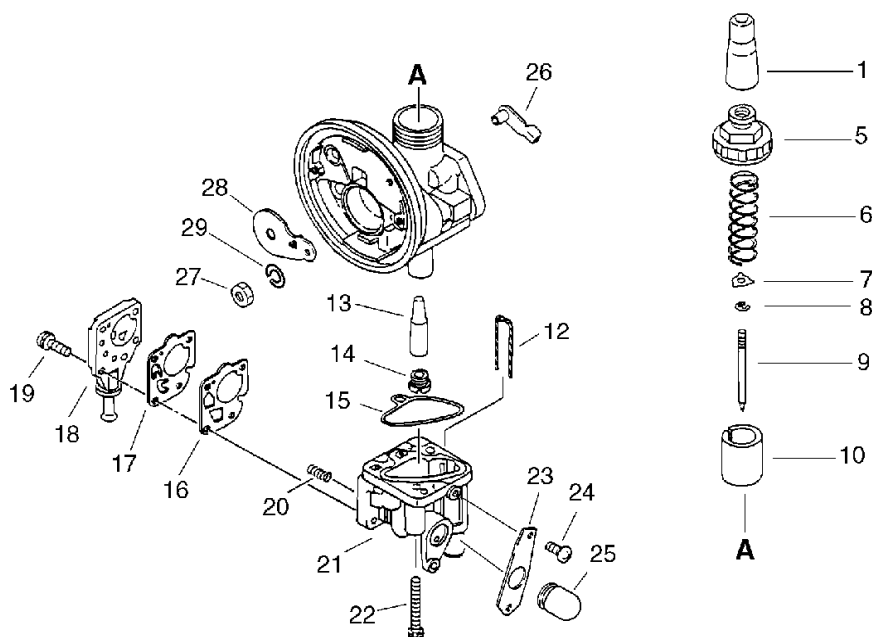
No.8



KEY	LV	PART NUMBER	Q'TY	DESCRIPTION	REMARKS	NOTE1	NOTE2
28		220105-01610	1	CONNECTER KIT			
26	+	220028-01611	1	CONNECTOR			
27	+	220033-01610	1	NUT, HOLLOW			
30		210023-05510	1	PIPE, CURVED			
31		210015-05510	1	PIPE, STRAIGHT			
32		210014-05510	1	PIPE, STRAIGHT			
33		210002-04110	1	PIPE, SWIVEL (BL)		Sus. by 210002-04111	
33		210002-04111	1	PIPE, SWIVEL	BL		
34		210407-01110	1	CLAMP, FLEXIBLE PIPE		Sus. by 210407-07710	
34		210407-07710	1	CLAMP			
35		210032-04110	2	PACKING, FLX. PIPE			
36		210013-04111	1	PIPE, FLEXIBLE			
37		210036-04110	1	GASKET, FLX. PIPE			
38		210407-04110	1	CLAMP, FLEXIBLE PIPE		Sus. by 210407-07610	
38		210407-07610	1	CLAMP			
39		210011-05510	1	ELBOW, BLOWING			
41		900292-05014	1	SCREW 5*14	5*14 SUS		
42		900720-00004	1	O-RING (P-4)	P-4		
44		900504-00005	1	NUT 5B	5B		
52		895410-03930	1	WRENCH, W/S. DRIVER			
53		898544-01111	1	MASK			

# 9. Carburetor

## No.9



KEY	LV	PART NUMBER	Q'TY	DESCRIPTION	REMARKS	NOTE1	NOTE2
		124200-07310	1	CARBURETOR ASSY	K13PR-6L		
1	+	124174-11120	1	CAP			
5	+	124113-05910	1	COVER, TOP			
6	+	124114-11120	1	SPRING, THROTTLE			
7	+	124115-11120	1	SEAT, SPRING			
8	+	124116-05530	1	E-RING			
9	+	124117-06610	1	NEEDLE, JET			
10	+	124118-05910	1	VALVE, THROTTLE			
12	+	124182-05510	1	WIRE, DRAIN			
13	+	124162-05510	1	JET, NEEDLE			
14	+	124122-05510	1	JET, MAIN			
15	+	124123-05510	1	GASKET, CHAMBER			
16	+	124363-21330	1	GASKET, PUMP DIAPH.			
17	+	124364-05510	1	DIAPHRAGM, FUEL PUMP			
18	+	124365-05510	1	COVER, PUMP			
19	+	900241-03010	4	SCREW 3*10 (W/SW)	3*10		
20	+	124367-21330	2	SPRING, COIL			
21	+	124124-05910	1	CHANBER			
22	+	900241-04030	2	SCREW 4*30 (W/SW)	4*30		
23	+	124163-05510	1	PLATE			
24	+	900241-04008	2	SCREW 4*8	4*8		
25	+	124381-05511	1	CAP			
26	+	124142-05810	1	LEVER, CHOKE			
27	+	124111-05810	1	NUT			
28	+	124143-05810	1	PLATE, CHOKE			
29	+	900605-00006	1	WASHER, SPRING 6	6		

**Index**

<b>Patrs Number</b>	<b>Key No.</b>	<b>Patrs Number</b>	<b>Key No.</b>	<b>Patrs Number</b>	<b>Key No.</b>
100000-07310	1 - 11	130317-03710	3 - 31	177279-06910	2 - 29
100011-33730	1 - 12	130319-03710	3 - 30	177280-06910	2 - 34
100012-12331	1 - 31	130320-05810	3 - 25	178001-05810	6 - 35
100013-06210	1 - 13	131003-05330	3 - 6	178005-06410	6 - 15
100015-00120	1 - 14	131004-06210	3 - 5	178005-07710	6 - 15
100100-06210	1 - 30	131005-06210	3 - 8	178005-07711	6 - 15
100204-08261	1 - 18	131005-06211	3 - 8	200005-06210	2 - 6
100213-00310	1 - 24	131005-06212	3 - 8	200105-07310	4 - 20
100215-03930	1 - 19	131005-06213	3 - 8	200105-07311	4 - 20
100242-10721	1 - 22	131016-21060	3 - 7	200107-07310	4 - 30
101010-10722	1 - 10	131205-05630	3 - 13	200107-07311	4 - 30
101011-07310	1 - 6	132001-05510	3 - 14	200910-06210	5 - 2
101100-06810	1 - 38	132010-06210	3 - 27	200910-07610	5 - 2
101112-52030	1 - 40	132010-06410	3 - 27	200916-03210	5 - 3
101514-06210	1 - 3	132010-06530	3 - 16	200916-07610	5 - 3
101514-06410	1 - 8	132010-35430	3 - 10	210002-04110	8 - 33
104016-06410	1 - 34	132013-05060	3 - 15	210002-04111	8 - 33
124111-05810	9 - 27	132013-14010	3 - 26	210011-05510	8 - 39
124113-05910	9 - 5	132013-26630	3 - 12	210013-04111	8 - 36
124114-11120	9 - 6	132115-12330	3 - 11	210014-05510	8 - 32
124115-11120	9 - 7	145510-06210	2 - 41	210015-05510	8 - 31
124116-05530	9 - 8	145510-06211	2 - 41	210023-05510	8 - 30
124117-06610	9 - 9	145512-06210	1 - 4	210032-04110	8 - 35
124118-05910	9 - 10	145512-06211	1 - 4	210035-06310	4 - 31
124122-05510	9 - 14	145610-06210	2 - 42	210036-04110	8 - 37
124123-05510	9 - 15	145610-06211	2 - 42	210407-01110	8 - 34
124124-05910	9 - 21	145610-06212	2 - 42	210407-04110	8 - 38
124142-05810	9 - 26	145642-00760	3 - 40	210407-07610	8 - 38
124143-05810	9 - 28	145642-00760	5 - 12	210407-07710	8 - 34
124162-05510	9 - 13	150112-00310	1 - 27	210425-04110	4 - 21
124163-05510	9 - 23	156601-06211	2 - 10	220028-01611	8 - 26
124174-11120	9 - 1	156611-04260	2 - 12	220033-01610	8 - 27
124182-05510	9 - 12	156800-06161	2 - 8	220105-01610	8 - 28
124200-07310	3 - 23	159010-19630	2 - 15	250001-05510	7 - 5
124200-07310	9 -	159011-03432	2 - 14	250011-02011	7 - 7
124363-21330	9 - 16	159012-03433	2 - 13	250013-00310	7 - 6
124364-05510	9 - 17	159129-08260	1 - 25	250017-06210	7 - 8
124365-05510	9 - 18	177200-06910	2 - 24	250017-06211	7 - 8
124367-21330	9 - 20	177202-06210	2 - 20	250017-06212	7 - 8
124381-05511	9 - 25	177215-06910	2 - 26	250110-06212	4 - 8
129011-05110	3 - 36	177218-40630	2 - 23	250910-06210	7 - 33
130010-06410	1 - 9	177220-11120	2 - 27	250914-03210	7 - 39
130016-06110	3 - 19	177226-11120	2 - 30	250915-06211	7 - 36
130016-06410	3 - 17	177227-42030	2 - 31	250916-06210	5 - 4
130017-06410	3 - 18	177228-11120	2 - 32	250930-06210	7 - 37
130307-03711	3 - 28	177234-06910	2 - 33	250930-07510	7 - 37
130310-02910	3 - 32	177234-40630	2 - 22	250932-06210	7 - 38
130311-03710	3 - 33	177236-06910	2 - 25	270010-06211	4 - 24
130313-03710	3 - 34	177246-11120	2 - 28	270015-06211	4 - 9

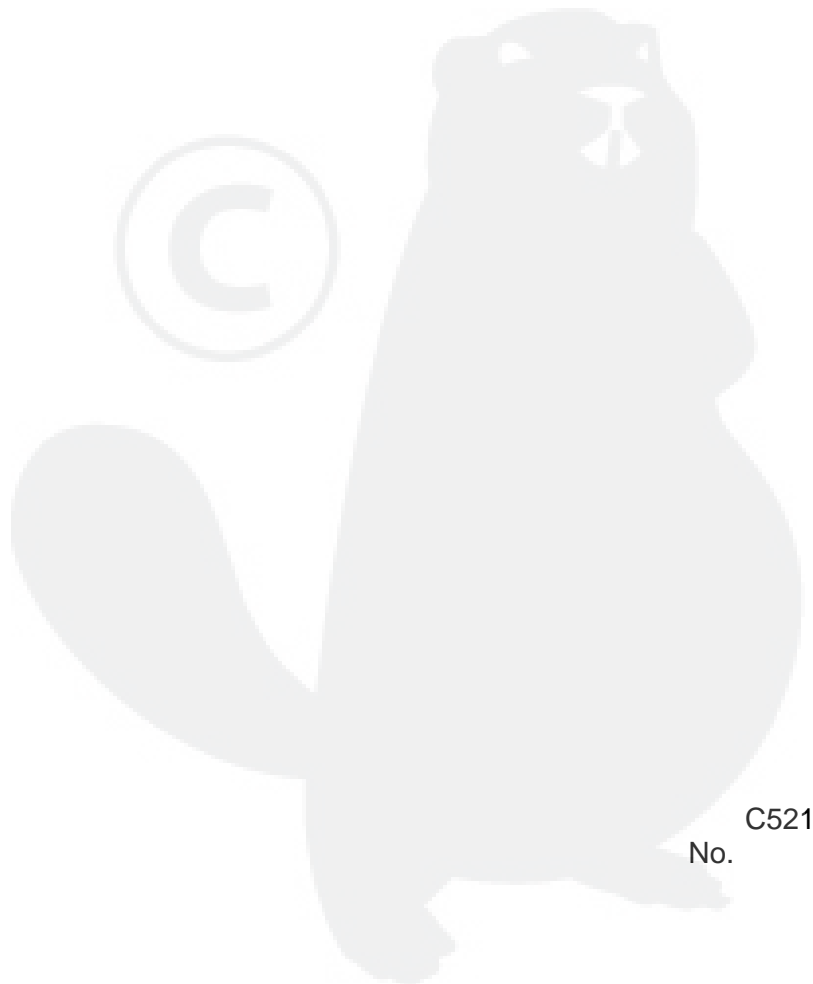
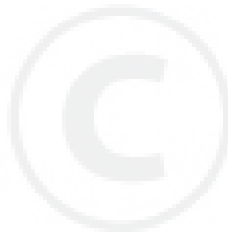
**Index**

<b>Patrs Number</b>	<b>Key No.</b>	<b>Patrs Number</b>	<b>Key No.</b>	<b>Patrs Number</b>	<b>Key No.</b>
270018-06210	4 - 25	701111-06212	6 - 11	900292-05014	6 - 17
270110-06210	4 - 15	701112-06210	6 - 13	900292-05014	8 - 41
270112-06211	4 - 16	701114-06210	6 - 6	900292-05018	1 - 26
270119-06210	4 - 17	890012-07510	7 - 11	900292-05018	2 - 9
270122-06211	4 - 35	890012-10510	7 - 11	900292-05020	1 - 35
270145-06210	4 - 11	890012-10510	7 - 11	900292-05025	1 - 28
270153-06210	4 - 13	890016-06210	7 - 14	900292-05025	6 - 10
270205-07311	6 - 29	890016-06211	7 - 14	900295-04014	4 - 14
270216-06210	6 - 30	890016-06212	7 - 14	900296-04012	6 - 9
275100-06212	4 - 5	890016-06213	7 - 14	900300-12015	2 - 35
275123-05510	4 - 12	890016-07010	7 - 13	900323-03014	1 - 33
300010-07310	5 - 1	890016-07011	7 - 13	900333-70380	7 - 34
300010-07311	5 - 1	890016-07310	3 - 44	900500-00005	6 - 23
300029-06210	2 - 38	890026-00310	3 - 21	900501-00010	2 - 3
300111-14010	5 - 5	890026-00311	3 - 21	900502-00006	6 - 19
300300-07510	5 - 7	890035-48631	4 - 36	900503-00006	6 - 36
300302-07410	5 - 7	890053-56330	2 - 37	900504-00005	4 - 29
300318-07710	5 - 8	890081-07310	7 - 12	900504-00005	6 - 12
300328-03210	5 - 10	890098-06210	4 - 37	900504-00005	8 - 44
300333-06160	5 - 6	890098-06211	4 - 37	900509-00006	5 - 4
305117-03360	2 - 39	890115-07310	7 - 30	900539-00005	4 - 7
357013-00210	3 - 26	890115-07311	7 - 30	900560-00005	5 - 11
363029-03210	4 - 38	890187-03710	3 - 35	900600-00008	6 - 21
370301-06210	4 - 28	895410-03930	8 - 52	900602-00010	2 - 5
370301-06211	4 - 28	898544-01111	8 - 53	900603-00005	3 - 43
370316-06210	4 - 27	900105-06020	2 - 43	900604-00005	4 - 23
370321-06210	4 - 26	900148-05035	2 - 7	900604-00006	6 - 24
370613-07531	4 - 28	900162-05020	1 - 5	900605-00006	3 - 41
605612-06510	6 - 25	900216-05016	5 - 9	900605-00006	9 - 29
701007-06610	6 - 18	900220-06014	3 - 42	900605-00010	2 - 4
701010-06610	6 - 20	900226-04010	4 - 10	900609-00005	4 - 22
701010-07710	6 - 20	900226-06015	3 - 42	900620-00004	1 - 43
701014-07610	6 - 28	900241-03010	9 - 19	900700-00004	2 - 21
701014-07610	6 - 28	900241-04008	9 - 24	900703-00003	1 - 44
701016-06210	6 - 7	900241-04030	9 - 22	900703-00003	6 - 25
701017-06210	6 - 8	900242-04014	3 - 29	900703-00003	6 - 25
701020-05510	6 - 22	900242-05010	1 - 7	900720-00004	4 - 6
701021-02910	6 - 14	900242-05014	2 - 44	900720-00004	8 - 42
701026-07510	6 - 28	900242-05018	1 - 26	900720-00007	6 - 32
701027-06210	6 - 5	900242-05018	2 - 9	900810-36202	1 - 32
701027-06211	6 - 5	900242-05040	1 - 20	91368-05055	3 - 24
701027-06212	6 - 5	900242-05055	3 - 24	92136-06000	5 - 4
701028-06210	6 - 37	900286-05016	4 - 39	P022-005100	2 - 35
701038-07210	6 - 26	900286-05025	4 - 18	X505-000860	3 - 44
701038-07210	6 - 26	900286-05025	6 - 16		
701039-07210	6 - 27	900286-05035	7 - 32		
701039-07210	6 - 27	900292-04014	6 - 31		
701111-06210	6 - 11	900292-04018	2 - 36		
701111-06211	6 - 11	900292-05014	2 - 44		

# YAMABIKO CORPORATION

7-2 SUEHIROCHO 1-CHOME, OHME, TOKYO 198-8760, JAPAN  
PHONE: 81-428-32-6118. FAX: 81-428-32-6145.

**ECHO**®



C521  
No.