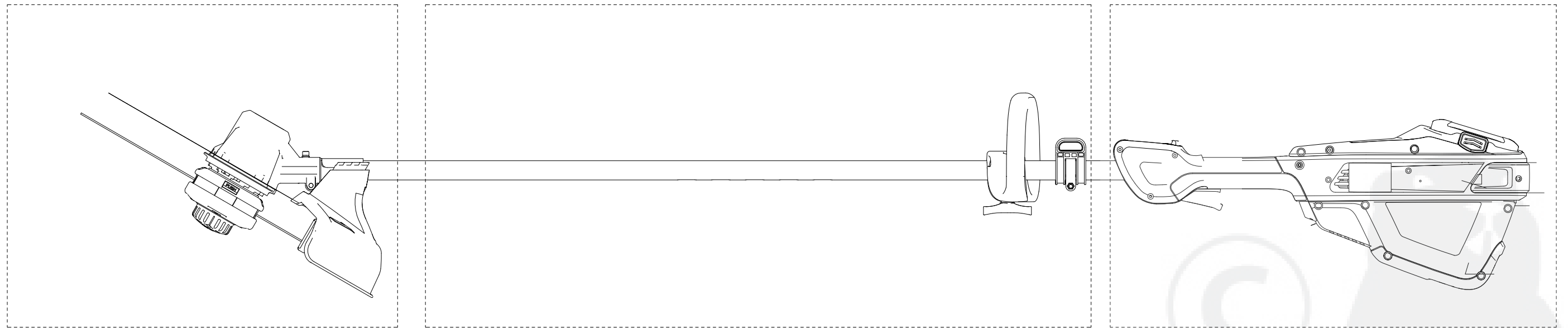


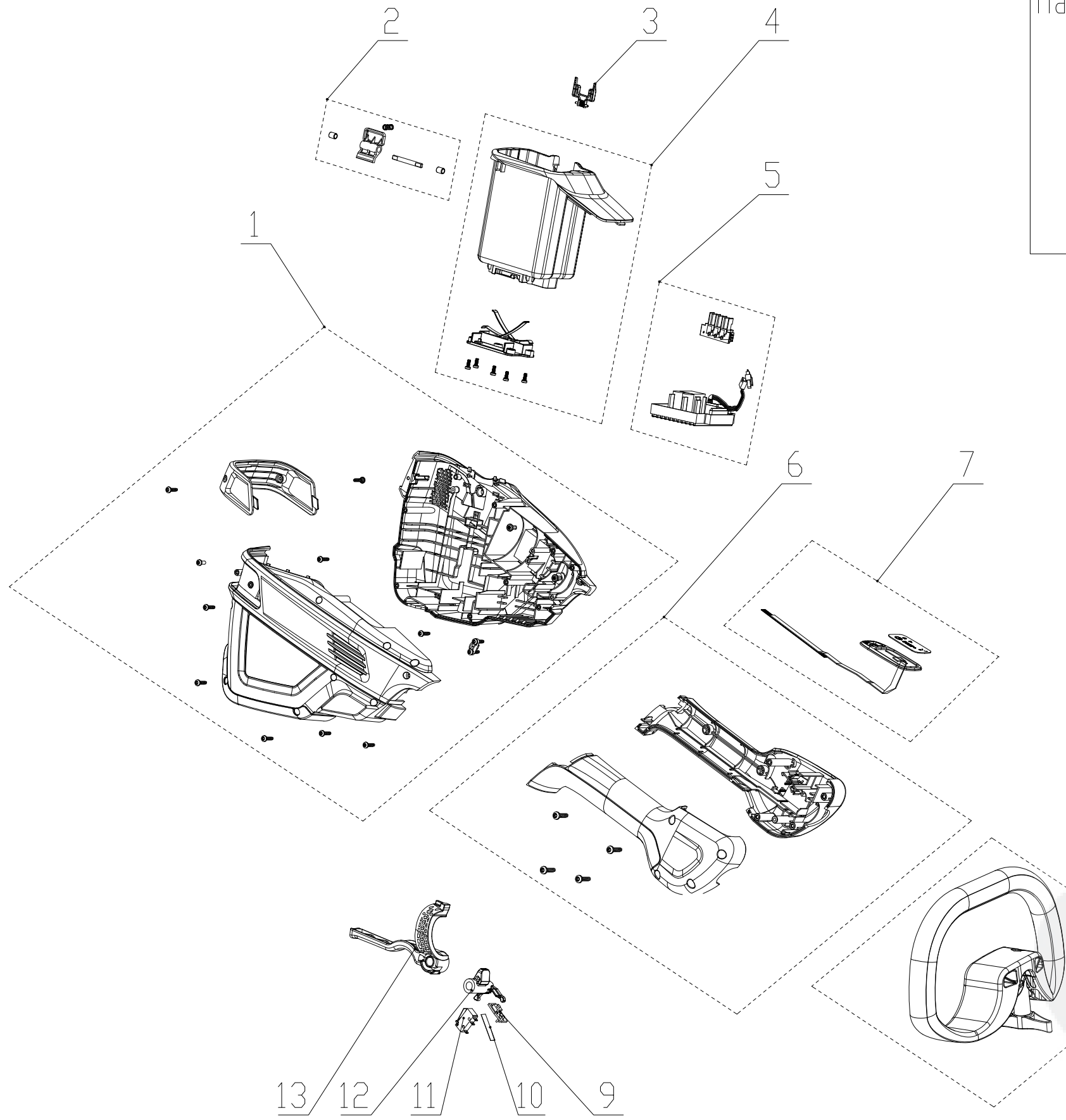
Head

Rod

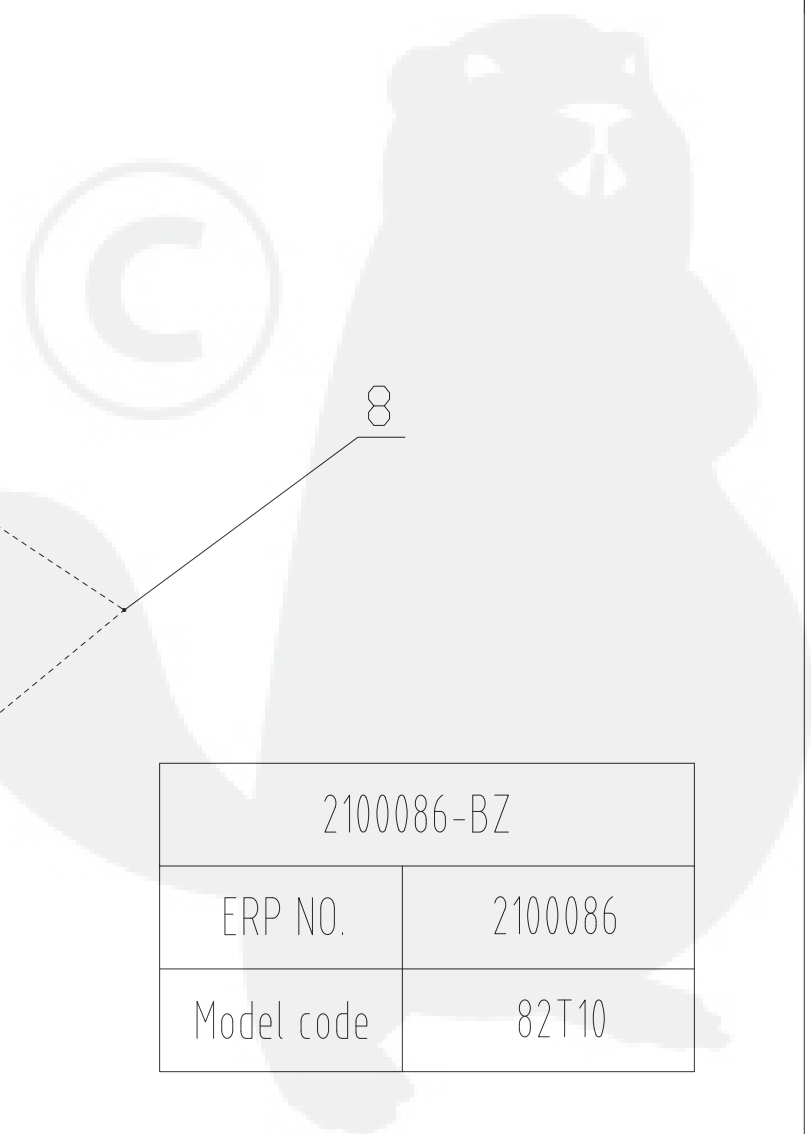
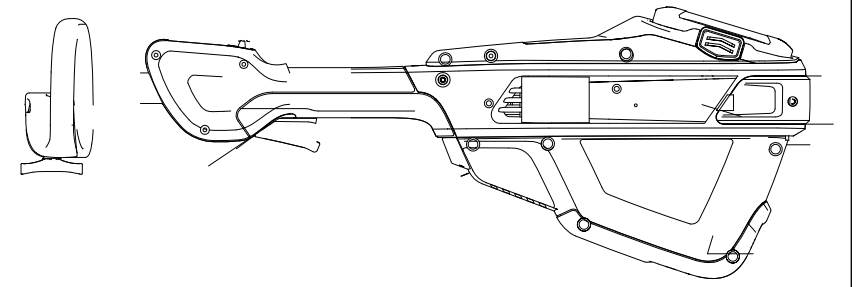
Handle and housing



| | |
|------------|---------|
| 2100086-BZ | |
| ERP NO. | 2100086 |
| Model code | 82T10 |



Handle and housing



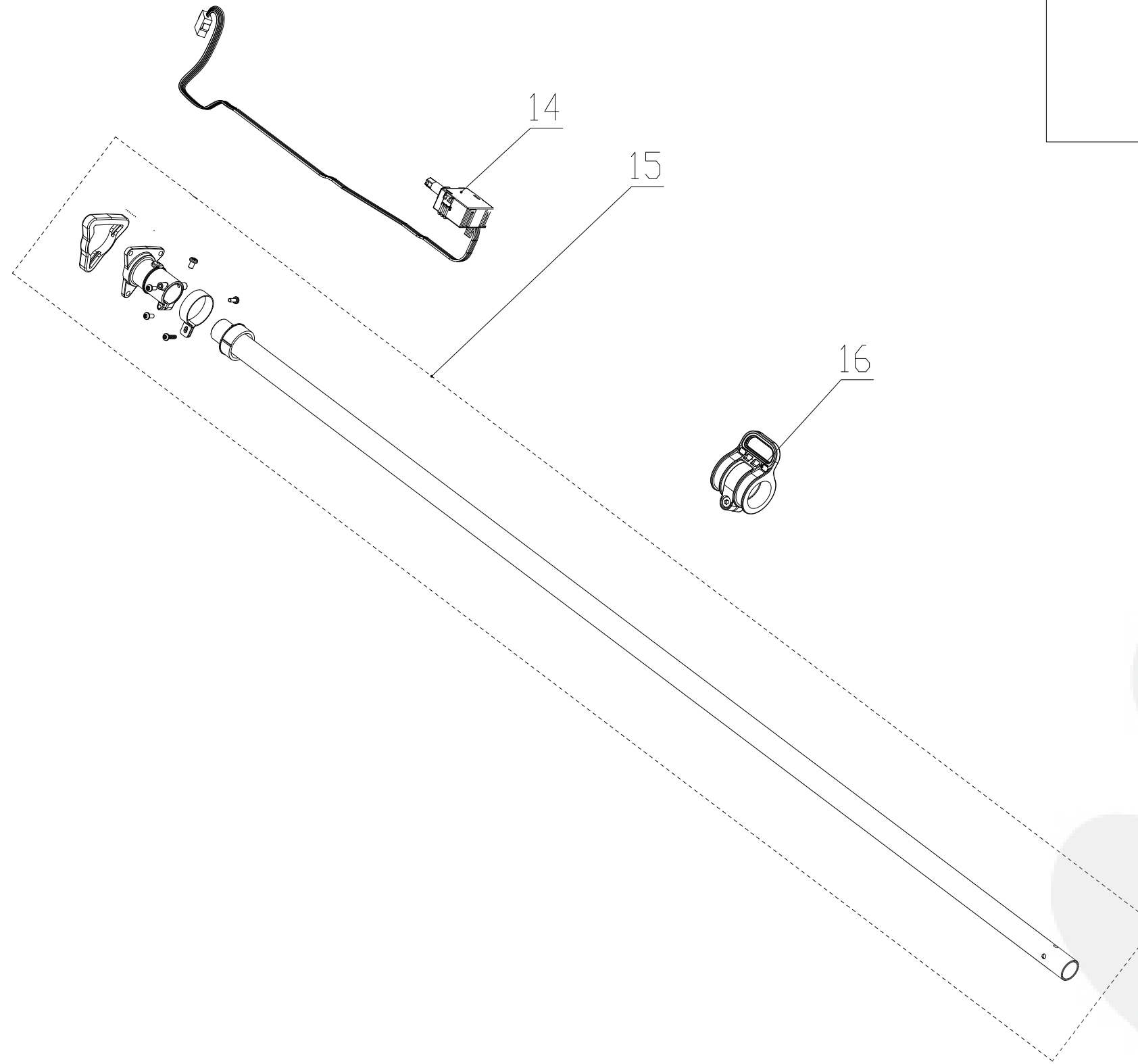
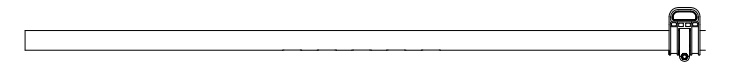
| | |
|------------|---------|
| 2100086-BZ | |
| ERP NO. | 2100086 |
| Model code | 82T10 |

| Ref # | Part # | Description | Qty | Context | Note | Cost | MSRP |
|-------|--------------|------------------------------------|-----|---------|------|------|------|
| 1 | RA341032461D | Housing assembly NEW (2018/12) | 1 | | set | | |
| | | left housing | 1 | | | | |
| | | Right housing | 1 | | | | |
| | | Left decorative cover | 1 | | | | |
| | | Right decorative cover | 1 | | | | |
| | | Rear decorative piece | 1 | | | | |
| | | Screw | 4 | | | | |
| | | Pressing plate | 1 | | | | |
| | | Screw | 12 | | | | |
| | | Screw | 1 | | | | |
| 2 | RA311112461 | Release button | 1 | | set | | |
| | | Release button | 1 | | | | |
| | | Reset spring | 1 | | | | |
| | | Lock shaft sleeve | 2 | | | | |
| | | Release button shaft | 1 | | | | |
| 3 | RA341192461 | Release button press plate | 1 | | set | | |
| 4 | RA311122461 | Battery package barrel | 1 | | set | | |
| | | Battery package barrel | 1 | | | | |
| | | Screw | 5 | | | | |
| | | Battery package Bouncing spring | 2 | | | | |
| | | Inserting plate fixed plate | 1 | | | | |
| 5 | RA362012461A | PCB assembly NEW (2018/12) | 1 | | set | | |
| | | PCB | 1 | | | | |
| | | Inserting seat | 1 | | | | |
| | | Heat shrinkable tube | 1 | | 15cm | | |
| 6 | RA341012461D | Handle assembly | 1 | | set | | |
| | | Left handle | 1 | | | | |
| | | Right handle | 1 | | | | |
| | | Screw ST4×16 | 4 | | | | |
| 7 | RA311082461 | Thin film panel assembly | 1 | | set | | |
| 8 | RA311032461 | Auxiliary handle assembly | 1 | | set | | |
| | | Auxiliary handle (black) | 1 | | | | |
| | | Clamp plate | 1 | | | | |
| | | Bolt M6×60 | 1 | | | | |
| | | Knob | 1 | | | | |
| | | Rubber ring | 1 | | | | |
| 9 | RA363012461 | Four gear switch | 1 | | | | |
| 10 | RA333072461 | Reset spring | 1 | | | | |
| 11 | RA363022461 | Micro switch | 1 | | | | |
| 12 | RA341072461 | | 1 | | | | |

| Ref # | Part # | Description | Qty | Context | Note | Cost | MSRP |
|--------------|---------------|--|------------|----------------|-------------|-------------|-------------|
| 13 | RA341062461 | Self locking speed control button Switch trigger | 1 | | | | |



Rod

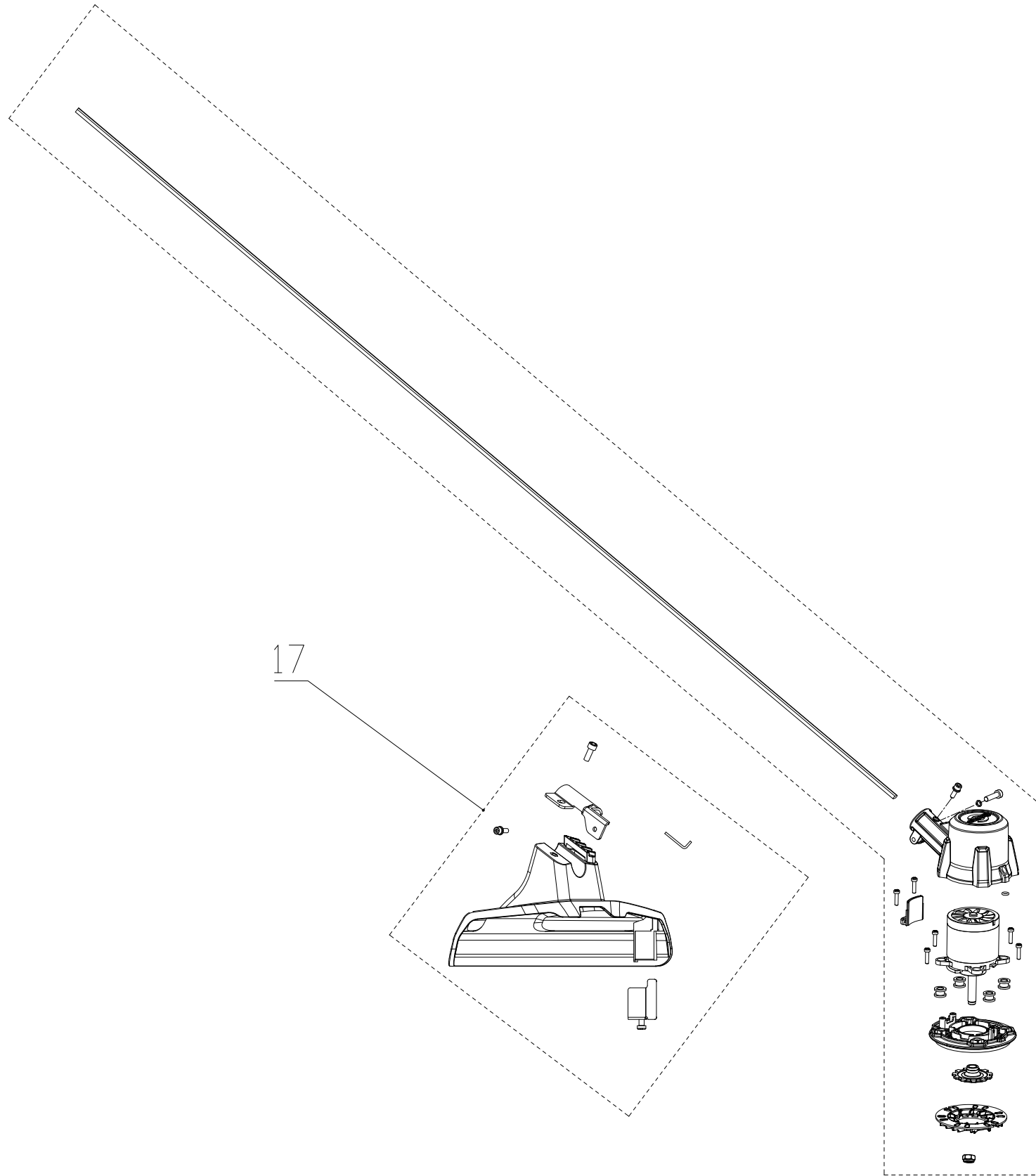
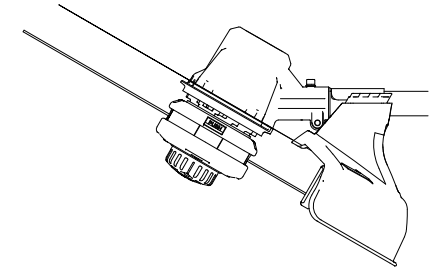


| | |
|------------|---------|
| 2100086-BZ | |
| ERP NO. | 2100086 |
| Model code | 82T10 |

| Ref # | Part # | Description | Qty | Context | Note | Cost | MSRP |
|-------|--------------|----------------------------------|-----|---------|------|------|------|
| 14 | RA363032461C | Speed regulating switch assembly | 1 | | set | | |
| | | Speed regulating switch | 1 | | | | |
| | | Switch sleeve | 1 | | | | |
| 15 | RA311142461 | Rod assembly | 1 | | set | | |
| | | Single node | 1 | | | | |
| | | Motor clamp tube? | 1 | | | | |
| | | pipe clamp rubber pad? | 1 | | | | |
| | | pipe clamp rubber pad | 1 | | | | |
| | | Hoop | 1 | | | | |
| | | Bolt | 1 | | | | |
| | | Screw | 1 | | | | |
| | | Screw | 2 | | | | |
| | | Screw | 1 | | | | |
| 16 | RA311062461 | Straps buckle assembly | 1 | | set | | |
| | | Screw M5*12 | 1 | | | | |
| | | Nut M5 | 1 | | | | |
| | | Strap clamp pipe | 1 | | | | |
| | | Strap Buckle | 1 | | | | |



Head



17

18

20

19

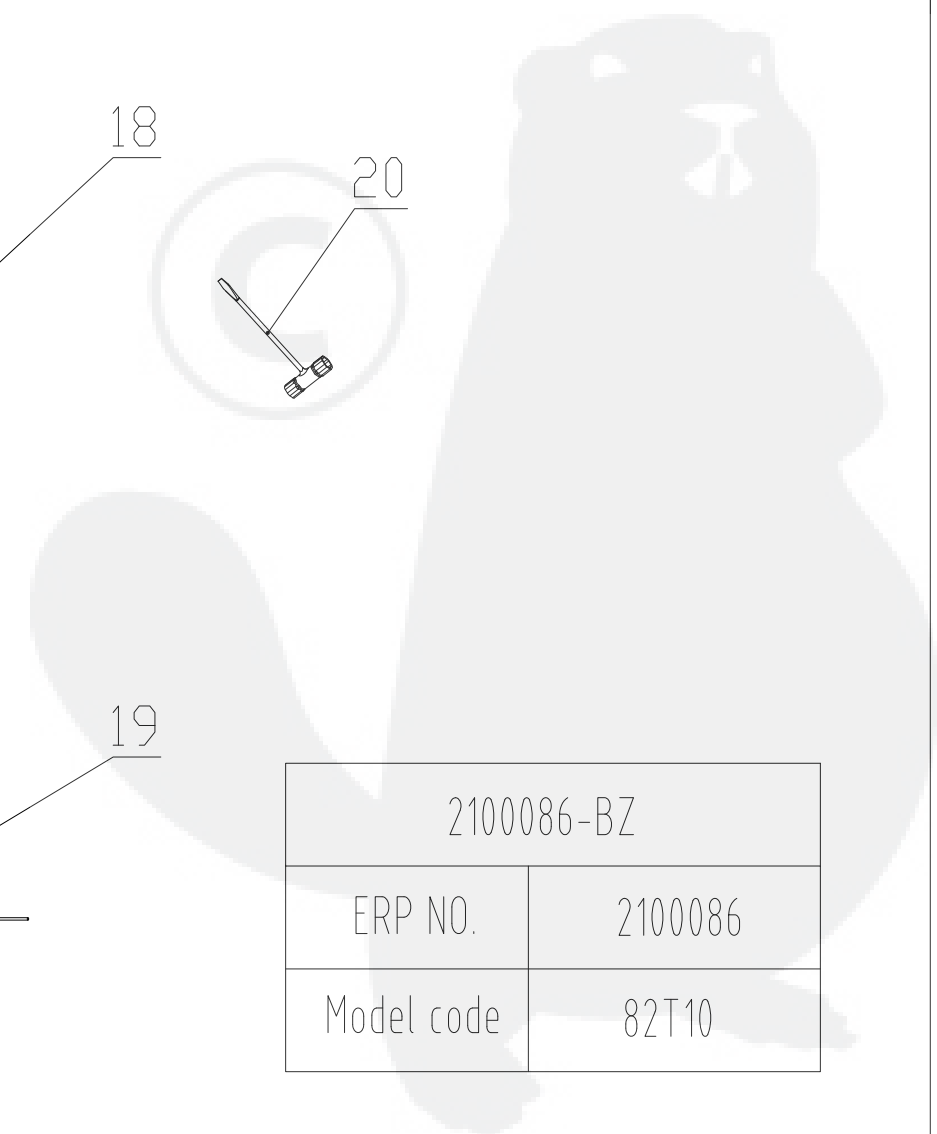
2100086-BZ

ERP NO.

2100086

Model code

82T10



| Ref # | Part # | Description | Qty | Context | Note | Cost | MSRP |
|-------|--------------|---|-----|---------|------|------|------|
| 17 | RA311042461 | Guard assembly | 1 | | set | | |
| | | Bolt | 1 | | | | |
| | | Bolt | 1 | | | | |
| | | Screw | 1 | | | | |
| | | Allen key | 1 | | | | |
| | | Tool bar | 1 | | | | |
| | | Unidirectional blade | 1 | | | | |
| | | Connecting piece | 1 | | | | |
| | | Protection cover | 1 | | | | |
| 18 | RA361002461A | Motor assembly NEW (2018/12) | 1 | | set | | |
| | | Blade nut | 1 | | | | |
| | | Bolt M5*15 | 1 | | | | |
| | | Screw | 4 | | | | |
| | | Screw | 2 | | | | |
| | | Bolt | 1 | | | | |
| | | Spring washer | 1 | | | | |
| | | Internal six angle tool wrench (17 pairs of sides) | 1 | | | | |
| | | Shaft slee | 1 | | | | |
| | | Magnesium alloy Fan | 1 | | | | |
| | | Magnesium alloy shell | 1 | | | | |
| | | Shell cover | 1 | | | | |
| | | Special-shaped pressure plate | 1 | | | | |
| | | Rubber cushion | 4 | | | | |
| | | Heat shrinkable tube | 1 | | 10cm | | |
| | | O type ring | 1 | | | | |
| | | Motor | 1 | | | | |
| | | Three core line (flat line) | 1 | | | | |
| | | Male Plug terminal | 3 | | | | |
| | | female Plug terminal | 3 | | | | |
| | | Heat shrinkable tube | 1 | | 20cm | | |
| 19 | RA311121410D | Trimmer head assembly | 1 | | set | | |
| 20 | RA333022341A | Allen wrench | 1 | | set | | |

