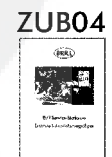
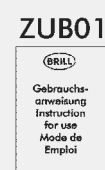
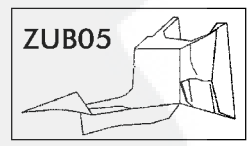
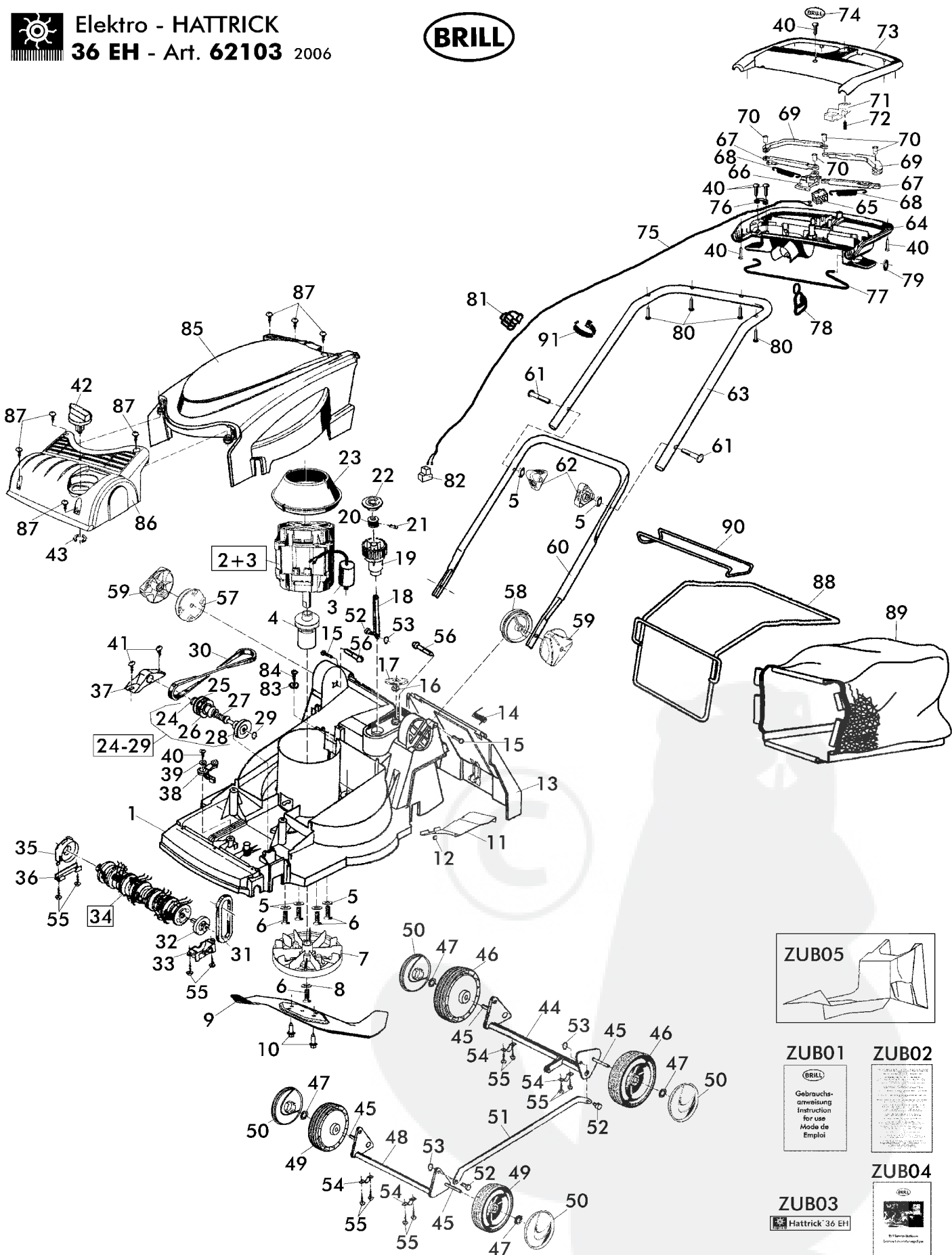


Elektro - HATRICK
36 EH - Art. 62103 2006



| 2/3 | ELEKTRO - HATRICK | |  | 36 EH - Art. 62103 2005/2006 |  |
|------------------------------|------------------------------------|---------------------------------------|----------------------------------------------------------------------------------|---------------------------------|------------------------------------------------------------------------------------|
| 2006 | ELECTRO - HATRICK | | | | |
| Rev20060120 | HATRICK Électrique | | | | |
| Bild Nr. REF.N° POS.N° | BEST.-NR. PART-N° N°d. PIECE | BEZEICHNUNG | DESCRIPTION | Anzahl Qty. Qte. | |
| 1 | 14470 | Gehäuse 36 EH RAL6001_2005 | Chassis 36 EH_2005 | 1 | |
| 2+3 | 14474 | E-Motor 1500 W inkl. Kondensator | Electric motor 1500 W w./condenser | 1 | |
| 3 | 14004 | Kondensator 16 µF | Condenser 16 µF | 1 | |
| 4 | 14469 | Riemenscheibe | Pulley | 1 | |
| 5 | 06465 | Scheibe A8,4 DIN125 | Washer A8,4 DIN 125 | 6 | |
| 6 | 14017 | SKT-Schraube ISO4017 M8*20-10.9 verz. | Screw ISO4017 M8*20-10.9 verz. | 5 | |
| 7 | 14132 | Messeraufnahme | Blade receptacle | 1 | |
| 8 | 06842 | Scheibe A8,4 DIN9021 VERZ | Screw A8,4 DIN9021 VERZ | 1 | |
| 9 | 14035 | Messer 36 | Blade 36 | 1 | |
| 10 | 14785 | SKTB-Schraube St8*25 DIN6928 | Screw St8*25 DIN6928 | 2 | |
| 11 | 11932 | Schwelle 36 Fe | Steel slide plate 36 | 1 | |
| 12 | 09304 | Klammer UK15358 | Clamp UK15358 | 1 | |
| 13 | 14473 | Heckklappe RAL2002 | Rear flap RAL2002 | 1 | |
| 14 | 08841 | Drehfeder | Leg spring | 1 | |
| 15 | 08512 | Bolzen RAL6001 | Bolt RAL6001 | 2 | |
| 16 | 08782 | O-Ring 12,1x2,7 | O-Ring 12,1x2,7 | 1 | |
| 17 | 10443 | Skalenrad | Scale wheel | 1 | |
| 18 | 15069 | Zugstange gepulvert | Tension rod | 1 | |
| 19 | 08516 | Verstellknopf | Adjustment knob | 1 | |
| 20 | 08606 | Verstellbolzen | Adjustment bolt | 1 | |
| 21 | 08607 | Zylinderstift DIN 0007-10H8x22 | Pin 10 H8x22 | 1 | |
| 22 | 11035 | Deckel | Cober plate | 1 | |
| 23 | 14913 | Luftführung | Air guide | 1 | |
| 24-29 | 10356 | Antriebswelle komplett montiert | HATRICK-Drive-shaft assy. 36 | 1 | |
| 24 | 10252 | Kugellager 10x26x8 6000-2RS1 | Ball bearing 10x26x8 6000-2RS1 | 1 | |
| 25 | 10259 | Riemenscheibe RAL9005 | Pulley RAL 9005 | 1 | |
| 26 | 10256 | Kupplungsscheibe RAL9005 | Clutch disc RAL9005 | 1 | |
| 27 | 10260 | Druckfeder | Pressure spring | 1 | |
| 28 | 10255 | Riemenscheibe Alu | Pulley Aluminium | 1 | |
| 29 | 10253 | Sicherungsring 10x1 DIN471 | Circlip 10x1 DIN 471 | 1 | |
| 30 | 10372 | Keilriemen 8 x 610, FO-N | Belt 8 x 610, FO-N | 1 | |
| 31 | 10242 | Keilriemen Typ 8 x 300 FO-Z | Belt Typ 8 x 300 FO-Z | 1 | |
| 32 | 10266 | Abtriebswelle komplett montiert | Lower drive shaft assy. 36 | 1 | |
| 33 | 10239 | Riemenabdeckung | Belt cover | 1 | |
| 34 | 10358 | Pflegewalze 36 komplett montiert | Areator cylinder 36 assy. cpl. | 1 | |
| 35 | 10238 | Lagerschild RAL9001 | Bearing housing | 1 | |
| 36 | 10428 | Klemmhalter | Clamp plate | 1 | |
| 37 | 10243 | Lagerbock RAL9001 | Bearing bracket | 1 | |
| 38 | 11064 | Schalthebel komplett montiert | I/O-lever assy. | 1 | |
| 39 | 06843 | Scheibe B5,3 DIN9021 VERZ | Washer B5,3 DIN9021 VERZ | 1 | |
| 40 | 10268 | LIB-Schraube 4,8*19 DIN7981 | Screw 4,8*19 DIN7981 | 7 | |
| 41 | 10948 | PT-Schraube KA70x25 | PT-screw KA70x25 | 2 | |
| 42 | 11036 | Schaltknopf | I/O Knob | 1 | |
| 43 | 10564 | Seeger-Halbmondtring | Seeger connection half ring | 1 | |
| 44 | 14967 | Hinterachse | Rear axle | 1 | |
| 45 | 14966 | Laufradachse D= 12 mm | Wheel axle D= 12 mm | 4 | |
| 46 | 14043 | Laufrad 160 hinten | Rear wheel 160 | 2 | |
| 47 | 14013 | Starlock,Schnellbef.Ø12/399417 | Starlock Ø12/399417 | 4 | |
| 48 | 14968 | Vorderachse | Front axle | 1 | |
| 49 | 14020 | Laufrad 150 vorne | Front wheel 150 | 2 | |
| 50 | 14021 | Radkappe 150 | Wheel cap 150 | 4 | |
| 51 | 15062 | Verbindungsstange | Connection rod | 1 | |
| 52 | 11309 | Bolzen 36 E/EH | Bolt 36E/EH | 3 | |

| 3/3 | ELEKTRO - HATRICK | |  | 36 EH - Art. 62103 2005/2006 |  |
|------------------------------|-------------------------------------|----------------------------------------|----------------------------------------------------------------------------------|---------------------------------|------------------------------------------------------------------------------------|
| 2006 | ELECTRO - HATRICK | | | | |
| Rev20060120 | HATRICK Électrique | | | | |
| Bild Nr. REF.N° POS.N° | BEST.-NR. PART-N° N° d. PIECE | BEZEICHNUNG | DESCRIPTION | Anzahl Qty. Qte. | |
| 53 | 06755 | S-Scheibe 5 DIN6799 VERZ | Washer 5 DIN6799 VERZ | 3 | |
| 54 | 08517 | Achsbefestigungsschelle | Axle plate | 4 | |
| 55 | 06823 | LIB-Schraube B4,2x22 DIN7981 | Screw B4,2x22 DIN7981 | 12 | |
| 56 | 14759 | Schraube DIN603-M8x60 verz. | Screw DIN603-M8x60 verz. | 2 | |
| 57 | 14895 | Höhenverstelle rechts | Adjustment washer right | 1 | |
| 58 | 14896 | Höhenverstelle links | Adjustment washer left | 1 | |
| 59 | 14009 | Gelenkspanngriff | Link mounting grip | 2 | |
| 60 | 14477 | Gestänge-Unterteil | Lower handle bar | 1 | |
| 61 | 09191 | Formschraube M8 | Special screw | 2 | |
| 62 | 08288 | Holmspanngriff | Connection grip | 2 | |
| 63 | 14479 | Gestänge-Oberteil | Upper handle bar | 1 | |
| 64 | 14176 | Griffschale unten | Lower grip jacket | 1 | |
| 65 | 14184 | Schalter Index | Switch Index | 1 | |
| 66 | 14180 | Schaltschwinge | Switch rocker | 1 | |
| 67 | 14179 | Gelenkstange | Joint rod | 2 | |
| 68 | 14193 | Zugfeder | Tension spring | 2 | |
| 69 | 14178 | Schalttaste | Connect button | 2 | |
| 70 | 14182 | Gelenkbolzen | Joint bolt | 4 | |
| 71 | 14181 | Auslösetaste | Release key | 1 | |
| 72 | 13563 | Druckfeder | Pressure spring | 1 | |
| 73 | 14177 | Griffschale oben | Upper grip jacket | 1 | |
| 74 | 10571 | Brill-Logo | Brill-Logo plate | 1 | |
| 75 | 14571 | Netzleitung H05 | Power cable H05 | 1 | |
| 76 | 14851 | Kabelklemme | Cable clip | 1 | |
| 77 | 14188 | Flick-Flack | Flick-Flack | 1 | |
| 78 | 10962 | Zugentlastung | Pull relief | 1 | |
| 79 | 14750 | Starlock,Schnellbef.Ø6/399459 | Starlock Ø6/399459 | 2 | |
| 80 | 11264 | LIB-Schraube 4,8*32 DIN7981 -St, verz. | Screw 4,8*32 DIN7981 -St, verz. | 4 | |
| 81 | 11222 | Kabelklemme | Cable clip | 1 | |
| 82 | 10988 | LPH Steckhülse | LPH plug | 2 | |
| 83 | 07499 | Scheibe A4,5*23*1,6DIN9021-ST | Washer A4,5*23*1,6DIN9021-ST | 1 | |
| 84 | 08541 | LIB-Schraube B4,2*32 DIN7981-ST VERZ | Screw B4,2*32 DIN7981-ST VERZ | 1 | |
| 85 | 14471 | Abdeckung RAL2002 | Cover RAL2002 | 1 | |
| 86 | 14472 | Frontabdeckung | Front cover | 1 | |
| 87 | 14464 | LIB-Schraube B6,3*32 DIN7981-ST VERZ | Screw B6,3*32 DIN7981-ST | 7 | |
| 88 | 10712 | Fangsackgestell | Grass catcher frame | 1 | |
| 89 | 14973 | Fangsack RAL6001 | Grass catcher bag | 1 | |
| 90 | 10713 | Fangkorbtragegriff | Grass catcher grip | 1 | |
| 91 | 13952 | Kabelbinder # 5223 7,8x180 | Cable tie | 1 | |
| ZUBEHÖR | | | Accessories | | |
| ZUB01 | 14475 | Gebrauchsanweisung 62103 | Instruction for use 62103 | 1 | |
| ZUB02 | 14476 | GAW Ergänzungen 62103 | Instruction addendum 62103 | 1 | |
| ZUB03 | 15065 | Aufkleber, 36 EH | Label 36 EH | 1 | |
| ZUB04 | 00563 | Brill-Service-Verzeichnis (optional) | Brill-Service-booklet (optional) | 1 | |
| ZUB05 | 11340 | Mulchereinsatz 36 | Mulch insert 36 | 1 | |