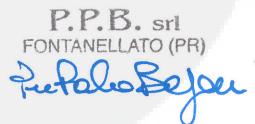




I	FR	GB	D	E	NL
DICHIARAZIONE DI CONFORMITÀ	DECLARATION DE CONFORMITÉ	DECLARATION OF CONFORMITY	KONFORMITÄTS-ERKLÄRUNG	DECLARACIÓN DE CONFORMIDAD	DECLARATIE VAN CONFORMITEIT
lo sottoscritto,	Je soussigné,	The undersigned,	Der Unterzeichnende im Name der,	El abajo firmante,	Ondergetekende,
P.P.B. s.r.l. – Via Don Milani, 19 – 43012 Fontanellato (PARMA) – ITALY					
dichiara sotto la propria responsabilità che il sollevatore,	déclare sous sa propre responsabilité que la table élévatrice,	declares under its own responsibility that the lifting platform,	erklärt auf eigene Verantwortung dass die Hebebühne,	declara bajo su responsabilidad que la mesa elevadora,	verkaart op eingen verantwoordelijkheid dat de te liften tafel,
Marca:	Marque:	Trademark:	Marke:	Marca:	Merk:
<i>Bike-Lift</i>					
Numero di serie Modello:	Numéro de série Modèle:	Serial number Model :	Serien-Nummer Modell:	Numero de serie Modelo:	Seriennummer Model:
conforme alla direttiva:	est conforme aux spécifications de la directive:	complies with the requirements established by directive:	den Bestimmungen des Erlasses:	cumple los requisitos de la directiva:	overeenkomt met het gestelde in:
N° 98/37/CE					
e successive modifiche ed integrazioni, secondo le norme:	et compris les modifications et les intégrations, selon la norme:	and subsequent modifications and supplements, according to standard:	und den nachfolgenden Änderungen entspricht, entsprechend den Richtlinien:	y sucesivas modificaciones e integraciones, según la norma:	en aanvullingen en modificaties hiervan, volgens richtlijn:
EN 292 – Parte 1 e 2; EN 294; EN349; EN 418; EN 1493; EN 60 204.1;					
CNR UNI 10011-88; UNI 1307 e 1309; UNI 1285-68					
P.P.B. srl FONTANELLATO (PR) 					
Pier Paolo Barigazzi					

INDEX

Chapter 1. – General Instructions

Chapter 2. – Identification of the Motorcycle Lift

Chapter 3. – Identification of the Manufacturer

Chapter 4. – Identification of the CE User's Instructions Manual

Chapter 5. – General Safety Instructions

Chapter 6. – Technical Features

6.1 Denomination

6.2 Use Conditions

6.3 Aim

6.4 Working Area

6.5 Noise

Chapter 7. – Description of the Motorcycle Lift

7.1 Safety Devices

7.2 Standard Accessories

7.3 Optional Accessories

Chapter 8. – Transporting, Displacement and Storage Procedures

8.1 Packing and Transporting

8.2 Unloading and Displacement Procedures

8.3 Receipt and Inspection

8.4 Storage

Chapter 9. – Installation

9.1 Setting Up

9.2 Set in Action

9.3 Initial Cleaning

9.4 Pre-Operation Inspection

Chapter 10. – Setting Up and Use

10.1 *Safety Instructions*

10.2 *Use of the Lift*

10.3 *Lifting Manoeuvres*

10.4 *Descent Manoeuvres*

10.5 *Troubleshooting*

Chapter 11. – Cleaning and Service

11.1 *Cleaning*

11.2 *Ordinary Cleaning of the Motorcycle Lift*

11.3 *Cleaning of the Working Area*

11.4 *Periodic Inspection*

11.5 *Greasing*

Chapter 12. – Dismantlement and Scrapping

12.1 *Dismantlement*

12.2 *Dismantlement of the Mechanical Structure*

12.3 *Scrapping*

Chapter 13. – Installation of the Motorcycle Lift

Chapter 14. – Spare Parts

Officine P.P.B.

- No part of this publication may be reproduced or transmitted in any forms or by any means, without the prior written permission of the Manufacturer.
- Changes may be periodically made to the drawings, data and specifications in this publication without obligation to notify any person of such revision or modification.



1. GENERAL INSTRUCTIONS

This User's Instructions Manual is an integral part of the Motorcycle Lift. Hereafter, the simple word "MANUAL" shall mean the User's Instructions Manual.

The aim of this publication is to supply Technicians with safe and clear instructions on the installation, the use, the maintenance and the dismantlement of the Lift.

This Manual must be carefully read before use and saved for future reference. Installation, use, maintenance and dismantlement other than what is described herein is the User's complete responsibility and relieves the Manufacturer of all responsibility.

In accordance with Directive no. 98/37/CE and its subsequent modifications or supplements, "TECHNICIAN" shall mean the single person or the people responsible for installation, operation, check-up, maintenance, cleaning, repairing and displacement of the Motorcycle Lift.

WARNING: Never allow children, unlicensed people or Technicians with bad knowledge of this Manual to use the Motorcycle Lift.

Always keep children and unlicensed people away from the working area.

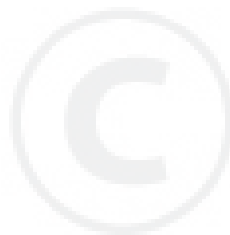
Out of use protection and safety devices are the Purchaser or the User's complete responsibility.

Any mechanical, hydraulic, electrical or operating modification of the Lift without the prior written notification of the Manufacturer is forbidden.

P.P.B. s.r.l. disclaims all responsibility concerning inconvenience, breakdown or upset arising from a misuse of the Lift, from a bad knowledge of the instructions herein contained, or from changes and modifications not expressly approved by the Manufacturer.

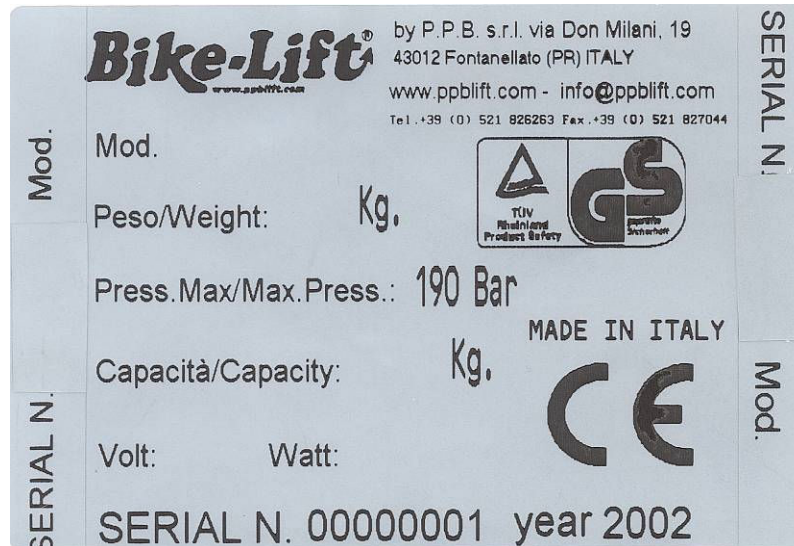
Read and understand the User's Instructions Manual before displacing, installing, using and servicing the Lift.

Failure to do so could result in personal injury or equipment damage.



2. IDENTIFICATION OF THE MOTORCYCLE LIFT

This Motorcycle Lift bears the CE approval according to Directive 98/37/CE and its subsequent modifications or supplements.



The serial number and the model number are recorded on the label affixed to the scissor of the Lift and on the Declaration of Conformity here enclosed.

All correspondence concerning your equipment or any required spare parts should include the serial number and the model number.

Never remove or damage the CE label.

No liability under the guarantee shall be incurred where the CE label has been removed or altered in any way.

Changes or esthetical modifications may be made periodically to the Motorcycle Lifts without obligation to notify any person of such revision. These changes shall not affect in any way the descriptions and the instructions herein contained.

3. IDENTIFICATION OF THE MANUFACTURER

P.P.B. s.r.l.

Via Don Milani, 19

43012 Sanguinaro di Fontanellato (Parma)

Phone number: 0039-0521-826263

Fax number: 0039-0521-827044

4. IDENTIFICATION OF THE CE USER'S INSTRUCTIONS MANUAL

This CE User's Instructions Manual is issued by P.P.B. s.r.l. and it should be considered as a permanent part of the Motorcycle Lift.

The aim of this publication is to supply Technicians with safe and clear instructions on the use and maintenance of the Lift.

This Manual must be carefully read before use and saved for future reference.

Here are some ways to take care of your Instructions Manual:

- Do not damage the Instructions Manual. Always keep it in good conditions.
- Do not remove, add, change or re-write any part of the Instructions Manual. All changes to the Instructions Manual must be made by P.P.B. s.r.l.
- Keep this Manual away from highly damp places. Keep it dry not to compromise its efficiency.
- This Manual should be considered as a permanent part of the Lift and should remain with it if it is resold.

No part of this publication may be reproduced or transmitted in any forms or by any means, without the prior written permission of the Manufacturer.

Partly derogating the above, P.P.B. s.r.l. allows the Purchaser or the User to make a copy of this publication.

Always keep the copy near the Motorcycle Lift for quick and easy reference. This will allow you to take care of the original Instructions Manual and preserve it in good conditions.

Changes may be periodically made to the drawings, data and specifications in this publication without obligation to notify any person of such revision or modification.

Should substantial changes be made to the Motorcycle Lift, such changes will be incorporated in new editions of this Manual.

TECHNICAL SERVICING

Do not attempt to service the product yourself. Refer all servicing to P.P.B. s.r.l.'s qualified service personnel.

Service and maintenance other than what is covered by the operating instructions may result in damage and will often require extensive work by a qualified Technician to restore the product to normal condition.

5. GENERAL SAFETY INSTRUCTIONS

The use of this Motorcycle Lift is restricted to Professionals and qualified Technicians only, in accordance with the requirements established by Directive 98/37/CE and its subsequent modifications or supplements.

Professionals or qualified Technicians must be in full possession of their mental and physical faculties while using the Lift. They must not be under the influence of drug, alcohol or sedative.

Professionals or qualified Technicians must have full knowledge of the control systems' position and operation. They must know all the features and the characteristics reported in this User's Instructions Manual, before use.

Use other than what is foreseen by the Manufacturer is forbidden.

Follow all the warnings and the instructions marked on the Lift.

The working area must be kept free and clean from oil wastes in order to allow safe and easy operation.

Environmental conditions must comply with the safety regulations in force in the countries in which the Lifts have been installed.

Never wear clothes different from those normally used in workshops.

Out of use protection and safety devices are the Purchaser or the User's complete responsibility.

Any mechanical, hydraulic, electrical or operating modification of the Lift without the prior written notification of the Manufacturer is forbidden.

P.P.B. s.r.l. disclaims all responsibility concerning inconvenience, breakdown or upset arising from a misuse of the Lift, from a bad knowledge of the instructions herein contained, or from changes and modifications not expressly approved by the Manufacturer.

Using spare parts different from those recommended by the Manufacturer or making changes not expressly allowed by the Manufacturer relieves P.P.B. s.r.l. of any responsibility.

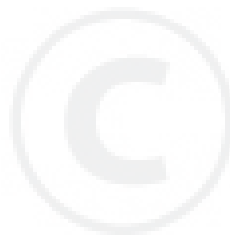
Refer all servicing to qualified service personnel only.

Do not attempt to service this product yourself, as removing mechanical parts or safety devices may expose you to grave dangers or risks. Ordinary and extraordinary maintenance must be made by skilled and qualified Technicians only.

CAUTION: It is highly forbidden to move or displace the Lift when the bike is on (even if it is fastened) or when other workshop equipment are placed on the Lift.

This User's Instructions Manual concerns only the models below.
Read the maximum lifting capacities carefully.

Model	Lifting Capacity
Racing 350	Kg 350
Sport 500 Split	Kg 500
Sport 500 Gate	Kg 500
Max 500	Kg 500
Max 500 Gate	Kg 500
Max 500 Twin Arms	Kg 500
Cruiser 750 Gate	Kg 750
Cruiser 750 Split	Kg 750
Garden 750	Kg 750
Garden Floor 750	Kg 750
Frog 500	Kg 500



6. TECHNICAL FEATURES

This Motorcycle Lift complies with the requirements established by Directive 98/37/CE and its subsequent modifications or supplements, according to standard EN 292 – Part 1 and 2; EN 294; EN 349; EN 418; EN 1493; EN 60 204.1; CNR UNI 10011-88; UNI 1307 and 1309; UNI 1285-68.

P.P.B. s.r.l. certifies that the Lift has been designed and tested to comply with the above mentioned directives.

P.P.B. affixes the CE label to the Lift.

6.1 DENOMINATION

Hydraulic scissor-system Lift specifically designed to service and repair motorcycles.

6.2 USE CONDITIONS

The use of this Lift is restricted to Professionals and qualified Technicians only.

This Motorcycle Lift is designed to raise the bike for ease of maintenance and service. Conceived to be used in motorcycle maintenance shops, it allows quick access to the bike.

Use other than what is foreseen by the Manufacturer is forbidden.

This Lift must be always set in action by one single Technician.

Technicians must always work in properly lightened areas. They must always wear clothing and accident prevention devices suitable to their duties.

6.3 AIM

This Motorcycle Lift has been designed to service, repair or display motorcycles.

Refer to the table on page 10 to check proper lifting capacities.



CAUTION: Raise **ONLY** motorcycles equipped with centre stand or supported by normal paddock stands that hold the bike upright.
NEVER raise motorcycles with side stand.

6.4 WORKING AREA

The working area must be properly lightened, it must not be exposed to danger of explosion, risk of fire or precipitation.

The Lift will work properly if a high value is set on the following statements:

- Room temperature between 5° and 40° C;
- Humidity between 30% and 90% without condensation;
- **STORAGE:** always store the lift indoors and do not expose it to the weather.

6.5 NOISE

The Lift and the working area have been tested at the distance of about 1 m and at the height of about 1,6 m from the ground, during normal use.

The survey has been carried out with a sound level metre that complies with Rule IEC 651, Part 1. The level of the acoustic pressure is 60 dB.

7. DESCRIPTION OF THE MOTORCYCLE LIFT

Basic components of the Lift (see Figure 1):

- (1) Broad tabletop surface;
- (2) Base (it can be anchored to the ground);
- (3) Lifting scissor-system made of two legs in the X shape;
- (4) Hydraulic cylinder (set in motion by a foot, air or electric pump);
- (5) Moving anchor bar with automatic primer (it prevents accidental lowering of the tabletop);
- (6) Safety device system made of two toothed rails, firmly welded to the base of the lift.

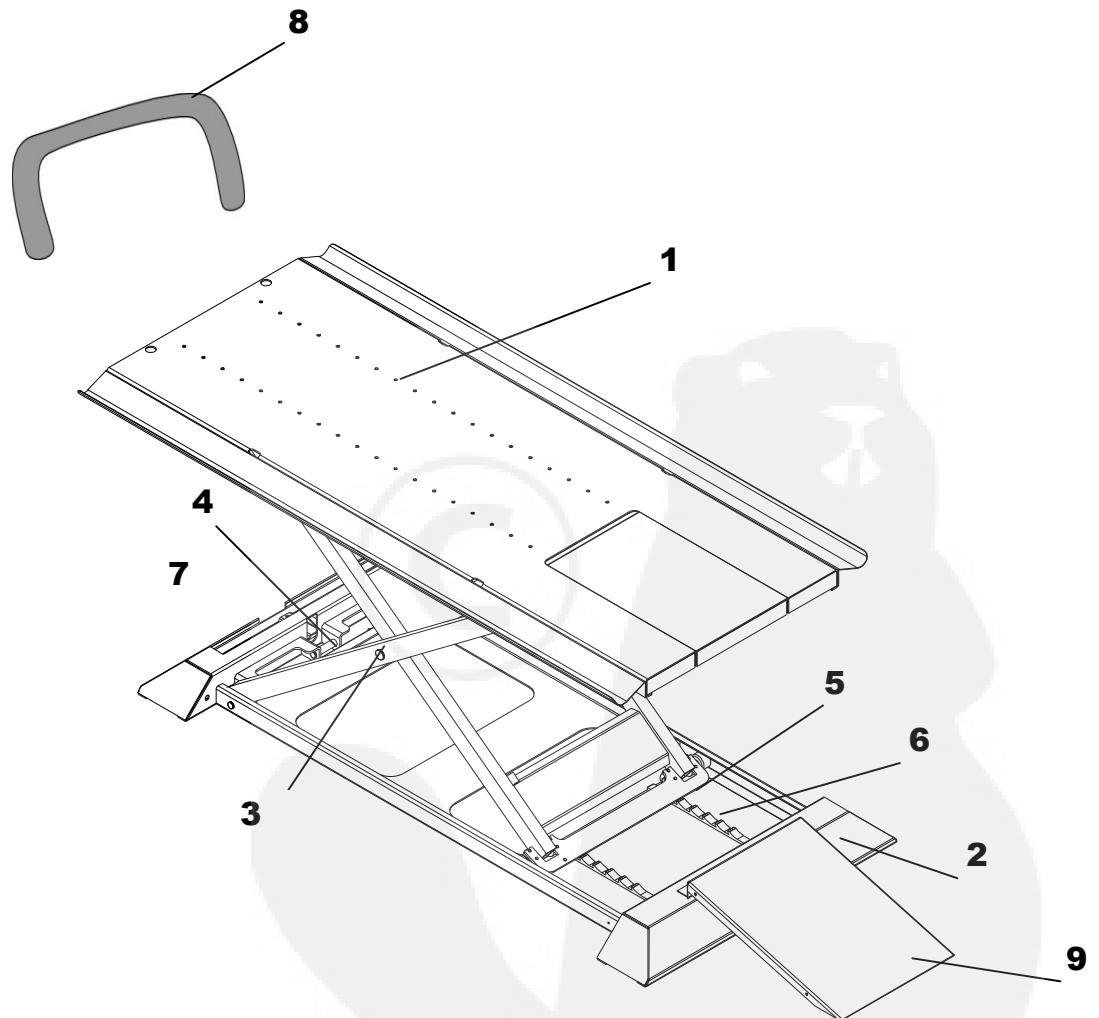


FIGURE 1 – Motorcycle Lift

To allow a safer anchorage of the motorcycle to the Lift, a wheel clamp (option) can be placed on the front side of the tabletop.

The Lift comes supplied with a safety bar (8) that can be fixed to the front side of the tabletop and with a run-up ramp (9) that allows to load the motorcycle easily.

The tabletop is provided with openings that allow to fasten the motorcycle to the tabletop with belts.

The whole structure is made of FE510 and structural plates or pipes; all the pins are made of C40 steel.

It is powder coated with epoxy-polyester powder.

7.1 SAFETY DEVICES

This Lift comes supplied with all the mechanical and hydraulic safety devices required.

In detail (see Figure 1):

- Mechanical safety bar (5) specifically designed to stop the Lift at the most appropriate working height. The stroke of the safety bar is limited by safety locking choices (6) firmly welded to the base of the Lift. The safety locking choices are positioned at the following heights: 56 cm, 67 cm, 76 cm, 84 cm and 95 cm.
- Fall-proof valve (7), built-in the cylinder (4), prevents the Lift from lowering, in case of hydraulic circuit breakdown.
- Front safety bar (8).
- Openings specifically designed to run belts through and to allow easy fastening of the motorcycle to the tabletop.
- Relief valve built-in the foot pump, the hydro-pneumatic or the electro-hydraulic unit.

- Back vent designed for hydraulic detent at intermediate heights.
- Calibrated nipple to keep descent speed constant (in spite of the load on the tabletop).

7.2 STANDARD ACCESSORIES

This Lift comes supplied with the following items:

- Front safety bar (8) made of bent tubing;
- Removable run-up ramp.

7.3 OPTIONAL ACCESSORIES

- Set of fastening belts used to fix the motorcycle to the tabletop;
- Universal front paddock stand;
- Universal rear paddock stand;
- Antiskid rubber or knurled platform;
- Wheel clamp.



8. TRANSPORTING, DISPLACEMENT AND STORAGE PROCEDURES

CAUTION: To ensure safe transporting and proper displacement procedures, pay special attention to the instructions below.

For safety reasons, always fasten the movable parts when transporting the Lift.

8.1 PACKING AND TRANSPORTING

The Lift is packed up by the Manufacturer to allow easy and quick transporting.

The Lift is packed in a millboard crate with two wooden plates (10cm high) which are fastened to the lowest part of the Lift with screws.

The packing includes not only the Motorcycle Lift, but also the run-up ramp (9) and the front safety bar (8).

No more than 5 crates are normally stacked on a wooden pallet. All crates are fastened with metal or plastic straps.

The Motorcycle Lift is always shipped complete with its standard accessories and in perfect condition.

8.2 UNLOADING AND DISPLACEMENT PROCEDURES

Loading and unloading procedures must be carried out according to the safety laws in force.

The crates made of millboard and wood must be displaced using a fork-lift. The forks must be positioned under the millboard crate between one wood and the other.

Unloading and displacement procedures should be carried out by one single Technician wearing gauntlets, accident prevention shoes and a protective helmet, according to the safety laws in force.

Maximum care must be taken with all these procedures.

CAUTION: Never pause in the fork-lift operating area. The accident fall of the crates might be dangerous and might expose people to grave risks.

During unloading procedures, take maximum care with all potential traffic.

Never use the fork-lift on uneven or excessively sloping surfaces.

Always proceed slowly with the fork-lift.

Unloading the millboard crate containing the Motorcycle Lift from the wooden pallet must be carried out by at least four people wearing gauntlets.

This procedure must be always carried out near the area where the Motorcycle Lift will be installed.

8.3 RECEIPT AND INSPECTION

Damage or deterioration of the goods may arise from transporting even though the Lifts are packed with the most suitable wrapping material by skilled Technicians only.

On receipt of the goods, always check the packing.

Should it be seriously damaged, collect the goods with the due reservation.

Also, never forget to take pictures of the damage.

Open the packing, remove all the clips and cut the sticky tape.

On delivery, compare the goods with the items listed in the proper delivery note.

Carefully check that the goods are in good condition.

Should there be any damage, please notify the shipping company (and also P.P.B. s.r.l. for their information) by registered letter within 5 days from the delivery date, adducing photo proof.

8.4 STORAGE

Before being unpacked and installed, the Motorcycle Lift must be stored in a proper place to avoid any undesired operation.

Store the Motorcycle Lift indoors and do not expose it to the weather.

To allow safe storage, do not unpack the Lift. Always place wooden plates under the Lift.

Room temperature and humidity: – 5° / 75°

Relative humidity: between 30% and 90%

Never turn the crate upside down.

Should the Motorcycle Lift be stored without its own packing, place it on wooden plates firmly and wrap it in a piece of cloth.

Do not stack anything on the Motorcycle Lift.

9. INSTALLATION

Installation must be carried out according to the safety laws in force and the instructions herein contained.

9.1 SETTING UP

CAUTION: Never forget to unscrew the wooden plates from the Lift, before use.

No foundations are needed.

Always place the Lift on a plane surface. The surface must be able to carry a minimum weight of 500 kg / m².

The Motorcycle Lift must be placed in the proper position to allow Technicians to work easily and safely.

Keep the Motorcycle Lift at the minimum safety distance from walls or other equipment during operation.

The run-up ramp must allow to load the bike easily.

Never place the run-up ramp near things that might interfere with normal loading or unloading of the bike.

CAUTION: Never place the Lift on uneven or sloping surfaces.

Always take the Motorcycle Lift to the setting-up area by using a fork-lift.
Always unpack the Motorcycle Lift in the setting-up area.

Four expansion screws (M 10 x 10 mm) are needed to fix the Motorcycle Lift to the surface through the holes previously used to fix the two wooden plates.

9.2 SET IN ACTION

To ensure proper Lift operation, follow the instructions herein contained.

9.3 INITIAL CLEANING

No specific initial cleaning is needed.

Be sure that loading and unloading areas are free from used motor oils and dust.

Always wear waterproof gauntlets.

CAUTION: Be sure that no dirt, dust or bolts are inside the Lift.

Keep the sliding rails of the scissor and the safety bar rack free from any object which might interfere with their normal operation.

Always keep the Technicians' working area clean.

Refer to chapter **CLEANING AND SERVICING** to clean the Motorcycle Lift properly.

9.4 PRE-OPERATION INSPECTION

Always make a pre-operation inspection.

Check the Motorcycle Lift to be sure that mechanic and electric installation has been carried out properly

You may prevent an accident or equipment damage.

To allow reliable and safe operation of the product, make sure that:

- The mechanical structure of the Lift has suffered no serious breakdown or damage;
- All the mechanic safety devices above mentioned work properly.
- The connecting pipe between the pump and the hydraulic cylinder is in perfect condition.
- All the snap-rings placed on the pins are correctly mounted.

In the models equipped with electro-hydraulic pumps, make sure that:

- The contact protections of the electric wiring and of the plug (the plug does not come supplied with the Lift, but it has to be installed by the User according to the laws in force in his own country) are in perfect conditions.
- The connecting plug is correctly inserted in.
- The control electric wiring between the pump and the push-button panel is well positioned, it is not twisted, it does not interfere with normal traffic or other machineries.
- The connection to the electric installation is suitable in power and amperage to feed the electro-hydraulic pump (Refer to the specifications indicated on the marking label affixed to the Lift).

10. SETTING-UP AND USE

Never permit anyone to operate the Motorcycle Lift without proper instructions. Read this chapter carefully and know how to set and use the Lift safely.

10.1 SAFETY INSTRUCTIONS

To ensure safe operation, always load and unload the bike from the Lift carefully.

Never allow children, unlicensed people or Technicians with bad knowledge of the Instructions Manual to use the Motorcycle Lift.

Keep children and unlicensed people away from the working area.

The working area represents the minimum space required around the lift for safe operation. Drawing lines on the floor to define the working area is strongly recommended.

No access beyond these lines is allowed.

10.2 USE OF THE LIFT

This Lift is conceived to raise motorcycles, scooters and two-wheeled or four-wheeled vehicles. Their weight must not exceed the lifting capacities listed in the table on page 10.

Never use the Lift to raise people.

Before use, check that the structure of the Lift is free from tools or any other object.

10.3 LIFTING MANOEUVRES

1. Be sure that the tabletop is at the lowest position and the run-up ramp is correctly fitted.
2. Load the bike on the tabletop through the run-up ramp.
3. Place the bike on the centre stand (if the bike does not have any, use one of our rear paddock stand). Never raise bikes with side stand.
4. Fasten the bike with suitable fastening belts (option). The bike must be stable on the tabletop.

CAUTION: Before raising the load, be sure that you have fixed it to the tabletop with fastening belts.

5.
 - Hydraulic foot pump. Press the foot lever.
 - Hydro-pneumatic unit. Press the ascent button.
 - Electro-hydraulic unit. Press the ascent button.
6. Do not expose the load to dangerous slope. Make sure that the load does not get unbalanced while lifting the table.
7. Once you have reached the required working height, slightly lower the Lift to allow the safety bar to be positioned on the safety locking choices.

CAUTION: Never operate when the safety bar is disconnected.

8. The run-up ramp is removable to allow Technicians to have free access to the rear side of the bike easily.

10.4 DESCENT MANOEUVRES

- Re-fit the removable ramp;
- Make sure that the sliding rails of the scissor are free from dirt or bolts which might prevent the Lift from lowering, causing serious damage or sudden jerks;
- Press the ascent button to raise the Lift of approximately 3 cm. Disconnect the safety bar (5) through the appropriate side lever. Press the descent button;
- When the Lift is at the lowest position, unfasten the bike from the belts;
- Take the bike out of the wheel clamp (if you have one on the Lift);
- Unload the bike, braking if needed.



10.5 TROUBLESHOOTING

This is a list of possible situations that may arise during the use of the Motorcycle Lift. This Chapter gives easy answers and solutions to frequently-asked questions.

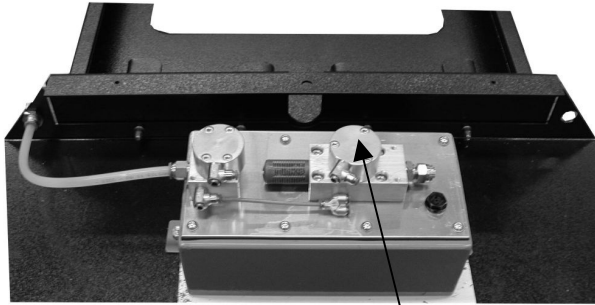
If you still encounter problems after going through the list below, please contact P.P.B. s.r.l. for assistance.

AIR PUMP

PROBLEM	CAUSE	SOLUTION
The Motorcycle Lift operates jerkily or chattering.	There is air inside the hydraulic circuit.	Bleed the hydraulic circuit raising and lowering the Lift several times.
	The air pressure is too low.	Make sure that the pressure of the air supply is 116/145 PSI.
If the pump works, but the Lift will fail to go up.	The oil level inside the pump is too low.	Remove the engine house casing that covers the pump and check the oil level through the oil filler cap (Number 7; Figure 3). If the level is too low, pour the hydraulic oil ISO VG 10 into the air pump.
	The piston that allows the Lift to go down is blocked.	Remove the engine house casing that covers the pump and follow the procedure described in Figure 1.
	There is air in the internal circuit of the pump.	Press ascent and descent buttons at the same time for a few seconds.

The Lift goes up hardly and slowly.	The air pressure is too low.	Make sure that the pressure of the air supply is 116/145 PSI.
	The oil is too viscous.	If the temperature goes below -6°/-10°, the oil decreases its fluidity. To solve the problem, raise and lower the Lift several times so that the oil temperature goes up.
If you press the ascent button, the Lift will fail to go up.	The Lift is not supplied with the air pressure required.	Check the air connection to the Lift.
	The piston that allows the Lift to go up is blocked.	Remove the engine house casing that covers the pump and follow the procedure described in Figure 2.
If you press the descent button, the Lift will fail to go down.	The piston that allows the Lift to go down is blocked.	Remove the engine house casing that covers the pump and follow the procedure described in Figure 1.

FIGURE 1



1

D

1/2. Remove the cylinder "D", but do not disconnect the air hoses.

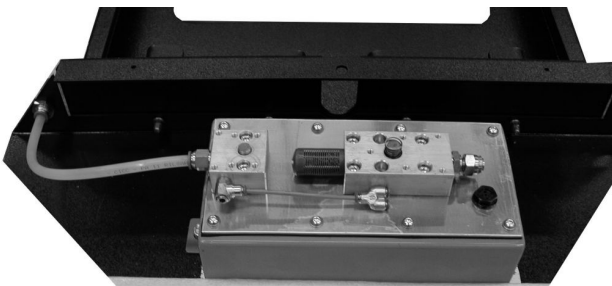
3. Press "A" by using a screwdriver.

If the lift goes down properly, the problem does not concern the pump, but the cylinder "D".

4. Remove the piston "E" from the cylinder "D" blowing the compressed air through the connection "G".

Check the O-ring "F".
If damaged, replace it.

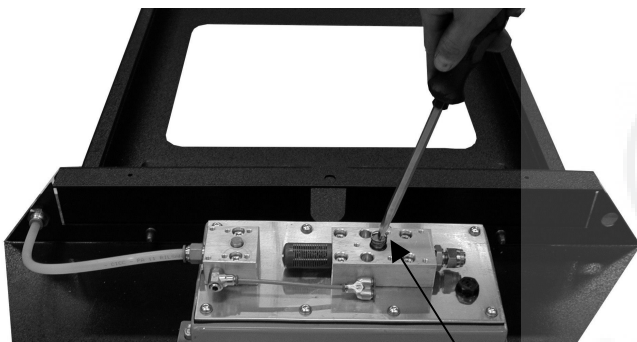
Put everything back in place, greasing the O-ring with Vaseline.



2

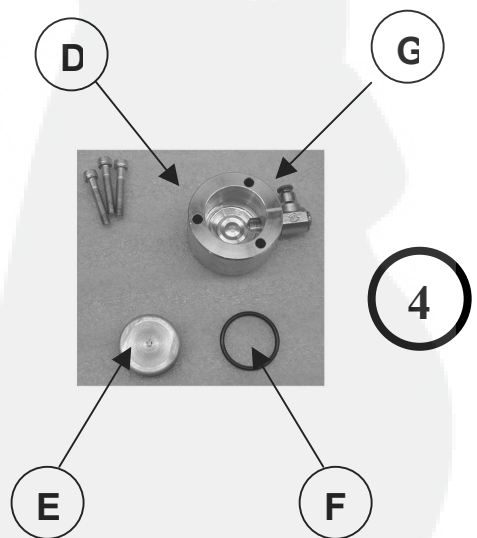


D



3

A



4

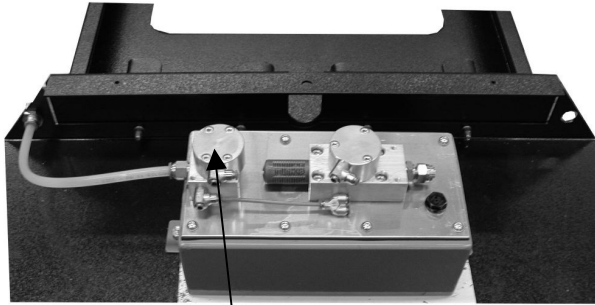
D

G

E

F

FIGURE 2



1

1/2. Remove the cylinder "C", but do not disconnect the air hoses.

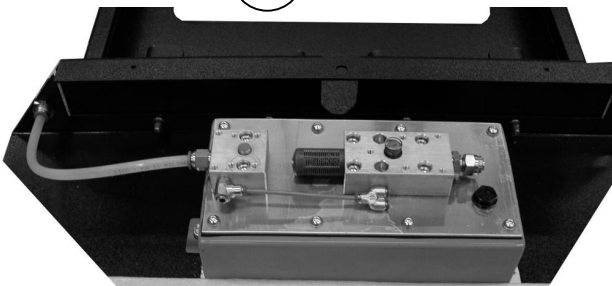
3. Press "A" by using a screwdriver.

If the lift goes up properly, the problem does not concern the pump, but the cylinder "C".

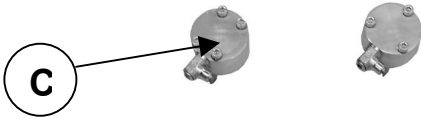
4. Remove the piston "E" from the cylinder "C" blowing the compressed air through the connection "G".

Check the O-ring "F".
If damaged, replace it.

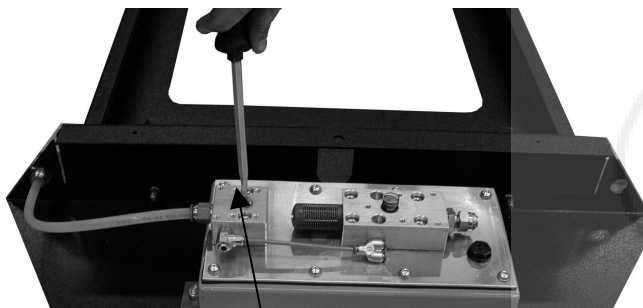
Put everything back in place, greasing the O-ring with Vaseline.



2

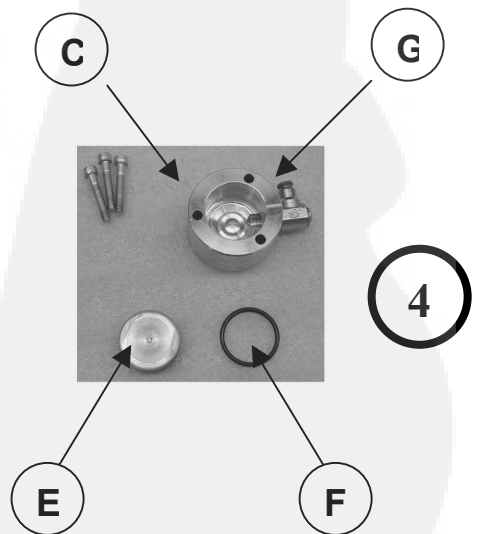


C



3

A



4

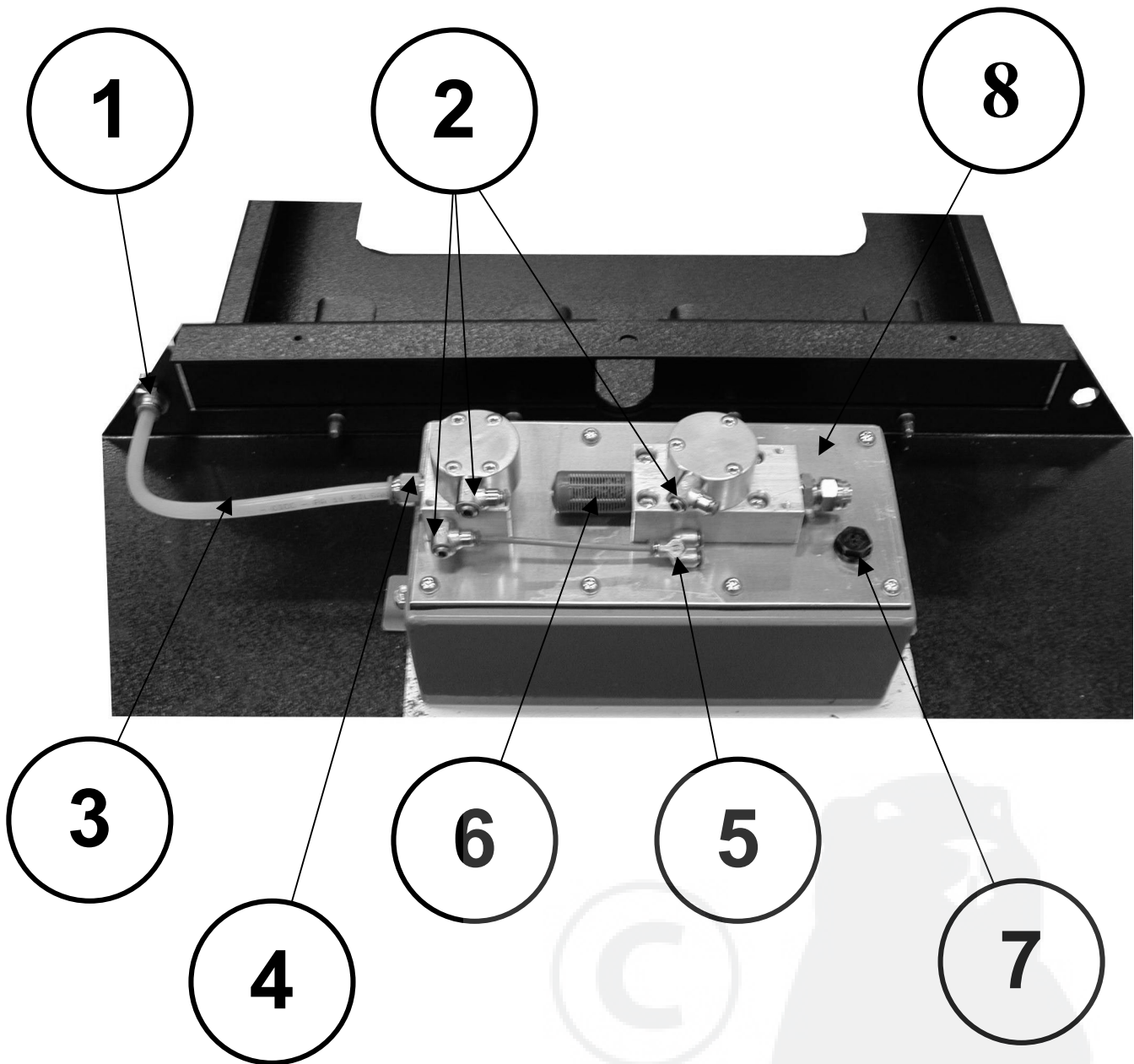
C

G

E

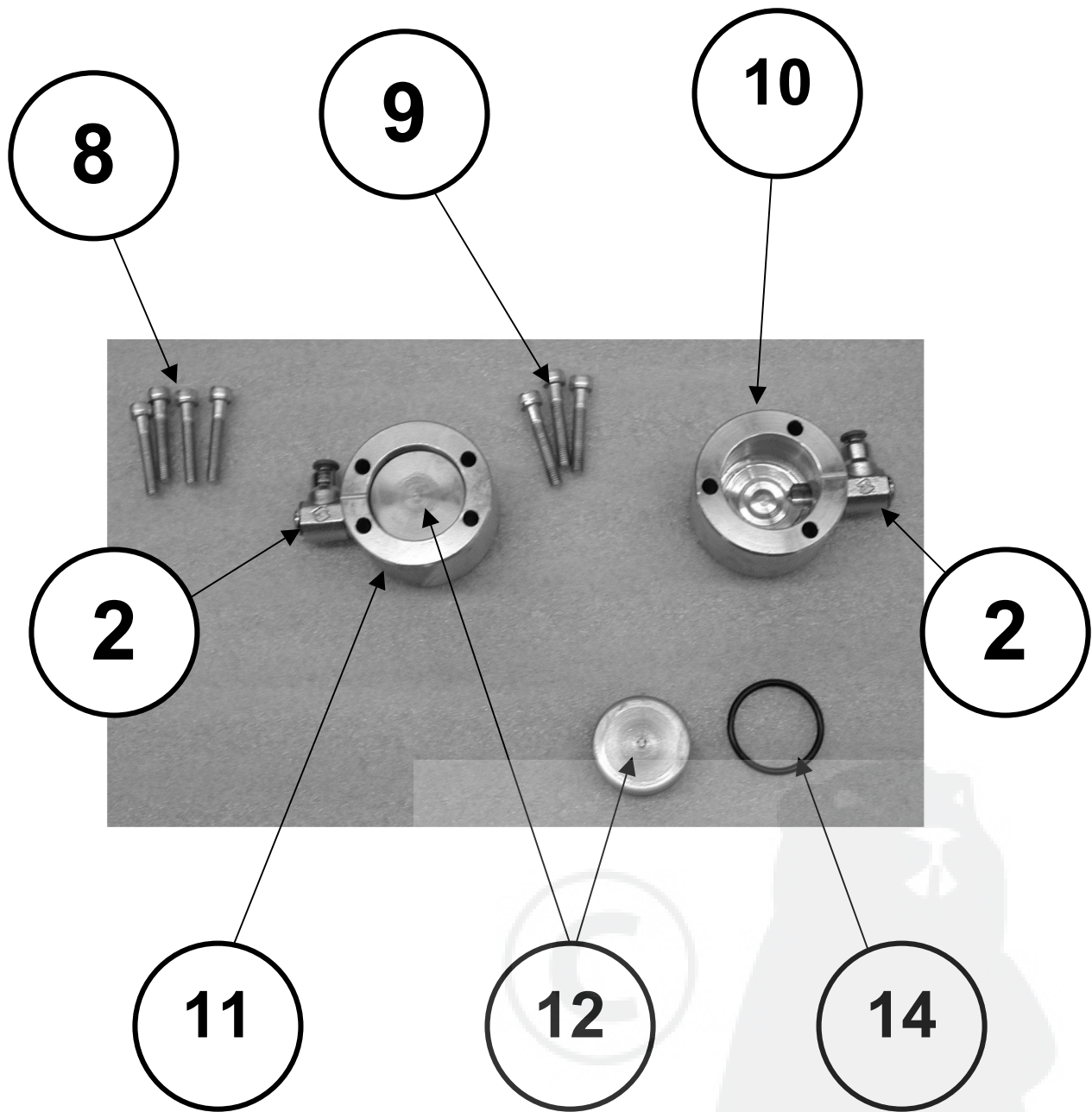
F

FIGURE 3



Part No.	Item No.	Description
1	A30019	AIR HOSE COUPLING
2	A30077	VICTAULIC COUPLING
3	A30010	RILSAN HOSE10X8
4	A30016	VICTAULIC COUPLING 10
5	A30066	VICTAULIC COUPLING - "T" SHAPE
6	A30000	SILENCER – RUBBER HOSE
7	A00000	OIL FILLER CAP
8	BP3002	AIR PUMP

FIGURE 4



Part No.	Item No.	Description
2	A30077	VICTAULIC COUPLING
8	B60024	SET OF 4 SCREWS - M6
9	B60023	SET OF 3 SCREWS - M6
10	ACS300	DESCENT CONTROL CYLINDER
11	ACD301	ASCENT CONTROL CYLINDER
12	PA300M	PISTON
14	PA303M	O-RING

ELECTRIC PUMP

PROBLEM	CAUSE	SOLUTION
The Motorcycle Lift operates jerkily or chattering.	There is air inside the hydraulic circuit.	Bleed the hydraulic circuit raising and lowering the Lift several times.
If you press the ascent button and the engine idles, but the Lift will not go up.	The oil level in the pump is too low.	Remove the engine house casing that covers the pump and check the oil level through the oil filler cap (Number 4 – Figure 3). If the level is too low, pour the hydraulic oil ISO VG 10 into the electric pump.
	Problems with the hydraulic pump.	Consult your dealer or P.P.B. directly.
If you press the ascent button and the engine does not run.	The emergency stop (red button) on the yellow switch has been accidentally pressed.	Release the emergency stop, turning the button clockwise.
	Lack of electricity.	Make sure that the Lift has been plugged into the proper electrical socket.
	The buttons on the yellow switch do not work properly.	Open the yellow switch and replace the buttons.
	The engine has suffered a short-circuit.	Consult your dealer or P.P.B. directly.
If you press the descent button and the engine does not run.	The emergency stop (red button) on the yellow switch has been accidentally pressed.	Release the emergency stop, turning the button clockwise.
	Lack of electricity.	Make sure that the Lift has been plugged into the proper electrical socket.
	The buttons on the yellow	Open the yellow switch and

	switch do not work properly.	replace the buttons (Number 8 – Figure 3).
	The electric valve that controls the descent does not work properly.	Replace the electric valve (Number 5 – Figure 3).
The Lift goes up hardly and slowly.	The oil is too viscous.	If the temperature goes below -6°/-10°, the oil decreases its fluidity. To solve the problem, raise and lower the Lift several times so that the oil temperature goes up.

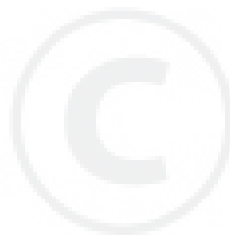
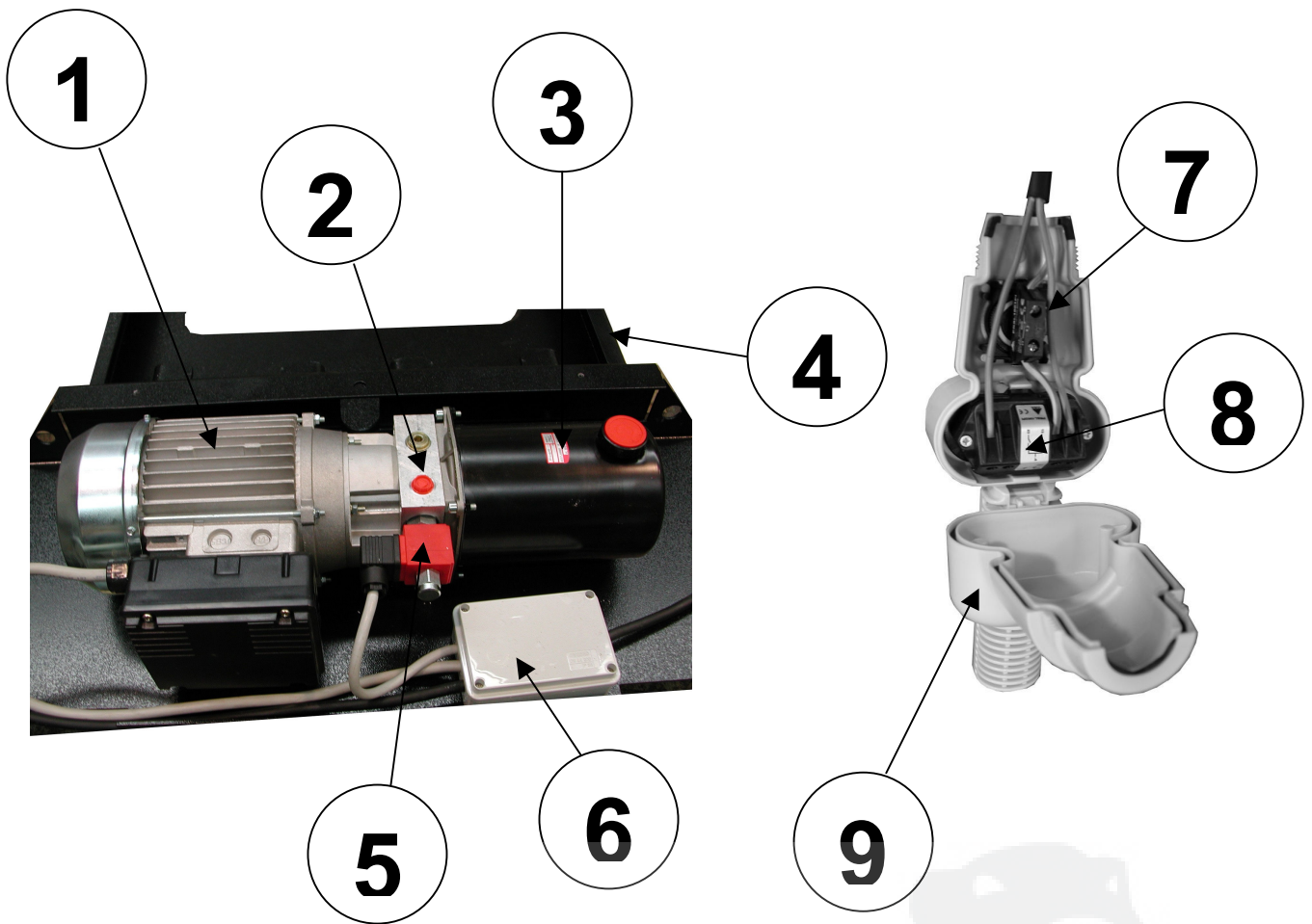


FIGURE 5



Part No.	Item No.	Description
1	EL224050	ELECTRIC ENGINE 240 VOLT 50HZ
1	EL211560	ELECTRIC ENGINE 115 VOLT 60HZ
2	OS2002	ELECTRO-HYDRAULIC UNIT
3	OS1800	OIL TANK
4	OS1805	OIL FILLER CAP
5	OS2406	ELECTRIC VALVE 240 VOLT
5	OS1156	ELECTRIC VALVE 115 VOLT
6	EL300	ELECTRIC WIRES BOX
7	ER2300	EMERGENCY STOP BUTTON
8	ER2310	BUTTONS PANEL
9	ER4500	YELLOW SWITCH

11. CLEANING AND SERVICE

Cleaning does not require any specific technical ability.

A good knowledge of the basic features of the Lift is however highly recommended to avoid any dangerous situation.

On the contrary, maintenance and service must be carried out by skilled personnel only.

CAUTION: Cleaning and maintenance must be always carried out when the safety bar is engaged.

11.1 CLEANING

Always keep the Motorcycle Lift and the working area perfectly clean.

Cleaning concerns:

- The Motorcycle Lift;
- The Technicians' working area.

Always wear suitable gauntlets, resistant to the substances in use (Follow the instructions described on Safety Tables).

Dispose of used cleaning liquids and of waste materials in a manner that is compatible with the environment. Throw them in proper waste disposals and check local laws or regulations before operating.

11.2 ORDINARY CLEANING OF THE MOTORCYCLE LIFT

- Clean the Motorcycle Lift once a week carefully;

- Remove any dirt or dust. Non-corrosive detergents suitable for iron and rubber materials are recommended to clean the Lift. These detergents must not be injurious to the Technicians' health (Always refer to the Safety Tables describing the substances in use. Technicians must choose the proper accident prevention devices to avoid any risk).
- The use of a self-cleaning cloth is recommended while it is forbidden to use water jets and inflammables.
- The range of action and the safety locking choices of the safety bar must be free from oil and grease tracks.

11.3 CLEANING OF THE WORKING AREA

- Keep the working area free from any object which might interfere with the Technicians' normal activity.
- Keep the working area free from oil and grease tracks which might make the floor slippery.
- Always use suitable vacuum cleaners or cleaning equipment.

11.4 PERIODIC INSPECTION

To ensure proper Lift operation, check what follows once a month:

- Be sure that the mechanical structure of the Lift has suffered no serious breakdown or damage;
- Check all welding as well as the correct operation of the safety devices.
- Check the Lift operation to be sure it goes up and down smoothly.
- Be sure that the connecting pipe between the pump and the hydraulic cylinder is in good condition. Otherwise, replace it following the instructions related to the installation of the pump.

- If the oil level is low, remove the oil filler cap and add hydraulic oil to the pump. Always use the hydraulic fluid FINA HYDRAN – TS 10 or equivalent type.

11.5 GREASING

- Check and grease the sliding rails of the scissor regularly.
- Grease all the pins, the shafts and the movable parts at least once a month. In case of frequent use, service the Lift every 15 days.



12. DISMANTLEMENT AND SCRAPPING

Always refer to the laws in force in the country where the Motorcycle Lift needs to be dismantled.

12.1 DISMANTLEMENT

Always use the following procedures to disassemble the Lift and reassemble it in a new area, to store it and scrap it.

12.2 DISMANTLEMENT OF THE MECHANICAL STRUCTURE

Before dismantling the mechanical structure of the Lift, clean it carefully (Refer to Chapter 11 – **Cleaning and Service**)

To displace the Motorcycle Lift, remove all the movable parts following backwards the installation instructions.

To ensure safe operation, refer to Chapter 8 – **Transporting, Displacement and Storage Procedures**.

12.3 SCRAPPING

Scrapping must be carried out safely, using the proper accident prevention devices.

Dispose of the materials composing the Lift carefully:

- Basic structure: Fe 510
- Hydraulic cylinder: Fe 510
- Coating: epoxy-polyester powder
- Gaskets: polyurethane rubber
- Fluid: hydraulic oil ISO VG 10

Rubber parts:

- Dispose of the different materials composing the Lift in proper waste disposals.
- Always check the local laws and regulations in force in the country where the Lift is in use.



13. INSTALLATION OF THE MOTORCYCLE LIFT

TECHNICAL SPECIFICATIONS OF THE ELECTRIC ENGINE:

Voltage: 220/230 volts; Frequency: 50 hz.; Power supply: 1kw

Voltage: 110/115 volts; Frequency: 60hz.; Power supply: 1 kw

POWER SUPPLY

- a) Foot pump. Connect the hydraulic pipe to the nipple placed on the front side of the pump.
- b) Air pump. Connect the circuit of the compressed air to the lift.
- c) Electric pump. Connect the electric cable to the electric system through the plug (it does not come as standard equipment) according to the local laws and regulations in force. The socket must be compulsorily provided with grounding.

HYDRAULIC CIRCUIT CLEANING

- a) Raise the motorcycle lift up to the maximum position of the mechanical safety through the ascent pedal.
- b) Disconnect the safety bar, then push the descent pedal to lower the lift.
- c) Repeat this procedure several times to eliminate any possible air bind which might be present in the hydraulic circuit.
- d) After this procedure has been carried out, the lift will work properly. If it fails to do so, repeat the procedure again.

14. SPARE PARTS

To order spare parts, it is recommended to include the following details concerning your unit:

- Item model and serial number;
- Item number;
- Required quantity;
- Shipping conditions, address and phone number.

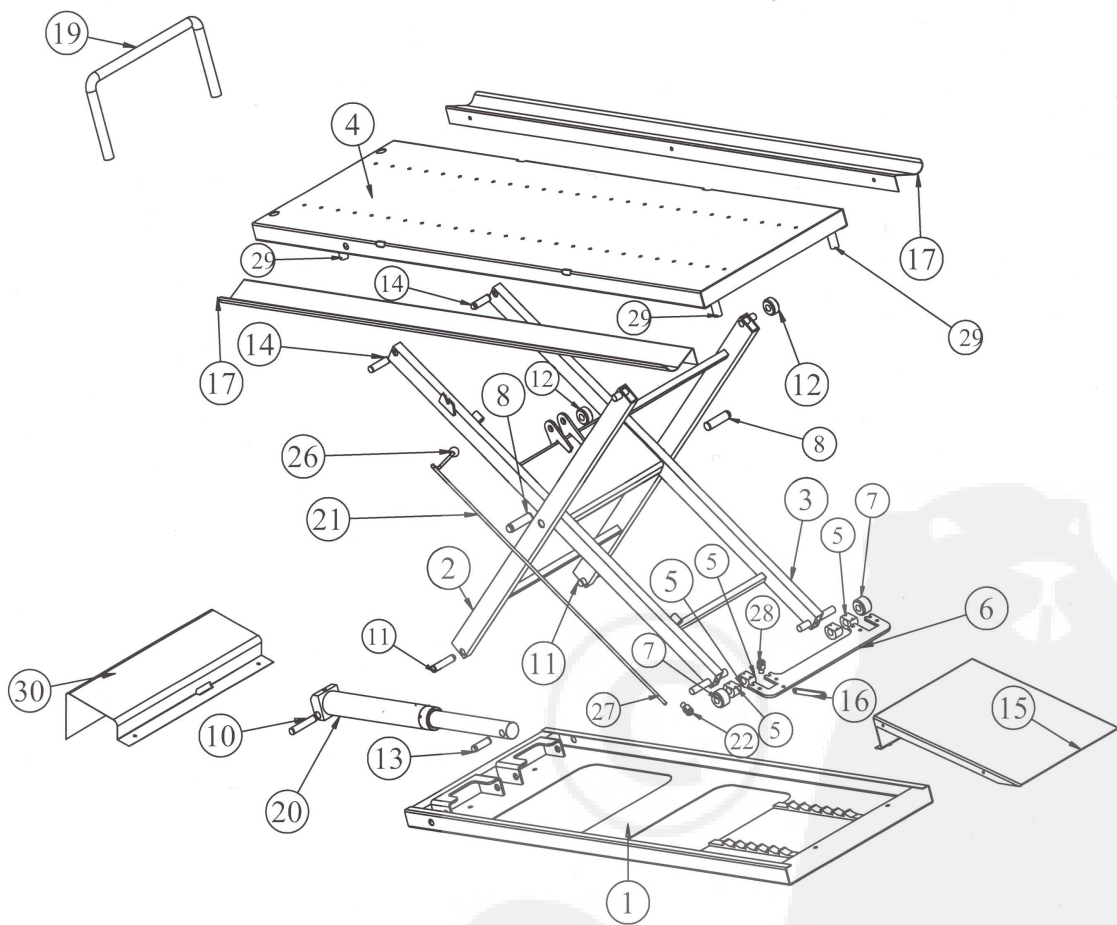
Use only genuine spare parts. Replace only with the same or equivalent type recommended by the Manufacturer.

Regular maintenance will also ensure a long service life.

CAUTION: Replacing spare parts will charge the shipping costs to the Purchaser.



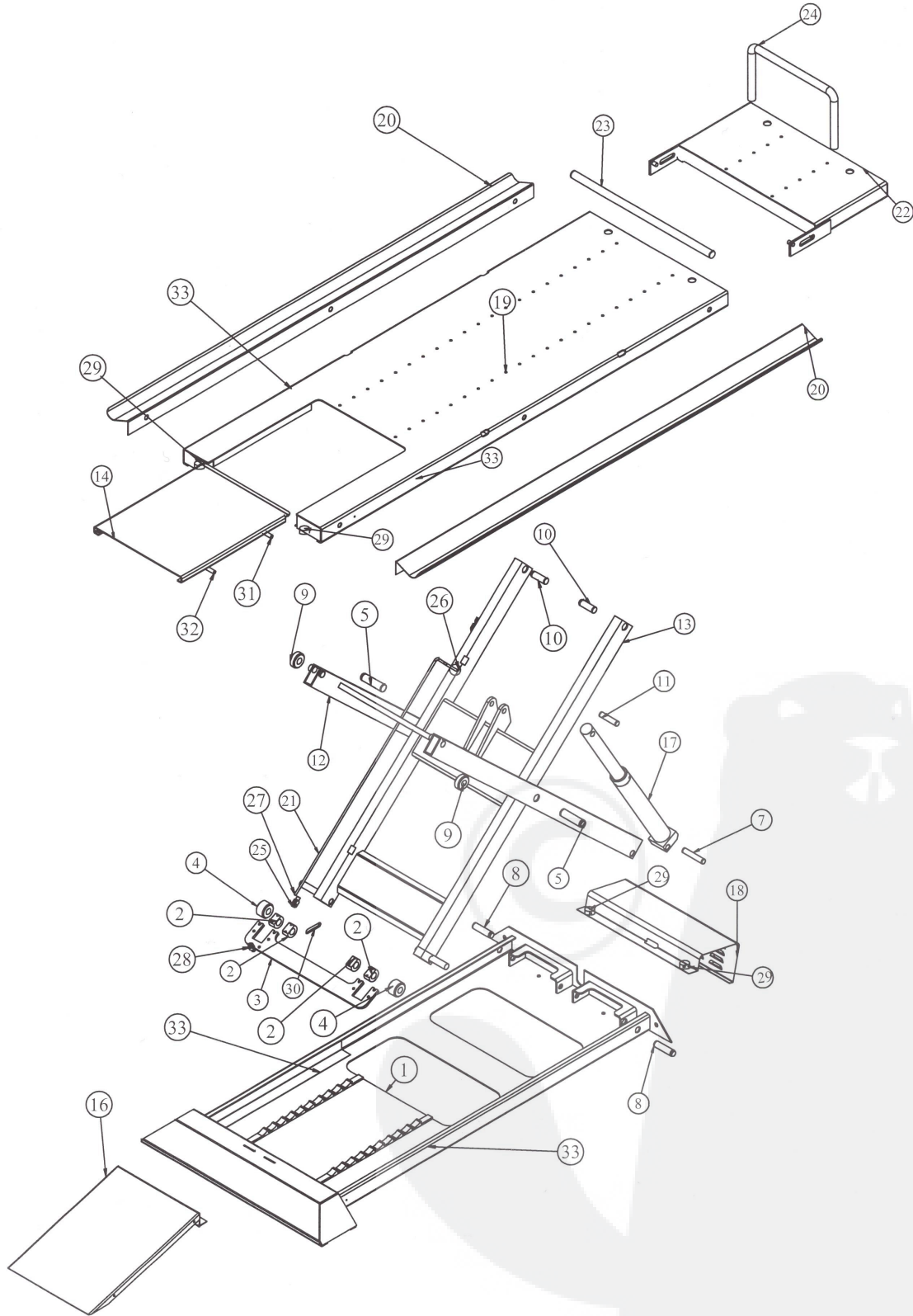
BIKE-LIFT RACING 350



BIKE-LIFT RACING 350

POSITION	DESCRIPTION	ITEM NUMBER	QUANTITY
1	Basic Frame	250601	1
2	External scissor	250602	1
3	Internal scissor	250603	1
4	Tabletop	250604	1
5	Safety bar fastening bearing	500611	4
6	Safety bar	250605	1
7	PVC lower bearing	250612	2
8	Scissor center pin	250609	2
10	Cylinder lower pin	500607	1
11	External scissor lower pin	250615	2
12	PVC upper pin	500616	2
13	Cylinder upper pin	250608	2
14	Internal scissor upper pin	500614	1
15	Ramp	250606	1
16	Forks connecting lever	500613	1
17	Side safety wings	250617	2
19	Front safety bar	750633	1
20	Cylinder	500624	1
21	Safety bar	250618	1
22	Long Safety bar fork	C0001	1
26	Safety bar knob	C0002	1
27	Safety bar spring	C0003	1
28	Short safety bar fork	C0004	1
29	Rubber spacers	C0007	4
30	Engine casing	250824	1

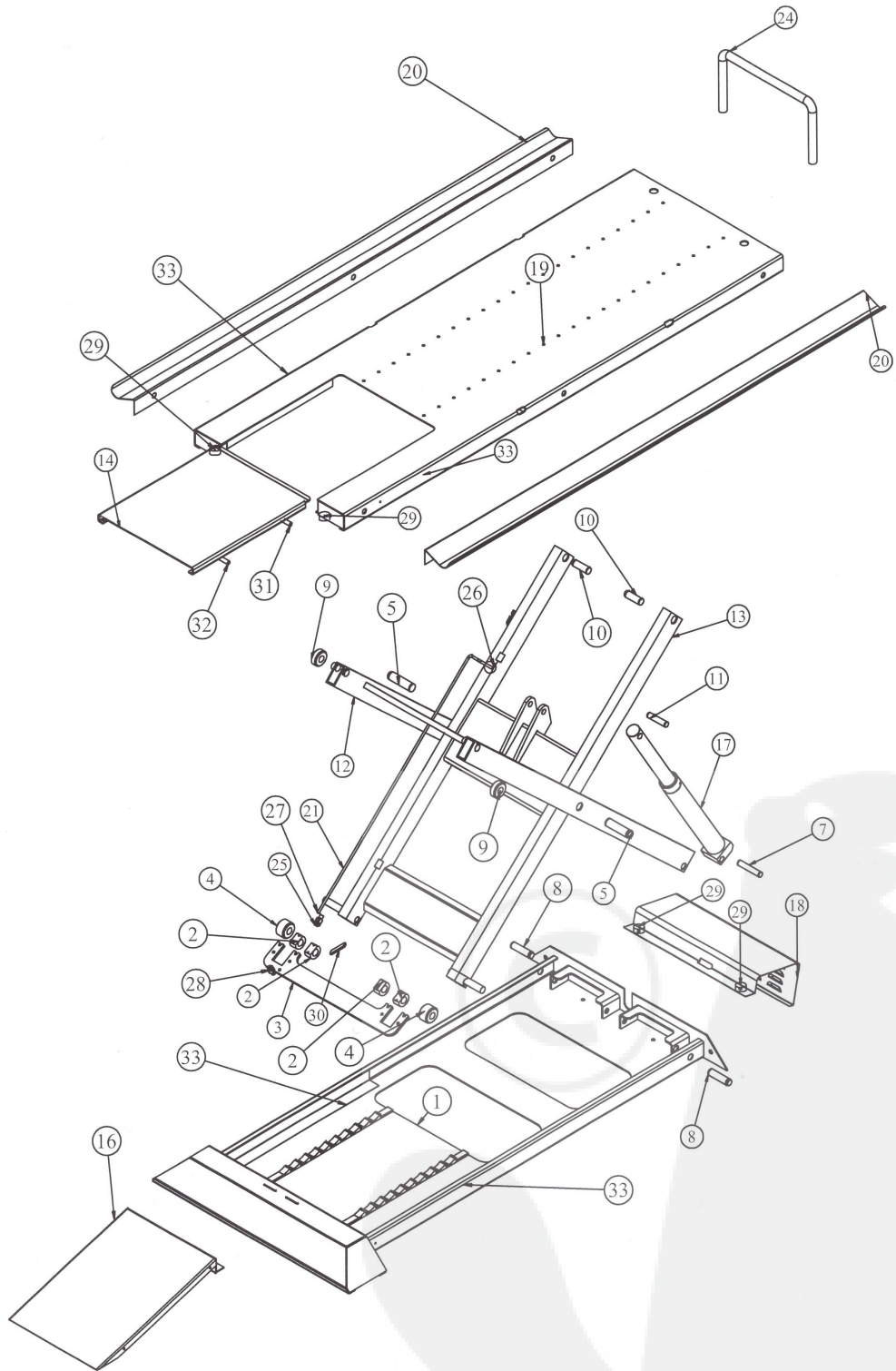
BIKE-LIFT SPORT 500



BIKE-LIFT SPORT 500

POSITION	DESCRIPTION	ITEM NUMBER	QUANTITY
1	Basic Frame	350601	1
2	Safety bar fastening bearing	500611	4
3	Safety bar	350605	1
4	PVC lower bearing	500612	2
5	Scissor center pin	750609	2
7	Cylinder lower pin	500607	1
8	External scissor lower pin	500615	2
9	PVC upper bearing	500616	2
10	Internal scissor upper pin	500614	2
11	Cylinder upper pin	500614	1
12	External scissor	350602	1
13	Internal scissor	350602	1
14	"Gate"	350617	1
16	Ramp	500606	1
17	Cylinder	500624	1
18	Engine casing	350625	1
19	Tabletop	350618	1
20	Side safety wings "Gate"	350617	2
20	Side safety wings "Split"	350625	2
21	Safety bar	500618	1
22	"Split"	350901	1
23	"Split" pin	350857	1
24	Front safety bar	750633	1
25	Long safety bar fork	C0001	1
26	Safety bar knob	C0002	1
27	Safety bar spring	C0003	1
28	Short safety bar fork	C0004	1
29	Spacers	750856	4
30	Forks connecting lever	500613	1
31	Long "Gate" screw	C0005	2
32	Short "Gate" screw	C0006	2
33	Inoxidizable "C" plate	350833	4

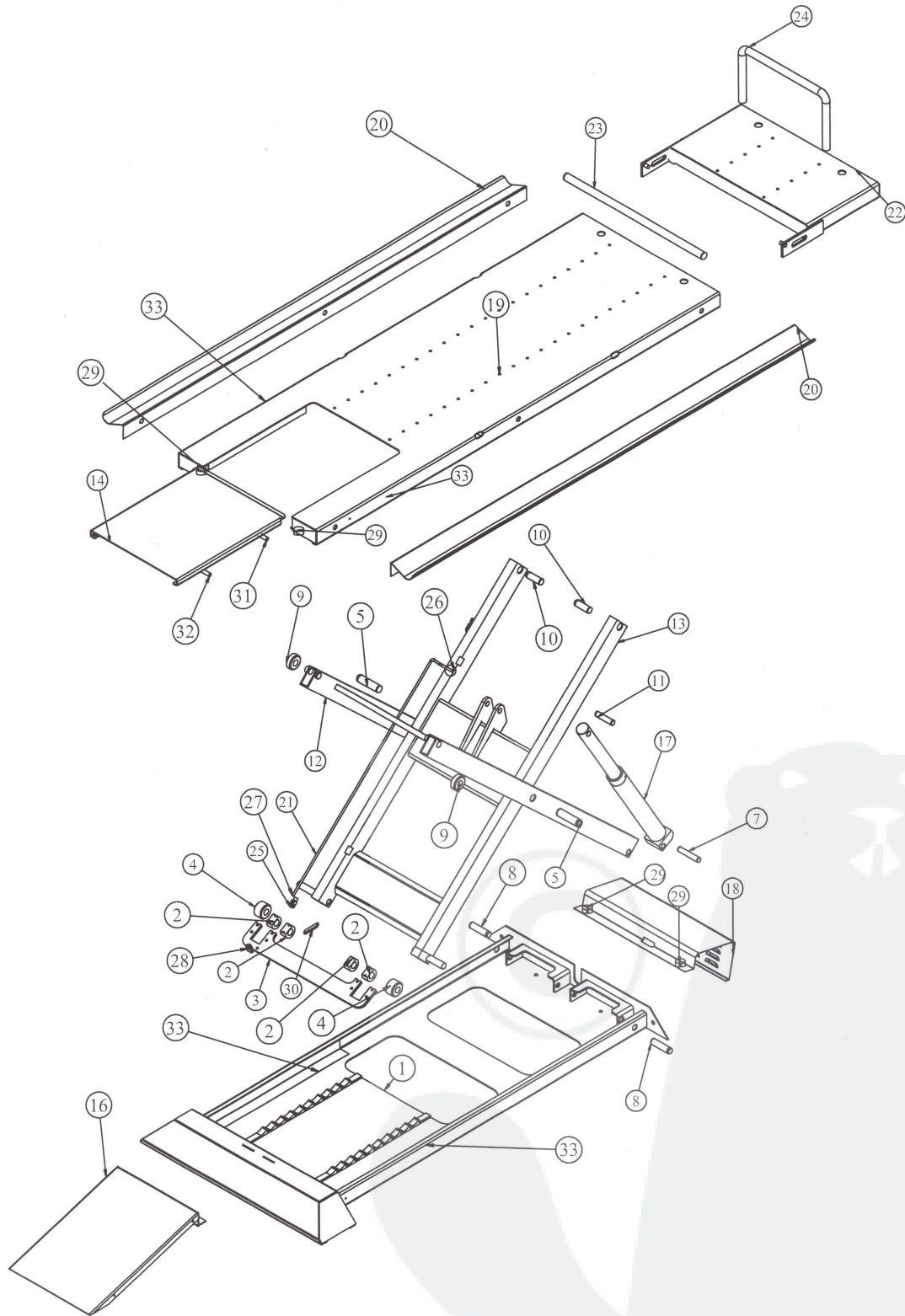
BIKE-LIFT MAX 500



BIKE-LIFT MAX 500

POSITION	DESCRIPTION	ITEM NUMBER	QUANTITY
1	Basic Frame	500601	1
2	Safety bar fastening bearing	500611	4
3	Safety bar	500605	1
4	PVC lower bearing	500612	2
5	Scissor center pin	750609	2
7	Cylinder lower pin	500607	1
8	External scissor lower pin	500615	2
9	PVC upper bearing	500616	2
10	Internal scissor upper pin	500614	2
11	Cylinder upper pin	500614	1
12	External scissor	500602	1
13	Internal scissor	500603	1
14	"Gate"	500617	1
16	Ramp	500606	1
17	Cylinder	500624	1
18	Engine casing	500625	1
19	Tabletop	500619	1
20	Side safety wings	500624	2
21	Safety bar	750622	1
24	Front safety bar	750633	1
25	Long safety bar fork	C0001	1
26	Safety bar knob	C0002	1
27	Safety bar spring	C0003	1
28	Short safety bar fork	C0004	1
29	Spacers	750856	4
30	Forks connecting lever	500613	1
31	Long "Gate" screw	C0005	2
32	Long "Gate" screw	500613	2
33	Inoxidizable "C" plate	350833	4

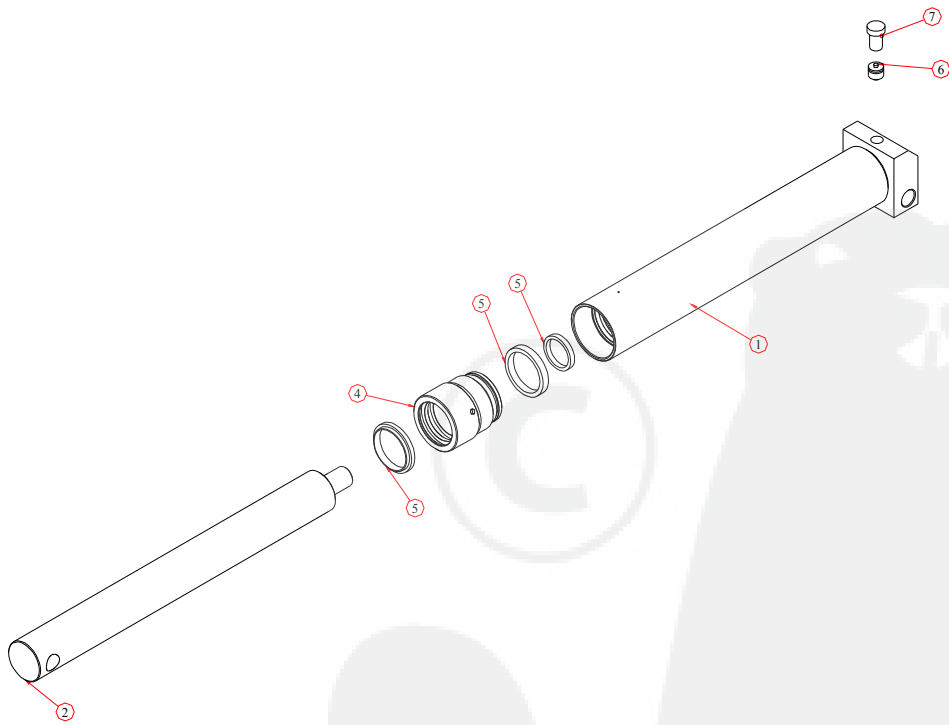
BIKE-LIFT CRUISER 750



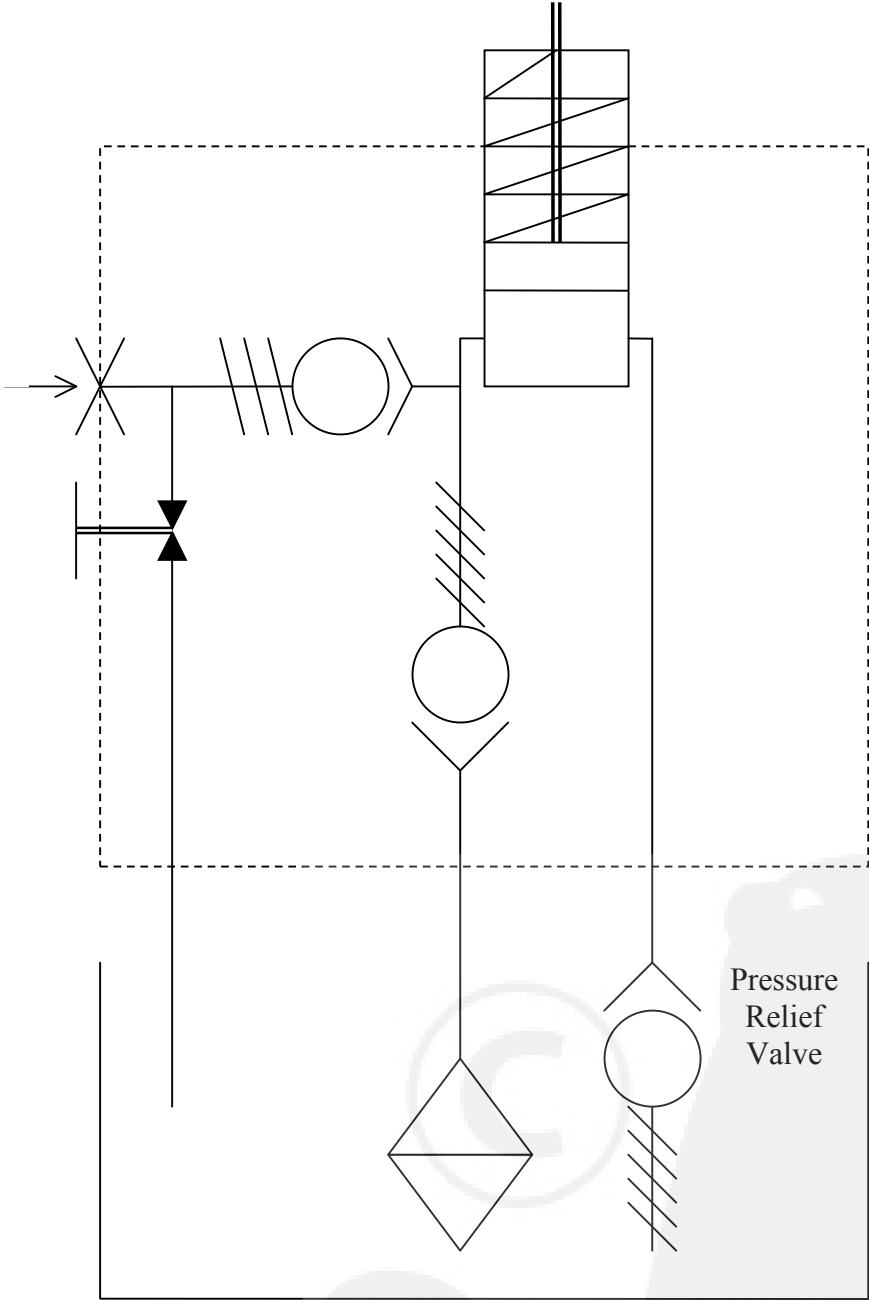
BIKE-LIFT CRUISER 750			
POSITION	DESCRIPTION	ITEM NUMBER	QUANTITY
1	Basic Frame	750601	1
2	Safety bar fastening bearing	750611	4
3	Safety bar	750605	1
4	PVC lower bearing	750612	2
5	Scissor center pin	750609	2
7	Cylinder lower pin	750607	1
8	External scissor lower pin	750615	2
9	PVC upper bearing	750616	2
10	Internal scissor upper pin	750608	2
11	Cylinder upper pin	750614	1
12	External scissor	750602	1
13	Internal scissor	750603	1
14	"Gate"	750618	1
16	Ramp	750606	1
17	Cylinder	750624	1
18	Engine casing	750625	1
19	Tabletop	750628	1
20	Side safety wings "Gate"	750617	2
20	Side safety wings "Split"	750632	2
21	Safety bar	750622	1
22	"Split"	750901	1
23	"Split" pin	750857	1
24	Front safety bar	750633	1
25	Long safety bar fork	C0001	1
26	Safety bar knob	C0002	1
27	Safety bar spring	C0003	1
28	Short safety bar fork	C0004	1
29	Spacers	750856	4
30	Forks connecting lever	500613	1
31	Long "Gate" screw	C0005	2
32	Short "Gate" screw	C0006	2
33	Inoxidizable "C" plate	750824	4

CYLINDER

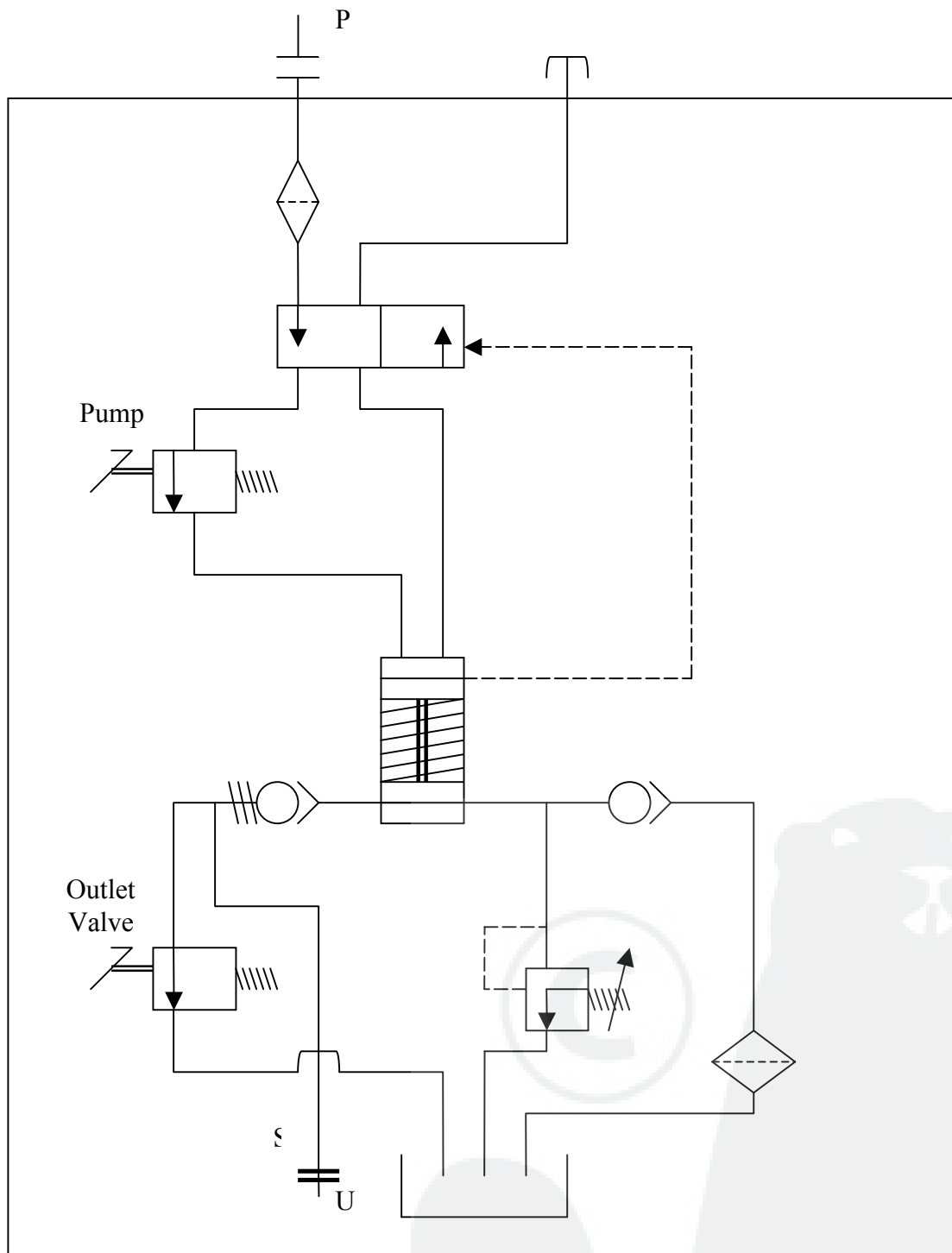
POSITION	DESCRIPTION	QUANTITY
1	Cylinder pipe	1
2	Cylinder rod	1
4	Cylinder head	1
5	Gaskets kit	1
6	Fall-proof valve	1
7	Nipples	1



HYDRAULIC SCHEME: FOOT PUMP



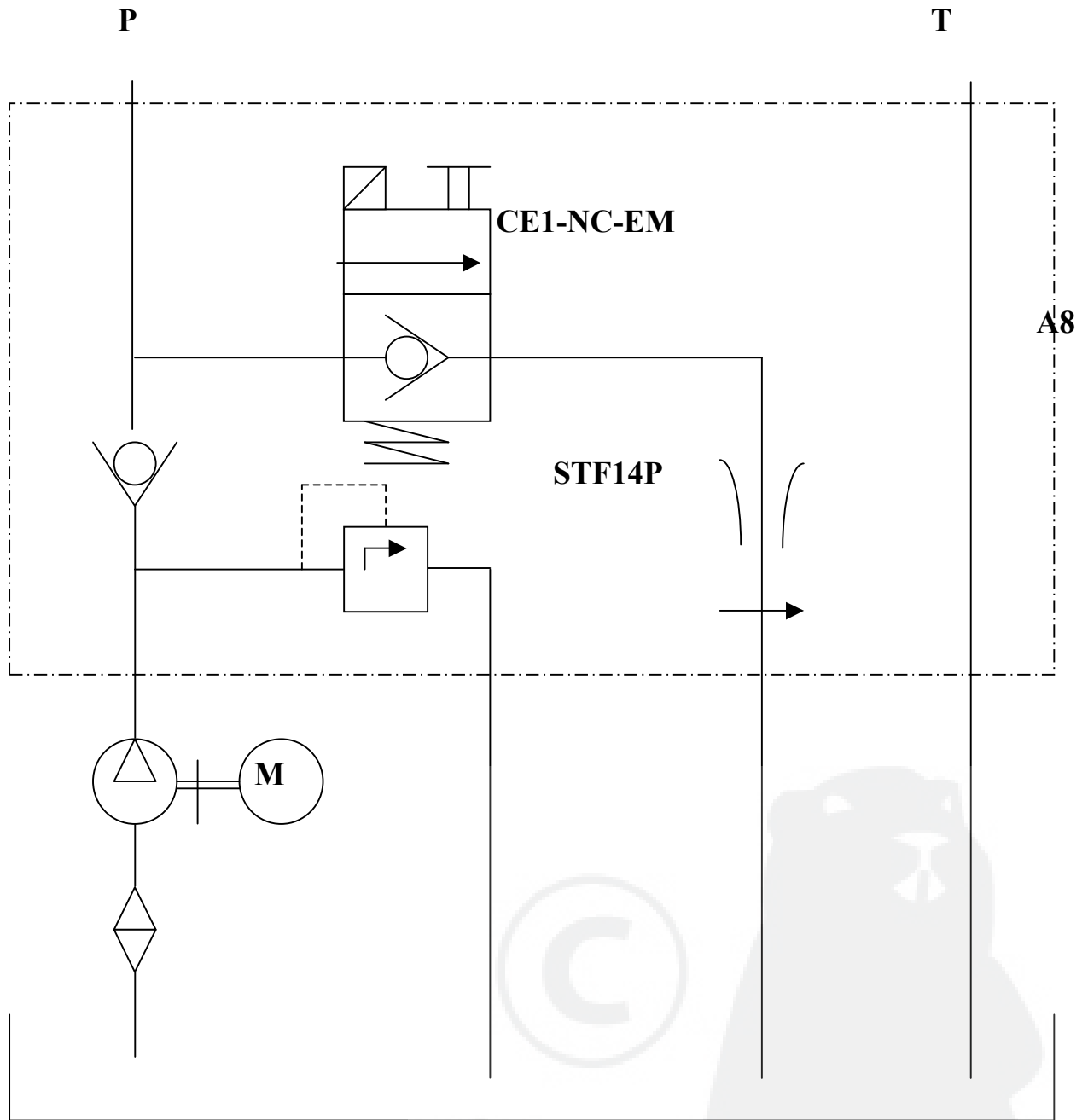
HYDRAULIC SCHEME: HYDRO-PNEUMATIC PUMP



OPERATION SCHEME

P = Air Inlet; U = Oil Outlet ; S = Oil Tank

HYDRAULIC SCHEME: ELECTRO-HYDRAULIC PUMP



ELECTRIC SCHEME : ELECTRO-HYDRAULIC PUMP

