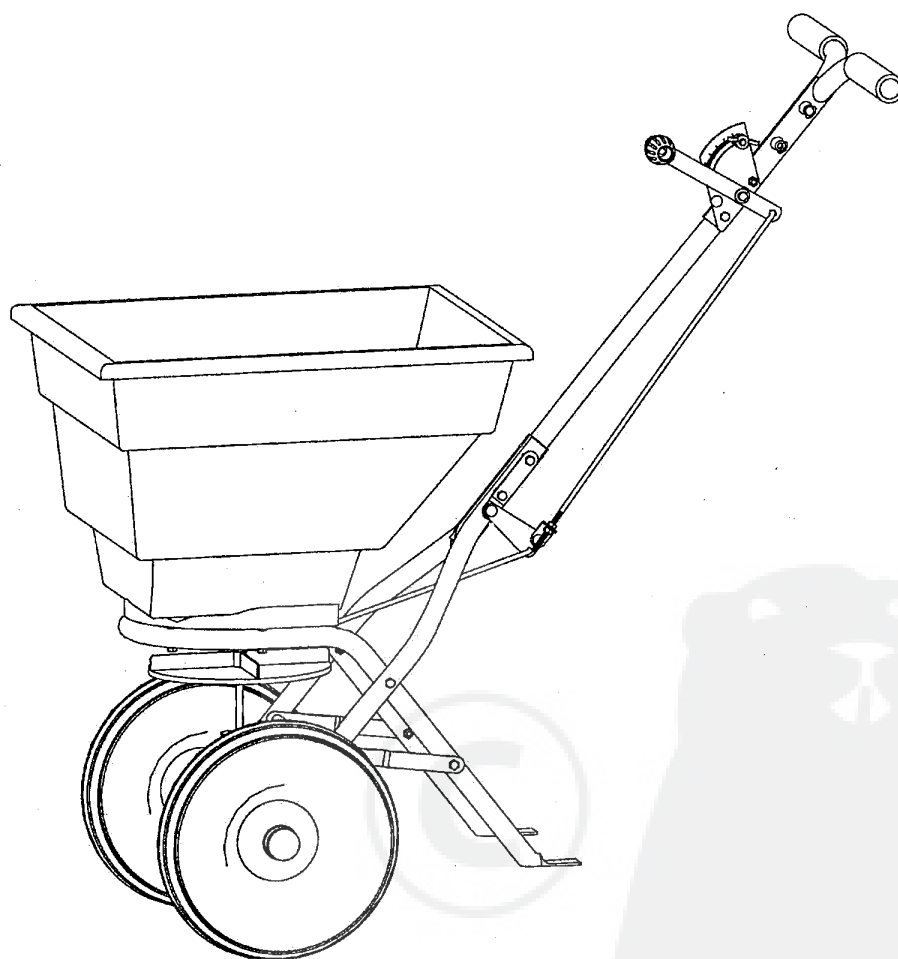
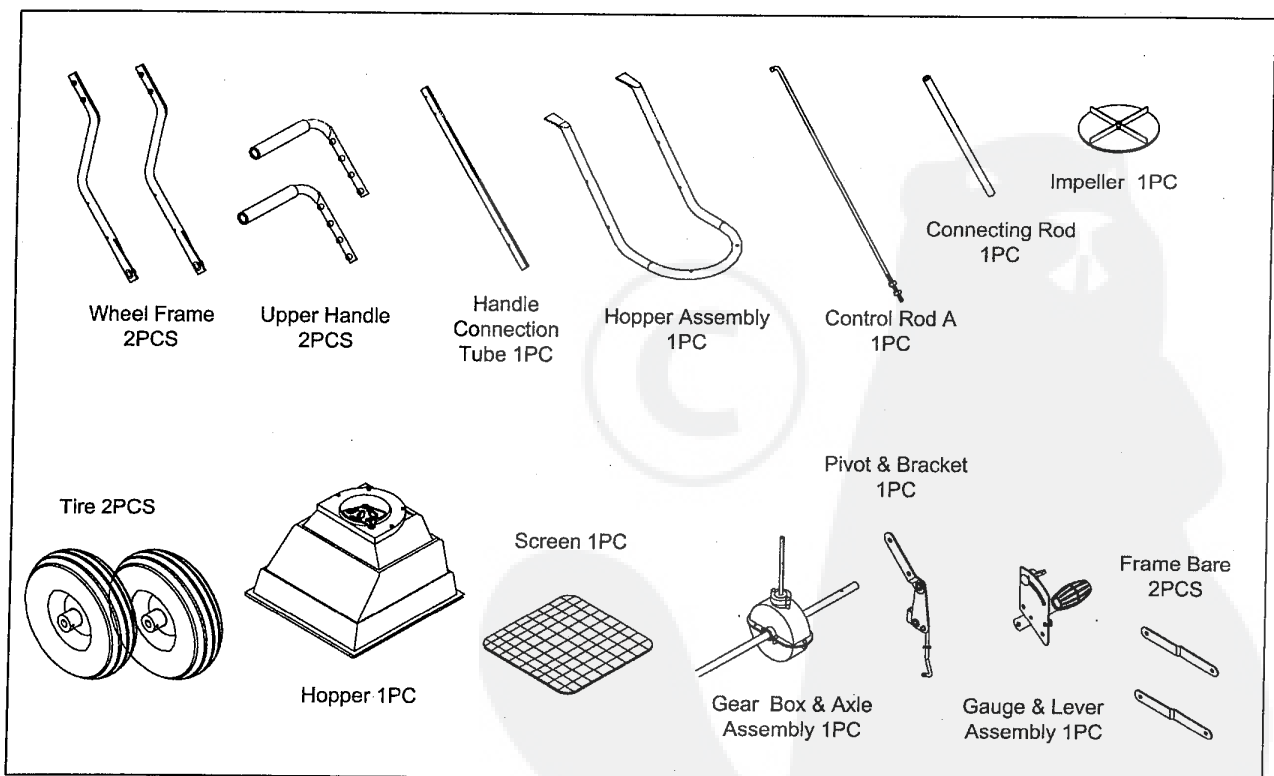
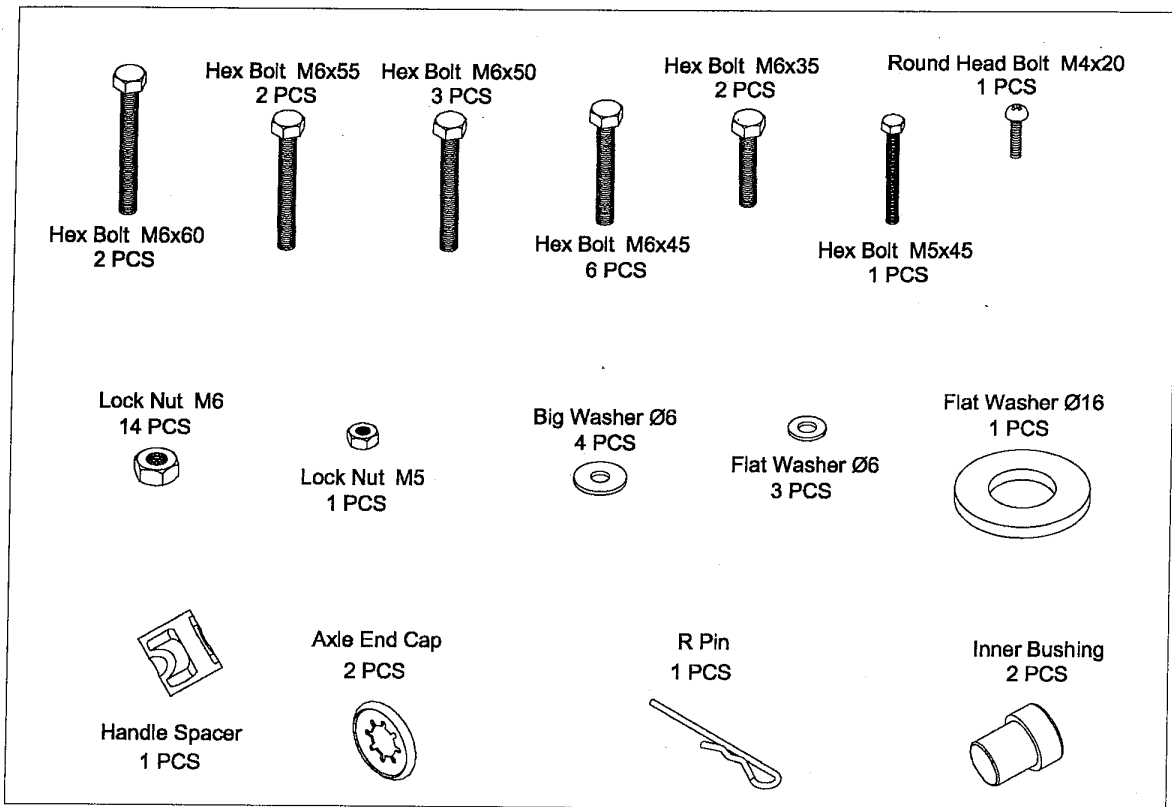

100LB<45KG> WALK-BEHIND SPREADER

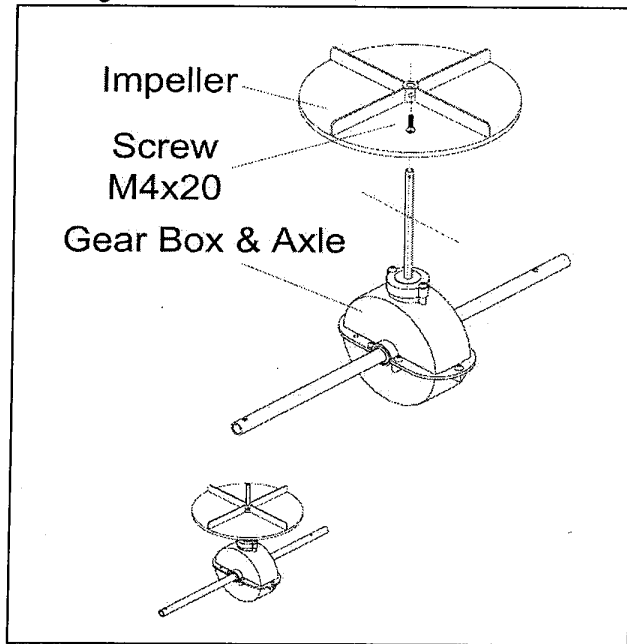


ASSEMBLY AND OPERATING INSTRUCTION

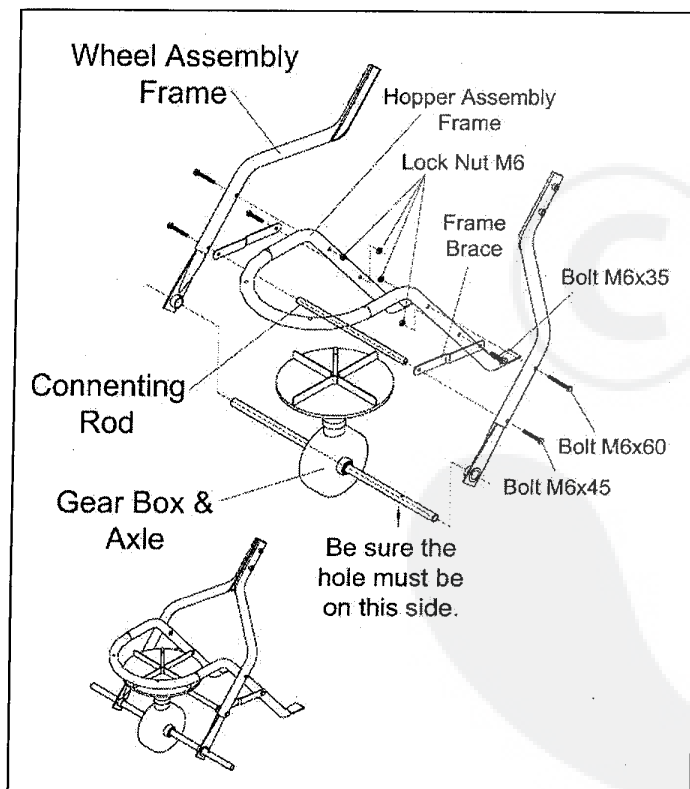
Remove and identify loose parts from carton and bag.



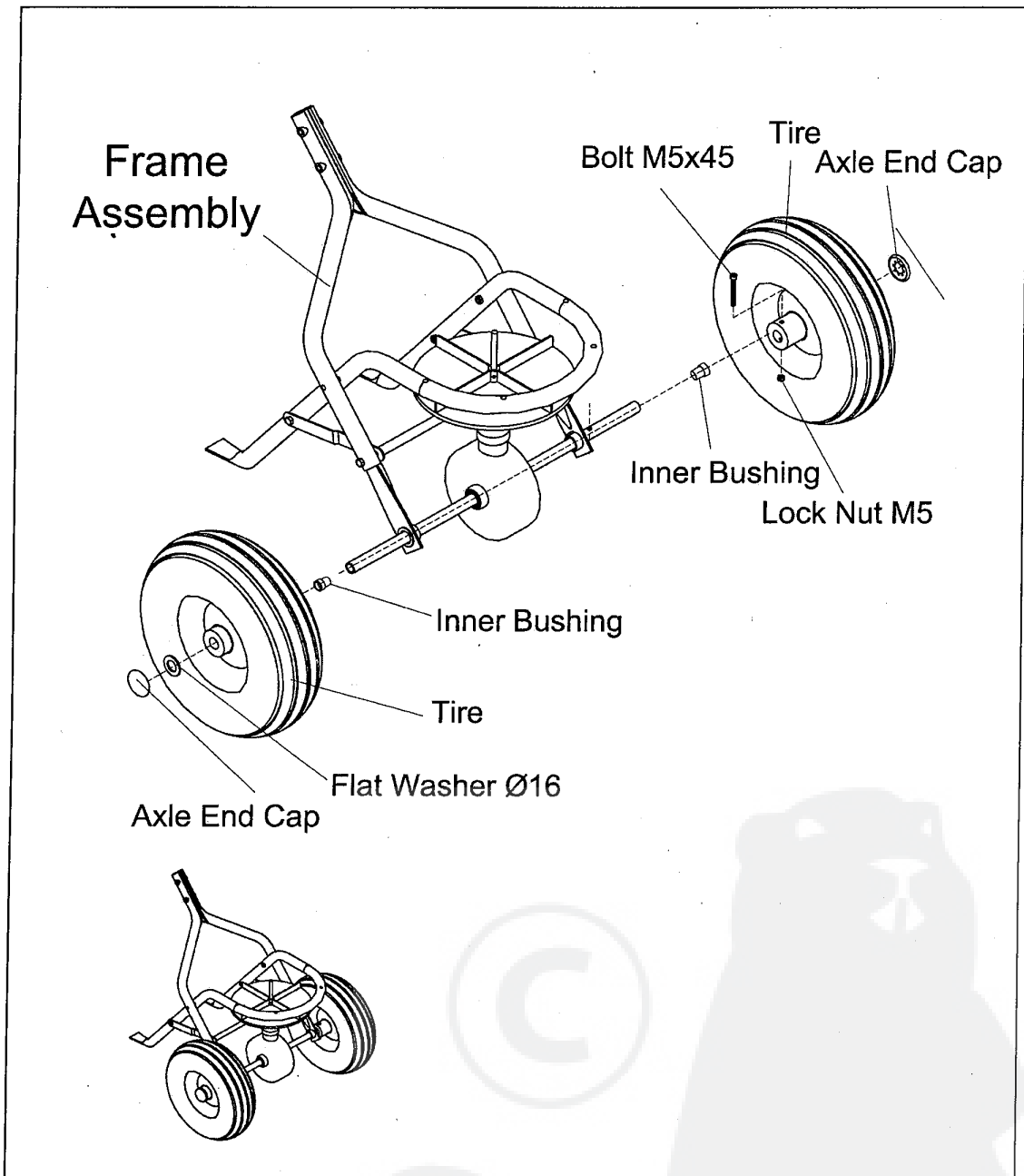
STEP 1: Install impeller onto the Gear Box & Axle Assembly. Insert Screw M4x20 through impeller then through Gear Box Axle.



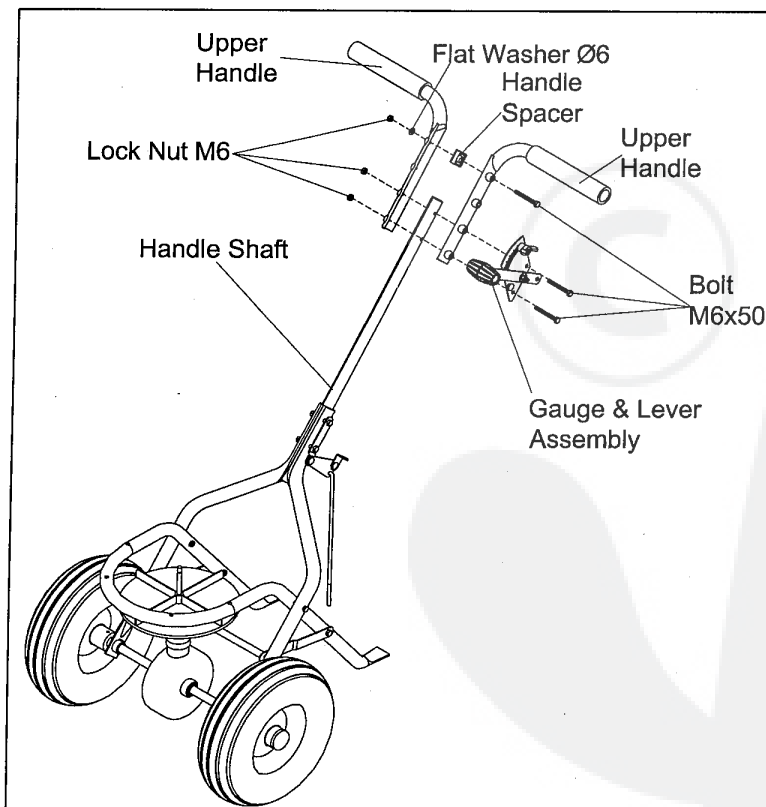
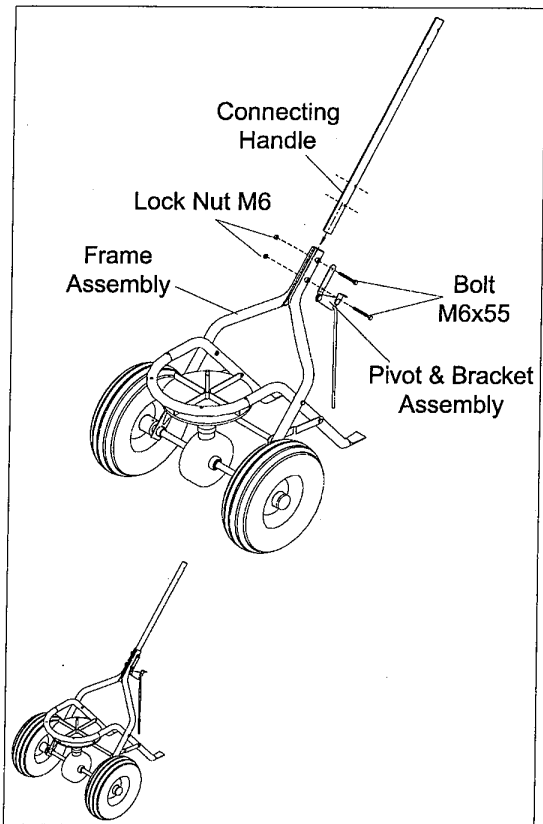
STEP 2: Install Wheel Assembly Frame on each side of the Gear Box Axle. Make sure the hole on Axle of Gear Box is to be on the right side when assembly as shown. Attach one end of Frame Brace to Hopper Frame Assembly using bolts M6x35 and lock nuts M6. Insert two bolts M6x45 into the Connecting Cross Rod through wheel Assembly Frames and Frame Braces. And then insert bolts M6x60 through Wheel Assembly Frames onto Hopper Frame Assembly, put on lock nuts M6. needn't be tightened yet.



STEP 3: Insert Inner Axle Bushing into Outer Axle Bushing and make sure they are tight neatly. Install right Tire Assembly to right Axle using bolt M5x45 and lock nut M5, and then install the Cap onto right Axle using a wooden or rubber hammer. Now install left Tire Assembly to left Axle, put a flat washer $\varnothing 16$ and install the Cap onto left Axle using a wooden or rubber hammer.

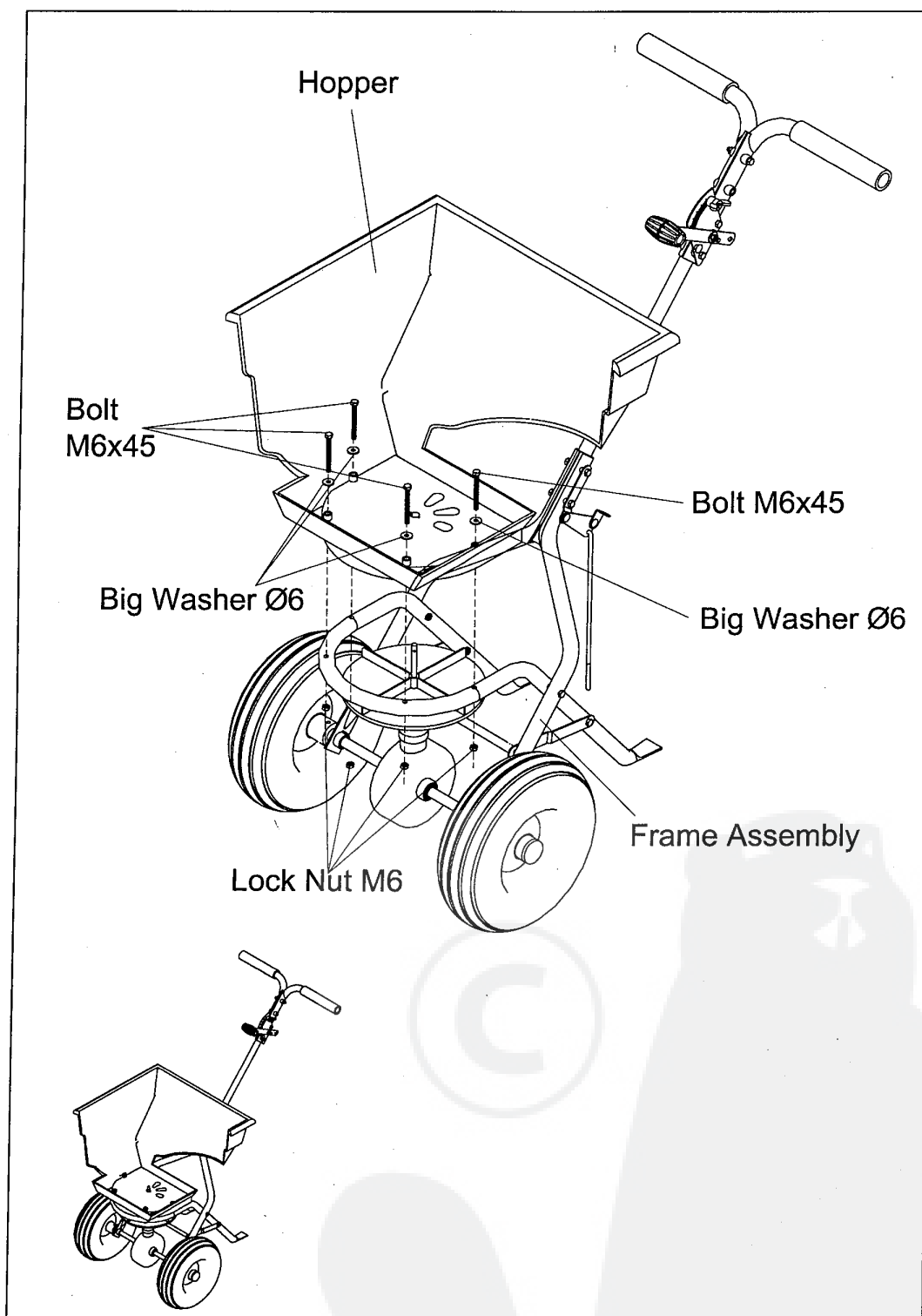


STEP 4: Put the Middle Connecting Handle between two Lower Handles of Wheel Frame Assembly, and then attach the Pivot & Bracket Assembly to the Lower Handles of Wheel Frame Assembly using bolts M6x55 and Lock Nuts M6. **NOW GO BACK AND TIGHTEN ALL NUTS AND BOLTS STARTING WITH FIRST STEP. DO NOT OVER TIGHTEN.**

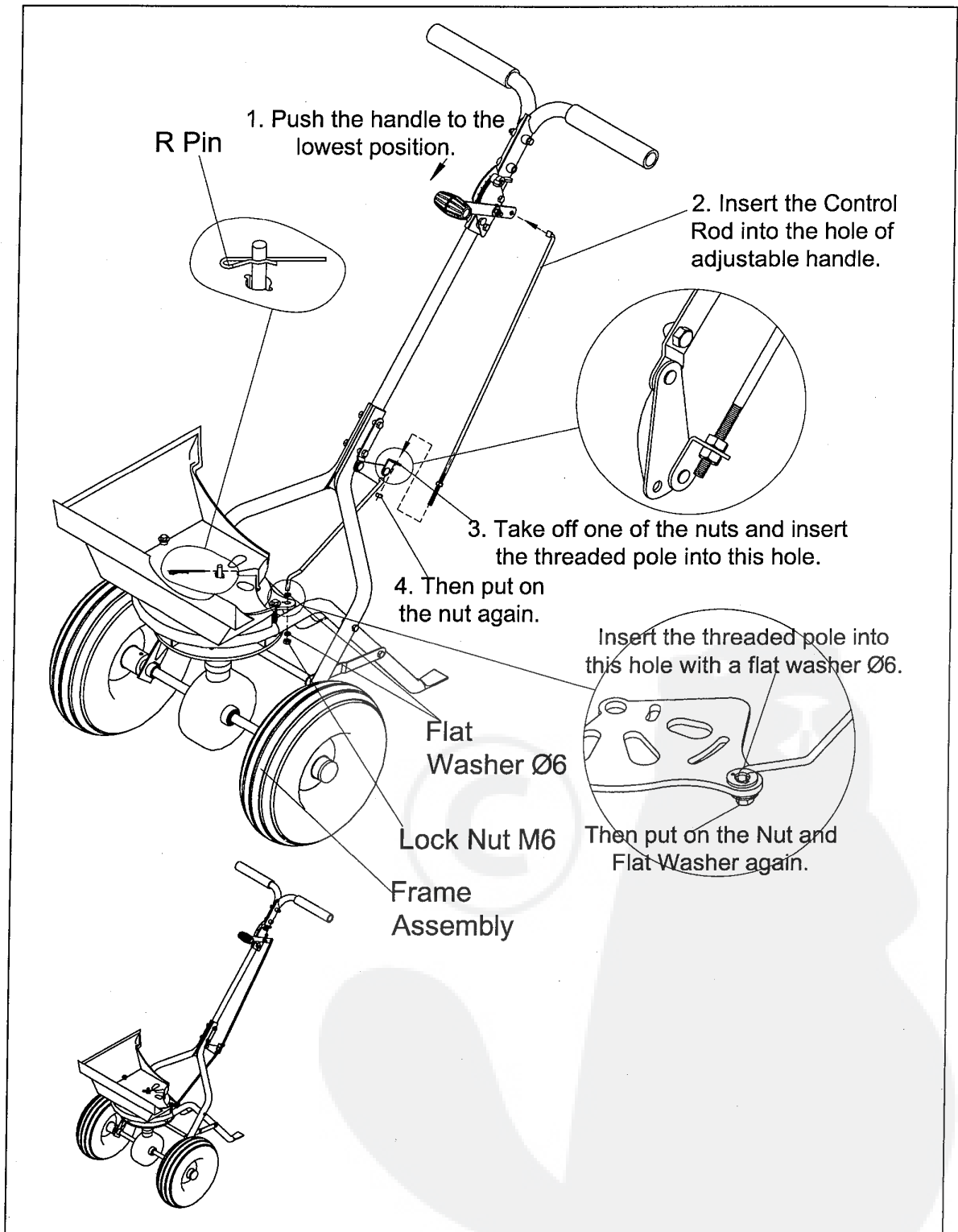


STEP 5: Before installing the gauge and upper handles and handle shaft, upper handles feature three positions for operator's comfort. If operator chooses middle or upper positions, use Handle spacer in hole nearest to handle grips. Insert bolt M6X50 through upper handle, then through handle spacer Through other upper handle. **DO NOT TIGHTEN LOCK NUT YET. TIGHTEN THIS NUT LAST.** Install gauge & lever using bolt. Be sure gauge is on left hand side. **Tighten lock nuts to gauge first. TIGHTEN NOW.**

STEP 6: Install the Hopper onto Hopper Frame Assembly using bolts M6x45, lock nuts M6 and big washer Ø6.

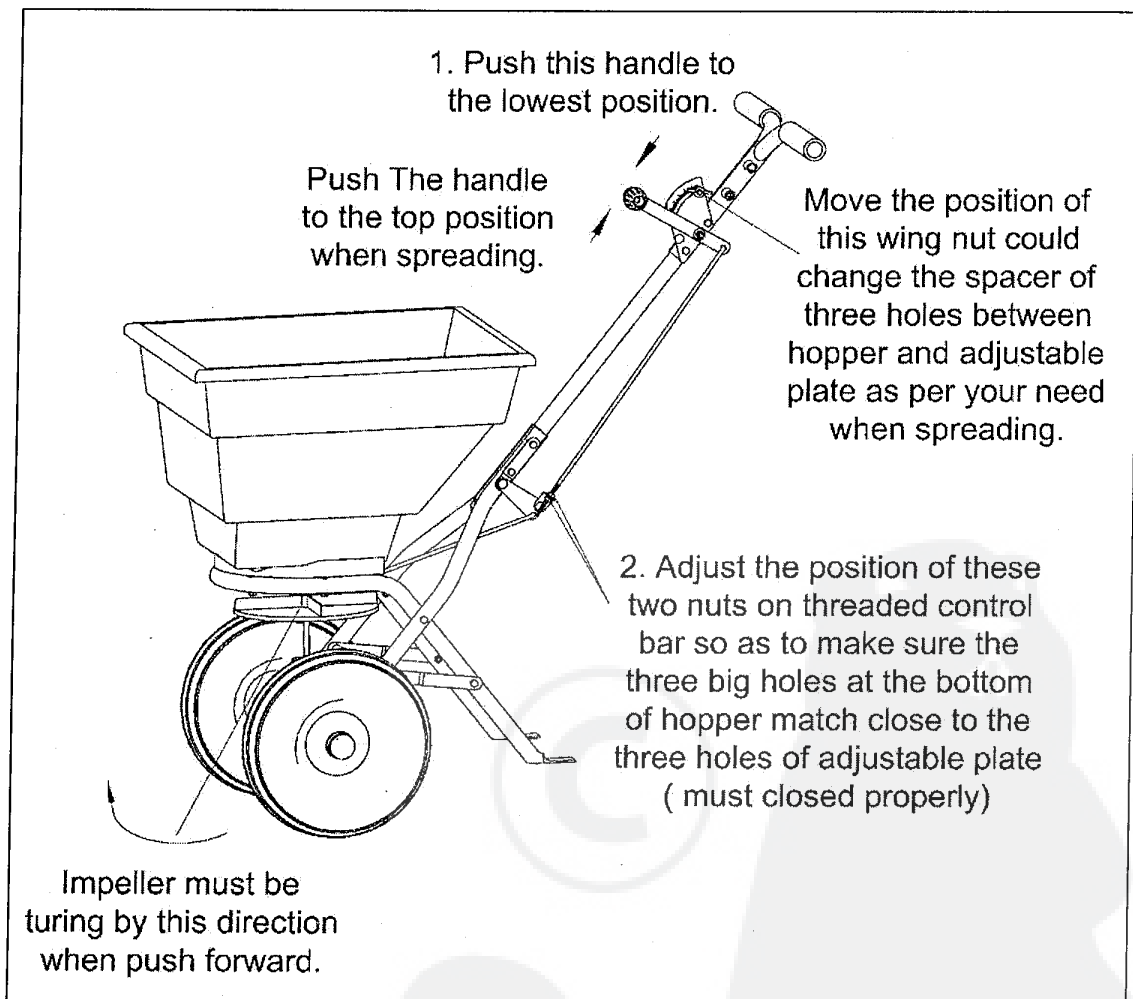


STEP7: (1) Push the handle to the lowest position. (2) Insert the upper end of Control Rod into the hole of Adjustable Handle. (3) Take off one of nuts from threaded pole and insert the threaded pole into the hole of Pivot & Bracket.(4) Then put on the nut again. (5) Insert the threaded pole of Adjustable Pole B into the hole of Adjustable Plate with a Flat Washer Ø6, and then put the lock nut M6 and Flat Washer Ø6. (6) Insert R Pin into the hole of turning axle at the bottom of hopper as shown.

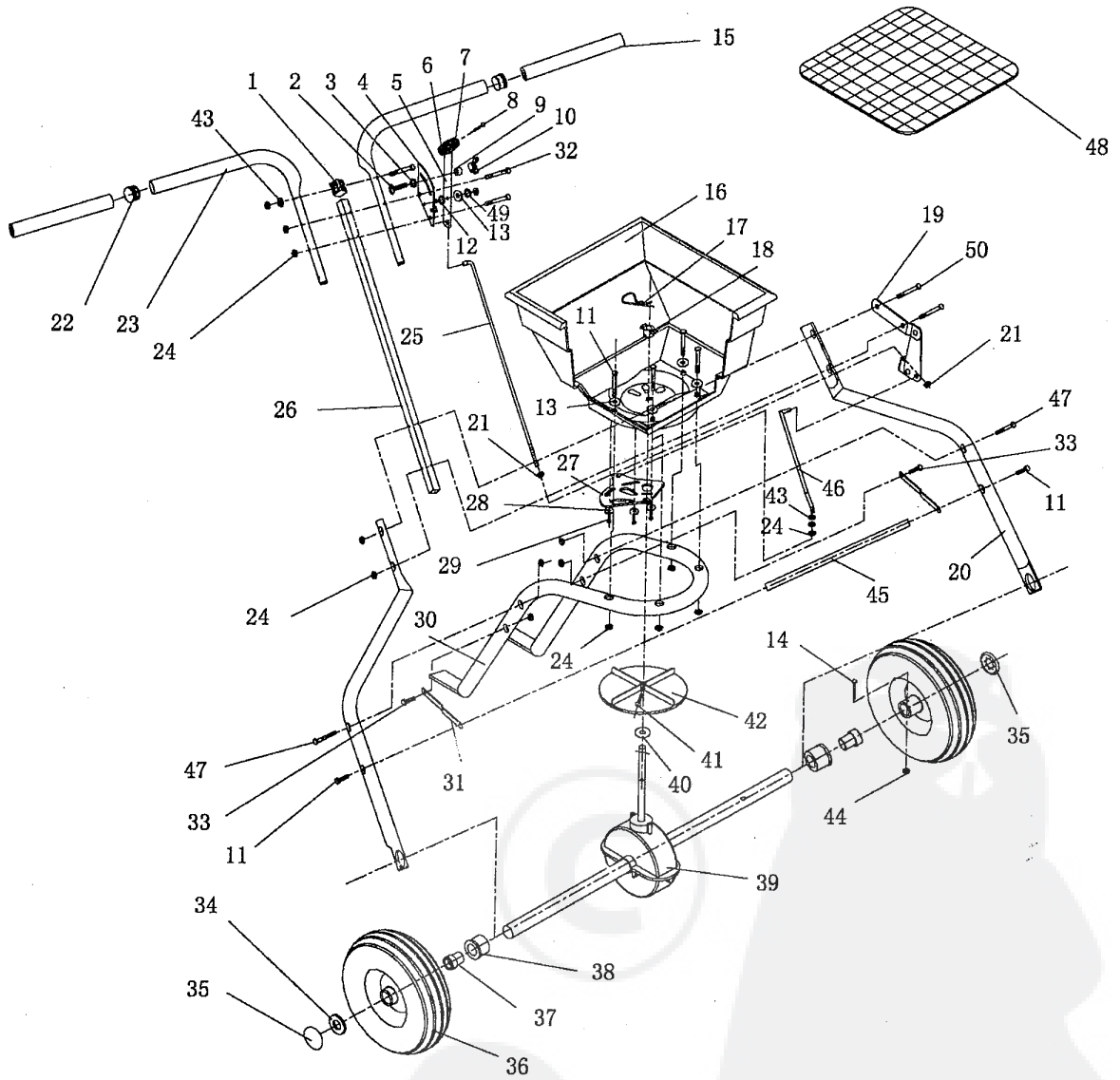


STEP 8: ADJUSTABLE. When you finished all above steps, if you find the three big holes at the bottom of hopper just match the three holes of adjustable plate. You don't need to do the following steps. If they are not match neatly, you may need to do the following steps. (1) Push the handle to the lowest position <downwards>. (2) Adjust the positions of these two nuts on threaded control bar so as to make sure the three big holes at the bottom of hopper match close to the three holes of adjustable plate (must closed properly).

To operate this spreader, push the handle to the top position (upwards). You may move the position of the Wing nut on Gauge & Lever to adjust the spacer of three holes between hopper and adjustable plate as per your need when spreading.



PARTS DRAWING



PARTS LIST

Ref#	Description	Qty	Ref#	Description	Qty
1	Handle Spacer	1	26	Middle Connecting Handle	1
2	Carriage Bolt M6x25	1	27	Shut off plate	1
3	Teeth Lock Washer Ø8	1	28	Big Flat Washer Ø4	3
4	Gauge & Lever Assembly	1	29	Screw M4x12	3
5	Adjustable Handle Pole	1	30	Hopper Assembly Frame	1
6	Adjustable Handle A	1	31	Frame Brace	2
7	Adjustable Handle B	1	32	Hex Bolt M6X50	3
8	Screw M4x18	1	33	Hex Bolt M6X35	2
9	Spacer	1	34	Flat Washer Ø16	1
10	Wing Nut M6	1	35	End Cap	2
11	Hex Bolt M6x45	6	36	Tire	2
12	Nylon Washer	1	37	Inner Axle Bushing	2
13	Big Flat Washer Ø6	5	38	Outer Axle Bearing	2
14	Hex Bolt M5x45	1	39	Gear Box & Axle Assembly	1
15	Handle Cover	2	40	Thin Washer	1
16	Hopper	1	41	Screw M4x20	1
17	R Pin Ø2	1	42	Impeller	1
18	Hopper Bushing	1	43	Flat Washer Ø6	3
19	Pivot & Bracket Assembly	1	44	Lock Nut M5	1
20	Wheel Assembly Frame	2	45	Connecting Cross Bar	1
21	Hex Nut M6	2	46	Adjustable Connecting Rod B	1
22	End Cover	2	47	Hex Bolt M6x60	2
23	Upper Handle	2	48	Screen	1
24	Lock Nut M6	15	49	Lock Washer Ø6	1
25	Control Rod A	1	50	Hex Bolt M6x55	2