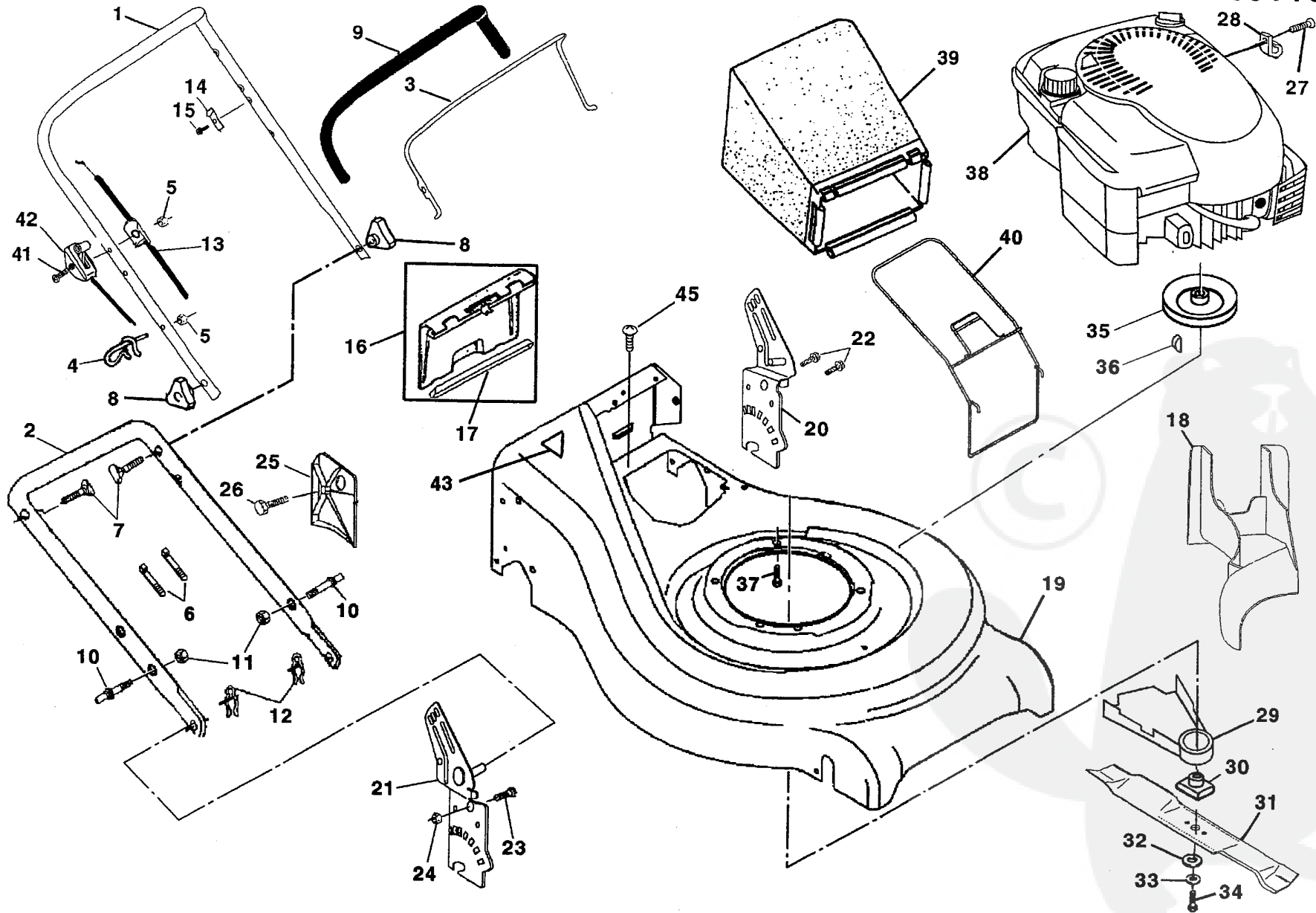


REPAIR PARTS MANUAL
MODEL NUMBER RE621CG
Rotary Lawn Mower

Rally

ROTARY LAWN MOWER -- MODEL NUMBER RE621C (RE621CG) - PRODUCT NUMBER 964 79 44-00



ROTARY LAWN MOWER - - MODEL NUMBER RE621C (RE621CG) - PRODUCT NUMBER 964 79 44-00

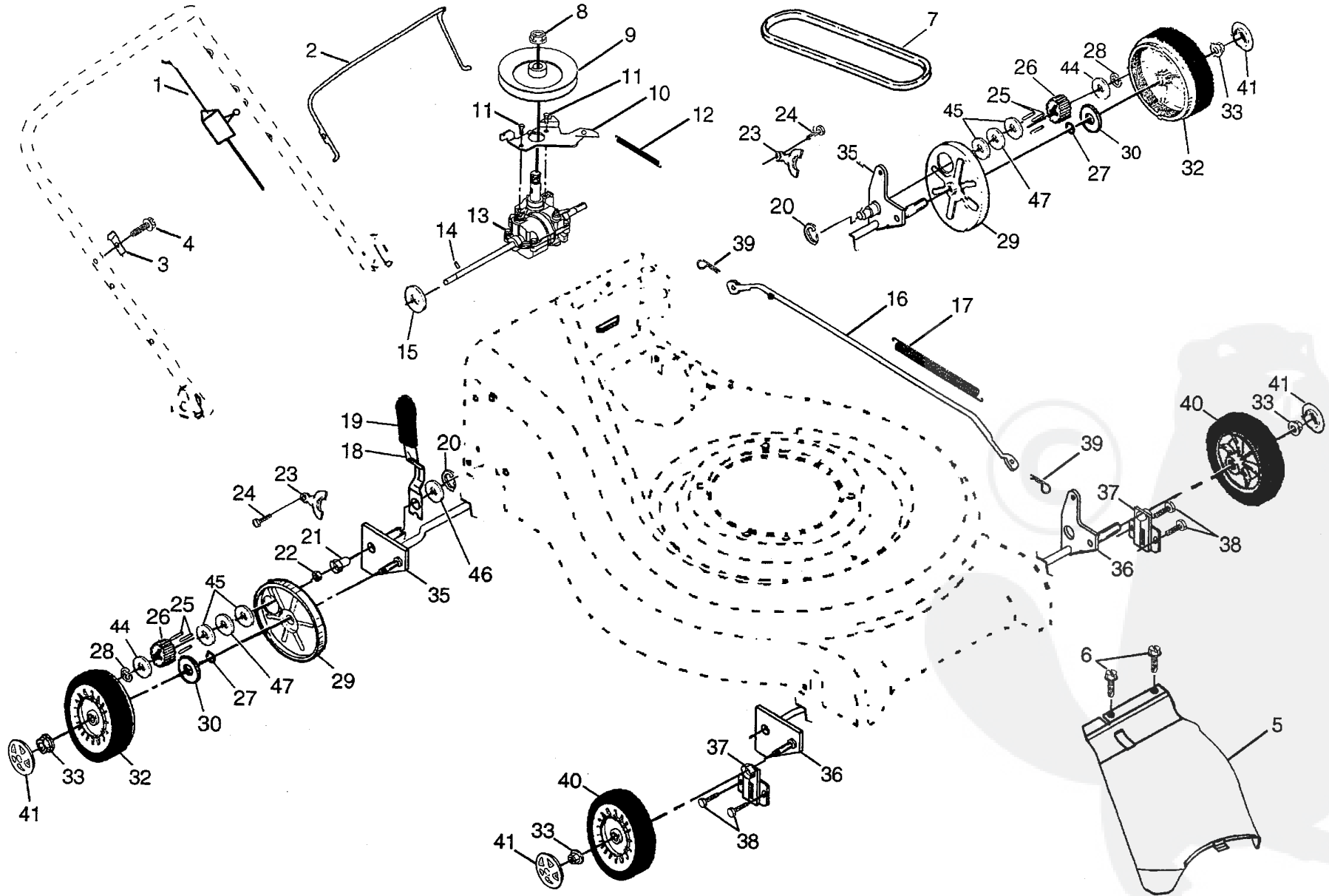
3

| KEY NO. | PART NO. | DESCRIPTION |
|---------|---------------------|--|
| 1 | 532 16 71-63 | Handle, Upper |
| 2 | 532 16 45-56 | Handle, Lower |
| 3 | 532 13 10-36 | Bar, Control |
| 4 | 532 17 95-85 | Guide, Rope |
| 5 | 532 13 20-04 | Nut, Hex, with Lockwasher Insert 1/4-20 |
| 6 | 532 06 64-26 | Wire Tie |
| 7 | 532 13 19-59 | Bolt, Handle 5/16-18 x 1.75 |
| 8 | 532 08 76-92 | Knob, Handle |
| 9 | 532 16 42-65 | Grip, Handle, Foam, Smooth |
| 10 | 532 16 15-51 | Bolt, Carriage |
| 11 | 873 99 05-00 | Nut, Hex, with Lockwasher Insert 5/16-18 UNC |
| 12 | 532 05 17-93 | Cotter, Hairpin |
| 13 | 532 13 31-07 | Cable |
| 14 | 532 12 51-62 | Bracket, Upstop |
| 15 | 532 75 06-34 | Screw, Hex Washer Head, Tapping #10-24 |
| 16 | 532 16 20-85 | Kit, Door, Rear |
| 17 | 532 18 90-59 | Seal, Door |
| 18 | 532 18 27-78 | Plug, Mulcher |
| 19 | 532 16 34-24 | Kit, Housing |
| 20 | 532 16 45-48 | Handle Bracket Assembly, Left |
| 21 | 532 16 93-06 | Handle Bracket Assembly, Right |
| 22 | 532 15 00-78 | Screw, Hex Washer Head |
| 23 | 532 16 31-83 | Bolt, Hex Head 5/16-18 x 5/8 |
| 24 | 873 80 05-00 | Nut, Hex, with Lockwasher Insert 5/16-18 |
| 25 | 532 16 13-33 | Baffle, Side |
| 26 | 532 16 34-09 | Screw #12 x 5/8 |

| KEY NO. | PART NO. | DESCRIPTION |
|---------|---------------------|--|
| 27 | 532 08 38-16 | Screw |
| 28 | 532 11 11-90 | Cable Clamp |
| 29 | 532 18 91-85 | Shield, Debris |
| 30 | 532 18 45-90 | Blade Adapter |
| 31 | 532 17 50-52 | Blade, 21" |
| 32 | 532 85 10-74 | Washer, Hardened |
| 33 | 532 85 02-63 | Lockwasher, Helical Spring 3/8 |
| 34 | 532 85 10-84 | Screw, Hex Head 3/8-24 x 1.38 |
| 35 | 532 18 49-41 | Pulley, Engine |
| 36 | 532 18 77-23 | Key, Hi-Pro |
| 37 | 532 15 04-06 | Bolt, Engine |
| 38 | --- | Engine, Briggs & Stratton, Model Number 12H802 (Order parts from engine manufacturer) |
| 39 | 532 18 36-32 | Grass Bag |
| 40 | 532 18 00-26 | Frame, Grass Bag |
| 41 | 532 18 33-65 | Screw |
| 42 | 532 18 21-54 | Throttle Control |
| 43 | 532 18 21-66 | Decal, Warning, International |
| 44 | 532 18 21-34 | Warning Decal (Not Shown) |
| 45 | 532 05 45-83 | Screw |
| -- | 532 18 55-06 | Operator's Manual, European |
| -- | 532 18 55-07 | Operator's Manual, Scandinavian |
| -- | 532 19 04-43 | Repair Parts Manual, English |

NOTE: All component dimensions given in U.S. inches.
1 inch = 25.4 mm

ROTARY LAWN MOWER -- MODEL NUMBER RE621C (RE621CG) - PRODUCT NUMBER 964 79 44-00

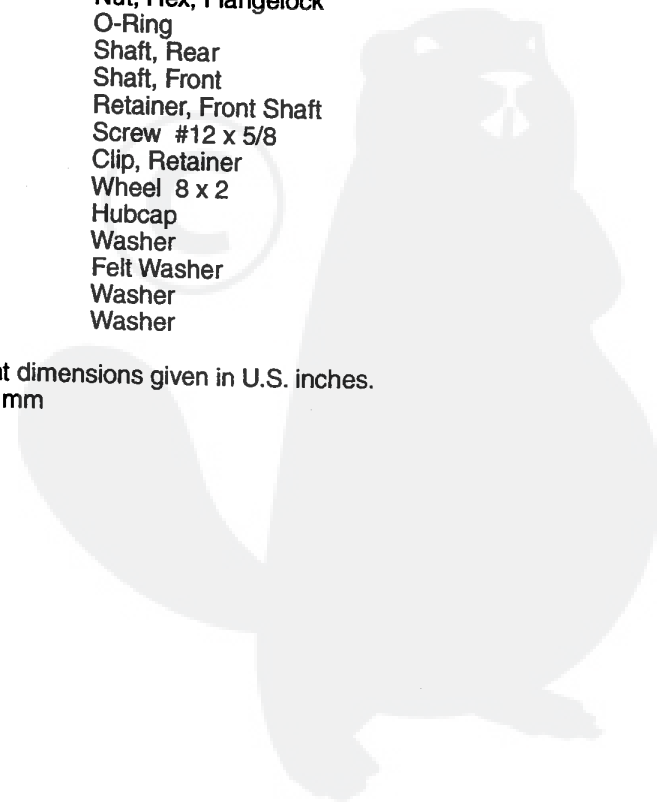


ROTARY LAWN MOWER - - MODEL NUMBER RE621C (RE621CG) - PRODUCT NUMBER 964 79 44-00

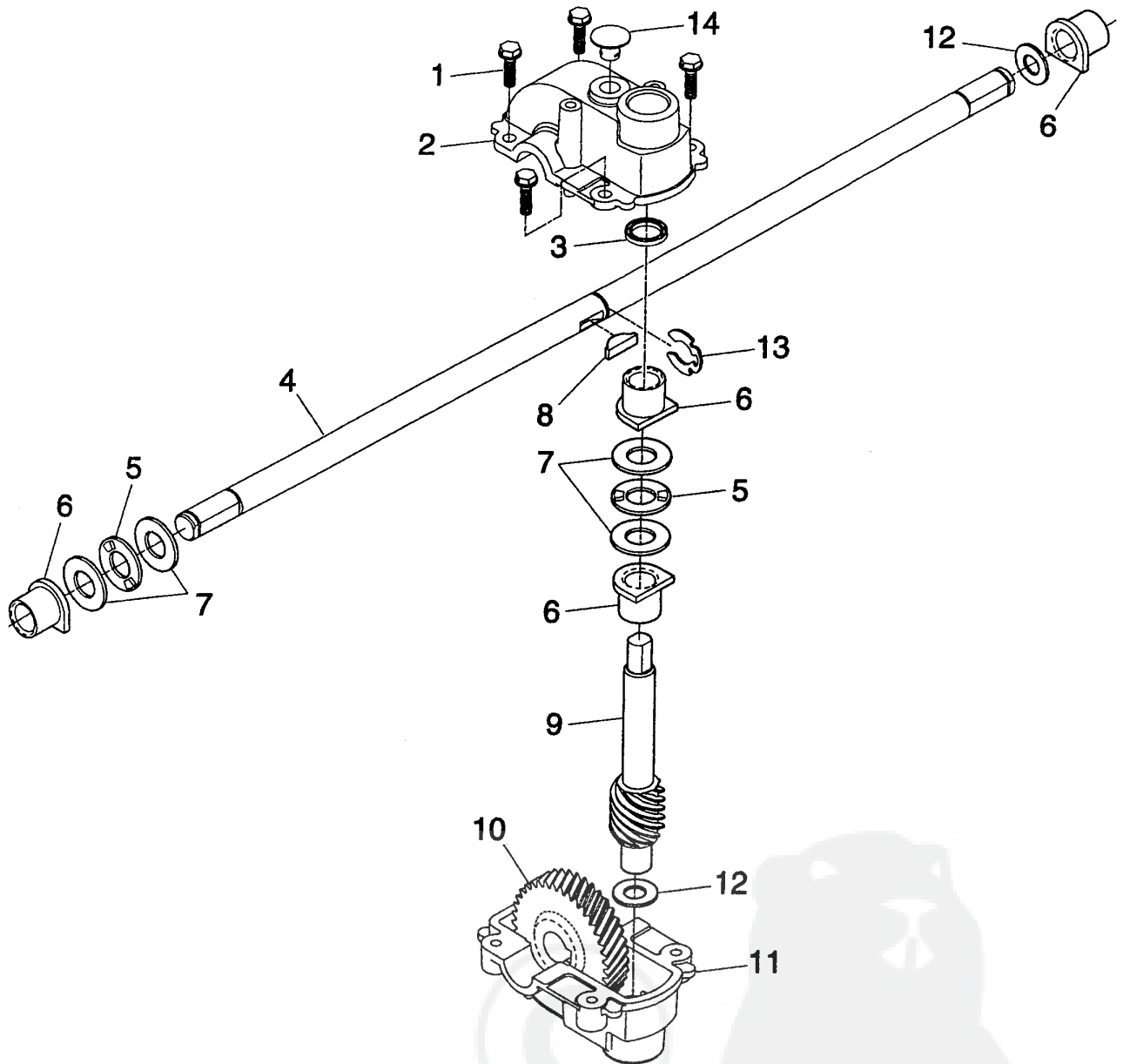
| KEY NO. | PART NO. | DESCRIPTION |
|---------|---------------------|--|
| 1 | 532 18 76-26 | Cable, Drive |
| 2 | 532 16 14-73 | Control Bar, Drive |
| 3 | 532 16 45-57 | Bracket, Downstop |
| 4 | 532 75 06-34 | Screw, Hex Washer Head, Tapping #10-24 |
| 5 | 532 19 05-14 | Cover, Drive |
| 6 | 532 75 06-34 | Screw, Threaded, Rolled #10-25 x .50 |
| 7 | 532 16 08-16 | V-Belt |
| 8 | 532 13 20-10 | Nut, Hex, Flangelock, Zinc Plated 3/8-16 |
| 9 | 532 16 39-39 | Pulley, Driven |
| 10 | 532 16 45-53 | Belt Keeper |
| 11 | 817 54 10-11 | Screw, Hex Washer Head #10-24 x .668 |
| 12 | 532 18 76-27 | Spring |
| 13 | 532 16 96-11 | Gearcase Assembly (See Breakdown) |
| 14 | 532 14 53-54 | Pin, Spring, Thrust |
| 15 | 532 05 70-79 | Washer, Hardened |
| 16 | 532 16 15-84 | Rod, Connecting |
| 17 | 532 16 16-02 | Spring, Extension |
| 18 | 532 16 45-54 | Spring, Selector |
| 19 | 532 19 00-69 | Knob, Selector Spring |
| 20 | 812 00 00-22 | E-Ring 7/8 |
| 21 | 532 16 33-65 | Bearing, Support |
| 22 | 532 16 99-11 | Bearing, Ball |
| 23 | 532 16 45-55 | Retainer, Drive Assembly, Stamped |

| KEY NO. | PART NO. | DESCRIPTION |
|---------|---------------------|---------------------------------------|
| 24 | 532 05 78-08 | Screw, Hex Head, Tapping 1/4-20 x .75 |
| 25 | 532 17 00-11 | Pawl |
| 26 | 532 16 64-50 | Pinion, Drive |
| 28 | 812 00 00-58 | E-Ring 7/16 |
| 29 | 532 18 05-04 | Cover, Dust, Wheel |
| 30 | 532 06 77-25 | Washer 1/2 x 1-1/2 x .134 |
| 32 | 532 18 07-54 | Wheel 9 x 2 |
| 33 | 532 08 39-23 | Nut, Hex, Flangelock |
| 27 | 532 18 81-52 | O-Ring |
| 35 | 532 16 45-52 | Shaft, Rear |
| 36 | 532 16 45-50 | Shaft, Front |
| 37 | 532 16 14-63 | Retainer, Front Shaft |
| 38 | 532 16 34-09 | Screw #12 x 5/8 |
| 39 | 532 70 02-79 | Clip, Retainer |
| 40 | 532 14 62-47 | Wheel 8 x 2 |
| 41 | 532 07 74-00 | Hubcap |
| 44 | 532 05 21-60 | Washer |
| 45 | 532 08 81-18 | Felt Washer |
| 46 | 819 57 22-16 | Washer |
| 47 | 532 06 23-35 | Washer |

NOTE: All component dimensions given in U.S. inches.
1 inch = 25.4 mm



**ROTARY LAWN MOWER - - MODEL NUMBER RE621C
(RE621CG) - PRODUCT NUMBER 964 79 44-00
GEARCASE ASSEMBLY - PART NUMBER 532 16 96-11**



| KEY NO. | PART NO. | DESCRIPTION |
|---------|--------------|---|
| 1 | 817 54 10-11 | Screw, Tapping #10-24 x .668 |
| 2 | 532 16 06-72 | Gear Case, Upper |
| 3 | 532 05 70-72 | Seal |
| 4 | 532 16 96-11 | Drive Shaft |
| 5 | 532 16 08-18 | Bearing, Needle, Thrust |
| 6 | 532 07 78-81 | Bearing |
| 7 | 532 16 08-17 | Washer, Thrust |
| 8 | 532 85 08-48 | Key, Hi-pro |
| 9 | 532 16 06-78 | Shaft, Worm |
| 10 | 532 16 06-79 | Gear, Helical |
| 11 | 532 16 06-73 | Gear Case, Lower |
| 12 | 532 05 70-79 | Washer, Hardened |
| 13 | 812 00 00-39 | E-Ring |
| 14 | 532 08 64-47 | Plug |
| -- | 532 75 03-69 | Grease |
| -- | 532 17 45-35 | Kit, Gearcase Replacement (Includes Grease) |

NOTE: All component dimensions given in U.S. inches.
1 inch = 25.4 mm

LIMITED WARRANTY

The Manufacturer warrants to the original consumer purchaser that this product as manufactured is free from defects in materials and workmanship. For a period of one (1) year from date of purchase by the original consumer purchaser, we will repair or replace, at our option, without charge for parts or labor incurred in replacing parts, any part which we find to be defective due to materials or workmanship. This Warranty is subject to the following limitations and exclusions.

1. This warranty does not apply to the engine. Please contact your nearest dealer where they will send the machine to the engine manufacturer.
2. Transportation charges for the movement of any power equipment unit or attachment are the responsibility of the purchaser. Transportation charges for any parts submitted for replacement under this warranty must be paid by the purchaser unless such return is requested by your dealer.
3. **Battery Warranty:** On products equipped with a Battery, we will replace, without charge to you, any battery which we find to be defective in manufacture, during the first ninety (90) days of ownership. After ninety (90) days, we will exchange the Battery, charging you 1/12 of the price of a new Battery for each full month from the date of the original sale. Battery must be maintained in accordance with the instructions furnished.
4. The Warranty period for any products used for rental or commercial purposes is limited to 90 days from the date of original purchase.
5. This Warranty applies only to products which have been properly assembled, adjusted, operated, and maintained in accordance with the instructions furnished. This Warranty does not apply to any product which has been subjected to alteration, misuse, abuse, improper assembly or installation, delivery damage, or to normal wear of the product.
6. **Exclusions:** Excluded from this Warranty are belts, blades, blade adapters, normal wear, normal adjustments, standard hardware and normal maintenance.
7. In case of any problem within the boundaries of this warranty, contact the nearest department store, indicate the model number, serial number and the date of purchase of your machine. This warranty does not apply to accidental damages. All implicit warranties are limited to the same time frames. Or contact:

E.M. Services
54 Rue Lambrechts
92400 Courbevoie
France
Telephone: (1) 46678078
Fax: (1) 46678095

THIS WARRANTY DOES NOT APPLY TO INCIDENTAL OR CONSEQUENTIAL DAMAGES. ANY IMPLIED WARRANTIES ARE LIMITED TO THE SAME TIME PERIODS STATED HEREIN.

Rally