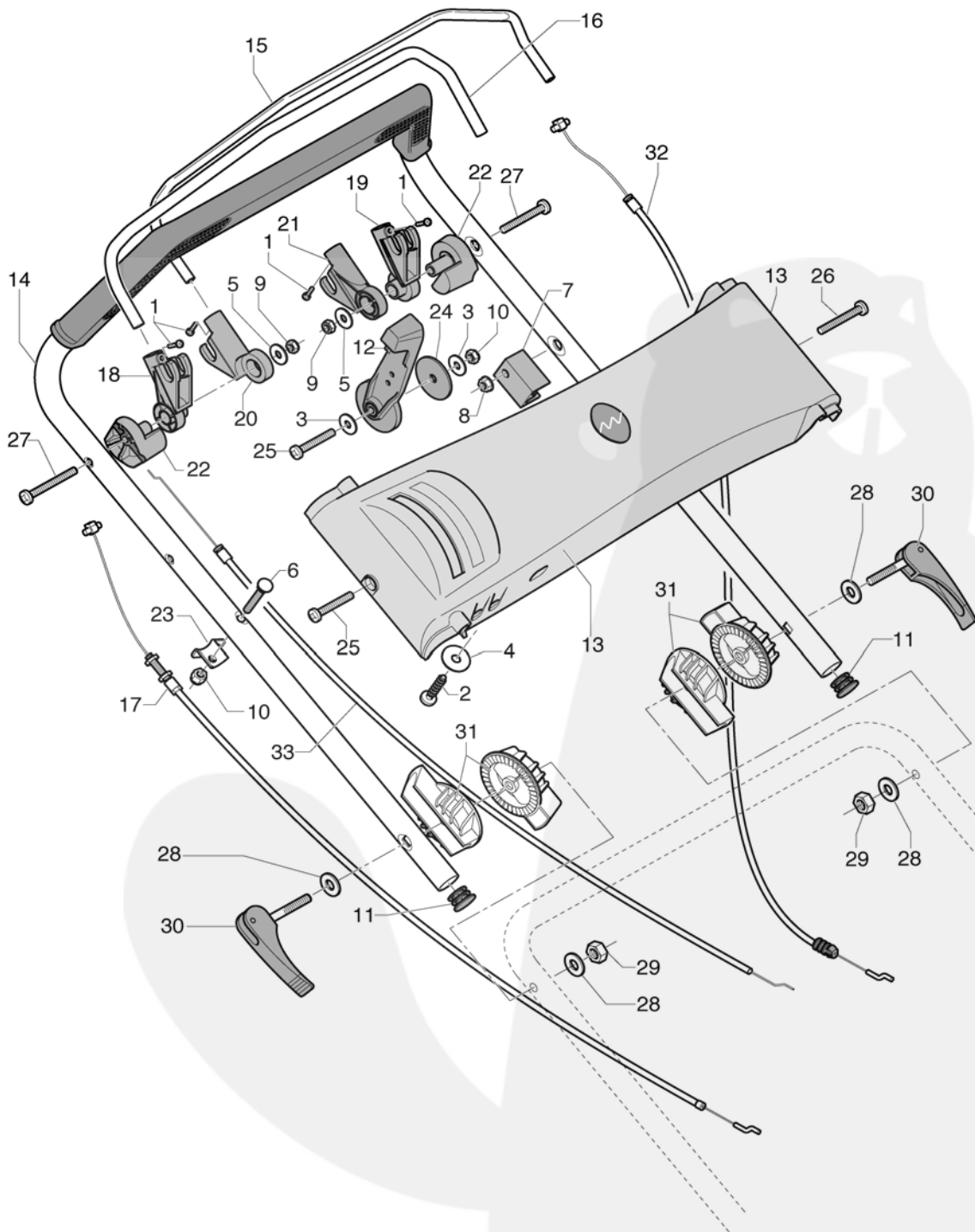


MANICO TRAZIONE - REGOLABILE 03/2006



POS.	CODICE	I	F	D	GB	E	Q.TA'
1	CP023595	VITE	VIS	SCHRAUBE	SCREW	TORNILLO	4
2	CP026322	VITE AUTOF.	VIS	SCHRAUBE	SCREW	TORNILLO	1
3	CP032907	RONDELLA	RONDELLE	SCHEIBE	WASHER	ARANDELA	2
4	CP032916	RONDELLA	RONDELLE	SCHEIBE	WASHER	ARANDELA	1
5	CP032926	RONDELLA	RONDELLE	SCHEIBE	WASHER	ARANDELA	2
6	CP040630	VITE TTQST	VIS	SCHRAUBE	SCREW	TORNILLO	1
7	CP042216	BLOCCETTO CAVO F	ATTACHE CABLE FRE	KABELBESCHWERER	CLIP	FIJADOR CABLE	1
8	CP042806	DADO	ÉCROU	MUTTER	KNOB	ESPARRAGO	1
9	CP044726	DADO	ÉCROU	MUTTER	KNOB	ESPARRAGO	2
10	CP044906	DADO	ÉCROU	MUTTER	KNOB	ESPARRAGO	2
11	CP045722	TAPPO	COUVERCLE	KAPPE	CAP	TAPA	2
12	CP050224	LEVA DI COMANDO	LEVIER	STANGE	LEVER	LEVA	1
13	CP050225	PLANCIA GRIGIA 7035	TABLEAU DE BORD	ARMATURENBRETT	DASH-BOARD	PLACA DEL MANILLAR	1
14	CP051043	MANICO SUP.	GUIDON	STIEL	HANDLE	MANILLAR	1
15	CP052068	LEVA INNESTO	LEVIER EMBRAYAGE	STANGE	LEVER CLUTCH	LEVA	1
16	CP052073	LEVA FRENO	LEVIER FREIN	STANGE	LEVER	LEVA	1
17	CP052138	CAVO SEMOVENZA	CABLE D'EMBRAYAGE	SELBSTBEWEGLICHK	CABLE CLUTCH	CABLE TRACCION	1
18	CP052216	SUPPORTO LEVA FRE	SUPPORT	AUFNAHMEBÜGEL	SUPPORT	SOPORTE	1
19	CP052217	SUPPORTO LEVA FRE	SUPPORT	AUFNAHMEBÜGEL	SUPPORT	SOPORTE	1
20	CP052218	SUPPORTO LEVA SEM	SUPPORT	AUFNAHMEBÜGEL	SUPPORT	SOPORTE	1
21	CP052219	SUPPORTO LEVA SEM	SUPPORT	AUFNAHMEBÜGEL	SUPPORT	SOPORTE	1
22	CP052220	SUPPORTO PER SUPP	SUPPORT	AUFNAHMEBÜGEL	SUPPORT	SOPORTE	2
23	CP052243	STAFFETTA REGISTR	EQUARRE	WINKELMASS	BRACKET	ABRAZDERA CABLE	1
24	CP053238	RONDELLA	RONDELLE	SCHEIBE	WASHER	ARANDELA	1
25	CP060630	VITE TC	VIS	SCHRAUBE	SCREW	TORNILLO	2
26	CP060640	VITE TC	VIS	SCHRAUBE	SCREW	TORNILLO	1
27	CP060656	VITE	VIS	SCHRAUBE	SCREW	TORNILLO	2
28	CP032924	RONDELLA	RONDELLE	SCHEIBE	WASHER	ARANDELA	4
29	CP044708	DADO	ÉCROU	MUTTER	KNOB	ESPARRAGO	2
30	CP047224	LEVA COMPLETA LUN	LEVIER	STANGE	LEVER	LEVA	2
31	CP050212	REGOLATORE MANICO	REGLAGE DE GUIDON	STIELREGULATOR	HANDLE REGULATOR	REGULADOR MANILLA	4

Tabella CAVI FRENO valida per macchine a spinta e a trazione

	CODICE CAVO	MODELLO TOSAERBA GT-MX	MOTORE		
		CP052149	41 - 42 - 45 - 46 - 47 - 52 - 53 - 50 - 51 - 56 - 57 - Biomulch	Honda	
	CP052146	56 VV			
32	CP040148	40 - 400	B&S	Classic - Quattro	
	CP046148	41 - 42 - 45 - 46 - 47			
	CP046149	45 - 50 52 - 53 - Biomulch			
	CP046148	41 - 42 - 45 - 46 - 47 - 51 - 52 - 53 - Biomulch	B&S	XTS	
	CP046149	50 - 56 - 56 VV - 57			
	CP046149	40 - 400	Tecumseh	Vantage - Prisma - Centura	
	CP052148	41 - 42 - 45 - 46 - 47 - 52 - 53			

Tabella CAVI ACCELERATORE valida per macchine a spinta e a trazione

	CODICE CAVO	MODELLO TOSAERBA GT-MX	MOTORE		
		CP047145	41 - 42 - 46 - 47	Honda	
	CP053145	45 - 50 - 51 - 52 - 53 - 57 - Biomulch			
33	CP056145	56 VV	Honda	GXV 140	
	CP050145	50 - 56 - 57			
	CP050145	41 - 42			
	CP050145	46 - 47	B&S	Classic - Quattro	
	CP057145	45 - 52 - 53 - Biomulch			
	CP050145	45 - 46 - 47 - 51 - 52 - 53 - Biomulch			
	CP050145	50 - 57	B&S	XTS	
	CP057145	56 VV			
	CP047145	41 - 42 - 46 - 47	Tecumseh	Vantage - Prisma - Centura	
	CP053145	45 - 50 - 51 - 52 - 53 - 57 - Biomulch			