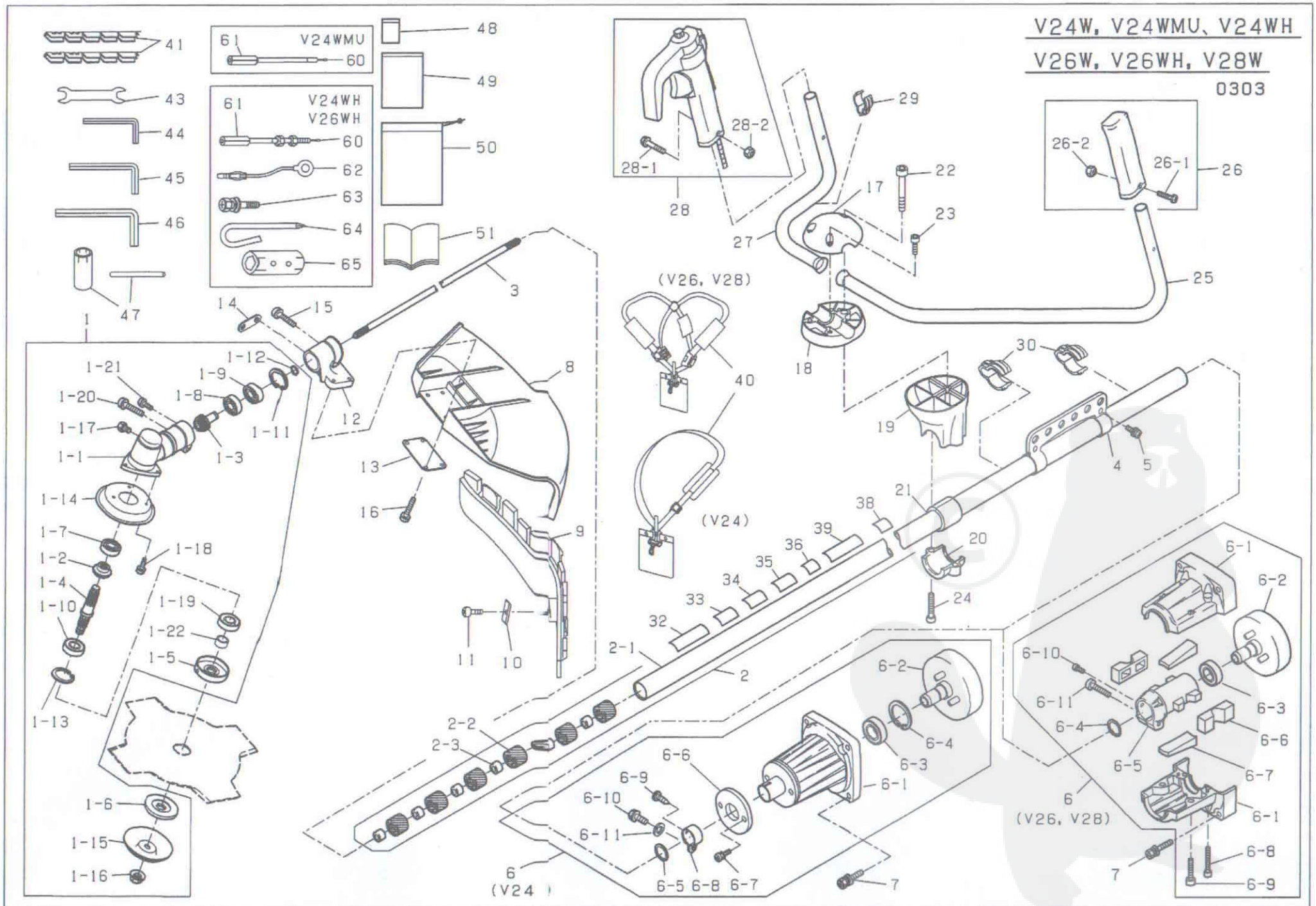


V24W, V24WMU, V24WH

V26W, V26WH, V28W

0303



| PARTS LIST MODEL:V26W,V26WH,V28W | | | | | | | |
|----------------------------------|---------|---------------------------|-----|------|-----|-------------|----------------|
| REF No. | CODE | NAME | QTY | | | REMARKS | |
| | | | 26W | 26WH | 28W | SIZE | ORIGINAL MODEL |
| 1 | 1675707 | GEAR CASE ASS'Y | 1 | 1 | | 26 | V26W |
| | 1675726 | | | | 1 | 28 | V28W |
| 1-1 | 1676365 | GEAR CASE | 1 | 1 | | 26 | V26W |
| | 1676377 | | | | 1 | 28 | V28W |
| 1-2 | 1676366 | BEVEL GEAR | 1 | 1 | | | V26W |
| | 1676378 | | | | 1 | | V28W |
| 1-3 | 1676367 | PINION | 1 | 1 | | | V26W |
| | 1676379 | | | | 1 | | V28W |
| 1-4 | 1676368 | GEAR SHAFT | 1 | 1 | | | V26W |
| | 1676380 | | | | 1 | | V28W |
| 1-5 | 1676369 | HOLDER(A) | 1 | 1 | | | V26W |
| | 1676381 | | | | 1 | | V28W |
| 1-6 | 1676370 | HOLDER(B) | 1 | 1 | | | V26W |
| | 1676382 | | | | 1 | | V28W |
| 1-7 | 0045020 | BEARING | 1 | 1 | | 6000 | |
| | 0045130 | | | | 1 | 6001 | |
| 1-8 | 0045020 | BEARING | 1 | 1 | | 6000 | |
| | 0045130 | | | | 1 | 6001 | |
| 1-9 | 0045500 | BEARING | 1 | 1 | | 6000Z | |
| | 0045510 | | | | 1 | 6001Z | |
| 1-10 | 1676371 | BEARING | 1 | 1 | | 6201 | |
| | 1676383 | | | | 1 | 6202 | |
| 1-11 | 0083160 | STOP RING | 1 | 1 | | 26 | |
| | 0083170 | | | | 1 | 28 | |
| 1-12 | 0082010 | STOP RING | 1 | 1 | | 10 | |
| | 0082030 | | | | 1 | 12 | |
| 1-13 | 0083190 | STOP RING | 1 | 1 | | 32 | |
| | 1668111 | | | | 1 | 35 | |
| 1-14 | 1676372 | GEAR CASE COVER | 1 | 1 | | φ40×φ88 | V26W |
| | 1676385 | | | | 1 | φ44×φ88 | V28W |
| 1-15 | 1676373 | NUT COVER | 1 | 1 | 1 | φ10×φ73 | V26W |
| 1-16 | 1676374 | NUT | 1 | 1 | 1 | M10×1.25 | |
| 1-17 | 0010505 | BOLT | 1 | 1 | 1 | M6×8 | |
| 1-18 | 1676360 | SCREW | 3 | 3 | 3 | M4×8(+)-2P | |
| 1-19 | 1676375 | OIL SEAL | 1 | 1 | | TC17327 | V26W |
| | 1676386 | | | | 1 | TC22357 | V28W |
| 1-20 | 1676376 | CAP BOLT | 1 | 1 | 1 | M6×28-2P | |
| 1-21 | 1676363 | CAP BOLT | 1 | 1 | 1 | M5×10-2P | |
| 1-22 | 1676364 | COLLAR | 1 | 1 | | φ12×φ17×9.5 | V26W |
| | 1676387 | | | | 1 | φ15×φ22×9.5 | V28W |
| 2 | 1675708 | DRIVE SHAFT HOUSING ASS'Y | 1 | 1 | | 26 | V26W |
| 2 | 1675727 | DRIVE SHAFT HOUSING ASS'Y | | | 1 | 28 | V28W |
| 2-1 | 1675709 | DRIVE SHAFT HOUSING | 1 | 1 | | 26 | V26W |
| | 1675728 | | | | 1 | 28 | V28W |

| PARTS LIST MODEL:V26W,V26WH,V28W | | | | | | | |
|----------------------------------|---------|----------------------|-----|------|-----|-------------|----------------|
| REF No. | CODE | NAME | QTY | | | REMARKS | |
| | | | 26W | 26WH | 28W | SIZE | ORIGINAL MODEL |
| 2-2 | 2031050 | METAL CUSHION | 6 | 6 | | | F-4 |
| | 2041200 | | | | 6 | | F-5 |
| 2-3 | 0200029 | OIL METAL | 6 | 6 | 6 | φ8×φ14×10 | F-5 |
| 3 | 1666942 | DRIVE SHAFT | 1 | 1 | 1 | | H26 |
| 4 | 1675710 | HANGER STRAP STEM | 1 | 1 | | 26 | V26W |
| | 1675729 | | | | 1 | 28 | V28W |
| 5 | 0200001 | SCREW | 2 | 2 | 2 | M6×12 (+)2P | |
| 6 | 0200030 | CLUTCH HOUSING ASS'Y | 1 | 1 | | | |
| | 0200079 | | | | 1 | | H28 |
| 6-1 | 1667108 | CLUTCH HOUSING | 1 | 1 | 1 | | H26 |
| 6-2 | 0200031 | CLUTCH DRUM | 1 | 1 | 1 | | F-4 |
| 6-3 | 0200004 | BEARING | 1 | 1 | 1 | 6002ZZ | |
| 6-4 | 0200006 | STOP RING | 1 | 1 | 1 | 15 | |
| 6-5 | 1667109 | CLUTCH HOUSING CORE | 1 | 1 | | 26 | F-18 |
| | 1666949 | | | | 1 | 28 | F-19 |
| 6-6 | 1652132 | HOUSING DAMPER | 2 | 2 | 2 | | F-18 |
| 6-7 | 1652258 | HOUSING DAMPER | 2 | 2 | 2 | | F-18 |
| 6-8 | 0200032 | CAP BOLT | 2 | 2 | 2 | M5×30 | |
| 6-9 | 0200033 | CAP BOLT | 2 | 2 | 2 | M6×25 | |
| 6-10 | 0200034 | SCREW | 1 | 1 | 1 | M5×10 (+)2P | |
| 6-11 | 0200035 | BOLT | 1 | 1 | 1 | M6×30 (+)3P | |
| 7 | 0200035 | BOLT | 4 | 4 | 4 | M6×30 (+)3P | |
| 8 | 1675697 | SAFETY GUARD | 1 | 1 | 1 | | V26W |
| 9 | 1675698 | SAFETY GUARD | 1 | 1 | 1 | | V26W |
| 10 | 1675699 | CUTTER | 1 | 1 | 1 | | V26W |
| 11 | 1675700 | SCREW | 1 | 1 | 1 | 4×12(+) | |
| 12 | 1675711 | SAFETY GUARD HOLDER | 1 | 1 | | 26 | V26W |
| 12 | 1675730 | SAFETY GUARD HOLDER | | | 1 | 28 | V28W |
| 13 | 1675702 | SAFETY GUARD HOLDER | 1 | 1 | 1 | | V26W |
| 14 | 1675703 | CONNECTOR | 1 | 1 | 1 | | V26W |
| 15 | 0200012 | CAP BOLT | 1 | 1 | 1 | M5×20 | |
| 16 | 0200013 | CAP BOLT | 4 | 4 | 4 | M5×16 | |
| 17 | 1675712 | HANDLE HOLDER | 1 | 1 | 1 | | J28 |
| 18 | 1675713 | HANDLE HOLDER | 1 | 1 | 1 | | J28 |
| 19 | 1675714 | HANDLE HOLDER | 1 | 1 | 1 | | V26W |
| 20 | 1675715 | HANDLE HOLDER | 1 | 1 | 1 | | V26W |
| 21 | 0200036 | HANDLE DAMPER | 1 | 1 | | | F-4 |
| | 0200069 | | | | 1 | | F-5 |
| 22 | 0200037 | CAP BOLT | 1 | 1 | 1 | M8×50 | |
| 23 | 0200038 | CAP BOLT | 2 | 2 | 2 | M6×20 | |
| 24 | 0200039 | CAP BOLT | 2 | 2 | 2 | M6×25 | |
| 25 | 1675716 | HANDLE | 1 | 1 | 1 | | V26W |
| 26 | 1655825 | GRIP ASS'Y | 1 | 1 | 1 | | H26W |
| 26-1 | 1655775 | SCREW | 1 | 1 | 1 | M5×30(+) | |

| PARTS LIST MODEL:V26W,V26WH,V28W | | | | | | | |
|----------------------------------|---------|----------------------|-----|------|-----|-------------|----------------|
| REF No. | CODE | NAME | QTY | | | REMARKS | |
| | | | 26W | 26WH | 28W | SIZE | ORIGINAL MODEL |
| 26-2 | 0030080 | NUT | 1 | 1 | 1 | M5 | |
| 27 | 1675717 | HANDLE | 1 | 1 | 1 | | V26W |
| 28 | 1675718 | THROTTLE LEVER ASS'Y | 1 | 1 | 1 | | V26W |
| 28-1 | 1655775 | SCREW | 1 | 1 | 1 | M5×30(+) | |
| 28-2 | 0030080 | NUT | 2 | 2 | 2 | M5 | |
| 29 | 1675722 | WIRE GUIDE | 1 | 1 | 1 | 19 | V28W |
| 30 | 1675723 | WIRE GUIDE | 2 | 2 | | 26 | V26W |
| | 1675731 | | | | 2 | 28 | V28W |
| 32 | U200015 | LABEL | 1 | 1 | 1 | 140×35 | |
| 33 | 0200016 | LABEL | 1 | 1 | 1 | 55×20 | |
| 34 | 0200017 | LABEL | 1 | 1 | 1 | 50×20 | |
| 35 | 1675724 | LABEL | 1 | 1 | | 55×20 | V26W |
| | 1675732 | LABEL | | | 1 | 55×20 | V28W |
| 36 | 0200018 | LABEL | 1 | 1 | 1 | 40×35 | |
| 38 | 0200040 | LABEL | 1 | 1 | | 40×36 | |
| | 0200081 | LABEL | | | 1 | 40×36 | |
| 39 | 0200021 | LABEL | 1 | 1 | 1 | 140×28 | |
| 40 | 1668671 | HARNESS ASS'Y | 1 | 1 | 1 | | J28 |
| 41 | 1666953 | PROTECTOR | 1 | 1 | 1 | | H28 |
| 43 | 0200023 | SPANNER | 1 | 1 | 1 | 10×8 | |
| 44 | 0200022 | SPANNER | 1 | 1 | 1 | 4 | |
| 45 | 0200042 | SPANNER | 1 | 1 | 1 | 5 | |
| 46 | 0200043 | SPANNER | 1 | 1 | 1 | 6 | |
| 48 | 1689082 | BAG | 1 | 1 | 1 | | |
| 49 | 0200025 | BAG | 1 | 1 | 1 | | |
| 50 | 0200026 | BAG | 1 | 1 | 1 | | |
| 51 | 1675705 | MANUAL | 1 | 1 | 1 | | |
| 60 | 0200108 | WIRE | | 1 | | | H26WH |
| 61 | 0200106 | CONNECTOR | | 1 | | | H24LPSMU |
| 62 | 0200111 | CORD ASS'Y | | 1 | | | K25W |
| 63 | 0200034 | SCREW | | 1 | | M5×10 (+)2P | |
| 64 | 0200112 | DRIVER | | 1 | | | H26WH |
| 65 | 0200113 | SPANNER | | 1 | | 16×19 | H26WH |