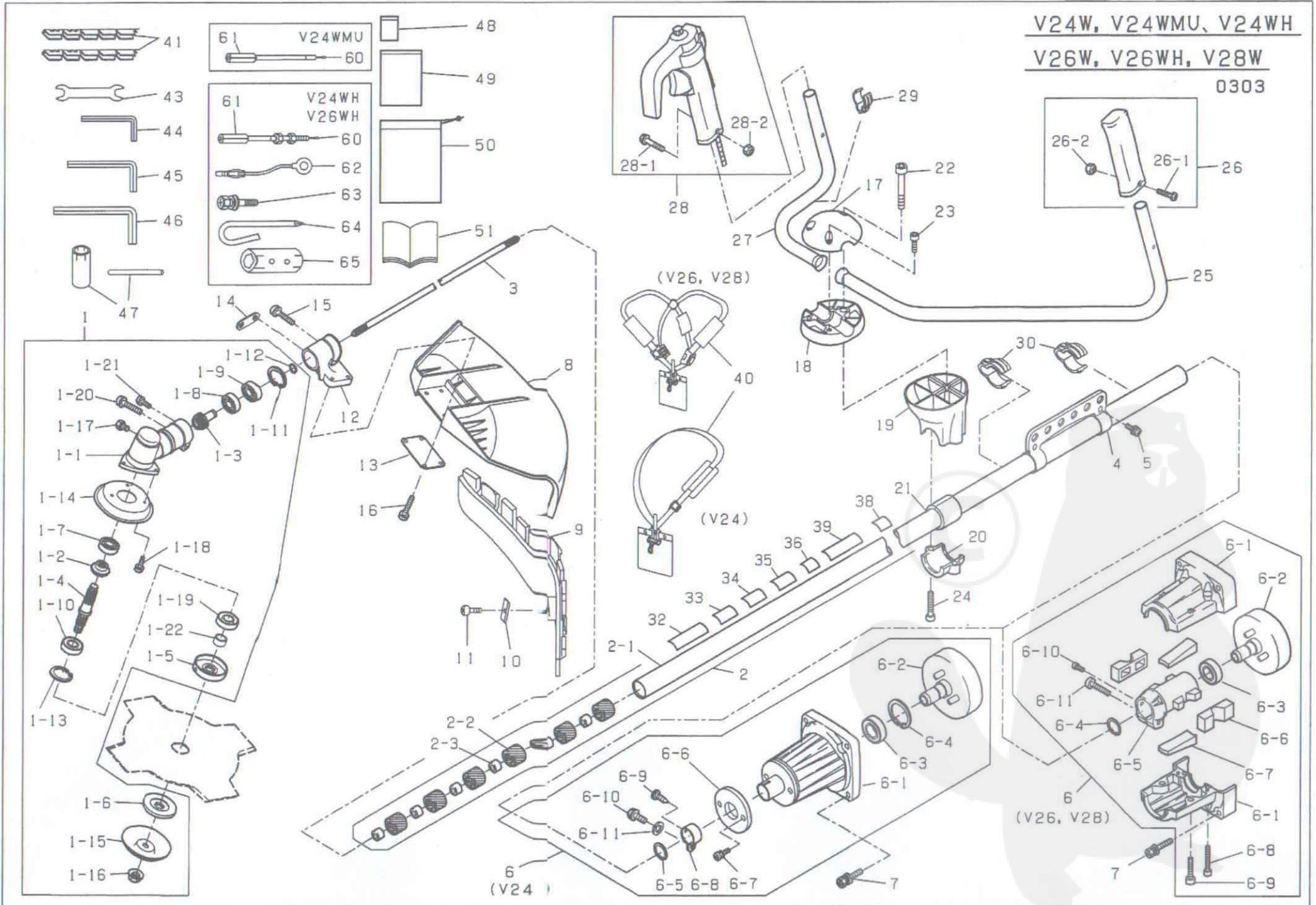


V24W, V24WMU, V24WH

V26W, V26WH, V28W

0303



PARTS LIST MODEL:V26W,V26WH,V28W							
REF No.	CODE	NAME	QTY			REMARKS	
			26W	26WH	28W	SIZE	ORIGINAL MODEL
1	1675707	GEAR CASE ASS'Y	1	1		26	V26W
	1675726				1	28	V28W
1-1	1676365	GEAR CASE	1	1		26	V26W
	1676377				1	28	V28W
1-2	1676366	BEVEL GEAR	1	1			V26W
	1676378				1		V28W
1-3	1676367	PINION	1	1			V26W
	1676379				1		V28W
1-4	1676368	GEAR SHAFT	1	1			V26W
	1676380				1		V28W
1-5	1676369	HOLDER(A)	1	1			V26W
	1676381				1		V28W
1-6	1676370	HOLDER(B)	1	1			V26W
	1676382				1		V28W
1-7	0045020	BEARING	1	1		6000	
	0045130				1	6001	
1-8	0045020	BEARING	1	1		6000	
	0045130				1	6001	
1-9	0045500	BEARING	1	1		6000Z	
	0045510				1	6001Z	
1-10	1676371	BEARING	1	1		6201	
	1676383				1	6202	
1-11	0083160	STOP RING	1	1		26	
	0083170				1	28	
1-12	0082010	STOP RING	1	1		10	
	0082030				1	12	
1-13	0083190	STOP RING	1	1		32	
	1668111				1	35	
1-14	1676372	GEAR CASE COVER	1	1		φ40×φ88	V26W
	1676385				1	φ44×φ88	V28W
1-15	1676373	NUT COVER	1	1	1	φ10×φ73	V26W
1-16	1676374	NUT	1	1	1	M10×1.25	
1-17	0010505	BOLT	1	1	1	M6×8	
1-18	1676360	SCREW	3	3	3	M4×8(+)-2P	
1-19	1676375	OIL SEAL	1	1		TC17327	V26W
	1676386				1	TC22357	V28W
1-20	1676376	CAP BOLT	1	1	1	M6×28-2P	
1-21	1676363	CAP BOLT	1	1	1	M5×10-2P	
1-22	1676364	COLLAR	1	1		φ12×φ17×9.5	V26W
	1676387				1	φ15×φ22×9.5	V28W
2	1675708	DRIVE SHAFT HOUSING ASS'Y	1	1		26	V26W
2	1675727	DRIVE SHAFT HOUSING ASS'Y			1	28	V28W
2-1	1675709	DRIVE SHAFT HOUSING	1	1		26	V26W
	1675728				1	28	V28W

PARTS LIST MODEL:V26W,V26WH,V28W							
REF No.	CODE	NAME	QTY			REMARKS	
			26W	26WH	28W	SIZE	ORIGINAL MODEL
2-2	2031050	METAL CUSHION	6	6			F-4
	2041200				6		F-5
2-3	0200029	OIL METAL	6	6	6	φ8×φ14×10	F-5
3	1666942	DRIVE SHAFT	1	1	1		H26
4	1675710	HANGER STRAP STEM	1	1		26	V26W
	1675729				1	28	V28W
5	0200001	SCREW	2	2	2	M6×12 (+)2P	
6	0200030	CLUTCH HOUSING ASS'Y	1	1			
	0200079				1		H28
6-1	1667108	CLUTCH HOUSING	1	1	1		H26
6-2	0200031	CLUTCH DRUM	1	1	1		F-4
6-3	0200004	BEARING	1	1	1	6002ZZ	
6-4	0200006	STOP RING	1	1	1	15	
6-5	1667109	CLUTCH HOUSING CORE	1	1		26	F-18
	1666949				1	28	F-19
6-6	1652132	HOUSING DAMPER	2	2	2		F-18
6-7	1652258	HOUSING DAMPER	2	2	2		F-18
6-8	0200032	CAP BOLT	2	2	2	M5×30	
6-9	0200033	CAP BOLT	2	2	2	M6×25	
6-10	0200034	SCREW	1	1	1	M5×10 (+)2P	
6-11	0200035	BOLT	1	1	1	M6×30 (+)3P	
7	0200035	BOLT	4	4	4	M6×30 (+)3P	
8	1675697	SAFETY GUARD	1	1	1		V26W
9	1675698	SAFETY GUARD	1	1	1		V26W
10	1675699	CUTTER	1	1	1		V26W
11	1675700	SCREW	1	1	1	4×12(+)	
12	1675711	SAFETY GUARD HOLDER	1	1		26	V26W
12	1675730	SAFETY GUARD HOLDER			1	28	V28W
13	1675702	SAFETY GUARD HOLDER	1	1	1		V26W
14	1675703	CONNECTOR	1	1	1		V26W
15	0200012	CAP BOLT	1	1	1	M5×20	
16	0200013	CAP BOLT	4	4	4	M5×16	
17	1675712	HANDLE HOLDER	1	1	1		J28
18	1675713	HANDLE HOLDER	1	1	1		J28
19	1675714	HANDLE HOLDER	1	1	1		V26W
20	1675715	HANDLE HOLDER	1	1	1		V26W
21	0200036	HANDLE DAMPER	1	1			F-4
	0200069				1		F-5
22	0200037	CAP BOLT	1	1	1	M8×50	
23	0200038	CAP BOLT	2	2	2	M6×20	
24	0200039	CAP BOLT	2	2	2	M6×25	
25	1675716	HANDLE	1	1	1		V26W
26	1655825	GRIP ASS'Y	1	1	1		H26W
26-1	1655775	SCREW	1	1	1	M5×30(+)	

PARTS LIST MODEL:V26W,V26WH,V28W							
REF No.	CODE	NAME	QTY			REMARKS	
			26W	26WH	28W	SIZE	ORIGINAL MODEL
26-2	0030080	NUT	1	1	1	M5	
27	1675717	HANDLE	1	1	1		V26W
28	1675718	THROTTLE LEVER ASS'Y	1	1	1		V26W
28-1	1655775	SCREW	1	1	1	M5×30(+)	
28-2	0030080	NUT	2	2	2	M5	
29	1675722	WIRE GUIDE	1	1	1	19	V28W
30	1675723	WIRE GUIDE	2	2		26	V26W
	1675731				2	28	V28W
32	U200015	LABEL	1	1	1	140×35	
33	0200016	LABEL	1	1	1	55×20	
34	0200017	LABEL	1	1	1	50×20	
35	1675724	LABEL	1	1		55×20	V26W
	1675732	LABEL			1	55×20	V28W
36	0200018	LABEL	1	1	1	40×35	
38	0200040	LABEL	1	1		40×36	
	0200081	LABEL			1	40×36	
39	0200021	LABEL	1	1	1	140×28	
40	1668671	HARNESS ASS'Y	1	1	1		J28
41	1666953	PROTECTOR	1	1	1		H28
43	0200023	SPANNER	1	1	1	10×8	
44	0200022	SPANNER	1	1	1	4	
45	0200042	SPANNER	1	1	1	5	
46	0200043	SPANNER	1	1	1	6	
48	1689082	BAG	1	1	1		
49	0200025	BAG	1	1	1		
50	0200026	BAG	1	1	1		
51	1675705	MANUAL	1	1	1		
60	0200108	WIRE		1			H26WH
61	0200106	CONNECTOR		1			H24LPSMU
62	0200111	CORD ASS'Y		1			K25W
63	0200034	SCREW		1		M5×10 (+)2P	
64	0200112	DRIVER		1			H26WH
65	0200113	SPANNER		1		16×19	H26WH