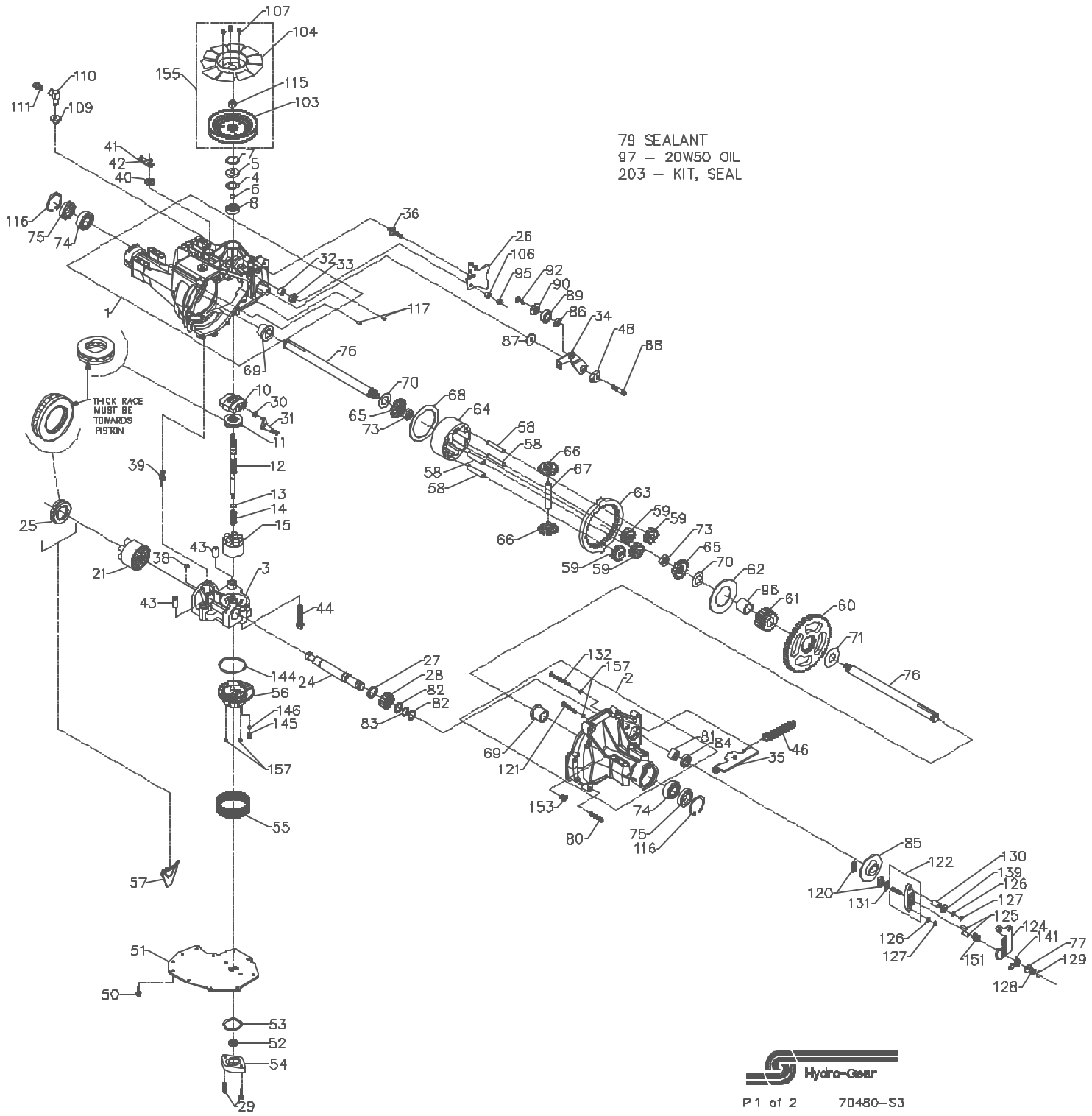


100-3479
322-3000

79 SEALANT
97 - 20W50 OIL
203 - KIT, SEAL



100-3479
322-3000

ITEM #	PART #	QTY	DESCRIPTION
1	70297	1	MAIN HOUSING ASSEMBLY
		1	MAIN HOUSING
		1	LIP SEAL
		1	FLANGE BEARING
		1	TRUNNION BUSHING
2	70300	2	CRADLE BEARING
		1	R.H. HOUSING ASSEMBLY
		1	R.H. HOUSING
		1	FLANGE BEARING
		2	O RING
		1	RIB NECK BOLT, 2"
		1	RIB NECK BOLT, 3"
		1	NEEDLE BEARING (SCE1412)
		1	LIP SEAL (.875 I.D. x 1.30 O.D. x .25)
3	70500	1	KIT, CENTER SECTION
		1	CENTER SECTION
		1	DU BUSHING
		1	BUSHING
		1	NO BLEED CHECK PLUG ASSEMBLY
		1	.027 BLEED CHECK PLUG ASSEMBLY
		1	SPACER
4	2003018	1	SEAL-LIP
5	9008000-0128	1	WIRE RETAINING RING
6	2003016	1	RETAINING RING
7	2003052	1	RETAINING RING
8	2003043	1	BALL BEARING
10	2003087	1	VARIABLE SWASHPLATE
11	50551	1	THRUST BEARING 30 X 52 X 13
12	50795	1	INPUT SHAFT
13	2003017	1	BLOCK THRUST WASHER
14	2003014	1	BLOCK SPRING
15	70331	1	10cc CYLINDER BLOCK ASSEMBLY
		1	10cc CYLINDER BLOCK
		5	10cc PISTON
		5	10cc PISTON SPRING
		5	PISTON SEAT WASHER
21	70082	1	21cc CYLINDER BLOCK ASSEMBLY
		1	21cc CYLINDER BLOCK
		7	PISTON SEAT WASHER
		7	21cc PISTON
		7	21cc PISTON SPRING
24	50882	1	OUTPUT (MOTOR) SHAFT
25	50552	1	THRUST BEARING 42 X 68 X 16
26	51250	1	CONTROL ARM
27	50774	1	SPACER
28	50881	1	16T PINION GEAR
29	50975	2	CAPSCREW, M6 X 1-25
30	2000015	1	SLOT GUIDE
31	50807	1	TRUNNION ARM
32	2003009	1	TRUNNION BUSHING
33	9008000-0126	1	LIP SEAL
34	51257	1	RETURN ARM
35	51243	1	BRACKET, BELL CRANK
36	50426	1	5/16-24 STD
38	2003554	1	BYPASS PLATE
39	2003555	1	BYPASS ACTUATOR

ITEM #	PART #	QTY	DESCRIPTION
40	45074	1	LIP SEAL
41	50270	1	BYPASS ARM
42	44870	1	RETAINING RING
43	50002	2	PIN
44	50016	3	SCREW
48	51199	1	RETURN SPRING
48	51097	1	ADJUSTING PUCK
50	50752	11	SCREW, 1/4-20 X .75
51	50972	1	LOWER COVER
52	50273	1	GEROTOR ASSEMBLY
53	9004101-1340	1	O-RING
54	50260	1	GEROTOR COVER
55	70538	1	KIT, FILTER
56	51158	1	CHARGE MANIFOLD
57	50796	1	RETAINER, MOTOR BEARING
58	50776	4	PIN, CARRIER
59	50763	4	15T PLANET GEAR
60	50646	1	67T SPUR GEAR
61	50645	1	21 TOOTH SUN GEAR
62	50769	1	PLANET THRUST PLATE
63	50764	1	51T RING GEAR
64	50765	1	PLANETARY CARRIER
65	50647	2	MITER GEAR DIFF. (SPLINED)
66	50648	2	MITER GEAR, DIFF.
67	50766	1	SHAFT, DIFFERENTIAL
68	50767	1	DIFF THRUST PLATE
69	50768	2	FLANGE BEARING
70	50770	2	WASHER
71	50788	1	WASHER
73	50791	2	HEX JAM NUT, 5/8-18
74	50771	2	BALL BRG 6205-1
75	50772	2	SEAL 1" ID x 2.0472" x 0.375"
76	50663	2	SHAFT, AXLE
77	44130	1	WASHER
79	50928	1	SEALANT
80	50868	9	TORX HEAD SCREW, 5/16-18
81	44752	1	NEEDLE BEARING (SCE1412)
82	50777	2	WASHER
83	50775	1	RETAINING RING
84	50773	1	LIP SEAL (.875 I.D. x 1.30 O.D. x .25)
85	50779	1	BRAKE DISK
86	50132	1	WASHER .5 X 1.0 X .03
87	50836	1	WASHER
88	50837	1	SCREW, 5/16-24 X 1-1/2
89	44147	1	BEARING
90	51200	1	SPACER, LOCATING
92	50870	1	COUNTERSUNK SCREW
95	50108	1	HEX LOCK NUT 5/16-24
96	50866	1	SLEEVE BEARING
97		122 OZ	OIL-20W50
103	51242	1	PULLEY
104	50848	1	FAN
106	50850	1	SPACER, TRUNNION
107	50851	3	SCREW
109	50133	1	BUSHING, RUBBER
110	50308	1	FITTING
111	70109	1	CAP-VENT ASSEMBLY
		1	PLASTIC VENT
		1	CAP-VENT
115	44133	1	HEX NUT 1/2-20
116	50859	2	RETAINING RING
117	9004800-2506	2	STD HDLS PIN

ITEM #	PART #	QTY	DESCRIPTION
120	44132	2	PUCK, BRAKE
121	50874	1	RIB NECK BOLT, 2"
122	70633	1	YOKE, BRAKE ASSEMBLY
124	50911	1	ARM, BRAKE
125	44127	2	PINS, BRAKE
126	43177	2	LOCKWASHER, 1/4"
127	43178	2	NUT, 1/4-20
128	44142	1	NUT, CASTLE
129	44101	1	COTTER PIN
130	23711	1	SPACER
131	44134	1	PUCK PLATE
132	50865	1	RIB NECK BOLT, 3"
139	44278	1	WASHER, 7/8 O.D. X .265 I.D. X .125 THK
141	50884	1	SPRING, BRAKE ARM BIAS
144	50974	1	O-RING, 2.987 X 0.103
145	51157	1	SPRING, RELIEF
146	9001214-4400	1	BALL, 7/16
151	50919	1	COMP. SPRING, BRAKE ANTI-DRAG
153	9005110-5600	1	PLUG, STRAIGHT THREAD
155	70489	1	KIT, FAN/PULLEY
		1	PULLEY
		1	FAN
		3	SCREW
		1	HEX NUT 1/2-20
157	50977	4	O-RING, 0.070X0.239
203	70492	1	KIT, SEAL
		1	SEAL-LIP
		1	SEAL-LIP
		1	SEAL-LIP
		1	O-RING
		2	SEAL 1" ID X 2.0472" X .375"
		1	LIP SEAL (.875 I.D. x 1.3 O.D. x .25)
		2	O-RING, .070X.239
		2	SCREW O-RING
		1	KIT, O-RING, MANIFOLD