



M220 - P55 - P55V

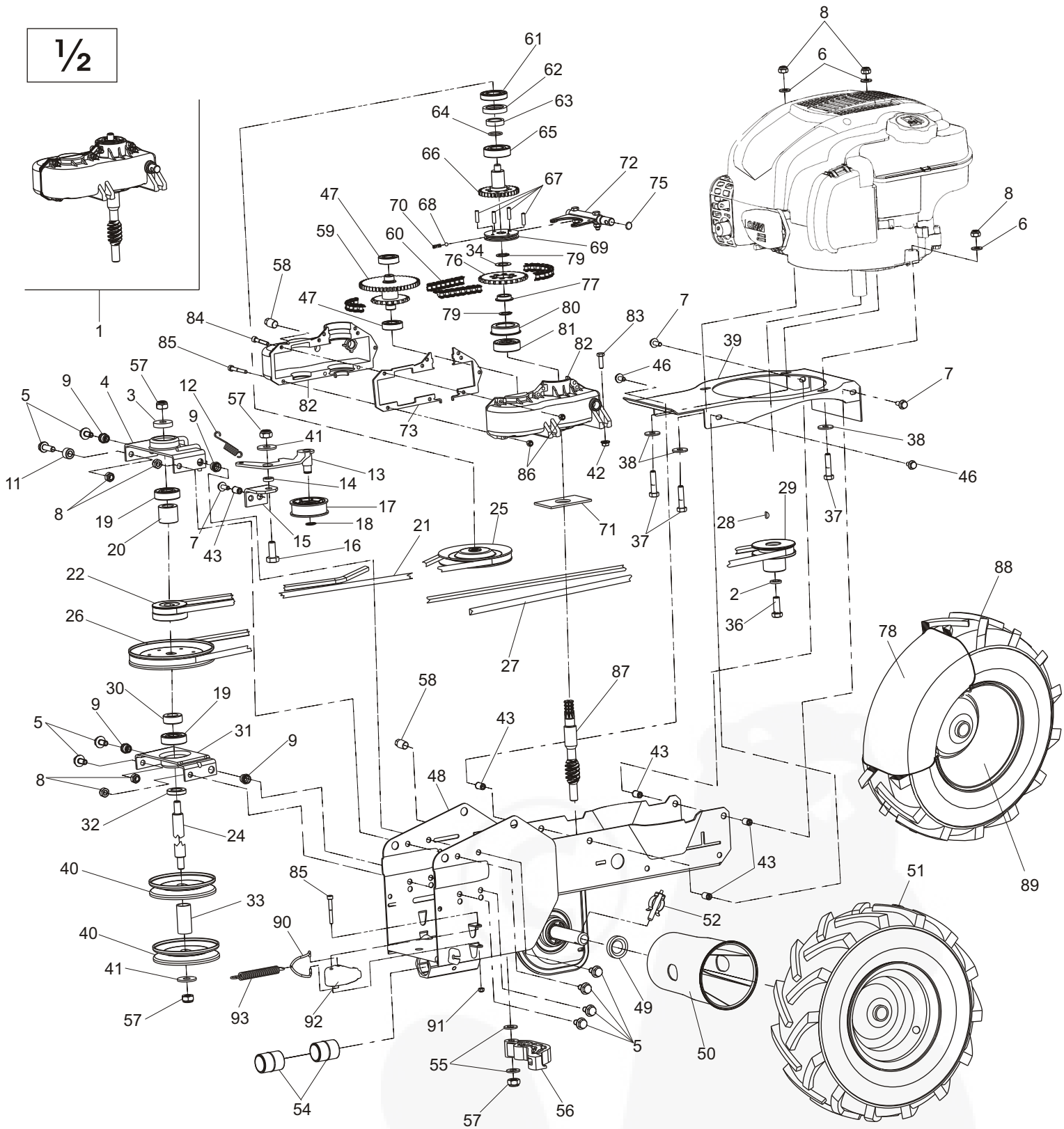
Valido per macchine prodotte dal 01/2014

Valid for units produced from 01/2014

Gültig für Geräte ab dem 01/2014 hergestellt

S'applique aux machines produites du : 01/2014

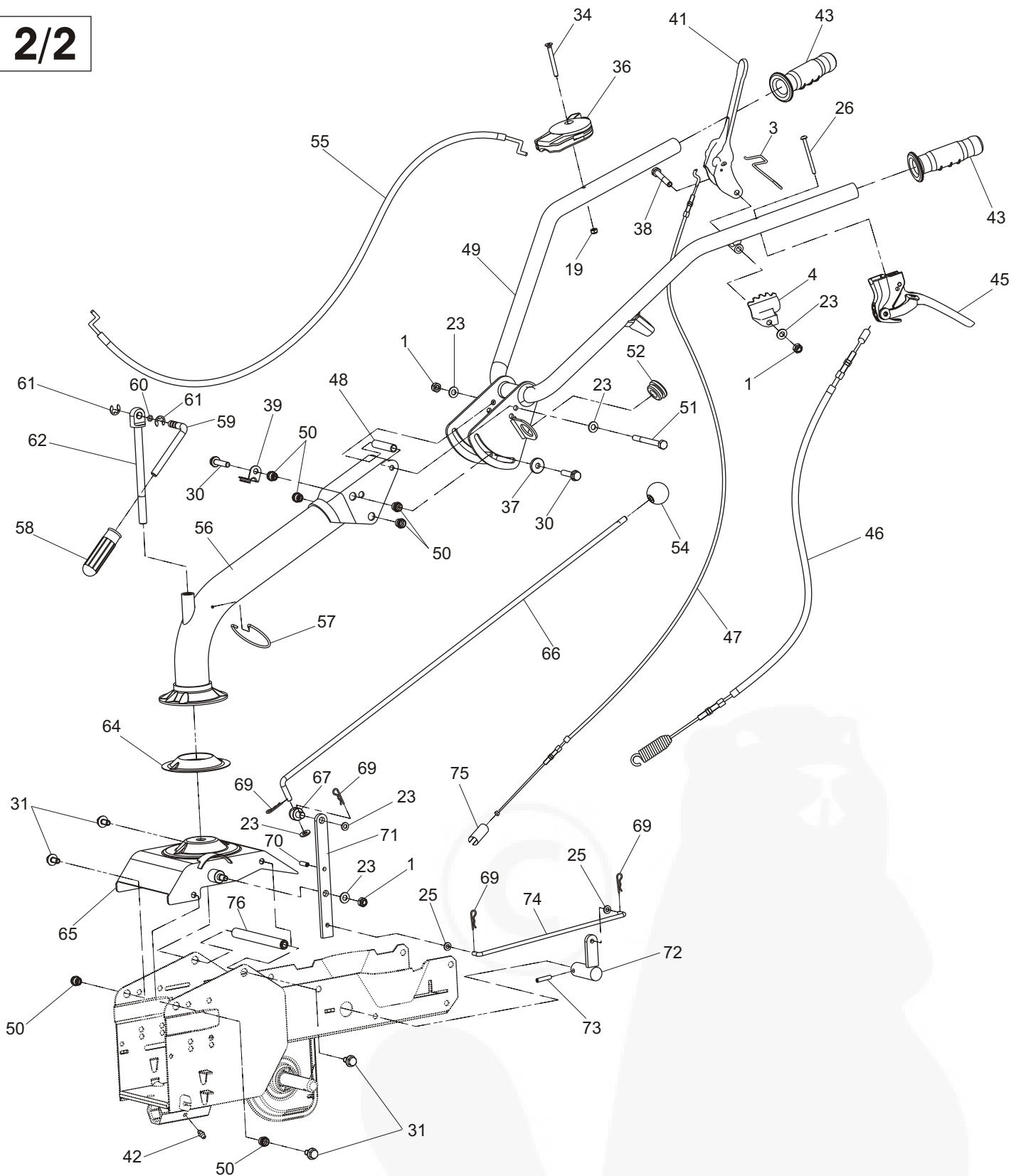
1/2



| | | | | | | | | | |
|----|-------------|----|------------------------|----|------------------------|----|---------------|----|-------------|
| 1 | 32.1005.035 | 21 | 32.1005.194 | 42 | 81.4549.000 | 62 | 80.2122.000 | - | 32.1005.305 |
| 2 | 84.3755.000 | 22 | 32.1005.417 | 43 | 80.8990.000 | 63 | 32.1005.312 | 83 | 86.2160.000 |
| 3 | 26.0005.232 | 24 | 32.1005.415 | 46 | 86.1998.500 | 64 | 80.3051.000 | 84 | 86.1936.000 |
| 4 | 32.1005.410 | 25 | 32.1005.420 | 47 | 81.2523.000 | 65 | 81.2694.000 | 85 | 86.1942.000 |
| 5 | 86.2494.000 | 26 | 26.1005.203 | 48 | 32.1005.080 (M220-P55) | 66 | 32.1005.314 | 86 | 81.4530.080 |
| 6 | 84.3685.000 | 27 | 32.1005.195 | - | 32.1005.078 (P55V) | 67 | 85.1166.000 | 87 | 32.1005.316 |
| 7 | 86.2120.000 | 28 | 26.0050.202 | 49 | 80.2060.000 | 68 | 84.7412.000 | 88 | 32.1015.255 |
| 8 | 81.4588.000 | 29 | 32.1025.100 | 50 | 32.1015.905 | 69 | 32.1005.315 | 89 | 32.1015.256 |
| 9 | 26.0050.200 | 30 | 32.1005.213 | 51 | 32.1015.252 □ | 70 | 23.0005.906 | 90 | 32.2005.300 |
| 10 | 86.2685.000 | 31 | 26.3005.135 | - | 32.1015.253 ■ | 71 | 32.1005.308 | 91 | 81.4530.090 |
| 11 | 22.0005.199 | 32 | 23.1005.256 | 52 | 26.1010.221 | 72 | 32.1005.345 | 92 | 32.2005.930 |
| 12 | 23.1005.903 | 33 | 32.1005.218 | 53 | 82.6016.000 | 73 | 32.1005.902 | 93 | 32.2005.301 |
| 13 | 32.1005.400 | 34 | 32.1005.321 | 54 | 26.1005.901 | 75 | 80.3056.000 | | |
| 14 | 26.0005.230 | 36 | 26.0050.201 | 55 | 84.3812.000 | 76 | 32.1005.317 | | |
| 15 | 32.1005.408 | 37 | 86.2741.000 | 56 | 26.1005.920 | 77 | 32.1005.320 | | |
| 16 | 86.3254.000 | 38 | 84.3708.000 | 57 | 81.4645.000 | 78 | 32.1015.254 | | |
| 17 | 26.0005.906 | 39 | 32.1005.120 (M220-P55) | 58 | 85.2520.000 | 79 | 80.1105.000 | | |
| 18 | 80.1102.000 | - | 32.1005.121 (P55V) | 59 | 32.1005.318 | 80 | 32.1005.306 | | |
| 19 | 81.2586.000 | 40 | 26.0005.220 | 60 | 32.1005.322 | 81 | 81.2577.000 | | |
| 20 | 32.1005.217 | 41 | 84.3818.000 | 61 | 81.2632.000 | 82 | 32.1005.304 □ | | |

□ Destro - Right -
Techt - Droite

■ Sinistro - Left -
Link - Gauche



- 1 81.4588.000
- 3 26.1010.305
- 4 26.1010.304
- 19 81.4548.000
- 23 84.3685.000
- 25 84.3605.010
- 26 86.1840.275
- 30 86.2685.000
- 31 86.2494.000
- 36 32.1010.920
- 32.1010.930 Honda
- 37 84.3711.000
- 38 86.2881.000
- 39 36.0010.130
- 41 26.1010.302
- 42 82.6016.000
- 43 33.0010.910
- 45 36.0010.185

- 46 32.1010.302
- 47 32.1010.316
- 48 23.1010.209
- 49 32.1010.174
- 50 26.0050.200
- 51 86.3047.000
- 52 22.0010.909
- 54 83.7528.000
- 55 32.1010.332 (B&S)
- 23.1020.227 (Honda)
- 56 32.1010.145 (M220-P55)
- 32.1010.146 (P55V)
- 57 23.1010.224
- 58 22.0050.900
- 59 23.1010.223
- 60 80.3050.000
- 61 80.1039.000
- 62 23.1010.219
- 64 23.1005.906

- 65 32.1005.352 (M220-P55)
- 32.1005.353 (P55V)
- 66 32.1010.220
- 67 32.1010.910
- 69 85.1350.000
- 70 85.1236.000
- 71 32.1010.226
- 72 32.1005.335
- 73 85.1262.000
- 74 32.1010.224
- 75 26.1010.210
- 76 32.1010.200