



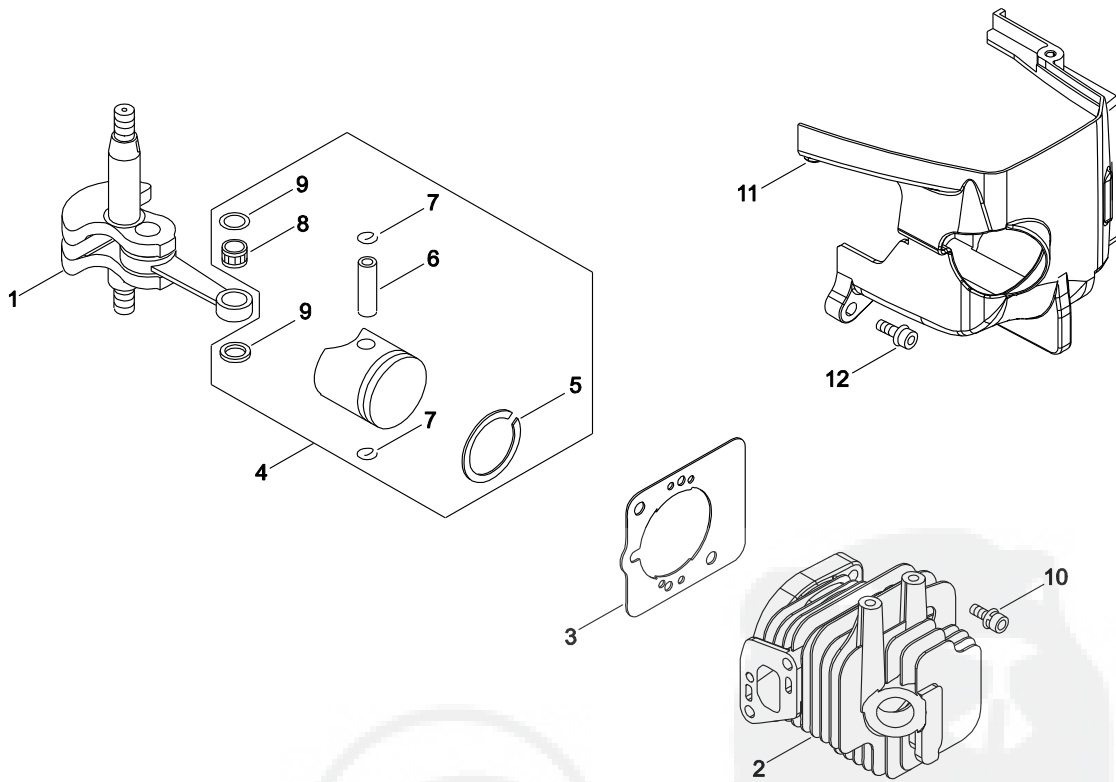
PARTS CATALOG
HEDGE TRIMMER
HCR-161ES(36)

36026390 -

CE

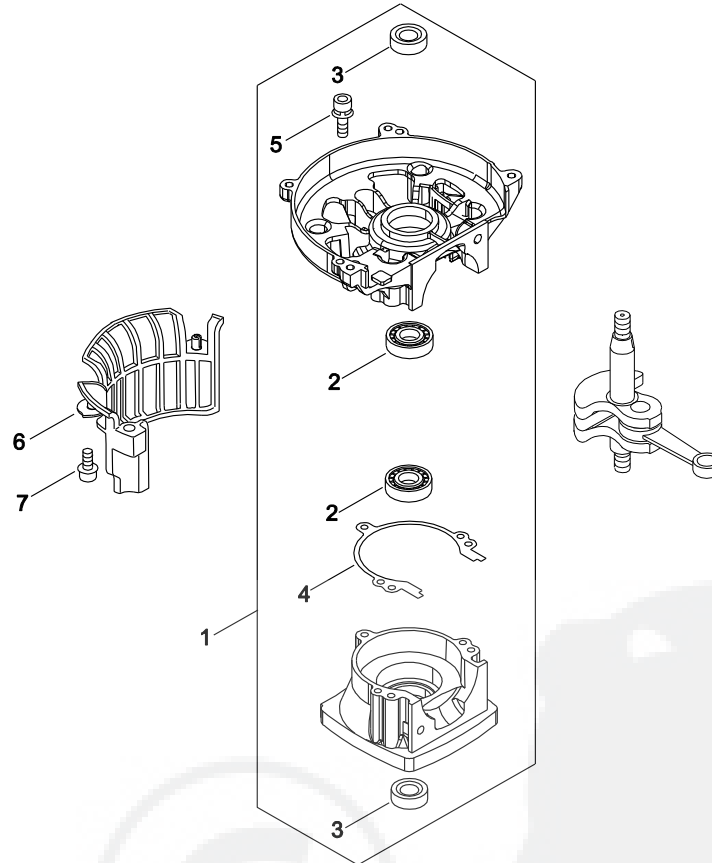
P014-000041-13L

1. CYLINDER, PISTON, CRANKSHAFT



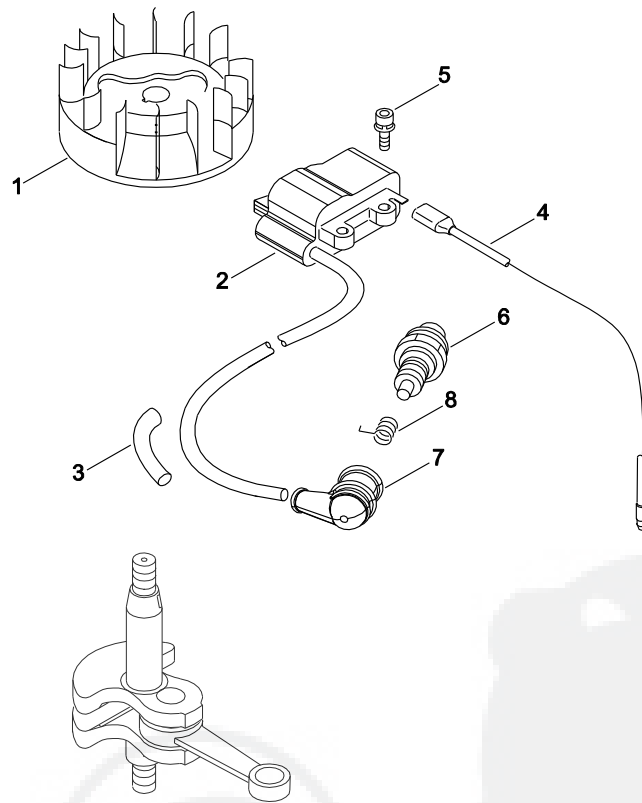
KEY	LV	PART NUMBER	Q'TY	DESCRIPTION	REMARKS	NOTE1	NOTE2
1		A011-000223	1	CRANKSHAFT,ASM			
2		A130-000550	1	CYLINDER			
3		V100-000160	1	GASKET,CYL			
4		P021-007772	1	PISTON KIT			
5	+	A101-000090	1	RING,PISTON			
6	+	100013-11520	1	PIN, PISTON			
7	+	100015-04630	2	CIRCLIP, PISTON PIN			
8	+	100113-05930	1	BEARING, NEEDLE	8*12*8		
9	+	100014-08960	2	SPACER, PISTON PIN			
10		900162-05022	2	BOLT, H.S. 5*22	5*22 W,SW		
11		A160-000880	1	COVER,CYLINDER			
12		91121-05016	1	BOLT, FLANGE	10.9 SILVER		

2. CRANKCASE



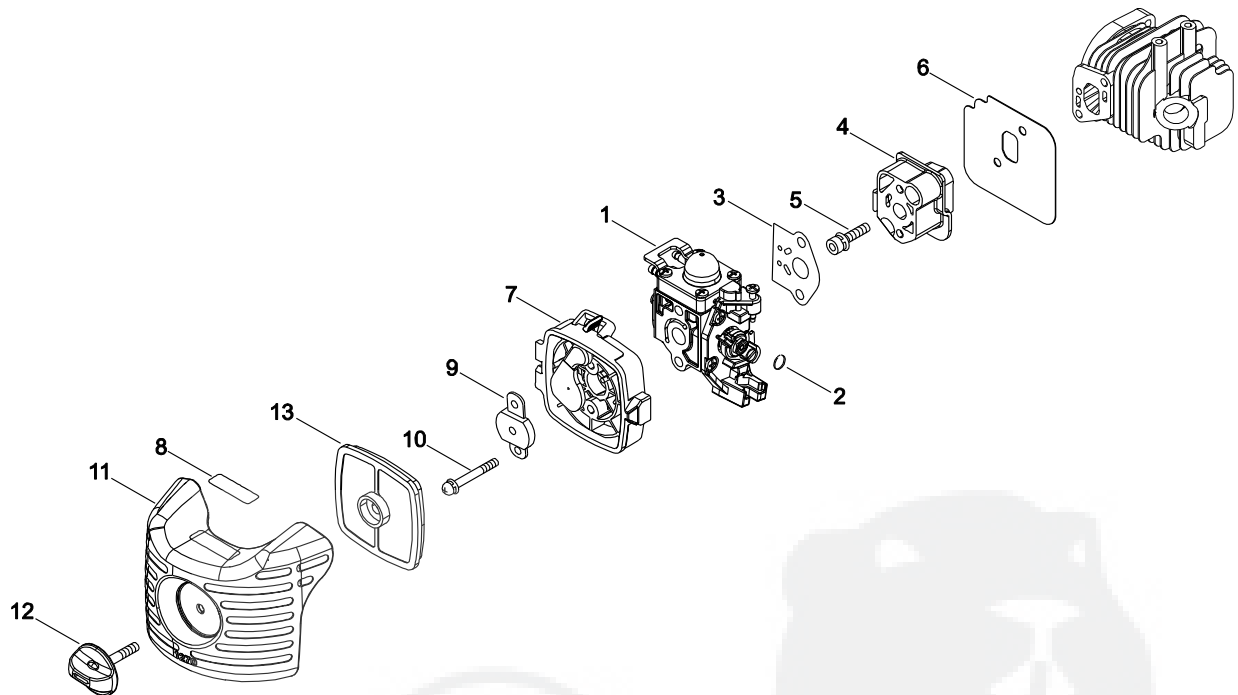
KEY	LV	PART NUMBER	Q'TY	DESCRIPTION	REMARKS	NOTE1	NOTE2
1		100204-52133	1	CRANKCASE KIT			
2	+	94035-36201	2	BEARING BALL	6201X3JR2C3		
3	+	100212-42031	2	OILSEAL	ISCD 12*22*4.5		
4	+	100242-42030	1	GASKET, CRANKCASE			
5	+	900162-05028	3	BOLT, H.S. 5*28	5*28 W,SW		
6		A127-000170	1	COVER,DUST			
7		91118-05016	1	BOLT	CM-5*16		

3. MAGNETO



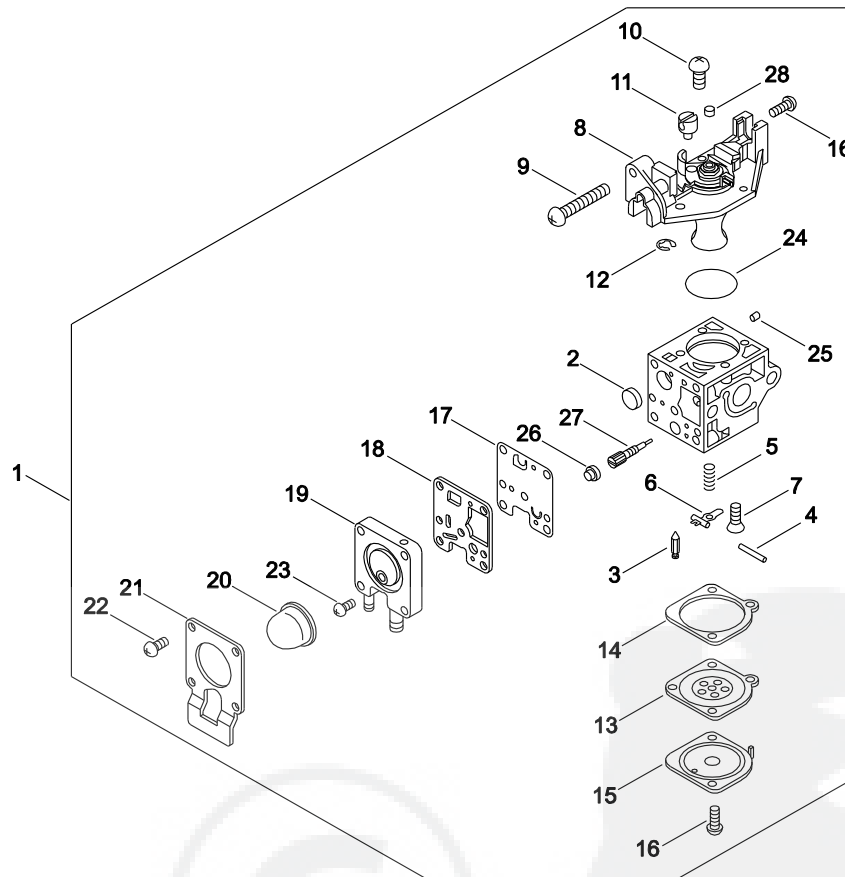
KEY	LV	PART NUMBER	Q'TY	DESCRIPTION	REMARKS	NOTE1	NOTE2
1		A409-000210	1	ROTOR,MAGNETO			
2		A411-000130	1	COIL,IGNITION			
3		V475-001610	1	TUBE	7*8.6*55	HST-10	
4		V485-000870	1	LEAD	L=190,#187,CA104		
5		91113-04020	2	BOLT	CM-4*20 SW,W		
6		A425-000000	1	SPARKPLUG	BPMR8Y		
7		A427-000013	1	CAP, SPARK PLUG			
8		A426-000010	1	TERMINAL,SPARKPLUG			

4. AIR CLEANER, CARBURETOR



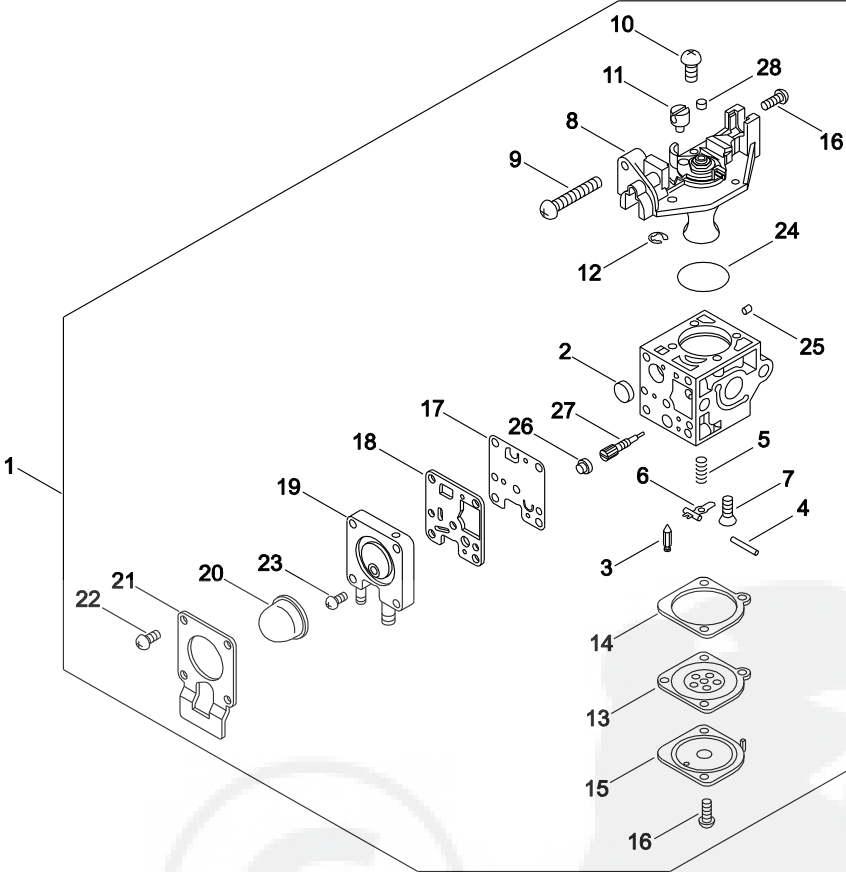
KEY	LV	PART NUMBER	Q'TY	DESCRIPTION	REMARKS	NOTE1	NOTE2
1		A021-004081	1	CARBURETOR,DIAPHRAGM	ZAMA RB-K115		
2		V490-001100	1	CLIP			
3		V103-000410	1	GASKET,INTAKE	T:0.5		
4		A200-000300	1	INSULATOR, INTAKE			
5		900162-05025	2	BOLT, H.S. 5*25	5*25 W,SW		
6		V103-000180	1	GASKET,INTAKE			
7		P021-015570	1	CASE, AIR CLEANER			
8		890332-52730	1	LABEL, CHOKE			
9		129011-52730	1	PLATE, PREVENT			
10		900242-05065	2	SCREW 5*65	5*65		
11		A232-000400	1	LID,CLEANER			
12		V299-000250	1	KNOB,FASTENER			
13		A226-001410	1	ELEMENT,AIR FILTER			

5. CARBURETOR



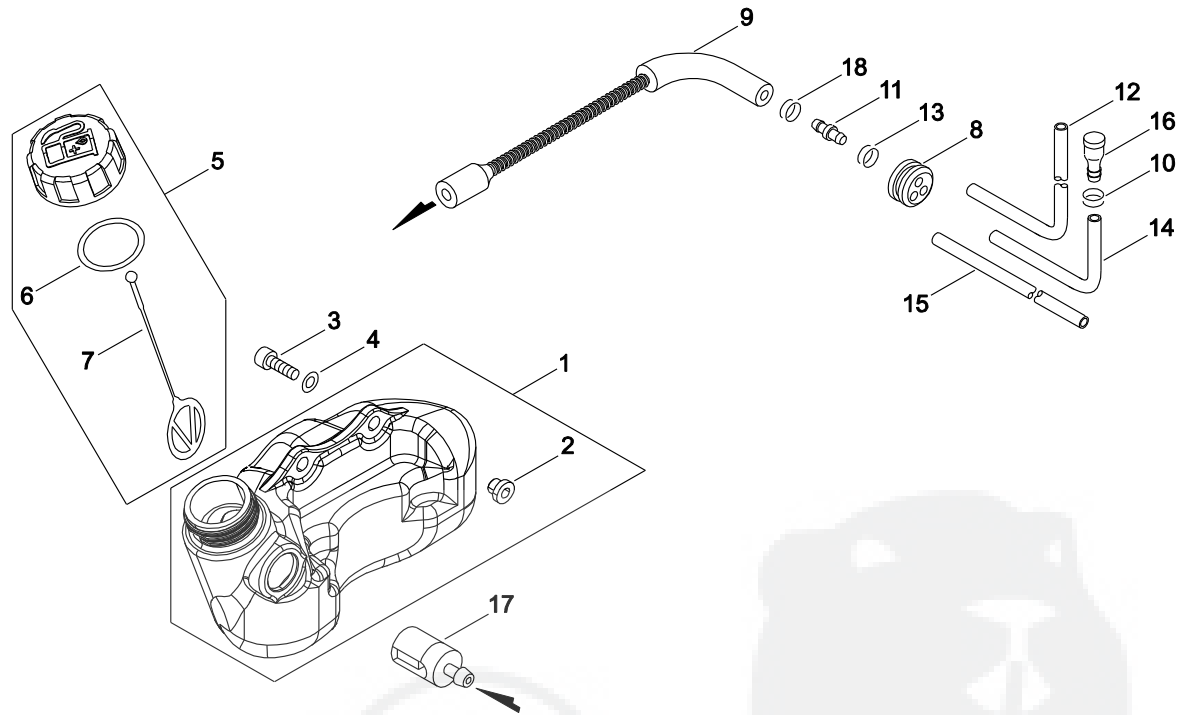
KEY	LV	PART NUMBER	Q'TY	DESCRIPTION	REMARKS	NOTE1	NOTE2
1		A021-004081	1	CARBURETOR,DIAPHRAGM	ZAMA RB-K115		
2	+	P005-000010	1	STRAINER			
3	+	125337-08260	1	VALVE, INLET NEEDLE			
4	+	125338-13930	1	PIN, METERING ARM			
5	+	P005-000940	1	SPRING, METER. LEVER			
6	+	125323-08260	1	ARM, VALVE			
7	+	125339-42030	1	SCREW			
8	+	P005-002050	1	COVER ASY, ROTOR			
9	+	P005-000100	1	SCREW,THROTTLEADJUST			
10	+	125344-13931	3	SCREW			
11	+	P005-002200	1	POST			
12	+	P005-000190	1	E-RING			
13	+	P005-002230	1	DIAPHRAGM ,METERING			
14	+	P005-000200	1	GASKET, METERING			
15	+	125342-52130	1	COVER, DIAPHRAGM			
16	+	125344-52130	3	SCREW			
17	+	P005-000510	1	DIAPHRAGM, PUMP			
18	+	P005-000520	1	GASKET, PUMP			
19	+	P005-001890	1	BASE, ASY PRIMER			
20	+	P005-003110	1	PUMP, PRIMER			
21	+	P005-000250	1	RETAINER			
22	+	P005-001900	4	SCREW			
23	+	P005-000270	1	SCREW			
24	+	P005-000280	1	O-RING			
25	+	P005-001000	1	ROLLER, GUIDE			

5. CARBURETOR



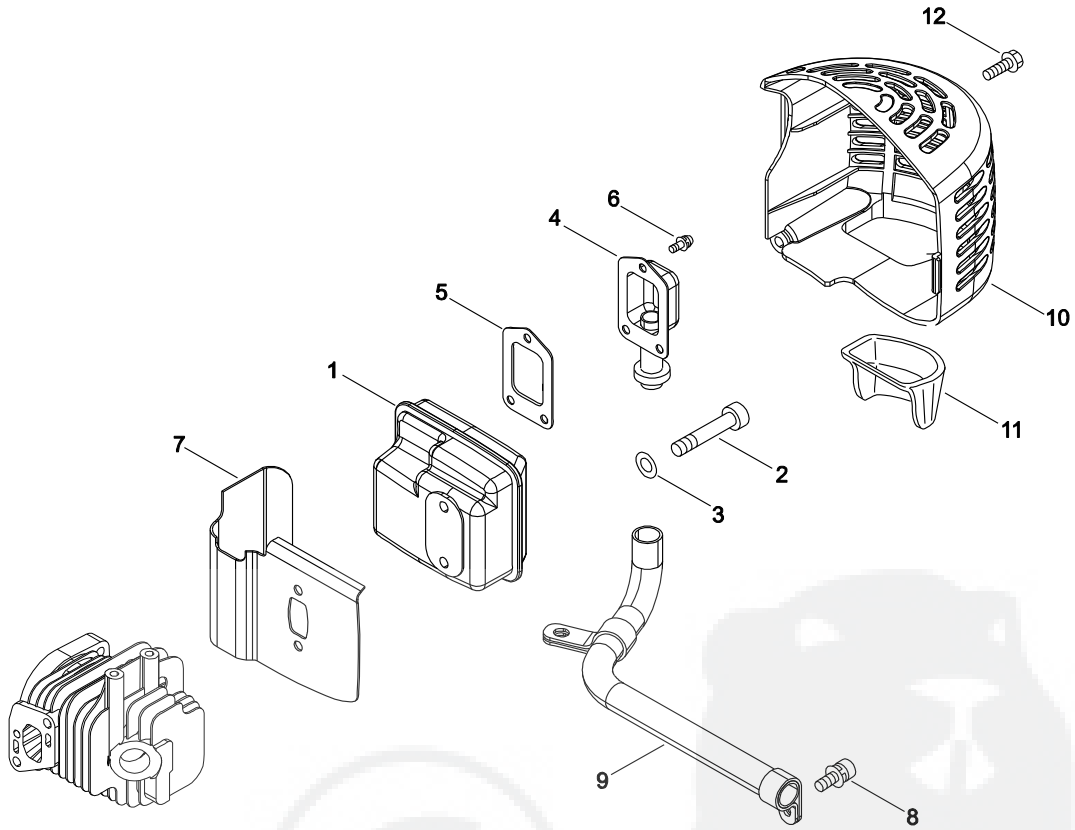
KEY	LV	PART NUMBER	Q'TY	DESCRIPTION	REMARKS	NOTE1	NOTE2
26	+	P005-001250	1	RETAINER,PLUG BALL			
27	+	P005-001260	1	SCREW,MAINN MIXTURE			
28	+	P005-001270	1	PLUG, H AJUST SCREW			

6. FUEL TANK



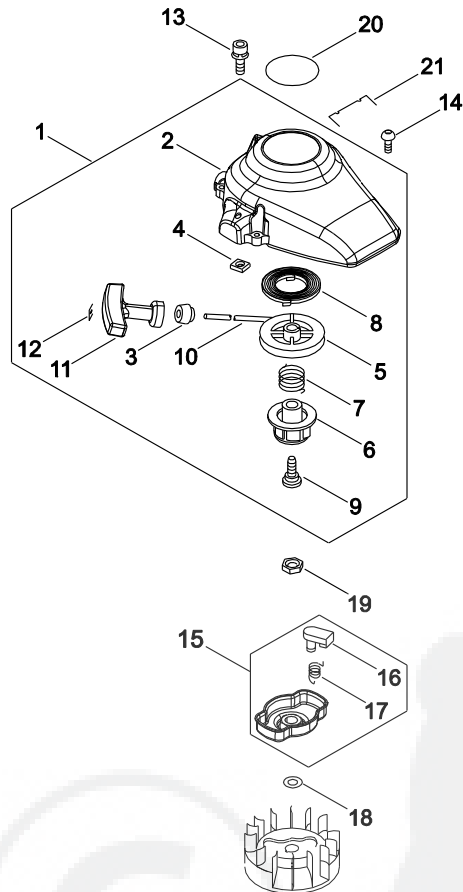
KEY	LV	PART NUMBER	Q'TY	DESCRIPTION	REMARKS	NOTE1	NOTE2
1		A350-000590	1	TANK, FUEL			
2	+	V353-000231	3	COLLAR,5	16*5.5 L6 T2		
3		91118-05020	3	BOLT	CM-5*20		
4		900603-00005	3	WASHER 5	5.5*12*0.8		
5		P021-012210	1	CAP,FUEL ASY			
6	+	131016-55830	1	GASKET, FUEL CAP			
7	+	A365-000060	1	CONNECTOR,CAP	L=123		
8		132115-55930	1	GROMMET, FUEL			
9		132012-12361	1	PIPE			
10		437411-19830	1	CLIP, OIL PIPE			
11		V186-000510	1	JOINT,PIPE			
12		130110-54430	1	PIPE, IMPULSE	3*6*105 NBR		
13		V490-001240	1	CLIP			
14		V471-001880	1	PIPE	3*6*65		
15		132010-40830	1	PIPE 3* 6* 75	3*6*75 YL		
16		A356-000031	1	VALVE,CHECK			
17		131205-07321	1	STRAINER, FUEL			
18		V490-001230	1	CLIP			

7. MUFFLER



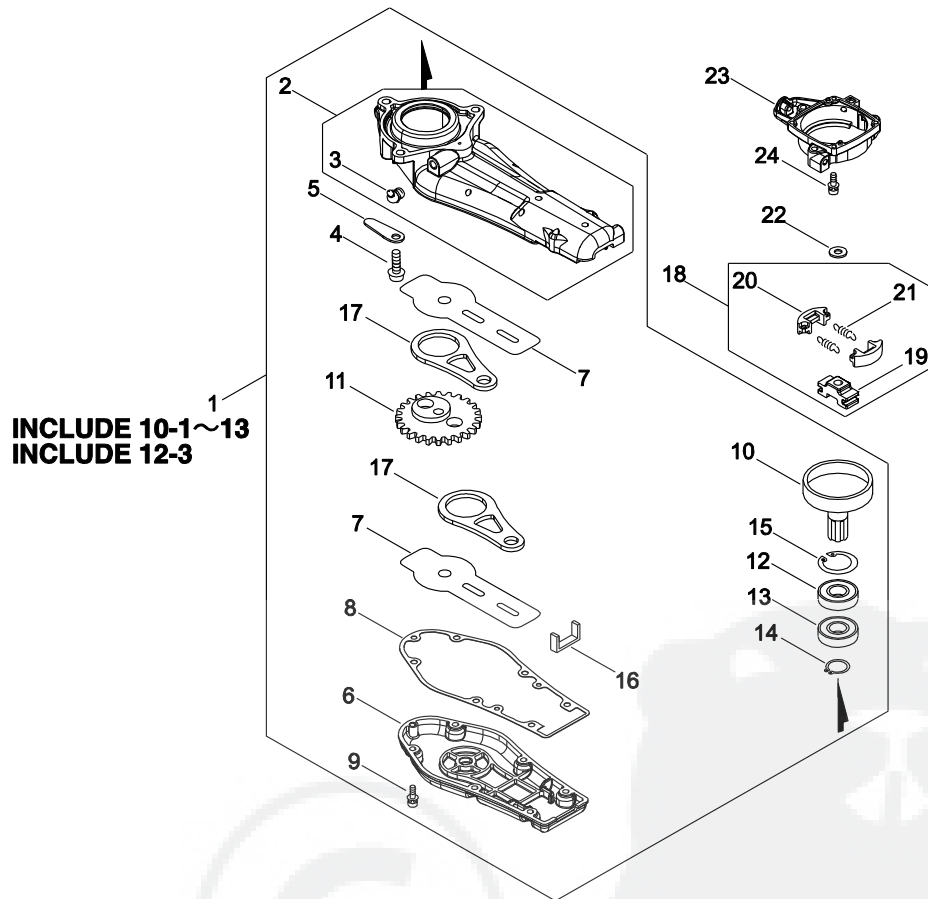
KEY	LV	PART NUMBER	Q'TY	DESCRIPTION	REMARKS	NOTE1	NOTE2
1		145806-42030	1	MUFFLER			
2		900105-05055	2	BOLT, H.S. 5*55	5*55		
3		900600-00005	2	WASHER 5	5		
4		A313-000870	1	GUIDE, EXHAUST			
5		145866-42031	1	GASKET, MUFFLER LID			
6		900242-04010	3	SCREW 4*10	4*10		
7		V104-000850	1	GASKET, EXHAUST	T1.0		
8		91107-04010	1	BOLT, FLANGE	M4*10		
9		A313-000880	1	GUIDE, EXHAUST			
10		A320-000430	1	COVER, MUFFLER			
11		A323-000010	1	PIECE, COVER			
12		91121-05016	2	BOLT, FLANGE	10.9 SILVER		

8. RECOIL STARTER, PULLEY



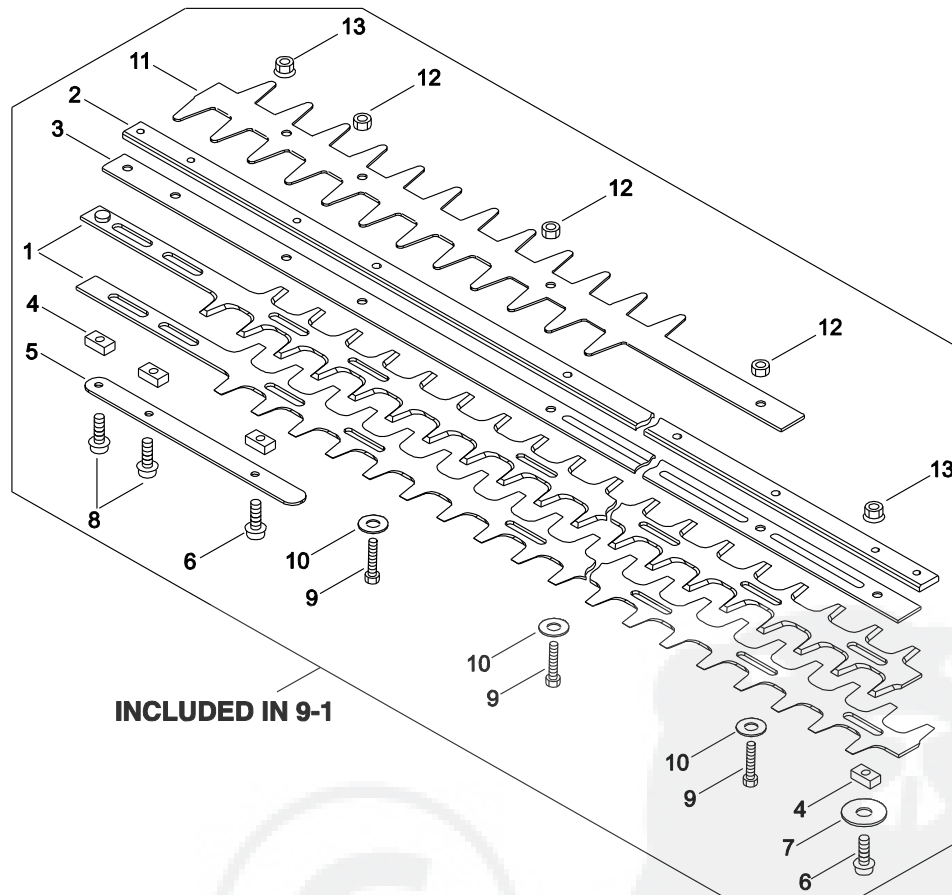
KEY	LV	PART NUMBER	Q'TY	DESCRIPTION	REMARKS	NOTE1	NOTE2
1		A051-001111	1	STARTER,RECOIL ASY			
2	+	P022-037570	1	CASE, STARTER			
3	+	177227-42030	1	GUIDE, ROPE			
4	+	P022-022010	1	NUT			
5	+	P022-034080	1	DRUM			
6	+	P022-034090	1	PLATE			
7	+	P022-007730	1	SPRING,TORSION			
8	+	177220-42030	1	SPRING, REWIND			
9	+	177236-61830	1	SCREW			
10	+	P022-008260	1	ROPE	3M/M		
11	+	177228-27030	1	GRIP, STARTER			
12	+	P022-037670	1	STOPPER, ROPE			
13		V202-000090	4	BOLT,4	4*16		
14		V202-000030	1	BOLT,4			
15		A052-000210	1	PULLEY,ASM STARTER			
16	+	P022-020030	2	PAWL, STARTER			
17	+	P022-007980	2	SPRING, RETURN			
18		900600-00008	1	WASHER 8	8		
19		900512-00008	1	NUT 3N 8 (L-H)	3N 8		
20		X502-000890	1	LABEL,ECHO			
21		X503-007710	1	LABEL,MODEL	HCR-161ES		

9. GEAR CASE



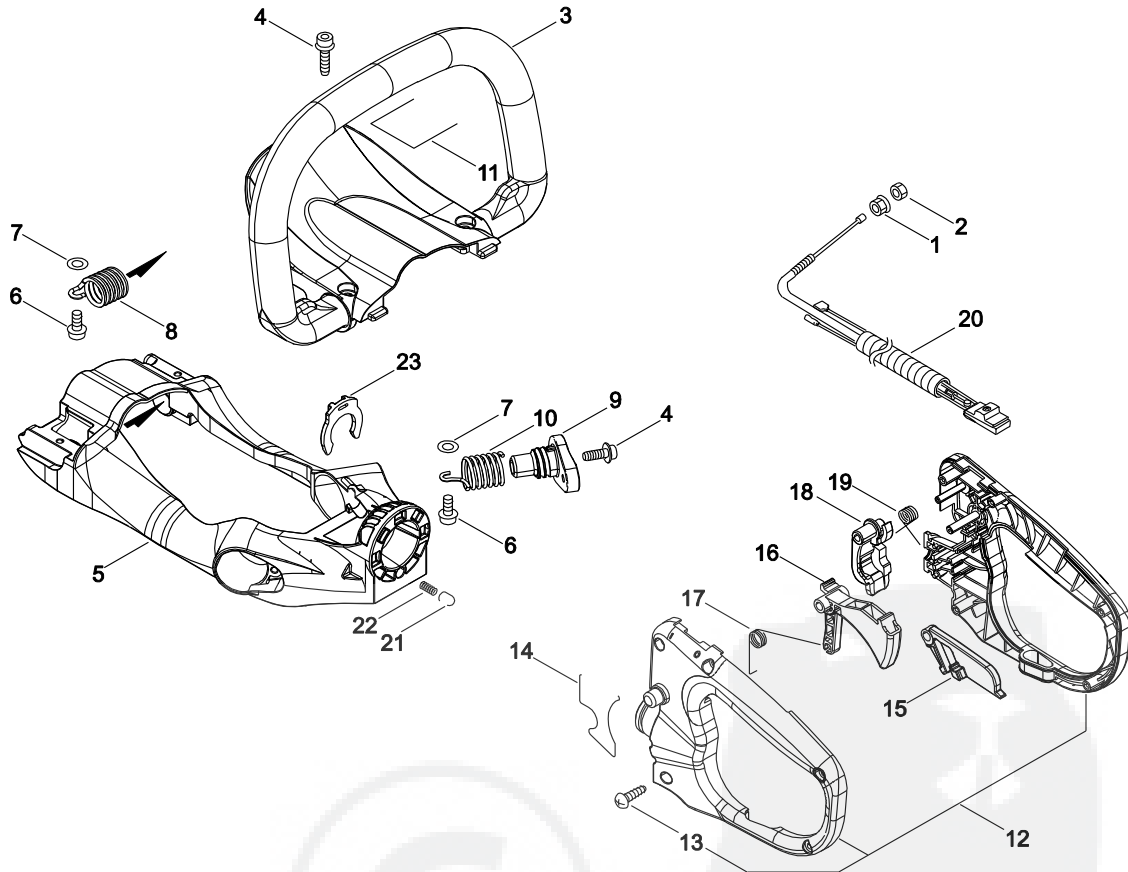
KEY	LV	PART NUMBER	Q'TY	DESCRIPTION	REMARKS	NOTE1	NOTE2
1		P021-041740	1	CASE, GEAR ASY			
2	+	P021-015600	1	CASE, GEAR			
3	++	94984-06075	1	NIPPLE, GREASE	B-MT6*0.75(67.5)		
4	+	91107-06020	3	BOLT HSH FLANGE	M6*20		
5	+	C628-000030	1	PIECE, PLATE			
6	+	C539-000020	1	LID, GEARCASE			
7	+	V150-001810	2	PLATE, EYE	T0.5		
8	+	V110-000060	1	GASKET, GEAR CASE	T0.3		
9	+	91118-04016	6	BOLT	CM-4*14		
10	+	A556-000470	1	DRUM, CLUTCH			
11	+	V650-000300	1	GEAR, SPUR	46T		
12	+	900812-06202	1	BEARING, BALL 6202	6202DDU(LLU)		
13	+	900810-36202	1	BEARING, BALL 6202	6202/C3		
14	+	900701-00014	1	CIRCLIP 14	CS-14		
15	+	900702-00035	1	CIRCLIP 35	CR-35		
16	+	V541-000140	1	SEAL			
17	+	C532-000170	2	ROD, CONNECTING			
18		A056-000190	1	CLUTCH ASY	M8*1.25		
19	+	A552-000080	1	HUB, CLUTCH			
20	+	175017-44331	2	SHOE, CLUTCH			
21	+	A566-000000	2	SPRING, CLUTCH			
22		610350-12360	1	WASHER			
23		A570-000140	1	CASE, CLUTCH			
24		900163-04016	4	BOLT HSH			

10. CUTTER



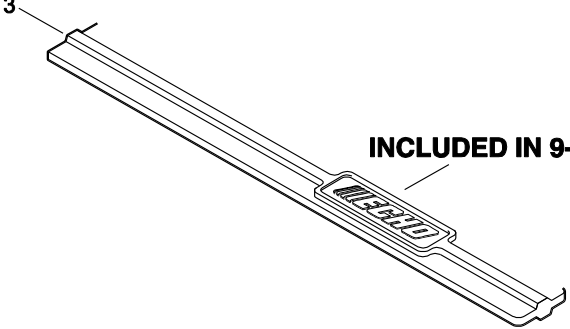
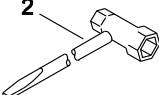
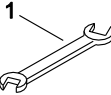
KEY	LV	PART NUMBER	Q'TY	DESCRIPTION	REMARKS	NOTE1	NOTE2
1	+	X411-000570	2	CUTTER			
2	+	X425-000350	1	SUPPORT,CUTTER			
3	+	X425-000840	1	SUPPORT,CUTTER			
4	+	V353-000250	4	COLLAR	9*7.45*5.3		
5	+	V150-001800	1	PLATE,EYE	T2.0		
6	+	91107-05022	2	BOLT, FLANGE	M5*22		
7	+	177214-21860	1	WASHER	5.2*16*1.6T		
8	+	900106-05025	2	BOLT, H.S. 5*25	5*25		
9	+	699115-07760	3	BOLT, CUTTER			
10	+	699118-04560	3	WASHER			
11	+	X431-000110	1	BLUNT	L=522MM T=1.6		
12	+	433022-06460	3	NUT			
13	+	92108-05000	2	NUT, FLANGE			

11. HANDLE



KEY	LV	PART NUMBER	Q'TY	DESCRIPTION	REMARKS	NOTE1	NOTE2
1		900515-00006	1	NUT, FLANGE 6	6		
2		900502-00006	1	NUT 6 (3N)	3N6		
3		C400-000480	1	HANDLE, FRONT			
4		91147-05020	4	BOLT HS FL TAPP			
5		C600-000860	1	FRAME			
6		900106-05016	4	BOLT, H.S. 5*16	5*16		
7		900603-00005	4	WASHER 5	5.5*12*0.8		
8		V450-000620	2	SPRING, COMPRESSION			
9		V456-000040	2	HOLDER, SPRING			
10		V450-000610	2	SPRING, COMPRESSION			
11		X505-002030	1	LABEL, CAUTION	37*35		
12		P021-013051	1	HANDLE SET, REAR			
13	+	900256-04016	5	SCREW 4*16			
14		X532-000740	1	LABEL, OPERATION			
15		C460-000090	1	LOCKOUT, THROTTLE			
16		C450-000250	1	CONTROL, THROTTLE			
17		V452-000300	1	SPRING, TORSION			
18		C427-000020	1	STOPPER, HANDLE			
19		V452-000310	1	SPRING, TORSION			
20		P021-015250	1	CABLE, ASM CONTROL			
21		605611-13360	1	PIN			
22		V450-000630	1	SPRING, COMPRESSION	5.1/3.5		
23		C423-000280	1	FIXTURE, HANDLE			

12. ACCESSORIES



INCLUDED IN 9-1

KEY	LV	PART NUMBER	Q'TY	DESCRIPTION	REMARKS	NOTE1	NOTE2
1		895112-00330	1	SPANNER 8*10			
2		895410-03930	1	WRENCH, W/S. DRIVER			
3	+	X495-000182	1	SCABBARD, BLADE			

Index

Patrs Number	Key No.	Patrs Number	Key No.	Patrs Number	Key No.
100013-11520	1 - 6	900512-00008	8 - 19	A556-000470	9 - 10
100014-08960	1 - 9	900515-00006	11 - 1	A566-000000	9 - 21
100015-04630	1 - 7	900600-00005	7 - 3	A570-000140	9 - 23
100113-05930	1 - 8	900600-00008	8 - 18	C400-000480	11 - 3
100204-52133	2 - 1	900603-00005	6 - 4	C423-000280	11 - 23
100212-42031	2 - 3	900603-00005	11 - 7	C427-000020	11 - 18
100242-42030	2 - 4	900701-00014	9 - 14	C450-000250	11 - 16
125323-08260	5 - 6	900702-00035	9 - 15	C460-000090	11 - 15
125337-08260	5 - 3	900810-36202	9 - 13	C532-000170	9 - 17
125338-13930	5 - 4	900812-06202	9 - 12	C539-000020	9 - 6
125339-42030	5 - 7	91107-04010	7 - 8	C600-000860	11 - 5
125342-52130	5 - 15	91107-05022	10 - 6	C628-000030	9 - 5
125344-13931	5 - 10	91107-06020	9 - 4	P005-000010	5 - 2
125344-52130	5 - 16	91113-04020	3 - 5	P005-000100	5 - 9
129011-52730	4 - 9	91118-04016	9 - 9	P005-000190	5 - 12
130110-54430	6 - 12	91118-05016	2 - 7	P005-000200	5 - 14
131016-55830	6 - 6	91118-05020	6 - 3	P005-000250	5 - 21
131205-07321	6 - 17	91121-05016	1 - 12	P005-000270	5 - 23
132010-40830	6 - 15	91121-05016	7 - 12	P005-000280	5 - 24
132012-12361	6 - 9	91147-05020	11 - 4	P005-000510	5 - 17
132115-55930	6 - 8	92108-05000	10 - 13	P005-000520	5 - 18
145806-42030	7 - 1	94035-36201	2 - 2	P005-000940	5 - 5
145866-42031	7 - 5	94984-06075	9 - 3	P005-001000	5 - 25
175017-44331	9 - 20	A011-000223	1 - 1	P005-001250	5 - 26
177214-21860	10 - 7	A021-004081	4 - 1	P005-001260	5 - 27
177220-42030	8 - 8	A021-004081	5 - 1	P005-001270	5 - 28
177227-42030	8 - 3	A051-001111	8 - 1	P005-001890	5 - 19
177228-27030	8 - 11	A052-000210	8 - 15	P005-001900	5 - 22
177236-61830	8 - 9	A056-000190	9 - 18	P005-002050	5 - 8
433022-06460	10 - 12	A101-000090	1 - 5	P005-002200	5 - 11
437411-19830	6 - 10	A127-000170	2 - 6	P005-002230	5 - 13
605611-13360	11 - 21	A130-000550	1 - 2	P005-003110	5 - 20
610350-12360	9 - 22	A160-000880	1 - 11	P021-007772	1 - 4
699115-07760	10 - 9	A200-000300	4 - 4	P021-012210	6 - 5
699118-04560	10 - 10	A226-001410	4 - 13	P021-013051	11 - 12
890332-52730	4 - 8	A232-000400	4 - 11	P021-015250	11 - 20
895112-00330	12 - 1	A313-000870	7 - 4	P021-015570	4 - 7
895410-03930	12 - 2	A313-000880	7 - 9	P021-015600	9 - 2
900105-05055	7 - 2	A320-000430	7 - 10	P021-041740	9 - 1
900106-05016	11 - 6	A323-000010	7 - 11	P022-007730	8 - 7
900106-05025	10 - 8	A350-000590	6 - 1	P022-007980	8 - 17
900162-05022	1 - 10	A356-000031	6 - 16	P022-008260	8 - 10
900162-05025	4 - 5	A365-000060	6 - 7	P022-020030	8 - 16
900162-05028	2 - 5	A409-000210	3 - 1	P022-022010	8 - 4
900163-04016	9 - 24	A411-000130	3 - 2	P022-034080	8 - 5
900242-04010	7 - 6	A425-000000	3 - 6	P022-034090	8 - 6
900242-05065	4 - 10	A426-000010	3 - 8	P022-037570	8 - 2
900256-04016	11 - 13	A427-000013	3 - 7	P022-037670	8 - 12
900502-00006	11 - 2	A552-000080	9 - 19	V100-000160	1 - 3

Index

Patrs Number	Key No.	Patrs Number	Key No.	Patrs Number	Key No.
V103-000180	4 - 6				
V103-000410	4 - 3				
V104-000850	7 - 7				
V110-000060	9 - 8				
V150-001800	10 - 5				
V150-001810	9 - 7				
V186-000510	6 - 11				
V202-000030	8 - 14				
V202-000090	8 - 13				
V299-000250	4 - 12				
V353-000231	6 - 2				
V353-000250	10 - 4				
V450-000610	11 - 10				
V450-000620	11 - 8				
V450-000630	11 - 22				
V452-000300	11 - 17				
V452-000310	11 - 19				
V456-000040	11 - 9				
V471-001880	6 - 14				
V475-001610	3 - 3				
V485-000870	3 - 4				
V490-001100	4 - 2				
V490-001230	6 - 18				
V490-001240	6 - 13				
V541-000140	9 - 16				
V650-000300	9 - 11				
X411-000570	10 - 1				
X425-000350	10 - 2				
X425-000840	10 - 3				
X431-000110	10 - 11				
X495-000182	12 - 3				
X502-000890	8 - 20				
X503-007710	8 - 21				
X505-002030	11 - 11				
X532-000740	11 - 14				

YAMABIKO CORPORATION

7-2 SUEHIROCHO 1-CHOME, OHME, TOKYO 198-8760, JAPAN
PHONE: 81-428-32-6118. FAX: 81-428-32-6145.



ECHO®

-13L
No. 63-146