

# CS-501SX

Serial Number

C88740000001-C88740999999

Last updated date

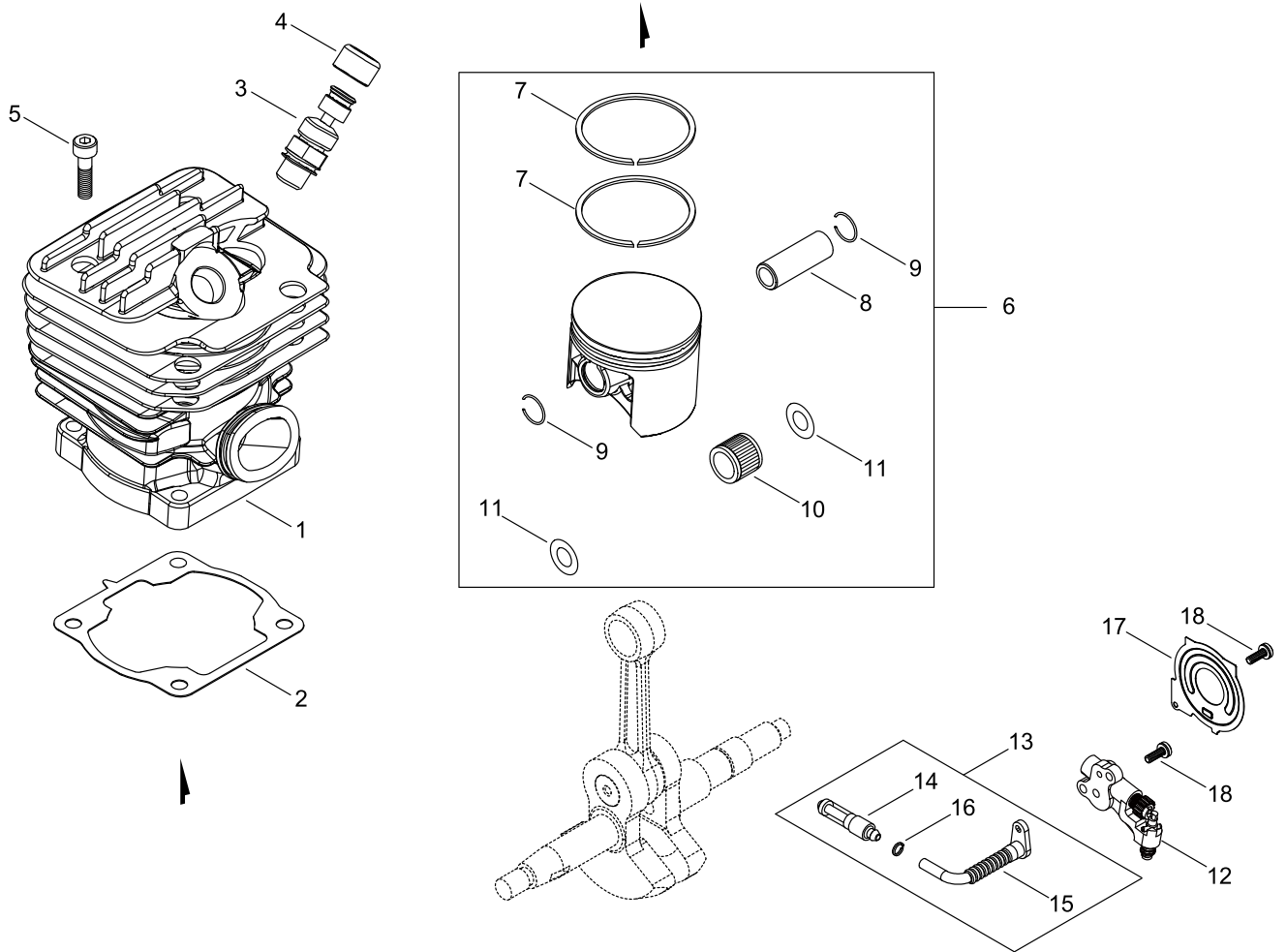
10/Dec/2022

## TABLE OF CONTENTS

---

CYLINDER, PISTON .....	1
CRANKCASE .....	3
MAGNETO.....	5
AIR CLEANER, CARBURETOR.....	7
CARBURETOR.....	9
MUFFLER.....	11
RECOIL STARTER.....	13
HANDLE.....	15
CHAIN BRAKE.....	17
ACCESSORIES .....	19
GUIDE BAR, CHAIN.....	21
OPTION .....	23

# CYLINDER, PISTON



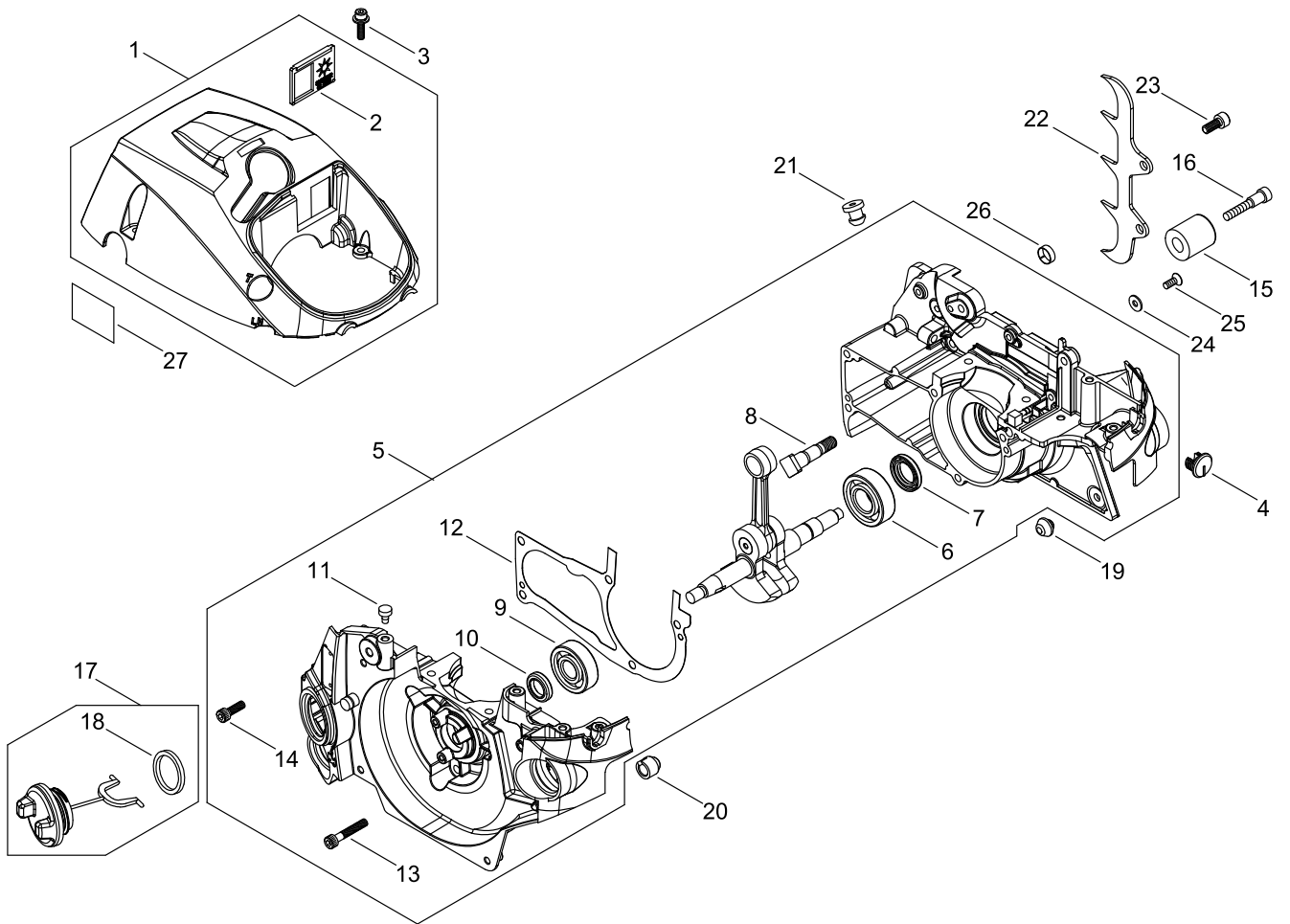
## CYLINDER, PISTON

Key No.	LV (+)	Parts Number	Parts Description	Qty	Standard	Class
1		A130-002280	CYLINDER	1		D
2		V100-000620	GASKET,CYL	1		B
3		A014-000120	RELEASE ASY., COMP.	1		B
4		V141-000090	GROMMET,PLUG	1		B
5		V203-001320	BOLT ADHESIVE	4		C
6		P021-048650	PISTON KIT	1		
7	+	A101-000690	RING, PISTON	2	44*1.2*1.8	B
8	+	V609-000070	PIN,ENG 11	1	11*35.8 HL	D
9	+	V580-000030	RING,END	2	D 1.0	C
10	+	V556-000040	BEARING,NEEDLE 11	1		C
11	+	V308-000040	WASHER,CIRCULAR 11	2	11.2*19.5*0.5	C
12		C022-000221	AUTO-OILER ASSEMBLY	1	ZP05	C
13		C021-000050	STRAINER, OIL	1		B
14	+	C209-000070	STRAINER,OIL	1		B
15	+	V470-001840	PIPE	1		C
16	+	V490-001230	CLIP	1		C
17		C236-000060	COVER,OILER	1		D
18		V202-000520	BOLT,4	3		C

Class : Consumable class

A:Fast moving parts B:Semi-fast moving parts C:Slow moving parts D:Order only as needed

# CRANKCASE



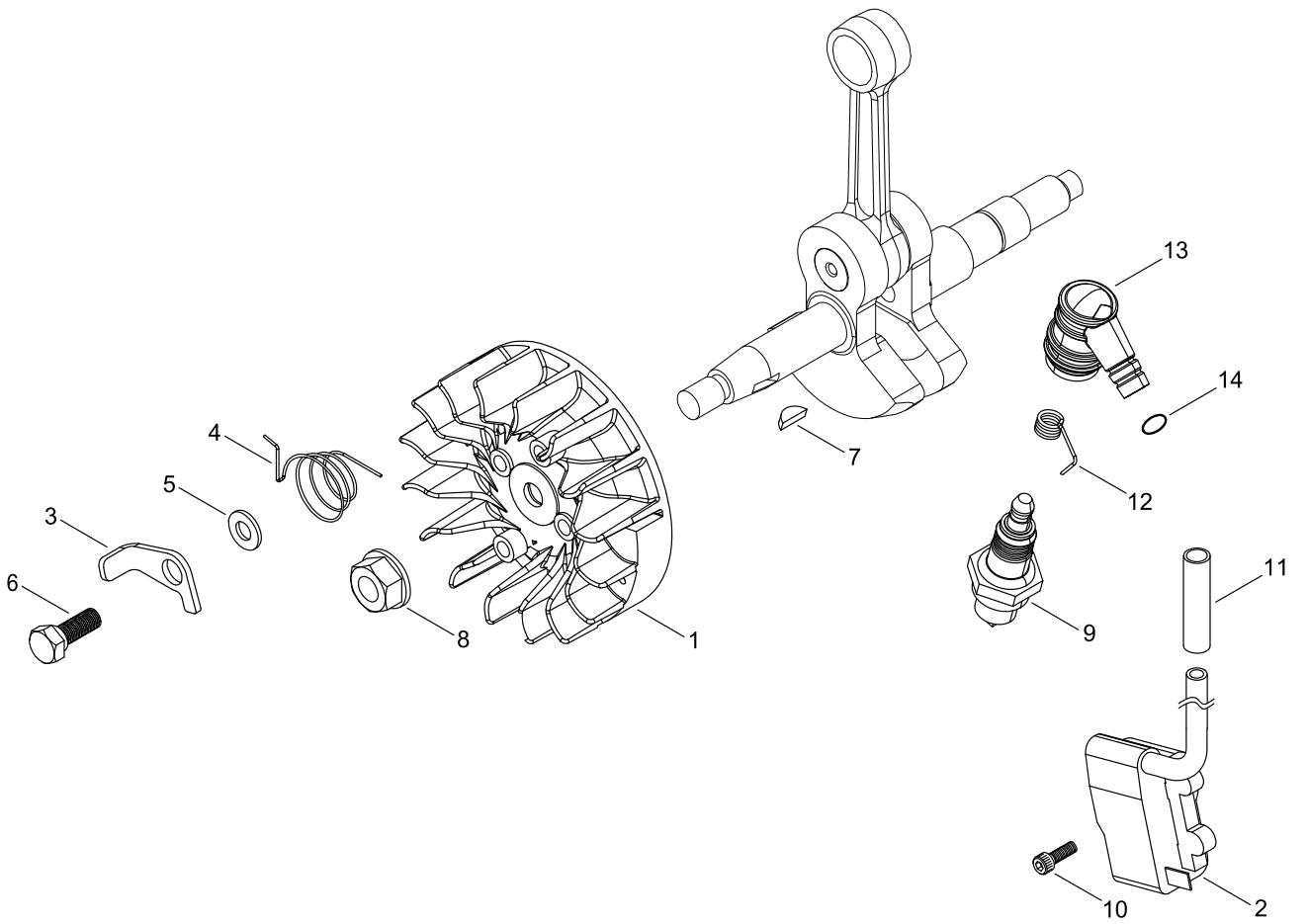
## CRANKCASE

Key No.	LV (+)	Parts Number	Parts Description	Qty	Standard	Class
1		P100-000740	CYLINDER COVER ASY	1		
2	+	A219-000040	SHUTTER,AIR	1		C
3		V202-000690	BOLT,4	3	M4*14	C
4		V141-000100	PLUG	1		B
5		P100-010760	CRANKCASE ASY	1		D
6	+	V592-000290	BEARING, BALL	1	6202X47C3	C
7	+	V508-000070	OIL SEAL	1		C
8	+	V225-000150	BOLT,STUD	2		C
9	+	94035-36201	BEARING, BALL	1	6201	
10	+	V505-000070	OIL SEAL	1		C
11	+	A356-000130	VALVE,CHECK	1		B
12	+	V102-000221	GASKET,CRANKCASE	1		
13	+	V203-001450	BOLT	3		C
14	+	V203-001540	BOLT,ADHESIVE	2		C
15		C310-000110	CATCHER, CHAIN	1		B
16		V203-002410	BOLT,5	1		C
17		C020-000040	CAP	1		B
18	+	V107-000180	GASKET,FUEL CAP	1		A
19		V420-004980	CUSHION	1		B
20		V420-002780	CUSHION	1		B
21		V133-000040	GROMMET	1		C
22		C304-000310	SPIKED	1		C
23		V203-002010	BOLT,5	2		C
24		900603-00004	WASHER	1	4	
25		900212-04008	SCREW	1	4*8	
26		V355-000460	COLLAR,8	1		C
27		890345-39231	LABEL,CAUTION	1		D

Class : Consumable class

A:Fast moving parts B:Semi-fast moving parts C:Slow moving parts D:Order only as needed

# MAGNETO



## MAGNETO

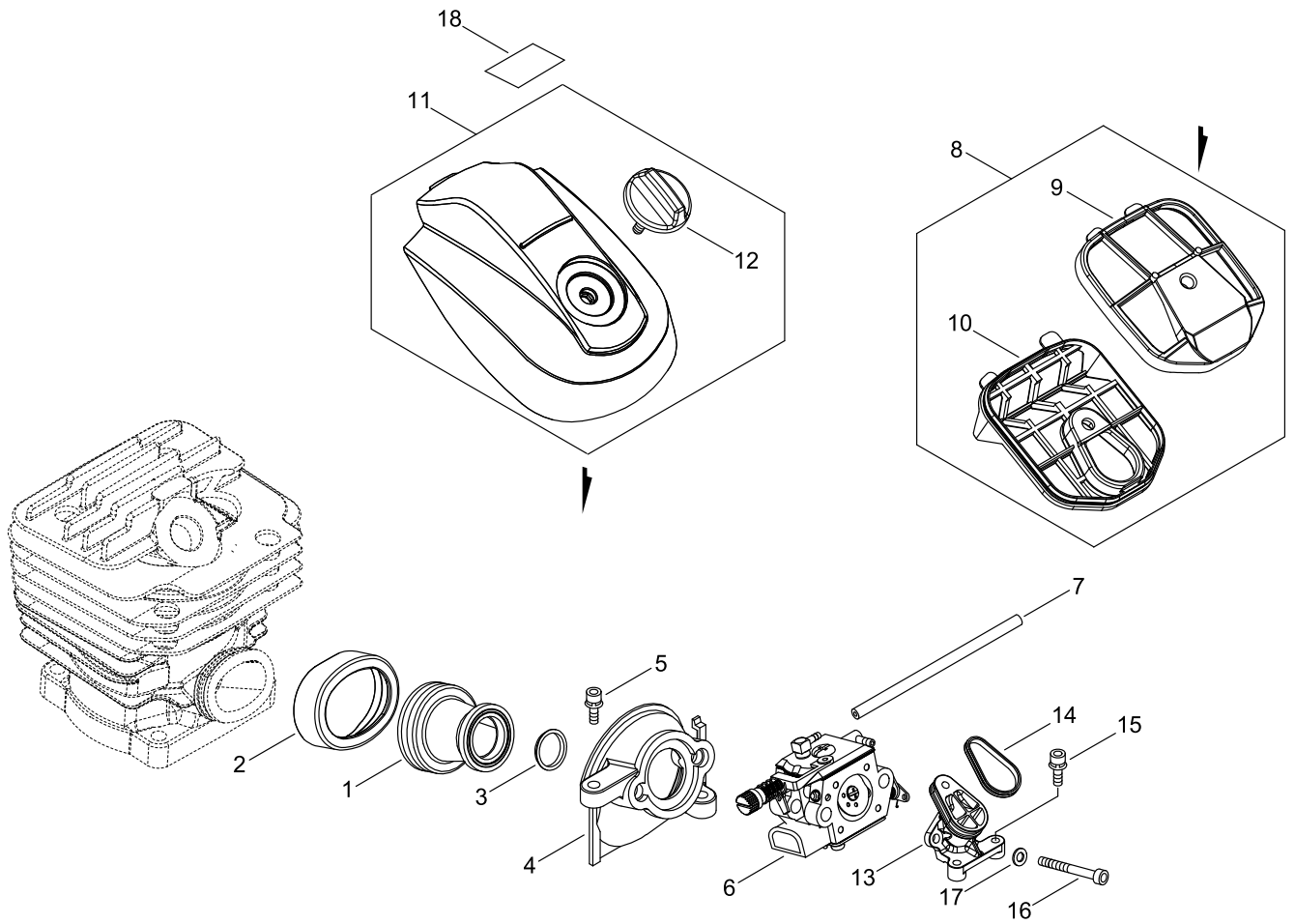
Key No.	LV (+)	Parts Number	Parts Description	Qty	Standard	Class
1		A409-001151	ROTOR,MAGNETO	1		C
2		P021-037431	COIL, IGNITION	1		
3		A514-000220	PAWL	2		C
4		V452-000870	SPRING,TORSION	2		B
5		V304-000270	WASHER,CIRCULAR 6	2		C
6		V204-000620	BOLT	2		C
7		93115-03010	KEY, WOODRUFF	1	3*10	C
8		V265-000220	NUT	1		C
9		A425-000000	SPARKPLUG	1	BPMR8Y	A
10		V202-000540	BOLT,4	2		C
11		V475-005180	TUBE	1		C
12		A426-000040	TERMINAL,SPARKPLUG	1		C
13		A427-000160	PLUG CAP	1		C
14		900720-20007	O-RING	1	P-7	

Class : Consumable class

A:Fast moving parts B:Semi-fast moving parts C:Slow moving parts D:Order only as needed



# AIR CLEANER, CARBURETOR



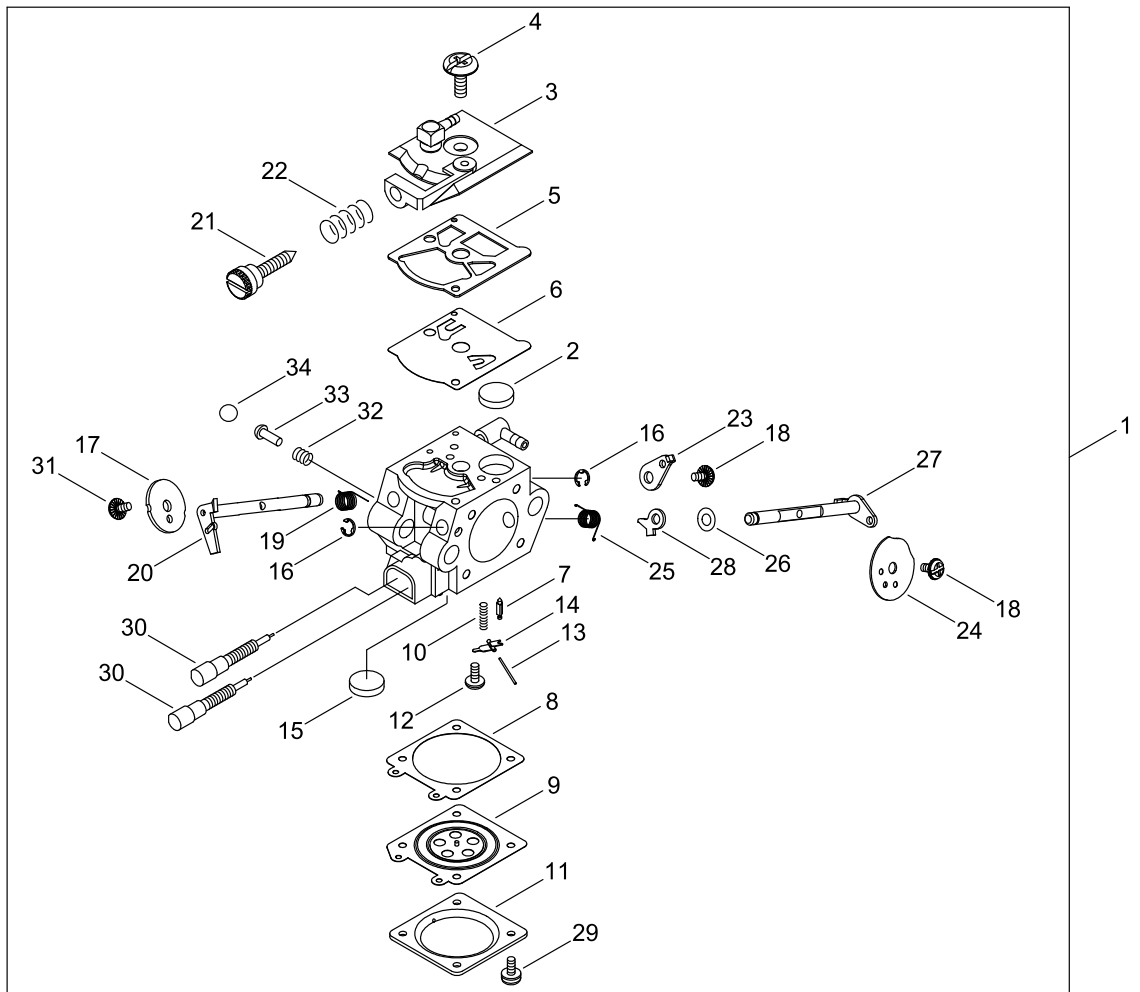
## AIR CLEANER, CARBURETOR

Key No.	LV (+)	Parts Number	Parts Description	Qty	Standard	Class
1		A202-000150	BOOT	1		C
2		A206-000030	HOLDER, BELLOWS	1		C
3		V359-000200	COLLAR	1		C
4		A200-001050	INSULATOR,INTAKE	1		C
5		V202-000200	BOLT	2		C
6		A021-004410	CARBURETOR,DIAPHRAGM	1	WT-1139 D-CUT	B
7		V471-002800	PIPE	1		C
8		A226-001580	ELEMENT,AIR FILTER	1		A
9	+	A226-001590	ELEMENT,AIR FILTER	1		A
10	+	A226-001600	ELEMENT,AIR FILTER	1		A
11		P021-026635	CLEANER COVER ASSY	1		C
12	+	A235-000500	KNOB,CLEANER LID	1		C
13		A204-000220	ELBOW, CARBURETOR	1		C
14		V581-000280	GASKET	1		A
15		V202-000200	BOLT	2		C
16		91100-05048	BOLT HSH	2	5*48	
17		900600-00005	WASHER	2	5	
18		X503-014701	LABEL,MODEL	1	CS-501SX	D

Class : Consumable class

A:Fast moving parts B:Semi-fast moving parts C:Slow moving parts D:Order only as needed

# CARBURETOR



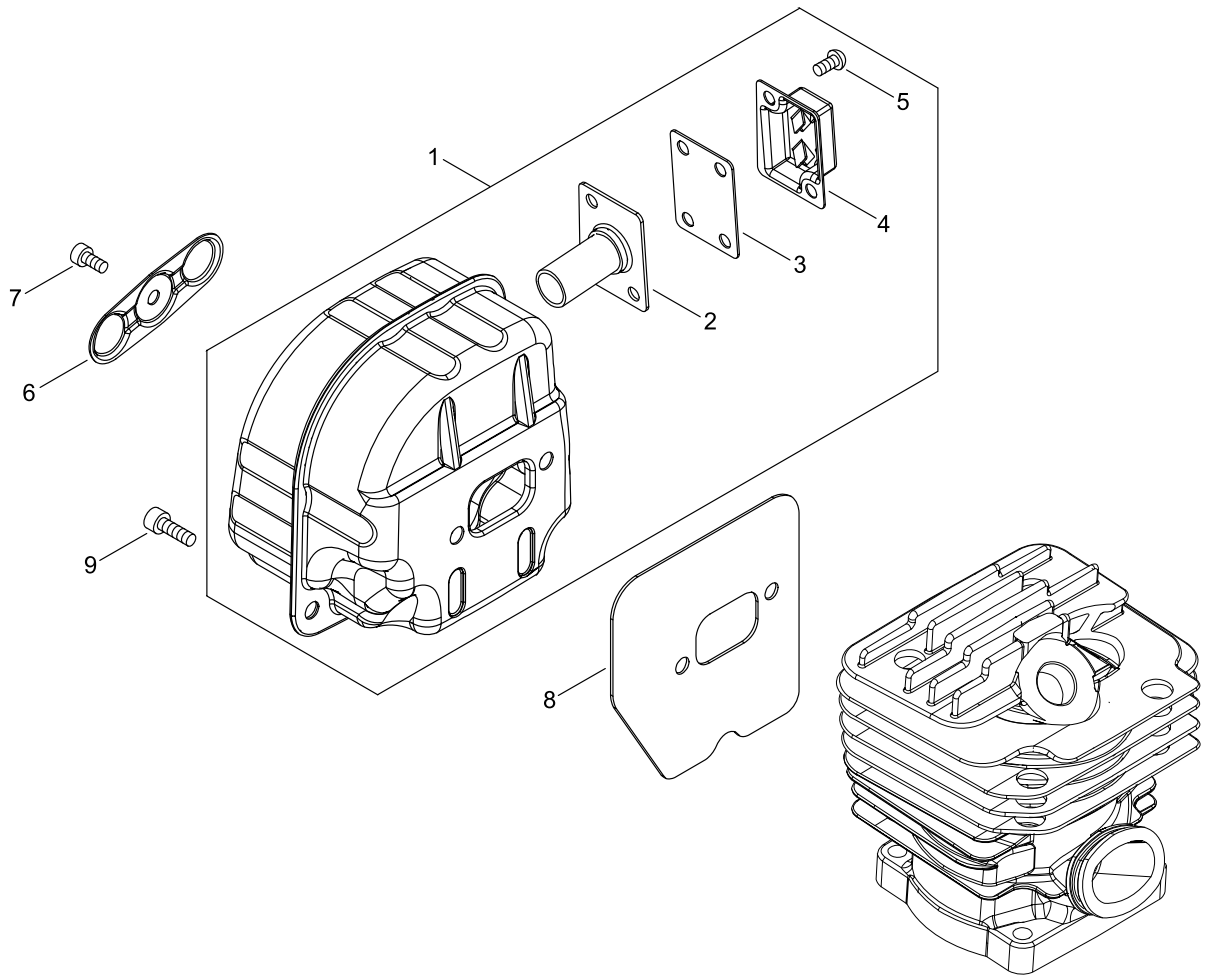
## CARBURETOR

Key No.	LV (+)	Parts Number	Parts Description	Qty	Standard	Class
1		A021-004410	CARBURETOR,DIAPHRAGM	1	WT-1139 D-CUT	B
2	+	123126-10631	SCREEN, INLET	1		B
3	+	P003-005600	PUMP COVER ASY	1		
4	+	123110-03930	SCREW, PUMP COVER	1		D
5	+	123125-15030	GASKET, FUEL PUMP	1		A
6	+	123112-15030	DIAPHRAGM, FUEL PUMP	1		A
7	+	123137-19830	VALVE, INLET NEEDLE	1		D
8	+	123140-03930	GASKET, M. DIAPHRAGM	1		A
9	+	P003-001850	DIAPHRAGM, METERING	1		A
10	+	123122-03660	SPRING, METER. LEVER	1		D
11	+	123142-03930	COVER, M. DIAPHRAGM	1		D
12	+	123139-03930	SCREW, M. LEVER PIN	1		D
13	+	123138-03930	PIN, METERING LEVER	1		D
14	+	123123-03930	LEVER, METERING	1		D
15	+	123146-10631	PLUG, WELCH	1		C
16	+	123127-15030	RING	2		D
17	+	123116-10530	VALVE, THROTTLE	1		
18	+	123114-38830	SCREW	2		D
19	+	123113-37530	SPRING, THROTTLE RTN	1		B
20	+	P003-005620	SHAFT ASSY	1		
21	+	P003-003650	IDEL SCREW	1		
22	+	123133-04260	SPRING, IDLE ADJUST	1		D
23	+	P003-003180	THROTTLE LEVER	1		
24	+	P003-005590	VALVE, CHOKE	1		
25	+	P003-002260	SPRING	1		D
26	+	123149-26030	WASHER	1		D
27	+	P003-003190	SHAFT	1		
28	+	P003-001510	LEVER-FAST IDLE	1		D
29	+	123130-02960	SCREW	4		D
30	+	P003-004460	NEEDLE	2		D
31	+	P003-002380	SCREW	1		D
32	+	123186-09660	SPRING, START VALVE	1		D
33	+	123185-09660	PISTON ASSY	1		D
34	+	123136-09660	BALL	1		D

Class : Consumable class

A:Fast moving parts B:Semi-fast moving parts C:Slow moving parts D:Order only as needed

# MUFFLER



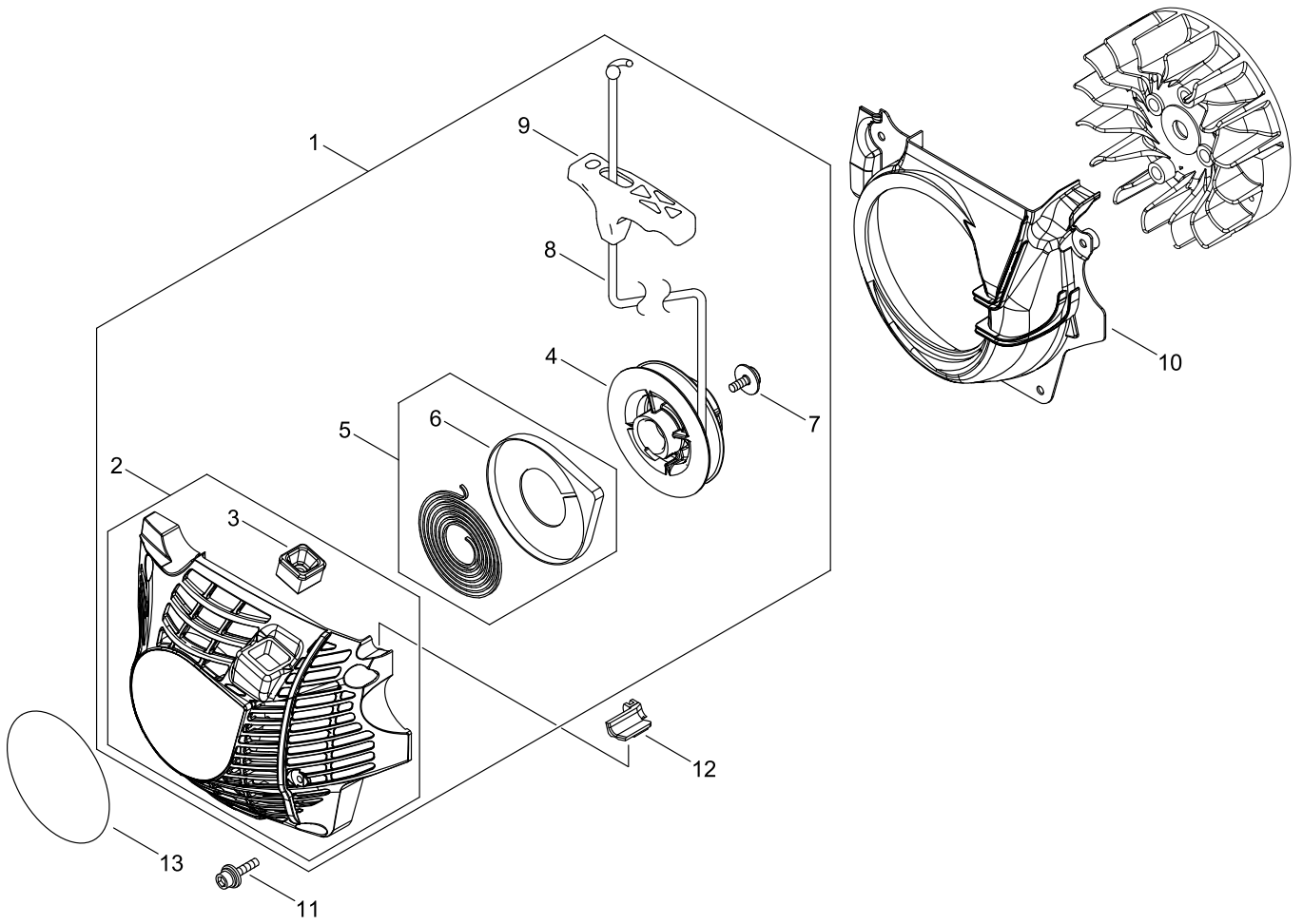
## MUFFLER

Key No.	LV (+)	Parts Number	Parts Description	Qty	Standard	Class
1		P021-048660	MUFFLER ASY	1		
2	+	A313-001481	GUIDE, EXHAUST	1		C
3	+	A310-000450	SCREEN, ARRESTOR	1		B
4	+	A313-002010	GUIDE, EXHAUST	1	ID:2220	C
5	+	91578-04006	SCREW	2	4*6	
6		A301-000060	PLATE, MUFFLER	1		C
7		900105-04006	BOLT HSH	1	4*6	
8		V104-001780	GASKET,EXHAUST	1		A
9		V203-002200	BOLT,5	4	M5X18	C

Class : Consumable class

A:Fast moving parts B:Semi-fast moving parts C:Slow moving parts D:Order only as needed

# RECOIL STARTER



## RECOIL STARTER

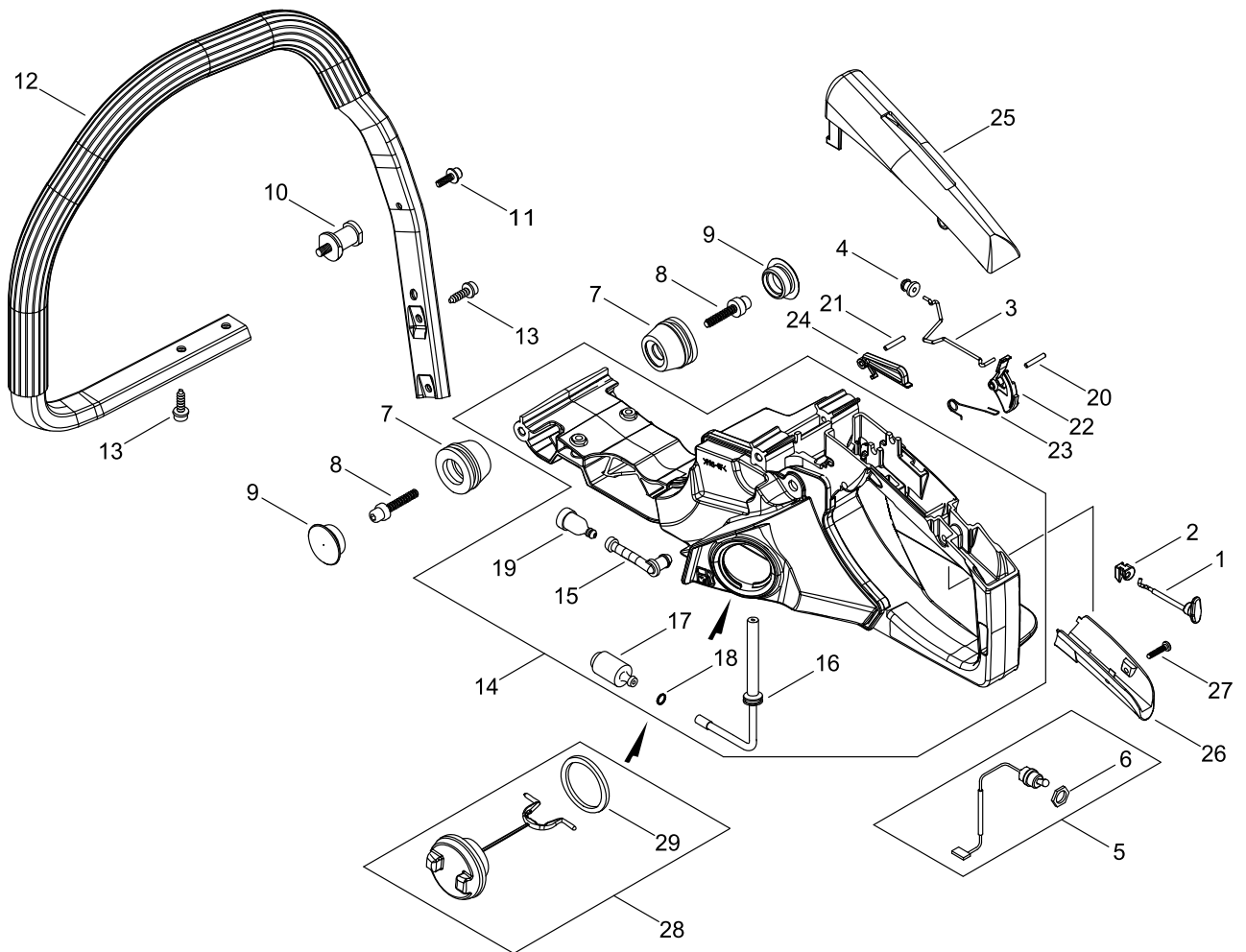
Key No.	LV (+)	Parts Number	Parts Description	Qty	Standard	Class
1		A051-003000	STARTER,RECOIL	1		B
2	+	P022-048790	STARTER,RECOIL	1		
3	++	A510-000130	GUIDE,ROPE	1		C
4	+	P022-039780	DRUM, STARTER	1		
5	+	A504-000190	RECOIL SPRING ASSY	1		C
6	++	A565-000060	HOLDER	1		D
7	+	177236-06910	SCREW	1		
8	+	P022-023100	ROPE, STARTER	1		
9	+	P022-036780	GRIP, STARTER	1		
10		A172-001870	COVER,FAN	1		C
11		V202-000200	BOLT	4		C
12		V131-000190	GROMMET,NEEDLE	1		C
13		X502-000900	LABEL,ECHO	1		D

Class : Consumable class

A:Fast moving parts B:Semi-fast moving parts C:Slow moving parts D:Order only as needed



# HANDLE



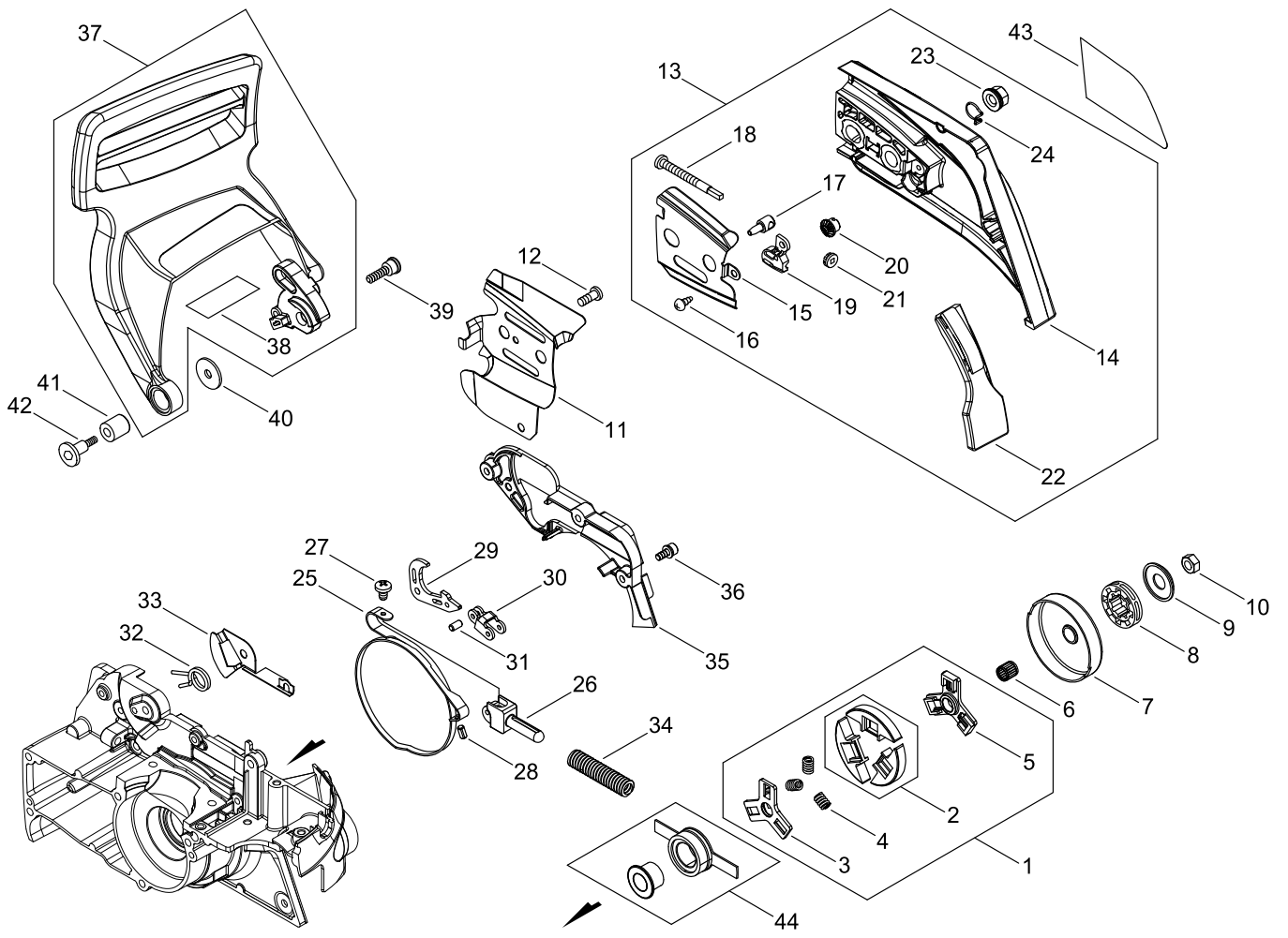
## HANDLE

Key No.	LV (+)	Parts Number	Parts Description	Qty	Standard	Class
1		A240-000111	ROD, CHOKE	1		C
2		V130-000131	GROMMET,CHOKE	1		C
3		C454-000280	ROD,THROTTLE	1		C
4		V133-000040	GROMMET	1		C
5		P021-037400	SWITCH, ON OFF	1		
6	+	V266-000090	NUT,10	1		C
7		V401-000610	CUSHION,5	4		B
8		V203-001950	BOLT,5	4		C
9		V421-000070	CAP,CUSHION	4		C
10		V401-000330	CUSHION	1		B
11		V202-000350	BOLT-SPW	1	M4-14	C
12		C040-000830	HANDLE, FRONT	1		C
13		V203-001490	BOLT TAPPING	4		C
14		P100-011960	HANDLE ASY, REAR	1		C
15	+	V470-001531	PIPE	1	2*5*43	C
16	+	V470-001520	PIPE	1		C
17	+	A369-000450	STRAINER, FUEL	1		A
18	+	V490-000500	CLIP	1		C
19	+	131300-56431	VENT ASSEMBLY, FUEL	1		B
20		93060-40250	PIN, SPRING	1	4*25	
21		93042-40220	PIN, SPRING	1	4*22	
22		C450-000642	CONTROL, THROTTLE	1		C
23		V452-000850	SPRING,TORSION	1		B
24		C460-000391	LOCKOUT,THROTTLE	1		C
25		C411-000170	LID,HANDLE	1		C
26		C403-000530	GRIP	1		C
27		91449-04022	SCREW, TAPPING	1	4*22	C
28		A033-000370	CAP ASSY	1		
29	+	V107-000070	GASKET	1		A

Class : Consumable class

A:Fast moving parts B:Semi-fast moving parts C:Slow moving parts D:Order only as needed

# CHAIN BRAKE



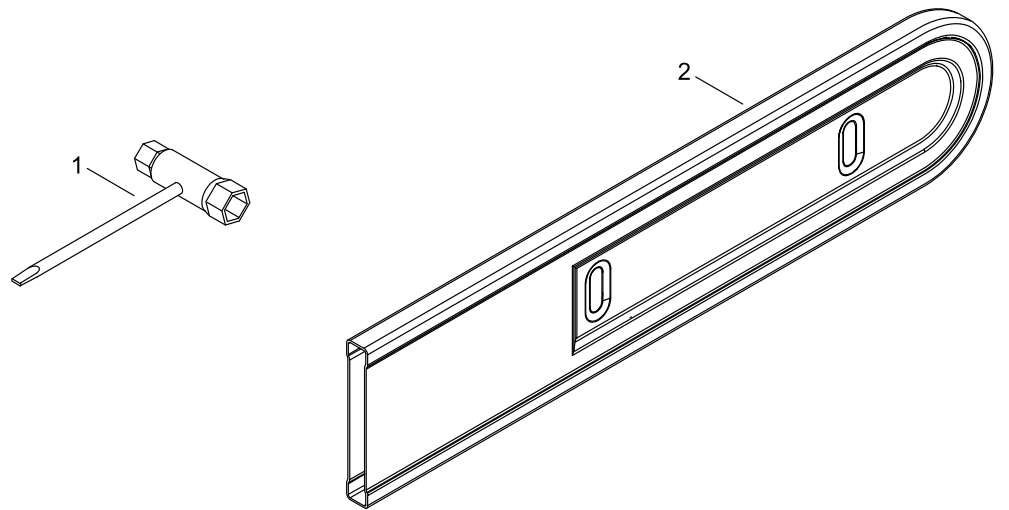
## CHAIN BRAKE

Key No.	LV (+)	Parts Number	Parts Description	Qty	Standard	Class
1		A056-000611	CLUTCH ASY	1		B
2	+	P100-000270	CLUTCH SHOE SET	1		
3	+	A552-000231	HUB, CLUTCH	1		B
4	+	V451-000930	SPRING	3		B
5	+	A552-000241	HUB, CLUTCH	1		B
6		V555-000150	BEARING,NEEDLE	1		B
7		A556-001121	DRUM, CLUTCH	1		B
8		175114-12530	SPROCKET, RIM .325	1		B
9		V307-000451	WASHER,CIRCULAR 10	1		C
10		V265-000211	NUT,8	1		C
11		C305-000411	PLATE,SPROCKET GUARD	1		C
12		V252-000470	SCREW,4	1		C
13		P100-005710	GUARD, SPROCKET ASY	1		
14	+	C300-001040	GUARD, SPROCKET	1		C
15	+	C305-000470	PLATE,SPROCKET GUARD	1	T=0.5	C
16	+	900253-04008	SCREW, TAPPING	1	4*8	
17	+	C309-000190	TENSIONER, CHAIN	1		C
18	+	V203-000021	BOLT,5	1		C
19	+	V355-000840	COLLAR,8	1		C
20	+	V651-001060	GEAR,BEVEL	1		D
21	+	V651-000011	GEAR,BEVEL	1		D
22	+	C302-000030	PROTECTOR	1		B
23	+	V265-000550	NUT,8	2		C
24	+	C649-000420	HOOK	2		D
25		C328-000220	BAND,BRAKE	1		C
26		C334-000180	CONNECTOR,BRAKE	1		C
27		91381-04010	SCREW, TAPPING	1	4*10	
28		93042-40100	PIN, SPRING	1	4*10	
29		C334-000350	CONNECTOR, BRAKE	1		C
30		C334-000200	CONNECTOR,BRAKE	1		C
31		900330-30120	ROLLER	2	3*11.8	
32		V452-000860	SPRING,TORSION	1		B
33		C347-000010	PLATE,BRAKE SEAL	1		C
34		V450-001160	SPRING,COIL	1		B
35		C345-000431	COVER,BRAKE	1		C
36		V202-000490	BOLT	3		C
37		P021-048630	BRAKE LEVER ASY	1		
38	+	V341-000000	WASHER,SQUARE	1		C
39		V203-001470	BOLT,ADHESIVE	1		C
40		V303-000320	WASHER,CIRCULAR 5	1		C
41		J211-000430	BUSH	1		C
42		V203-001410	BOLT ADHESIVE	1		C
43		X502-001020	LABEL,ECHO	1		D
44		P021-023110	GEAR	1		

Class : Consumable class

A:Fast moving parts B:Semi-fast moving parts C:Slow moving parts D:Order only as needed

# ACCESSORIES





## ACCESSORIES

Key No.	LV (+)	Parts Number	Parts Description	Qty	Standard	Class
1		X602-000080	TOOL,WRENCH	1	13*19 L180	D
2		X490-000490	SCABBARD,CHAIN	1		D

Class : Consumable class

A:Fast moving parts B:Semi-fast moving parts C:Slow moving parts D:Order only as needed

## GUIDE BAR, CHAIN

Pitch ピッチ	Gauge ゲージ	Length 長さ	Guide Bar ガイドバー		Saw Chain ソーチェン		Hard Nose ハード ノーズ 	Sprocket Nose スプロケット ノーズ 
			Key №	Type 形式	Key №	Type 形式		
.325 8.26	0.058 1.47	40	A1	V40R21-68AA- ED	A2	21BPX-68E		●
.325 8.26	0.058 1.47	45	B1	V45R21-72AA- ED	B2	21BPX-72E		●
.325 8.26	0.058 1.47	50	C1	V50R21-80AA- ED	C2	21BPX-80E		●
.325 8.26	0.050 1.27	33	D1	Y33R20-56ML- ED	D2	95TXL-56E		●
.325 8.26	0.050 1.27	40	E1	Y40R20-68ML- ED	E2	95TXL-68E		●
.325 8.26	0.050 1.27	45	F1	Y45R20-72AL- ED	F2	95TXL-72E		●
.325 8.26	0.050 1.27	50	G1	Y50R20-80AL- ED	G2	95TXL-80E		●
.325 8.26	0.058 1.47	45	H1	V45R21-72AA1 ET	H2	21BPX-72E		●
.325 8.26	0.050 1.27	45	I1	V45R20-72AA1 ET	I2	95TXL-72E		●

## GUIDE BAR, CHAIN

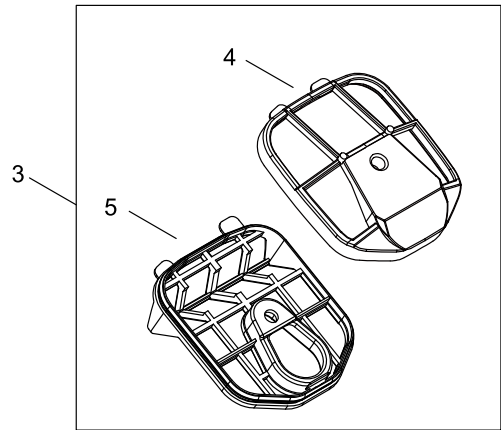
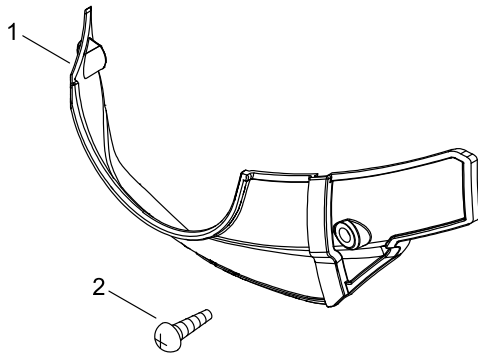
Key No.	LV (+)	Parts Number	Parts Description	Qty	Standard	Class
A1		X124-000691	BAR,GUIDE 40	1	V40R21-68AA- ED	A
A2		431711-38331	CHAIN, SAW	1	21BPX-68E	A
B1		X125-000351	BAR,GUIDE 45	1	V45R21-72AA- ED	A
B2		431717-30231	CHAIN, SAW	1	21BPX-72E	A
C1		X126-000291	BAR,GUIDE 50	1	V50R21-80AA- ED	A
C2		431712-30231	CHAIN, SAW	1	21BPX-80E	A
D1		X122-000470	BAR,GUIDE 30	1	Y33R20-56ML- ED	A
D2		X242-000010	CHAIN,SAW	1	95TXL-56E	A
E1		X124-000770	BAR,GUIDE 40	1	Y40R20-68ML- ED	A
E2		X244-000110	CHAIN,SAW	1	95TXL-68E	A
F1		X125-000490	BAR,GUIDE 45	1	Y45R20-72AL- ED	A
F2		X245-000060	CHAIN,SAW	1	95TXL-72E	A
G1		X126-000450	BAR,GUIDE 50	1	Y50R20-80AL- ED	
G2		X246-000140	CHAIN,SAW	1	95TXL-80E	
H1		430517-30134	BAR, GUIDE45RV58-325	1	V45R21-72AA1 ET	A
H2		431717-30231	CHAIN, SAW	1	21BPX-72E	A
I1		X125-000251	BAR,GUIDE 45	1	V45R20-72AA1 ET	A
I2		X245-000060	CHAIN,SAW	1	95TXL-72E	A

Class : Consumable class

A:Fast moving parts B:Semi-fast moving parts C:Slow moving parts D:Order only as needed



OPTION



## OPTION

Key No.	LV (+)	Parts Number	Parts Description	Qty	Standard	Class
1		C418-000140	SHIELD, SNOW	1		C
2		91374-04008	SCREW, TAPPING	2	4*8	
3		A226-001090	AIR CLEANER ASSY	1		A
4	+	A226-001100	AIR CLEANER UPPER	1		A
5	+	A226-001110	AIR CLEANER LOWER	1		A

Class : Consumable class

A:Fast moving parts B:Semi-fast moving parts C:Slow moving parts D:Order only as needed

# NUMERICAL PARTS INDEX

Part No	Part description	Page	Part No	Part description	Page	Part No	Part description	Page
123110-03930	SCREW, PUMP COVER	10	93060-40250	PIN, SPRING	16	C022-000221	AUTO-OILER ASSEMBLY	2
123112-15030	DIAPHRAGM, FUEL PUMP	10	93115-03010	KEY, WOODRUFF	6	C040-000830	HANDLE, FRONT	16
123113-37530	SPRING, THROTTLE RTN	10	94035-36201	BEARING, BALL	4	C209-000070	STRAINER,OIL	2
123114-38830	SCREW	10	A014-000120	RELEASE ASY., COMP.	2	C236-000060	COVER,OILER	2
123116-10530	VALVE, THROTTLE	10	A021-004410	CARBURETOR, DIAPHRAGM	8	C300-001040	GUARD, SPROCKET	18
123122-03660	SPRING, METER. LEVER	10	A021-004410	CARBURETOR, DIAPHRAGM	10	C302-000030	PROTECTOR	18
123123-03930	LEVER, METERING	10	A033-000370	CAP ASSY	16	C304-000310	SPIKED	4
123125-15030	GASKET, FUEL PUMP	10	A051-003000	STARTER,RECOIL	14	C305-000411	PLATE,SPROCKET GUARD	18
123126-10631	SCREEN, INLET	10	A056-000611	CLUTCH ASY	18	C305-000470	PLATE,SPROCKET GUARD	18
123127-15030	RING	10	A101-000690	RING, PISTON	2	C309-000190	TENSIONER, CHAIN	18
123130-02960	SCREW	10	A130-002280	CYLINDER	2	C310-000110	CATCHER, CHAIN	4
123133-04260	SPRING, IDLE ADJUST	10	A172-001870	COVER,FAN	14	C328-000220	BAND,BRAKE	18
123136-09660	BALL	10	A200-001050	INSULATOR,INTAKE	8	C334-000180	CONNECTOR,BRAKE	18
123137-19830	VALVE, INLET NEEDLE	10	A202-000150	BOOT	8	C334-000200	CONNECTOR,BRAKE	18
123138-03930	PIN, METERING LEVER	10	A204-000220	ELBOW, CARBURETOR	8	C334-000350	CONNECTOR, BRAKE	18
123139-03930	SCREW, M. LEVER PIN	10	A206-000030	HOLDER, BELLOWS	8	C345-000431	COVER,BRAKE	18
123140-03930	GASKET, M. DIAPHRAGM	10	A219-000040	SHUTTER,AIR	4	C347-000010	PLATE,BRAKE SEAL	18
123142-03930	COVER, M. DIAPHRAGM	10	A226-001090	AIR CLEANER ASSY	24	C403-000530	GRIP	16
123146-10631	PLUG, WELCH	10	A226-001100	AIR CLEANER UPPER	24	C411-000170	LID,HANDLE	16
123149-26030	WASHER	10	A226-001110	AIR CLEANER LOWER	24	C418-000140	SHIELD, SNOW	24
123185-09660	PISTON ASSY	10	A226-001580	ELEMENT,AIR FILTER	8	C450-000642	CONTROL, THROTTLE	16
123186-09660	SPRING, START VALVE	10	A226-001590	ELEMENT,AIR FILTER	8	C454-000280	ROD,THROTTLE	16
131300-56431	VENT ASSEMBLY, FUEL	16	A226-001600	ELEMENT,AIR FILTER	8	C460-000391	LOCKOUT,THROTTLE	16
175114-12530	SPROCKET, RIM .325	18	A235-000500	KNOB,CLEANER LID	8	C649-000420	HOOK	18
177236-06910	SCREW	14	A240-000111	ROD, CHOKE	16	J211-000430	BUSH	18
430517-30134	BAR, GUIDE45RV58-325	22	A301-000060	PLATE, MUFFLER	12	P003-001510	LEVER-FAST IDLE	10
431711-38331	CHAIN, SAW	22	A310-000450	SCREEN, ARRESTOR	12	P003-001850	DIAPHRAGM, METERING	10
431712-30231	CHAIN, SAW	22	A313-001481	GUIDE, EXHAUST	12	P003-002260	SPRING	10
431717-30231	CHAIN, SAW	22	A313-002010	GUIDE, EXHAUST	12	P003-002380	SCREW	10
890345-39231	LABEL,CAUTION	4	A356-000130	VALVE,CHECK	4	P003-003180	THROTTLE LEVER	10
900105-04006	BOLT HSH	12	A369-000450	STRAINER, FUEL	16	P003-003190	SHAFT	10
900212-04008	SCREW	4	A409-001151	ROTOR,MAGNETO	6	P003-003650	IDEL SCREW	10
900253-04008	SCREW, TAPPING	18	A425-000000	SPARKPLUG	6	P003-004460	NEEDLE	10
900330-30120	ROLLER	18	A426-000040	TERMINAL,SPARKPLUG	6	P003-005590	VALVE, CHOKE	10
900600-00005	WASHER	8	A427-000160	PLUG CAP	6	P003-005600	PUMP COVER ASY	10
900603-00004	WASHER	4	A504-000190	RECOIL SPRING ASSY	14	P003-005620	SHAFT ASSY	10
900720-20007	O-RING	6	A510-000130	GUIDE,ROPE	14	P021-023110	GEAR	18
91100-05048	BOLT HSH	8	A514-000220	PAWL	6	P021-026635	CLEANER COVER ASSY	8
91374-04008	SCREW, TAPPING	24	A552-000231	HUB, CLUTCH	18	P021-037400	SWITCH, ON OFF	16
91381-04010	SCREW, TAPPING	18	A552-000241	HUB, CLUTCH	18	P021-037431	COIL, IGNITION	6
91449-04022	SCREW, TAPPING	16	A556-001121	DRUM, CLUTCH	18	P021-048630	BRAKE LEVER ASY	18
91578-04006	SCREW	12	A565-000060	HOLDER	14	P021-048650	PISTON KIT	2
93042-40100	PIN, SPRING	18	C020-000040	CAP	4	P021-048660	MUFFLER ASY	12
93042-40220	PIN, SPRING	16	C021-000050	STRAINER, OIL	2	P022-023100	ROPE, STARTER	14

# NUMERICAL PARTS INDEX

Part No	Part description	Page	Part No	Part description	Page	Part No	Part description	Page
P022-036780	GRIP, STARTER	14	V304-000270	WASHER,CIRCULAR 6	6	X246-000140	CHAIN,SAW	22
P022-039780	DRUM, STARTER	14	V307-000451	WASHER,CIRCULAR 10	18	X490-000490	SCABBARD,CHAIN	20
P022-048790	STARTER,RECOIL	14	V308-000040	WASHER,CIRCULAR 11	2	X502-000900	LABEL,ECHO	14
P100-000270	CLUTCH SHOE SET	18	V341-000000	WASHER,SQUARE	18	X502-001020	LABEL,ECHO	18
P100-000740	CYLINDER COVER ASY	4	V355-000460	COLLAR,8	4	X503-014701	LABEL,MODEL	8
P100-005710	GUARD, SPROCKET ASY	18	V355-000840	COLLAR,8	18	X602-000080	TOOL,WRENCH	20
P100-010760	CRANKCASE ASY	4	V359-000200	COLLAR	8			
P100-011960	HANDLE ASY, REAR	16	V401-000330	CUSHION	16			
V100-000620	GASKET,CYL	2	V401-000610	CUSHION,5	16			
V102-000221	GASKET,CRANKCASE	4	V420-002780	CUSHION	4			
V104-001780	GASKET,EXHAUST	12	V420-004980	CUSHION	4			
V107-000070	GASKET	16	V421-000070	CAP,CUSHION	16			
V107-000180	GASKET,FUEL CAP	4	V450-001160	SPRING,COIL	18			
V130-000131	GROMMET,CHOKE	16	V451-000930	SPRING	18			
V131-000190	GROMMET,NEEDLE	14	V452-000850	SPRING,TORSION	16			
V133-000040	GROMMET	4	V452-000860	SPRING,TORSION	18			
V133-000040	GROMMET	16	V452-000870	SPRING,TORSION	6			
V141-000090	GROMMET,PLUG	2	V470-001520	PIPE	16			
V141-000100	PLUG	4	V470-001531	PIPE	16			
V202-000200	BOLT	8	V470-001840	PIPE	2			
V202-000200	BOLT	14	V471-002800	PIPE	8			
V202-000350	BOLT-SPW	16	V475-005180	TUBE	6			
V202-000490	BOLT	18	V490-000500	CLIP	16			
V202-000520	BOLT,4	2	V490-001230	CLIP	2			
V202-000540	BOLT,4	6	V505-000070	OIL SEAL	4			
V202-000690	BOLT,4	4	V508-000070	OIL SEAL	4			
V203-000021	BOLT,5	18	V555-000150	BEARING,NEEDLE	18			
V203-001320	BOLT ADHESIVE	2	V556-000040	BEARING,NEEDLE 11	2			
V203-001410	BOLT ADHESIVE	18	V580-000030	RING,END	2			
V203-001450	BOLT	4	V581-000280	GASKET	8			
V203-001470	BOLT,ADHESIVE	18	V592-000290	BEARING, BALL	4			
V203-001490	BOLT TAPPING	16	V609-000070	PIN,ENG 11	2			
V203-001540	BOLT,ADHESIVE	4	V651-000011	GEAR,BEVEL	18			
V203-001950	BOLT,5	16	V651-001060	GEAR,BEVEL	18			
V203-002010	BOLT,5	4	X122-000470	BAR,GUIDE 30	22			
V203-002200	BOLT,5	12	X124-000691	BAR,GUIDE 40	22			
V203-002410	BOLT,5	4	X124-000770	BAR,GUIDE 40	22			
V204-000620	BOLT	6	X125-000251	BAR,GUIDE 45	22			
V225-000150	BOLT,STUD	4	X125-000351	BAR,GUIDE 45	22			
V252-000470	SCREW,4	18	X125-000490	BAR,GUIDE 45	22			
V265-000211	NUT,8	18	X126-000291	BAR,GUIDE 50	22			
V265-000220	NUT	6	X126-000450	BAR,GUIDE 50	22			
V265-000550	NUT,8	18	X242-000010	CHAIN,SAW	22			
V266-000090	NUT,10	16	X244-000110	CHAIN,SAW	22			
V303-000320	WASHER,CIRCULAR 5	18	X245-000060	CHAIN,SAW	22			