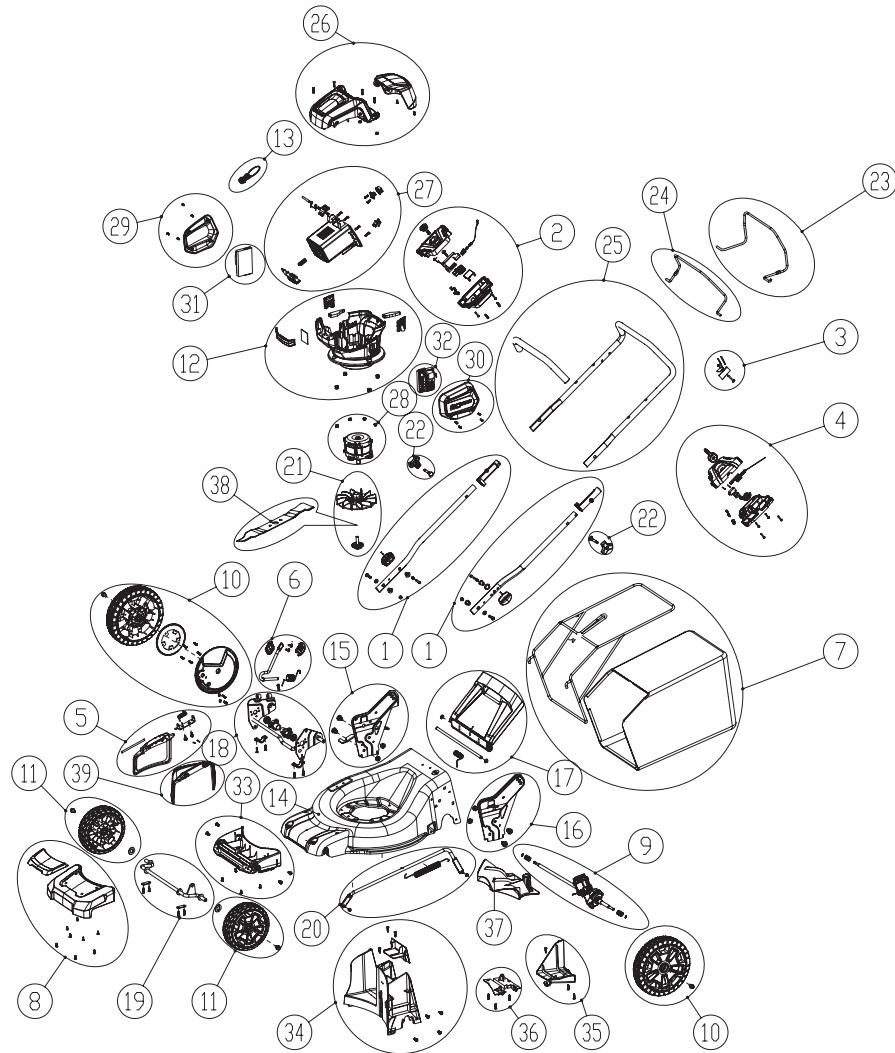


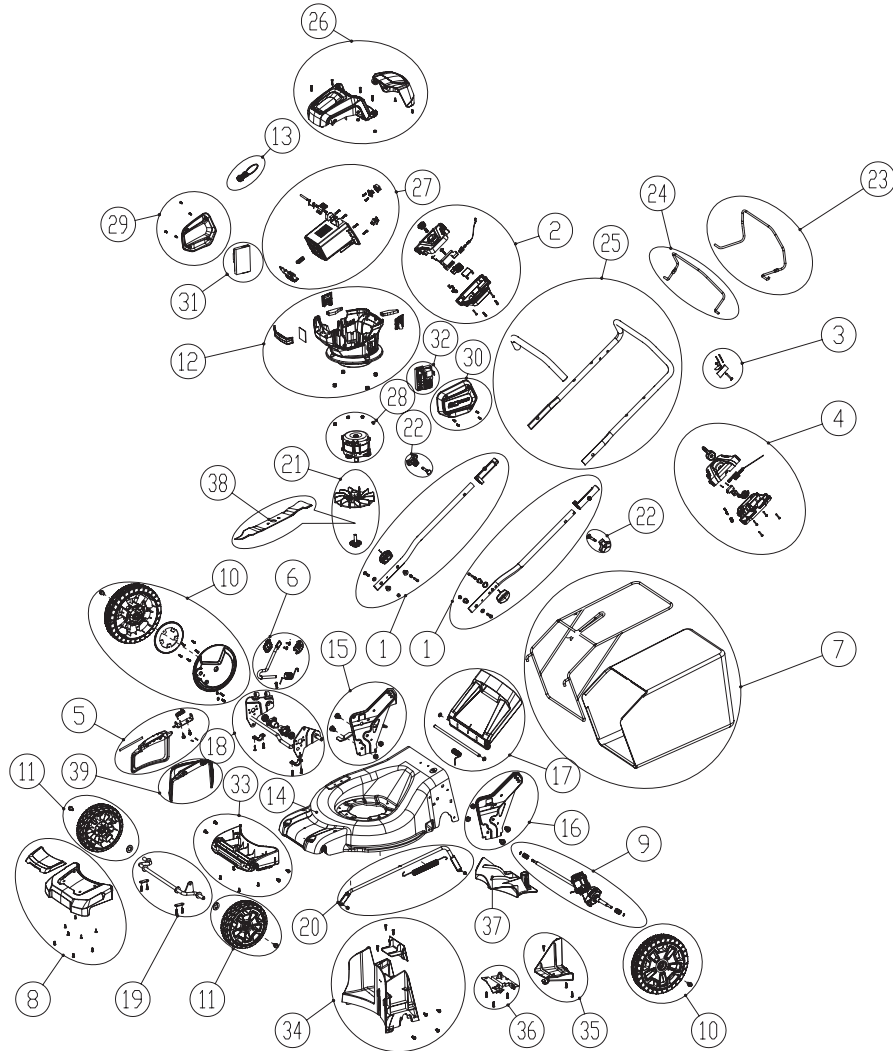
# Lawn Mower 82 LMS46S 2500586




POSITION	PNC	DESCRIPTION	QTY	UOM
1	RA311112385	Down push rod assembly -make set as 2 pcs	1	set
1-1		Lock nut M8	1	pcs
1-2		Hexagonal socket cup head bolt M8X30	1	pcs
1-3		Flat washer M8 (8.4-16-1.6)	1	pcs
1-4		Knob compression spring	1	pcs
1-5		Spring pin	1	pcs
1-6		Handle-rod stop post	1	pcs
1-7		Handle-rod stop post holder	1	pcs
1-8		Lower handle-rod pad block	1	pcs
1-9		Knob	1	pcs
1-10		POM washer	1	pcs
1-11		"Lower handle-rod	1	pcs
1-12		Insulation sleeve	2	pcs
2	RA311082385	Switch box assembly	1	set
2-1		Heat shrink tubing $\phi 6$	10	cm
2-2		Electrical lead (yellow)	5	cm
2-3		Start cable	1	pcs
2-4		Hexagonal socket screw	1	pcs
2-5		Hexagonal socket pan head self-tapping screw ST4.2*25-F	2	pcs
2-6		Hexagonal socket pan head self-tapping screw ST4.2*20-C	2	pcs
2-7		Hexagonal socket pan head self-tapping screw ST4*16-F	2	pcs
2-8		Kobalt slider (65Mn)	1	pcs
2-9		Small shaft	1	pcs
2-10		Torsion spring	1	pcs
2-11		Rigid mounting plate	1	pcs
2-12		Button return spring	1	pcs
2-13		Short cable compression spring	1	pcs
2-14		Cable spring holder	1	pcs
2-15		Internal crimping board	1	pcs
2-16		Slider	1	pcs



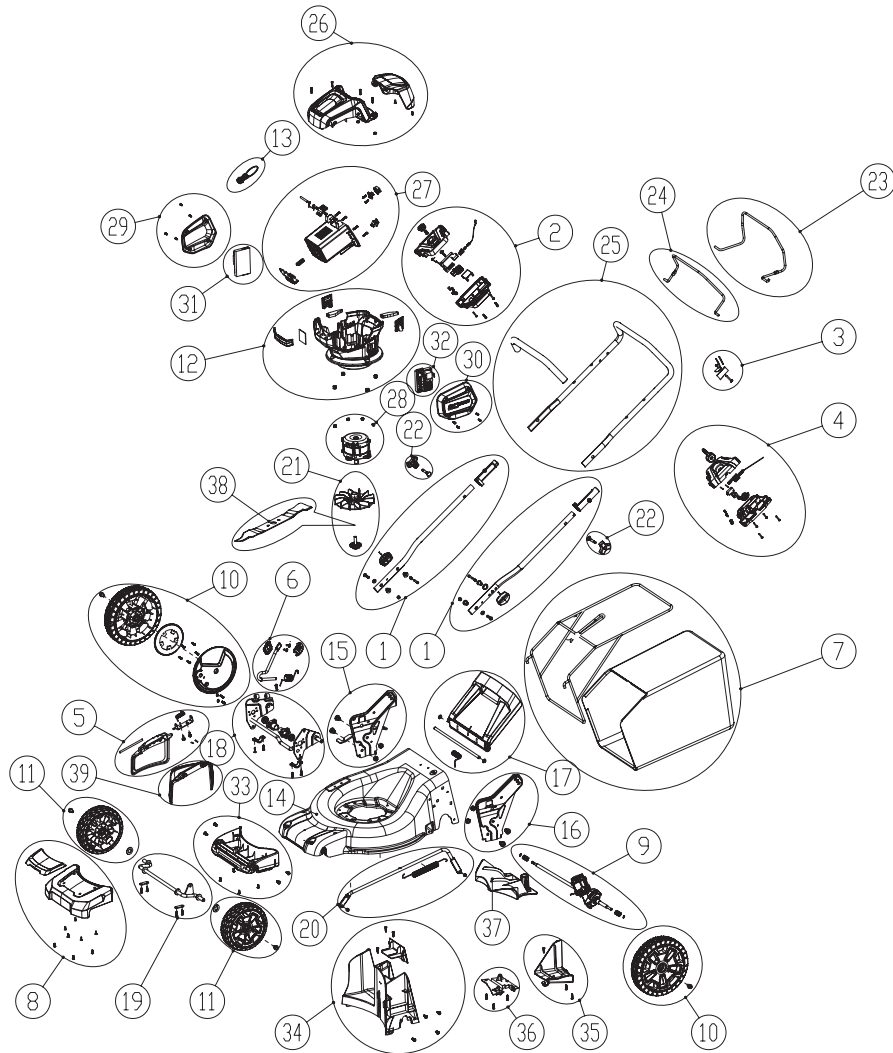
# Lawn Mower 82 LMS46S 2500586



POSITION	PNC	DESCRIPTION	QTY	UOM
2-17		Button	1	pcs
2-18		Switch box insert	1	pcs
2-19		Switch box upper cover	1	pcs
2-20		Switch box lower cover	1	pcs
2-21		Clamp head	1	pcs
2-22		Horizontal flag insertion sheath 4.8	2	pcs
2-23		Switch	1	pcs
2-24		Power cord	1	pcs
2-25		U-shaped sheet 3*4	1	cm
2-26		Horizontal flag insertion terminal 4.8X0.5	2	pcs
2-27		2PIN wiring casing	1	pcs
2-28		Wire connector male terminal	3	pcs
2-29		1PIN wiring casing	1	pcs
2-30		Bellow	500	cm
2-31		Black tie	2	pcs
2-32		Nylon tie, white	2	pcs
3	RA33323250	Limit piece assembly	1	set
3-1		Self-locking nut M5 (black)	1	pcs
3-2		Hexagonal socket pan head bolt M5*28	1	pcs
3-3		sponge pad of Limit piece	1	pcs
3-4		Limit piece	1	pcs
4	RA312022385	Speed switch box assembly	1	set
4-1		Start cable (short)	1	pcs
4-2		Cross recess pan head self-tapping screw ST4.2*25-F	4	pcs
4-3		Cross head self-tapping screw ST4*16-F	3	pcs
4-4		Positioning pin	2	pcs
4-5		Return pressure spring	1	pcs
4-6		Push button	1	pcs
4-7		Switch lower case	1	pcs
4-8		Switch upper case	1	pcs
4-9		Speed-regulation large gear	1	pcs

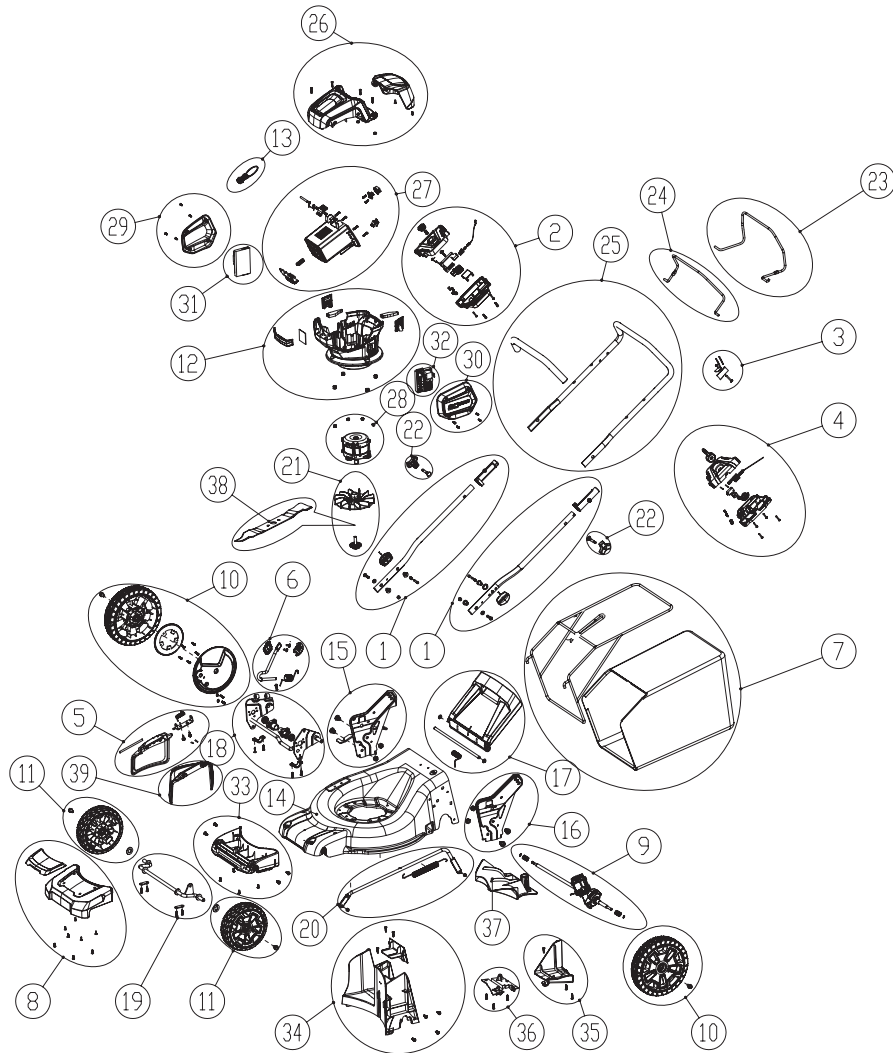


# Lawn Mower 82 LMS46S 2500586




POSITION	PNC	DESCRIPTION	QTY	UOM
4-10		Speed-regulation pinion	1	pcs
4-11		Slider	1	pcs
4-12		Potentiometer board	1	pcs
4-13		Micro switch (two pin)	1	pcs
4-14		Internal crimping board	1	pcs
4-15		Power cord	1	pcs
4-16		Heat shrink tubing	1	pcs
5	RA311041511	Side discharge cover assembly	1	set
5-1		Hexagonal flange face bolt M6X8	2	pcs
5-2		Side discharge bracket, white zinc plated	1	pcs
5-3		Side discharge hinge rod, white zinc plated	1	pcs
5-4		Side cover torsion spring	1	pcs
5-5		Side discharge cover	1	pcs
5-6		Rubber bushing	2	pcs
6	RA311052385	Height adjustment lever assembly	1	set
6-1		Cross recess pan head self-tapping screw with washer	2	pcs
6-2		Split pin	1	pcs
6-3		Height adjustment lever (curved)	1	pcs
6-4		Height adjustment torsion spring	1	pcs
6-5		Height adjustment handle left housing	1	pcs
6-6		Height adjustment handle right housing	1	pcs
7	RA311062385	Grass collecting bag assembly	1	set
7-1		Grass collecting bag bracket	1	pcs
7-2		Grass collecting bag	1	pcs
8	RA341331179AJ	Bumper assembly	1	set
8-1		Hexagonal socket self-tapping screw ST4.2*12-F	4	pcs
8-2		Bumper	1	pcs
8-3		Bumper decorative cover	1	pcs
8-4		Cross head self-tapping screw ST4.2*20-C	4	pcs
9	RA311131554	Rear axle assembly - self propelled	1	set
9-1		Rear axle assembly - self propelled	1	pcs

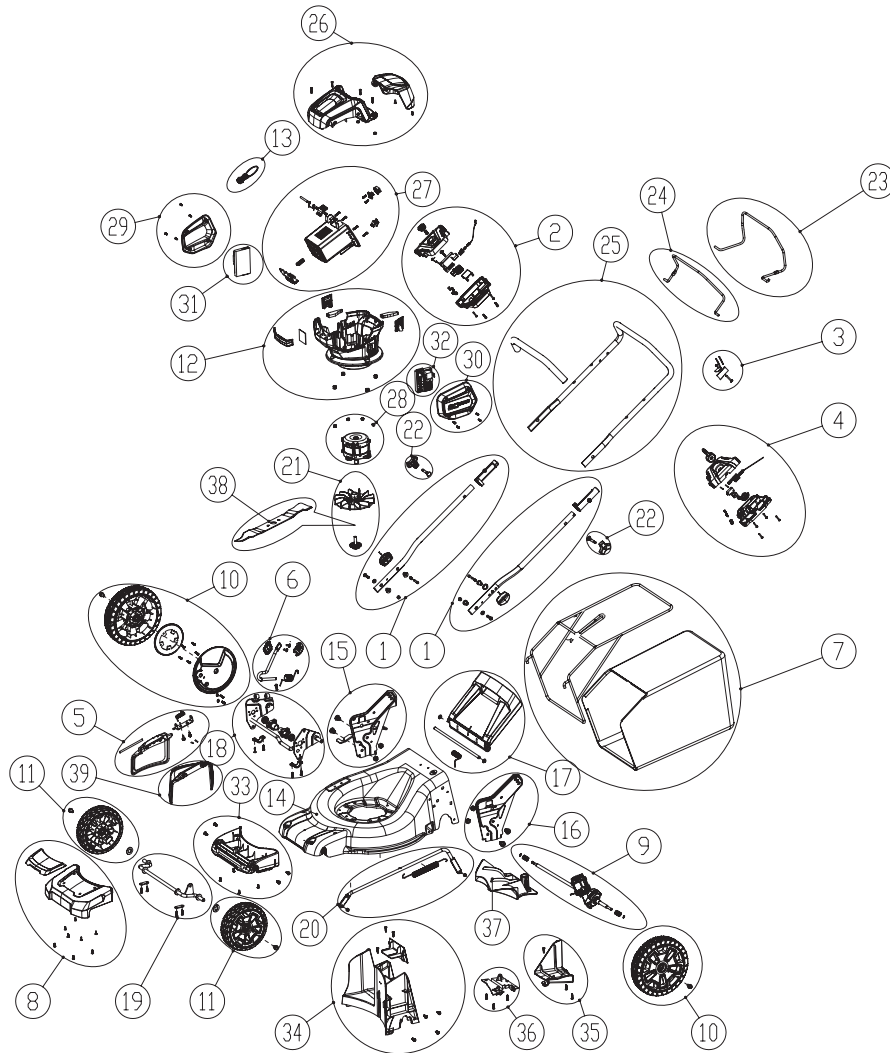
# CRAMER Lawn Mower 82 LMS46S 2500586



POSITION	PNC	DESCRIPTION	QTY	UOM
9-2		self-propelled gear	2	pcs
9-3		washer for shaftsφ6	2	pcs
10	RA341021531E	10"wheel assembly	1	set
10-1		M8*16 hexagon flange face bolt	4	pcs
10-2		Large gear for a wheel	2	pcs
10-3		Hexagonal socket pan head self-tapping screw ST4.2*20-C	8	pcs
10-4		10 inch wheel assembly	2	pcs
10-5		Dust cover	2	pcs
10-6		Cross head self-tapping screw ST4*16-F	2	pcs
10-7		Washer	2	pcs
10-8		Lubrication grease	0.025	kg
10-9		self-tapping screw	2	pcs
10-10		washer for shafts	2	pcs
10-11		Small gear	1	pcs
11	RA341281179AB	8"wheel assembly	1	set
11-1		8 inch wheel assembly	2	pcs
11-2		M8*16 hexagon flange face bolt	4	pcs
11-3		80V Washer	1	pcs
12	RA341201511AB	Motor fixed base assembly	1	set
12-1		Right dust screen	1	pcs
12-2		Left dust screen	1	pcs
12-3		Left wire cover	1	pcs
12-4		Self-locking nut with flange	4	pcs
12-5		Motor holder	1	pcs
12-6		LED light cover	1	pcs
12-7		Right wire cover	1	pcs
13	RA311092385	Key assembly	1	set
13-1		80v key male insert piece	1	pcs
13-2		Left key shell	1	pcs
13-3		Right key shell	1	pcs
14	RA333011511G	Case housing assembly	1	set

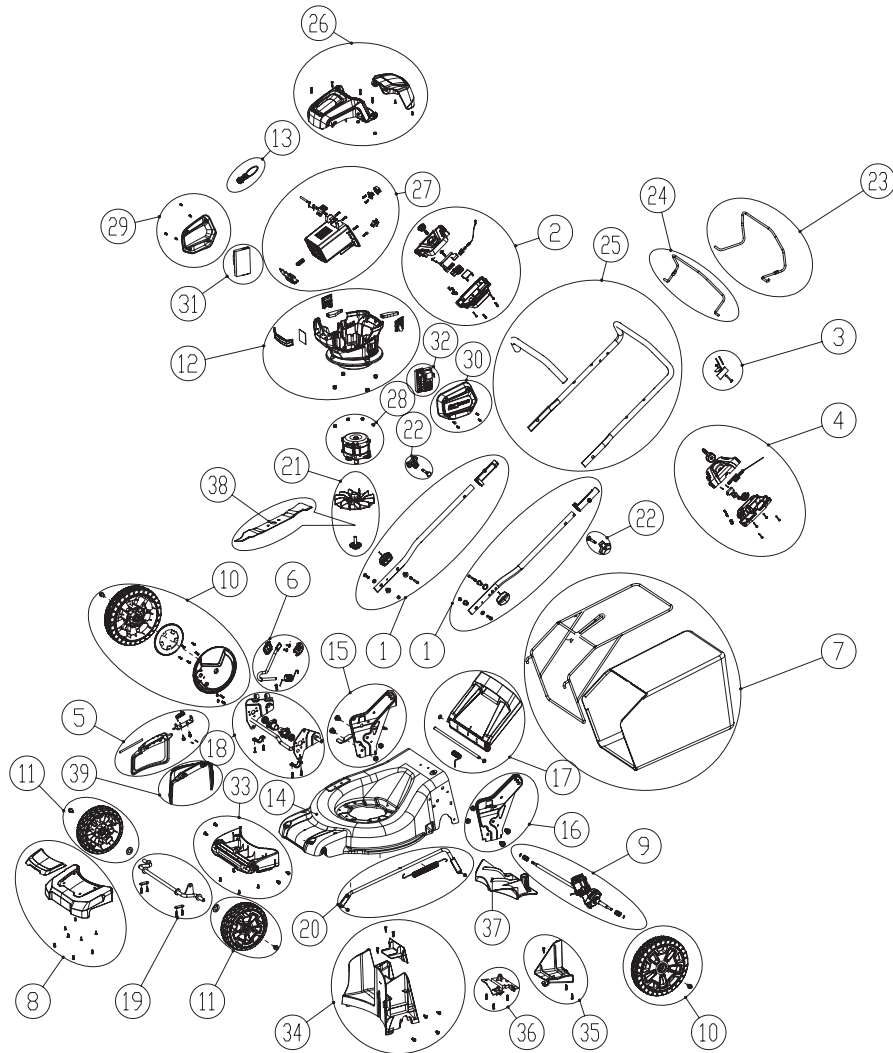


# Lawn Mower 82 LMS46S 2500586



POSITION	PNC	DESCRIPTION	QTY	UOM
14-1		Housing assembly	1	pcs
15	RA311121511E	Height adjustment bracket (right) assembly	1	set
15-1		Right height adjustment bracket	1	pcs
15-2		Hexagonal socket cup head bolt M10*20	2	pcs
15-3		Lock nut M10	2	pcs
16	RA333021505E	Height adjustment bracket (left) assembly	1	set
16-1		Left height adjustment bracket	1	pcs
16-2		Hexagonal socket cup head bolt M10*20	2	pcs
16-3		Lock nut M10	2	pcs
17	RA341021511B	Rear cover assembly	1	set
17-1		Rear cover plate	1	pcs
17-2		Split washer 8	2	pcs
17-3		Rear cover torsion spring	1	pcs
17-4		Rear cover rod	1	pcs
18	RA332031512	Back wheel axle assembly	1	set
18-1		Rear axle weld part	1	pcs
18-2		Clamp plate	2	pcs
18-3		Hexagonal socket pan head self-tapping screw ST4.2*20-C	4	pcs
18-4		Bearing seat	2	pcs
18-5		Bearing	2	pcs
18-6		self-tapping screw	2	pcs
18-7		washer	2	pcs
19	RA311021511A	Front wheel axle assembly	1	set
19-1		19 inch front wheel axle	1	pcs
19-2		Axle pressure plate	2	pcs
19-3		Hexagonal socket pan head self-tapping screw ST4.2*20-C	4	pcs
20	RA333021511B	Height adjustment link bar assembly	1	set
20-1		Height adjustment connecting rod	1	pcs
20-2		Height adjustment pull spring	1	pcs
20-3		Lock nut M6 white zinc-plated	2	pcs
21	RA341191179E	Fan assembly	1	set

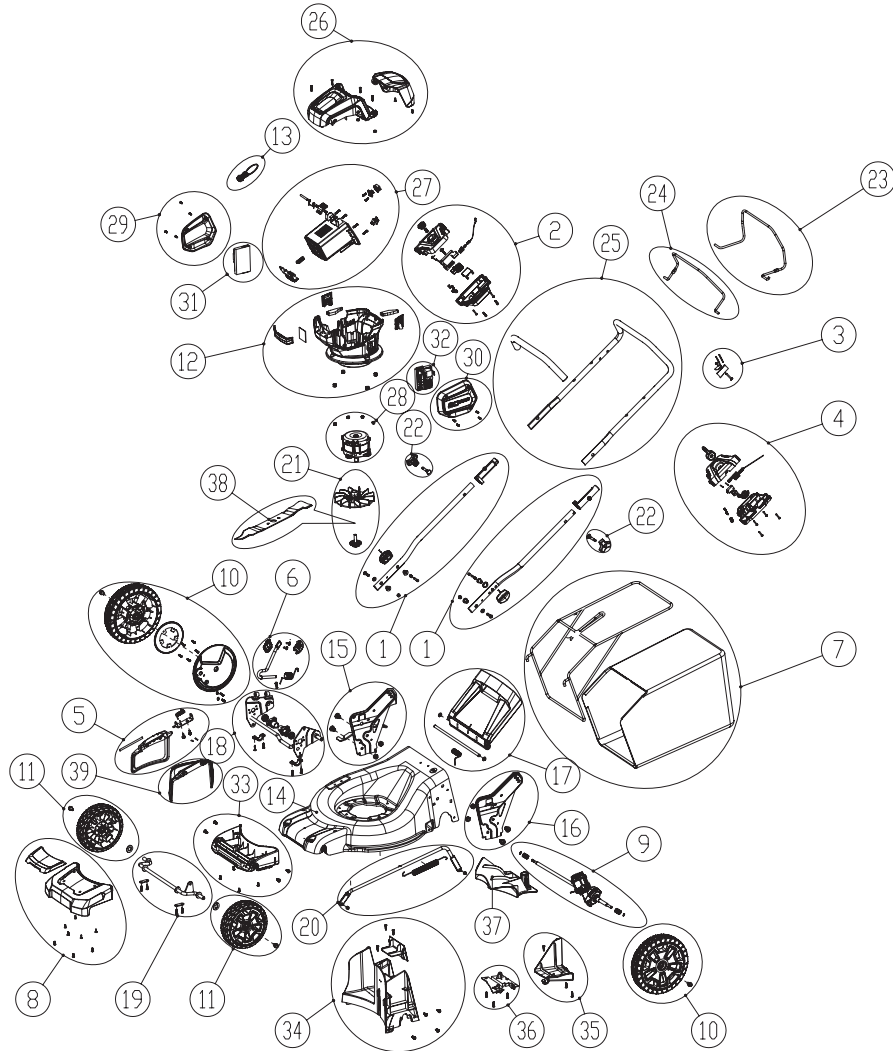
# CRAMER Lawn Mower 82 LMS46S 2500586



POSITION	PNC	DESCRIPTION	QTY	UOM
21-1		82V fan	1	pcs
21-3		Blade bolt -as seperate part	1	pcs
22	RA341291179AB	Knob assembly	2	set
22-1		M8 Handle Blot	1	pcs
22-2		M8 Handle Knob	1	pcs
23	RA332021512AB	Down link assembly	1	set
23-1		Down link	1	pcs
24	RA332011512AB	Up link assembly	1	set
24-1		Up link	1	pcs
25	RA333011512D	Up push rod assembly	1	set
25-1		Sponge	1	pcs
25-2		Up push rod	1	pcs
26	RA341161511AB	Cover assembly	1	set
26-1		Hexagonal socket pan head self-tapping screw ST4.2*20-C	4	pcs
26-2		Cover	1	pcs
26-3		Transparent chamber	1	pcs
26-4		Battery cover assembly	1	pcs
26-5		Cross head self-tapping screw	2	pcs
26-6		maganet	2	pcs
27	RA311242385	Battery assembly	1	set
27-1		Key holder	1	pcs
27-2		Battery button	1	pcs
27-3		Speed switch	1	pcs
27-4		82V battery	1	pcs
27-5		Battery socket	1	pcs
27-6		Battery ejection spring	2	pcs
27-7		shaft sleeve	2	pcs
27-8		Battery button torsion spring	1	pcs
27-9		Fixed battery button shaft	1	pcs
27-10		Hexagonal socket self-tapping screw ST4.2*12-F	2	pcs
27-11		tablet	1	pcs



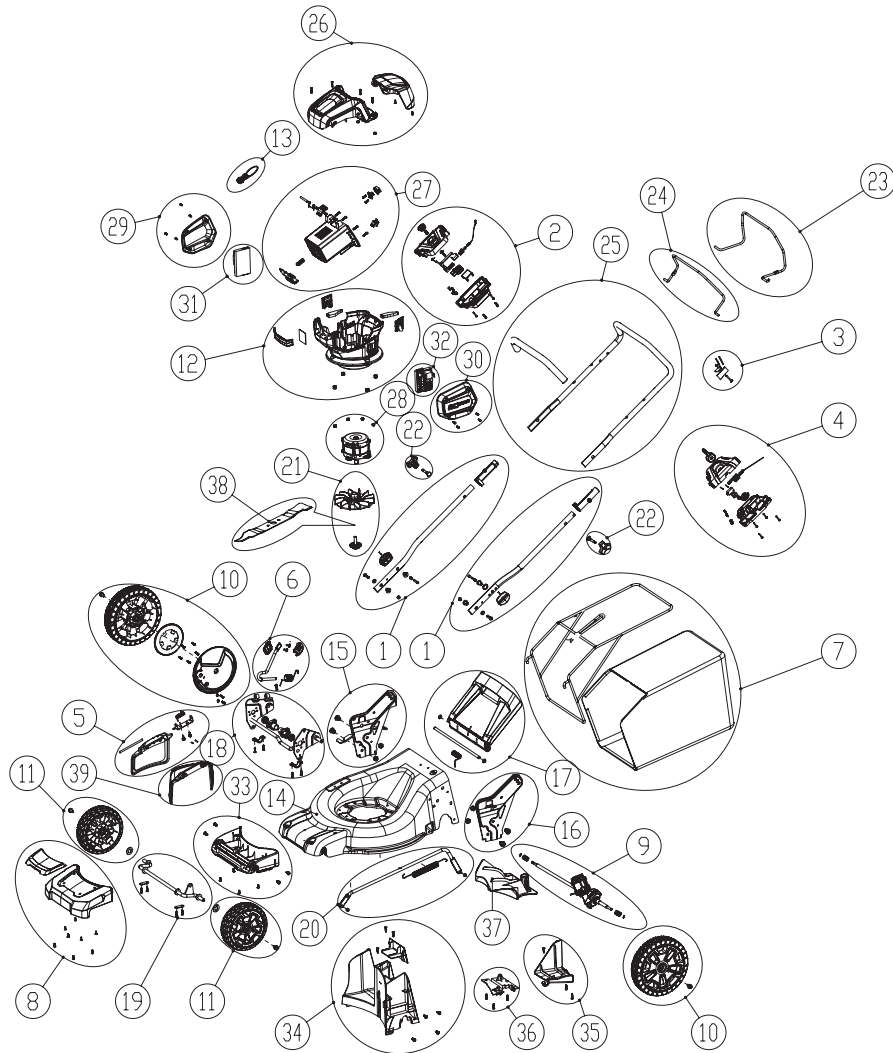
# Lawn Mower 82 LMS46S 2500586



POSITION	PNC	DESCRIPTION	QTY	UOM
27-12		Electrical lead (14AWG black)	15	cm
27-13		Electrical lead (14AWG red)	58	cm
27-14		Electrical lead (yellow)	15	cm
27-15		Hexagonal socket self-tapping screw ST4.2*12-C	4	pcs
27-16		80V female insert piece	1	pcs
27-17		Nylon tie, white	2	□
27-18		Heat shrink tubing φ8	3	cm
27-19		Magnetic ring	2	pcs
27-20		3PIN plug	1	pcs
27-21		Wire connector female terminal	3	pcs
28	RA361011567	Motor assembly	1	set
28-1		Self-locking nut M6	4	pcs
28-2		82V 19"Motor	1	pcs
29	RA341121511AB	Right side cover assembly	1	set
29-1		Hexagonal socket self-tapping screw ST4.2*12-F	4	pcs
29-2		Right side cover	1	pcs
30	RA341131511AB	Left side cover assembly	1	set
30-1		Hexagonal socket self-tapping screw ST4.2*12-F	4	pcs
30-2		Left side cover	1	pcs
31	RA362011554A	Pcb assembly(82v)	1	set
31-1		PCB	1	pcs
31-2		Wire harness	1	pcs
32-3		self-tapping screw ST3*10 with washer	2	pcs
32	RA362021554A	Pcb assembly(80v)	1	set
32-1		Pcb assembly(80v)	1	pcs
33	RA311901567	Front bulkhead assembly	1	set
33-1		Front bulkhead	1	pcs
33-2		Hexagonal socket self-tapping screw ST5*16	5	pcs
34	RA341051554	Back bulkhead assembly	1	set



# Lawn Mower 82 LMS46S 2500586



POSITION	PNC	DESCRIPTION	QTY	UOM
34-1		Hexagonal socket pan head self-tapping screw ST4.2*20-C	30	pcs
34-2		PCB cover	1	pcs
34-3		Back bulkhead	1	pcs
34-4		Hexagonal socket self-tapping screw ST5.5*16-F	9	pcs
35	RA341091511	Housing connecting board	1	set
35-1		Hexagonal socket pan head self-tapping screw ST4.2*12-F	4	pcs
35-2		Housing connecting board	1	pcs
36	RA341971554	Dust cap assembly(gear box)	1	set
36-1		Hexagonal socket pan head self-tapping screw ST4.2*20-C	3	pcs
36-2		Dust cap	1	pcs
37	RA341011511	Plug assembly	1	set
37-1		Plug	1	pcs
38	RA333022330	Blade assembly	1	set
38-1		Blade	1	pcs
39	RA341031511B	Side discharge chute assembly	1	set
39-1		Side discharge chute	1	pcs

