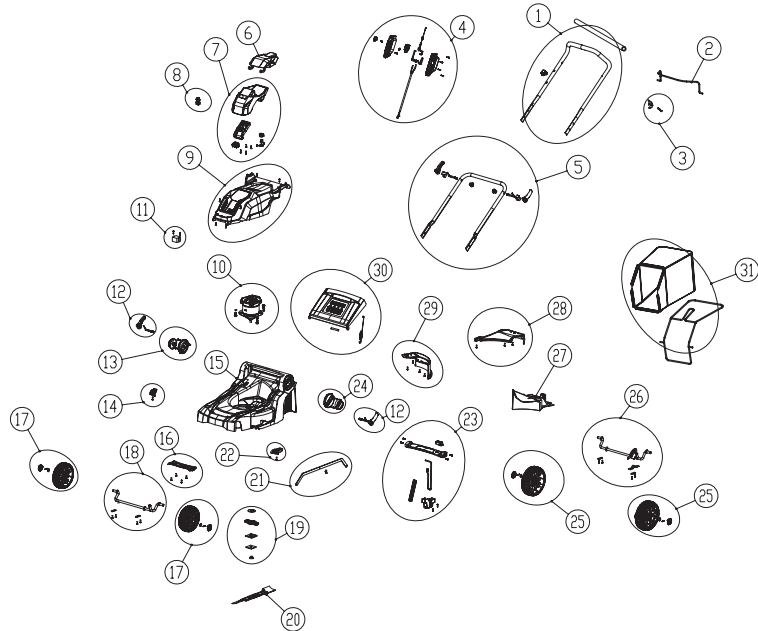




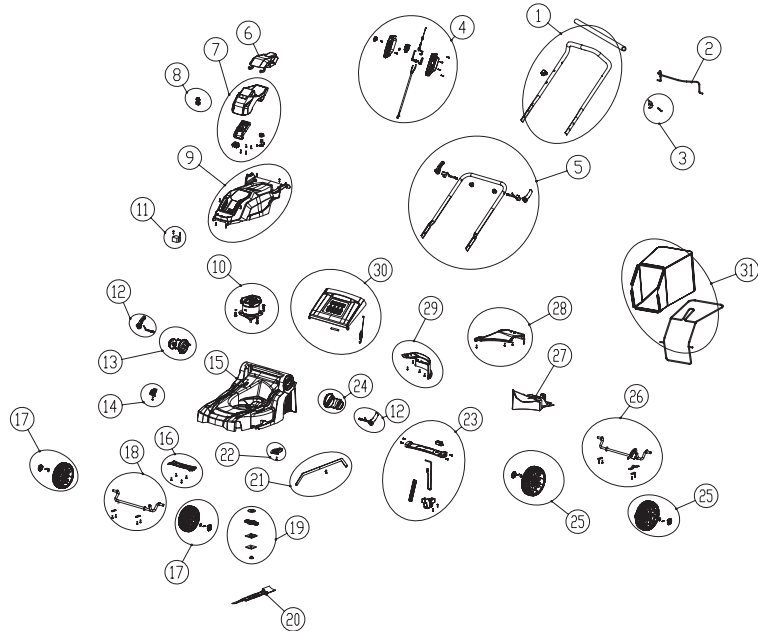
Lawn Mower 40LM41 2501286



POSITION	PNC	DESCRIPTION	QTY	UOM
1	RA333111559C	Upper handle-rod assembly	1	set
1-1		Hand-rest sponge	1	pcs
1-2		Upper handle-rod	1	pcs
1-3		Cord hook	1	pcs
2	RA333031171C	Switch link assembly	1	set
2-1		Switch link	1	pcs
3	RA33323250V1	Limit piece assembly	1	set
3-1		Limit piece	1	pcs
3-2		Self-locking nut M5 (black)	1	pcs
3-3		Hexagonal socket cheese head machine screw M5*30, half thread, class 8.8 (without point)	1	pcs
4	RA311032396	Switch box assembly	1	set
4-1		Button	1	pcs
4-2		Button return spring	1	pcs
4-3		Switch box upper cover	1	pcs
4-4		Clamp head	1	pcs
4-5		Cable spring holder	1	pcs
4-6		Start cable	1	pcs
4-7		Short cable compression spring	1	pcs
4-8		Kobalt slider (65Mn)	1	pcs
4-9		Switch box lower cover	1	pcs
4-10		Hexagonal socket pan head self-tapping screw ST4.2*25-F	4	pcs
4-11		Switch slider	1	pcs
4-12		Small shaft	1	pcs
4-13		Power cord	1	piece
4-14		Torsion spring	1	pcs
4-15		Rigid mounting plate	1	pcs
4-16		Cut-off switch	1	pcs
4-17		ST3*12-C self-tapping screw	1	pcs
4-18		Heat shrink tubing	20	cm
4-19		Hexagonal socket pan head self-tapping screw ST4*16-F	2	pcs
4-20		Internal crimping board	1	pcs
4-21		Heat shrink tubing φ8	20	cm
4-22		Magnetic ring	1	pcs



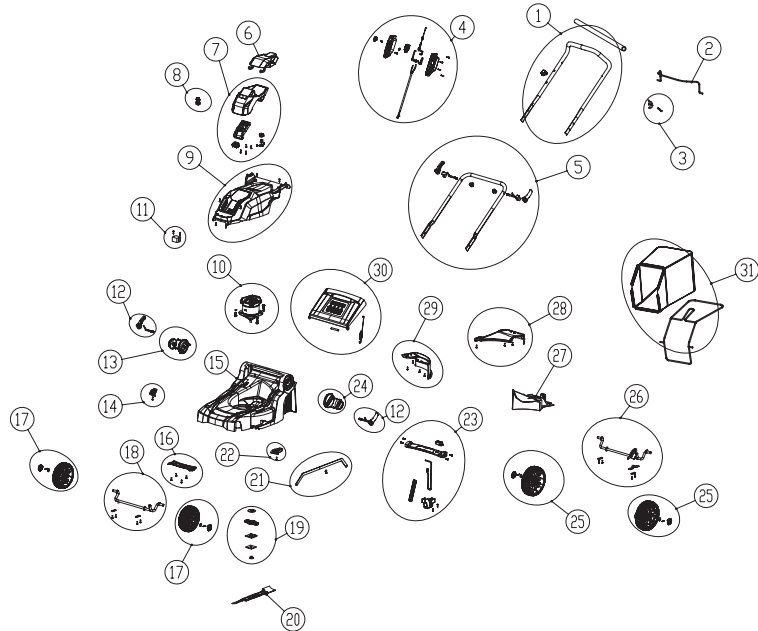
Lawn Mower 40LM41 2501286



POSITION	PNC	DESCRIPTION	QTY	UOM
4-23		Inductor	2	pcs
4-24		Electrical lead (14AWG black)	100	cm
4-25		Electrical lead (14AWG red)	10	cm
4-26		Electrical lead (white)	20	cm
4-27		Yellow UL1015AWG14	0.4	M
4-28		Horizontal flag insertion terminal 6.3X0.8	6	pcs
4-29		2PIN plug	1	pcs
4-30		Wire connector female terminal	2	pcs
4-31		Wire connector male terminal	1	pcs
4-32		Horizontal insertion terminal sheath	6	pcs
5	RA33315486CA	Lower handle-rod clamp assembly	1	set
5-1		Clamp handle, black	2	pcs
5-2		Black clamp pad piece	2	pcs
5-3		Elastic cylindrical pin 5*26	2	pcs
5-4		Stud	2	pcs
5-5		M8 small rotary cap	2	pcs
5-6		Lower handle-rod	1	pcs
6	RA341041558D	Battery pack transparent cover assembly	1	set
7	RA341031558E	Battery pack housing assembly	1	set
7-1		Battery pack housing	1	pcs
7-2		Battery pack base	1	pcs
7-3		Screw ST4*16-F	8	pcs
7-4		Key holder	1	pcs
7-5		Key holder pressure sheet	1	pcs
7-6		Screw ST3.5*13-F	2	pcs
7-7		80V female insert piece	2	pcs
7-8		Housing insert holder	1	pcs
7-9		Electrical lead (14AWG red)	600	mm
7-10		Electrical lead (14AWG yellow)	400	mm
7-11		Electrical lead (14AWG black)	400	mm
7-12		Wire connector female terminal	3	pcs
7-13		Shrink $\phi 8$	10	cm
7-14		Shrink $\phi 6$	10	cm
7-15		3PIN Plug	1	pcs
8	RA311051479AB	Key assembly	1	set



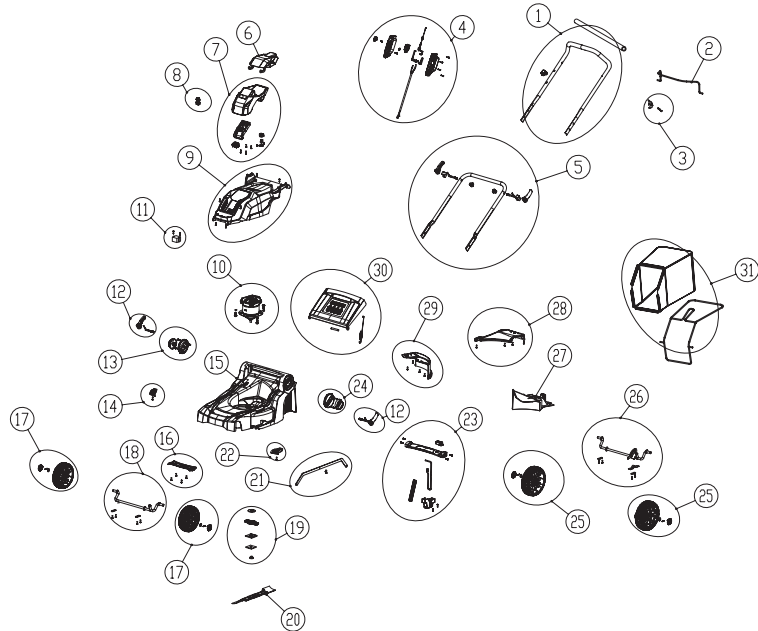
Lawn Mower 40LM41 2501286



POSITION	PNC	DESCRIPTION	QTY	UOM
8-1		Key male insert piece	1	pcs
8-2		Left key shell	1	pcs
8-3		Right key shell	1	pcs
9	RA341121559F	Upper housing assembly	1	set
9-1		Upper housing	1	pcs
9-2		Hexagonal socket pan head self-tapping screw ST4*16-F	4	pcs
9-3		Hexagonal socket self-tapping screw ST4.2*20-C [blackened]	6	pcs
10	RA36101470A	Motor assembly	1	set
10-1		Self-locking nut M6 (black)	3	pcs
10-2		Bolt and flat washer combination M6*30	3	pcs
10-3		40V push mower motor	1	pcs
11	RA36202487T1	PCB assembly	1	set
11-1		40V single blade control panel, without energy saving protection (TE terminal)	1	pcs
11-2		Hexagonal socket self-tapping screw ST3.5*40-F [blackened]	2	pcs
12	RA34102466C	Casing quick clamp connection assembly	1	set
12-1		Clamp handle	2	pcs
12-2		Elastic cylindrical pin 5*26	2	pcs
12-3		Stud	2	pcs
13	RA341151559AA	Right fixed block assembly	1	set
13-1		Lower handle-rod clamp pad block	1	pcs
13-2		Hexagonal socket pan head self-tapping screw ST4*16-F	2	pcs
13-3		Right fixed block	1	pcs
14	RA341161559B	Right decorative cover assembly	1	set
14-1		Grass comb right decorative cover	1	pcs
14-2		Hexagonal socket pan head self-tapping screw ST4*16-F	1	pcs
15	RA341011559A	House casing assembly	1	set
15-1		Bottom casing	1	pcs
15-2		Crimping board	1	pcs
15-3		Hexagonal socket pan head self-tapping screw ST4*16-F	2	pcs
16	RA341131559AA	Front handle assembly	1	set
16-1		Front handle	1	pcs



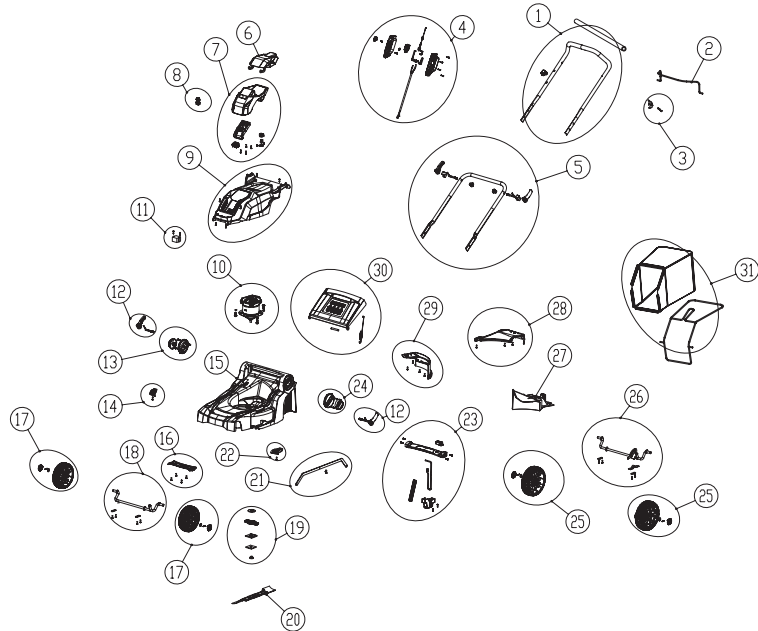
Lawn Mower 40LM41 2501286



POSITION	PNC	DESCRIPTION	QTY	UOM
16-2		Hexagonal socket cheese head self-tapping screw ST4.2*20-C (without needle)	4	pcs
17	RA341171559	7"wheel assembly	1	set
17-1		Wheel cover	1	pcs
17-2		Split pin	1	pcs
17-3		Flat washer	1	pcs
17-4		Seven inch wheel	1	pcs
18	RA333011559	Front wheel axle assembly	1	set
18-1		Front axle weld component	1	pcs
18-2		Axle pressure plate	2	pcs
18-3		Hexagonal socket cheese head self-tapping screw ST4.2*20-C (without needle)	4	pcs
19	RA34117470	Blade mounting assembly	1	set
19-1		Motor bushing	1	pcs
19-2		Blade mounting holder	1	pcs
19-3		Blade baffle	1	pcs
19-4		Square baffle	1	pcs
19-5		Shaft lock nut M10X1.25 - as seperate part	1	pcs
20	RA333161559	Blade assembly	1	set
20-1		Blade assembly	1	pcs
21	RA333031559A	Link bar assembly	1	set
21-1		Link bar	1	pcs
21-2		Indicator needle	1	pcs
22	RA341101559B	Left decorative cover assembly	1	set
22-1		Grass comb left decorative cover	1	pcs
22-2		Hexagonal socket pan head self-tapping screw ST4*16-F	1	pcs
23	RA333041559A	Height adjustment bar assembly	1	set
23-1		Handle	1	pcs
23-2		Raise the button	1	pcs
23-3		Hexagon Hex Screws ST4.2 * 12-F	4	pcs
23-4		Adjust the plastic support	1	pcs
23-5		Cut-in hexagon pan head tapping screws ST4 * 16-F	2	pcs
23-6		Adjust the tension spring	1	pcs
23-7		Adjust the lever	1	pcs
23-8		Raise the compression spring	1	pcs
24	RA341071559AA	Left fixed block assembly	1	set
24-1		Lower handle-rod clamp pad block	1	pcs



Lawn Mower 40LM41 2501286



POSITION	PNC	DESCRIPTION	QTY	UOM
24-2		Hexagonal socket pan head self-tapping screw ST4*16-F	2	pcs
24-3		Left fixed block	1	pcs
25	RA341181559	8"wheel assembly	1	set
25-1		Wheel cover	1	pcs
25-2		Split pin	1	pcs
25-3		Flat washer	1	pcs
25-4		8"wheel	1	pcs
26	RA333021559A	Rear axle height adjustment	1	set
26-1		Rear axle weld component	1	pcs
26-2		Rear axle pressure plate	1	pcs
26-3		Axle pressure plate	2	pcs
26-4		Hexagonal socket pan head self-tapping screw ST4.2*25-F	4	pcs
27	RA341041559	Plug assembly	1	pcs
27-1		Plug	1	pcs
28	RA341061559A	Grass discharge plate assembly	1	set
28-1		Grass discharge plate	1	pcs
28-2		Hexagonal socket pan head self-tapping screw ST4*16-F	4	pcs
29	RA341051559AA	Back bulkhead assembly	1	set
29-1		Back bulkhead	1	pcs
29-2		Hexagonal socket pan head self-tapping screw ST4*16-F	4	pcs
30	RA341111559E	Rear cover assembly	1	set
30-1		Rear cover	1	pcs
30-2		Rear cover rod	1	pcs
30-3		Rear cover pull spring	1	pcs
31	RA349011559D	set of grass bag assembly	1	set
31-1		set grass bags	1	pcs
31-2		set grass bag stent	1	pcs