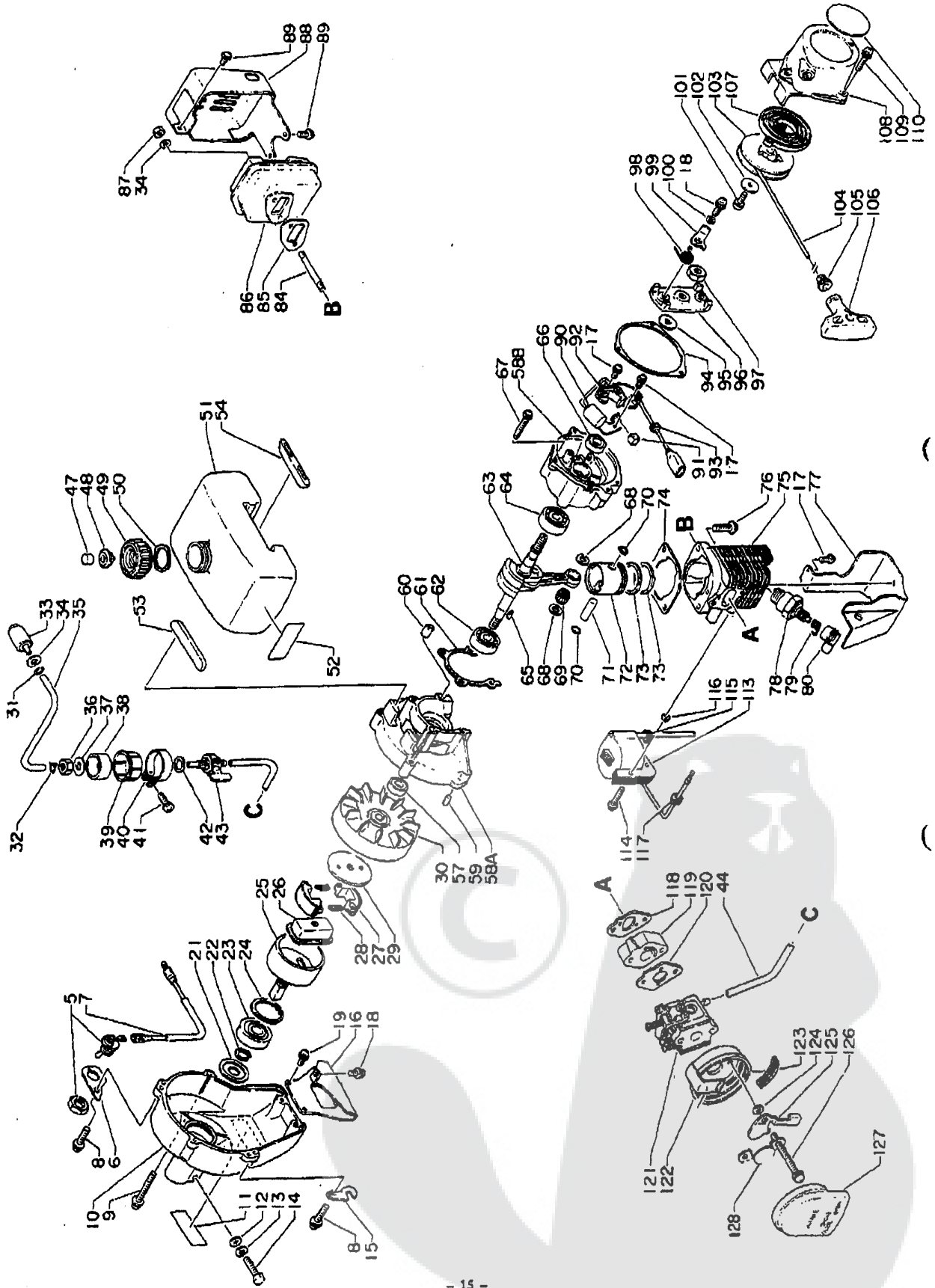


JRM 190

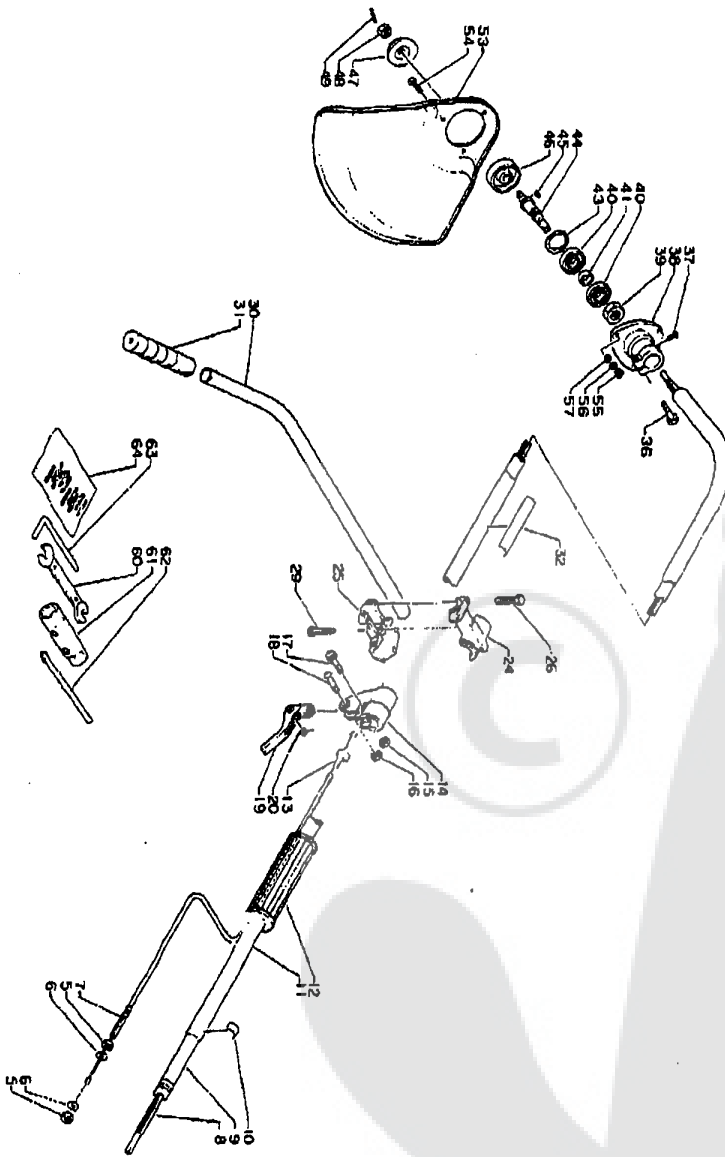
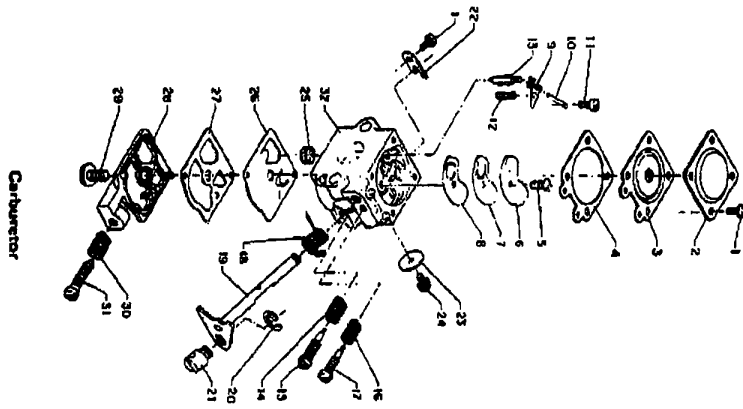


Key No.	Part Number	Q'ty	Description	Key No.	Part Number	Q'ty	Description
1- 5	163 400-0652 0	1	Switch, ignition	1- 69	100 113-0593 0	1	Bearing, needle
6	163 810-2323 0	1	Bracket	70	100 015-0463 0	2	Circlip, piston pin
7	162 010-2323 0	1	Lead	71	100 013-1021 0	1	Pin, piston
8	900 242-0502 0	3	Screw 5x20 w/W,SW	72	100 010-0903 0	1	Piston
9	900 242-0504 0	1	Screw 5x40 w/W,SW	73	100 011-0533 0	2	Ring, piston
10	101 511-2323 0	1	Cover, fan	74	101 010-0492 0	1	Gasket, cylinder base
11	890 112-2323 0	1	Label	75	101 011-2323 0	1	Cylinder
12	900 600-0000 5	1	Washer 5	76	900 242-0602 0	2	Screw 6x20 w/W,SW
13	900 605-0000 5	1	Washer, spring 5	77	101 514-0903 0	1	Cover, cylinder
14	900 151-0502 0	1	Bolt 5x20	78	159 010-0033 0	1	Plug, spark (NGK 8M-6A)
15	178 111-2323 0	1	Bracket	79	159 011-0343 2	1	Coil, spark plug cap
16	305 110-0903 0	1	Stand	80	159 012-0343 3	1	Cap, spark plug
17	900 242-0401 0	3	Screw 4x10 w/W,SW	84	101 014-2323 0	2	Stud
18	900 242-0501 0	2	Screw 5x10 w/W,SW	85	145 510-0903 0	1	Gasket, muffler
19	900 220-0400 8	2	Screw 4x8	86	145 610-2323 0	1	Muffler
21	175 053-0492 0	1	Stopper	87	433 020-0083 0	2	Locknut
22	900 701-0001 2	1	Circlip 12	88	145 621-2323 0	1	Cover, muffler
23	900 819-3620 1	1	Bearing, ball	89	900 242-0501 2	3	Screw w/W,SW
24	900 702-0003 2	1	Circlip 32	90	152 127-0553 0	1	Condenser
25	175 010-0492 0	1	Drum, clutch	91	156 134-0463 0	1	Felt
26	175 016-0733 0	1	Hub, clutch	92	152 101-0593 0	1	Points, breaker
27	175 009-0513 0	2	Shoe, clutch	93	152 114-0553 0	1	Grommet
28	175 018-0513 0	2	Spring, clutch	94	100 615-0653 0	1	Gasket
29	175 019-0492 0	1	Plate	95	100 146-0593 0	1	Washer
30	156 200-0903 0	1	Flywheel	96	177 210-0653 0	1	Catcher, pawl
31	132 013-2143 0	1	Clip	97	900 512-0000 8	1	Nut 8(L-H)
32	132 013-0236 1	1	Clip	98	177 234-0653 0	2	Spring, pawl
33	131 200-2133 0	1	Strainer, fuel	99	177 218-0653 0	2	Pawl, starter
34	900 603-0000 5	3	Washer 5	100	177 247-0463 0	2	Spacer
35	132 012-2323 0	1	Pipe	**	177 200-0603 0	1	Starter ass'y
36	900 502-0000 8	1	Nut 8	101	-900 241-0401 0	1	Screw w/W,SW
37	132 217-0653 0	1	Washer	102	-177 214-0463 0	1	Washer
38	132 220-0502 0	1	Seal	103	-177 215-0653 0	1	Reel, starter
39	132 219-0733 0	1	Collar	104	-177 226-0653 0	1	Rope, starter
40	132 505-0653 0	1	Clamp	105	-177 227-0533 0	1	Guide, rope
41	900 220-0401 4	1	Screw 4x14	106	-177 228-0653 0	1	Grip, starter
42	132 218-0653 0	1	Seal	107	-177 220-0653 0	1	Spring, rewind
43	132 200-0653 0	1	Valve ass'y, fuel	108	-177 209-0603 0	1	Case, starter
44	132 010-0653 0	1	Pipe	109	900 242-0402 0	3	Screw 4x20 w/W,SW
*	131 004-0632 0	1	Cap ass'y, fuel	110	890 112-0603 1	1	Label
47	-131 315-0502 0	1	Filter, check valve	113	156 126-0903 0	1	Coil, ignition
48	-131 314-0632 0	1	Valve, check	114	900 162-0402 2	2	H.S.H. bolt 4x22 w/W,SW
49	-131 017-0743 0	1	Cap, fuel	115	156 110-0492 0	1	Grommet
50	-131 016-0492 0	1	Gasket	116	152 117-0593 0	2	Spacer
51	131 010-2323 0	1	Tank, fuel	117	152 115-0593 0	1	Grommet
52	890 159-0653 0	1	Label	118	130 010-0652 0	1	Gasket
53	131 920-0733 0	1	Cushion	119	130 017-0126 0	1	Insulator
54	131 924-0733 0	1	Cushion	120	130 016-0492 1	1	Gasket
57	100 213-0553 0	1	Oilseal	121	123 000-2323 0	1	Carburetor
*58	100 200-2323 0	1	Crankcase set	*122	130 301-0126 0	1	Case, air cleaner
59	-100 215-0283 0	2	Pin, dowel	123	-178 810-0492 0	1	Grommet
60	-100 215-0573 0	2	Pin, dowel	124	178 516-0083 0	1	Spacer
61	100 242-2323 0	1	Gasket, crankcase	125	178 515-0492 0	1	Shutter, choke
62	900 810-3620 1	1	Bearing, ball	126	900 242-0505 7	2	Screw 5x57 w/W,SW
63	100 100-2323 0	1	Crankshaft ass'y	127	130 310-0492 2	1	Filter, air
64	900 810-3620 0	1	Bearing, ball	128	129 011-2163 0	1	Plate
65	100 131-0652 0	1	Key, Woodruff				
66	100 213-0593 0	1	Oilseal				
67	900 242-0503 0	4	Screw 5x30 w/W,SW				
68	100 014-0652 0	2	Spacer				

\* consists of 47 thru 50.  
\*58 consists of 58A, 58B, 59 and 60.

\*\* consists of 101 thru 108.  
\*122 includes 123.

- 17 -



Key No.	Part Number	Q'ty	Description	Key No.	Part Number	Q'ty	Description
2-5	900 502-0000 6	2	Nut 6	2-36	-900 152-0502 5	1	Bolt 5x25
6	900 600-0000 6	2	Washer 6	37	-900 242-0401 0	1	Screw 4x10 w/W,SW
7	178 001-2323 1	1	Wire, throttle	38	-610 410-0593 0	1	Housing, bearing
8	610 013-2323 0	1	Shaft, flexible	39	-900 503-0001 2	1	Nut 12
9	610 217-0653 1	1	Bushing	40	-900 802-0600 1	2	Bearing, ball
10	890 152-0493 0	1	Label	41	-610 315-0653 0	1	Spacer
11	610 206-2323 0	1	Housing, drive shaft	43	-900 702-0002 8	1	Circclip 28
12	351 012-0653 0	1	Grip	44	-610 310-2323 0	1	Shaft, cutter
13	178 048-0563 0	1	Spacer	45	-610 325-0273 0	1	Key, woodruff
14	178 024-0603 0	1	Bracket	46	-610 313-0853 0	1	Plats, fixing
15	900 500-0000 5	1	Nut 5	47	-610 314-0603 0	1	Plate, fixing
16	433 020-0083 0	1	Locknut	48	-900 511-0001 0	1	Nut 10(L-H)
17	900 240-0502 8	1	Screw 5x28 w/W	49	-900 300-2002 2	1	Pin, split
18	178 110-0533 0	1	Screw	*53	699 000-0733 0	1	Shield ass'y
19	178 010-0563 0	1	Trigger, throttle	54	-900 220-0401 8	3	Screw 4x18
20	178 043-0693 0	1	Spring	55	-900 500-0000 4	3	Nut 4
*	361 202-0733 0	1	Bracket ass'y	56	-900 606-0000 4	3	Washer, spring 4
24	-351 225-0733 0	1	Bracket	57	-900 600-0000 4	3	Washer 4
25	-351 232-0733 0	1	Bracket	60	895 112-0033 0	1	Spanner 8x10
26	-900 142-0502 5	2	Bolt 5x25 w/W,SW	61	895 419-0533 0	1	Wrench, box 17x19
29	-900 142-0502 8	2	Bolt 5x28 w/W,SW	62	895 412-0023 0	1	Rod, handle
30	351 210-0733 0	1	Handle	63	897 518-0113 0	1	Rod, locking
31	351 213-0593 0	1	Grip	64	898 502-0113 0	1	Pin, split 2x22(10 pcs)
32	890 160-0963 1	1	Label				
**	810 400-2323 0	1	Housing ass'y, bearing				

\* consists of 24, 25, 26 and 29.  
 \*\* consists of 38 thru 49.

53 includes 54 thru 57.

Key No.	Part Number	Q'ty	Description	Key No.	Part Number	Q'ty	Description
3-*	123 000-2323 0	1	Carburetor (WA-132)	3-20	-123 127-1063 0	1	Clip
1	-123 130-0296 0	5	Screw	21	-123 172-0432 0	1	Swivel
2	-123 142-0393 0	1	Cover, metering diaph.	22	-123 127-0393 0	1	Clip, throttle shaft
3	-123 141-0393 0	1	Diaphragm, metering	23	-123 116-2323 0	1	Valve, throttle
4	-123 140-0393 0	1	Gasket, metering diaph.	24	-123 114-0393 0	1	Screw
5	-123 167-0523 0	1	Screw	25	-123 126-1063 1	1	Screen, inlet
6	-123 166-0393 0	1	Plate, circuit	26	-123 112-0393 0	1	Diaphragm, pump
7	-123 165-0393 0	1	Diaphragm, circuit	27	-123 125-0393 0	1	Gasket, pump
8	-123 164-0393 0	1	Gasket, circuit plate	28	-123 124-2163 0	1	Cover, pump
9	-123 123-0393 0	1	Lever, metering	29	-123 110-0393 0	1	Screw
10	-123 138-0393 0	1	Pin, metering lever	30	-123 133-0632 0	1	Spring, idle screw
11	-123 139-0393 0	1	Screw	31	-123 134-0632 0	1	Screw, idle speed
12	-123 122-0393 0	1	Spring, metering lever	32		1	Body, carburetor (order 123000-23230)
13	-123 137-0393 0	1	Valve, inlet needle				
14	-123 119-2213 0	1	Spring, H.S. needle				
15	-123 120-0653 0	1	Needle, high-speed				
16	-123 121-2213 0	1	Spring, idle needle				
17	-123 118-2323 0	1	Needle, idle mixture				
18	-123 113-0393 0	1	Spring, throttle ret.				
19	-123 117-0602 0	1	Shaft, throttle				

Part Number	Description	Key Number
123 103-0393 0	Kit,gasket/diaphragm	3, 4, 7, 8, 26, 27
123 102-2213 0	Kit,Kwik repair	3, 4, 5, 7, 8, 9, 10, 12, 13, 24, 25, 26, 27

\* consists of 1 thru 32.