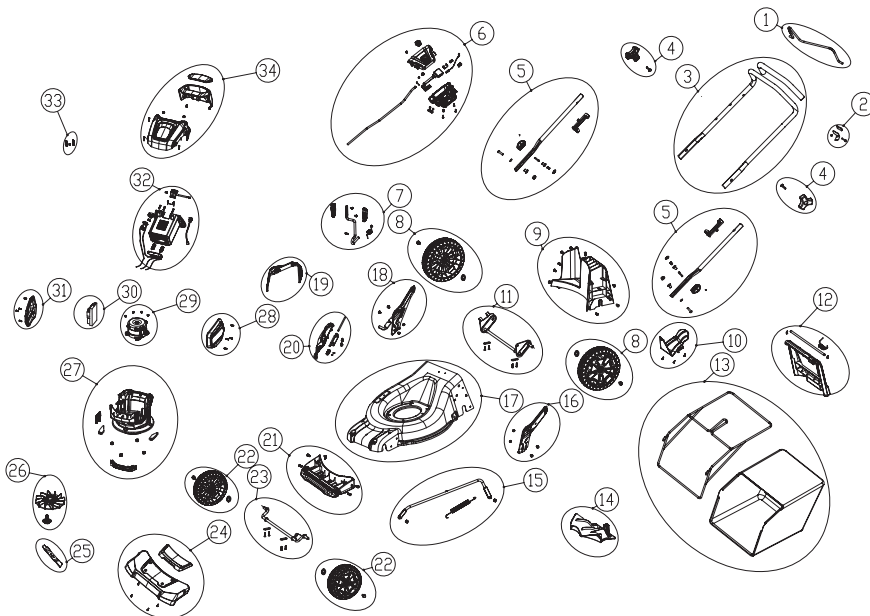



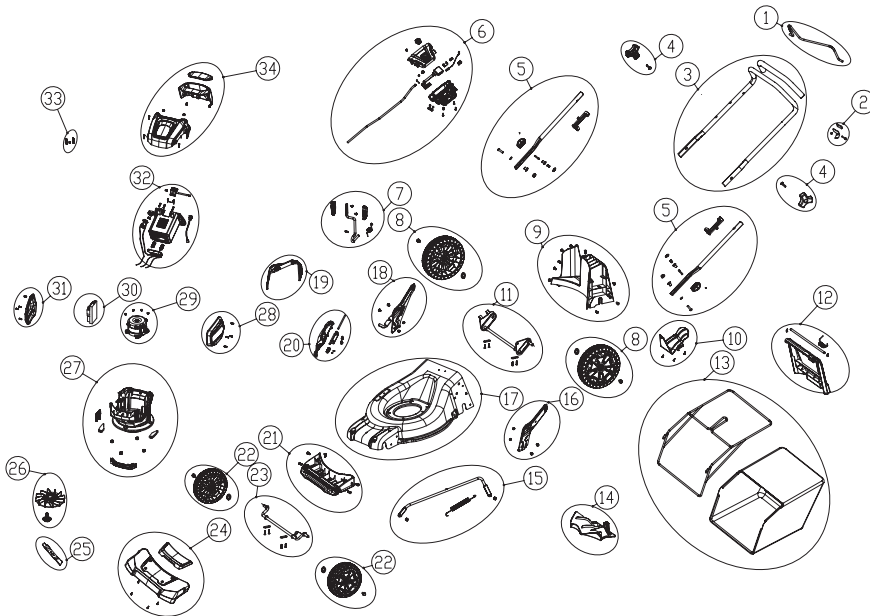
Lawn Mower 82 LMS46 2500486



POSITION	PNC	DESCRIPTION	QTY	UOM
1	RA332011512AB	Upper pull rod	1	set
1-1		Upper pull rod	1	pcs
2	RA33323250	Stop sheet assembly	1	set
2-1		Stop sheet sponge pad	1	pcs
2-2		Hexagonal socket pan head bolt M5*28	1	pcs
2-3		Stop sheet	1	pcs
2-4		Self-locking nut M5 (black)	1	pcs
3	RA333011512E	Upper handle-rod assembly	1	set
3-1		Upper handle-rod	1	pcs
3-2		Hand-rest sponge	1	pcs
4	RA341291179AB	Handle-rod knob assembly	2	set
4-1		Knob	1	pcs
4-2		M8 Handle-rod bolt	1	pcs
5	RA333101511B	Lower handle-rod assembly	2	set
5-1		Lower handle-rod	1	pcs
5-2		Spring pin	1	pcs
5-3		Knob (φ25)	1	pcs
5-4		Hexagonal socket cup head bolt M8X35	1	pcs
5-5		Flat washer M8 (8.4-16-1.6)	1	pcs
5-6		Lower handle-rod pad block	1	pcs
5-7		Lock nut M8	1	pcs
5-8		POM washer	1	pcs
5-9		Knob compression spring	1	pcs
5-10		Handle-rod stop post holder	1	pcs
5-11		Handle-rod stop post	1	pcs
5-12		Insulation sleeve	1	pcs
6	RA311112386	Switch box assembly	1	set
6-1		Start cable	1	pcs
6-2		Short cable compression spring	1	pcs
6-3		Cable spring holder	1	pcs
6-4		Button	1	pcs
6-5		Switch box upper cover	1	pcs



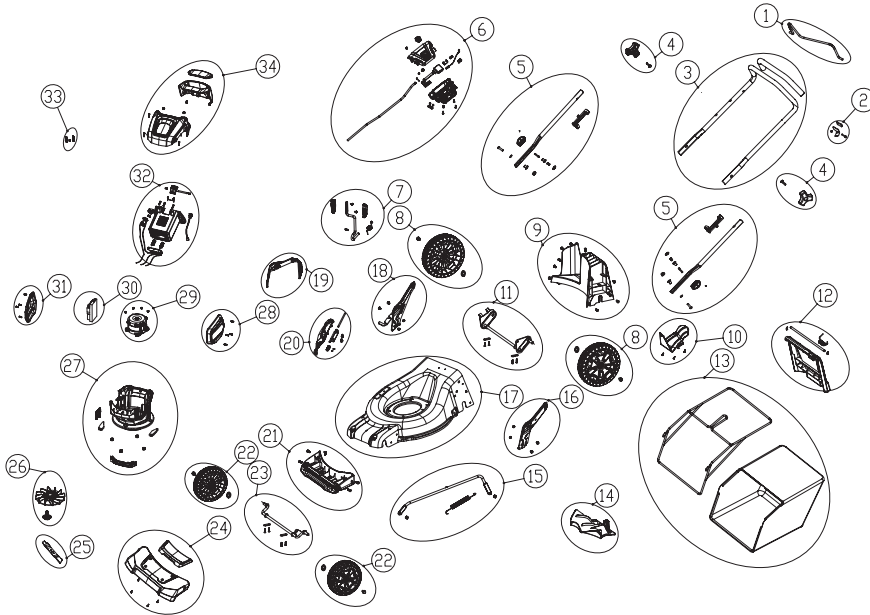
Lawn Mower 82 LMS46 2500486




POSITION	PNC	DESCRIPTION	QTY	UOM
6-6		Button return spring	1	pcs
6-7		Clamp head	1	pcs
6-8		Hexagonal socket screw	1	pcs
6-9		Small shaft	1	pcs
6-10		Power cord	1	pcs
6-11		Torsion spring	1	pcs
6-12		Kobalt slider (65Mn)	1	pcs
6-13		Internal crimping board	1	pcs
6-14		Hexagonal socket pan head self-tapping screw ST4*16-F	2	pcs
6-15		Hexagonal socket pan head self-tapping screw ST4.2*20-C	2	pcs
6-16		Hexagonal socket pan head self-tapping screw ST4.2*25-F	2	pcs
6-17		Switch box lower cover	1	pcs
6-18		Rigid mounting plate	1	pcs
6-19		Switch	1	pcs
6-20		Switch box insert	1	pcs
6-21		Slider	1	pcs
6-22		Heat shrink tubing $\phi 6$	10	cm
6-23		Electrical lead (yellow)	5	cm
6-24		Horizontal flag insertion sheath 4.8	2	pcs
6-25		2PIN wiring casing	1	pcs
6-26		1PIN wiring casing	1	pcs
6-27		U-shaped sheet 3*4	1	cm
6-28		Horizontal flag insertion terminal 4.8X0.5	2	pcs
6-29		Wire connector male terminal	3	pcs
6-30		Bellow	250	MM
6-31		Black tie	2	pcs
6-32		Nylon tie, white	2	pcs
7	RA311052385	Height adjustment handle assembly	1	set
7-1		Height adjustment handle right housing	1	pcs



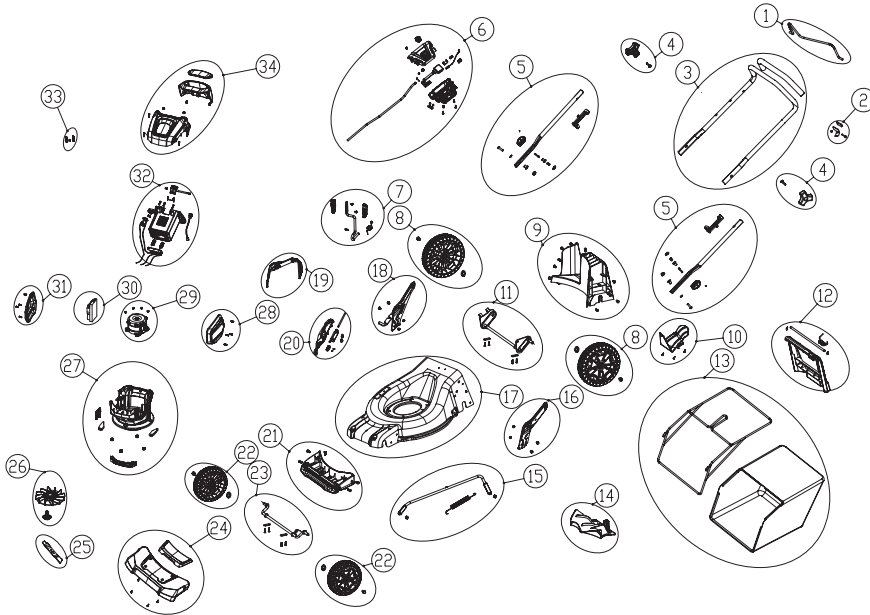
Lawn Mower 82 LMS46 2500486



POSITION	PNC	DESCRIPTION	QTY	UOM
7-2		Cross recess pan head self-tapping screw with washer	2	pcs
7-3		Height adjustment lever (curved)	1	pcs
7-4		Height adjustment handle left housing	1	pcs
7-5		Split pin	1	pcs
7-6		Height adjustment torsion spring	1	pcs
8	RA341271179E	10 inch wheel assembly	2	set
8-1		M8*16 hexagon flange face bolt	1	pcs
8-2		10 inch wheel assembly	1	pcs
8-3		80V washer	1	pcs
9	RA341051511B	Rear surrounding panel assembly	1	set
9-1		Hexagonal socket pan head self-tapping screw ST5.5*16-F	10	pcs
9-2		Rear surrounding panel	1	pcs
10	RA341091511	Casing connecting plate assembly	1	set
10-1		Casing connecting plate	1	pcs
10-2		Hexagonal socket self-tapping screw ST4.2*12-F	4	pcs
11	RA311011511A	Rear wheel axle assembly	1	set
11-1		19 inch rear wheel axle	1	pcs
11-2		Axle pressure plate	2	pcs
11-3		Hexagonal socket pan head self-tapping screw ST4.2*20-C	4	pcs
12	RA341021511B	Rear cover plate assembly	1	set
12-1		Rear cover rod	1	pcs
12-2		Rear cover torsion spring	1	pcs
12-3		Split washer 8	2	pcs
12-4		Rear cover plate	1	pcs
13	RA311062385	Grass collecting bag assembly	1	set
13-1		19 inch grass collecting bag bracket	1	pcs
13-2		19 inch grass collecting bag	1	pcs
14	RA341011511	Rear plug	1	set
14-1		Rear plug	1	pcs
15	RA333021511B	Height adjustment connecting rod assembly	1	set



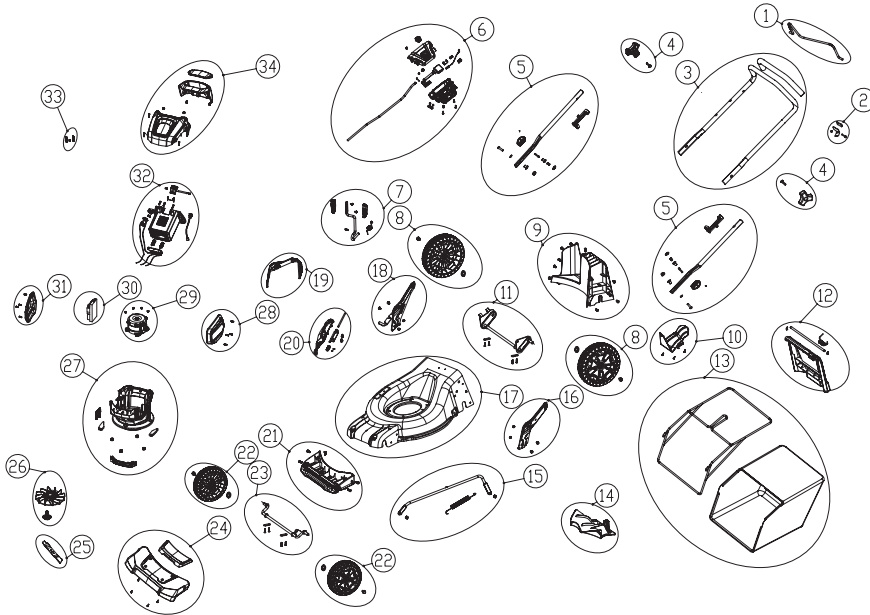
Lawn Mower 82 LMS46 2500486




POSITION	PNC	DESCRIPTION	QTY	UOM
15-1		Lock nut M6 white zinc-plated	2	pcs
15-2		Height adjustment pull spring	1	pcs
15-3		Height adjustment connecting rod	1	pcs
16	RA333021505E	Left height adjustment plate component	1	set
16-1		Hexagonal socket cup head bolt M10*20	2	pcs
16-2		Left height adjustment bracket	1	pcs
16-3		Lock nut M10	2	pcs
17	RA333011511H	19 inch casing	1	set
17-1		19 inch casing	1	pcs
18	RA311121511E	Right height adjustment plate component	1	set
18-1		Hexagonal socket cup head bolt M10*20	2	pcs
18-2		Right height adjustment bracket	1	pcs
18-3		Lock nut M10	2	pcs
19	RA341031511B	Side discharge chute	1	set
19-1		Side discharge chute	1	pcs
20	RA311041511	Side discharge cover assembly	1	set
20-1		Side discharge cover	1	pcs
20-2		Side cover torsion spring	1	pcs
20-3		Rubber bushing	2	pcs
20-4		Hexagon flange face bolt M6X8	2	pcs
20-5		Side discharge bracket, white zinc plated	1	pcs
20-6		Side discharge hinge rod, white zinc plated	1	pcs
21	RA311901567	Front surrounding panel component	1	set
21-1		Hexagonal socket pan head self-tapping screw ST5.5*16-F	5	pcs
21-2		Front surrounding panel	1	pcs
22	RA341281179AB	8 inch wheel assembly	2	set
22-1		M8*16 hexagon flange face bolt	1	pcs
22-2		8 inch wheel assembly	1	pcs
22-3		80V washer	1	pcs
23	RA311021511A	Front wheel axle assembly	1	set
23-1		19 inch front wheel axle	1	pcs
23-2		Axle pressure plate	2	pcs



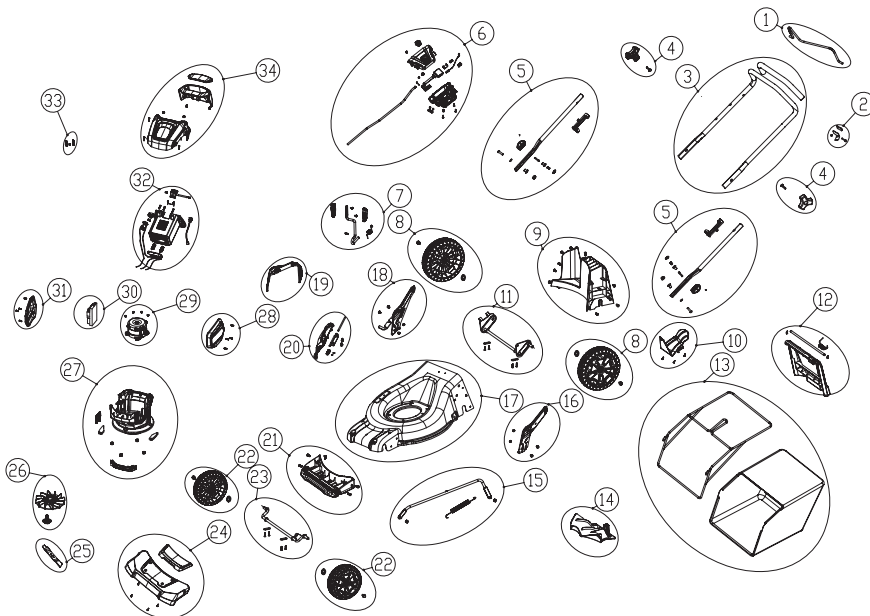
Lawn Mower 82 LMS46 2500486



POSITION	PNC	DESCRIPTION	QTY	UOM
23-3		Hexagonal socket pan head self-tapping screw ST4.2*20-C	4	pcs
24	RA341331179AJ	Bumper assembly	1	set
24-1		Bumper decorative cover	1	pcs
24-2		Bumper	1	pcs
24-3		Hexagonal socket self-tapping screw ST4.2*12-F	4	pcs
24-4		Hexagonal socket pan head self-tapping screw ST4.2*20-C	4	pcs
25	RA333022330	19 inch blade	1	set
25-1		19 inch 46cm blade	1	pcs
26	RA341191179E	Fan assembly	1	set
26-1		82v fan	1	pcs
26-2		Blade bolt - should be seperate part	1	pcs
27	RA341201511E	Motor fixed base assembly	1	set
27-1		Motor mount	1	pcs
27-2		Right wire cover	1	pcs
27-3		Left dust screen	1	pcs
27-4		Flange face self-locking nut	4	pcs
27-5		LED light cover	1	pcs
27-6		Right dust screen	1	pcs
28	RA341131511AB	Left side cover assembly	1	set
28-1		Hexagonal socket self-tapping screw ST4.2*12-F	4	pcs
28-2		Left side cover	1	pcs
29	RA361011567	Motor assembly	1	set
29-1		Self-locking nut M6 (black)	4	pcs
29-2		European 82V 19 inch push mower motor	1	pcs
30	RA362011567B	PCB board assembly	1	set
30-1		GW 82V power head main blade control panel	1	pcs
31	RA341121511AB	Right side cover assembly	1	set
31-1		Hexagonal socket self-tapping screw ST4.2*12-F	4	pcs
31-2		Right side cover	1	pcs



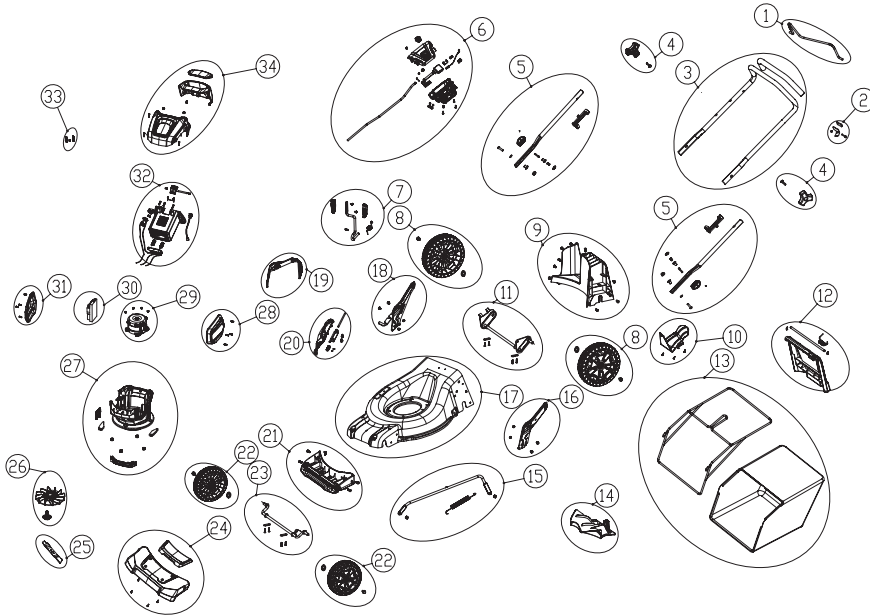
Lawn Mower 82 LMS46 2500486



POSITION	PNC	DESCRIPTION	QTY	UOM
32	RA311212386	Battery pack chamber assembly	1	set
32-1		Hexagonal socket pan head self-tapping screw ST4.2*20-C	4	pcs
32-2		82V battery chamber	1	pcs
32-3		Key holder	1	pcs
32-4		80V female insert piece	2	pcs
32-5		Key holder pressure sheet	1	pcs
32-6		Hexagonal socket self-tapping screw ST4.2*12-F	2	pcs
32-7		Battery pop up compression spring	2	pcs
32-8		Battery pack insert holder	1	pcs
32-9		Electrical lead (14AWG red)	58	cm
32-10		Electrical lead (14AWG black)	15	cm
32-11		Electrical lead (yellow)	15	cm
32-12		ECO switch	1	pcs
32-13		Battery pack button torsion spring	1	pcs
32-14		Lock button bushing	2	pcs
32-15		Battery pack button fixed shaft	1	pcs
32-16		Battery pack button	1	pcs
32-17		Heat shrink tubing $\phi 8$	5	cm
32-18		Nylon tie, white	2	pcs
32-19		2PIN plug	1	pcs
32-20		1PIN plug	1	pcs
32-21		Wire connector female terminal	3	pcs
32-22		Magnetic ring	2	pcs
33	RA311092385	Key assembly	1	set
33-1		Left key shell	1	pcs
33-2		80v key male insert piece	1	pcs
33-3		Right key shell	1	pcs
34	RA311222386	Battery flap assembly	1	set
34-1		Hexagonal socket pan head self-tapping screw ST4.2*20-C	4	pcs



Lawn Mower 82 LMS46 2500486



POSITION	PNC	DESCRIPTION	QTY	UOM
34-2		Cover	1	pcs
34-3		Strong magnet	2	pcs
34-4		Cross recess countersunk head self-tapping screw	2	pcs
34-5		Flap cover	1	pcs
34-6		Transparent window	1	pcs

