

SINCE 1839

BRINLY

SINCE 1839

BRINLY

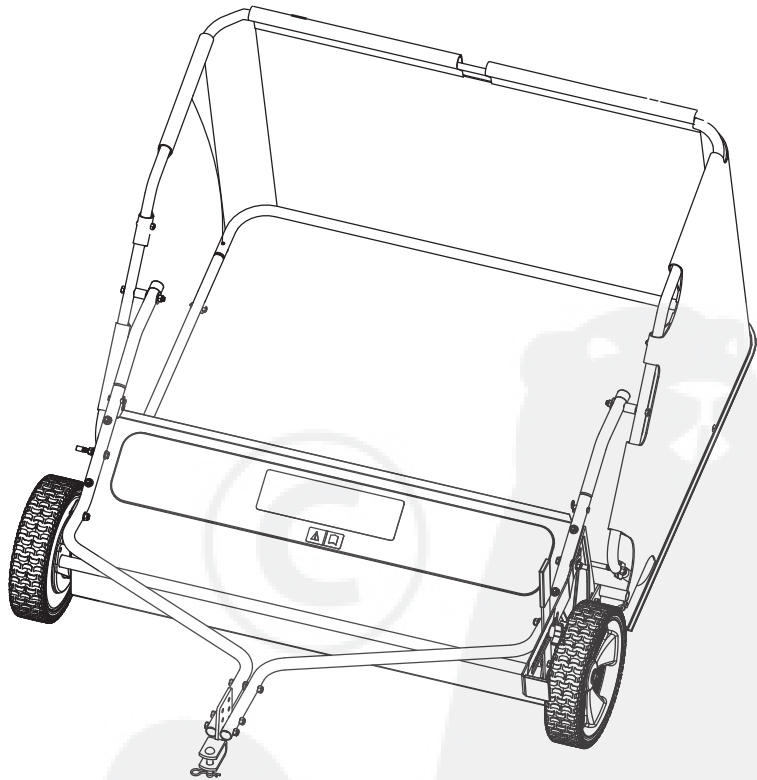
OWNER'S MANUAL

LAWN SWEEPER

MODEL:

STS-427LXH

- Assembly
- Installation
- Operation
- Repair Parts



Visit us on the web!
www.brinly.com

Important: This manual contains information for the safety of persons and property. Read it carefully before assembly and operation of the equipment!

1009725-B

COMPONENT VIEW AND REFERENCE LIST

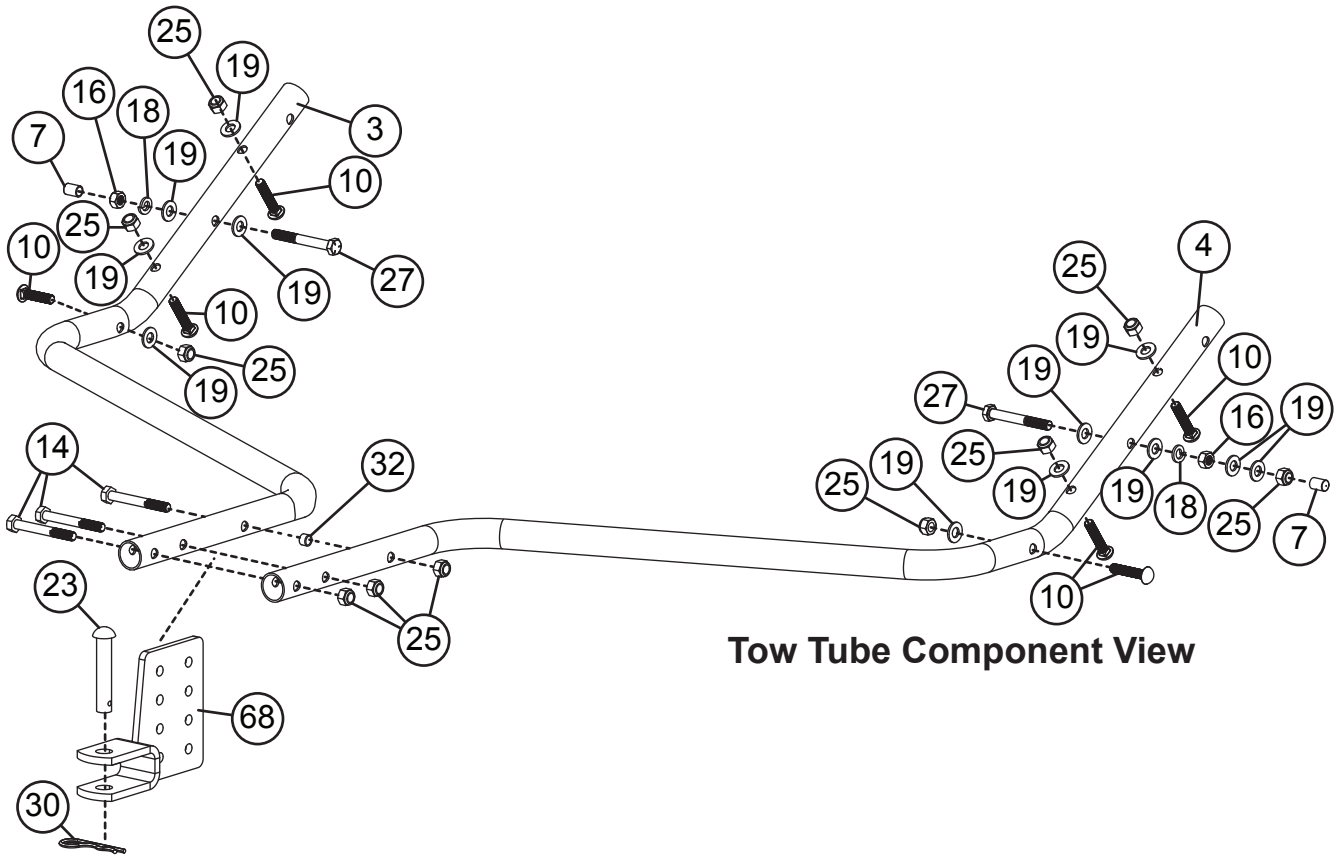
REF	PART NO.	DESCRIPTION	QTY	REF	PART NO.	DESCRIPTION	QTY
1	1008953-10	Lock Arm	1	46	1008987	Wheel	2
2	1008958-10	Height Adjustment Handle	1	47	1008992-10	Hamper Stop	1
3	1008960-10	Tow Tube, Right	1	48	11M0808P	1/4" x 1/2" Carriage Bolt	6
4	1008961-10	Tow Tube, Left	1	49	50M0624P	3/16" x 1-1/2" Cotter Pin	4
5	1008962-10	Hamper Mount	2	50	B-4768	5/8" Machine Bushing	4
6	1008965	5/16" x 1" Spacer	2	51	B-5924	Brinly Decal	1
7	1009047	Vinyl Bolt Cap	2	52	B-7063	Caution Label	1
8	1009058	Vinyl Grip	1	53	F-577	5/8" E Ring	6
9	11M1020P	5/16" x 1-1/4" Carriage Bolt	1	54	L-1744	Label, Serial No	1
10	11M1024P	5/16" x 1-1/2" Carriage Bolt	6	55	R-2205	Brush Section	6
				56	R-2259-01	Brush Axle	1
				57	R-2261	1/4" x 3/4" Dowel Pin	2
13	2M1012P	5/16" x 3/4" Hex Bolt	5	58	R-2262	5/8" Large Flat Washer	2
14	2M1044P	5/16" x 2-3/4" Hex Bolt	3	59	R-2263	5/8" Flat Washer	2
15	2M1056P	5/16" x 3-1/2" Hex Bolt	2	60	R-2281	Brush Holder	4
16	30M1000P	5/16" Hex Nut	2	61	R-2289SER	Bearing Retainer	2
17	30M1200P	3/8" Hex Nut	2	62	R-2320	5/8" External Retaining Ring	2
18	40M1000P	5/16" Lock Washer	2	63	R-2321	Screw, Tapping, #12 X 3/8	4
19	45M1111P	5/16" Washer	14	64	R-2485LH	LH Drive Pinion	1
20	B-1673P	1/4" Lock Nut	6	65	R-2485RH	RH Drive Pinion (Not Shown)	1
21	B-1674P	5/16" Lock Nut	1	66	R-2194-10	Rear Hamper Tube	2
22	B-1675P	3/8" Lock Nut	2	67	R-2195	Hamper Stop Rod	1
23	B-3861	1/2" X 2-1/2" Hitch Pin	1	68	R-2251-10	Hitch Clevis	1
24	B-4107	1" Vinyl Cap	2	69	R-2443-10	Lower Side Tube	2
25	B-4786	5/16" Nylon Lock Nut	16	70	R-2307	Spring Rod	2
26	1009205	Grip	1				
27	B-4868	5/16" x 2-1/2" Hex Bolt	2				
28	B-5650	5/16" Star Lock Washer	1				
29	B-983	0.08" Hairpin Cotter	2				
30	D-146P	1/8" Hairpin Cotter	1				
31	F-782	5/16" Knob	1				
32	R-1141-01	Frame Spacer	1				
33	R-2303	5/16" X 1-3/8" Clevis Pin	2				
34	R-618	Large Washer	3				
35	1008997SER	Pull Handle	1				
36	1009049	Adhesive Hook and Loop	1				
37	1009639	Rope, Pull, Hamper	1				
38	R-2300-10	Upper Side Tube	2				
40	R-2426	Hamper	1				
41	1009046	Adjustment Label	1				
42	1008955	Dust Cover	2				
43	1008957-10	Lower Pivot	1				
44	1008959-01	Wheel Axle	2				
45	1008986-10SER	Brush Housing	1				

Tools Required for Assembly:

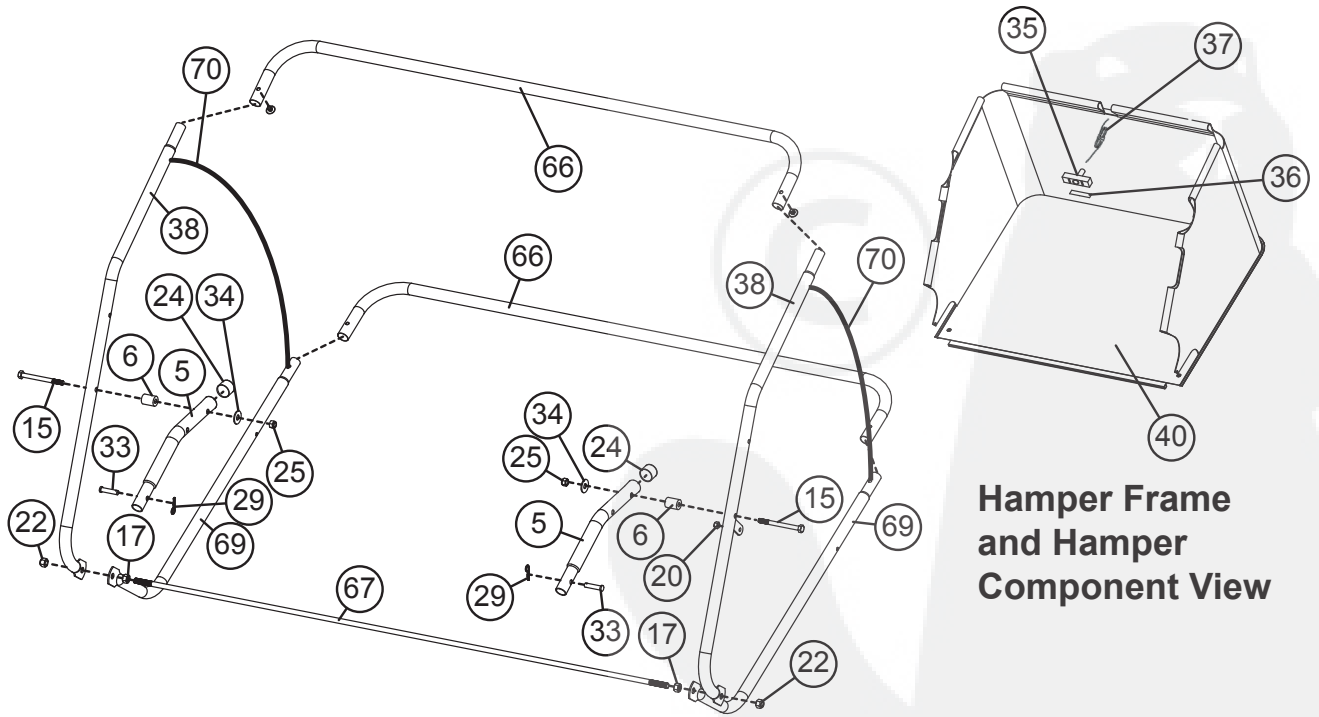
- 1/2" Wrench (2)
- 9/16" Wrench (2)
- 7/16" Wrench (1)
- Flat Tip Screw Driver (1)
- Pliers
- Gloves

4. 1009725-B

COMPONENT VIEW AND REFERENCE LIST



Tow Tube Component View



Hamper Frame and Hamper Component View

